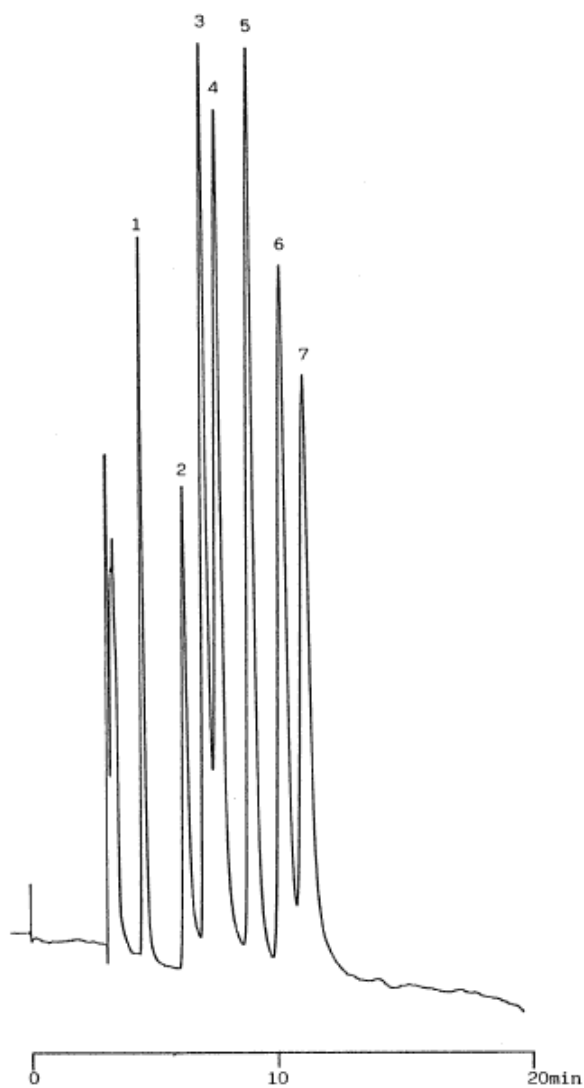


# InertSearch™ for LC

Inertsil® Applications

## 7. Sugars

Data No. LA062-0000



Column : Unisil Q NH2  
5µm  
250 × 4.6 mm I.D.

Column Cat. No. : 5020-03402

Eluent : CH<sub>3</sub>CN/H<sub>2</sub>O = 65/35

Flow rate : 1.0 mL/min.

Col. Temp. : 40°C

Detection : RI

Injection Vol. :

Sample : Sugars

Solutes : 1. Ethyleneglycol  
2. Xylose  
3. D (-) Fructose  
4. D (+) Glucose  
5. Sucrose  
6. D (+) Maltose monohydrate  
7. Lactose monohydrate