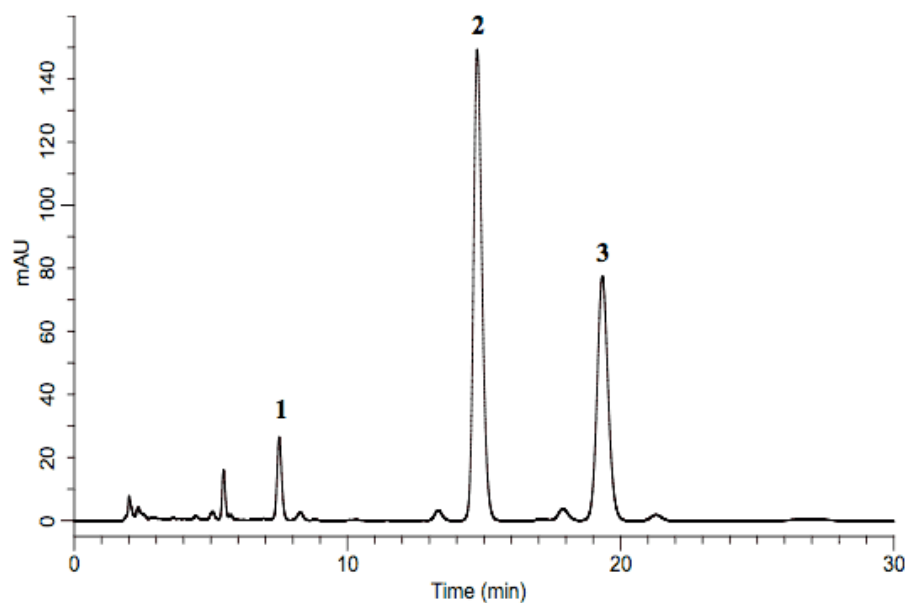


## Analysis of Scopolia Extract (Under the Condition of Japanese Pharmacopoeia)

Data No. LA573-0698



\*Resolution: Peak 1-2; 16.67, Peak 2-3; 7.11

System	: GL-7400 system	Solutes: 1. Scopolamine
Column	: Inertsil ODS-SP (5 $\mu$ m, 150 $\times$ 4.6 mm I.D.)	2. Hyoscyamine
Column Cat. No. :		3. Brucine (Internal Standard)
Eluent	: A) CH <sub>3</sub> CN B) 50 mM KH <sub>2</sub> PO <sub>4</sub> , 1 % (C <sub>2</sub> H <sub>5</sub> ) <sub>3</sub> N ,v/v (pH 3.5, H <sub>3</sub> PO <sub>4</sub> ) A/B = 10/90	
Flow rate	: 0.9 mL/min	
Col. Temp.	: 30 °C	
Detection	: UV 210 nm (GL-7450 UV detector)	
Injection Vol.	: 10 $\mu$ L	
Sample	: Scopolia Extract	