

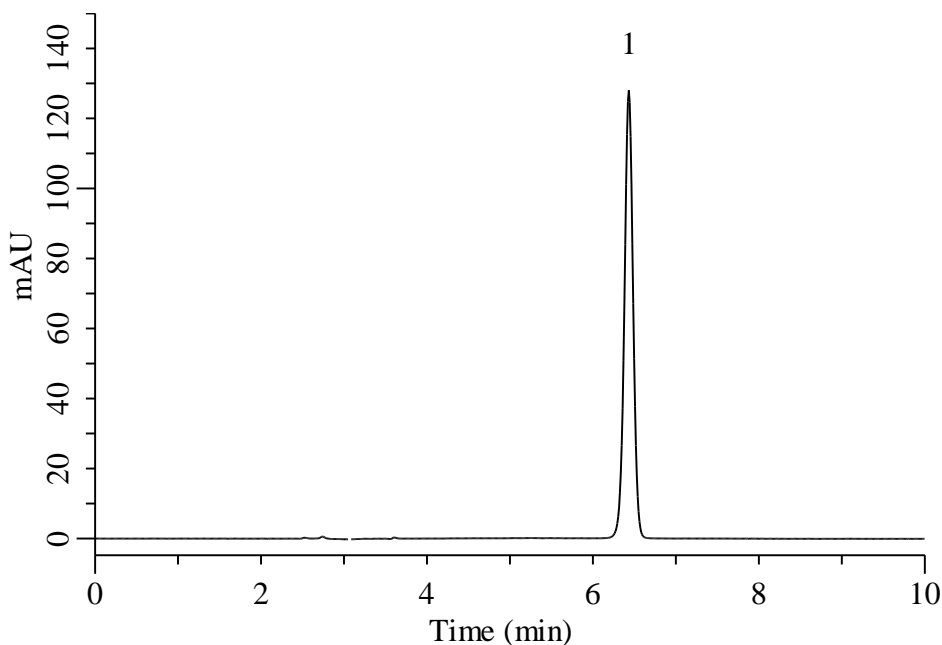
InertSearch™ for LC

Inertsil® Applications

Analysis of Oxaliplatin

(Under the Condition of the draft for the Japanese Pharmacopoeia 18th supplement II)

Data No. LB755-0919



Conditions

System : Primaide HPLC system (HITACHI)
Column : InertSustainSwift C18 (GL Sciences Inc.)
(5 μ m, 250 x 4.6 mm I.D.)
Column Cat. No. : 5020-88027
Eluent : A) CH₃CN
B) H₂O (pH 3.0, H₃PO₄)
A/B = 1/99, v/v
Flow Rate : 1.2 mL/min
Col. Temp. : 40 °C
Detection : UV 210 nm
Injection Vol. : 20 μ L
Sample : Standard

Analyte:

1. Oxaliplatin 100 mg/L

Theoretical plates : 18,746 (\geq 3,000)
Symmetry factor : 0.98 (\leq 2.0)
RSD of the
peak area (%) (n=6) : 0.06 (\leq 1.0)