

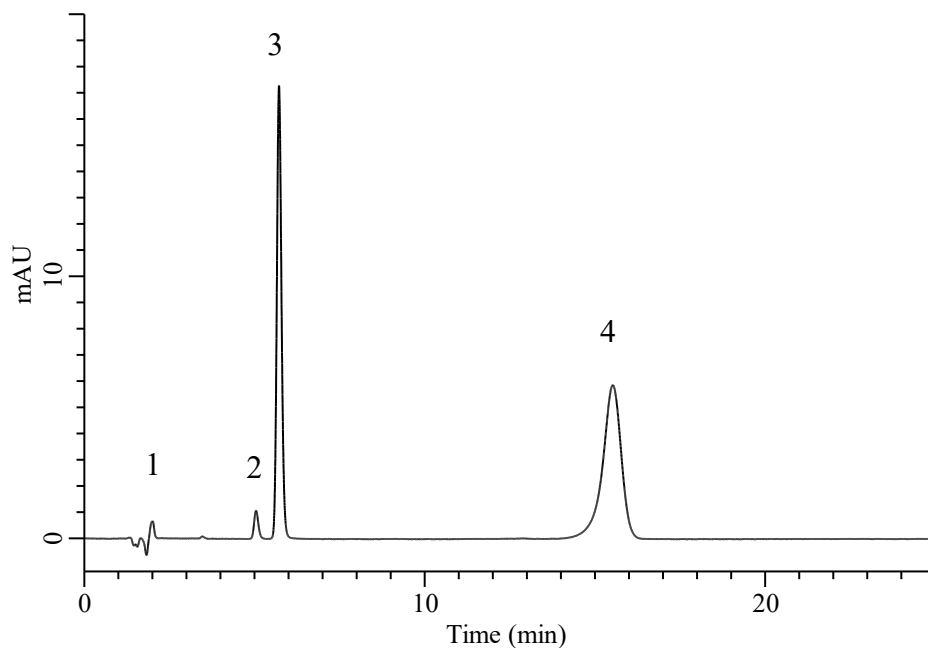
# InertSearch™ for LC

Inertsil® Applications

## Analysis of Natamycin (Analytical Method B)

(Under the Condition of food additive analysis method in food)

Data No. LB858-7111



### Conditions

**System** : Primaide HPLC system (HITACHI)

**Column** : InertSustain C18 (GL Sciences Inc.)  
(5  $\mu$  m, 150 x 4.6 mm I.D.)

**Column Cat. No.** : 5020-07345

**Eluent** : A) H<sub>2</sub>O  
B) CH<sub>3</sub>OH  
C) CH<sub>3</sub>CN  
D) CH<sub>3</sub>COOH  
A/B/C/D = 60/20/15/5, v/v/v/v

**Flow Rate** : 1.0 mL/min

**Col. Temp.** : 40 °C

**Detection** : UV 304 nm

**Injection Vol.** : 20  $\mu$  L

**Sample** : Standard

### Analyte:

1. Saccharin	5 $\mu$ g/mL
2. Sorbic acid	5 $\mu$ g/mL
3. Dehydroacetic acid	5 $\mu$ g/mL
4. Natamycin	5 $\mu$ g/mL