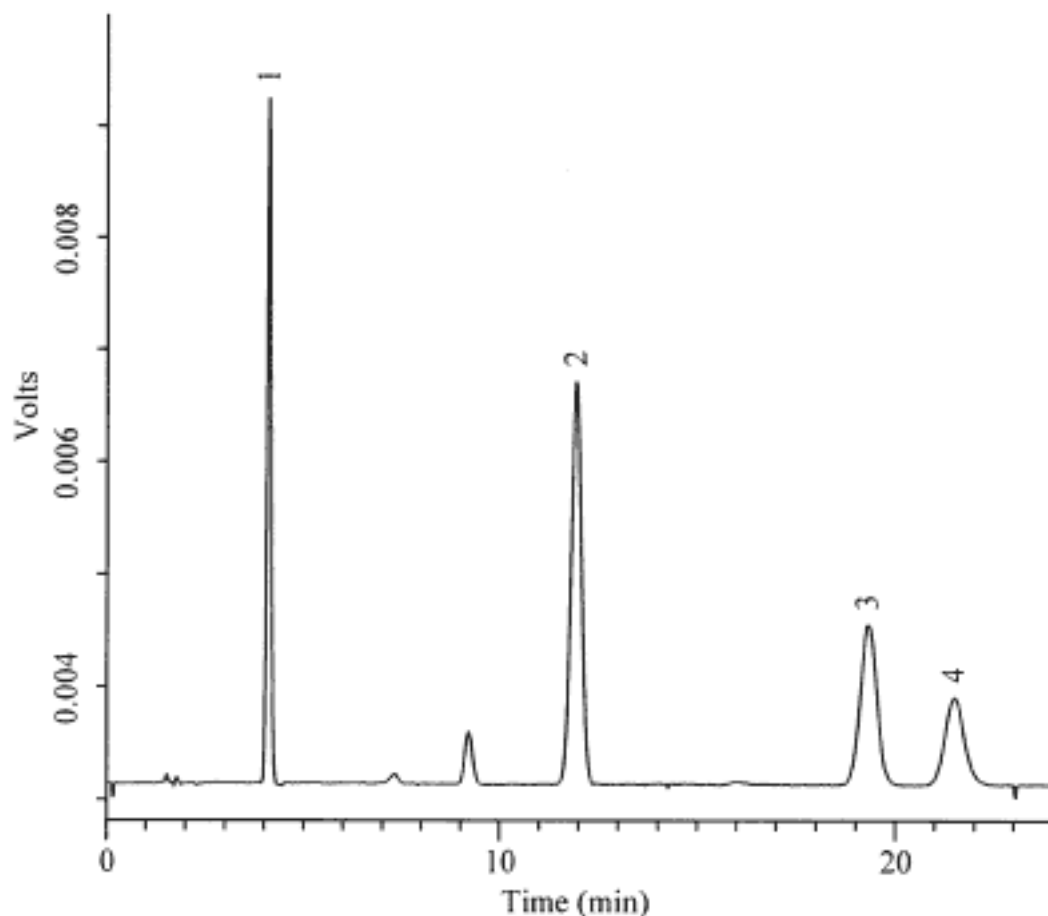


25. Analysis of Food additives

Data No. LA080-0000



Column : Inertsil ODS-3V
150 × 4.6 mm I.D.

Column Cat. No. :

Eluent : CH₃OH/50 mM Phosphate buffer (pH 5.5) = 60/40

Flow rate : 1.0 mL/min.

Col. Temp. : 40°C

Detection : UV 280 nm

Injection Vol. : 1 µL

Sample : Food Additives

Solutes : 1. tert-Butylhydroquinone (TBHQ, 100 µg/mL)
2. 3-tert-Butyl-4-hydroxyanisole (BHA, 100 µg/mL)
3. Ethoxyquine (100 µg/mL)
4. 2, 6-di-tert-Butyl-4-hydroxymethylphenol (TBH, 100 µg/mL)