

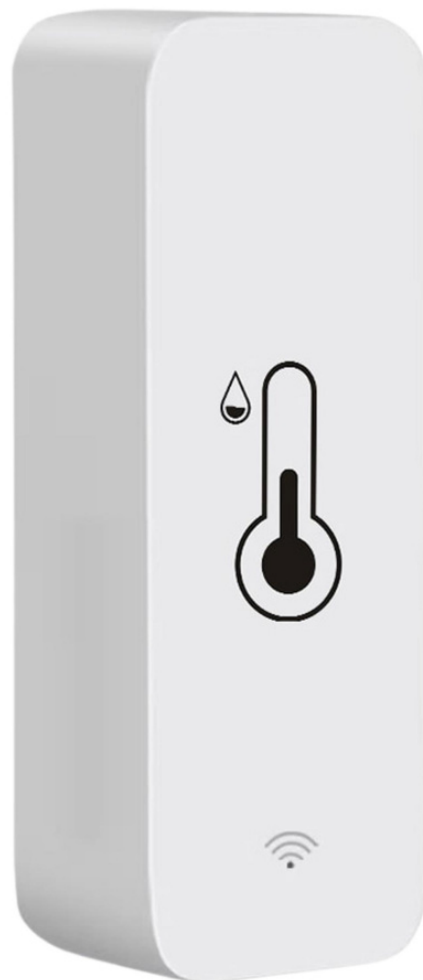
GET SMART

# THE CONNECTED SHOP



**SMART TEMPERATURE MONITOR  
USER MANUAL**

Welcome to the Smart Temperature Monitor User Manual. Your easy, step-by-step guide to set up and connect your Smart Temperature Monitor. The device is designed to be user-friendly and convenient.



# SUMMARY

---

## I. Device Set Up



1. Set-up Guide
  - a) Set-up Video

## II. Device Functions



2. Initial State of your Smart Temperature Monitor
  - a) Activate Device

## III. Mobile App Connection



3. Registering on the Mobile App
  - a) Downloading the Mobile App
  - b) Adding Devices

## PACKAGING DETAILS

---

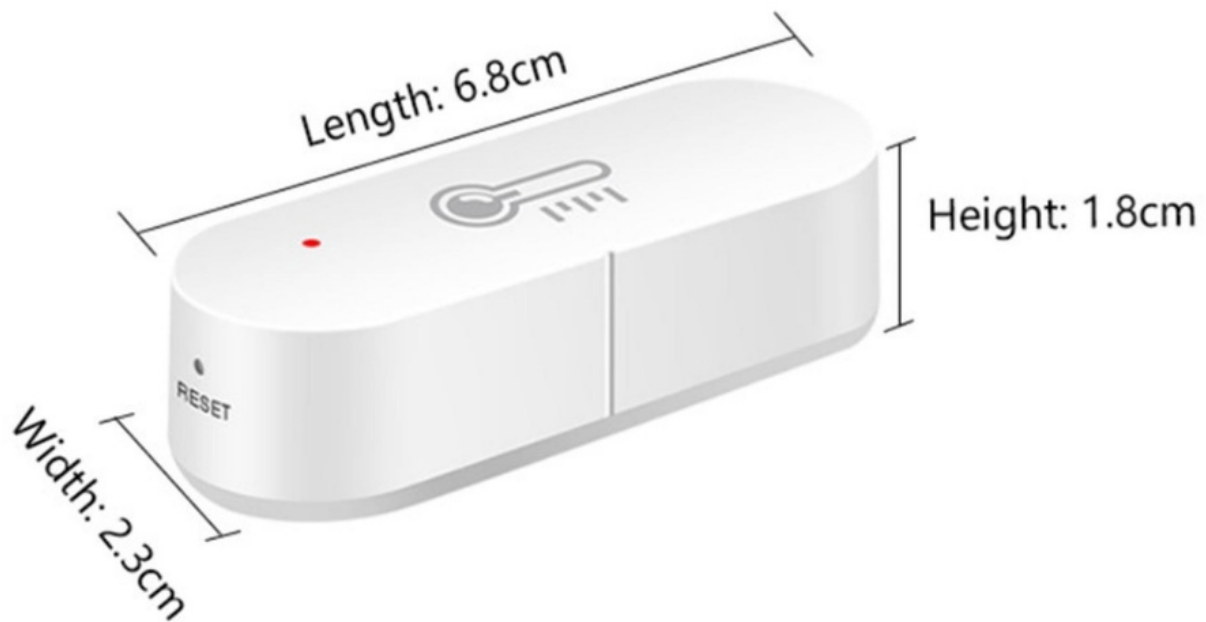


1 Smart Temperature Monitor

2 Double-sided Tape

## STEP-BY-STEP SET-UP GUIDE

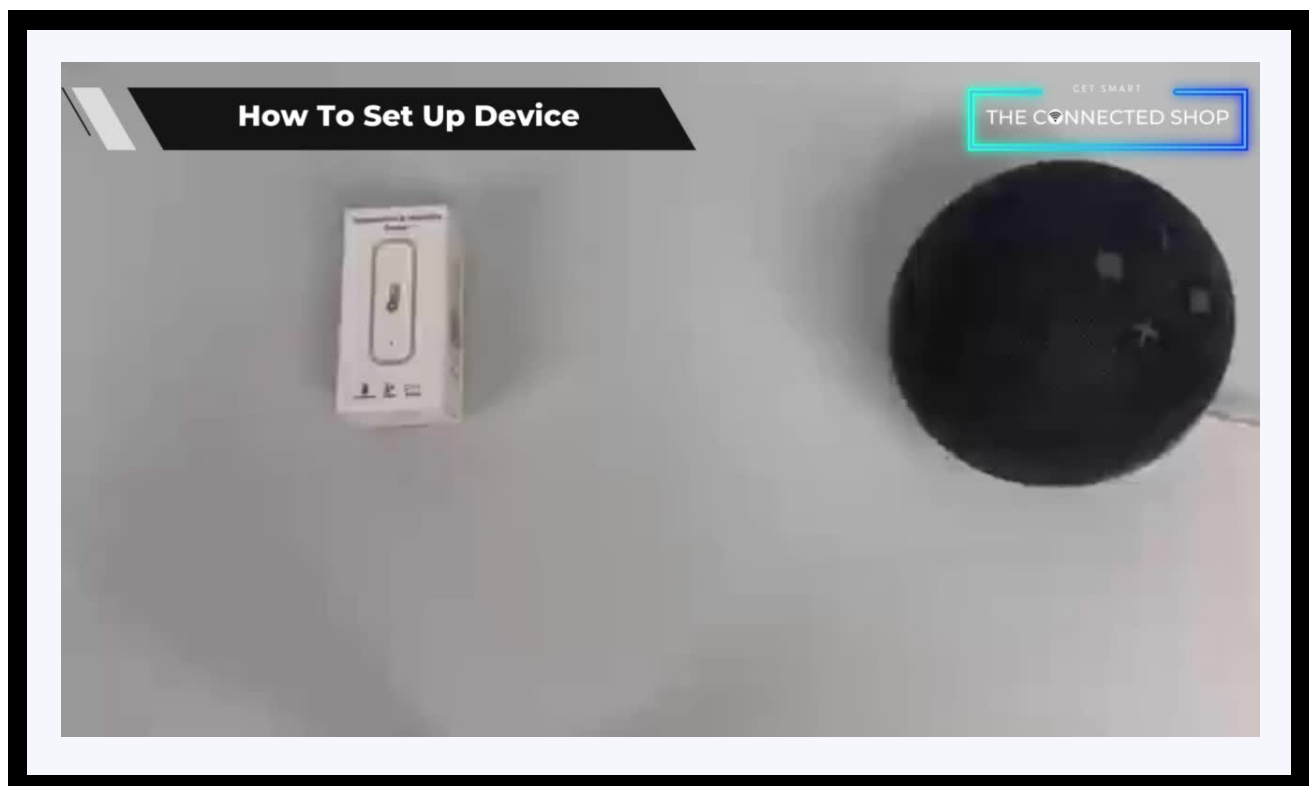
---



## 1. SET UP



- a. Remove all items from its original box
- b. Open the battery compartment found at the back of the device and insert two (2) AA batteries
- c. Insert the pin to reset the device for at least 5-10 seconds or up until the light indicator flashes
- d. Proceed to the following steps and videos on how to add the device to the mobile app
- e. Make sure to test the device after setting it up

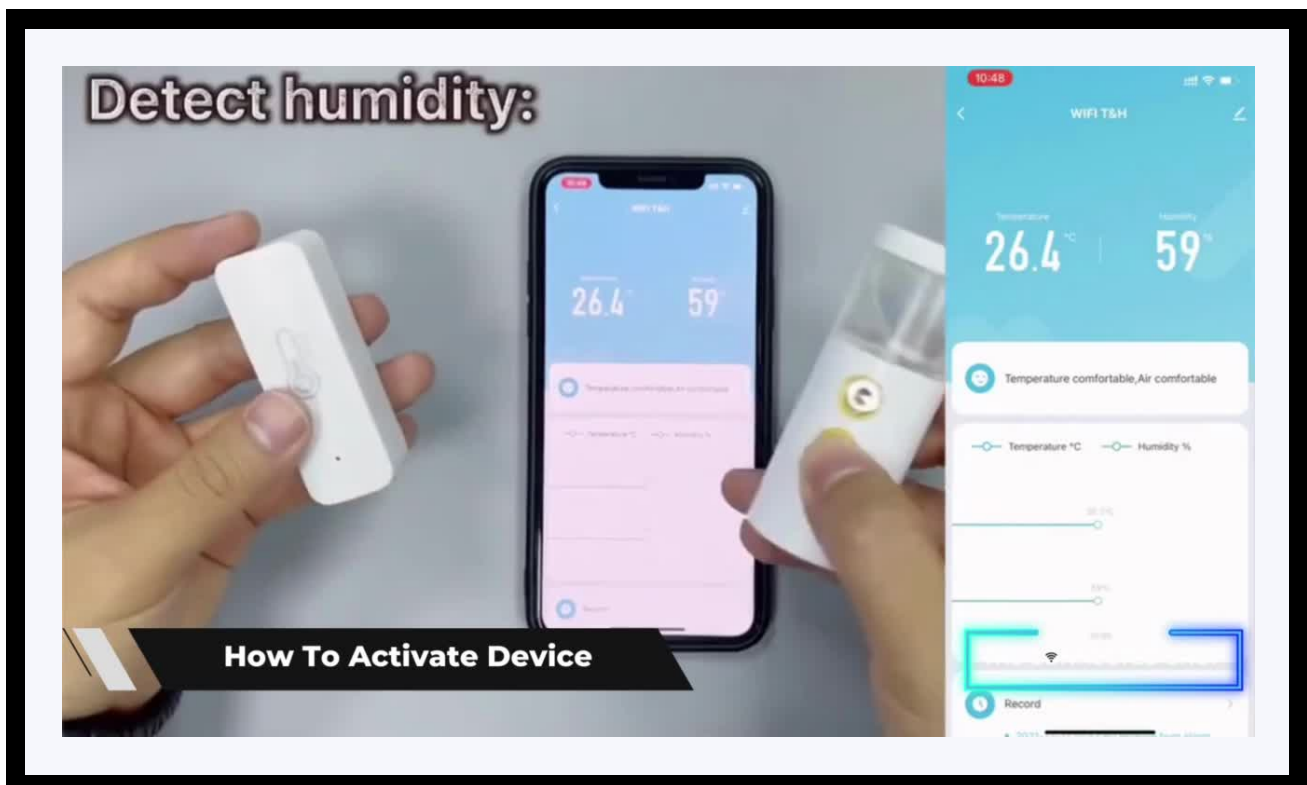


## 2. INITIAL STATE OF YOUR DEVICE



### a) Activate Device

- To configure the settings of the devices, open the mobile app and select the intended device
- Go to 'Settings' and set your preferred level/degree of temperature (or humidity)
- Save and confirm
- Once the device detects the level of humidity or temperature goes beyond your preset value, its alarm will go off and will notify you via the mobile app



### 3. MOBILE APP CONNECTION



#### a) Downloading the App

Download the application on the Google Play Store or Apple AppStore by searching “Tuya Smart” or by scanning the QR code below



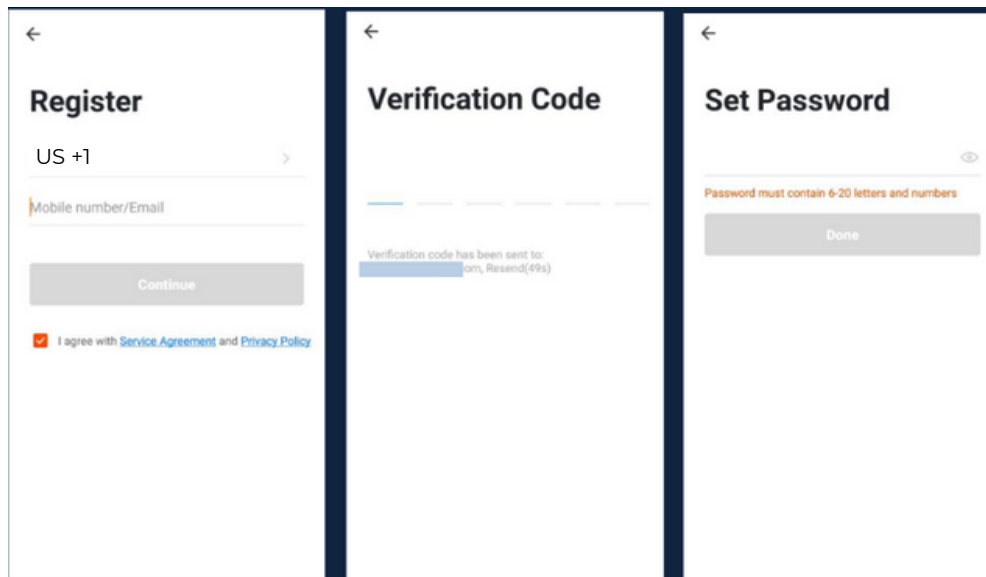
#### b) Logging in and Registering

##### After Downloading the App

- Select the country from which you will be using the device, usually the app will prompt it automatically
- You will be redirected to register via email where a verification code will be sent and proceed to enter it on the app in the allotted time limit
- Once the verification code has been entered into the app, you will be asked to set your password
- You will then have full access to the Tuya Smart Platform



### 3. MOBILE APP CONNECTION

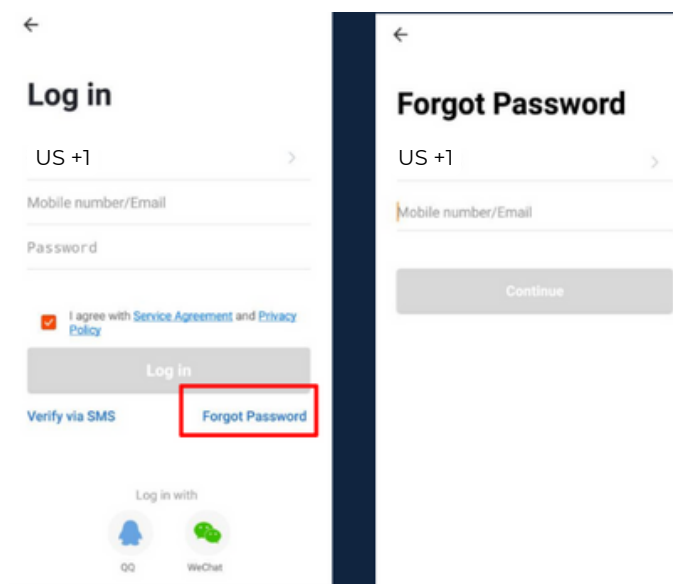


Should you be an existing user to the Tuya Smart Platform, log in using your email and password from the login page.

#### c) Resetting your Password

In case you have forgotten your password and need to reset it, please follow the steps below:

- On the Login Page, when prompted for your email & password, click “Forgot Password” button located below the “Login” button
- Select the country from which you will be using the device, usually the app will prompt it automatically



### 3. MOBILE APP CONNECTION



#### Verification Code

Verification code has been sent to: 86-15219500857,  
Resend(57s)

#### Set Password

Password must contain 6-20 letters and numbers

Done

- You will be prompted to enter the email where a verification code will be sent and proceed to enter it on the app in the allotted time limit
- Once the verification code has been entered into the app, you will be asked to set your new password
- You will then have full access to the Tuya Smart Platform

In the case that you would like to change your password from the app, please follow the steps below:

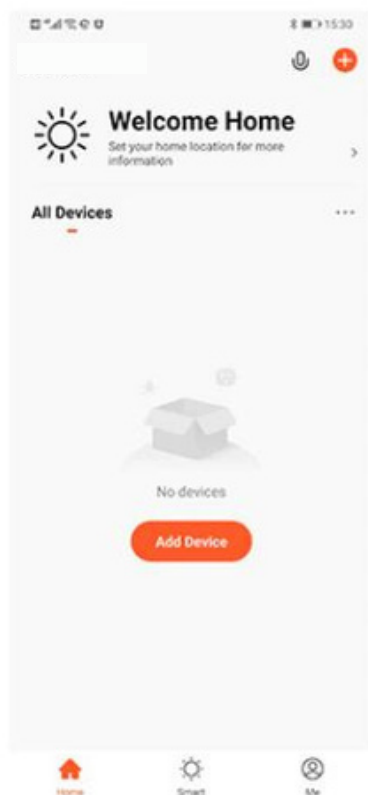
- Tap the 'Me' tab on the bottom right hand corner of your screen
- Click 'Change Login Password'
- You will be taken to the 'Account Verification' page and then tap 'Get Verification Code' button
- This will send a verification to your registered email
- Enter the code in the app
- Proceed to enter the new password

### 3. MOBILE APP CONNECTION

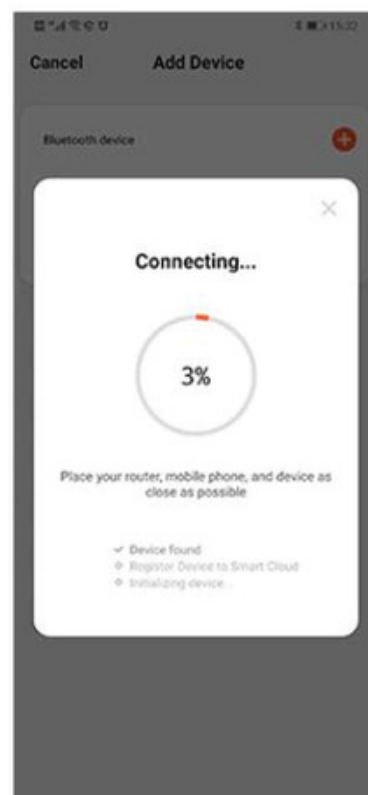


#### d) Adding Devices

To add devices on the app, please follow the instructions below. Your devices and phone must be connected to the same Wi-Fi network in order for this to work.



- To add a device, click the 'Add Device' or tap the 'Plus' button on the top-right corner of your screen and select 'Add Device'
- Enable Bluetooth and phone location to proceed
- The app will automatically detect a nearby device. Select it when it pops up on the screen



- Wait for the app to finish searching for the device
- Finish adding your device. Once this has been done successfully, you can go on to change the name of your device and control its functions

## Congratulations!

You have successfully set up your very own Smart Temperature Monitor.

Thank you for being a valued customer of The Connected Shop.

[www.theconnectedshop.com](http://www.theconnectedshop.com)





# THE CONNECTED SHOP