

Winchelsea Star

Price \$1



Your Weekly Community Newspaper

Since 1977

Vol 46 Ed 44

Tuesday 14 November 2023

winchelseastar.org.au



Ahoy!
Pirates at
Winchelsea
Playgroup

We're building big and there will be transport disruptions



As part of Victoria's Big Build, we're upgrading the Geelong and Warrnambool lines and removing congested level crossings at Fyans Street and the Surf Coast Highway.

Train disruptions: Coaches replace trains in both directions

Geelong Line

8 to 19 Nov

Geelong to Waurn Ponds

🕒 At night, 24 Nov

Southern Cross to Waurn Ponds

Warrnambool Line

8 to 19 Nov

Geelong to Warrnambool

Road disruptions

Surf Coast Highway, Grovedale

🕒 From 9.30 to 6.30 each night,
27 Nov to 1 Dec
4 to 8 Dec
11 to 15 Dec

Road closed at level crossing

Check before you travel at bigbuild.vic.gov.au



Ahoy! Pirates!

by Mel Oberin, Winchelsea Playgroup

The 2nd November saw Pirates at Winchelsea Playgroup with a real-life Pirate Parrot, called Nugget!

Our little Pirates experienced the life of a pirate with activities such as 'Walk the Plank!' with sharks, jelly-fish, octopus and other sea creatures lurking in the deep blue waiting for a dirty pirate to come plunging in. There was also a Pirate ship to 'batten down the hatches' and sail on the Seven Seas, made from our indoor playground equipment decorated with pirate flags, treasure maps and pictures of fellow shipmates - our big blue safety mat for our slide even had a crocodile watching and waiting to nibble on any pirate toes or fingers; just like in Captain Hook!

We had a big sandy treasure pit for our pirates to dig out treasure - many a fine booty was found! As well as pirate-themed colouring sheets, a giant floor puzzle showing a pirate scene, and had fun decorating a mini pirate hat by pasting colourful bits and pieces of paper, materials, fluffy balls and lots more to make each one a unique piece of art (every pirate deserves a fine hat!).

Our pirates also got to see what a pirate ship wreck could look like with our mini sensory pretend play set-up, showing a wonderfully made Sunken Pirate Ship large fish tank ornament placed on a real sand bank and water to lap at the pebble shore. Children played helping a toy Captain and his toy crew to get off the ship and safely back to shore.

We also had a very special surprise for the pirates - a real-life, hand-reared Princess Parrot called Nugget that was brought along by one of our mum's (Chrissy). Nugget was a cheeky parrot who enjoyed entertaining the children with bobbing his head when dancing, throwing his toys off his tray onto the floor, tapping his beak on the table in time with our tapping



fingers and even trying to trick us by barking like a dog! Nugget enjoyed hopping on to our Pirate's open hands and then walking up their arms to perch on their shoulders to look around and squawk and chatter into their ears. Wonder what secrets Nugget shared with them?!

Come join us for more playgroup fun at our next session on Thursday 16th November - we'll be travelling back in time to play amongst DINOSAURS! Session time is 10am-12pm, \$5 per family, held at the St Thomas Anglican Church Hall (where Mainly Music is held). Bring along a piece of fruit to share.

Check out our Facebook page (Winchelsea Playgroup 2019) for more details. Please don't forget to answer our Join Request questions for our page.



YOU CAN'T CONTROL FIRE, BUT YOU CAN PREPARE FOR IT.

The best way to keep you and your loved ones safe this fire season, is to make sure you have a fire plan.

Go to fireplanner.vic.gov.au to create your personalised fire plan now.

HOW WELL DO YOU KNOW FIRE?

Authorised by the Victorian Government, 1 Treasury Place, Melbourne



HF RICHARDSON

PROPERTY

Servicing all your real estate needs

Ken McDonald **0418 524 150**



Residential | Rural Lifestyle | Agricultural Farms



Charles Stewart & Company are leading livestock and real estate service providers covering Victoria's south west

| LIVESTOCK | |
|-----------------|-------------|
| Jamie McConachy | 0418 522879 |
| Peter McConachy | 0408 522878 |
| Matt Nelson | 0428 315400 |
| Gerard Bohan | 0400 005541 |
| Lachie Barclay | 0438 346291 |
| John Thornton | 0408 526367 |
| Dougal McIntyre | 0439 575612 |
| Ross Spitty | 0419 539717 |

| REAL ESTATE | |
|------------------|-------------|
| Michael Stewart | 0418 520467 |
| Daryl Osborne | 0419 388341 |
| Anthony McDonald | 0418 593597 |
| Gerard Bohan | 0400 005541 |
| Stephen Lugg | 0417 556098 |
| Josh Lamanna | 0417 586032 |



Office
56 Bromfield Street, Colac
www.charlesstewart.com.au

Green Lead Electrical
Connecting you to a greener future
REC 29631

0467 097 101



Servicing Geelong & the Surf Coast

Specialising in all residential electrical work including:

- Switch board & lighting upgrades
- Outdoor lighting
- Electrical safety checks
- Energy efficient LED lighting
- Ceiling sweep fans & ventilation
- Energy saving advice

Phone Martin Wilkinson:

0467 097 101

greenlead@outlook.com

1132268-CC18-14



Libby is headed Stateside!

Angus Australia is pleased to announce that the 2023 Kansas State University Scholarship has been awarded to Victorian Libby Falkiner. Supported by the Angus Foundation, the Kansas State University Scholarship is designed to allow a young beef cattle enthusiast the chance to study at one of the best agricultural universities in the USA.

Libby will become the seventh recipient of the scholarship, and the first since 2019. As part of her scholarship experience, Libby will spend a semester abroad attending Kansas State (K State) and in addition to experiencing a tailored on-campus study program and quintessential college events, will have the opportunity to experience parts of the US beef supply chain from leading seedstock operations, cow calf operations, through to feedlots and the end supply chain.

With beef cattle the key focus at K State, Libby will experience the university's seedstock and commercial herd, feedlot, feed mill, brilliant teaching facilities and staff, and will assist in K States seedstock bull sale, working alongside other students in all aspects of the sale.

Angus Australia Extension Manager Jake Phillips looks forward to having Libby represent Angus Australia internationally, following her selection from a number of standout applicants.

"We received great support for this year's scholarship, following its absence from our program for a number of years. Through this application process, we are very encouraged for the future of the beef industry to have such high caliber people wanting to continue their personal and professional development," said Jake. "We are incredibly proud to award this scholarship to Libby and pleased to have her representing Angus Australia at K State. Libby has displayed a keen interest in expanding her knowledge and

learning within the beef industry and investigating this on an international level.

"I look forward to keeping up with Libby once she commences her time abroad and seeing what she takes from her time experiencing all of what K State and United States beef industry more broadly has to offer. We thank the staff at Kansas State University led by Dr Dan Moser, long-time friend and partner of Angus Australia, for assisting in the making this opportunity available."

As for recipient Libby, she is incredibly excited to head off to K State in the New Year. "The scholarship has been on my radar for many years, and I was incredibly excited to hear about its post pandemic revival!" she said.

"Since opening its doors in 1863, Kansas State University has cemented itself as one of America's finest agricultural schools and I'm keen to explore the methodology that leads to the development of such motivated, curious and balanced ag enthusiasts. It was also super exciting to chat with Jake Phillips and Dan Moser about the potential ways as a successful recipient I can form stronger connections between the Australian and American Angus Societies through research and networking."

She continued, "It's not often as a student that you have the capacity to develop such a tailored academic program, the significance of these unique circumstances is not lost on me! I am looking forward to wholeheartedly embracing life in Manhattan and aspire to capitalize on opportunities both in and out of the classroom. The contacts this scholarship provides opens so many doors. To think I will be able to visit studs and see some sires in the flesh that I've previously chatted with my Dad about over sale catalogues and EBV data is a super exciting prospect."

To keep up to date with Libby's K State journey, tune into the Angus Youth social media pages in 2024!

Following the completion of her scholarship experience, a report of Libby's time abroad will be shared on the Angus Australia website.

For further information please contact Angus Australia Extension Manager Jake Phillips at jake.phillips@angusaustralia.com.au.

About Libby:

Libby Falkiner grew up in South-western Victoria on a mixed farm featuring an Angus Seedstock operation. Her upbringing provided a brilliant introduction to the many aspects of cattle breeding and farm life and has ultimately inspired her to pursue a career in Veterinary Medicine with a key focus on large animals.

Now in her fourth year of Vet at CSU in Wagga, Libby has become increasingly aware of the need to build upon the experience she gained through her rural upbringing and expand her skills around the broader aspects of beef production. She aspires to one day to work alongside farmers in a veterinary role that delivers a more complete service to the rural community she enters.

Libby hopes through her experiences in the States that she is able to develop a stronger understanding of the global food supply chain and how best use her experiences and tertiary education to serve our resilient rural communities back home on Aussie soil.



R.A.K. DAVIS & SONS

CARTAGE CONTRACTORS

WINCHELSEA

SUPPLIER OF ALL QUARRY MATERIALS, TRUCK HIRE

CARTAGE OF GRAIN, LIME, GYPSUM & SUPER

LANDSCAPE & GARDEN SUPPLIES

56 WILLIS ST, WINCHELSEA

Ph – 5267 2094

Ryan – 0438 672 281

Email: rakdavis@bigpond.com

NATURAL GAS CONNECTIONS

M. & L DRAYTON
PLUMBING SERVICES

YOUR LOCAL LICENSED

- PLUMBERS (24356)
- GAS FITTERS
- GAS CONVERTERS
- CARBON MONOXIDE TESTING

MARK 0428 520 142

Commercial | Industrial | Domestic

HAMILTONS

Truck & Bobcat Hire
Give Aaron a Call
0438 438 623



Made for
more
purpose

At Victoria Police, you will enjoy a purposeful career making a real difference in your community. With more benefits including a generous starting salary, 9 weeks paid leave, and access to ongoing training and support. Start your career with Victoria Police today.

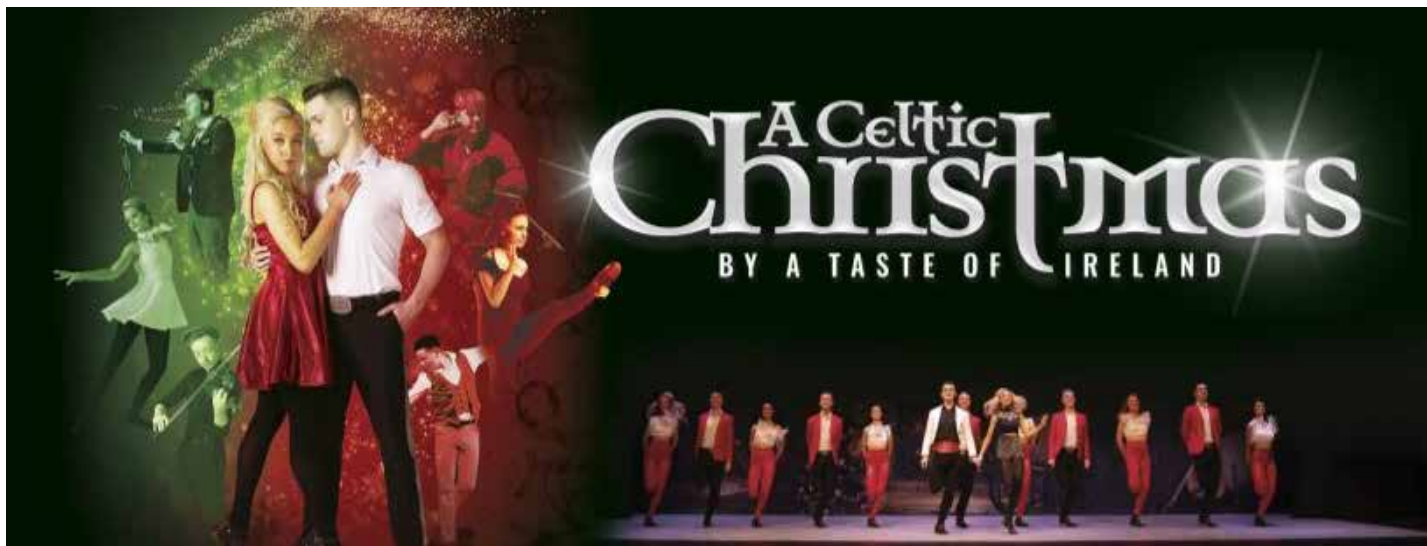
🔍 [police careers](#)

Authorised by the Victorian Government, 1 Treasury Place, Melbourne



**MADE
FOR
MORE**





A Celtic Christmas - A Taste of Ireland is coming back to COPACC this December!

Australian Irish dancing touring company PACE LIVE ENTERTAINMENT is bringing all the craic of Ireland down under this Christmas with their latest tour, A Celtic Christmas!! The cast features Irish dancing legend, Sean Michael McHugh, who concluded 15 years with Lord of The Dance to become the company's Dance Director. Sean will perform alongside world-class musicians and exceptional Irish dancers to bring Australian audiences the very best in the industry. Joining Sean will be the 2022 Senior Ladies World Champion in Irish Dance Ciara Loughran. The show brings the heart-warming spirit of an Irish Christmas into a feel-good extravaganza filled with laughter, Christmas cheer, and the pure joy of the festive season. The show has received rave reviews in Australia, New Zealand, and the UK in 2022, and will tour across South Australia and Victoria throughout November and December 2023.

Audiences can immerse themselves in the magnificence of Christmas in Ireland as they are transported to a land where energetic music and dance embody the beating heart of the festive season! This feel-good show aims to give audiences a bit of Irish charm and features a company featuring over 15 of the world's leading Irish Dancers and musicians, including stars of other well-known shows such as Riverdance and Lord of the Dance. Featuring a powerful mix of traditional tunes, heartfelt ballads and all your favourite

carols, A Celtic Christmas combines incredible music with jaw-dropping dance talent in an unforgettable night of storytelling and Irish charm.

Director & Producer, Brent Pace said, "In our Christmas show, we've curated a spectacular line-up, featuring unparalleled talents from across the globe. From world-class musicians to the most skilled Irish dancers, our stage is graced by the very best in the industry. But beyond the sheer technical brilliance, what sets this show apart is the heart-warming spirit of the Christmas season infused in every note played and every step danced. It's a production that embodies the essence of the holidays—a feel-good extravaganza filled with laughter, Christmas cheer, and the pure joy of the festive season. After receiving rave reviews in Australia, New Zealand, and the UK in 2022, we are absolutely thrilled to bring this enchanting experience to South Australia and Victoria this year."

Producer, Ceili Moore said, "Embracing the spirit of the season, our Christmas

show is a tapestry woven with the rich threads of Irish influence. With brand new music that captures the essence of our heritage and talents that echo through every note, we invite our audience to immerse themselves in a truly authentic Irish experience. It's a celebration of our culture, our traditions, and the immense talent of our performers, making this show not just a performance but a heartfelt journey into the soul of Ireland."

Australian Irish dancing duo Ceili Moore and Brent Pace have made a name for themselves on the world stage of Irish dancing over the last few decades, winning world championships and dancing alongside the likes of greats such as Michael Flatley, Riverdance and Gaelforce. With both of them coming from known Irish dancing families

in Australia, their union has seen the creation of live entertainment company Pace Live Entertainment Group, a uniquely Australian - Irish dance touring company which brings the magic and celebration of Irish dance and culture all over the country and the world.



Water Supply Specialists

WATER SOLUTIONS

74 Dennis Street, Colac
5231 1861

ALL THINGS WATER:

- PUMPS • PIPES
- FITTINGS • TANKS
- POOL CHEMICALS
- IRRIGATION
- WATER PURIFICATION
- SOLAR • REPAIR








contact us

NEWS and ARTICLES ARE MOST WELCOME

Include name and address of the sender
 Email news@winchelseastar.org.au
 Leave hard copy at IGA Supermarket

DEADLINES

5pm Fridays

4pm Sundays - hard copy articles left at IGA
 6pm Sundays - sports results and weekend events

FREE DIGITAL SUBSCRIPTION

winchelseastar.org.au

ADVERTISING

advertising@winchelseastar.org.au 0408 102 802
 600 online subscribers,
 250 copies printed for outlets around Winchelsea

follow us

ONLINE

winchelseastar.org.au

FACEBOOK

facebook.com/TheWinchelseaStar

PRODUCTION

| | |
|---------------------|--|
| Editors: | Carrie Fogan, Yvonne Stevens, Judy Cameron |
| Advertising: | Sasha Gauntlett, Neil McInnes |
| Design: | Tony Phelps, Susan Corby |
| Printing: | Winchelsea Community House |
| Website: | Winch Websites |

COMMITTEE

| | |
|-------------------|---|
| President: | president@winchelseastar.org.au Mick O'Mara |
| Treasurer: | treasurer@winchelseastar.org.au Cathy Cheadle |
| Secretary: | secretary@winchelseastar.org.au Tony Phelps |
| Members: | Linda Carter, Sasha Gauntlett, Neil McInnes, Judy Cameron, Yvonne Stevens, Carrie Fogan, |

© Winchelsea Star Org. Inc. All rights reserved
 Winchelsea Star Organisation Inc.
 Reg. No. A0053999F, ABN: 75 941 529 279
winchelseastar.org.au PO Box 5, Winchelsea, 3241
 Views expressed are not necessarily those of the
 Winchelsea Star or its Committee. The Winchelsea
 Star reserves the right to edit or not publish any article.



You can write for the Star

We want the Star to inform, engage, inspire, and interest the residents of Winchelsea and surrounds. And we need your writings to get there.

The Star has no actual reporters or designated writers - we publish what you send us. If you have some news, an opinion, an interest or perspective, or a story - we'd love you to send it in for publication.

The Star loves to hear anything of direct interest to the Winchelsea community. The more local content we can put in, the better!

How much can I write?

You can write just one article. You can start a new column about something you're interested in. You can send us a series of articles on a theme. What would **you** write about?

Your article can spread over 1 or 2 pages (approx 850 words) or you can write longer pieces and split them across multiple editions.

Add a photo or two, an article title and author's name (preferably).

Can you publish my photos?

A picture is worth a thousand words - but context is very interesting too! If you have a photo you'd like in the Star, add a few words describing where, when, who, why and/or what.

Ask permission to use photos

When you send us a photo, you give us implied permission for reproduction.

You have liability when publishing an image, so be sure you own the image or have written approval to use it. It is easy for copyright owners to find stolen images online, where the Star can be found.

Legalities

Our Editors will not approve anything libellous (ie. when a false statement is published in written form and does harm to a victim). The Star is a community newspaper - 'for' and 'against' opinions on contentious topics are welcome, but attacking individuals or groups is not.

We look forward to hearing from you.

Simply email editor@winchelseastar.org.au



CLASSIFIEDS

FOR SALE

Brand new handmade garden box. Made with corrugated iron and hardwood materials

\$950

Ring: Matt on 0476387439



Winchelsea Star COMMUNITY NOTICEBOARD FREE ADS

The Winchelsea Star is pleased to print Announcements of local Births, Engagements, Marriages, Birthdays, Anniversaries, Deaths and Funerals. Email editor@winchelseastar.org.au or leave at Winchelsea IGA

WINCHELSEA LIONS CLUB

Christmas cakes and puddings

Now available Ray 0406 371 239

Winchelsea Lions

annual community fundraiser.

LOCAL MUM LOOKING FOR WORK

elderly, gardening/ nursery, farm work, horses, cleaning, house sitting, anything.

Ph 52 672 987.

TUTORING

Literacy, Maths, English, to VCE and beyond. LOTE's ph 52 672 987.

OP SHOP

\$5 bag clothing

Starting from Fri 10/11 - Mon 20/11

NO MORE DONATIONS ACCEPTED FOR NEXT 2 WEEKS

SHREDDED PAPER

Winchelsea Lions Club has shredded paper suitable for bedding for pet mice, guinea pigs, chicken boxes or worm farms. Gold coin donation at Lions paper shed behind Senior Citizens, Harding St. 0476 475 422.

'WHAT A GREAT IDEA!'

Coffee cup holders available from participating coffee shops or Winchelsea Lions, 0476 475 422 100% funds raised go back into the community and saves on landfill.

\$2 for 2 cup, \$4 for 4 cup



WINCHELSEA GARDEN GROUP

get together

SATURDAY 18TH NOV, 10-11 AM

EVERYONE WELCOME,
COME HAVE A CUPPA AND A CHAT
VOLUNTARY SWAP TABLE FOR PRODUCE, CUTTINGS AND SEEDLINGS

HESSE (AGED CARE)
GOSNEY STREET
MAIN ENTRANCE
COURTYARD
GARDEN

OZ TREES NURSERY & TREE PLANTING SERVICES

- Affordable seedlings—over 200 species
 - Complete plantation service—farm forestry, shelter, aesthetics
 - Deep ripping & mound ploughing. Rotary bed forming
 - Our experienced staff will help you select species for your site conditions and needs
- Also available—tree planting tools, milk cartons, plastic tree guards & bamboo stakes



569 Warrowie Rd. Colac
P: 5233 6280 F: 5233 6393
E: info@oztrees.com.au
W: www.oztrees.com.au
Open Monday—Friday
9am—4:30pm

Phone OzTrees for professional advice,

MRP Steelworx

Matthew Partridge
p 0418 672 334
e mrpsteelworx@yahoo.com.au

Welding Service

- Onsite welding
- Farm maintenance
- Farm machinery & equipment repairs
- Cattle & sheep yards
- Custom built trailers
- Supply & install gates



5234 6585 0417 385 984
For all your domestic & stock water.
Also available for road and civil construction
Local owned and operated.

Scott McDonald
0423 413 829



direct TEMPORARY FENCING

FOR HIRE - SUPPLIED & ERECTED - 7 DAYS
GEELONG - BELLARINE - COLAC - SURF COAST
PHONE CAM 0417 310 800

DownRyte Excavations



- Excavations
- Drilling and Piling
- Rock Placement
- Tree and Stump Removal

Sean Hunwick
Mobile: 0409 447 288
Email: downryte@activ8.net.au

CONCRETER

Alister Aitken

No job to big or small

- Driveways - Carports - Crossovers - Footpaths - Sheds Slabs - Colored Concrete - Concrete sealing - Exposed Aggregate - & more -

Call or text for a no obligation free quote

Servicing our local Winchelsea & Surrounding Areas

alaitken.aa@gmail.com or Alister - 0411 871 950
A.B.N 47 228 574 460

B & H Modifications Bob Verity



55 Stephenson Road
Winchelsea 3241
Ph: 5267 2467
Mobile: 0411 610 678

Industrial Sewing Machine Work

Caravan Annexes, Trailer Covers,
Shade Sails, Alterations and
Repairs to
Camping and Tents.
Clear PVC Blinds
Repairs to CLEAN Horse Rugs
No Job Too Small
Email: bobverity@southernphone.com.au

WINCHELSEA CONCRETING

• Driveways • Sheds • Decorative Concrete • Raft Slabs

Robert Murphy
0438 235 237
winchelseaconcreting@outlook.com

Knuckey's Winchelsea Ph: 5267 2011

Knuckey's have in stock a complete range of batteries to suit tractor, heavy machinery, cars, utes

The largest range of the best oil for your vehicles—**CASTROL**—
'when only the best will do'

The largest range of V belts.
A, B, C, D M Sections
Bolts and nuts for all occasions
Steel cut to size

Help at hand for Fertility Care

The state Government is celebrating one year of public fertility care in Victoria - with more than 1,100 people having now taken up the chance to start the family they want.

The state Government has invested \$120 million to deliver the landmark program which is set to enable up to 5,000 Victorians every year access these services – delivering up to 3,375 treatment cycles - helping them save up to \$10,000.

This dream has already become a reality for one family, with Victoria's first baby conceived through the public fertility program arriving safely last month – little Felix, a healthy baby boy who was welcomed into the world on 17 October by parents Erin and Anthony.

Through the program 21 Victorians have become pregnant so far with patients accessing a range of treatments including in vitro fertilization (IVF), intrauterine insemination (IUI) or Intracytoplasmic Sperm Injection (ICSI).

Other services available through the program include fertility preservation, such as egg freezing for people undergoing medical treatment for illnesses that may compromise their fertility, such as cancer.

Delivered in partnership with the Royal Women's Hospital and Monash Health, a number of partner sites are also progressively opening across the state - including in regional Victoria, ensuring more people can access fertility care closer to home and helping hopeful parents cut down on unnecessary travel time and other indirect expenses.

Australia's first public egg and sperm bank was also launched in July. Initial interest from new potential donors has been strong, with the Royal Women's Hospital currently accepting egg and sperm donations from the Victorian community.'



Wanted - Volunteer Digital Mentors

Coming soon at Winch House, a free 1-day workshop that aims to put more help into the community for those struggling to adapt to an increasingly digital world.



Over the last few years, the Australian government has put together and fine-tuned a special website aiming to help anyone and everyone to get comfortable doing things online.

The Be Connected website ("every Australian online") is a fabulous resource, and it's completely free. It contains literally hundreds of bite-size mini-courses covering just about anything you might want or need to do online;

- online security
- device types
- all about apps
- shopping online
- scams awareness
- social media

You, your family & relatives, your colleagues are all welcome and encouraged to use the website, at beconnected.esafety.gov.au

But what about people that might need some assistance with the basics of getting online, and using such mini-courses?

That's where the digital mentors come in. Simply people that are ready to help, that are familiar with the Be Connected resources, and that can offer some friendly patient guidance.

There are all sorts of reasons that someone may be reluctant to hop online and get the benefits of our connected society - a fear of breaking things, a suspicion of being ripped off, embarrassment at being left behind,

bad experiences at school, or even just not seeing the point.

Digital mentors in our community are there to provide free help to master the basics (turning a device on or off, using a mouse or a keyboard/keypad, using a browser), demonstrate all the Be Connected website facilities, and set people on their way to successfully navigating the internet for whatever they need from it.

Digital mentors can do this anywhere, anytime, however they like. After completing a free 1-day workshop at Winch House, there's no further commitment. This is a government-funded project to build community, for community to help itself, grow and strengthen.

This free 1-day workshop aims to give digital mentors the background on the Be Connected resources, some tips and strategies for working with adult learners, and where to start with absolute beginners.

Does this sound like someone you know?

If so, please send them to digitalmentors.nhbarwon.org.au to register their interest.

They can also email digitalmentors@nhbarwon.org.au

'Digital Mentors for NH Barwon' is a government funded project under the auspice of Neighbourhood Houses Barwon, covering Geelong and the southwest.

Happy 99th birthday, Alec

by Lesley Christie

On Tuesday 31st October Alec McFarlane of Chelsea Lodge Winchelsea celebrated his 99th Birthday with family and residents. We were entertained by the Belmont singers.

A great afternoon was had by all who attended.



We Shall Remember Them

Remembrance Day 2023

11th hour of the 11th day of the 11th month

Winchelsea Memorial Cairns



WINCHELSEA GOLF CLUB

Ph 5267 2660

Great little country 9 hole golf course
run by an enthusiastic team of volunteers.



TEAM OF PIANISTS

RIGG BEQUEST CLASSIC MUSIC IN HISTORIC VENUES

2023-2024

BRITTEN AND BONIS AT BARWON PARK

BARWON PARK (WINCHELSEA)
2.00PM, SUNDAY NOVEMBER 19, 2023

*Complimentary afternoon tea
following recital*




*Full programme details appear
on the Team's website*

Principal sponsor

Sponsors

C & C RIGG BEQUEST
Administered by Equity Trustees

 NATIONAL TRUST

 SCHIMMEL
PIANOS

 Bernies Music Land

 HENKELL BROTHERS
WINE & SPIRITS

 teska carson

 A [C] F AUSTRALIAN
CULTURAL
FUND ORG AU

www.teamofpianists.com.au



Dance
ENROLMENTS
NOW OPEN!
Winchelsea
Dance Classes
REGISTER NOW


JAZZ - THEATRICAL TAP - HIP-HOP
 CLASSICAL BALLET - CONTEMPORARY
 Pre-School - Adults
 Beginner - Advanced Levels

www.melsdancecentral.com.au



Kyeema
 Rural Fencing Pty. Ltd.
 Jason Armstrong & Jay Hawker
 1080 Princes Lane, Ombensley, Victoria, 3241
0419 565085 (Jason)
0416 585817 (Jay)
 kyeemaliam@kyeemaliam.com.au
 Also incorporating domestic and rural tree trimming services.

52672192 R & K Creative Framing
 for all your framing needs
 free quotes
 pension discount
 specialist in Age & Disability Modifications
 Ray & Kim Jansen
 10 Witcombe st
 Winchelsea 3241
 Ray The Home
Maintenance HANDYMAN
 abn 47929623462
0414672192



mainly music
est. 1992

Fun, Interactive music sessions for
 pre-school children (0-4 y.o.) and
 parents/caregivers

When: Mondays from 10 to 11 am
 (runs during school terms)

Where: St Thomas' Hall
 25 Barwon Tce.

To Enquire ring: 0407838256

All About Mowers & Chainsaws
 Repairs to all makes and models of ride on mowers, domestic mowers, pumps, chainsaws, brushcutters and small engines.
 Trading Hours: Mon - Fri 8am - 5pm Saturday 8am - 12 noon
5267 2266 Cnr Princes Hwy & Lennox St Winchelsea
www.allaboutmowers.com.au
accounts@allaboutmowers.com.au







GUIM DESIGNS

CARPENTRY

- DECKS - SAUNAS
- FLOORING - PERGOLAS
- WEATHERBOARDS
- HORSE SHEDS
- CLADDING - FENCES

ALL THINGS TIMBER AND MORE...
 INSTAGRAM [guim_designs](https://www.instagram.com/guim_designs)
 CALL PAT ON
0401 232 674

Winchelsea Street Names

A well known family in the area.



ARMISTEAD STREET



Ernest John ARMISTEAD

Enlistment Details:

| | |
|--------------------|-----------------------------------|
| Service No: | 2116 |
| Stated Age: | 23 |
| Status: | Single |
| Occupation: | Labourer |
| Religion: | Church of England |
| Next of Kin: | Father: John Armistead |
| Enlistment Place: | Beech Forest |
| Enlisted Rank: | Private |
| Unit: | 22nd Battalions |
| Embarked: | 27.09.1915 |
| Discharge Date: | Killed in Action |
| Awards and Medals: | 1. 1914-1915 Star |
| | 2. British War Medal |
| | 3. Victory Medal |
| | 4. Memorial Scroll— To the Father |
| | 5. Memorial Plaque—To the Father |



Helen Mary Kininmonth Pre-School AGM

Helen Mary Kininmonth Kindergarten openly invites the local community and families of children attending the kindergarten program in 2024 to our 2023 AGM and Information Evening on Thursday 23rd November @7pm

Come along and see what HMK has to offer, explore the kinder classroom, meet Kristie Walters our 2024 teacher and see and hear the enriching experiences our Kinder program provides for young learners. View the current uniforms and collect an order form and other essential information.

We will also have information from the Home Interaction Program for Parents and Youngsters (HIPPY), Jenova Early Years Program and Hesse Rural Health dental team to showcase what they have on offer for families in the Winchelsea community. It is also a wonderful opportunity to discuss joining the 2024 parent advisory group. We look forward to seeing all our 2024 families there.

How YOU can support HMK Kindergarten

Become part of the parent advisory group (PAG)

In 2024 the PAG will primarily be a social/fundraising committee. However, you will also work closely with the Surf Coast shire Cluster. You attend short monthly meetings to discuss and organise ways to raise funds to spend on resources for your children. The committee also provides open communication between parents at the kinder and the cluster managers. This is a great way to meet new people and get involved in the kinder community.



Revitalised TAFE means more fee-free courses and more jobs

The Federal and State Governments will deliver up to 62,800 extra Fee-Free TAFE places in Victoria, ensuring more Victorians get the skills they need, for the jobs they want.

Commonwealth funding of almost \$107 million has been announced to give tens of thousands more people access to education and training in sectors needing workers.

Fee-Free TAFE supports training in areas of high demand, provides access to priority cohorts - including the most vulnerable - and helps students by removing financial barriers to study.

In Victoria, 143 unique occupations are in shortage, with construction, health services and early childhood care experiencing the highest number of occupations in shortage.

The free training push of 2024 will target sectors facing workforce challenges, with Fee-Free TAFE having already attracted a record 33,600 Victorian enrolments since the start of 2023.

So far Free TAFE enrolments in Victoria have supported:

- More than 13,600 enrolments in Care sector courses.
- More than 4,200 enrolments in Construction sector courses.
- More than 2,800 enrolments in Technology and Digital sector courses.
- More than 7,700 enrolments in other areas of national and state priority.

Victoria's most enrolled Free TAFE courses include:

- Diploma of Nursing with 4,833 enrolments.
- Certificate IV in Training and Assessment with 2,426 enrolments.
- Diploma of Community Services with 2,300 enrolments.
- Certificate IV in Cyber Security with 2,220 enrolments.
- Certificate IV in Accounting and Bookkeeping with 2,104 enrolments.

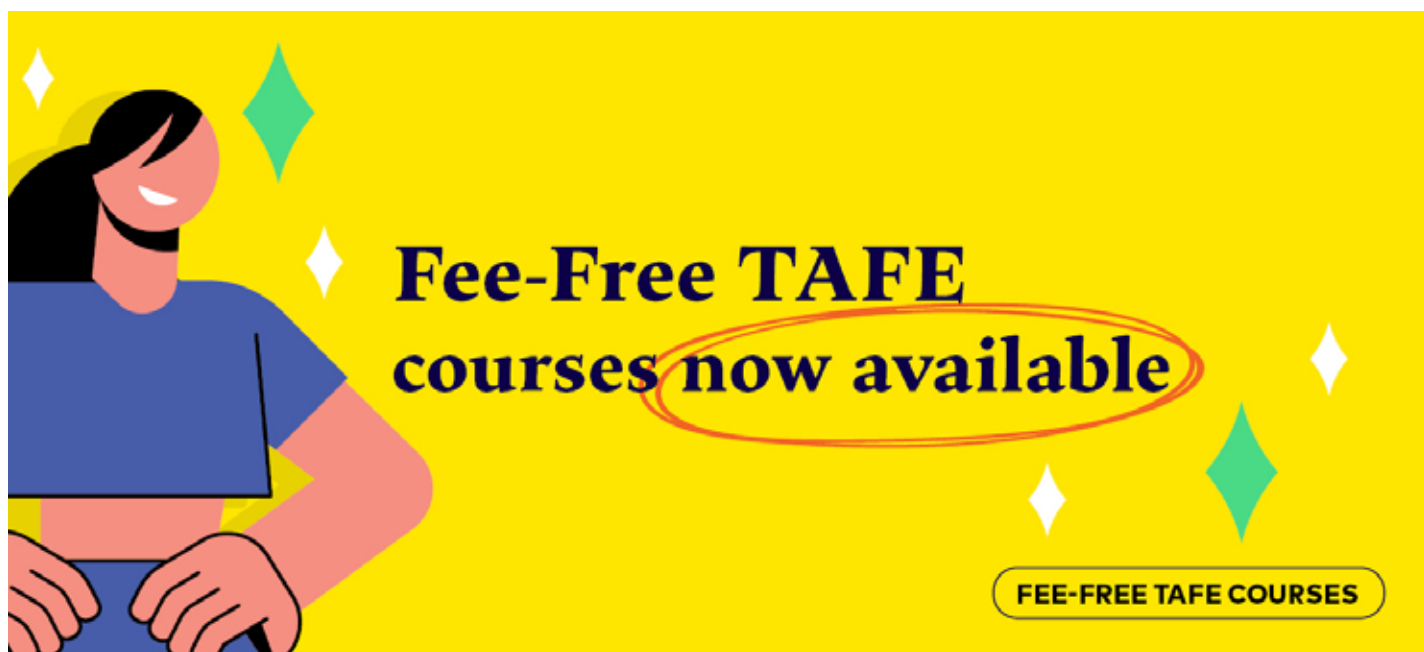
Free TAFE has been a game-changer across Victoria, with more than 152,000 students saving more than \$384 million in tuition fees since the program began in 2019.

Students in a Diploma of Nursing could save around \$15,400, students studying a Diploma of Community Services could save around \$7,800, and those looking to build a career pathway through a Certificate IV in Cyber Security could save around \$3,800.

The funding for Fee-Free TAFE is in addition to federal funding through the National Skills Agreement (NSA) of up to \$3.1 billion for Victoria.

Set to begin in January 2024, the landmark five-year National Skills Agreement (NSA) was developed under principles agreed by National Cabinet to embed nationwide cooperation and strategic investment across Australia's TAFE and training sector.

A new National Stewardship Model will make sure students are getting the skills they need in areas of national priority and industry is getting a pipeline of the skilled workers it needs most.





Social Workers
Nurses

Search  **jobs that matter**

Psychologists
Occupational Therapists

MAKE A DIFFERENCE WITH A CAREER IN MENTAL HEALTH

Victoria's mental health and wellbeing system is changing.

There's never been a better time to join Victoria's public mental health and wellbeing system. There are hundreds of rewarding jobs and career opportunities where you can make a difference to Victorians within a supportive and encouraging environment.

To make a difference to your mental health career, visit
jobsthatmatter.vic.gov.au

Authorised by the Victorian Government, 1 Treasury Place, Melbourne



How Healthy is our River?

Article: Sylvia Maseyk

Pics: Kerry Butcher

On Saturday 4 November, Winchelsea Land & River Care (WLRC) volunteers learnt how to test the quality of our river water.

Our trainer was Deirdre Murphy, Regional Citizen Science Project Officer from Corangamite Catchment Management Authority (CCMA). Deirdre separated the training into two strands: diversity and abundance of water bugs, and chemical testing.

While the adults in attendance might have thought the water bugs part was “for the kids” it was clear that everyone thoroughly enjoyed sifting through the specimen trays to reveal freshwater shrimps, mayflies, water boatmen, and caddis fly larvae that disguise themselves as sticks and leaves. By categorising and counting all the bugs according to an old school pencil-and-paper algorithm, we learnt that the Barwon at Winchelsea is in good to very good health: we have a diversity of bugs, including some very sensitive species.

Then the chemistry lesson began. We learnt how to test for water turbidity, acidity, oxygenation, salinity, and phosphorous content using a science kit that is retained locally for monthly measurements. Again the tables were turned on the adult learners: some of the kids had already “done all this at school” as part of the River Detectives program at Deans Marsh Primary School.

We discovered that while the Barwon at Winchelsea has good acidity and electrical conductivity levels, the phosphorous and turbidity was a little too high. This can be caused by stormwater, but in the absence of recent storms, is likely caused by organic compounds entering the waterway: fertilisers, car washing into stormwater drains, and wait for it... dog poo. Please pick up after your pet. It has ramifications bigger than someone else stepping in it.

Data collected by volunteers is added to the Waterwatch Victoria data portal (www.vic.waterwatch.org.au). This publicly accessible website contains statewide data contributed by individuals, landcare groups, schools and clubs, and is used by researchers all over the world.

(continues next page)



Deirdre Murphy (far left) training Winchelsea Land & Rivercare volunteers in water bug identification



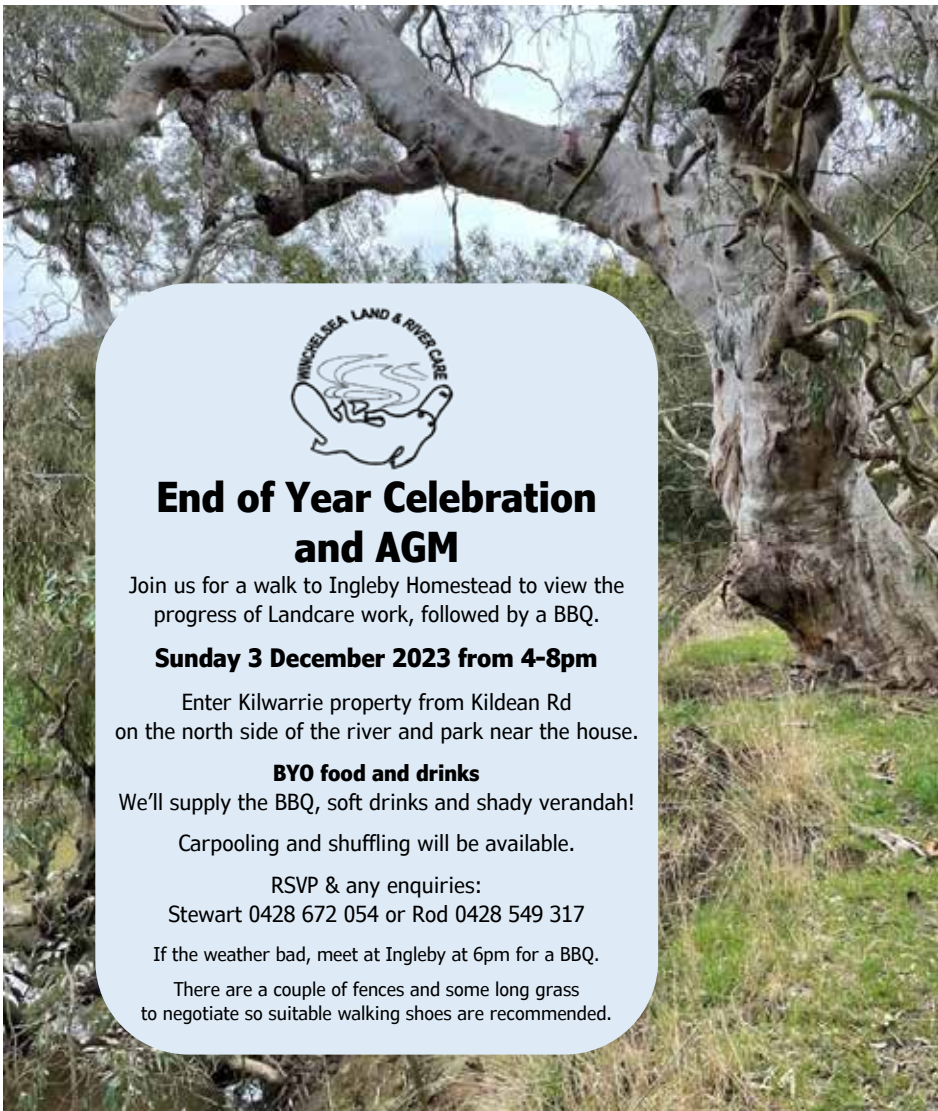
WLRC volunteers have contributed to the care of Winchelsea's riverbank environment since 1995. Landcare began in Australia in the 1980s and brings together the knowledge of farmers, conservationists, scientists and first nations people to improve both farm quality and natural ecosystems.

At 9:00am on the first Saturday of almost every month (December 2 is our next), the Winchelsea group gathers at Guye Reserve in Barwon Terrace before heading off to plant local species and remove weeds along the river. After work, a coffee and chat keep us all connected. If you're new to Winchelsea, it's a great way to meet other nature lovers.

The River Detectives schools program opens again for registration on 15 November.



pH testing the river water



End of Year Celebration and AGM

Join us for a walk to Ingleby Homestead to view the progress of Landcare work, followed by a BBQ.

Sunday 3 December 2023 from 4-8pm

Enter Kilwarrie property from Kildean Rd on the north side of the river and park near the house.

BYO food and drinks

We'll supply the BBQ, soft drinks and shady verandah!

Carpooling and shuffling will be available.

RSVP & any enquiries:

Stewart 0428 672 054 or Rod 0428 549 317

If the weather bad, meet at Ingleby at 6pm for a BBQ.

There are a couple of fences and some long grass to negotiate so suitable walking shoes are recommended.



NOTICE OF AGM

Winchelsea Land and River Care
Annual General Meeting

Sunday December 3rd 2023 at
6pm

to be held at
'INGLEBY', Ingleby Rd Winchelsea

Business

- President's report

-Financial report

-Election of Committee





Winchelsea Community House and Shire Hall

Monday-Friday 9am -2pm (03) 52672028

28 Hesse Street, Winchelsea

www.winchhouse.org.au reception@winchhouse.org.au

Winch House Shire Hall Report 2022/3

Jill Evans, Community Developer

Winchelsea Community House agreed to take on management of the former Shire Hall in 2022, under a three-year funding agreement with the Surfcoast Council. A Community Developer has been employed for 15 hours a week (it is not feasible to take on the Shire Hall without a paid staff member) and there is some funding for other incidental costs. The agreed approach to managing the Shire Hall is as follows:

Year 1 (2022) – a foundation year to discover possibilities

Year 2 (2023) – growth and embed, formalize arrangements with support

Year 3 (2024) – evaluate, is this a good fit for the WCH?

We are into the second year of managing the Shire Hall and reflecting on progress - it is a story with two very different themes.

The first theme mirrors the year 2 approach – grow and embed and formalize arrangements. A look at weekly bookings will give us an idea of who and for what purpose. I will make up a week for this exercise;

- Start with Monday, lunch for 66 people from all over Victoria meeting in Winchelsea before heading to Lorne for a conference. Food from a local cafe, fruit platters, a local person brought in floral pieces from her garden for the most beautiful table decorations, and Wendy and Vee on hand to meet & greet. A success not only for participants, but for the Shire Hall and the Community House reputation and finances. This does not happen often but it could be something to focus on in 2024.
- Tuesday is usually quiet and, in the evening, a private singing group use the space for a small fee.
- Wednesday sees a rise in activity. The Riverlee Arts Collective take



over the space in the morning, a self-sufficient group. Later in the day the Community Choir gather for an hour or so, followed by Growing Winchelsea's Community Meeting.

- Thursday is a popular day for maternal and child health nurses to engage with young parents or story time with the Geelong Regional Library Corporation. It is also set up day by volunteers for an exhibition which can be set up so that other groups continue to use the space.
- Friday is Chatty Café where people drop in to meet others in a friendly relaxed environment, run by volunteers and developing as an important point of social connection.
- Saturday is an instruction/learning day eg. food safety, responsible service of alcohol. It can also be for private celebrations, birthdays, weddings, funerals.
- Sunday is market day. Work starts early from about 6.30. 30 – 40 stalls set up and hundreds of locals browse or catch up with others. The Devonshire teas are provided by organisations raising money for their cause.

So, this sets the scene for what is possible usage of the building. People love it and want to be here.

The second story is a different but important one;

In this financial year it is estimated the Shire Hall has only returned the dollars needed to cover the utility costs and some minor maintenance costs (although at this stage we have not

been given a clear picture by Council of these). The Community House has been able to fund an upgrade of the kitchen, installation of a commercial dishwasher, installation of a coffee machine and purchase of large television monitor. Council has installed reverse cycle air conditioners. The ongoing issue is the day to day running of the Shire Hall and increasing usage which requires a paid position to manage and administer. Unfortunately, there is not enough income to fund this component. Try as we have, there is not the regular activity to generate sufficient funds.

Surfcoast Council staff have use of the space at no cost and this is fine for a day or less. There has been some usage (eg. Arts Trail and NAIDOC week) when the Hall is used for up to 10 days when we are unable to let the space out to paying users.

The Visitor Information service runs from the Shire Hall on Fridays, Saturdays and Sundays. The volunteers have found this a difficult transition as they are often unable to use the space because of private functions. For example, on Community Market days there is no room for them causing frustration which they have expressed to Council.

The next twelve months are important in developing more systems that can be used for online management, resulting in work that can create a future for this valuable community facility.



SERVICES AND ACTIVITIES IN WINCHELSEA

VLIN TRAIN SERVICES

TO MELBOURNE:

Mon - Fri 6:41 am, 7:57am, 11:14am, 2:08pm, 7:23pm
Sat - Sun 9:26am, 1:30pm, 7:18pm

TO WARRNAMBOOL:

Mon - Fri 8.56am, 11.55am, 2:50pm, 5.27pm,
6:45pm, 8:50pm
Sat - Sun 8:47am, 2:46pm, 8:34pm



COUNTRY WOMEN'S ASSOCIATION

7pm second Wednesday of month
Winchelsea Senior Citizens' Hall



WINCHELSEA SES

Every Wednesday
Visitors and inquiries welcome
0408 102 802



**WINCHELSEA AND DISTRICT
COMBINED PROBUS CLUB**
Meets 1st Monday of the month at 10am.
Senior Citizens Rooms,
Harding St, Winchelsea.
New members always welcome.
Enquiries Linda 0439 817 263.

WINCHELSEA TRANSFER STATION

55 Cressy Road, Winchelsea

| | | | |
|-----------|--------------|----------|-------------|
| Monday | Closed | Tuesday | 2pm-4pm |
| Wednesday | Closed | Thursday | 2pm - 4pm |
| Friday | Closed | Saturday | 1.30-3.30pm |
| Sunday | 9.30-12.30pm | | |

Accepts household garbage, mixed commercial and industrial waste, mixed construction and demolition waste.
Accepts recyclable materials.
Accepts one recycle bin two waste bins.
Does NOT accept clean fill.



WINCHELSEA GIRL GUIDES

Our Unit meets at the Catholic Church Hall,
Harding St Winchelsea each Monday 4.30pm-6pm
All girls 5yrs- 15yrs Welcome!
Contact Yvonne Orchard 0448 672 630
or Bonnie Stokes 0401 386 274

WINCHELSEA TAXI

0429 672 888 or 5267 2888

Wheelchair accessible
10 seater bus available.



BUS TO THE HUB

For reservations on the weekly bus
to the Eastern Reserve Hub,
please phone 52671202.

SURF COAST MOBILE LIBRARY

Hesse St, Fridays, 2pm-5pm
Surf Coast Mobile Library
parked in Hesse Street (outside Shire Hall)
Fridays between 2:00 and 5:00pm
unless it is a Public Holiday.

1ST MODDA AND 1ST WINCHELSEA SCOUT GROUP



eyes: Tuesdays of school term 5-6pm
Cubs: Mondays of school term 6:30-8pm
Scouts: Tuesdays of school term 6:30-8:30pm
All at Modewarre Hall, Cape Otway Rd
Venturers: Wed at Walton's Rd Venturer Den
Contact Marie McPadden 0409 330147

WINCHELSEA PLAYGROUP

Every second Thursday 10am-12pm
St Thomas Anglican Church Hall
cnr Barwon Tce and Hopkins St, Winchelsea
Contact: Melissa 0456181268
Facebook - Winchelsea Playgroup 2019
New families welcome

The
Winchelsea Repertory Society Inc.
proudly presents



Under the Big Top

The Hub,
Eastern Reserve, Winchelsea
70 Hopkins Street, Winchelsea



Friday 10th November

(Supporting Winchelsea Bowls Club)

Saturday 11th November

(Supporting Modewarre Cricket Club)

Friday 17th November

(Supporting Waurm Ponds/Grovedale
& Corio Bay Lions Clubs)

Saturday 18th November

(Supporting Winchelsea Repertory Society)

Tickets are \$55 each and includes a 3 course meal (BYO Drinks)

Doors open at 6:30. Patrons must be seated by 7pm

Tickets to be purchased through TryBooking <https://www.trybooking.com/CLYZN>



Produced with the permission of Play on Words

Bushfire preparedness: play your role

With hotter and drier weather predicted this bushfire season, understanding and managing bushfire risk in the Surf Coast Shire is vital.

Fighting fires for over 42 years, career firefighter, and Country Fire Authority (CFA) Surf Coast District Commander, Wayne Aylmer, said everyone plays a role.

“The forecast drying patterns across the state will be closely monitored by Victorian emergency services as we approach the summer season,” Mr Aylmer said.

“We work closely with Forest Fire Management (FFM)Vic to deliver planned burns on public and private land. This helps reduce risk and improve the safety of communities.

“While the fire services are doing everything we can, we need the public to be engaged and involved for their own safety.”

Mr Aylmer said he has seen firsthand the impact not being fire ready can have.

“Not extinguishing a campfire or a burn off properly can have devastating and lasting impacts on the community,” Mr Aylmer said.

“Being prepared, having a plan, and leaving early can mean avoiding a family tragedy and experiencing the grief that comes with it.

“Victoria is one of the most bushfire-prone areas in the world, so it’s vital to plan ahead.”

FFMVic Deputy Chief Fire Officer David Rourke said they work year-round and are well prepared for an earlier start to the bushfire season.

“We focus on minimising bushfire risk for communities and the environment through planned burning, slashing and maintenance of strategic fuel break networks.

“The community has an important role as well. Everyone needs to understand their local risks, stay informed, and act now to prepare themselves and their properties.”

Mayor Liz Pattison said living in and around the Otways means residents and visitors need to be aware of the risks throughout the fire danger period.

“While we appreciate this natural environment, the majority of bushfire risk to life and property is through vegetation on private land in and around our townships,” Cr Pattinson said.

“Bushfire modelling shows planned burning by fire agencies can reduce the risk to lives and properties by 30 to 40% in the Otways.

“But planned burns are weather dependent and some years are less possible. Action taken on private property can greatly reduce the risk to lives and properties.”

How to prepare for increasing bushfire weather conditions

Before and during every bushfire season, clean up your property, focusing on:

- Removing fine fuels (leaves, twigs, keeping grass short).
- Reducing shrubs, ensuring trees have good separation from other trees and shrubs, and other flammable objects around your house/sheds etc.
- Vulnerable points such as windows, decking, under house storage etc.

Learn more via cfa.vic.gov.au/bushfireplan

Embers are responsible for 80% of houses lost in bushfires.

By managing vegetation and reducing fuels you can reduce the risk of house loss due to embers. Vegetation management is most important in the lead up to and during summer.

Learn more via surfcoast.vic.gov.au/FireReady

By using your green waste bin, you can dispose of over 12 cubic meters of green waste per year. Council has provided three free green waste disposal vouchers with the October rates notice for every property. These vouchers are valid in November and December to help clean up your garden of bushfire fuels.

Whether you are living, working, or visiting the Surf Coast Shire, it is essential to understand, plan and prepare for bushfire. The Australian Fire Danger Rating System provides triggers for actions.

Plan ahead for the bushfire season at cfa.vic.gov.au/warnings-restrictions



**NO MATTER WHAT
YOUR PROBLEM, DODDS
ELECTRIX CAN DEFUSE
THE SITUATION.**

RURAL, INDUSTRIAL, COMMERCIAL, DOMESTIC
PHONE 0438 887 360
EMAIL: DODDSY@FASTMAIL.FM
PO BOX 36 BIRREGURRA, VICTORIA 324
REC: 17520 ABN: 64 581 250 880



5234 6585 0417 385 984

*For all your septic tank, grease traps
and interceptor pits servicing.
Locally owned and operated*

Antique Repairs

By **Doug Burns** est. 1976

- All Furniture
- French polishing
- Carving
- Veneering
- Wood Turning
- Porcelain



Unusual Requests Welcome

180 Barwon Terrace, Winchelsea

0428 672 704



**Winchelsea
Supermarket**

Trading Hours

Monday to Saturday

8.30am to 7.30pm

Sunday

10am to 7pm

Ph: 5267 2676

29 Main St, Winchelsea

TRENCHES & HOLES PTY LTD.



PHILLIP ROBERTSON

☎ **0427 672 945**

WINCHELSEA

- General Earth Works
- Driveways
- Trencher
- Kanga Loader
- Grader
- Excavator Work (3.5 & 6.5 Tonne)
- Tip Truck
- Rock Breaker
- Post Holes & Shed Footings

A.B.N 74006896898

M & L DRAYTON

PLUMBING SERVICES

REG No 24356 C/A No C02594

- Domestic and Rural Plumbing
- Roofing
- Sewerage & Septic
- LPG & Natural Gas Connections
- Motorised Drain Cleaning
- Backhoe Hire

Phone Mark 5288 7244

PO BOX 98 WINCHELSEA 3241

Mobile 0428 520 142

**WAZZA'S
WATER CARTAGE**

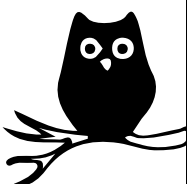
*Stainless Tanker Up to 22,000 ltr loads
Barwon Water Registered*

Domestic & Rural Water Supplies

Call Wazza

Mob: 0428 877 260

Email: wazza@wazzas.com.au Web: wazzaswater.com



Café La Hoot

have you tried
'owl' coffee?

1 willis st cafelahoot@gmail.com 0407 528 999

Winchelsea Churches



Winchelsea Uniting Church

Hesse St, Winchelsea 3241
uca.winchelsea@gmail.com
0475 777 301
Services 9.30am Sundays

St John's Catholic Church

Mass Times - November
Winchelsea - St. John the Baptist
@ 6pm Sat. NOV. 4/11/18

Harding St, Winchelsea 3241
Father Joseph Panackal
0404598558

St Thomas' Anglican Church

Barwon Tce, Winchelsea
Rev'd Phil Jacobson
stthomaswac@gmail.com
0477 672 042

Thought for the Week

"When you're troubled and worried and sick at heart and your plans are upset and your world falls apart. Remember God's ready and waiting to share the burden you find too heavy to bear."

John Bader,
Former U/C Accredited Lay Preacher

HESSE RURAL HEALTH ANNUAL GENERAL MEETING

Hesse Rural Health's 2023 Annual General Meeting will be held at The Hub, Eastern Reserve, Winchelsea and via Zoom on Wednesday 29th November, 2023 at 7pm.

Please contact Hesse on (03) 5267 1200 or reception@hesse.vic.gov.au to RSVP and receive the remote link invitation.

BUSINESS:

To receive the report of the Board of Directors and the audited Statements of Accounts for the year ended 30 June 2023.



Applications are invited for Board Director at Hesse Rural Health

The Minister for Health, the Hon. Mary-Anne Thomas MP, is pleased to invite applications for part time director positions at Hesse Rural Health Service. The positions start on 1 July 2024 and appointments are for two to three years.

These positions provide an exciting opportunity for Victorians to contribute to the health and wellbeing of our communities. Applicants are selected for their capabilities, including personal and professional attributes, experience, knowledge, and skills that contribute to the strategic leadership and oversight of health care for the Victorian community.

The Victorian Government is committed to ensuring boards reflect the rich diversity of the Victorian community.

Applications are welcomed from people of all ages, Aboriginal and/or Torres Strait Islander people, people with disability, people from culturally and linguistically diverse backgrounds and from lesbian, gay, bisexual, trans, gender diverse, intersex and queer people.

Safe and high quality healthcare for all Victorians is a priority of the Victorian Government. Applicants must be able to demonstrate and provide evidence in support of the capabilities they identify in their applications.

Applications close at Midnight Sunday 19 November 2023.

Further information about Victorian health service boards and how to apply, please go to www.health.vic.gov.au/board-applications

For all enquiries regarding the Board, please contact Kate Lockhart, Executive Assistant on (03) 5267 1200 or email: kate.lockhart@hesse.vic.gov.au





WINCHELSEA FACEBOOK

Non-profit community Groups and Pages

| | |
|---|--|
| What's on in Winchelsea | facebook.com/WhatsoninWinchelsea |
| Winchelsea FREE | facebook.com/groups/winchelseafree |
| Winchelsea Community Information | facebook.com/groups/207538644446972 |
| Winchelsea Classifieds 3241 | facebook.com/groups/216942861684082 |
| Winchelsea Lost and Found | facebook.com/groups/768187693217518 |
| Winchelsea Op Shop | facebook.com/HospitalAuxiliaryOpShopWinchelsea |
| Winchelsea Shire Hall | facebook.com/WinchelseaShireHall |
| Winchelsea Community House | facebook.com/winchelseacommunityhouse |
| Winchelsea Coronavirus Community Support | facebook.com/groups/2676957719207927/ |
| The Green Winchelsea Residents | facebook.com/groups/515322772623126 |
| Growing Winchelsea Inc | facebook.com/growingwinch |
| Winchelsea Star | facebook.com/TheWinchelseaStar |
| Winchelsea Movie Club | facebook.com/winchelseamovies |
| Winchelsea Community Market | facebook.com/100083362387611 |
| Winchelsea Land and River Care Group | facebook.com/envirowinchelsea/ |
| Upper Barwon Landcare Network | facebook.com/UpperBarwonLandcare |
| Winchelsea & District Historical Society Inc | facebook.com/Winchelseaanddistricthistoricalsociety/ |
| Winchelsea Wildlife Shelter | www.winchelseawildlifeshelter.com/ |
| SCARS - Surf Coast Animal Rescue Service | facebook.com/groups/415211698950674 |
| Winchelsea Gardeners | facebook.com/groups/779878518703025 |
| Winchelsea & District Historical Society | facebook.com/Winchelseaanddistricthistoricalsociety/ |
| Winchelsea Repertory Society Inc | facebook.com/winchrep/ |
| Winchelsea Globe Theatre | facebook.com/Winchelsea-Globe-Theatre-164790897641678 |
| Winchelsea Uniting Church | facebook.com/winchelseaunitingchurch |
| St Thomas' Anglican Church | facebook.com/StThomasWinchelsea |
| St John the Baptist Catholic Church | facebook.com/pages/Winchelsea-Catholic-Church/101775670163180 |
| Winchelsea Mainly Music | facebook.com/groups/668500343953191/ |
| Winchelsea Health Club | facebook.com/WinchelseaHealthClub |
| Winchelsea Playgroup 2019 | facebook.com/groups/551663435367031 |
| Winchelsea Girl Guides | www.guidesvic.org.au/ |
| Winchelsea/Modewarre Scouts | facebook.com/1stModewarreScouts |
| Winchelsea Fire Brigade | facebook.com/winchelseafirebrigade/ |
| Winchelsea SES | facebook.com/groups/WinchSES |
| Country Women's Association - Winchelsea Branch | facebook.com/pg/CWAWinchelsea/ |
| Winchelsea Bowls Club | facebook.com/Winchelsea-Bowls-Club-533783333344345/ |
| Winchelsea Blues Cricket Club | facebook.com/groups/8999049476/ |
| Winchelsea Blues FC | facebook.com/WinchelseaFNC/ |
| WYLD Winchelsea Youth Leisure and Drop in | facebook.com/groups/569737570027065/ |
| Lions Club of Winchelsea | facebook.com/LionsWinchelsea |
| Winchelsea Probus | facebook.com/893535194971083 |
| Winchelsea Golf Club | facebook.com/winchelseagc/ facebook.com/groups/1324943804676697 |

Pawsitive News For Victoria's Pets

The state Government is improving Victoria's animal welfare services and providing free or low-cost pet desexing services to pet owners in need.

The successful recipients of the third round of the Pet Desexing and Equine Rehabilitation grants have been announced.

The overpopulation of dogs and cats poses a significant threat to our environment and also puts pressure on Victoria's animal shelters - these grants tackle this problem by ensuring all Victorians – no matter their income, can desex their pets.

The new round of grants includes \$500,000 to support councils and not-for-profits to deliver free or low-cost desexing programs for cats and dogs and \$330,000 to organisations that rescue, rehabilitate, and rehome horses.

Since 2021, the state Government has delivered more than \$1.5 million in Pet Desexing grants to 32 organisations across the state.

Second Chance Animal Rescue has been awarded \$75,000 in the latest round of the Pet Desexing Grants program and aim to host a series of free 'desexathon' days – with the goal of desexing 340 cats.

Also officially opened are applications for Round 11 of the Animal Welfare Fund Grants Program – offering grants of up to \$200,000 to support animal shelters, community foster care networks, expand or upgrade their equipment or services – while also helping veterinary clinics provide low-cost services.

Eligible organisations can now apply for funding for projects that benefit companion animals such as rabbits, caged birds and 'pocket pets', in addition to cats and dogs.

Since 2014, the Animal Welfare Fund has awarded more than \$10 million to not-for-profit animal shelters, foster care organisations and community vet clinics to improve companion animal welfare in Victoria.

The Victorian Budget 2023/24 builds on the state Government's strong support for animal welfare and pets - with an additional \$20 million to deliver more dog parks, establish a new wildlife hospital and support animal welfare organisations.

Applications for Round 11 of Grants are open until 9 December 2023. To apply, visit animalwelfare.vic.gov.au.

Barwon Water takes out Victorian water award



The Barwon Water-led Biochar to Batteries research project gained state-wide recognition last week, when it won the Australian Water Association's Victorian R&D Excellence Award in Melbourne on Thursday night.

Barwon Water's nomination for the award explained how the Biochar to Batteries project was working to achieve an innovative use for biochar which exploits its stable carbon properties.

Barwon Water Managing Director Shaun Cumming said that thanks to collaboration with South East Water, Department of Energy, Environment and Climate Action, the City of Greater Geelong, RMIT University and Deakin University, the Biochar to Batteries project had undertaken applied research that demonstrated the suitability of biochar derived from wastewater treatment, food, and garden organics for use in Sodium Ion Batteries and supercapacitors, both of which use highly conductive carbon to transfer energy.

"Both of these energy storage technologies rely on highly conductive carbon materials to efficiently transfer energy."

The research project is linked to the development of the Regional Renewable Organics Network, which will produce biochar from organic waste.

Biochar, created through a carbonisation process involving high-temperature baking of organic waste, serves as a solid

carbon sink, effectively sequestering carbon that would otherwise be released into the atmosphere during waste decomposition.

"By repurposing organic waste into high-value biochar, we will contribute to the circular economy, reduce waste, and turn what was once considered waste into a valuable resource," Mr Cumming said.

"This research not only helps mitigate climate change impacts but also enhances Victoria's position as a hub for innovation and research in sustainable technologies.

"The Biochar to Batteries project underscores the vital role that the water sector can play in producing critical resources for the circular and new energy economy."

Barwon Water will now be eligible to enter the project for the national awards.

For more on the awards, see <https://www.awa.asn.au/upcoming-events/vicgala2023>.

For more on the Regional Renewable Organics Network, see <https://www.yoursay.barwonwater.vic.gov.au/RRON>.



Winchelsea Pram Walks

Explore pram-friendly walking routes in your local area with a member of the Surf Coast Shire Child and Family Health team.

Come along, have a chat, and meet other parents with little ones!

No bookings required, simply show up!

Third Tuesday of the month
Cafe La Hoot, 1 Willis Street,
Winchelsea, 3241

FREE

Tuesday, 19 September 2023 |
10:00 AM - 11:00 AM

Tuesday, 17 October 2023 |
10:00 AM - 11:00 AM

Tuesday, 21 November 2023 |
10:00 AM - 11:00 AM

Child and Family Health 5261 0549
childandfamily@surfcoast.vic.gov.au



WINCH WEBSITES
WEB SOLUTIONS SIMPLIFIED.

WEBSITES

GROW business
INCREASE reach
SAVE time



Find out what a website could do for you
winchwebsites.com.au
04 887766 20



**Your Taxation
&
Superannuation
Specialists.**

Winchelsea

5267 2673

www.surftax.com.au

ven1g10064



**SOUTHERN
GRAIN STORAGE
PTY. LTD.**

AG SUPPLIES FERTILISER GRAIN STORAGE SEED CLEANING

(03) 5267 2351

Simco Plumbing and Gasfitting

24/7 Emergency service Ph:0400643976

- All General Plumbing and Gasfitting
- Roof and Gutters, Hot Water service changeover
- Split Systems, Air Conditioning and Wood Heaters
- Irrigation, Septic and Treatment plants
- Excavation, Bobcat and Tipper
- Rain water Tank installation
- Renovations and Extensions
- Gas conversions and servicing

Simon McGillivray

Lic:109610. Free quotes, Fast and friendly service

DAVIC AG

CONTRACTING AND EARTHMOVING

For all your harvesting needs

Mowing, raking, round bailing, paddock prepping, spreading and sowing

Call Dave on **0417 579 973** Bambra

Discover the diverse world of pollinators

Australian Pollinator Week starts next month and this year it's all about understanding pollinator diversity.

Many people know about the important role honey bees play in pollinating crops, but there are many more unsung heroes of pollination including beetles, flies, butterflies, moths and native bees, creatures whose contribution is often overlooked.

A nine-day festival aims to reverse this lack of understanding of Australia's diverse pollinators, with activities including Pollinator Picnics, webinars, pollinator art activities, bee-friendly gardening sessions, and more.

Founded by Australian native bee specialist Dr Megan Halcroft, Australian Pollinator Week is dedicated to raising awareness of the vital role all pollinators play in supporting Australia's food production systems, biodiversity in our farms, parks and gardens and in the natural environment.

"Bees and other pollinators are a fundamental part of our ecosystems," Dr Halcroft says. "If we look after insect pollinators by increasing floral diversity and reducing chemical use, we're looking after everything else."

"If you look after the little things, the whole web of life is supported."



Australian Pollinator Week starts on 11 November and runs to 19 November. Highlights of this year's event include the Australian Pollinator Count and the Pollinator Photography Competition, along with Bee Friendly Farming and Powerful Pollinator information sessions and webinars. A Discover Bees webinar will discuss the fascinating art and science behind the naming of new bees in Australia.

Australian Pollinator Week is coordinated by the Wheen Bee Foundation, and CEO Fiona Chambers says the Australian Pollinator Count plays a critical role in understanding pollinator diversity.

"Despite the vital role pollinators play in supporting biodiversity, little information is available about the vast majority of pollinators in Australia," Ms Chambers says.

"More information is needed about these populations, so informed decisions can be made to ensure their wellbeing and safeguard ecosystem health."

Australian Pollinator Week has grown significantly each year since it started in 2015, with schools, community groups, farmers' markets, Rotary clubs and Landcare groups all getting involved, taking the time to recognise and celebrate the important role of pollinators.





Too many workers face this everyday It's never OK

Work Safe
VICTORIA

Reducing workplace harm.

worksafe.vic.gov.au/itsneverok

VICTORIA
State Government



Winchelsea Community Market

Shire Hall
9am - 1pm



**Sunday
3rd December**



Moriac Veterinary Clinic

0447 781 089

PHONE 24 HOURS

784 Hendy Main Road Moriac

info@moriacvet.com

www.moriacvetclinic.com.au

HOURS // Monday - Friday: 8am - 5pm

Winchelsea
**Medical
Clinic**

Located at 36 Main Street, Winchelsea 3241

For any enquires or bookings please contact the clinic on 5292 8028.

Or visit our website: www.winchmc.com.au

Opening Hours:

Monday - Friday 8:00am - 5:00pm

(Monday Evening Clinics available and selected Saturdays)



Our clinic accepts online bookings via the app called HotDoc.

Download the app on the App Store or Google Play or head to our website.

**Winchelsea
Star**

Since 1977

**WINCHELSEA
LIONS CLUB**

**PAPER
RECYCLING**

Paper depot rear of
Senior Citizens Rooms
Harding Street
NEWSPAPERS,
MAGAZINES,
PHONE BOOKS WANTED



RAISING FUNDS FOR
OUR TOWN & DISTRICT
5267 2011 or 0408 520 606



**MCGREGOR
PROJECT SERVICES**

**Winchelsea
Local Resident &
Business**

Contact:
Cam McGregor
Production Tree Nursery

Ph: 0437 700 754

Services
offered

Production

- Agricultural/horticultural plantings (natives/exotics) for bulk windbreaks, screenings, driveway features.
- Irrigation - Full service - Commercial/Industrial/Domestic
- Revegetation services - agricultural/roadways/excavation sites/rail/civil
- Drainage Infrastructure - wetlands, matting, fabric
- Consulting
- Maintenance - contract/Ad hoc
- Contract tree/plant growing

**Winchelsea
AUTO
SERVICES**

One stop auto Shop

17 Alsop Drive

- ❖ LOG BOOK SERVICE
- ❖ AUTO ELECTRICAL
- ❖ TOWING
- ❖ AIR CONDITIONING
- ❖ CLUTCH & BRAKES
- ❖ TYRES
- ❖ WHEEL ALIGNMENT
- ❖ BATTERIES

**CAR, TRUCK REPAIRS
& Roadworthys**

PH: 5267 3001

Mob: 0417 137 457



Digital Antennas

Have the professional do the job correctly

- Latest Digital Technology
- New Kingray Boosters
- Fully Equipped Mobile Vans With Qualified Technicians stocked with large range of cables & connectors
- TV Brackets
- Digital TV Antennas with: Heavy duty construction
- Durable plastics for harsh Australian conditions
- Manufactured by our team in Geelong



**WE SERVICE THE BELLARINE,
THE SURFCOAST AND GEELONG**

**SALES &
INSTALLATIONS**

Hi-Gain Antennas P/L
1/21 Leather St, Breakwater
Ph: 5222 2711

Monday – Thursday 7.30am – 4.30pm
Friday 6.30am – 10.30am



Carols by the Barwon

SATURDAY 9TH DECEMBER

5.30pm - 6pm START
LIONS PARK (BELOW BARWON HOTEL)



HINTERLAND ART SCHOOL WINCHELSEA

St Thomas Church Hall
Barwon Terrace, Winchelsea



GUEST
SPEAKERS
from 3pm

OPEN DAY | 2-7pm MONDAY 20 NOVEMBER 2023

Regional Arts Victoria invites you to a **meet and greet** session as part of the **Hinterland Art School Open Day** to meet regional manager, Stacie Bobele.

Stacie is managing the Making Change project, working across the G21 region councils with a specific strategic focus on collaboration and a sustainable creative industry. She'll provide an update on the project, and she'd love to hear your thoughts on how to build a more sustainable creative industry across all subsectors: visual artists, performing artists, musicians, writers, producers and presenters.

For more information about the project, go to wearemakingchange.com.au/
For more information about Hinterland Art School, email hinterlandartschool@gmail.com

HINTERLAND
ART SCHOOL
WINCHELSEA



OPEN DAY | 2-7pm MONDAY 20 NOVEMBER 2023

- Domestic and Commercial hire equipment • Industrial welding gas
- Digging and Earthmoving equipment • New trailers and trailer repairs
- Firewood • Stockists of Royal Oil Lubricants products
- LPG for domestic and commercial requirements

Give Chris and the Team a call on **5232 1177** or email info@colachire.com.au

www.colachire.com.au

101 Wallace St Colac 3250



SIMPLE STORAGE SOLUTIONS

- Personal & Business Storage
- Boat, Caravan & Vehicle Storage
- High Security Premises
- Individually Alarmed Units
- Electric Gate Access
- 7 Day Access & CCTV

YOUR STORAGE PROBLEMS SOLVED

5267 3116

6 ALSOP DRIVE, WINCHELSEA 3241

GREAT Bundle Deal on Bosch

Hot Water... FROM ELGAS
Buy any Bosch Bluetooth
continuous flow hot water model
- 16Litre, 20Litre or 26Litre and
**Receive \$100* in Elgas
bonus LPG gas credits**



*For more details:
www.elgas.com.au/appliances/bosch-optimflow-16-20-26-lpg-bundle-sale

AND... for new customers, an additional

**\$80 WORTH OF
LPG GAS CREDITS****
when you open a new LPG
Gas account with Elgas



**Further details can be viewed at www.elgas.com.au

Ask about the Elgas Easy Payment Plan - 12 months
interest free*** on selected LPG appliances

***Further details can be viewed at: www.elgas.com.au/epp

Automatic tanker gas bottle refill OR gas bottle exchange
refill is available for home or business....

Call today or visit our website for our many customer benefits and latest offers

131 161
www.elgas.com.au

ELGAS





'Reliable equipment matters to me.'

Need new equipment to keep your business growing? Or is your old equipment running out of steam? If so, it's time to talk with a business specialist.

If reliable equipment matters to you, call Julie on 04 6621 7889 or search 'Bendigo Bank Equipment Finance'.

📍 Community Bank · Winchelsea & District 5267 3189



Terms, conditions, fees, charges and lending criteria apply. Bendigo and Adelaide Bank Limited, ABN 11 068 049 178 AFSL / Australian Credit Licence 237879. (1678614-1720176) (03/22) OUT_31643351, 13/09/2023

Funeral Planning

Working out what is best for you.

Prepaid Funerals, Funeral Bonds, Pay-by instalments...

There are many options and its important to make the right choice.

Alyson Burchell will be available by appointment to answer any questions about funerals and planning ahead.



For more information or to make an appointment contact Sue on 5221 4788

Tuckers Community Office,
Surf Coast Taxation Services, 22 Willis Street,
Winchelsea

**First Tuesday of the Month,
by appointment 10.00am - 12.00pm**

Caring for families since 1883

Tuckers
Funeral & Bereavement Service
...for a life worth celebrating

5221 4788
www.tuckers.com.au

HESSE RURAL HEALTH



Acute Care*
Urgent Care*
Residential Aged Care*
Community Nursing
Dietetics
Physiotherapy
Occupational Therapy

Diabetes Education
Social Support Groups
Counselling
Home Care
Health Promotion
* services from Winchelsea only

www.hesseruralhealth.com.au
P: (03) 5267 1200 E: reception@hesse.vic.gov.au

Winchelsea Taxis is now Surfcoast Taxis

Our fleet of vehicles are growing to all late models and we are covering an extended area including Winchelsea, Colac, Bannockburn, Inverleigh, Great Ocean Road and Geelong.

We have a fleet of 10 seater Maxi Vans, all with capacity to carry wheelchairs.

Surfcoast Taxis Pty Ltd
All Bookings: 0408 325 992
Fax: 5267 2699
Email: bannotaxis@gmail.com
(Admin or Stan 0429 672 888)
66A Batson Street
Winchelsea 3241



Accounts NDIS provider. TAC, DVA etc

NDIS provider number 4050001044
NDIS provider number 4050001048

Wightons Lawyers

Dispute Resolution & Litigation

Debt Collection

Property Law

Wills & Estates

Powers of Attorney

Business Law

Family Law

By appointment only

22 Willis Street, Winchelsea
ph. 5221 8777

www.wightons.com.au



WCC Round 5 Results



A-Grade Winchelsea 7/265dec def Surf Coast 68 & 2/79

| | |
|-----------------------|----------------|
| S Murdoch 108 not out | S Murdoch 4/11 |
| B Luppino 49 | R Edwards 2/4 |
| R Ferguson 38 | C Watson 2/15 |
| J Stephenson 18 | L Lenehan 1/5 |
| J Gray 16 | J Gray 1/14 |

Second Innings

G Schreurs 1/12
R Edwards 1/18

Brought to you by



Winchelsea Cricket Club Dinners

When: Thursday 16th November

Where: The Hub - Eastern Reserve

Time: Service starts at 6.30pm



ROUND SIX

SATURDAY 18TH NOVEMBER - 1PM START

**A-GRADE
AT DRYSDALE**

**B-GRADE
AT EASTERN RESERVE**



M&B WOOD PLUMBING

Call Matt - 0418 319 357
mbwoodplumbing.au

Servicing Winchelsea & surrounds

- General maintenance & blocked drains
- Gas fitting & hot water service upgrades
- New homes & renovations

Winchelsea Men's Shed



For The Community

51 Hesse Street

Every Wednesday from 9:30am

New members always welcome

For more detail contact:
Ray Atkinson (Co-ordinator)
0407 839 139

or
winchmensed@gmail.com

Need a job done?
Woodworking jobs,
furniture repairs, small jobs.
Drop in and talk to us.

Mental Health Support/Coaching
Phone Tanya on **0490 340 076**
www.awakenlifecoaching.com.au





Lupton BUILDERS
SPECIALISING IN QUALITY




REGISTERED Building Practitioner

- NEW HOMES
- EXTENSIONS
- RENOVATIONS
- ALTERATIONS
- DECKS
- PERGOLAS
- CARPORTS
- VERANDAHS
- RE-CLADS
- BATHROOMS
- WINDOW REPLACEMENTS

LEIGH LUPTON 0438 840 104 | CHRIS LUPTON 0407 681 514

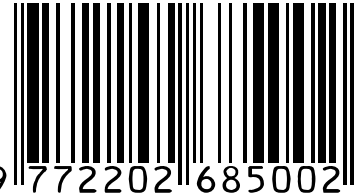
LEIGHLUPTON17@GMAIL.COM Est. 1977

Winchelsea Star

Since 1977



ISSN 2202-6851



9 772202 685002

Chiropractic - Remedial Massage - Myotherapy - Sound Healing - Breathwork

Chiropractic care for:


- Stress & Anxiety
- Body Aches & Tension
- Poor Sleep
- Pain Management
- Family Wellbeing
- Health Longevity




03 5267 2240 Shop 4/21 Hesse St Winchelsea   <https://onebodychiropractic.com.au/>

MGT BUILDING & CONSTRUCTION

NEW HOMES | EXTENSIONS | RENOVATIONS Ph: 0409 433 687



HESSE RURAL HEALTH

Volunteers Required

Volunteers are one of Hesse's greatest assets, playing a vital role to enhance the quality of Hesse services & client experiences.

- Bus Driver
- Outings Assistant
- Resident Visitor
- Events & Activities Assistant
- Group Wheelchair Walkers
- Appointment Escort
- Social Support Activities
- Gardening - Winchelsea
- Hospital Auxiliary Member
- Consumer Advisory Committee
- Marketing & Fundraising Committee



For more information please contact Hesse on (03) 5267 1200 or via email reception@hesse.vic.gov.au

Winchelsea Men's Shed



For The Community
Men's Shed Kindling/Offcuts
 Bags of Kindling/timber offcuts are available for pick up from the Men's Shed on Wednesday's from 9.30 to 2.30.
 If you need a delivery made you can call Bill on 0438 083 373.
 The price for a bag of kindling is now \$7.00 (up from \$5.00).
Nesting Boxes
 Bird or animal nesting boxes are available from The Men's Shed. These can be made to order. Call in on any Wednesday to have a chat.

