

# Our Concepts



A comprehensive overview of our various concepts and their benefits. Explore the details of each concept to better understand how they can enhance your operations.

Test Concept

ICOS

AWH

LED-Light Safety

SPARK

Scanner Portal

Internal  
Marketing

# Test Concept



## Key Benefits



### Flexibility

Test how our solutions adapt to varying operational demands, from different environments to fluctuating load conditions.



### Seamless Implementation

Our test concept is designed for easy integration into your existing operations, ensuring a smooth and hassle-free setup.



### Minimal Disruptions

With a structured and efficient approach, the test phase causes minimal interference with daily workflows.



### Insights into Value Creation

The test process provides insights into where automation delivers the most impact for your specific operations.



## Tailored Solutions for Your Business Needs

We recognize the importance of ensuring that cutting-edge robotic solutions align with your specific operational requirements. That is why we have developed our adaptable, client-centered Test Concept. This initiative allows you to experience advanced automation technology directly within your facility, ensuring its potential benefits can be evaluated firsthand.

Our Test Concept offers a unique opportunity to see the capabilities of our Agilox solutions in real conditions. This hands-on approach allows you to make informed decisions based on practical insights, showcasing the impact our robotic solutions can have on streamlining workflows, optimizing internal logistics, and enhancing production efficiency.

## Full Support Throughout the Test Period

During the test period, our expert team will provide full support, including on-site setup and configuration, fine-tuning of robot operations, and training for your team.

We will also collect performance data for analytics. At the end of the trial, you will receive detailed feedback and actionable insights to help you make an informed decision about how our solutions can improve your operations.

Ready to see how our solutions can transform your operations? Contact us today and experience the benefits firsthand.

[Learn More on Our Website](#)

# Internal Marketing



## Key Benefits

### Elevate Your Brand Identity



A branded AMR serves as a mobile, visible representation of your company. Moving throughout the workplace, it acts as an ongoing advertisement for your business, keeping your values and vision visible to both employees and visitors.

### Enhance Employee Engagement



When employees witness their workplace reflect professionalism and creativity, it strengthens their sense of pride and connection to the company. A branded AMR fosters a shared symbol of culture and values, boosting collaboration and community.

### Leave a Lasting Impression



For visitors, clients, and partners, a branded AMR demonstrates attention to detail, innovation, and modernity. It is not just a functional tool, it is a strategic asset that highlights your company's commitment to both aesthetics and performance.

## Custom Wrapping for AMRs

Take your brand presence to the next level with custom wrapping for your AMRs. This concept offers a unique opportunity to transform your automated fleet into a visually impactful and cohesive part of your company's identity.

Custom wrapping is not just about enhancing the look of your AMRs, it is a strategic internal marketing tool that boosts employee engagement, promotes your company culture, and impresses visitors and stakeholders.

## AMRs as Brand Ambassadors

With custom wrapping, you can ensure that your AMRs reflect your brand's values and vision. Whether it is through logos, corporate colors, or other design elements, the wrapping can be fully personalized to represent your company in a professional and eye-catching way.

As your AMRs move through production areas, warehouses, or other facilities, they become constant, moving representations of your company's identity.

Ready to see how our solutions can transform your operations? Contact us today and experience the benefits firsthand.

[Learn More on Our Website](#)

# ICOS



## Key Features and Specifications

	<b>Max Lift Weight</b>	750 kg/unit
	<b>Max Lift Height</b>	40 mm
	<b>Height</b>	315 mm
	<b>Length</b>	810 mm
	<b>Weight</b>	40 kg/unit
	<b>Surface</b>	Powder coating

## In Case Of Stop

Stops and interruptions can occur in daily operations. That is why we developed the ICOS, a mobile hydraulic lift trolley designed to safeguard your production continuity in case of an unexpected stop of the Agilox ONE.

The ICOS is more than just an emergency tool, it represents SCANLOX's commitment to resilience, innovation, and responsiveness in automation. With its fast and simple deployment, the ICOS provides a seamless solution in critical moments, acting as a safeguard against downtime, minimizing disruption to your operation, and keeping your workflow on track.

## Prepared for the Unexpected

When the unexpected happens, the ICOS steps in to support your operations. This tool is designed for both strength and versatility.

Its two mobile units (left and right) work in tandem with a transport bracket and a multifunctional crossbar. The crossbar not only serves as a stabilizer but also acts as a convenient handle for ease of use. This design ensures that the ICOS is as functional as it is reliable.

Ready to see how our solutions can transform your operations? Contact us today and experience the benefits firsthand.

[Learn More on Our Website](#)

# Pallet Storage



## Key Benefits



### Delivered with the AGV interface with I/O signals

This allows seamless communication between the pallet magazine and mobile robots, ensuring smooth data exchange and efficient operation.



### Compatible with all types of driverless forklift trucks

The system is versatile and can be integrated with various automated forklift models, enhancing flexibility in automated operations.



### Comes pre-installed with software

The pre-configured software simplifies the setup process, allowing for quick installation and minimal downtime.



### Offered as a 100% electric solution

The environmentally friendly solution reduces energy consumption and contributes to sustainability by operating entirely on electric power.

## Pallet Magazine for Automated Handling

The PALOMAT AGV Pallet Magazine allows fully automated stacking and destacking of empty pallets directly at floor level. It is designed for seamless integration with AMR and AGV, ensuring a steady and reliable pallet flow throughout production, packaging, and warehouse operations.

Whether the task involves wooden, plastic, or metal pallets, the system offers flexibility by supporting all four-way pallets and can be customized to fit specific pallet sizes.

## Reliable Communication and Operation

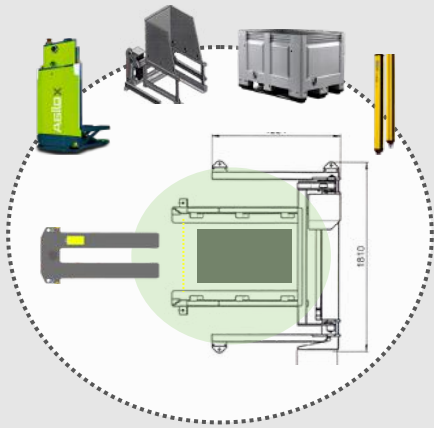
With built-in communication capabilities, the system features a dedicated interface and pre-installed software that enable direct interaction with mobile robot systems. A 24VDC I/O signal interface allows simple and efficient data exchange between the pallet magazine and the mobile units.

This solution helps maintain reliable operations, ensures precise docking, and reduces the need for manual handling.

Ready to see how our solutions can transform your operations? Contact us today and experience the benefits firsthand.

[Learn More on Our Website](#)

# Automated Waste Handling (AWH)



## Revolutionizing Waste Handling

Efficient waste management is essential for balancing productivity, safety, and sustainability. Our Automated Waste Handling Concept redefines waste management by introducing a cutting-edge solution that combines advanced technology with seamless functionality to meet modern operational needs.

## How AWH Optimizes Operations

The AWH system is centered around the innovative use of the Agilox ONE, which transports pallet boxes instead of traditional waste containers. This shift not only streamlines workflows but also reduces waste and optimizes storage space.

Designed for effortless integration, the system supports both automated and manual operations, offering a flexible solution tailored to diverse production environments.

With fully automated functionality powered by PLC communication, the AWH system minimizes manual intervention. However, for operational adaptability, the system can easily switch to manual mode when needed, ensuring uninterrupted performance regardless of changing requirements.

## Key Benefits



### Improved Workplace Safety

With advanced safety features like light curtains and AI cameras, employees are protected from potential hazards, creating a safer and more reliable work environment.



### Enhanced Efficiency

Automation significantly reduces process time, minimizes errors, and ensures smoother operations. This allows businesses to allocate resources to other critical tasks, boosting overall productivity.



### Operational Flexibility

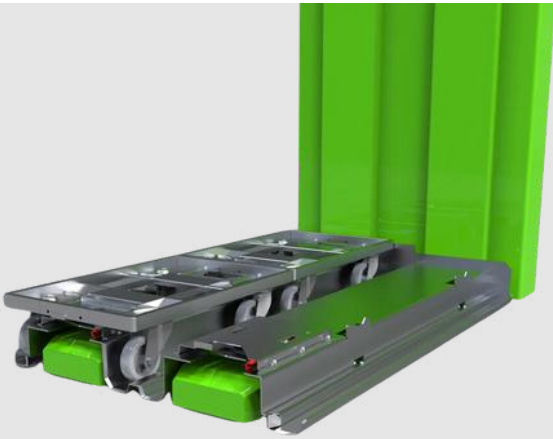
The dual-mode functionality—automated and manual—ensures seamless adaptation to various industries and production environments. This flexibility guarantees consistent performance regardless of specific operational needs.

Ready to see how our solutions can transform your operations? Contact us today and experience the benefits firsthand.

[Learn More on Our Website](#)



# Adapter Pallet for Dollies



## Optimizing Dolly Transport

Transporting multiple dollies simultaneously can significantly improve efficiency in logistics and production environments. The Adapter Pallet for Dollies, developed in collaboration with FATH Western Europe, enables the Agilox ONE to handle multiple dollies at once, optimizing the transport process and improving workflow efficiency.

## Key Features and Benefits

### Flexible Compatibility

Fits 400 mm dollies and supports two 800x600 mm or one 1200x800 mm dolly, compatible with existing transport systems.

### Automatic Locking

Secures dollies when lifted by Agilox ONE, ensuring stability. Releases only when the foot pedal is activated.

### High-Bay Storage

Allows easy placement in high-bay racks, maximizing vertical storage and reducing floor congestion.

### Conveyor Integration

Works with manual and automated roller conveyors for smooth transport.



Pallet Adapter  
with Dollies



Pallet Adapter



Dolley



Ready to see how our solutions can transform your operations? Contact us today and experience the benefits firsthand.

[Learn More on Our Website](#)

# LED-Light Safety



## Key Benefits



### Enhanced Safety

Clear visual indicators reduce the risk of accidents and improve communication.



### Operational Efficiency

Automated responses to equipment movement optimize workflows.



### Flexibility

Responsible lights and customizable lenses adapt to a wide range of needs.



### Energy Savings

Intelligent controls minimize power usage during non-peak hours.



### Broad Adaptability

Adaptable to wide range of industrial and warehouse facilities.



### Indoor & Outdoor

The projectors is IP65 certified.

## Enhancing Safety and Efficiency

We prioritize safety and operational efficiency in industrial and warehouse environments. Our advanced LED-Light Safety Concept is a solution designed to improve visibility, streamline workflows, and reduce energy consumption while adapting to the unique needs of your facility.

## Innovative Lighting

The concept uses high-performance projectors to display clear visual signals, such as warnings, safety zones, pedestrian crossings, and directional guides, onto the floors, walls, or ceilings. These projections improve communication in busy facilities, minimizing accidents and ensuring smooth operations.

## Customizable Lens Options & PLC Control

The system's versatility means it can be customized to project almost any pattern, symbol, or operational indicator required. Whether you require safety zones, directional guides, or unique operational markers, the possibilities are virtually limitless. This customization ensures that the system not only enhances safety but also adapts seamlessly to your workflows.

Seamlessly integrated with a PLC control box, the lighting system communicates in real-time with equipment such as forklifts, AMRs, and AGVs equipped with tags.

Ready to see how our solutions can transform your operations? Contact us today and experience the benefits firsthand.

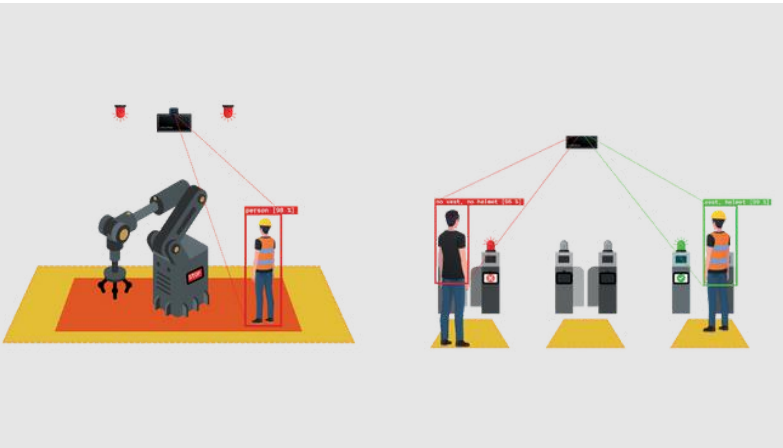
[Learn More on Our Website](#)

[See Our Booklet](#)





# SPARK Concept



## Key Benefits



### Customizable Safety Zones and Actions

Easily configure detection areas and alerts for tailored protection.



### Advanced AI and Image Recognition

Enables precise identification of objects and individuals.



### Reliable Communication

Utilizes LoRa and UWB technology for seamless data transmission.



### Multi-Channel Alerts

Sends instant notifications via SMS, email, and audio-visual alarms.



### Night-Time Safety

Equipped with infrared night vision for continuous monitoring in low-light conditions.



### Versatile Integration

Supports up to four cameras and integrates with existing safety protocols.

## Enhancing Workplace Safety

The Smart Pedestrian Anti-Collision Recognition Kit (SPARK) is revolutionizing workplace safety with its intelligent and customizable approach to accident prevention. Designed for industrial facilities, warehouses, and other high-risk environments, SPARK provides real-time detection and rapid response, ensuring the safety of both personnel and assets.

## Adaptive and Customizable

One of SPARK's greatest strengths is its adaptability. Users can easily define detection zones, identify specific objects or individuals, and configure alerts and safety actions to match their operational needs. This flexibility makes it an invaluable tool for improving workplace safety across various industries.

## Applications of SPARK

SPARK's applications extend across multiple safety-critical areas. It prevents accidents by monitoring access, enforcing PPE compliance, and tracking occupancy in sensitive zones. It enhances on-site safety by detecting individuals approaching hazardous areas, equipment, or moving machinery such as forklifts and cranes. In emergencies, SPARK instantly detects incidents like collisions or medical emergencies and alerts the appropriate personnel, ensuring a rapid and effective response.

Ready to see how our solutions can transform your operations? Contact us today and experience the benefits firsthand.

[Learn More on Our Website](#)

# Customized Solutions



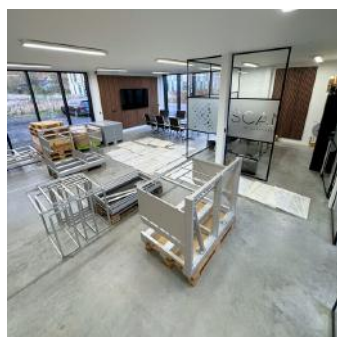
## Tailored Solutions

Every business is unique, and so are the challenges it faces. We provide customized solutions that are designed to meet the specific challenges and objectives of your business. We develop customized solutions with a focus on AGV or AMR automation. This includes tools or materials designed to complement mobile automation.

## Customized Solution Example

A leading pharmaceutical company in Denmark needed a more efficient way to transport tools to the production area. Their existing solution was neither durable nor ergonomic.

In close collaboration, we developed two custom racks designed to be transported by an AGILOX ONE. The solution reduced manual handling and improved safety during transport, resulting in smoother workflows and higher productivity.



Ready to see how our solutions can transform your operations? Contact us today and experience the benefits firsthand.

[Learn More on Our Website](#)

# Scanner Portal



## Key Benefits



### Speed and Reliability

Handles high volumes with minimal error, reducing bottlenecks and improving throughput



### Seamless Integration

Easily integrates with robotics and warehouse management systems for uninterrupted workflows.



### Cost Efficiency

Reduces manual intervention, saving time and labor costs while improving operational precision.



### Scalability

Adaptable to growing business demands, making it a future-proof investment.

## Advanced Scanning for Smarter Logistics

We combine cutting-edge scanning technology with advanced robotics to deliver a seamless solution for pallet handling.

Our Scanner Portal Concept revolutionizes logistics by enhancing efficiency, accuracy, and operational flow, particularly when integrated with AMR and AGV technologies.

Also applicable for dynamic conveyor systems.

## Precision Scanning

The Scanner Portal features Cognex A1000 3D cameras, advanced scanning technology for unmatched precision.

The concept is versatile and highly effective across various industries. In retail, it enables the management of high volumes of goods on pallets with fast and accurate scanning in distribution centers. For manufacturing, the system enhances production and warehouse efficiency by ensuring precise pallet tracking and seamless automation. In logistics, it streamlines loading and unloading processes through the integration of advanced scanning technology with automated vehicles, ensuring quick and reliable operations.

Ready to see how our solutions can transform your operations? Contact us today and experience the benefits firsthand.

[Learn More on Our Website](#)