

WORK PORTFOLIO

A KALEIDOSCOPE OF
SUCCESS STORIES.



MARKETING
AGENCY

StratDigi
SOLUTIONS DRIVEN

StratDigi
SOLUTIONS DRIVEN

www.stratdigi.co.za

StratDigi

StratDigi

EXPOS & EVENTS

BECAUSE WE'RE EXHIBITIONISTS, BY NATURE



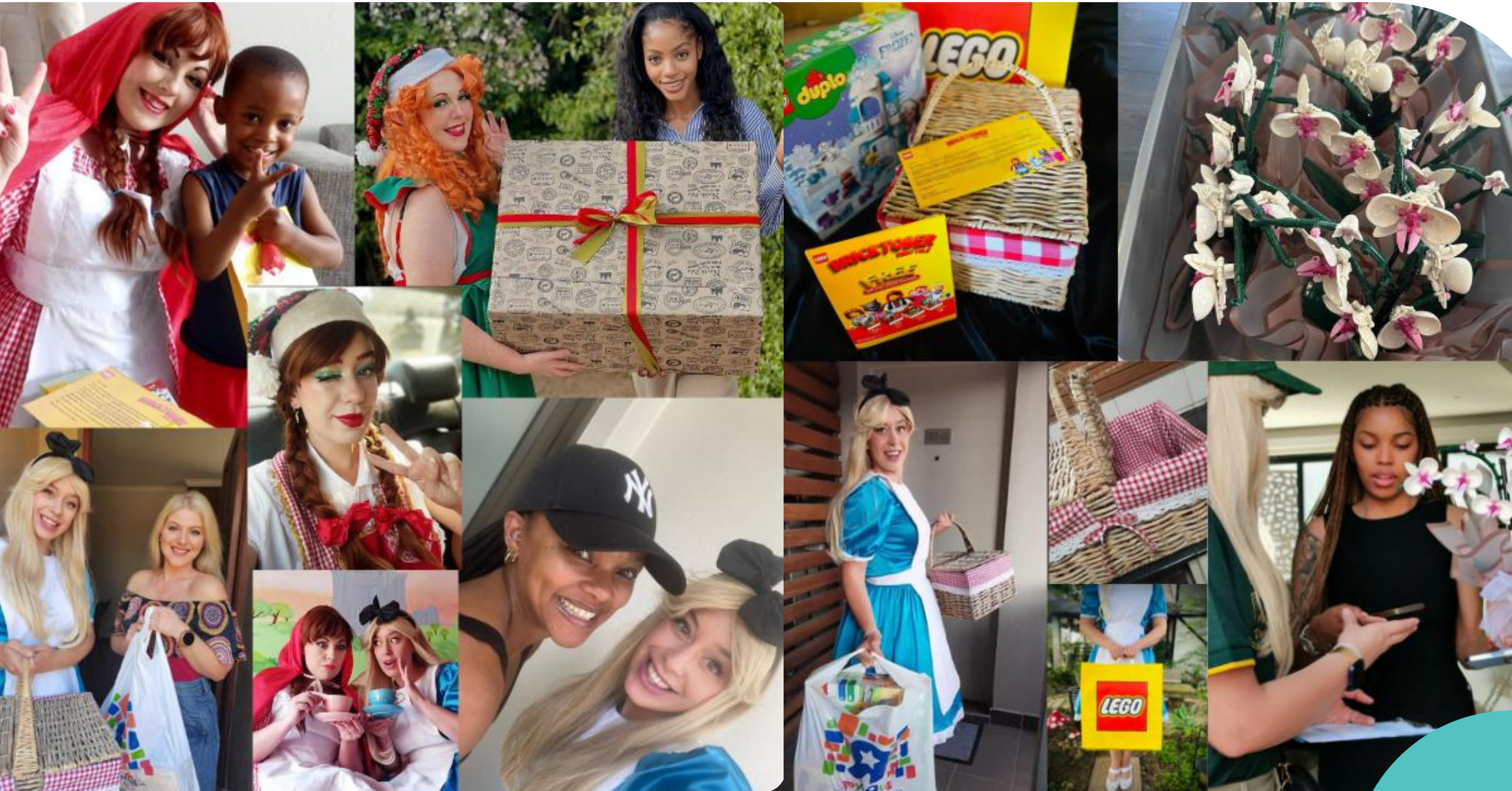
ACTIVATIONS

THREE WORDS: FUEL, IGNITE AND ACCELERATE.



INFLUENCER DROPS

WHERE BRAND EXPOSURE, MEETS BRAND LOVE.



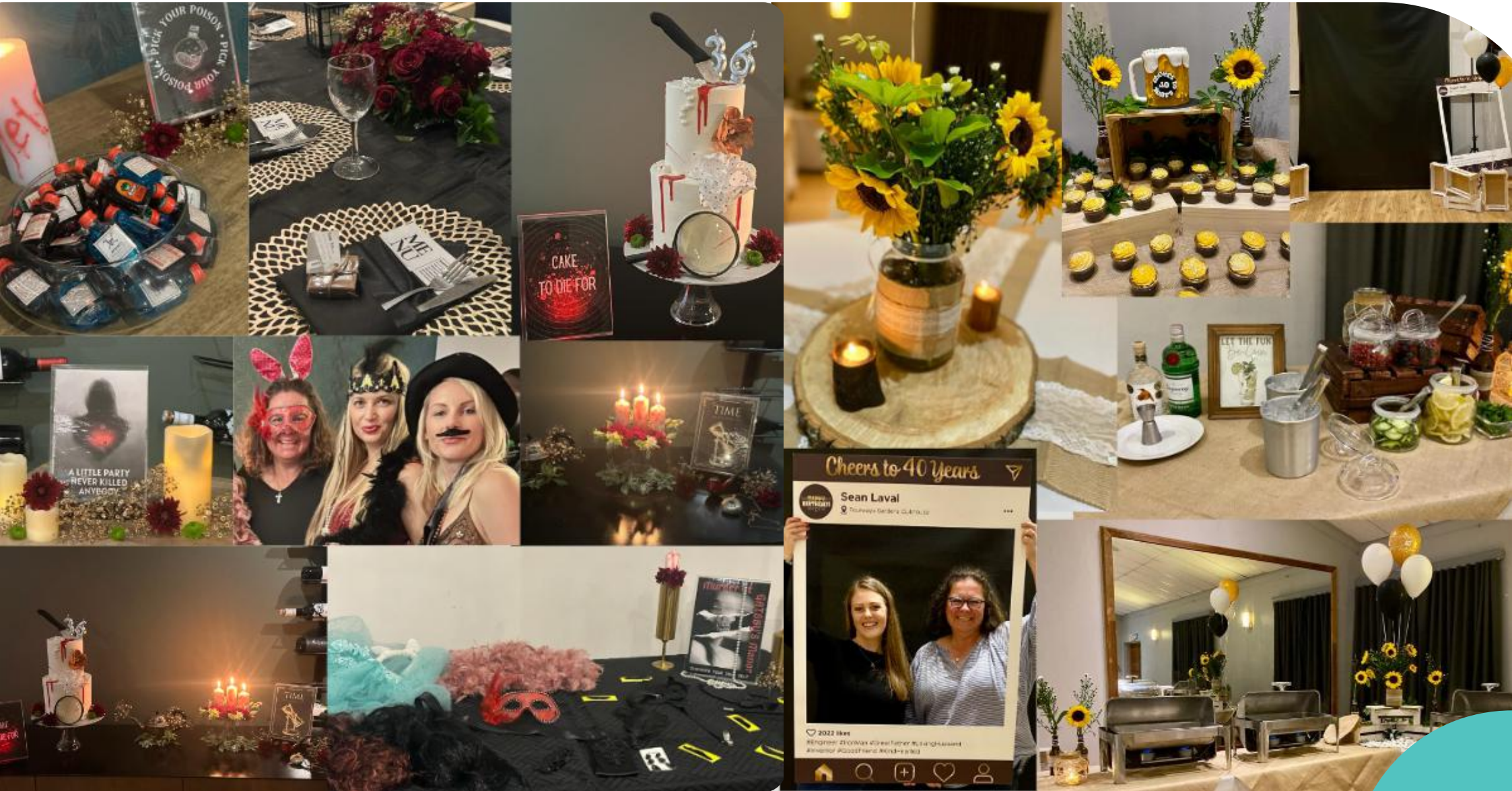
PR EVENTS

WE ORGANISE IT ALL.



PRIVATE EVENTS

DELIVERING EXTRAORDINARY EVENTS.



CSR EVENTS

EMBRACE CSR... FOR A BETTER TOMORROW!



ILLUMINATE YOUR LAUNCH

UNVEIL EXCELLENCE WITH A PRODUCT DEBUT TO REMEMBER.



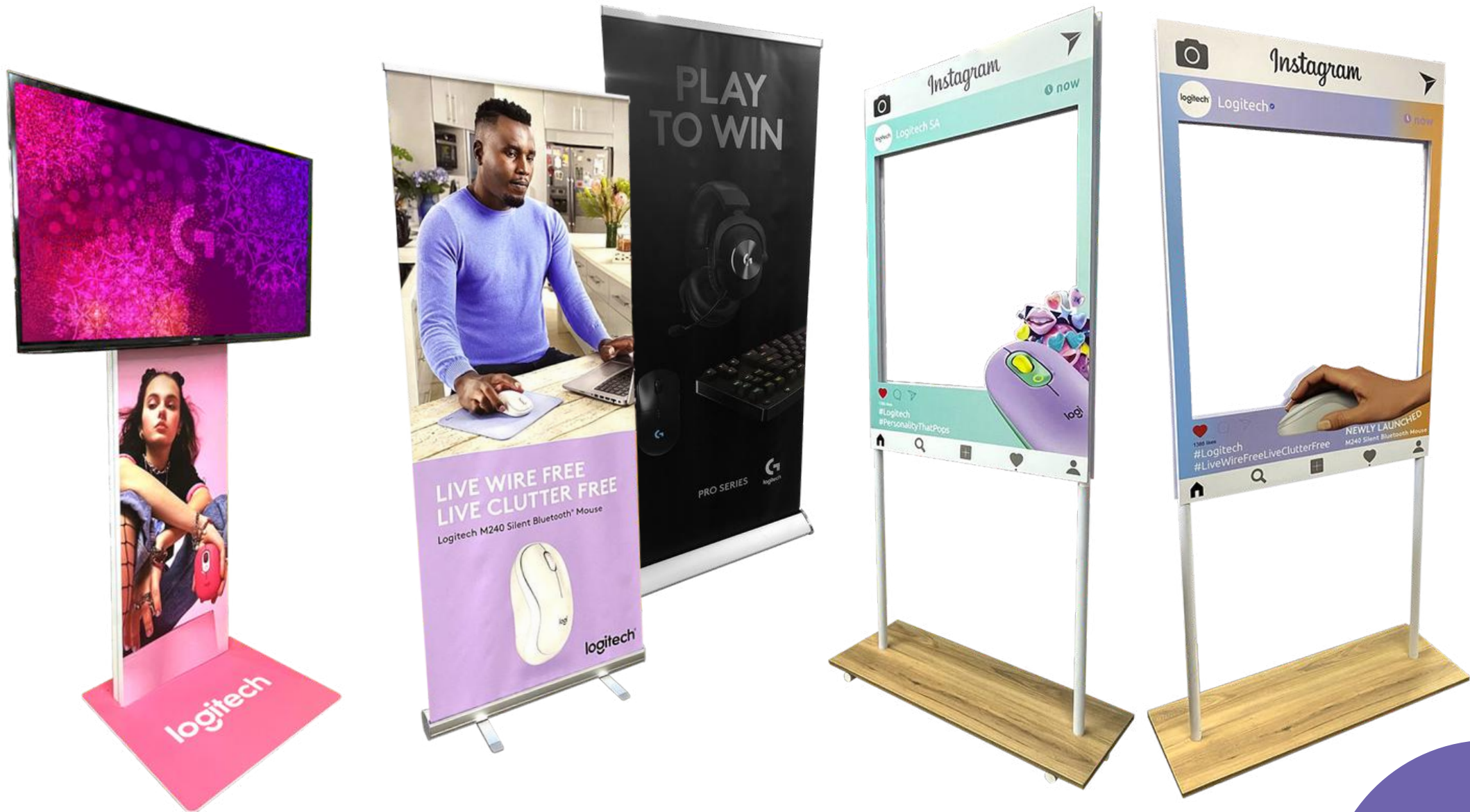
CONFERENCING & WORKSHOPS

A FORUM TO IGNITE THE RIGHT CONVERSATIONS



EVENTS ADD-ONS

AMPLIFY YOUR EVENT EXPERIENCE



CORPORATE GIFTING

EVERY GIFT SPEAKS VOLUMES.



RETAIL POINT OF SALE UNITS

THE HEARTBEAT OF YOUR COMPANY



RETAIL POINT OF SALE UNITS

EMPOWERING RETAIL EXCELLENCE



RETAIL INSTALLATIONS

BOOST YOUR BUSINESS PRESENCE



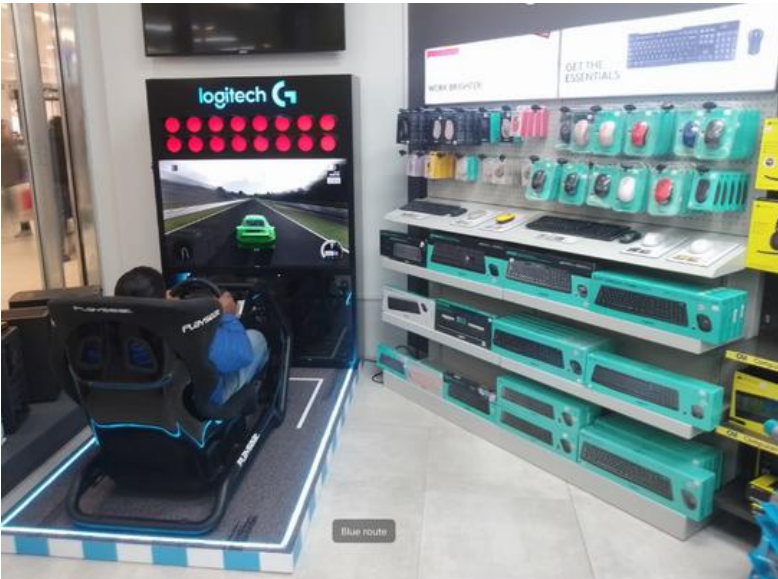
RETAIL INSTALLATIONS

TRANSFORMING RETAIL DYNAMICS



RETAIL INSTALLATIONS

ELEVATED CUSTOMER EXPERIENCE



PORTABLE BRANDED COUNTERS

SHOWCASE YOUR BRAND IN STYLE



AFRICA RETAIL SUPPORT

POINT OF SALE - SUPPORTING ALL MARKETS



AFRICA RETAIL SUPPORT

POINT OF SALE - SUPPORTING ALL MARKETS



AFRICA RETAIL SUPPORT

POINT OF SALE - SUPPORTING ALL MARKETS



AFRICA RETAIL SUPPORT

POINT OF SALE - SUPPORTING ALL MARKETS



BROCHURE DESIGNS

WHERE IMAGINATION MEETS VISUAL EXCELLENCE.

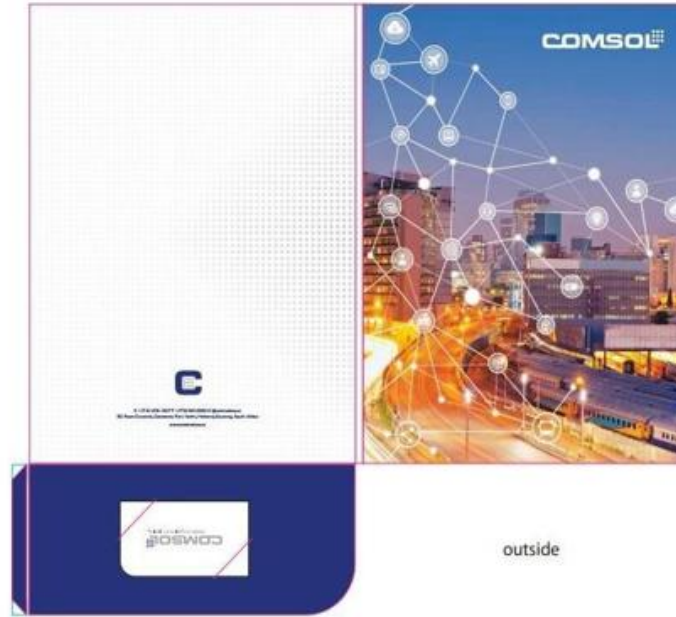


BROCHURE DESIGN

EMPOWERING YOU WITH CHOICES.



outside



outside

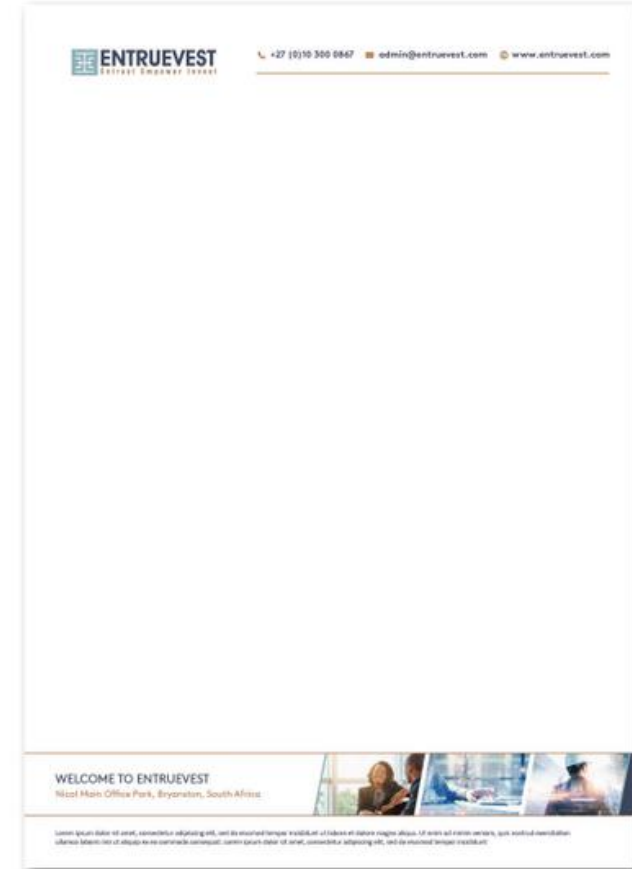
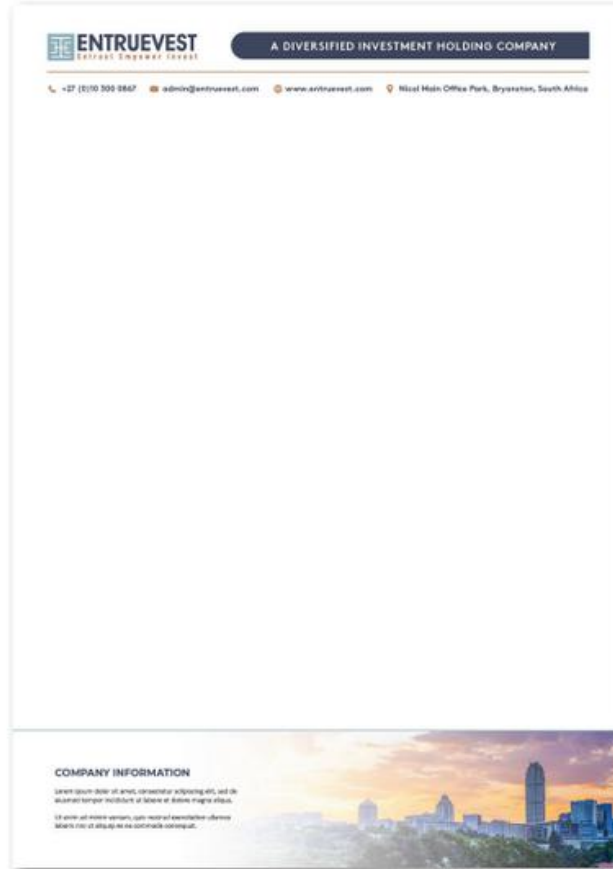
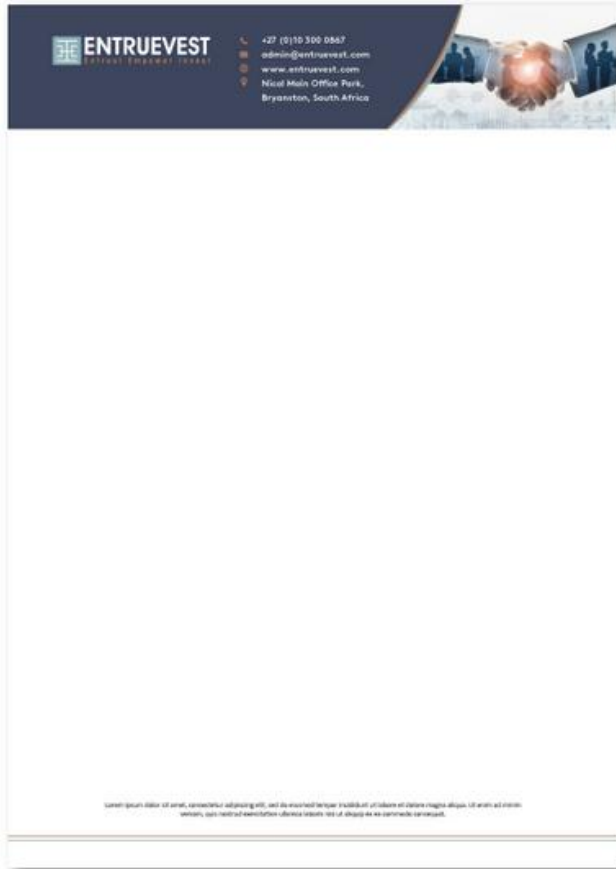
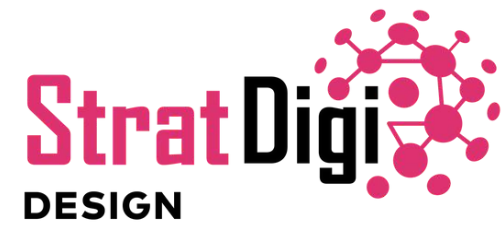


outside



LETTERHEAD DESIGN

DESIGNS THAT BEST SPEAK TO YOUR BUSINESS.



INTRIGUING ADVERTORIALS

CRAFTING UNFORGETTABLE NARRATIVES.



COMSOL NETWORKS

TRANSFORMING WIRELESS CONNECTIVITY IN SOUTH AFRICA

Fibre is often touted as the premium technology to enable connectivity in the information age, but modern wireless networks offer comparative performance with a host of benefits, and should not be overlooked.

One can hardly drive a kilometre in the major cities without noticing a myriad of organisations frantically laying optical fibre in a land grab initiative last seen during the Gold Rush. You would therefore be forgiven in thinking that this presents a silver bullet approach to solving all of businesses' connectivity challenges.

The reality is that the right wireless solution can provide highly reliable access, offering fibre-equivalent speeds and quality-of-service. Installation of wireless infrastructure involves significantly less bureaucratic processes, like applying for way leaves and municipal approvals and then the associated delays in trenching etc., resulting in exponentially faster installation times. Considering the remote locations of many branch offices and rural industries requiring connectivity around South Africa, wireless is often a more feasible alternative to rolling out extensive fibre infrastructure. The story is no different for many businesses in the heart of metropolitan areas, who have been overlooked by fibre providers due to logistical or economic constraints.

Comsol Networks has recently completed the phase 1 rollout of its network, Comsol Connect, to over 200 South African metropolitan areas and towns*, creating a business grade foundation for you to connect, anywhere, any time. Comsol Connect is South Africa's first, truly nationwide layer 2 open-access wireless network providing dedicated high speed connectivity. Utilising the most advanced wireless technology in dedicated licensed frequency spectrum ensures the quality of service of any carrier-grade network.

Organisations such as telecommunications operators, internet service providers (ISPs), system integrators and individual businesses can leverage off the Comsol Connect network to

access uninterrupted data speeds from 2Mbps to 1Gbps, in just six working days**. Companies who already benefit from fibre and are in need of higher reliability should consider adopting a dual-medium (fibre and wireless) approach to their connectivity. Such an approach addresses single points of failure in both the physical and wireless domains. Each connectivity medium can be serviced by a different service provider simultaneously, creating a truly redundant network that practically eliminates the risk of down time, and guarantees 99.999% service availability. Such redundancy was traditionally reserved only for the most critical of industries and applications but in today's digital age of migrating to the cloud servicing all their converged services (Data, VoIP, Video etc.), very few organisations can afford to be disconnected from the umbilical cord of business productivity for any length of time.

Already, Comsol Networks provides extensive coverage in all major metropolitan areas, cities, and towns. Furthermore, it is continually connecting towns across the country that will see all South Africans being able to have access to fast and reliable wireless connectivity.

Comsol Networks specialises in building the connected world of tomorrow based on two complimentary pillars - dedicated high speed and low power wireless connectivity.

* - Coverage dependent ** - Coverage dependent / >1000hrs



Email: info@comsol.co.za | Web: www.comsol.co.za



Why choose to wait for lengthy fibre deployments...

... when you can have Speedy, Simple & Equivalent Business Grade Services?



*Guaranteed delivery of 2 – 100 Mbps uncontended services delivered within 6 working days after ordering. Available in more than 200 metropolitan areas in South Africa.



Equivalent Service Level Agreements (SLAs) to fibre – MEF 2.0 Compliant – Best network performance for Voice, Video and Data services



Ideal Solution to support your business services and cloud strategy when you only have a single fibre connection

Choose a Licensed Comsol Connect Wireless Solution Today!

Available through Telco's, Service Providers and Systems Integrators.

+27 (0) 10 140 8800 | info@comsol.co.za | www.comsol.co.za



TURN TO WIRELESS

FOR FAST, RELIABLE INTERNET CONNECTIVITY

Mention high-speed internet connectivity and chances are your thoughts turn to fibre. This is hardly surprising. It has been touted as a key technology for access to the information age.

As far back as 2015, the incumbent stated that it plans to have 50 million homes covered by its fibre network by the end of 2018. You would be forgiven in thinking that this presents users with a silver bullet approach to solving challenges around internet access.

And yet, wireless connectivity should not be overlooked. Not only is it competitive from a speed perspective, it also provides more reliable access with less down time. Installation does not involve trenching or intrusive infrastructure to be rolled out. Given the remote locations of many branch offices and rural industries requiring connectivity around South Africa, wireless is a more feasible alternative to rolling out additional cabling.

Critical Industries (e.g. Security, Medical, Finance) that are already connected through fibre should consider investing in a dual fibre-wireless solution, to mitigate their risk and guarantee 0% down time. In the event that connectivity is lost, issues involving wireless links can generally be diagnosed and repaired faster than that of fibre infrastructure.

Already, Google is using a combination of fibre and wireless to provide users with high-speed internet access [1]. This often takes the form of laying fibre and using wireless for 'last mile' connectivity. More recently though, the company is considering going the wireless-only route, as traditional fibre networks are more expensive and time-consuming to install.

In fact, Google Fibre relies on wireless technology in several major cities including Los Angeles, Chicago, and Dallas. Instead of traditional fibre-optic cables to provide high-speed access, no longer does one need to compromise on speed, as businesses can be linked via an uncontended high-throughput (>100Mbps) carrier grade data network, provided by Comsol Networks.

The technology merits serious consideration as a primary vehicle for fast, reliable, and always-on internet/VoIP. While some might feel that wireless is unproven, the reality is significantly different. Technology has evolved to the extent that wireless is a serious tool for enhancing communications, especially for businesses in underserved areas.

For its part, Comsol Networks provides extensive coverage in all major metropolitan areas, cities, and district councils. Furthermore, it is continually connecting towns and cities across the country that will see all South Africans being able

Comsol Networks specialises in building customised, multi-tenant, wireless access infrastructure for companies, irrespective of industry.

For more information, and to get connected:
Email: info@comsol.co.za
Web: www.comsol.co.za

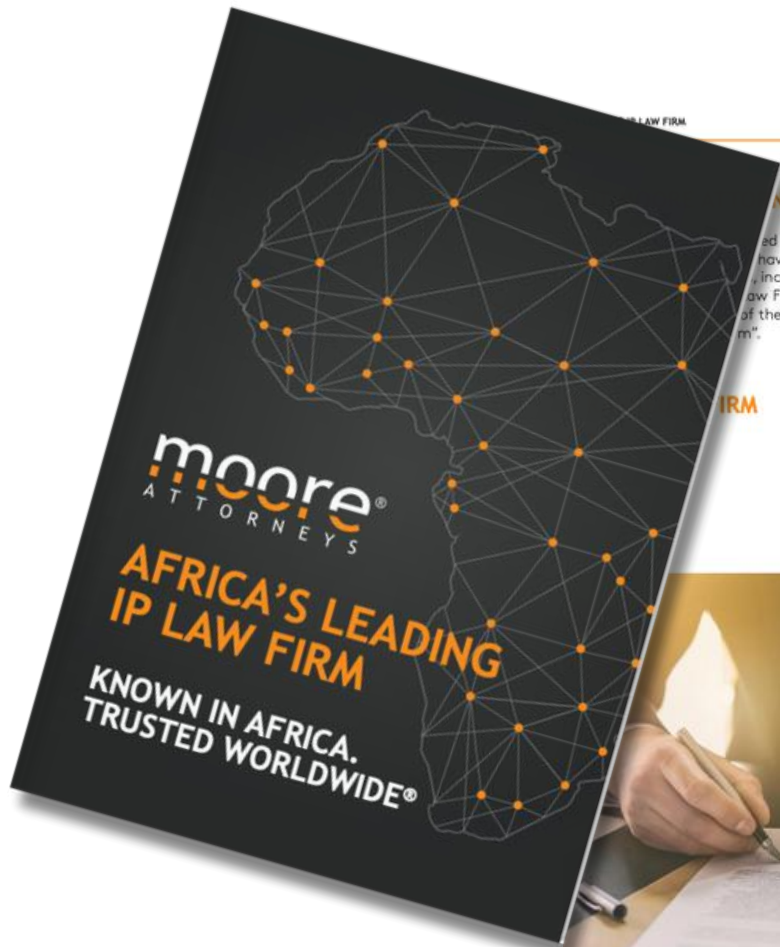
LEAFLET DESIGN

PIXEL PERFECT DESIGNS.



PROFILES THAT CAPTIVATE

CRAFTING COMPELLING NARRATIVES.



AFRICA'S LEADING IP LAW FIRM

KEYS

ed as the
have won
including
aw Firm of
of the Year"
m".

We are a team of highly experienced and award-winning professionals who deliver an out-of-the-box, no-nonsense and pragmatic approach to IP law. Simply put, we do not overcomplicate matters, but find and deliver solutions.

IRM

- Managing Intellectual Property
- World Trademark Review
- Chambers & Partners
- Legal 500
- IAM Patent 1000



KNOWN IN AFRICA. TRUSTED WORLDWIDE®

AFRICA'S LEADING IP LAW FIRM

OUR INTERNATIONAL PRESENCE



KNOWN IN AFRICA. TRUSTED WORLDWIDE®

ENGAGING PROFILES

CRAFTING STORIES THAT LEAVE A LASTING IMPRESSION.



Turning data into insight through people-centred market research

CONCEPT TESTING

Concept testing is necessary when a new product idea is being developed. Many new ideas are generated by consumers and small companies and generally have high potential due to a lack of market competition. Ideas can also be generated by consumers too, but a more structured approach is to get consumer response to concepts and input to further develop. The power of concept testing lies in the manufacturers to test an "idea" as opposed to a product or prototype, before going to the development/manufacturing.

A concept test typically covers the following questions:

- 1. The Uniqueness of the Product Idea
- 2. Suggestions for Improvement
- 3. Likes and Dislikes About the Product
- 4. Likelihood to Try (With or Without a Price Attached)

PRODUCT TESTING

Product testing is the ideal way to identify the strengths and weaknesses of your products' performance. This is done versus the competition or any action standard identified before a test.

Whether you are testing a new or existing product, you have probably been conflicted on which testing method to choose. As in most research ventures, the optimal solution will vary depending on the number of products, type of products you are testing, the budget and the research objectives.

PRODUCT BENCHMARKING

One of the most powerful pieces of research clients can do, is to benchmark their product against the competition to establish superiority in terms of delivery and performance. In the South African market, we often see products that outperform market leaders, but their manufacturers seldom capitalise on this advantage. A superior product performance deserves premium pricing and packaging to ensure larger margins for the manufacturer.

Speak to us to design the correct survey to meet with your specific market research needs, to suit your product category.

Product Benchmarking can play a helpful role in analysing business performance.

- Gain an independent perspective
- Drill down into performance gaps
- Develop a standardised set of processes and metrics
- Enable a mindset and culture of continuous improvement
- Gain strategic advantage and valuable information
- Helps to understand what makes a company successful
- Set performance expectations
- Monitor company performance and manage change

OUR VALUES

- Our mission is to use a focused and resourceful research approach to enable our clients to achieve their goals, reduce costs and minimise risk based on accurate data.
- We utilise a focused and resourceful research approach to enable our clients to make effective and successful marketing decisions in a highly competitive market.

Turning data into insight through people-centred market research

HOME-USE TESTING

Establish how customers use your products in the comfort of their own homes.

Once all testing has been done, it is always best to conduct a home-use test to ensure that when consumers use the product at home, they are still satisfied with its overall performance. These tests are usually conducted monodically, as this is the most common way in which consumers use products.

In some instances, the only way to test a product is by conducting Home-Use tests, as this is the only way to truly test the performance of a product, for example, dishwashing liquids or other homecare items.

Benefits of home-use testing

- 1. The testing of products takes place in natural conditions (at home).
- 2. The opinion of the whole family can influence the perception of the product.
- 3. In-home testing can be used to test sensitive categories like personal care products, kids' products etc.

FMCG PACKAGING EVALUATION

When the decision has been made to change packaging designs, the consumer's input must be gained from very early stages.

These initial stages of research must identify the elements that consumers absolutely cannot go without seeing on a product, for instance, what are the recognition triggers of the brand e.g. Chappie the cheetah on Chappies.

Our questions are structured to gather not only if the consumer likes the packaging, but also what they feel the packaging is communicating about the brand.

The research design at this stage should include aspects such as:

- 1. Ability to catch attention/Recognition triggers
- 2. The likelihood of consumers buying the product in the new packaging design.
- 3. Uniqueness
- 4. The extent to which the packaging design is in line with the overall brand positioning

EYE TRACKING

Keep your eyes on the prize and find out whether your packaging attracts customers.

The eye-tracker can produce a "heat map" which clearly indicates the areas that consumers focus on and what they do not notice. The general rule is to keep the packaging as simple as possible. Experience has shown that busy, cluttered packaging designs can lead to confusion and less understanding of exactly what a brand stands for. Therefore, eye-tracking can assist in making packaging cleaner and less cluttered.

Product Benchmarking can play a helpful role in analysing business performance.

- Reveals subconscious behaviour that is very useful in data collection
- Provides unbiased, objective, and quantifiable data
- Provides a high level of detail
- It is explanatory and can depict processes and actions that are difficult to articulate or explain
- Allows for natural behaviour as the research method is unobtrusive

OUR VALUES

- Market Instinct believes in a high level of personal involvement in our projects. Our team adopts a hands-on approach to all projects, with flexibility and a willingness to see it through to the end. We are accessible and responsive from the initial consult to project completion.

CAPTIVATING PROFILES

WEAVING STORIES THAT RESONATE.



SERVICES OFFERED

INTERIOR DESIGN

For optimum space functionality, look & feel, balance & flow and bespoke items.

- Full investigative site survey
- Concept design
- Preliminary layouts
- 3D Rendering
- Preparation of full working drawings
- Kitchen Design and layouts
- Lighting Design and layouts
- Preparation of drawings for council submissions
- Shop fitting and interior design details, including manufacturing drawings
- Compilation of standard specifications for shop development

COST ESTIMATION

For optimum feasibility

- Initial budget and costing in BOQ Format
- Preparation of tender documents
- Adjudication of tender documents
- Continual on site construction management and valuation of work done for progress payments
- Cost control
- Budget reconciliation
- Preparation of final accounts

SERVICES OFFERED

PROJECT MANAGEMENT

For optimum communication, quality control and flexibility

- Drawing up of a critical path for the project duration
- Awarding of contracts to approved suppliers in consultation with Client
- Establish procurement procedures
- Ensure all health and safety standards are met
- Regular site visits to ensure the project stays on track and within budget
- Weekly site meetings and comprehensive site meeting minutes and progress reports
- Address discrepancies / changes timeously
- Drawing up and execution of the snag list after project completion
- Hand-over the completed scope of work to the client

SPECIALIZED SERVICES

- Extraction systems
- Bulk refrigeration
- Air-conditioning systems
- Reclaimed solid timber floors
- Kitchen equipment
- Alarm systems
- CCTV systems
- Sound systems
- Signage
- Decor
- Furniture
- Fire control

CONSTRUCTION / CONSTRUCTION MANAGEMENT

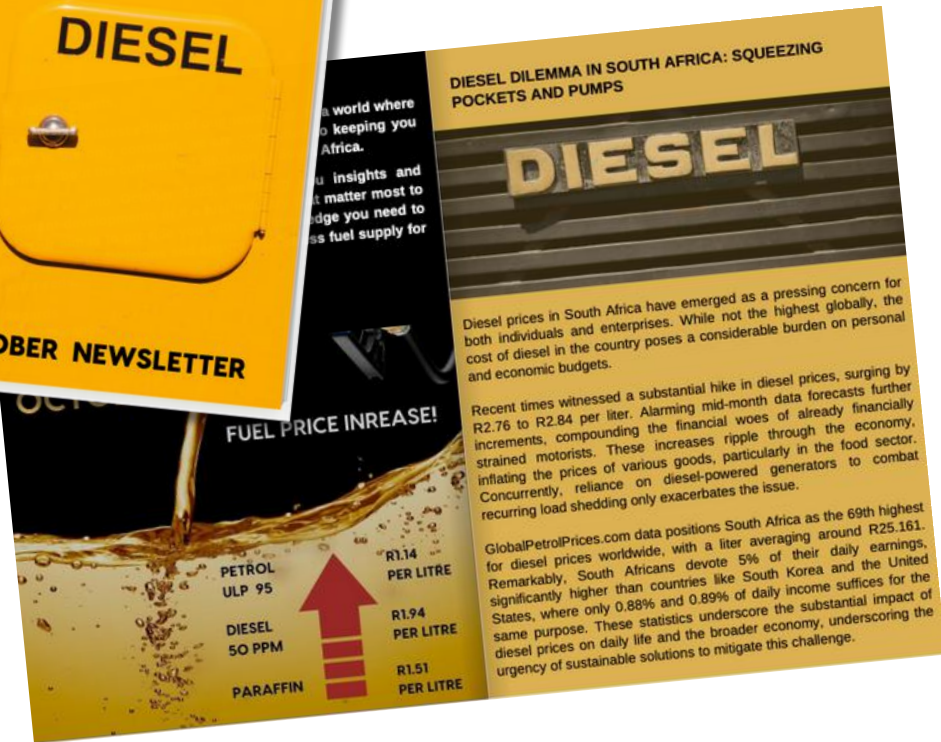
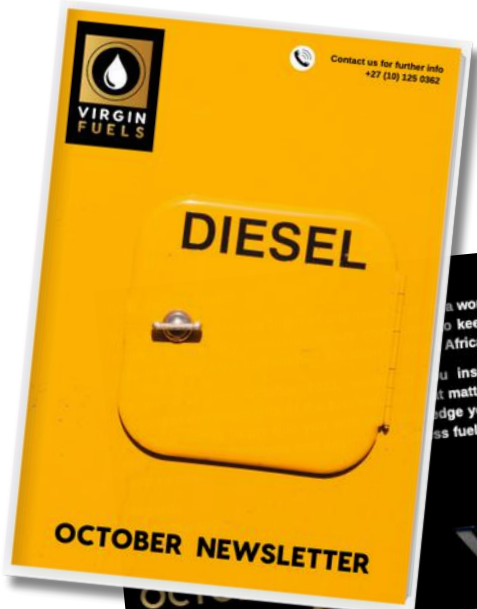
- Wet trades
- Electrical
- Plumbing
- Ceilings
- Tiling
- Painting
- Roofing
- Customized shop fitting
- Carpentry
- Civils

- Water tanks
- Water purification systems
- Generators
- Health and safety services
- Landscaping



CRAFTED NEWSLETTERS

CLIENT CONNECTIONS REDEFINED



DIGITAL BOARD CAMPAIGNS

ELEVATE YOUR SPACE WITH EYE-CATCHING DIGITAL ARTWORK

FREEDOM 2
WIRELESS SPORT HEADPHONES

SECURE + COMFORT-FIT
INTERCHANGEABLE TIPS & FINIS
FOR ALL EAR SIZES

SWEAT-PROOF + WATER RESISTANT

CUSTOM SOUND
PUMP UP THE BASS OR CRANK
THE TREBLE & NEVER MISS A CALL

8 HOURS IN YOUR POCKET
4 HRS PLAY TIME + ADDITIONAL 4 HRS WITH
INCLUDED CHARGING CLIP/BATTERY PACK

**FOR RUNNERS
DESIGNED & BUILT
BY RUNNERS**

Available in:

takealot **SUPERBALIST.COM**

JAYBIRDSPORT.COM

X3
WIRELESS SPORT HEADPHONES

SECURE + COMFORT-FIT
INTERCHANGEABLE TIPS & FINIS
FOR ALL EAR SIZES

SWEAT-PROOF + WATER RESISTANT

CUSTOM SOUND
PUMP UP THE BASS OR CRANK
THE TREBLE & NEVER MISS A CALL

8 HOURS IN YOUR POCKET
4 HRS PLAY TIME + ADDITIONAL 4 HRS WITH
INCLUDED CHARGING CLIP/BATTERY PACK

**FOR RUNNERS
DESIGNED & BUILT
BY RUNNERS**

Available in:

takealot **SUPERBALIST.COM**

JAYBIRDSPORT.COM

RUN
TRUE WIRELESS SPORT HEADPHONES

SECURE + COMFORT-FIT
INTERCHANGEABLE TIPS & FINIS
FOR ALL EAR SIZES

SWEAT-PROOF + WATER RESISTANT

CUSTOM SOUND
PUMP UP THE BASS OR CRANK
THE TREBLE & NEVER MISS A CALL

8 HOURS IN YOUR POCKET
4 HRS PLAY TIME + ADDITIONAL 4 HRS WITH
INCLUDED CHARGING CLIP/BATTERY PACK

**FOR RUNNERS
DESIGNED & BUILT
BY RUNNERS**

Available in:

takealot **SUPERBALIST.COM**

JAYBIRDSPORT.COM

PRODUCT LEAFLETS

EFFORTLESSLY SHOWCASING YOUR PRODUCT



OWN YOUR SPACE

M90 Wired Mouse
Flip over any mouse.

M100 Wired Mouse
Corded, fit in a car.

M171 Wireless Mouse
Native wireless connectivity.

M185 Wireless Mouse
Tropic, whole plug and play.

M190 Wireless Mouse
Cordless design & essential settings.

M220 SILENT Wireless Mouse
Enjoy the sound of silence.

PEBBLE M350 Wireless Mouse
Modern design to suit your style.

M187 MINI Wireless Mouse
Perfect size, with smart design.

M330 SILENT Wireless Mouse
Form, function and precision with SilentTouch.

MX MASTER 3 Wireless Mouse
Performance Wireless Mouse.

logitech



K120 Wired Keyboard

K380 Bluetooth Keyboard

MX KEYS Keyboard with Palm Rest

MK120 CORDED Keyboard & Mouse Combo

MK220 Wireless Keyboard & Mouse Combo

MK235 Wireless Keyboard & Mouse Combo

MK270 Wireless Keyboard & Mouse Combo

MK295 Wireless Keyboard & Mouse Combo

MK330 Wireless Keyboard & Mouse Combo

MK345 Wireless Keyboard & Mouse Combo

K400 PLUS Wireless Touch Keyboard
Lock-down control of your TV-connected computer.

logitech

MX KEYS MINI Wireless Touch Keyboard
Minimalist Wireless Illuminated Keyboard



logitech

NOWHERE TO HIDE. SUPER-WIDE FIELD OF VIEW.

Logitech MeetUp

Logitech MeetUp is a premium conference room designed for small conference rooms and flexible rooms. With its smart engineering, super-wide 120° field of view, MeetUp makes every seat on the table clearly visible. A low-distortion Logitech engineered lens, Ultra HD 4K optics, and three camera process devices

reverbate wide quality and further enhance voice so those collaborations. MeetUp's integrated skills is optimized for middle room scenarios and delivers an exceptional sound experience. These functionally smart conferencing tools and a custom-tuned speaker help ensure your meetings sound as great as they look.

With a compact all-in-one design that minimizes video clutter, MeetUp's USB plug and play and simply works right out of the box with any video conferencing software application and cloud services - including the ones you already use.

logitech

Microsoft Teams | Zoom | Jitsi | Cisco Webex | Google Meet | Microsoft Edge | Chrome | Firefox | Safari | Microsoft Word | Microsoft Excel | Microsoft PowerPoint | Microsoft OneDrive | Microsoft Outlook | Microsoft Teams | Zoom | Jitsi | Cisco Webex | Google Meet | Microsoft Edge | Chrome | Firefox | Safari | Microsoft Word | Microsoft Excel | Microsoft PowerPoint | Microsoft OneDrive | Microsoft Outlook | Microsoft Teams

PRODUCT PHOTOGRAPHY

SHARPER FOCUS, BOLDER IMPACT.



a full life is a collection of
Rosy Moments
wrappedmomentssa

LIFESTYLE PHOTOGRAPHY

HIGHLIGHTING THE IMMERSIVE MOMENTS

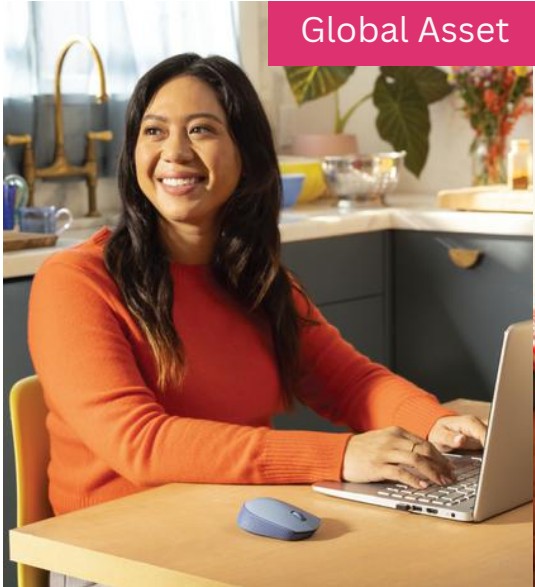


LOCAL PHOTOGRAPHY SHOOT

LOCALISING IMAGERY - CLIENT WANTED SHOTS THAT HAD A LESS YELLOW UNDERTONE & MORE MODERN, WITH AFRICAN DEMOGRAPHICS.



Global Asset



Global Asset



Global Asset



LOCAL PHOTOGRAPHY

LOCAL IS LEKKER.



LIVE WIRE FREE
LIVE CLUTTER FREE

Logitech M171 Wireless Mouse



logitech



LIVE WIRE FREE
LIVE CLUTTER FREE

Logitech M240 Silent Bluetooth Mouse



logitech



LIVE WIRE FREE
LIVE CLUTTER FREE

LOGITECH MK295 SILENT WIRELESS COMBO

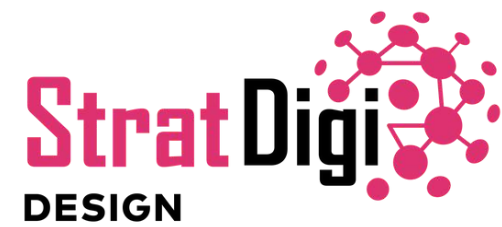


logitech



LOCAL PHOTOGRAPHY

WE UNDERSTAND THE MARKET.



GENERAL PHOTOGRAPHY

EXCEPTIONAL IMAGERY THAT COMMANDS ATTENTION.



SOCIAL CONTENT CREATION

A POST A DAY CAN KEEP THE COMPETITION @ BAY.



VIRGIN FUELS

MAXIMIZE YOUR VALUE WITH VIRGIN FUELS' INDUSTRY-LEADING FUEL CONSULTANTS

+27 (10) 125 0362 WWW.VFUELS.CO.ZA

SMART FUEL MANAGEMENT SOLUTIONS, MAKING A DIFFERENCE!

VIRGIN FUELS

+27 (10) 125 0362 WWW.VFUELS.CO.ZA

VIRGIN FUELS

FUELING TOMORROW'S TRANSPORTATION TODAY!

+27 (10) 125 0362 WWW.VFUELS.CO.ZA

ASTRON ENERGY

Unleaded R21.45
Diesel R19.91

FRESHSTOP
UCOUNT

SEATTLE COFFEE CO

NEW YEAR...
NEW SAVINGS!

WITH SEATTLE'S FINEST COFFEE

EMERGENCY
CHANGING
WITH
HEAD

VIRGIN FUELS

REVOLUTIONISE YOUR FUEL EXPERIENCE...
TEAM UP WITH VIRGIN FUELS!

VIRGIN FUELS

POWERING PROGRESS WITH PURPOSE!

+27 (10) 125 0362 WWW.VFUELS.CO.ZA

PARTNER WITH VIRGIN FUELS FOR COST-EFFICIENT REFUELING SOLUTIONS

VIRGIN FUELS

+27 (10) 125 0362 WWW.VFUELS.CO.ZA

AND BOLD BREWS COLLIDE

SEATTLE COFFEE CO

2024
HAPPY NEW YEAR

QUALITY FUEL

VIRGIN FUELS

VIRGIN FUELS

Fuel For Thought

VIRGIN FUELS

POWER THROUGH LOAD SHEDDING: NEVER RUN DRY WITH OUR FUEL DELIVERY SERVICES

+27 (10) 125 0362

MORE THAN FUEL: ASTRON ENERGY CEDAR, YOUR COMPLETE JOURNEY COMPANION!

FUEL UP, FILL UP

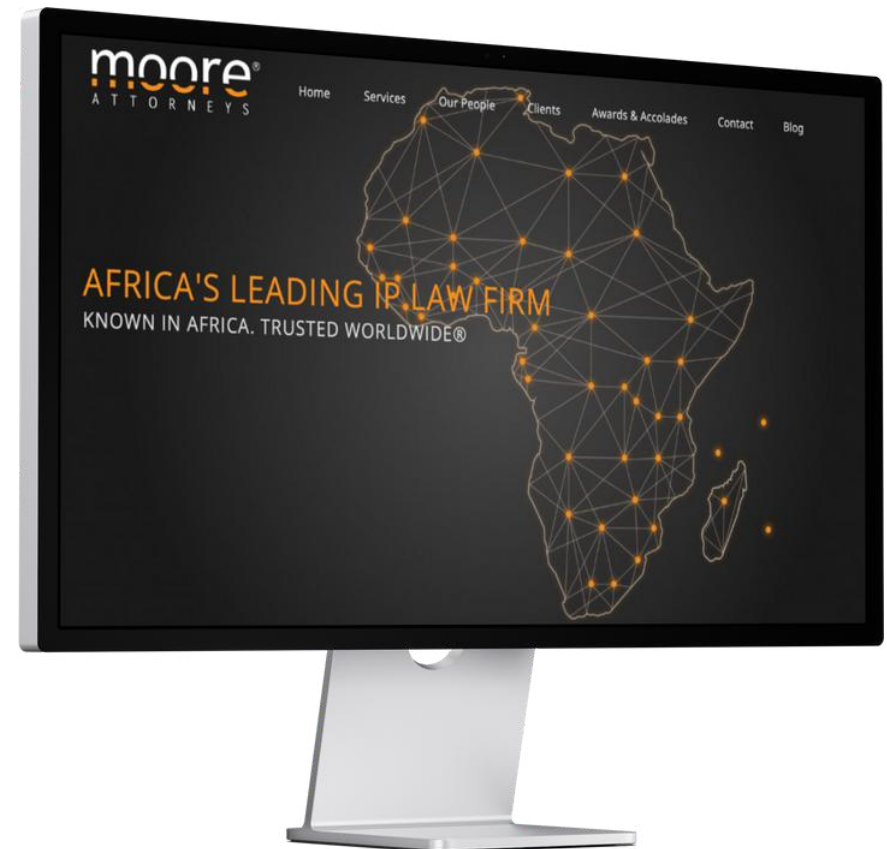
DECEMBER FUEL DELIVERY

RESPONSIVE WEBSITE DESIGN

DESIGNING DREAMS, CRAFTING DIGITAL REALITIES,
YOUR WEBSITE, OUR MASTERPIECE.



<https://www.elcoplas.co.za>

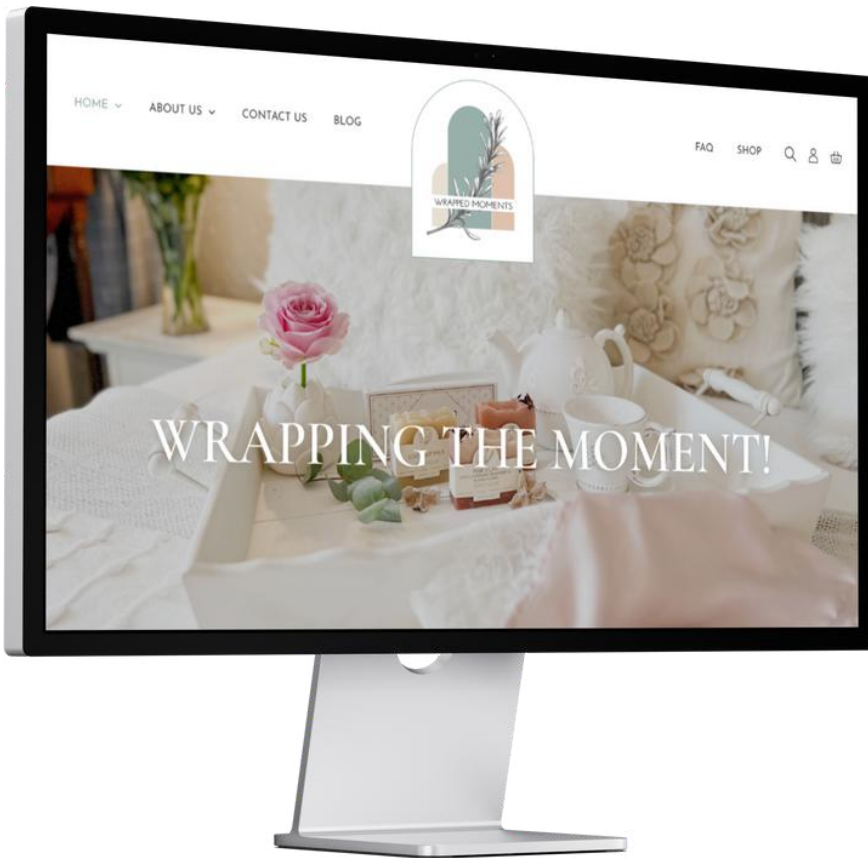


<https://mooreattorneys.com>

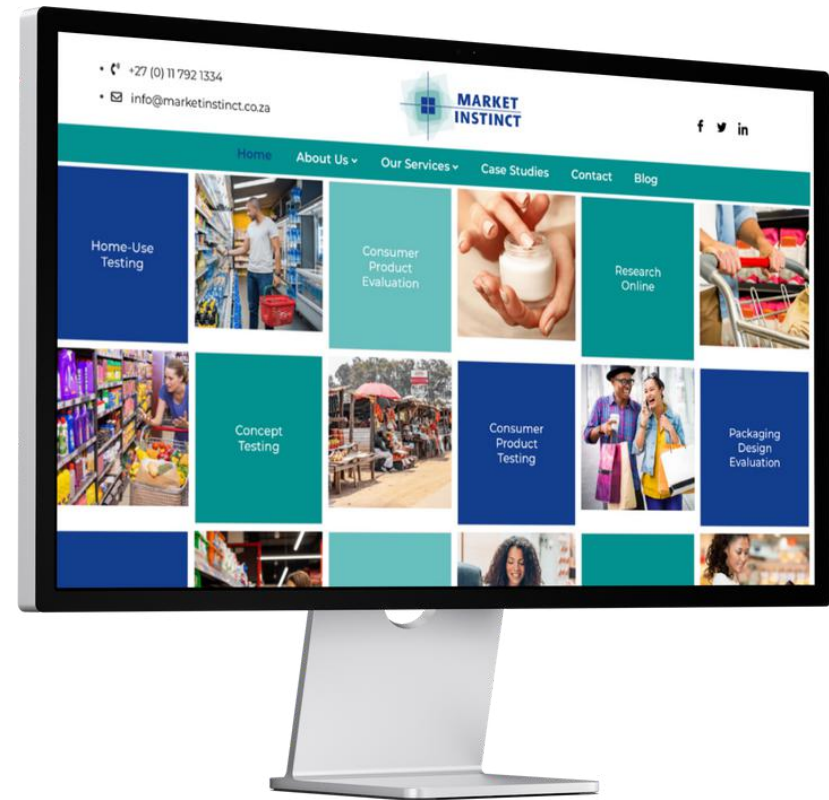
www.stratdigi.co.za

RESPONSIVE WEBSITE DESIGN

REVITALIZE, REIMAGINE, REFRESH: TRANSFORM YOUR ONLINE PRESENCE WITH A WEBSITE MAKEOVER!



<https://wrappedmoments.co.za>



<https://marketinstinct.co.za>

www.stratdigi.co.za

BLOG CONTENT CREATION

SPARK CONVERSATIONS, IGNITE ENGAGEMENT.



[CLICK HERE](#) 

DIGIT
ALDE
SIGN
BRAN
DING
EVEN
TS



www.stratdigi.co.za