

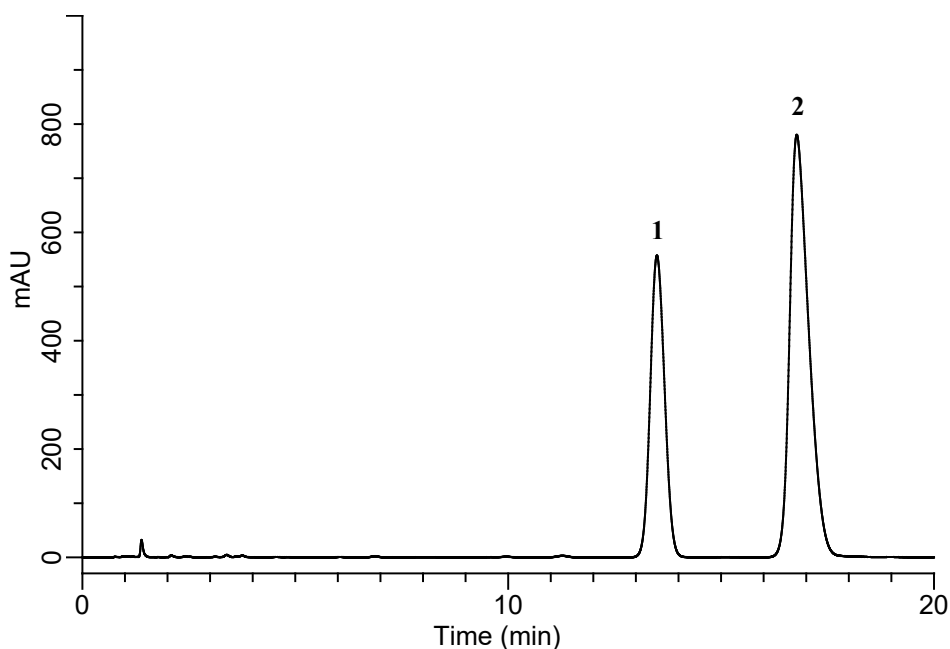
InertSearch™ for LC

Inertsil® Applications

Analysis of Ibuprofen

(Under the Condition of USP43-NF38)

Data No. LB749-7111



Conditions

System : Chromaster HPLC system (HITACHI)
Column : Inertsil WP300 C18 (GL Sciences Inc.)
(5 μ m, 150 x 4.0 mm I.D.)
Column Cat. No. : 5020-05835
Eluent : Solution*
Flow Rate : 2.0 mL/min
Col. Temp. : 30 °C
Detection : UV 218 nm
Injection Vol. : 5 μ L
Sample : Standard

Analyte:

1. Valerophenone 5,000 mg/L
2. Ibuprofen 5,000 mg/L

Relative retention times

Valerophenone : 13.48 (0.8)
Ibuprofen : 16.78 (1.0)

Resolution : 4.56 (\geq 2.0)

RSD of the
peak area of 2 (%) (n=6) : 1.13

* Prepare a suitable filtered mixture of water, previously adjusted with phosphoric acid to a pH of 2.5 and acetonitrile (1340:680).