

---

# JAPAN

---

LOOKBOOK

EXPAND YOUR KNOWLEDGE

---

CV

# WELCOME

WE'RE HAPPY TO INTRODUCE OUR FEATURED DESTINATION:

J A P A N

Travel to the breathtakingly unique destination of Japan. As you venture through rich cultural heritage, awe-inspiring nature, and world-renowned cuisine, you'll discover an unmatched diversity that will leave you wanting to explore. Here, modern luxury is juxtaposed with the preservation of tradition to bring peace and adventure in one setting.

The Classic Vacations *Training LookBook* is designed to give you the resources you need to sell our amazing featured destination. Here, you'll get a glimpse into the magnificence that is Japan with enticing hotel details, destination highlights, and a customizable flyer to share with your clients.





04 TRAVEL ADVISOR FLYER



05 EXPERIENCE TRADITIONAL CULTURE



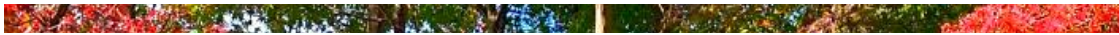
06 ENJOY EXQUISITE FOOD



07 CELEBRATE FESTIVALS & EVENTS



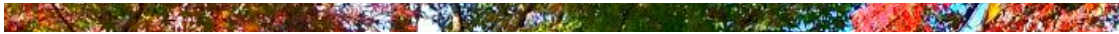
08 OUR PREFERRED PARTNERS



10 FOUR SEASONS HOTEL KYOTO



12 HYATT REGENCY HAKONE RESORT & SPA



14 THE RITZ-CARLTON, KYOTO



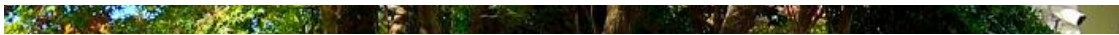
16 THE RITZ-CARLTON, TOKYO



18 THE ST. REGIS OSAKA



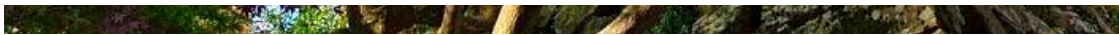
20 THE TOKYO EDITION, TORANOMON



22 THE WESTIN TOKYO



24 TOKYO MARRIOTT HOTEL



26 CLASSIC ROYALTY REWARDS



27 PREFERRED JAPAN PARTNERS ON THE MAP



28 TRAVEL ADVISOR BUNDLE



30 CONTACT US





# Discover the incomparable beauty of Japan

Inspiration awaits as you enter a new realm of beauty in Japan - where rich culture, modern art, world-renowned cuisine, and stunning nature will leave you with the most unforgettable experiences.

---

## PREFERRED PARTNERS

---

### **HAKONE GORA**



HYATT REGENCY HAKONE RESORT AND SPA

### **KYOTO**



FOUR SEASONS HOTEL KYOTO  
THE RITZ-CARLTON, KYOTO

### **OSAKA**



THE ST. REGIS OSAKA

### **TOKYO**



THE RITZ-CARLTON, TOKYO



THE TOKYO EDITION, TORANOMON



THE WESTIN TOKYO

TOKYO MARRIOTT HOTEL



**Japan.** Endless Discovery.

*Click on each partner to view hotel details!*

---

[ClassicVacations.com](http://ClassicVacations.com) | 800.221.3949

\*Offers are valid on new bookings only. Prices shown are per person (unless otherwise stated), land-only, and based upon double occupancy unless expressly noted otherwise. Offers are subject to availability at the time of booking and may be changed or discontinued at any time without notice. Blackout dates, minimum night stays, and minimum stay requirements are subject to change. Seasonal surcharges, resort fees (if any), and other restrictions may also apply. Offers are not valid for Group Travel. Some booking and travel dates may vary. Other promotions and departure dates are available which may result in a different rate and/or hotel inclusion. The customer is responsible for hotel taxes and fees on the free night offers, where applicable. For those properties where Classic Vacations has access to dynamic pricing rates, those rates will likely fluctuate from time to time based on market conditions and other factors beyond Classic Vacations control. Classic Vacations CST# 2079429-20.





# experience

## traditional culture



There are unique forms of traditional culture in Japan that have been handed down for many generations, each influenced by neighboring countries and the West and evolving in their original way. Enjoying precious experiences only available in Japan and deepening your exchange with Japanese people will enable you to understand Japan's allure better. Experience-oriented programs are offered not only in Tokyo and Kyoto but also in other cities around Japan.

### MAIKO (Apprentice Geisha) EXPERIENCE

*Maiko* are apprentice geisha who perform classical Japanese dances and other forms of entertainment at Japanese-style banquets called *ozashiki*. Their culture is colorful and deep, characterized by artistic costumes and makeup, the performance of art skills, and a unique style of speech and language. Experience what it's like to dress up as a *maiko* for a day and take some glamor shots.

### POTTERY EXPERIENCE

Enjoy the picturesque combination of bowls and food that is part of Japanese culinary culture. There are many ceramic workshops across Japan where you can make an original bowl of your own.



---

# *enjoy* exquisite food

---



Japanese cuisine is so revered that you can find it almost anywhere in the world, whether it's your local sushi belt or a bar serving sake. Despite this, nothing compares to the quality and variety of foods you taste when visiting Japan.

From the traditional dishes of Kaiseki cuisine, sashimi, sushi, and more that were developed from thousands of years of isolation to truly unique regional specialties, all of which are accompanied by distinctive and iconic Japanese drinks, Japan provides a smorgasbord of options for food lovers to discover.

## how to eat ramen *like a local*



Advice from self-proclaimed ramen-enthusiast and Time Out Tokyo Deputy Editor, Kit Kriewaldt. Read full article [HERE](#).

"If you're an international traveller people will understand that you might not know all the Japanese etiquette. That's not to say you can purposely act rude, but you don't have to stress out. Slurping is one topic that gets thrown around a lot and it's fine; it's not polite and not rude, it's just something you can do."





---

# celebrate

## festivals & events



The word *matsuri* (festival) is said to have come from the expression *matsuru* (to worship something as a god). In Japan, where the cultivation of rice has been widely practiced since ancient times, people hold festivals to pray for bumper crops when rice planting begins in the spring, pray for protection from crop epidemics and typhoons in the summer, and thank the gods in the fall when rice is harvested. There are also ceremonies of Buddhist origin, such as *bon odori* (bon festival dance) and *okuribi* (ceremonial fires lit to speed the spirits of the dead on their way), that are held in the *Bon* (Lantern Festival) period in August when the dead and ancestors are said to visit this world.

### FIREWORKS IN JAPAN

Fireworks displays are a significant highlight of visiting Japan in summer. Although the word “fireworks” is used in English, a direct translation of the Japanese is “fire flowers.” Fireworks technology in Japan is sophisticated, and the country puts on some of the most impressive shows in the world. These are held in all areas of Japan, during July and August.

### GION MATSURI (Gion Festival) / KYOTO

Shinto rituals and associated events for this festival continue for one month every year in July. The main events are *yoiyama* (a festival held on the eve of the main festival) on July 16 and *yamaboko junko* (a circling of city blocks by festival floats) on July 17 and 24. The Gion Matsuri is registered on the UNESCO intangible cultural heritage list.

### KISHIWADA DANJIRI FESTIVAL / OSAKA

The soul-stirring sight of men boldly pulling festival floats called *danjiri* all over town is the defining feature of the Kishiwada Danjiri Festival. This festival is held every year in September in Kishiwada, a city located in the southern part of Osaka Prefecture.



# OUR PREFERRED PARTNERS









# — FOUR SEASONS HOTEL KYOTO —

A MODERN GARDEN SANCTUARY DRAPED IN HISTORY







---

## WELCOME

Sunlight peeks through the tall, slender stems of bamboo that lead you to this intimate sanctuary in Kyoto's temple district – the only hotel in Japan named on Travel + Leisure's The 100 Best Hotels in the World in 2022. At the heart is the 800-year-old Shakusui-en, a pond garden that firmly grounds Four Seasons Hotel Kyoto in tradition, artistry, and natural beauty.

## REST + RELAX

- GUEST ROOMS blend refined, modern aesthetics and Japanese art. Large windows offer views across the courtyard, garden, or city.
- SUITES are ideal for business trips or family vacations. The expansive suites provide distinct living and sleeping spaces with zen-like marble bathrooms and views across our enchanting pond garden or courtyard.
- RESIDENTIAL SUITES provide the perfect retreat for those seeking flexibility and privacy with all the trappings of home. Designed to maximize *Kutsurogi*, the Japanese art of relaxation, private kitchens and amenities make for easy entertainment and hosting.
- SPECIALTY SUITE, located on the 4th-floor, is Kyoto's largest hotel suite. Entertain or relax in your living and dining room, or ask our dedicated team to prepare a cocktail in your private pantry area.

## INDULGE

Various dining options are available: Brasserie for seasonal delights, Sushi Wakon for the sushi-lover, Fujū for crafted Japanese sweets, the Lounge & Bar for coffee and cocktails, and In-Room Dining for those wanting to linger in the privacy of their room. If you would like more indulgence, you can enjoy a treatment at the spa.

# — HYATT REGENCY HAKONE RESORT

A WARM WELCOMING, LIKE AN OPEN HEARTH







---

## WELCOME

The at-home comfort of a mountain lodge meets contemporary sophistication at Hyatt Regency Hakone Resort and Spa. Set in the Fuji-Hakone-Izu National Park, the hot-spring getaway invites relaxation with serene spaces, plenty of nature, and warm hospitality that extends even to guests' dogs.

## REST + RELAX

All 80 guest rooms range in size from approximately 600 to 1,000 square feet, include two twin beds, and have a sun terrace or balcony, so you can enjoy the resort while feeling the vast nature. Based on the concept of "My home in Hakone," you'll be met with warm service and a relaxing stay that makes you feel at home.

- GUEST ROOMS range from mountain views to dog-friendly deluxe. A room with an accessible tub option is also available for guests.
- SUITES include a spacious living area with a sofa. The Regency Executive Suite Twin and Regency Suite Tatami have a bath with jetted spa tub.

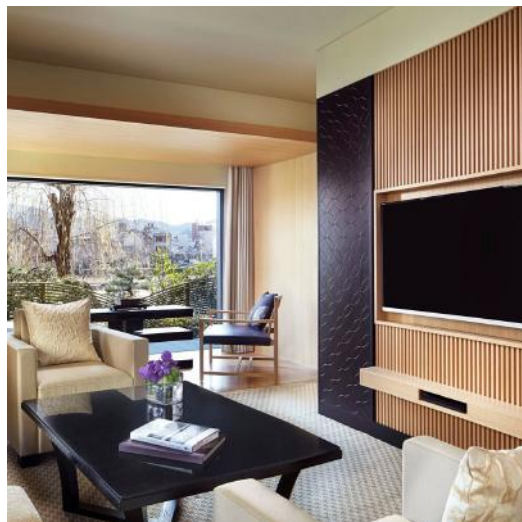
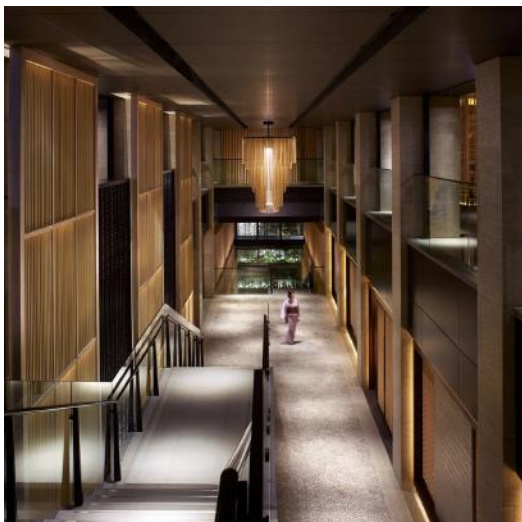
## INDULGE

The Dining Room of Hyatt Regency Hakone Resort and Spa offers sophisticated gastronomic experiences in a refined and elegant setting. You can enjoy Western cuisine during breakfast, lunch, and dinner. Sushi is also offered in the dining room during dinner time. The Living Room provides a comfortable seat near the open log fireplace and a wide selection of snacks, drinks, and light meals. Room service and private dining are also available.

Immerse yourself in a tranquil and serene environment at Spa Izumi & Onsen Hakone. Experience traditional Japanese spa treatments that use the science of natural medicine, and soothe your body in the famed hot springs.

# THE RITZ-CARLTON, KYOTO

A LUXURIOUS DISPLAY OF MODERN ART







---

## WELCOME

Steeped in history and honed by five-star service, The Ritz-Carlton, Kyoto expresses the culture of its city in a language of thoughtful details. This begins upon arrival at the hotel, when check-in is conducted over traditional Japanese tea. It continues with the 409 pieces of modern Japanese artwork on display throughout the hotel, signature cuisine, and cultural experiences on offer.

## REST + RELAX

The 134 immaculately designed and recently refurbished hotel rooms and suites feature spacious layouts and gorgeously realized details, tempting guests to forgo exploration in favor of relaxed seclusion. Suite amenities include handmade soaps, 600-count linens, and complimentary Internet access.

- GUEST ROOMS overlook the beautiful city, hotel courtyard, tranquil Japanese Garden, and flowing Kamogawa River.
- SUITES include a separate living area, some with a personal terrace deck. Corner suites offer additional views with windows in two directions. Views range from the Kamogawa River and mountains and the Japanese Zen garden.

## INDULGE

From Michelin-starred Tempura Mizuki to the Italian cuisine of La Locanda, dining at The Ritz-Carlton, Kyoto both delights and surprises. The hotel offers four restaurants, sweet indulgences at its Pierre Hermé Paris Boutique and special experiences like wine tastings and private dining.

Along with indulgent dining, fully immerse yourself in luxury spa with indigenous treatments, a 24-hour fitness center and indoor pool, and cultural resort activities including sake tastings and samurai experiences.

# THE RITZ-CARLTON, TOKYO

A MIDTOWN TOWER ELEVATING HOTEL LUXURY







---

## WELCOME

A stay at this downtown Tokyo hotel begins on the 45th level of Midtown Tower, one of the city's tallest buildings. Floor-to-ceiling windows perfectly frame the skyline, from the Tokyo bay area to National Stadium to Mount Fuji. As guests settle in, they discover luxury amenities as impressive as the view over Tokyo, Japan: seven incredible restaurants, Club Level accommodations, a floor dedicated to health and wellness, and reimagined meeting spaces.

## REST + RELAX

Guest rooms and hotel suites are a welcome respite to the vibrant city below, from an East-meets-West design to marble bathrooms and luxury accommodations. Club Lounge on the 53rd floor includes four ambient spaces, culinary offerings, and exclusive events.

- GUEST ROOM views range from the Imperial Palace Garden, Tokyo skylines, courtyard, the Tokyo Skytree, the Rainbow Bridge, Shinjuku, and Mt. Fuji.
- SUITES add a more luxurious experience with a spacious living area, decadent amenities, and exclusive benefits and services. Views range from Tokyo bay, city skylines, the hotel courtyard, Mt. Fuji, and the Imperial Palace Garden.

## INDULGE

Each of the seven restaurants and bars at this Midtown hotel broaden your horizons, much like the vistas stretching across the Tokyo skyline. Discover French cuisine at Azure 45, Japanese dining experiences at Hinokizaka, and seasonal produce paired with local seafood at Towers.

When you aren't enjoying a meal or drink at the hotel, a 21,528-square-foot spa and fitness center calls for additional rejuvenation.



# THE ST. REGIS OSAKA

A COVETED LOCATION IN THE HEART OF MIDOSUJI







---

## WELCOME

Reside in the heart of beautiful Midosuji, the Champs Elysées of Osaka. The St. Regis Osaka is located near popular destinations such as Universal Studios Japan, the Osaka Aquarium Kaiyukan, and the city's most exclusive shopping districts. There is no better location to explore the city center and neighboring cities of Kyoto, Nara, and Kobe.

## REST + RELAX

Just as traditional Japanese architecture is designed in harmony with nature, all guest rooms and suites are uniquely themed with concepts of flowers and trees, such as lilies, pines, and wisteria, creating a more home-away-from-home feeling. Adorned state-of-the-art amenities, each accommodation has the hallmark St. Regis Butler Service on standby for every desire.

- GUEST ROOMS offer soaring views of the Osaka skyline and range from a double bed, one king bed, and corner option.
- SUITES offer a more spacious and elevated experience with contemporary living spaces. Options range from Grand Deluxe, Executive, Yuri, Fuji, Matsu, and Royal suites - each with it's own character and design.

## INDULGE

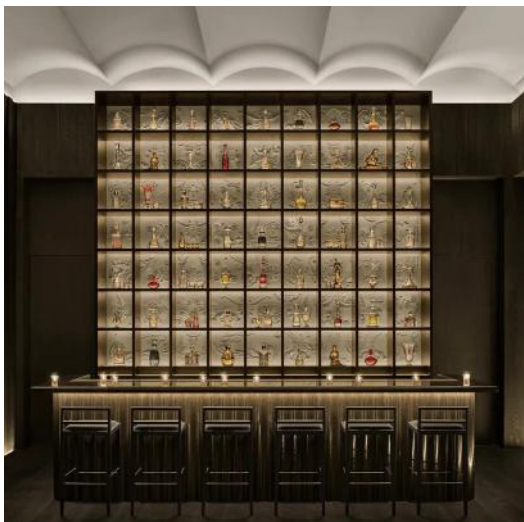
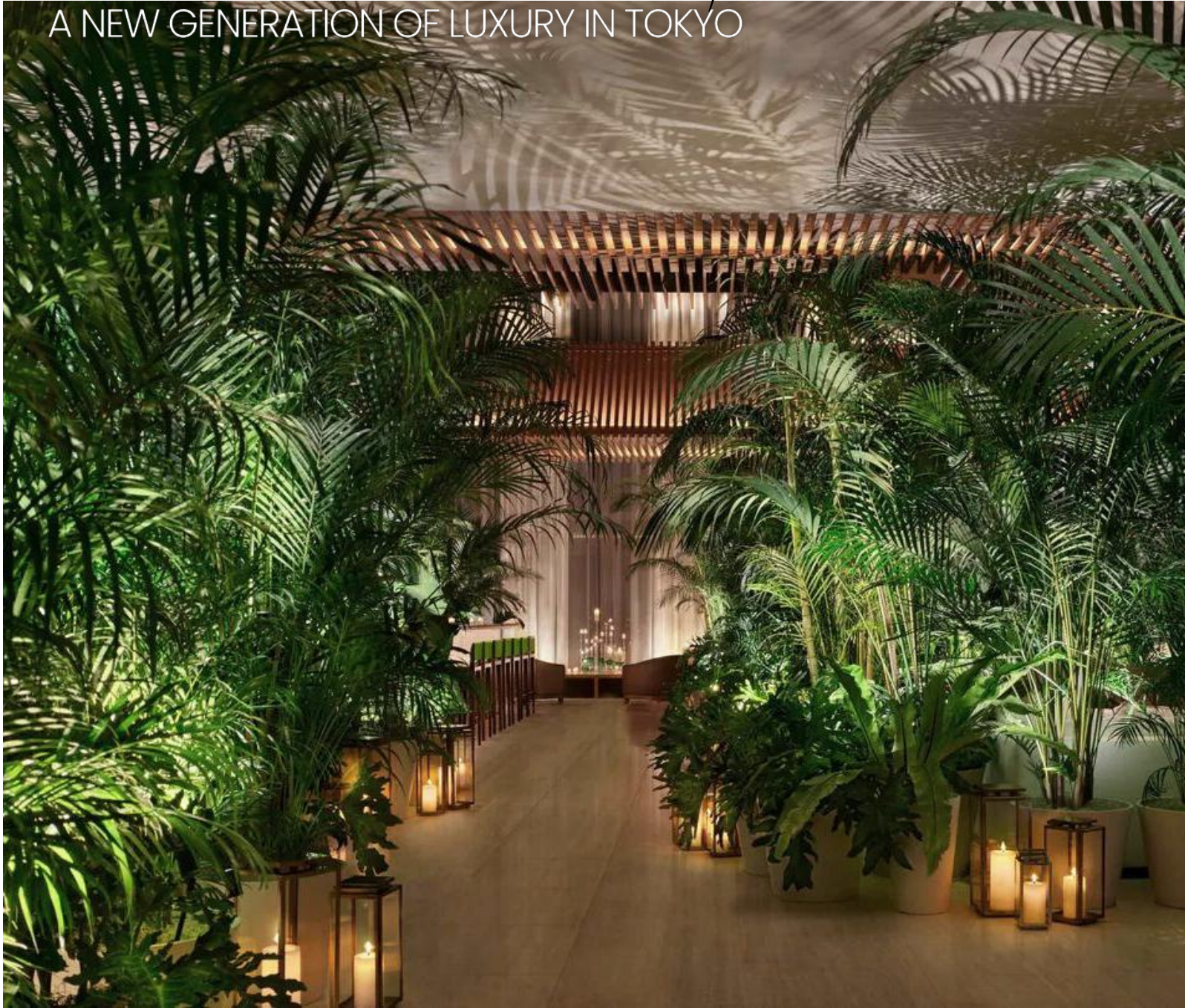
Unique dining experiences await at St. Regis restaurants. Rue d'Or features classically inspired French bistro cuisine with a contemporary twist. At La Veduta restaurant, discerning diners savor the delights of Northern Italian dishes. The St. Regis Bar offers an artful menu of cocktails, afternoon teas, and small plates.

For more indulgence, visit IRIDIUM featuring SOTHYS for a sublime retreat with quintessential treatments designed to address every skin and body care need.



# — THE TOKYO EDITION, TORANOMON

A NEW GENERATION OF LUXURY IN TOKYO







---

## WELCOME

EDITION is an unexpected and refreshing collection of individualized, one-of-a-kind hotels. Just minutes from the Tokyo Tower and Tokyo's renowned art, cultural landmarks, nightlife and restaurants, The Tokyo EDITION, Toranomon offers an unprecedented intersection between tasteful designs, innovation, and elevated service. Showcasing premier dining, entertainment, and amenities under one roof, this enchanting hotel in downtown Tokyo offers an oasis of sophistication in Japan.

## REST + RELAX

Designed by Kengo Kuma with the vision of Ian Schrager, all 206 guest rooms and suites offer a breathtaking glimpse of the Tokyo skyline, including views of the Tokyo Tower and Tokyo Bay, as do the first-of-its-kind accommodation with private terraces starting from level 31.

- GUEST ROOMS guarantee magnificent views of Tokyo Tower and Tokyo Bay from the moment you walk into the door. Elevate this experience with one of 15 Private Terrace Rooms starting from level 31.
- SUITES embrace modern luxury with the ultimate penthouse experience, featuring a spacious living room with an island kitchen, king bedroom with lavish bathroom, complete with floor-to-ceiling windows.

## INDULGE

An Ian Schrager-conceived concept showcases the best dining and entertainment with the first-of-its-kind dining terrace in a skyscraper. Your dining experience can be enjoyed at The Blue Room, Lobby Bar, The Jade Room + Garden Terrace, and Gold Bar at EDITION. Embrace your hotel experience further with a relaxing trip to The Spa at The Tokyo EDITION, Toranomon; state-of-the-art GYM; heated, indoor swimming pool; and sensational whirlpool.

# THE WESTIN TOKYO

A MODERN SOPHISTICATION FOR BUSINESS AND LEISURE







---

## WELCOME

The Westin Tokyo welcomes you to the center of the most metropolitan city in Japan. Situated in the quiet, upscale area of Ebisu, yet still offering convenient access to the bustling Shibuya and Roppongi areas, this hotel is perfect for both business and leisure travelers. With its strategic location and thoughtful amenities, the Westin Tokyo ranks as one of the best hotels in Tokyo. Their hospitality embodies a modern sophistication that stays true to traditional Japanese values.

## REST + RELAX

Classic European décor adorns each room, accompanied by the signature Heavenly® Bed, to ensure you leave feeling better than when you arrived. Selected rooms and suites allow you to enjoy views of the iconic Tokyo Tower and truly embrace the Japanese capital.

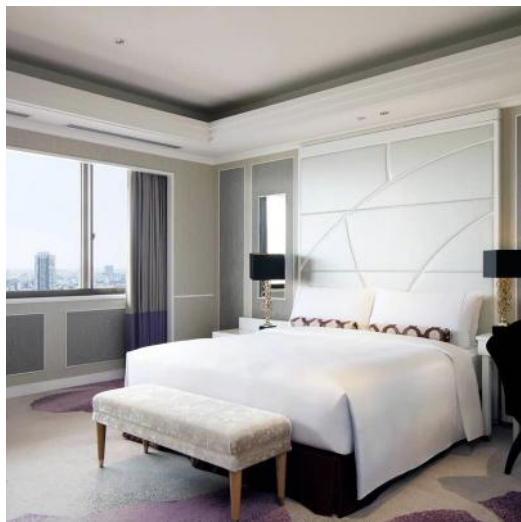
- GUEST ROOMS offer a double or one king bed option along with the elevated opportunity for club lounge access on the high floor.
- SUITES provide club lounge access and a spacious living area with each option. Choose between a double or one king bed suite, the Executive Suite on a high floor, the Presidential Suite with a view of the Tokyo Tower, or the Imperial Suite on a high floor with a Tokyo Tower view.

## INDULGE

Enjoy the various dining experiences offered at The Westin Tokyo including superb French dishes at Victor's, regal Cantonese dishes at Ryutenmon, the international buffet at The Terrace, authentic multi-course Japanese meals at Mai, teppanyaki excellence at Yebisu, drinks and refreshments at The Lounge and The Bar, and impressive cocktails at The Compass Rose. When you're not dining, explore the European-style spa, Le Spa Parisien, and Westin WORKOUT® Fitness Studio.

# TOKYO MARRIOTT HOTEL

A PERFECT BLEND OF STYLE AND SUBSTANCE







---

## WELCOME

Tokyo Marriott Hotel welcomes you to Japan with the perfect blend of style and substance. Located near Shinagawa Station, this hotel places Central Tokyo at your doorstep. At the same time, the close proximity to the peaceful Gotenyama Garden provides a sense of serenity in the heart of the vibrant city.

## REST + RELAX

The spacious, intuitively appointed rooms and suites provide a serene retreat in Tokyo, Japan. Escape to the tranquility of your room or suite, which features a mini-fridge and plush bedding. If you're in the city for work, you'll appreciate complimentary Wi-Fi and an in-room ergonomic desk.

- GUEST ROOMS vary from Superior, Deluxe (Twin Single/Twin Double/King), High floor Deluxe, Pure Wellness, Executive Deluxe, Family Room, and the Executive Premier room with lounge access.
- SUITES include Junior, Royal, Gotenyama, and Presidential options, all with a spacious living area and access to the Executive Lounge.

## INDULGE

Indulge in the hotel's Lounge & Dining G where you can savor American-style dining. Start the day with a hearty breakfast buffet and complete the evening with a creative cocktail. The hotel also includes the G ~ Wa Selection, an exciting venue for contemporary Japanese cuisine serves both modern Edomae sushi as well as new sushi interpretations and creative Franco-Japonais dishes. The hotel bakery also offers freshly bread and pastries everyday.

If you need to relieve stress, take a trip to Tokyo Marriott Hotel's fitness gym with the latest workout equipment.



# Earn points with every FIT booking

## 2022 Virtual Retail Gift Card

Every 200 points earns you a **\$75 Gift Card**

Requirements:

- A minimum of 200 eligible points in your 2022 points account
- Submit a VRGC Redemption Form
- Include your personal W9
- Agency Owner or Manager approval

VRGC requests are processed on the last Friday of each month.

Recipients will receive an email the first week of the following month. The email will contain a link to choose your Virtual Retail Gift Card(s).

Choose your VRGC.

You may split your gift card value among two or more gift cards. You will have options like *Disney Store, Amazon, Sephora, Safeway, Starbucks, Target*, and many more!

Click here to complete and submit your request for a [Virtual Retail Gift Card](#)

Click here to [Check your Points](#)

**Virtual Retail Gift Card:** Every Classic booking that travels between January 1, 2022 through December 31, 2022 are eligible toward 2022 Gift Card redemption. A maximum of 1200 Royalty Points are allowed for redemption per calendar year. Your 2021 Royalty Points may not be combined for gift card redemption. Only U.S.-based agents qualify for gift card redemption. Group points are eligible for Travel redemption and may not be redeemed for a VRGC. 2022 Points towards VRGC expire 2.28.23 remaining points may be used for Travel, see below.

**Travel:** Points may only be used on Advisors' personal travel with Classic Vacations. Payment in full is required. The \$29 minimum payment is non-refundable. Points cannot be used for minimum payment or processing fees. Points are applied just prior to travel date as a refund. Points applied to the booking are non-refundable. Points may not be applied to canceled or past travel bookings. 2021 Points expire March 24, 2023. 2022 Points expire March 22, 2024.

Visit our Instagram featuring Travel Advisors Royalty Rewards in action: [#weareclassicvacations](#)

See complete list of Terms and Conditions: [www.classicvacations.com](http://www.classicvacations.com)

Contact: [points@classicvacations.com](mailto:points@classicvacations.com)

## 2022 Travel and Explore

Every 200 points earns you a **\$150 Travel Credit**

Requirements:

- A minimum of 200 eligible points
- Make your booking with Classic Vacations
- Pay Deposit and Final by due dates
- Submit a Travel Redemption Form
- Agency Owner or Manager approval

Submit your travel redemption at least 30 days prior to departure.

Recipients will receive an email receipt upon submission. Agency Owner/Manager will receive an email to approve.

Points are redeemed and applied to your booking 2 to 3 days prior to departure as a refund.

No travel blackout dates! Travel to any of Classic Vacations destinations. Use your Rewards towards Air Only, Hotel Only, Package, Car or Tours. Book online or call 800-221-3949 (choose 1 than 3 at prompt). Pay the NET due only (no commission).

Click here to complete and submit your request for [Travel Redemption Form](#)



# PREFERRED JAPAN PARTNERS ON THE MAP

View the Classic Preferred Partners of Japan on the map!





# TRAVEL ADVISOR BUNDLE







Access the tools and resources to help you sell our Classic Preferred Partners in Japan.

We created a consumer-friendly flyer for you to share with your clients. To customize, download, open in Adobe Acrobat, add your contact information, and replace logo.

[DOWNLOAD CONSUMER FLYER](#)

Here are some other helpful resources provided by the Japan National Tourism Organization as you plan your next trip.

[VIEW TRAVELER PROCESS](#)

[VIEW FAQ ABOUT JAPAN TRAVEL](#)



# C O N T A C T U S

EXPAND YOUR KNOWLEDGE

---

1.800.221.3949 CV