

Simple Concentration and Analysis of Maple Syrup Flavor Components - Using Sorptive Media MonoTrap

MonoTrap RGC18TD, a simple enrichment tool was used to screen and analyze the flavor components in maple syrup. MonoTrap RGC18TD is individually packaged in ampoules, with no pre-conditioning required and no risk of contamination.

Preliminary processing procedure

Maple syrup

Place 20 g in 40 mL vials

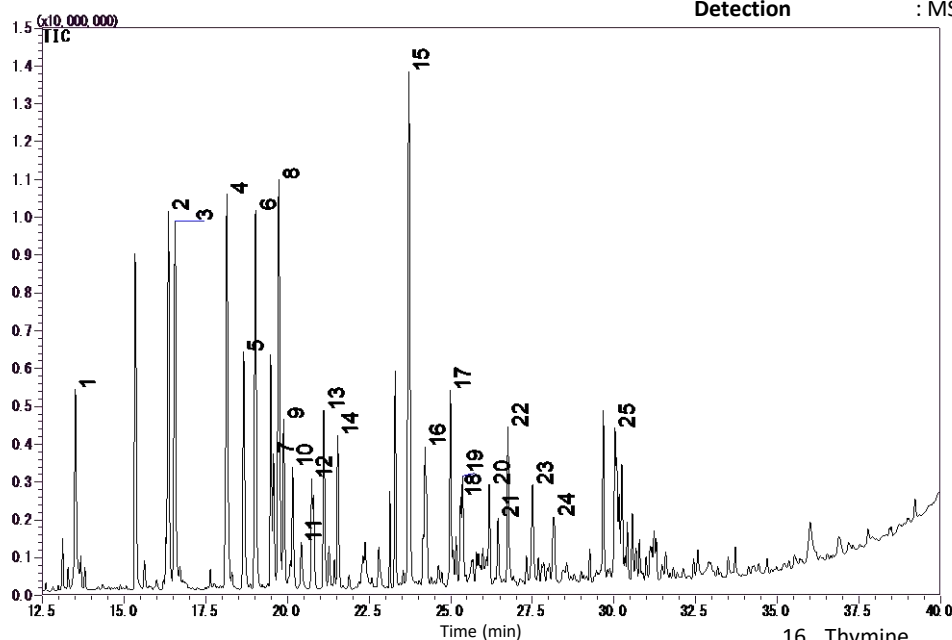
Collection (HS)
One MonoTrap RGC18TD

60 °C for 12 h

TD-GC-MS

Conditions

System	: GC-MS-Thermal Desorption
Column	: InertCap Pure-WAX 0.25 mm I.D. x 60 m df = 0.25 µm
Col.Temp.	: 40 °C (5 min) - 6 °C/min - 250 °C
Carrier Gas	: He 1 mL/min (constant flow)
Desorb Temp.	: 200 °C
Time	: 5 min
Flow	: 5 mL/min
Split	: 25 mL/min
Cryo Trapping	: -150 °C
Injection Temp.	: 250 °C
Detection	: MS Scan (<i>m/z</i> : 28.5 - 600)



* Standard samples are not used for qualitative analysis. Results from a library search.

- | | | |
|---------------------------|--------------------------------------------------------------------|-------------------------------------------|
| 1. Isobutyl alcohol | 9. Ethylpyrazine | 16. Thymine |
| 2. D-Limonene | 10. Dimethylpyrazine | 17. 2,3-Butanediol |
| 3. Isopentyl alcohol | 11. 2-Cyclopenten-1-one | 18. Propylene Glycol |
| 4. Methylpyrazine | 12. 2-Methyl-2-cyclopentenone | 19. 3-Methylenedihydro-2(3H)-furanone |
| 5. Acetyl methyl carbinol | 13. 2-Ethyl-6-methylpyrazine | 20. M-Methoxytoluene |
| 6. Hydroxyacetone | 14. Trimethylpyrazine | 21. 2-Acetyl-4-methylpyridine |
| 7. Dimethylpyrazine | 15. 5-c-Acetyl-1,4-anhydro-2,6-dideoxy-1,4-dimethylhex-1-en-3-ulos | 22. 2-Furanmethanol |
| 8. Dimethylpyrazine | | 23. 3-Ethyl-2-hydroxy-2-cyclopenten-1-one |
| | | 24. 3-Methyl-2(5H)-furanone |
| | | 25. 2-Hydroxy-1-methylcyclopenten-3-one |

GL Sciences disclaims any and all responsibility for any injury or damage which may be caused by this data directly or indirectly. We reserve the right to amend this information or data at any time and without any prior announcement.

GL Sciences, Inc. Japan

22-1 Nishishinjuku 6-Chome
Shinjuku-ku, Tokyo,
163-1130, Japan
Phone: +81-3-5323-6620
Fax: +81-3-5323-6621
Email: world@glsc.co.jp
Web: www.glsciences.com

GL Sciences B.V.

De Sleutel 9
5652 AS Eindhoven
The Netherlands
Phone: +31 (0)40 254 95 31
Email: info@glsciences.eu
Web: www.glsciences.eu

GL Sciences, Inc. USA

4733 Torrance Blvd. Suite 255
Torrance, CA 90503
Phone: 310-265-4424
Fax: 310-265-4425
Email: info@glsciencesinc.com
Web: www.glsciencesinc.com

GL Sciences (ShangHai) Ltd.

Tower B, Room 2003,
Far East International Plaza,
NO,317 Xianxia Road,
Changning District.
Shanghai, China P.C. 200032
Phone: +86 (0)21-6278-2272
Email: contact@glsciences.com.cn
Web: www.glsciences.com.cn

International Distributors

Visit our Website at www.glsciences.com/distributors