



**Linoleum** Sheet

# **marmoleum**<sup>®</sup> solid

walton | concrete | cocoa | piano



creating better environments

### **Marmoleum Decibel to order**

All Marmoleum Solid colours  
can be ordered in a 3.5 mm  
Marmoleum Decibel  
construction.  
Contact sales support  
for more information.

### **Marmoleum Decibel from stock**

Scan the QR code to view  
Marmoleum Decibel  
ex-factory and locally  
stocked items.





**marmoleum® solid**

---

***Connect with Modern Nature***

Discover a harmonious connection with modern nature through Marmoleum Solid, a climate positive flooring that fosters your well-being. Crafted from natural raw materials, this collection is designed to elevate any space with its refined aesthetics.

The balanced colour palette effortlessly blends with contemporary trends while remaining true to its natural essence. Marmoleum Solid enhances any interior, making the surroundings the hero for many years to come.

*The story of nature is in our genes!*

# Step into Modern Nature

---

Nature's story unfolds with Marmoleum Solid. This well-curated palette empowers architects and interior designers to make limitless combinations within the collection but also with other interior materials.

Marmoleum Solid is your reliable partner for creating a modern and balanced spatial design with a natural and calming feel.

## MODERN NATURE

- Up to 98% natural raw materials
- Climate positive without offsetting
- Circular ready and PVC free
- GECA and LBC Red List Free
- Achieves "Best Practice" for responsible finishes in Green Star projects

## MODERN DESIGN

- Contemporary natural palette with muted and neutral tones
- Connecting effortlessly with other interior materials
- Crafted with your wellbeing in mind

## MODERN USAGE

- Designed to last with the Topshield pro surface finish
- Easy to clean and maintain: a 'ready to use' floor that doesn't require an initial polymer or sealer application
- Naturally bacteriostatic and hygienic with anti-viral properties
- Asthma and allergy approved



**marmoleum**<sup>®</sup>  
climate positive  
CRADLE TO GATE





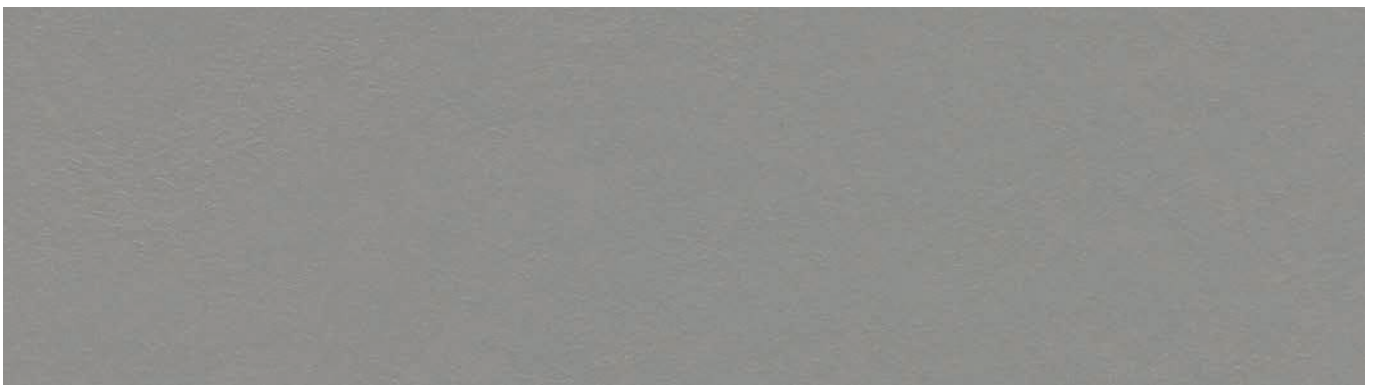








3378 | stucco



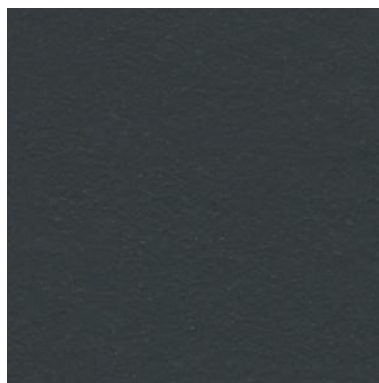
3367 | alloy

LRV 25%  
NCS S 5500-N



3323 | black

LRV 4%  
NCS S 9000-N



3374 | cobalt grey

LRV 7%  
NCS S 8005-B20G



3375 | grey adobe

LRV 17%  
NCS S 6502-Y





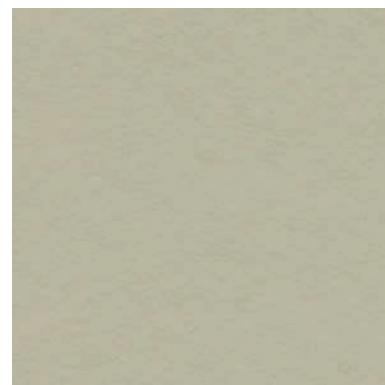
2.5 mm



**3371** | cement LRV 30%  
NCS S 4502-Y



**3369** | titanium LRV 48%  
NCS S 2502-Y



**3378** | stucco LRV 43%  
NCS S 3005-Y20R



**3355** | rosemary green LRV 21%  
NCS S 5010-G70Y



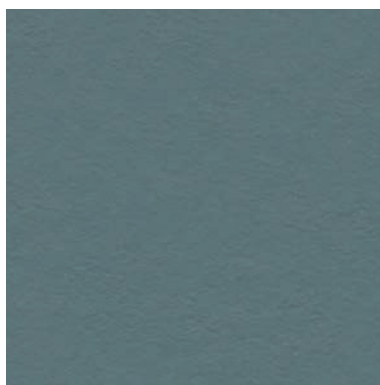
**3360** | vintage blue LRV 29%  
NCS S 3020-B



**3370** | terracotta LRV 18%  
NCS S 5030-Y40R



**3376** | peat LRV 11%  
NCS S 7502-Y



**3377** | North Sea blue LRV 18%  
NCS S 6010-B10G



**3352** | Berlin red LRV 10%  
NCS S 4050-Y80R



**3359** | bottle green LRV 7%  
NCS S 8010-G30Y



**3358** | petrol LRV 9%  
NCS S 7020-B10G

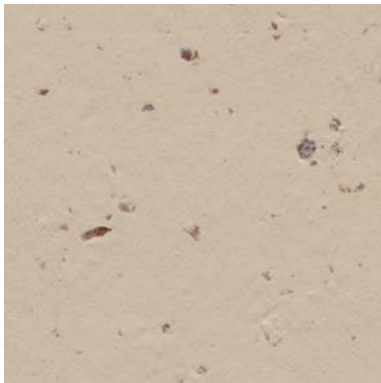


**3353** | eggplant purple LRV 8%  
NCS S 8005-Y80R



**3588** | eucalyptus

LRV 31%  
NCS S 3005-G50Y



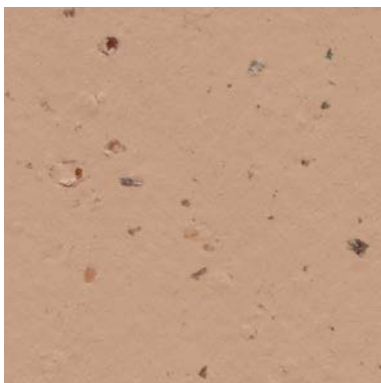
**3590** | meringue LRV 51%  
NCS S 2005-Y40R



**3582** | earl grey chocolate LRV 33%  
NCS S 3502-B



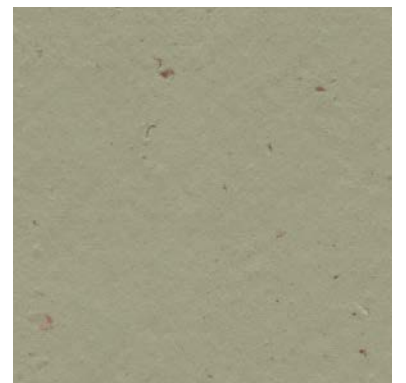
**3584** | white chocolate LRV 60%  
NCS S 2010-Y



**3592** | salted caramel LRV 32%  
NCS S 3020-Y40R



**3586** | indigo milk LRV 23%  
NCS S 4010-R90B



**3593** | matcha LRV 31%  
NCS S 4010-G70Y



**3580** | milk chocolate LRV 20%  
NCS S 6005-Y50R



**3583** | chocolate blues LRV 9%  
NCS S 7005-R80B



**3589** | nori LRV 25%  
NCS S 5000-N

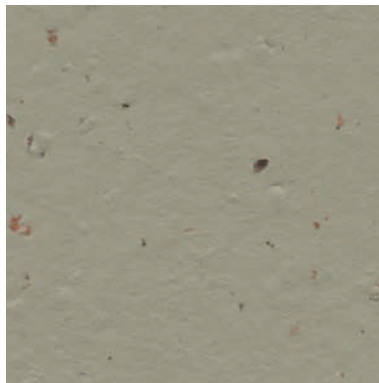




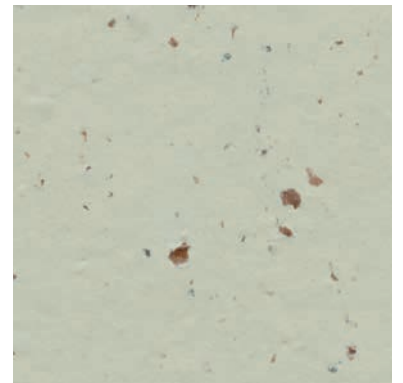
3593 | matcha



3595 | panna cotta LRV 28%  
NCS S 5005-Y20R



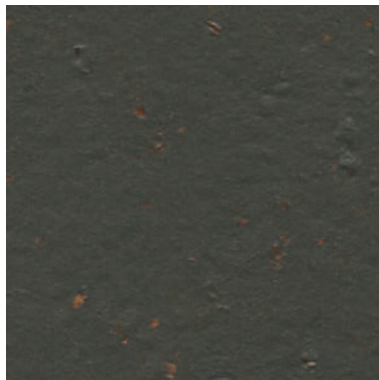
3596 | hummus LRV 41%  
NCS S 3010-G90Y



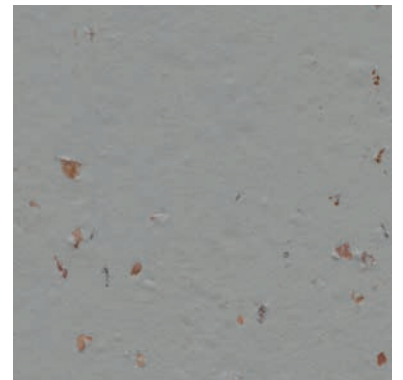
3585 | stracciatella LRV 47%  
NCS S 2010-G60Y



3587 | curcuma LRV 34%  
NCS S 3030-Y10R

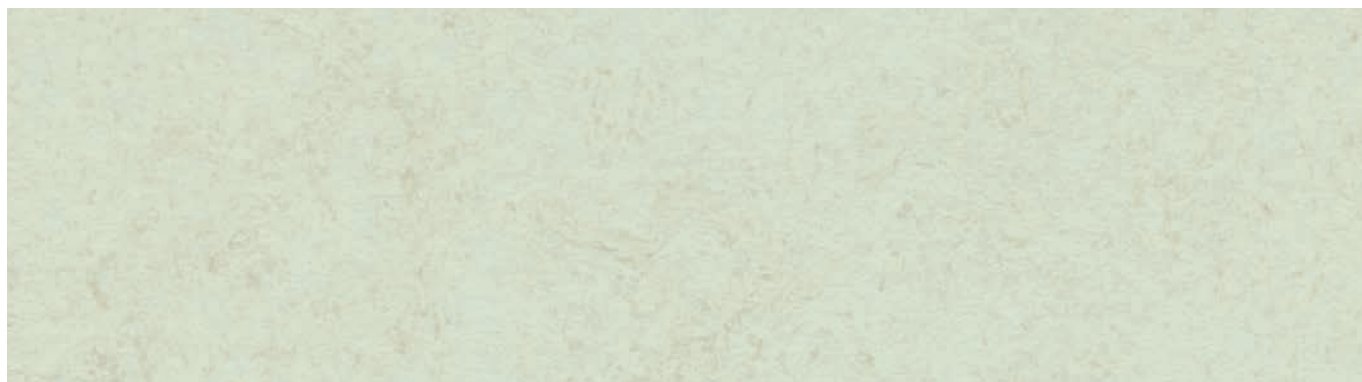


3591 | black tea LRV 9%  
NCS S 8000-N



3594 | chia seeds LRV 27%  
NCS S 5000-N





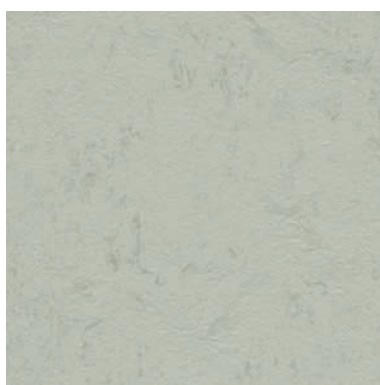
**3749** | Arctic

LRV 60%  
NCS S 1540-G40Y



**3750** | pine forest

LRV 31%  
NCS S 4010-G10Y



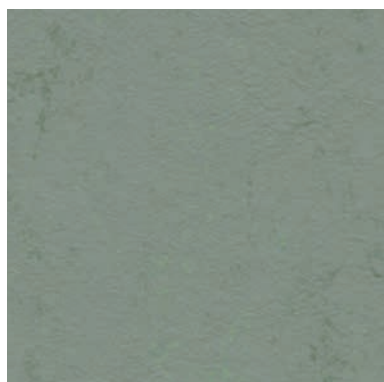
**3732** | asteroid

LRV 45%  
NCS S 3005-G20Y



**3755** | glacier

LRV 33%  
NCS S 4005-G20Y



**3751** | tundra

LRV 24%  
NCS S 5010-G30Y



**3753** | blue ice

LRV 30%  
NCS S 4010-B10G



**3756** | Neptune

LRV 18%  
NCS S 6005-B80G



**3752** | taiga

LRV 16%  
NCS S 6010-B70G



**3754** | Sirius

LRV 12%  
NCS S 6020-B10G



**3725** | cosmos

LRV 9%  
NCS S 7502-B



**3757** | Pluto

LRV 51%  
NCS S 2010-G70Y



**3724** | orbit

LRV 37%  
NCS S 3502-Y



**3758** | shale

LRV 41%  
NCS S 3010-G90Y



**3760** | dust

LRV 38%  
NCS S 3005-Y



**3704** | satellite

LRV 23%  
NCS S 5502-Y



**3759** | Mercury

LRV 28%  
NCS S 5005-Y20R



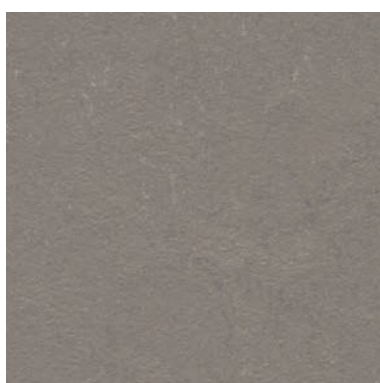
**3706** | beton

LRV 28%  
NCS S 5005-G80Y



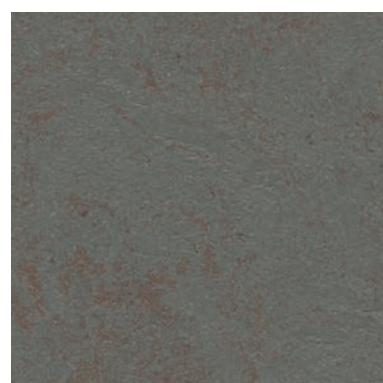
**3723** | nebula

LRV 17%  
NCS S 6500-N



**3702** | liquid clay

LRV 23%  
NCS S 5005-Y20R



**3703** | comet

LRV 14%  
NCS S 6502-G





3727 | drift 3709 | silt 5232 | rocky ice



3761 | Titan

LRV 41%  
NCS S 3010-Y



3727 | drift

LRV 31%  
NCS S 4010-Y10R



3762 | loam

LRV 20%  
NCS S 6005-G80Y



3708 | fossil

LRV 34%  
NCS S 4005-Y20R



3709 | silt

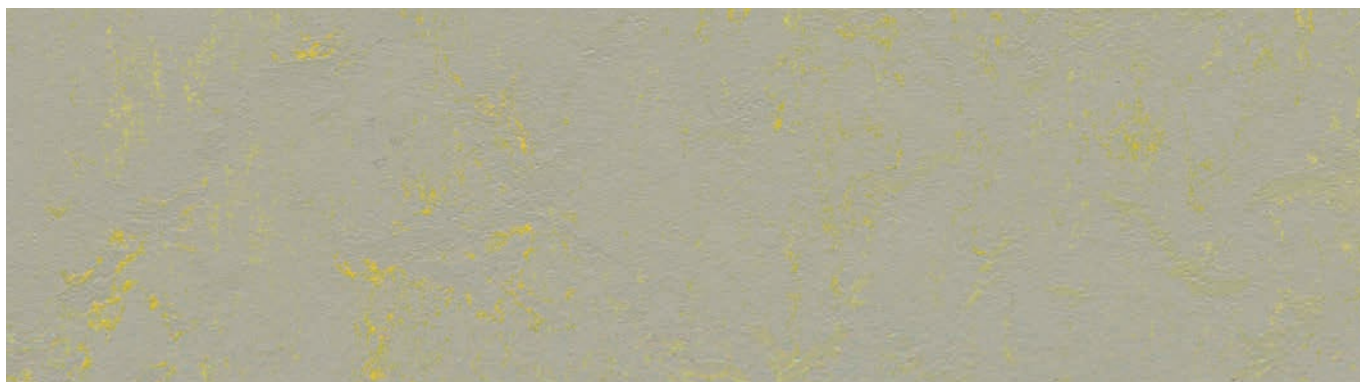
LRV 22%  
NCS S 5010-Y10R



3705 | meteorite

LRV 16%  
NCS S 6502-Y





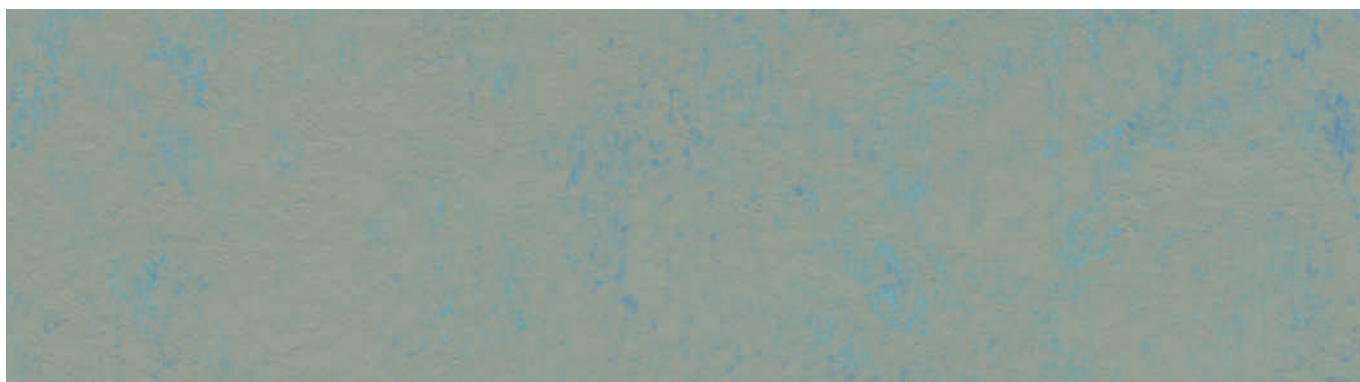
**3733** | yellow shimmer

LRV 42%  
NCS S 3010-G60Y



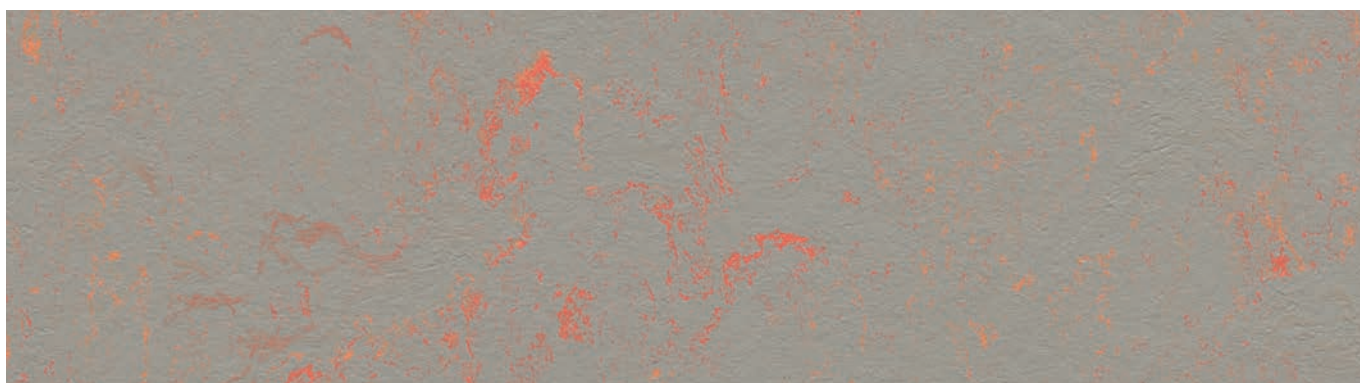
**3736** | green shimmer

LRV 32%  
NCS S 4005-G50Y



**3763** | blue shimmer

LRV 29%  
NCS S 4005-G



**3712** | orange shimmer

LRV 31%  
NCS S 4502-Y / 1050-Y50R



**3650** | polar bear LRV 59%  
NCS S 1505-G80Y



**3630** | angora LRV 37%  
NCS S 4010-Y10R



**3631** | otter LRV 20%  
NCS S 6005-Y20R



**3629** | frosty grey LRV 49%  
NCS S 2005-G50Y



**3601** | warm grey LRV 32%  
NCS S 3005-G50Y



**3634** | meadow LRV 43%  
NCS S 2030-G80Y



**3642** | periwinkle LRV 24%  
NCS S 4020-B



**3607** | grey dusk LRV 11%  
NCS S 7500-N



**3647** | nettle green LRV 24%  
NCS S 3040-G20Y



**3645** | Neptune blue LRV 15%  
NCS S 4040-B















# Technical specifications

		Marmoleum 2.5 mm Walton/ Concrete/ Piano/ Cocoa	Marmoleum Decibel Walton/ Concrete/ Piano/ Cocoa
Meets the requirements of		EN ISO 24011	EN 686
Total thickness	EN ISO 24346	2.5 mm	3.5 mm
Surface finish		Topshield pro	Topshield pro
Collection size		72	72
Domestic use	EN ISO 10874	Class 23	Class 23
Commercial use	EN ISO 10874	Class 34	Class 33
Light industrial use	EN ISO 10874	Class 43	Class 41
Roll width	EN ISO 24341	2.0 m	1.95 m / 2.0 m
Roll length	EN ISO 24341	≤ 33 m	≤ 33 m
Total weight	EN ISO 23997	2900 g/m <sup>2</sup>	3100 g/m <sup>2</sup>
Castor chair continuous use	ISO 4918	Pass	Pass
Residual indentation <i>Typical value</i>	EN ISO 24343-1	≤ 0.15 mm ~ 0.08 mm	≤ 0.30 mm ~ 0.20 mm
Colour fastness to light	EN ISO 105-B02 method 3	≥ 6	≥ 6
Indoor air emissions: TVOC after 28 days	EN 16516	≤ 0,01 mg/m <sup>3</sup>	≤ 0,05 mg/m <sup>3</sup>
Bacteriostatic properties <sup>(1)</sup>		Marmoleum has natural bacteriostatic properties which are confirmed by independent laboratories, even against MRSA bacteria.	
Resistance to chemicals	EN ISO 26987	Resistant to diluted acids, oils, fats and conventional solvents. Not resistant to prolonged exposure to alkalis.	
Cigarette resistance	EN 1399	There is no melting of the surface by cigarettes. Marks left on Marmoleum as a result of stubbed-out cigarettes can be removed.	
Flexibility	EN-ISO 24344	ø 40 mm	ø 40 mm
Acoustical impact noise reduction	EN ISO 717-2	≤ 5 dB	≥ 18 dB
<b>Creating better environments</b>		Life Cycle Assessment is the foundation for securing the lowest environmental impact. Marmoleum is climate positive cradle to gate <sup>(2)</sup>	
Natural materials		Marmoleum is a biobased floor made with up to 98 % natural ingredients (e.g. linseed oil, rosin, wood flour, jute and cocoa husks). Marmoleum contains PEFC certified wood flour. Marmoleum is free of PVC, PET, synthetic rubber and plasticizers.	
Recycled content		Marmoleum contains ingredients derived from recycled sources, which are a combination of post-industrial, post-installation and post-consumer streams for both flooring and non-flooring Marmoleum products. Marmoleum sheet installation off-cuts and post-consumer used flooring are recyclable.	
Health and safety		Marmoleum is REACH compliant to assure human safety and health.	
Renewable electricity		Marmoleum is manufactured using 100% electricity from renewable sources.	
Green building certifications		Application of Marmoleum 2.5 mm sheet can help maximise contribution in green building certifications e.g. LEED, BREEAM, DGNB and WELL.	
GBCA Green Star rating system		Application of Marmoleum 2.5 mm meets GBCA Best Practice products (RPV ≥ 12) with the combination of GECA/ Red List free certification and product specific EPD.	
Application for underfloor heating		yes	
Meets the requirements of		EN 14041:2004	EN 14041:2004
DoP		0100201-DoP-107	0100207-DoP-107
Reaction to fire (floor)	AS ISO 9239.1	CHF: 6.6 kW/m <sup>2</sup> , Smoke: 112%.min	>4.5 kW/m <sup>2</sup> , Smoke: <750%.min
Reaction to fire (wall)	AS 5637.1	Group 3 (172 m <sup>2</sup> /kg)	-
Slip resistance	AS 4586:2013	R10, P3 <sup>(3)</sup>	R10, P3 <sup>(3)</sup>
Thermal conductivity	EN 12524	0.17 W/mK	0.17 W/mK
Body voltage	EN 1815	≤ 2.0 kV	≤ 2.0 kV

<sup>(1)</sup> Marmoleum sheet can be installed nett fit, or with a welding rod in the seam. Both are proven hygienic solutions.

<sup>(2)</sup> For details, please consult the EPD for Marmoleum 4790690881.101.1

<sup>(3)</sup> Slip rating results are based on independent laboratory testing on a new sample. On-site testing results can often be highly variable due to site-specific conditions. Forbo cannot be held liable for site conditions and the variability in test results. For sustainable slip resistance in wet environments, a particle-based enhanced safety floor in accordance with EN 13845 should be used.

All Forbo Flooring Systems' sales organisations worldwide have a certified Quality Management System in accordance with ISO 9001. All Forbo Flooring Systems' manufacturing operations have a certified Environmental Management System in accordance with ISO 14001. The Life Cycle Assessment (LCA) of Forbo Flooring Systems' products is documented in individual Environmental Product Declarations (EPD's) which can be found on all of our websites.



Find us on



**New Zealand**  
Inzide Commercial Ltd  
Level 2, 34 Barrys Point Road  
Takapuna Auckland 0622  
Tel: +64 9 441 9850  
Fax: +64 9 441 9851  
www.inzide.co.nz  
sales@inzide.co.nz

**Australia**  
Forbo Flooring Systems Pty Ltd  
23 Ormsby Place  
Wetherill Park NSW 2164  
Tel: +61 2 9828 0200  
Fax: +61 2 9725 3456  
E-mail: info.au@forbo.com  
www.forbo-flooring.com.au



FLOORING SYSTEMS

creating better environments