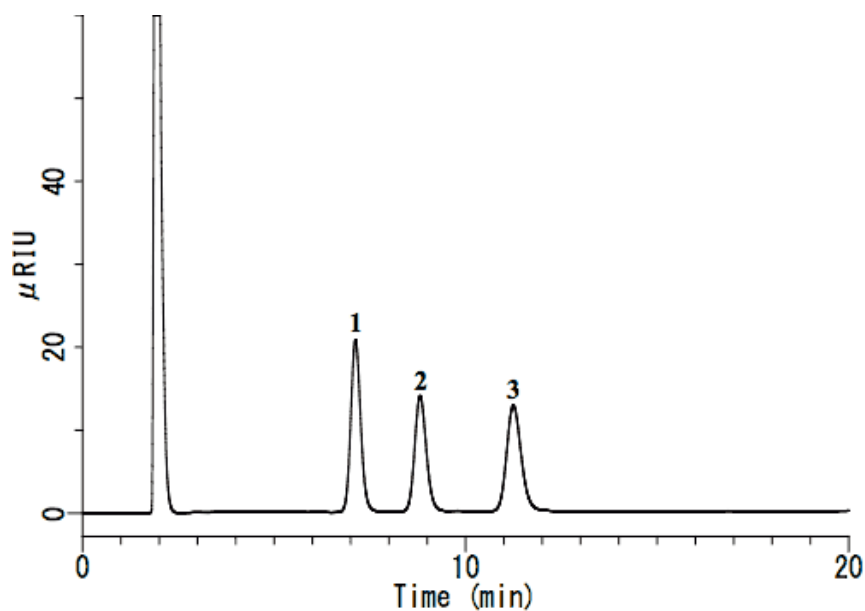


InertSearch™ for LC

Inertsil® Applications

Analysis of Cyclodextrins

Data No. LA521-0696



System : GL-7400 system

Column : Inertsil NH2 (5 μ m, 150 \times 4.6 mm I.D.)

Column Cat. No. :

Eluent : A) CH₃CN

B) H₂O

A/B = 65/35, v/v

Flow rate : 1.0 mL/min

Col. Temp. : 40 °C

Detection : RI (GL-7454 RI detector)

Injection Vol. : 20 μ L

Sample : Cyclodextrins

Solutes : 1. α -Cyclodextrin (2000 mg/L)

2. β -Cyclodextrin (2000 mg/L)

3. γ -Cyclodextrin(2000 mg/L)