

Pure Waste[®]

Pre-Order Catalog

2024





Your Sustainable Apparel Supplier

The catalog represents a curated sustainable fashion collection, an array of apparel styles, colors, and fabrics tailored for the forward-thinking client. It's an invitation to select and personalize apparel that aligns with your future sustainable business and clientele needs.

Our pre-order system is uniquely designed to fulfill upcoming trends, making it easy and helpful for you to order accordingly. This approach ensures that what we produce aligns precisely with market demands, reflecting our commitment to minimizing waste and maximizing efficiency. By choosing from this catalog, you directly influence the production process, guaranteeing that every garment we create is both wanted and valued.

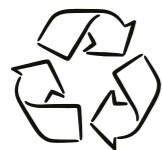
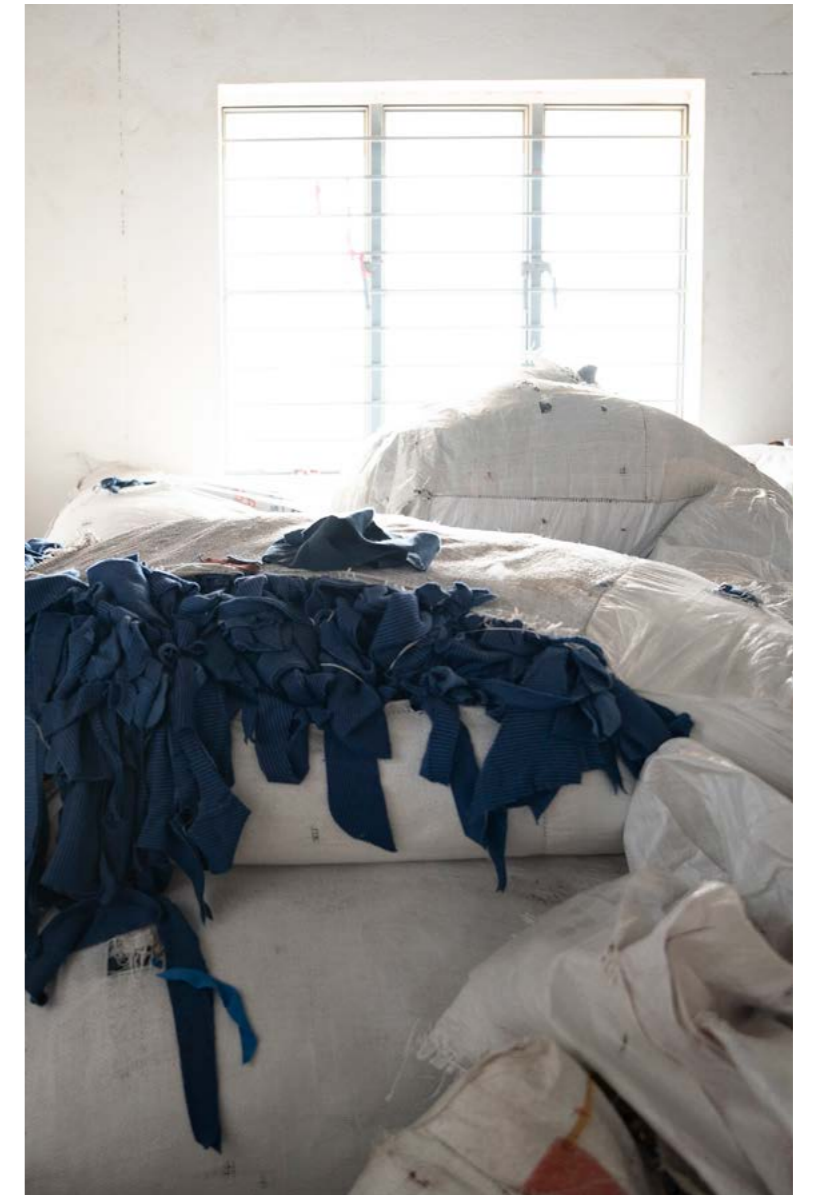
By selecting from this catalog, you're not just ordering apparel but joining a movement of conscious consumption and sustainable practices. Please make your selections, and let's collaboratively pave the way towards a more sustainable and fashion-forward future for your business.

Revolutionizing Textiles with Sustainability at Heart

We've been redefining the textile industry with our commitment to sustainability since 2013. We are a Finnish company focused on creating garments entirely from 100% recycled fibers, free from dyes. Our innovative approach significantly reduces environmental impact, utilizing 99% less water and producing 50% fewer CO2 emissions compared to conventional garments made from virgin materials.

We mechanically recycle, cutting waste and discarded garments into premium textiles, offering the same quality, comfort, and competitive pricing as fresh materials. This process underscores our dedication to ethical manufacturing and environmental responsibility.

With Pure Waste, you're choosing more than just apparel; you're joining a movement toward a greener, more sustainable future. We're committed to delivering quality and comfort, proving that eco-friendly fashion doesn't mean compromising on style or values.



**100% Recycled
Fibers**



99% Less H2O



55% Less CO2

Table of Content

T-Shirts

Loose Fit T-Shirt	6
Oversize Long Sleeve T-shirt	7
Women's Boxy T-Shirt	8

Hoodies and Sweatshirts

Loose Fit Sweatshirt	10
Loose Fit Hoodie	11
Loose Fit Kangaroo Pocket Hoodie	12
Half Zip Sweatshirt	13

Pants

Loose Fit Sweatpants	15
Pin-tuck Pants	16
Loose Fit Shorts	17

Accessories

Waffle Knit Beanie	19
Rib Beanie	20
Tote Bag, Classic	21
Tote Bag, Big	22

Recycling process	23
-------------------	----

By Choosing Pure Waste	24
------------------------	----

References	25
------------	----

Contact us	26
------------	----





Loose Fit T-Shirt, Black

The relaxed and loose unisex Pure Waste T-shirt suits everyone.
Product's carbon footprint 1.1 kg.
Product's water footprint 1.2 l.
Water saved 1,425 l

Oversize Long Sleeve T-shirt, White

Thanks to its unisex cut, this relaxed and loose long-sleeved T-shirt is perfect for an office.
Product's carbon footprint 1.4 kg
Product's water footprint 1.5 l
Water saved 1,746 l

T-Shirts



Loose Fit T-Shirt

This loose fit T-shirt is designed to last and made of 100% recycled fibres -a mix of cotton and recycled plastic bottles. The crew neckline is finished with a wide rib, and the fit is relaxed and roomy. This unisex T-shirt is sold using men's measurements. Meaning that for men, our sizing is true to size, but our clothing will have a more relaxed fit for women.

Material
 180 g Single Jersey
 60 % recycled cotton
 40 % recycled polyester

The positive environmental impact of this product
 1425 litres of H2O saved
 1,0 kg CO2e reduced

	XXS	XS	S	M	L	XL	XXL	3XL	4XL
Chest	92	98	104	110	116	122	244	134	140
Hem	92	98	104	110	116	122	128	134	140
Body length	65	68	71	73	74	76	77	79	80
Sleeve length	23	24	25	26	26	27	27	28	28

Colors



Berry Melange
LFTS38



Khaki Green
LFTS77



Post Waste Blue
LFTS63



Solid Navy
LFTS68



White
LFTS00



Ecru
LFTS01



Grey Melange
LFTS92



Anthracite
LFTS95



Black
LFTS99



Oversize Long Sleeve T-shirt

The Pure Waste oversize long sleeve t-shirt is made of 100% recycled fibres -a mix of cotton and recycled plastic bottles. This relaxed fitted long sleeve is designed to last and comes with a straight cut and dropped shoulders. The sleeves and neckline are finished with ribs. This unisex long sleeve is sold using men's measurements. Meaning that for men, our sizing is true to size, but our clothing will have a more relaxed fit for women.

Material
 180 g Single jersey
 60 % recycled cotton
 40 % recycled polyester

The positive environmental impact of this product
 1746 litres of H2O saved
 1,2 kg CO2e reduced

	XXS	XS	S	M	L	XL	XXL	3XL	4XL
Chest	106	112	118	124	130	136	142	147	152
Hem	98	104	110	116	122	128	134	136	138
Body lenght	65	67	69	71	73	75	77	78	79
Sleeve lenght	56	58	60	62	64	66	68	69	69

Colors



Berry Melange
OSLS38



Khaki Green
OSLS77



Post Waste Blue
OSLS63



Solid Navy
OSLS68



White
OSLS00



Ecru
OSLS01



Grey Melange
OSLS92



Anthracite
OSLS95



Black
OSLS99



Women's Boxy Top

A top that suites any occasion. The shirt has a classy vibe for fancier events, but it's also perfect for relaxing outdoor days. Flowy sleeves and a slightly curved hem are the significant details in this style. The shirt is single jersey fabric made of 100 % recycled fibres.

Material
 180 g Single Jersey
 60 % recycled cotton
 40 % recycled polyester

The positive environmental impact of this product
 1425 litres of H2O saved
 1,0 kg CO2e reduced

	XXS	XS	S	M	L	XL	XXL
Chest	96	102	108	114	120	126	132
Hem	92	98	104	110	116	122	128
Body lenght	54	57	60	62	63	65	66

Colors



Berry Melange
WBT38



Khaki Green
WBT77



Post Waste Blue
WBT63



Solid Navy
WBT68



White
WBT00



Ecru
WBT01



Grey Melange
WBT92



Anthracite
WBT95



Black
WBT99



Loose Fit Hoodie

Hoodie has drop shoulders, a straight cut, and a generously sized hood.
Product's carbon footprint 3.3 kg.
Product's water footprint 3.7 l.
Water saved 4275 l.

Loose Fit Sweatshirt

This loose fit sweatshirt is a new loyal garment for your wardrobe
Product's carbon footprint 2.5 kg.
Product's water footprint 2.8 l.
Water saved 3171 l.

Hoodies and Sweatshirts



Loose Fit Sweatshirt

This loose fit sweatshirt is a new loyal garment for your wardrobe, with drop shoulders, a straight cut, and a crew neckline. It is made of 100% recycled fibres, a soft knitted fabric. The neck opening, sleeves, and hem are finished with ribbed trims. This unisex sweatshirt is sold using men's measurements. Meaning that for men, our sizing is true to size, but our clothing will have a more relaxed fit for women.

Material

280 g Brushed or unbrushed fleece
60 % recycled cotton
40 % recycled polyester

The positive environmental impact of this product

3171 litres of H2O saved
2,2 kg CO2e reduced

	XXS	XS	S	M	L	XL	XXL	3XL	4XL
Chest	106	112	118	124	130	136	142	147	152
Hem	98	104	110	116	122	128	134	136	138
Body length	65	67	69	71	73	75	77	78	79
Sleeve length	56	58	60	62	64	66	68	69	69

Colors



Berry Melange
LFSW38



Khaki Green
LFSW77



Post Waste Blue
LFSW63



Solid Navy
LFSW68



White
LFSW00



Ecru
LFSW01



Grey Melange
LFSW92



Anthracite
LFSW95



Black
LFSW99



Loose Fit Hoodie

Our dress-to-chill or go-to hoodie is made of 100% recycled fibres -a mix of cotton and recycled plastic bottles. The inside is soft, brushed knitted fabric. This over-the-head style hoodie has drop shoulders, a straight cut, and a generously sized hood with drawstrings. The oversized hoodie's hem and sleeve openings are ribbed. This unisex T-shirt is sold using men's measurements. Meaning that for men, our sizing is true to size, but our clothing will have a more relaxed fit for women.

Material

280 g Brushed or unbrushed fleece
60 % recycled cotton
40 % recycled polyester

The positive environmental impact of this product

3812 litres of H2O saved
2,6 kg CO2e reduced

	XXS	XS	S	M	L	XL	XXL	3XL	4XL
Chest	106	112	118	124	130	136	142	147	152
Hem	98	104	110	116	122	128	134	136	138
Body length	65	67	69	71	73	75	77	78	79
Sleeve length	56	58	60	62	64	66	68	69	69

Colors



Berry Melange
LFHD38



Khaki Green
LFHD77



Post Waste Blue
LFHD63



Solid Navy
LFHD68



White
LFHD00



Ecru
LFHD01



Grey Melange
LFHD92



Anthracite
LFHD95



Black
LFHD99



Loose Fit Kangaroo Pocket Hoodie

Kangaroo pocket hoodie is made of 100% recycled fibres -a mix of cotton and recycled plastic bottles. The inside is soft, brushed knitted fabric.

Material

280 g Brushed or unbrushed fleece
60 % recycled cotton
40 % recycled polyester

This over-the-head style hoodie has drop shoulders, a straight cut, and a generously sized hood with drawstrings. The oversized hoodie's hem and sleeve openings are ribbed. This unisex T-shirt is sold using men's measurements.

The positive environmental impact of this product

3812 litres of H2O saved
2,6 kg CO2e reduced

	XXS	XS	S	M	L	XL	XXL	3XL	4XL
Chest	106	112	118	124	130	136	142	147	152
Hem	98	104	110	116	122	128	134	136	138
Body lenght	65	67	69	71	73	75	77	78	79
Sleeve lenght	56	58	60	62	64	66	68	69	69

Colors



Berry Melange
LFKH38



Khaki Green
LFKH77



Post Waste Blue
LFKH63



Solid Navy
LFKH68



White
LFKH00



Ecru
LFKH01



Grey Melange
LFKH92



Anthracite
LFKH95



Black
LFKH99



Half Zip Sweatshirt

This Half-zip sweatshirt is perfect for adventures. It has drop shoulders, a comfy oversize fit, a high collar, and half zip fastening, and the sleeves and the hem are finished with ribbed trims. The 100% recycled material is a soft fleece. This unisex style is sold using men's measurements. Meaning that for men, our sizing is true to size, but our clothing will have a more relaxed fit for women.

Material

280 g Brushed or unbrushed fleece
60 % recycled cotton
40 % recycled polyester

The positive environmental impact of this product

3171 litres of H2O saved
2,2 kg CO2e reduced

	XXS	XS	S	M	L	XL	XXL	3XL	4XL
Chest	106	112	118	124	130	136	142	147	152
Hem	98	104	110	116	122	128	134	136	138
Body lenght	65	67	69	71	73	75	77	78	79
Sleeve lenght	56	58	60	62	64	66	68	69	69

Colors



Berry Melange
HZSW8



Khaki Green
HZSW77



Post Waste Blue
HZSW68



Solid Navy
HZSW68



White
HZSW00



Ecru
HZSW01



Grey Melange
HZSW92



Anthracite
HZSW95



Black
HZSW99



Loose Fit Sweatpants

The pants feature slanted side pockets and one open back pocket.
Product's carbon footprint 2.3 kg.
Product's water footprint 2.5 l.
Water saved 2921 l.

Pants



Loose Fit Sweatpants

These soft and relaxed loose Pure Waste unisex sweatpant model is sold using men's measurements, and women should choose one size smaller than usual.

The pants feature slanted side pockets and one open back pocket. The waistband is easily adjustable with a drawstring made from leftover knitting machine yarn.

Material

280 g brushed or unbrushed fleece
60 % recycled cotton
40 % recycled polyester

The positive environmental impact of this product

2921 litres of H2O saved
2 kg CO2e reduced

	XS	S	M	L	XL	XXL
Waist	86	92	98	104	110	116
Hip	102	108	114	120	126	132
Thigh	31	32	34	35	37	38
Inseam	70	71	73	74	76	76

Colors



Berry Melange
LFSP38



Khaki Green
LFSP77



Post Waste Blue
LFSP63



Solid Navy
LFSP68



White
LFSP00



Ecru
LFSP01



Grey Melange
LFSP92



Anthracite
LFSP95



Black
LFSP99



Pin-tuck Pants

The straight-leg sweatpants are a perfect everyday garment with a relaxed feel and neat look.

The sweatpants' legs have been turned up and feature a stitched front seam. The pants feature slanted side pockets and one open back pocket. The waistband is easily adjustable with a drawstring made from leftover knitting machine yarn.

Material

280 g brushed or unbrushed fleece
60 % recycled cotton
40 % recycled polyester

The positive environmental impact of this product

2921 litres of H2O saved
2,0 kg CO2e reduced

	XS	S	M	L	XL	XXL
Waist	86	92	98	104	110	116
Hip	102	108	114	120	126	132
Thigh	62	65	68	71	74	77
Inseam	62	64	65	67	68	68

Colors



Berry Melange
PTSP38



Khaki Green
PTSP77



Post Waste Blue
PTSP63



Solid Navy
PTSP8



White
PTSP00



Ecru
PTSP01



Grey Melange
PTSP92



Anthracite
PTSP95



Black
PTSP99



Loose Fit Shorts

These soft and relaxed Pure Waste sweat shorts suit the gym and the sofa.

The shorts feature slanted side pockets and one open back pocket. The waistband is easily adjustable with a drawstring made from leftover knitting machine yarn. 100% recycled material is a soft fleece. This style is using men's measurements.

Material

280 g brushed or unbrushed fleece
60 % recycled cotton
40 % recycled polyester

The positive environmental impact of this product

1959 litres of H2O saved
1,3 kg CO2e reduced

	XS	S	M	L	XL	XXL
Waist	86	92	98	100	106	112
Hip	98	104	110	110	116	122
Thigh	62	65	68	71	74	77
Inseam	16	17	19	20	21	22

Colors



Berry Melange
LFSH38



Khaki Green
LFSH77



Post Waste Blue
LFSH63



Solid Navy
LFSH68



White
LFSH00



Ecru
LFSH01



Grey Melange
LFSH92



Anthracite
LFSH95



Black
LFSH99



Tote Bag, Solid Navy

This Classic style tote bag saves 677 litres of fresh water compared to a bag made of virgin material!

Product's carbon footprint 0.5 kg.

Product's water footprint 0.6 l.

Water saved 667 l.

Accessories



Waffle Knit Beanie

A light waffle knit beanie covers the ears and is suitable for all.

Material
60 % recycled cotton
40 % recycled polyester

The positive environmental impact of this product
784 litres of H₂O saved
0,5 CO₂e reduced

Colors



Grey Melange
WKB92



Anthracite
WKB95



Black
WKB99



Solid Navy
WKB68



Rib Beanie

You can use the classic rib-knit beanie to cover the ears or the fold rolled narrow to give it a Cousteau style! This beanie suits all!

Material
60 % recycled cotton
40 % recycled polyester

The positive environmental impact of this product
819 litres of H2O saved
0,6 CO2e reduced

Colors



Grey Melange
RBE92



Anthracite
RBE95



Black
RBE99



Solid Navy
RBE68



Tote Bag, Classic

The Classic tote bag with long handles is made from recycled cotton and recycled plastic bottles.

Size: 41 x 45 cm.

Material

135g Plain weave
60 % recycled cotton
40 % recycled polyester

The positive environmental impact of this product

677 litres of H₂O saved
0,5 CO₂e reduced

Colors



Ecu
SB01



Grey Melange
SB92



Black
SB99



Solid Navy
SB68



Tote Bag, Big

A bigger tote bag works better when it is made of a heavier plain weave—a perfect companion to everyday life with short and long handles.

Size: 45 x 45 x 8 cm.

Material

210g Oxford weave
60 % recycled cotton
40 % recycled polyester

The positive environmental impact of this product

1425 litres of H₂O saved
1,0 kg CO₂e reduced

Colors



Ecru
TBL01



Grey Melange
TBL92



Black
TBL99

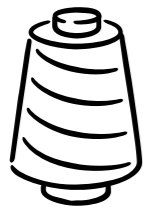
Recycling process



Our journey begins with 100% recycled fibers: a sustainable mix of cotton-cutting waste and recycled PET polyester from plastic bottles, setting the stage for eco-friendly fabric production.



The cotton waste is sorted by color and mechanically opened back into fibers. These fibers are blended with recycled PET polyester, paving the way for the next step in the recycling process.

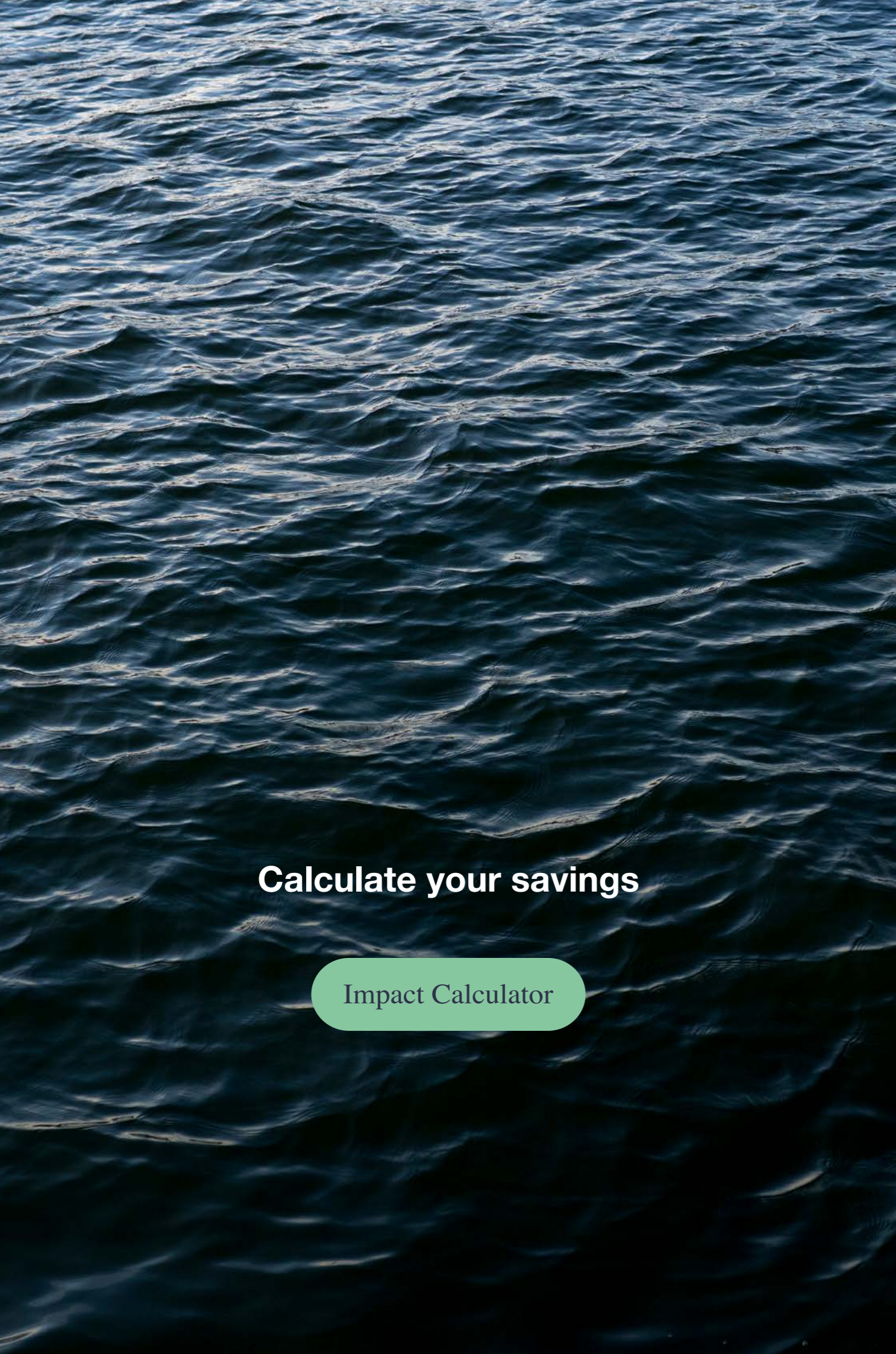


These recycled fibers are then spun into new yarns. By utilizing the inherent color of the recycled fibers, we eliminate the need for re-dyeing, maintaining the fabric's natural hue.



The final result is a range of sustainable and durable garments. Our process uses 99% less water and generates 50% fewer CO2 emissions than the production of similar products from virgin materials.





Calculate your savings

Impact Calculator

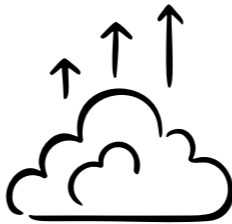
By Choosing Pure Waste



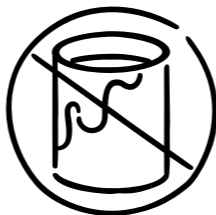
100% Recycled Fibers
Using recycled materials, we prevent virgin cotton farming and reduce landfill waste.



99% Less Water Used
Our process dramatically reduces water consumption, conserving vital resources.



50% Fewer Carbon Emissions
Our sustainable manufacturing significantly cuts down on greenhouse gases.



Free from Harmful Chemicals and Dyes
Our fabrics maintain their natural color, eliminating the need for chemical dyes and reducing pollution.

References



Musiikkitalo
Finland's leading concert hall, Musiikkitalo, celebrated its 10th anniversary with a shirt collection.

Suomen Luonnonsuojelun Tuki Ry
Suomen Luonnonsuojeluliitto, a champion of environmental conservation, proudly showcases its heritage with sweaters featuring their classic retro logo.

Suomen Pakolaisapu Ry
Suomen Pakolaisapu, is dedicated to aiding refugees. This collaboration combines compassionate messaging with sustainable fashion.

Slush
Since 2013, we've partnered with Slush, the premier global startup event, significantly conserving natural resources through our collaboration

Nepa
NEPRA, a trailblazer in Finnish sustainable activewear, collaborates to produce 'Nepa Lazywear' with a comfortable and eco-conscious design.

Kesärauha
We have partnered with the Kesärauha festival for years, and this collaboration is where Tomi Leppänen's unique designs come to life.

Lykke
Lykke Coffee, renowned for its ethical approach, engages fair-goers while sporting sweaters adorned with their vibrant, distinctive prints.

Vision Fly Fishing
Vision Group Oy, a Finnish fly fishing gear leader, collaborative efforts focus on conserving natural resources, particularly protecting wild salmon and trout stocks.

Contact us

Pure Waste Global Sales

sales@purewaste.com

+358 401 705 767

Läkkisepäntie 14, K-kerros

00620 Helsinki

Finland