

Stimulate
HAIRDESIGN



HITEC
HAIR

[de]

Einzigartig im Design, vielseitig im Styling. HiTec Hair ist eine innovative Faser aus hitzebeständigem Synthetikkaar. Das Haar lässt sich thermisch umformen und individuell anpassen. Ein Modell – unzählige Möglichkeiten. Entdecken Sie in diesem Katalog viele inspirierende Beispiele inklusive Styling-Tipps! Im Takt mit den Trends!

[en]

Unique in design, versatile in styling. HiTec Hair is an innovative fibre made of heat friendly synthetic hair. The hair can be thermally reshaped and individually customised. One model – countless possibilities. Discover many inspiring ideas including styling tips in this catalogue! In step with the trends!

[fr]

Unique en design, varié en stylings. HiTec Hair est une fibre de synthèse innovante résistante à la chaleur. La chevelure peut être thermoformée et individualisée. Un modèle – D'innombrables possibilités. Découvrez le catalogue avec de nombreux exemples inspirants y compris des astuces de coiffage ! Au rythme des tendances !

[it]

Unico nel design, versatile nello styling. HiTec è una fibra sintetica innovativa termoresistente. I capelli possono essere lavorati e acconciati con il calore, in base al gusto del cliente. Un modello – infinite possibilità. Si lasci ispirare scoprendo il nuovo catalogo, ricco di esempi e consigli. Sempre al passo con le nuove tendenze!

[es]

Un diseño único, un estilo versátil. El cabello HiTec es una innovadora fibra de cabello sintético resistente al calor. El cabello puede ser remodelado térmicamente y adaptado individualmente. Un modelo con innumerables posibilidades. ¡Descubre en este catálogo ejemplos inspiradores con consejos de peinados! ¡Al compás de las tendencias!

CREATE MULTIPLE STYLES





zumba in sandyblonde rooted



4



★★★★

tosca

mono part

espresso mix, darkchocolate mix,
chocolate rooted, bernstein rooted,
lightbernstein rooted, sandyblonde rooted,
candyblonde rooted, pearlblonde rooted,
pastelblonde rooted, cherryred mix,
gingerblonde rooted





tosca

mono part

in lightbernstein rooted

STYLING CRIMPED





★★★★“

bolero

mono part

espresso mix, darkchocolate mix,
chocolate rooted, **lightbernstein rooted**,
sandmulti rooted, sandyblonde rooted,
champagne rooted, rosewood rooted,
snow mix

10

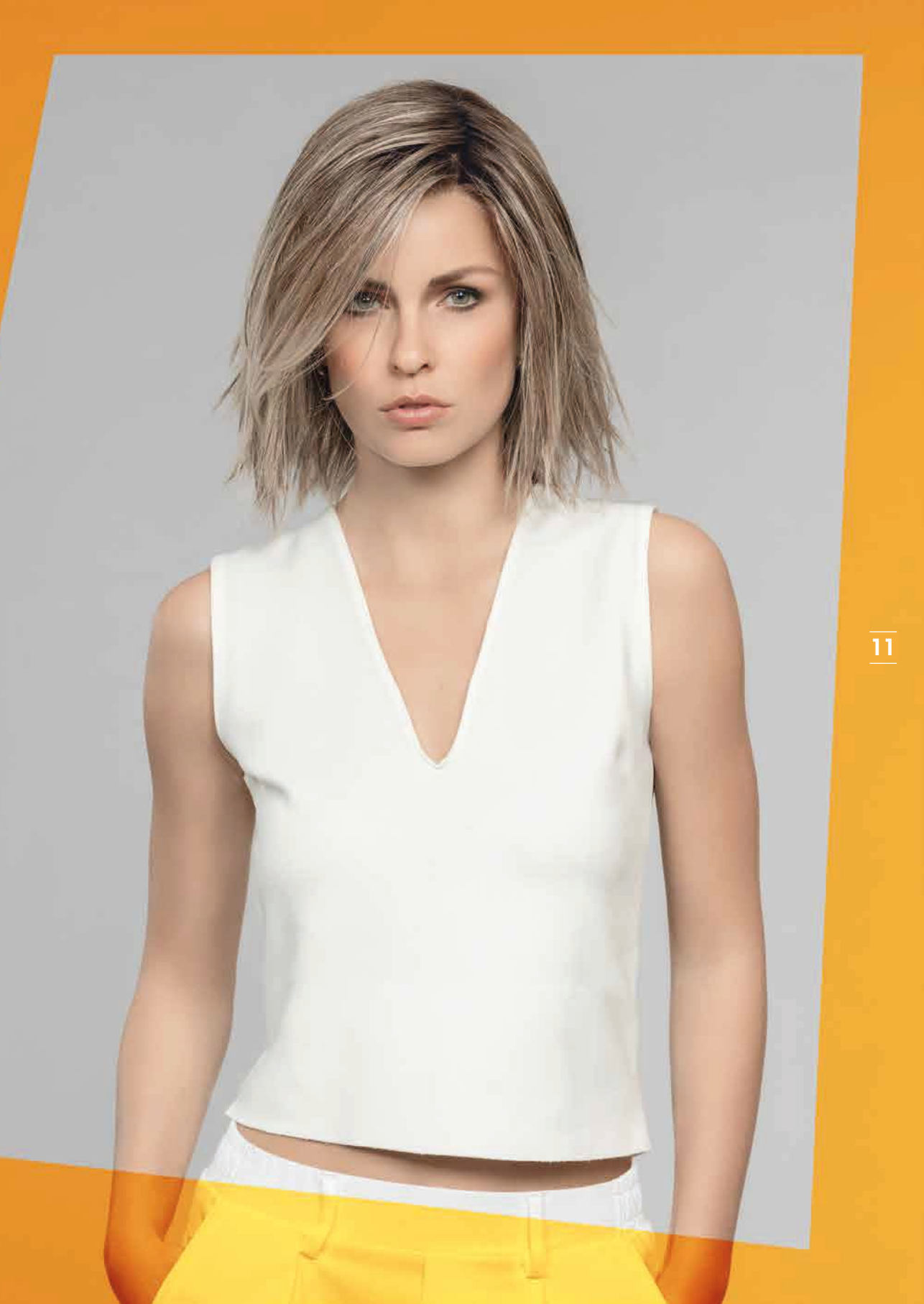


bolero

mono part

in sandmulti rooted

**STYLING
STRAIGHT**







★★★★★“
cassana hi
deluxe

espresso mix, darkchocolate rooted,
chocolate mix, mocca rooted,
lightbernstein rooted, sand mix,
sandyblonde rooted, champagne mix,
silverblonde rooted, pearl rooted



cassana hi
deluxe

in silverblonde rooted

STYLING



★★★★“

tango

mono part

espresso lighted, darkchocolate mix,
chocolate rooted, bernstein mix,
sandmulti rooted, sandyblonde mix,
champagne rooted, pastel rose rooted,
cherryred mix, salt/pepper mix,
snow mix



STYLING



tango
mono part
in champagne rooted

18





twist ^{★★★}

espresso mix, cinnamonbrown lighted, chocolate rooted, nougat rooted, lightbernstein rooted, **sand rooted**, sandyblonde rooted, pearlblonde rooted, lightchampagne rooted, salt/pepper mix, silver mix



STYLING STRAIGHT



twist

in sand rooted



aida ^{☆☆}

espresso mix, darkchocolate mix,
chocolate rooted, tobacco rooted,
sandmulti rooted, sandyblonde rooted,
champagne rooted, **metallicblonde rooted**,
blackcherry mix, auburn rooted,
pepper mix, snow mix

aida ^{☆☆} large

darkchocolate mix, chocolate rooted,
tobacco rooted, sandmulti rooted,
champagne rooted, **metallicblonde rooted**,
snow mix





STYLING





aida

in metallicblonde rooted





★★★★
boogie
mono part

espresso lighted, darkchocolate mix,
chocolate rooted, lightbernstein rooted,
sandyblonde rooted, **champagne rooted**,
pastel rose rooted, rosewood rooted,
salt/pepper mix, snow mix

STYLING WAVY



boogie
mono part
in lightbernstein rooted





★★★★

zumba

mono part

espresso mix, darkchocolate mix,
chocolate rooted, lightbernstein rooted,
sandyblonde rooted, champagne rooted,
pearl rooted, silver mix





STYLING STRAIGHT

zumba

mono part

in sandyblonde rooted



★★★ salsa

espresso mix, darkchocolate mix,
cinnamonbrown mix, chocolate rooted,
lightbernstein rooted,
sandyblonde rooted, champagne rooted,
pastel rose rooted, rosewood rooted





salsa
in champagne rooted

STYLING WAVY

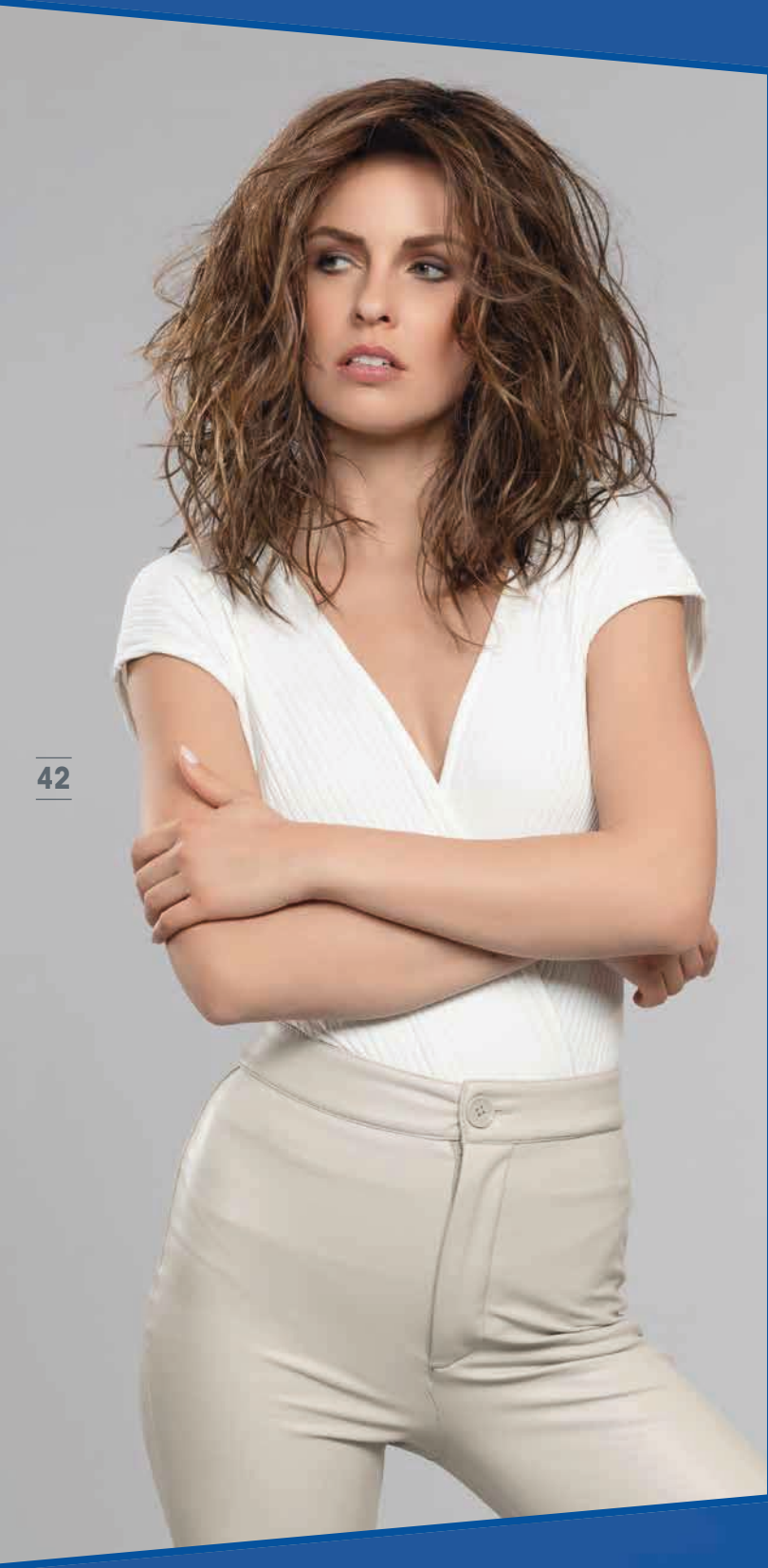






★★★
mambo

espresso tipped, **chocolate rooted**,
hazelnut rooted, lightbernstein rooted,
sandyblonde rooted, champagne rooted,
rosewood rooted



42

mambo

in chocolate rooted

**STYLING
WAVY**





★★★★★★

milonga

deluxe

espresso mix, darkchocolate mix,
chocolate rooted, mocca rooted,
lightbernstein rooted, sandyblonde mix,
champagne rooted



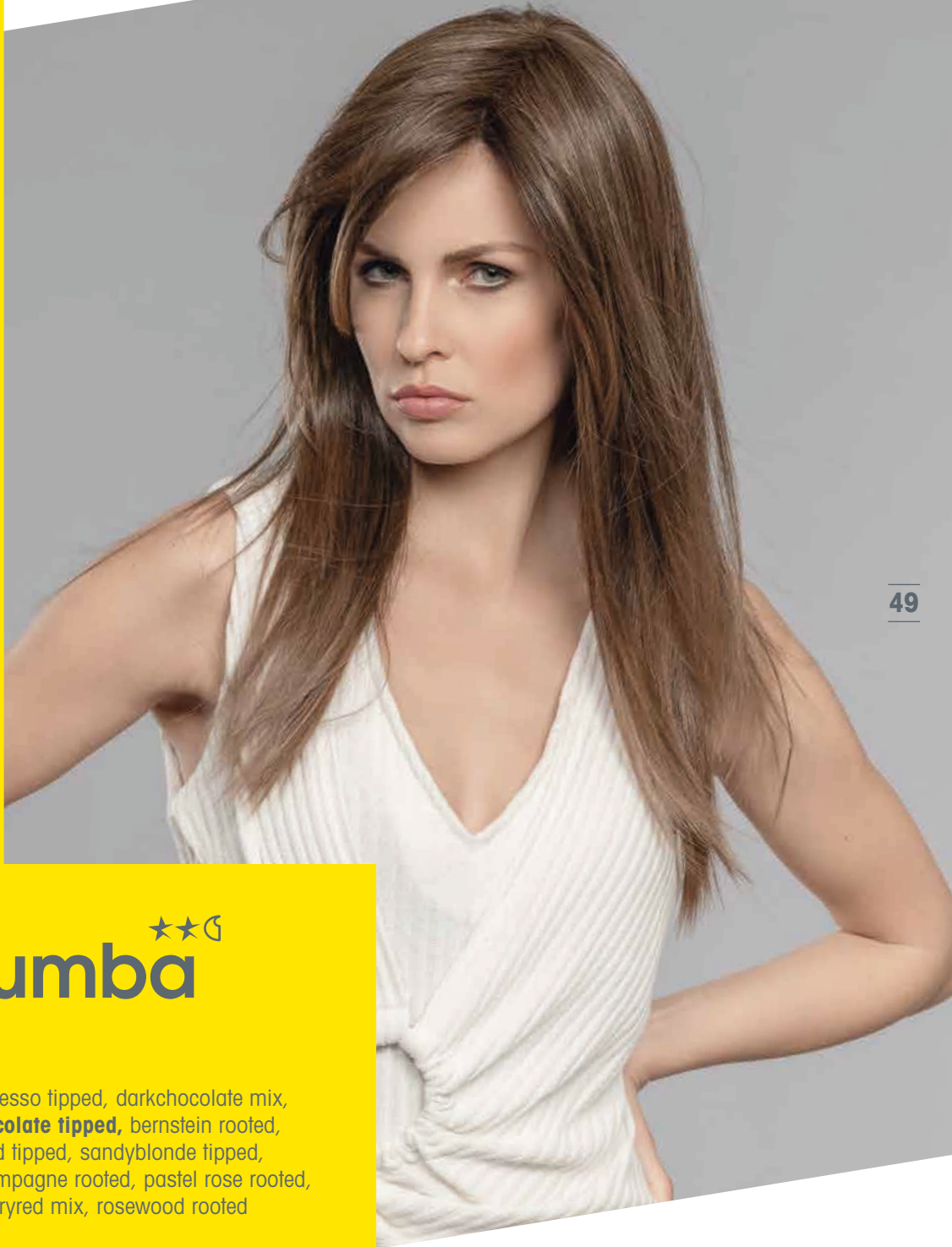
STYLING WAVY





milonga
deluxe
in champagne rooted





★★★
rumba

espresso tipped, darkchocolate mix,
chocolate tipped, bernstein rooted,
sand tipped, sandyblonde tipped,
champagne rooted, pastel rose rooted,
cherryred mix, rosewood rooted



rumba

in sandyblonde tipped

in rosewood rooted

STYLING
WAVY / CURLY





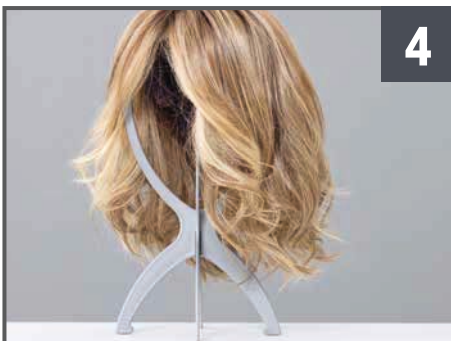
- DE** Das Haar anfeuchten und mit Anti Static Spray einsprühen.
- EN** Dampen the hair and spray with Anti-Static Spray.
- FR** Après avoir mouillé les cheveux, les vaporiser de spray anti-statique.
- IT** Inumidire i capelli e spruzzarci l'Anti Static Spray.
- ES** Humedece el cabello y rocía con el Anti Static Spray.



- DE** Einzelne Strähnen in Passés abteilen.
- EN** Separate the hair into individual strands.
- FR** Diviser les cheveux en mèches.
- IT** Dividere i capelli in ciocche.
- ES** Separa las mechas individualmente.



- DE** Mit dem auf 130° Celsius erhitzten Lockenstab im feuchten Haar von oben nach unten arbeiten.
- EN** Using the curling iron heated to 130° Celsius, work through the damp hair from top to bottom.
- FR** Sur cheveux mouillés, appliquer le fer à boucler à 130° de la racine jusqu'aux pointes.
- IT** Utilizzare un arricciacapelli alla temperatura massima di 130° Celsius sui capelli bagnati, lavorando da sopra a sotto.
- ES** Trabaja el cabello húmedo de arriba a abajo con el rizador a 130° Celsius.



- DE** Das gewellte Haar trocknen und auskühlen lassen.
- EN** Let the curled hair dry and cool.
- FR** Laisser sécher et refroidir la chevelure à l'air libre.
- IT** Lasciar asciugare e raffreddare.
- ES** Deja secar el cabello rizado y enfriar.



STYLING
WAVY



- DE** Das High-Heat-Hair anfeuchten.
- EN** Dampen the heat friendly hair.
- FR** Mouiller les cheveux.
- IT** Inumidire i capelli.
- ES** Humedece el cabello resistente al calor.



- DE** Mit Anti Static Spray einsprühen und gleichmäßig abteilen.
- EN** Spray with Anti-Static Spray and section evenly.
- FR** Les vaporiser de spray anti-statique et les diviser en mèches régulières.
- IT** Spruzzarci l'Anti Static Spray in modo omogeneo.
- ES** Rocía con el Anti Static Spray y secciona uniformemente.



- DE** Das Kreppeisen auf 130° Celsius etwa 3-5 Sekunden lang im feuchten Haar anwenden.
- EN** Apply the crimping iron to damp hair at 130° Celsius for about 3-5 seconds.
- FR** Sur cheveux mouillés, appliquer le fer à gaufrer à 130° entre 3 à 5 secondes.
- IT** Regolare il ferro alla temperatura di 130° Celsius, lasciando in posa per 3-5 secondi sui capelli umidi.
- ES** Calienta la plancha encrespadora a 130° Celsius y trabaja a lo largo del cabello húmedo durante unos 3-5 segundos.



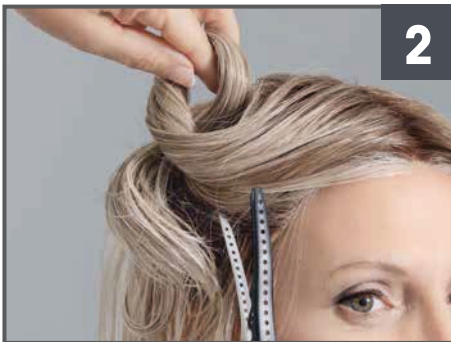
- DE** Die gekreppte Perücke trocknen und auskühlen lassen.
- EN** Let the crimped wig dry and cool.
- FR** Laisser sécher et refroidir les cheveux transformés.
- IT** Lasciar asciugare e raffreddare la parrucca.
- ES** Deja secar la peluca encrespada y enfriar.



**STYLING
CRIMPED**



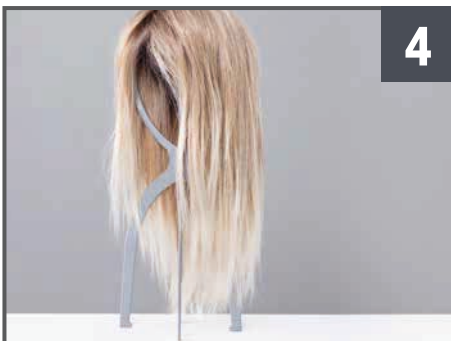
- DE** Feuchten Sie das Haar an und sprühen Sie es mit Anti Static Spray ein.
- EN** Dampen the hair and spray with Anti-Static Spray.
- FR** Vaporiser les cheveux de spray anti-statique après les avoir mouillés.
- IT** Inumidire i capelli e spruzzarci l'Anti Static Spray.
- ES** Humedece el cabello y rocía con el Anti Static Spray.



- DE** Teilen Sie das Haar passéweise ab.
- EN** Part the hair into sections.
- FR** Diviser les cheveux en mèches.
- IT** Dividere i capelli in ciocche.
- ES** Separa el cabello en mechas.



- DE** Glätten Sie das abgeteilte Haar im feuchten Zustand mit einem Glätteisen bei maximal 130° Celsius.
- EN** Straighten each section while damp with a straightening iron heated to 130° Celsius maximum.
- FR** Sur cheveux encore mouillés, appliquer le lisseur à 130°.
- IT** Lisciare i capelli da bagnati utilizzando una piastra alla temperatura massima di 130° Celsius.
- ES** Alisa el cabello húmedo seleccionado con una plancha máximo a 130° Celsius.



- DE** Lassen Sie das Haar anschließend trocknen und auskühlen.
- EN** Let the wig dry and cool.
- FR** Laisser les cheveux sécher et refroidir.
- IT** Infine lasciar asciugare e raffreddare.
- ES** Déjalo secar y enfriar.



**STYLING
STRAIGHT**

OVERVIEW



24 - 27

☆☆☆ aida

espresso mix, darkchocolate mix, chocolate rooted, tobacco rooted, sandmulti rooted, sandyblonde rooted, champagne rooted, **metallicblonde rooted**, blackcherry mix, auburn rooted, pepper mix, snow mix



24 - 27

☆☆☆ aida large

darkchocolate mix, chocolate rooted, tobacco rooted, sandmulti rooted, champagne rooted, **metallicblonde rooted**, snow mix



12 - 15

★★★★★☆☆ cassana hi deluxe

espresso mix, darkchocolate rooted, chocolate mix, mocca rooted, lightbernstein rooted, sand mix, sandyblonde rooted, champagne mix, **silverblonde rooted**, pearl rooted



40 - 43

★★☆ mambo

espresso tipped, **chocolate rooted**, hazelnut rooted, lightbernstein rooted, sandyblonde rooted, champagne rooted, rosewood rooted



08 - 11

★★★★☆☆ bolero mono part

espresso mix, darkchocolate mix, chocolate rooted, **lightbernstein rooted**, sandmulti rooted, sandyblonde rooted, champagne rooted, rosewood rooted, snow mix



44 - 47

★★★★★☆☆ milonga deluxe

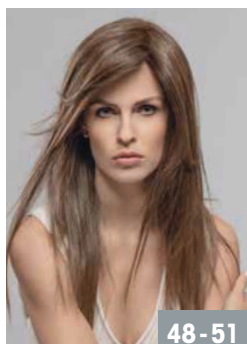
espresso mix, darkchocolate mix, chocolate rooted, mocca rooted, lightbernstein rooted, sandyblonde mix, **champagne rooted**



28 - 31

★★★ boogie mono part

espresso lighted, darkchocolate mix, chocolate rooted, lightbernstein rooted, sandyblonde rooted, **champagne rooted**, pastel rose rooted, rosewood rooted, salt/pepper mix, snow mix



48 - 51

★★☆ rumba

espresso tipped, darkchocolate mix, **chocolate tipped**, bernstein rooted, sand tipped, sandyblonde tipped, champagne rooted, pastel rose rooted, cherryred mix, rosewood rooted



36 - 39

★★☆☆
salsa

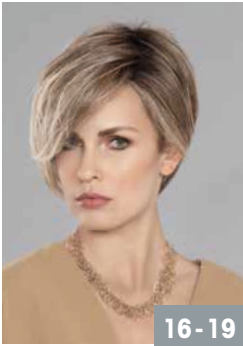
espresso mix,
darkchocolate mix,
cinnamonbrown mix,
chocolate rooted,
lightbernstein rooted,
sandyblonde rooted,
champagne rooted,
pastel rose rooted,
rosewood rooted



32 - 35

★★★★☆☆
zumba
mono part

espresso mix,
darkchocolate mix,
chocolate rooted,
lightbernstein rooted,
sandyblonde rooted,
champagne rooted,
pearl rooted,
silver mix



16 - 19

★★★★☆☆
tango
mono part

espresso lighted,
darkchocolate mix,
chocolate rooted,
bernstein mix,
sandmulti rooted,
sandyblonde mix,
champagne rooted,
pastel rose rooted,
cherryred mix,
salt/pepper mix, snow mix



04 - 07

★★★★☆☆
fosca
mono part

espresso mix, darkchocolate
mix, chocolate rooted,
bernstein rooted,
lightbernstein rooted,
sandyblonde rooted,
candyblonde rooted,
pearlblonde rooted,
pastelblonde rooted,
cherryred mix,
gingerblonde rooted



20 - 23

★★☆☆
twist

espresso mix,
cinnamonbrown lighted,
chocolate rooted,
nougat rooted,
lightbernstein rooted,
sand rooted,
sandyblonde rooted,
pearlblonde rooted,
lightchampagne rooted,
salt/pepper mix, silver mix

MIXTURE

MIX

Modische Farbmischung und Strählung
Fashionable colour blend and high/lowlights
Effet méché dans des coloris tendance
Miscela di tonalità diverse alla moda
Mezcla de colores y mechas de moda

ROOTED

Natürliche Ansatzfarbgebung
Naturally rooted colours
Effet racine dans un ton plus foncé
Effetto ricrescita: la base delle meche è scura
Raíz naturalmente más oscura

TIPPED

Farblich abgesetzte Spitzen
Colour contrasting tips
Pointes contrastées
Effetto degradé
Efecto degradado en las puntas

LIGHTED

Farb-Highlights im Ponybereich
Highlighted fringe
Effet méché accentué sur la frange
Riflessi chiari nella parte della frangia
Reflejos más claros en el flequillo

QUALITY

★★

Wirbel Mono + Tresse
Including mono-crown + wefted
Rond-point en monofilament + tresse
Monofilamento parziale al vortice
Monofilamento en la parte superior de la coronilla

★★★

Scheitel Mono + Tresse
Including mono parting / Weft
Raie en monofilament + tresse
Monofilamento parziale alla riga
Monofilamento en la parte de la raya

★★★★★★

Monofilament + 100 % handgeknüpft
Monofilament + 100 % handmade
Monofilament + 100 % fait main
Monofilamento + 100 % fatta a mano
Monofilamento + 100 % anudada a mano

⊂

Mini-Filmansatz
Mini lace front
Mini bordure invisible
Mini tulle Cinéma
Tul frontal mini

⊂

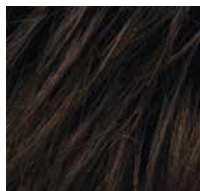
Filmansatz
Lace front
Tulle Cinéma
Tul Cinema
Tul frontal

“

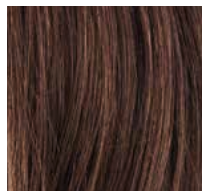
Erweiterter Filmansatz
Extended lace front
Bordure invisible extra-longue
Tulle cinema prolungato
Tul frontal alargado



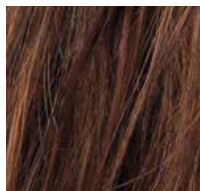
COLOURS



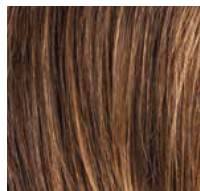
espresso
2.4



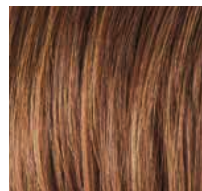
darkchocolate
4.33



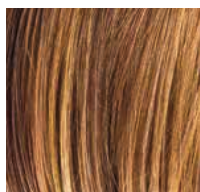
cinnamonbrown
6.30.33



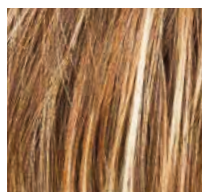
chocolate
830.27.6



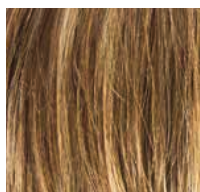
mocca
830.27.12



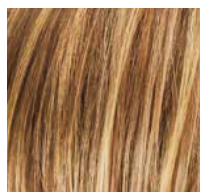
hazelnut
830.31.6



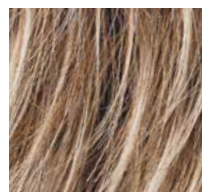
tobacco
8.27.26



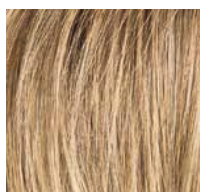
bernstein
12.20.31



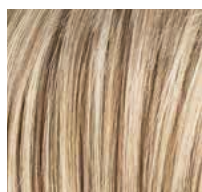
lightbernstein
12.26.27



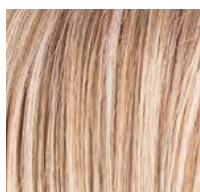
sandmulti
20.12.22



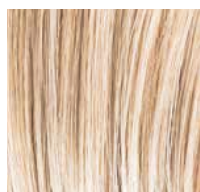
sand
14.16.20



sandyblonde
16.22.20



candyblonde
101.27.24



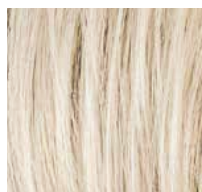
pearlblonde
101.20.25



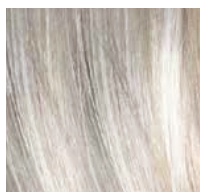
champagne
101.20.23



pastelblonde
25.22.26



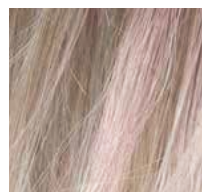
lightchampagne
24.1001.101



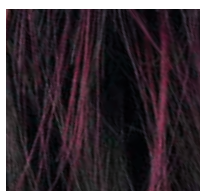
metallicblonde
60.101.51



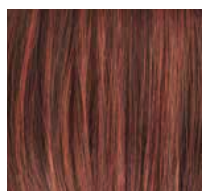
silverblonde
60.23



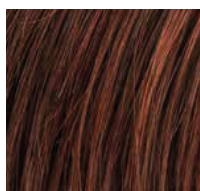
pastel rose



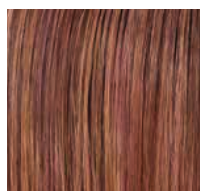
blackcherry
1.131



cherryred
133.33



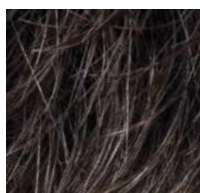
auburn
33.130.4



rosewood



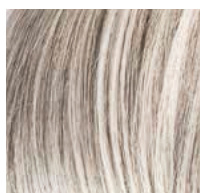
gingerblonde
26.19.31



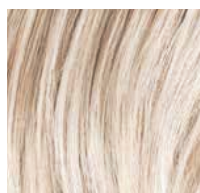
pepper
39.44



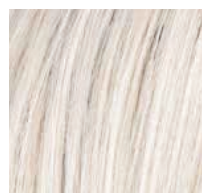
salt/pepper
51.44.39



snow
60.56.58



pearl
101.14



silver
56.60

Stimulate
HAIRDESIGN



HAIR
HAIR