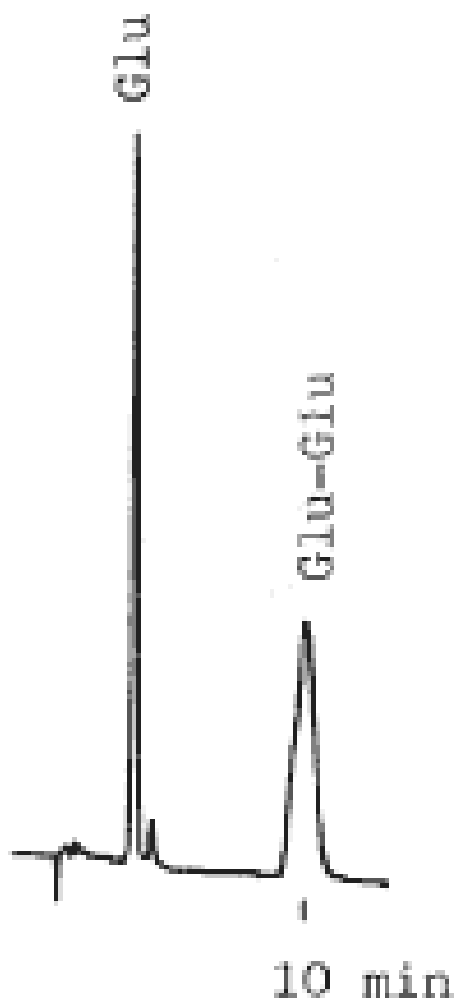


Amino acid and dipeptide

Data No. LA408-0000



Column : Bioptic AV-2
5 μ m
150 \times 4.6 mm I.D.

Solutes : 1. Glutamic acid (Glu)
2. Glu-Glu

Column Cat. No. : 5020-02512

Eluent : 50 mM Boric acid, 0.2 % H₃PO₄ (pH 4.5;
NaOH)/CH₃CN = 50/50

Flow rate : 1.0 mL/min.

Col. Temp. : 30°C

Detection : UV 210 nm

Injection Vol. :

Sample : Amino Acid and Dipeptide