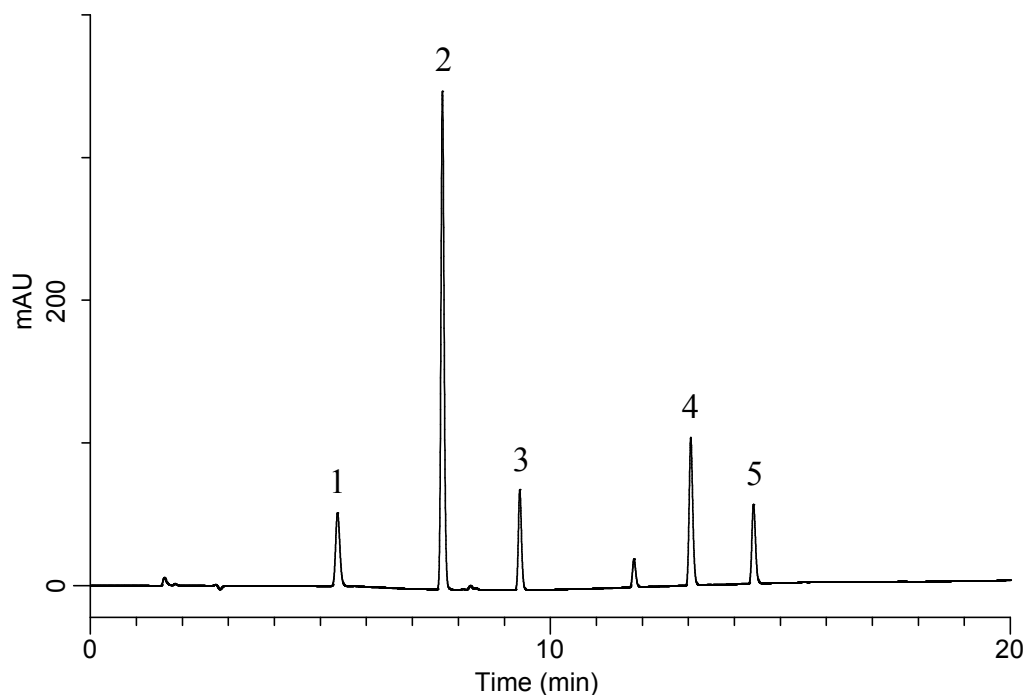


InertSearch™ for LC

Inertsil™ Applications

Analysis of Artificial sweeteners

Data No. LB559-0919



Conditions

System : GL7700 HPLC system
Column : InertSustain AQ-C18
(5 μ m, 150 x 4.6 mm I.D.)
Column Cat. No. : 5020-89730
Eluent : A) CH₃CN
B) 10 mM KH₂PO₄ in H₂O (pH 2.0, H₃PO₄)

Analyte:

1. Acesulfame potassium
2. Saccharin
3. Aspartame
4. Advantame
5. Neotame
(10 mg/L each)

Time (min)	A (vol%)	B (vol%)
0.0	5	95
20.0	65	35

Flow Rate : 1.0 mL/min
Col. Temp. : 40 °C
Detection : UV 210 nm (PD7752 PDA Detector)
Injection Vol. : 20 μ L
Sample : Standard