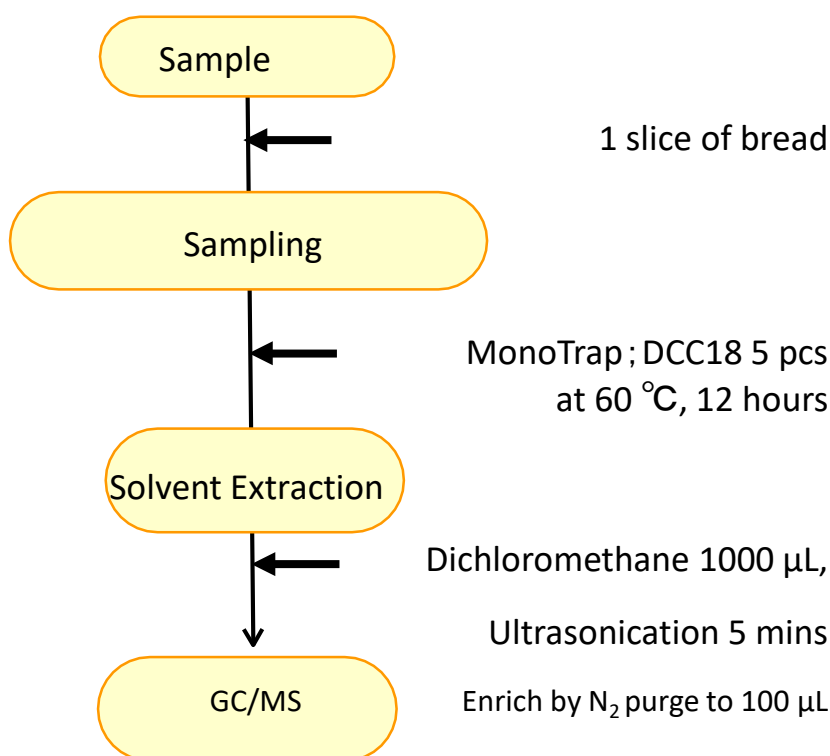


MonoTrap is a hybrid novel adsorbent that combines a large surface area and the properties of silica gel, activated carbon, and ODS. Utilizing the surface of porous silica, it can be used as a tool that makes use of the large surface area and the adsorbent effect caused by the inclusion of activated carbon for high collection efficiency and for short time and sensitive analysis. In this study, we used MonoTrap DCC18 (with activated carbon) to perform simple enrichment analyses of the fragrance components of bread. With the use of several low-cost MonoTrap copies per sheet at a time, warming at the time of collection and enrichment after extracting solvents, we were able to obtain high sensitivities and a lot of information. The highly inert WAX-column InertCap Pure-WAX is the optimal column for fragrance components analyses. It is recommended to use this medicine in conjunction with MonoTrap.

Column : InertCap Pure-WAX (Cat.No. 1010-68142) 0.25 mm I.D. × 30 m df=0.25 μm

Protocol



③MT Extract Cup with Vial

GC Condition

System : SHIMADZU GC-2010, GCMS-QP2010

Column : InertCap Pure-WAX
0.25 mm I.D. × 30 m df=0.25 μm

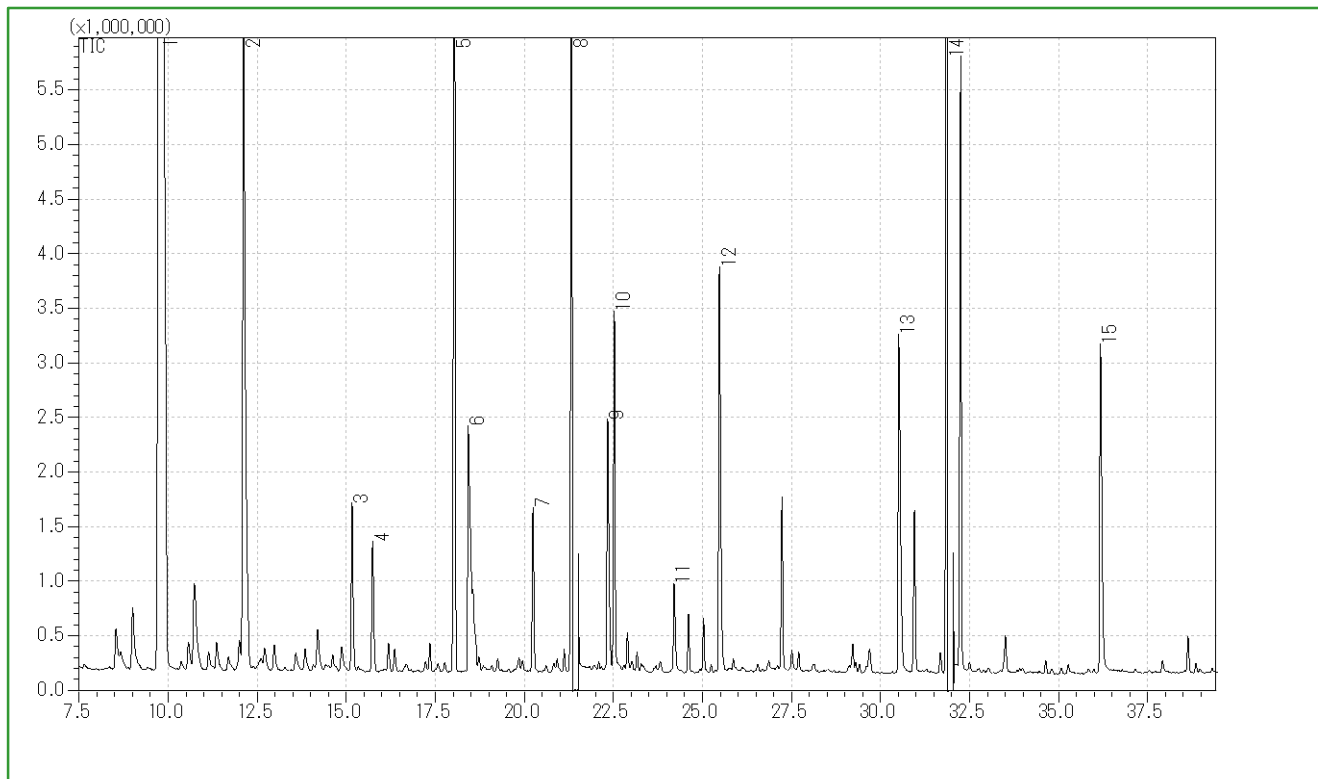
Column Temp : 40 °C (5 min) → 4 °C/min → 250 °C (5 min)

GC Capillary Column : **InertCap Pure-WAX** 0.25 mm I.D. × 30 m df=0.25 μm Cat.No. 1010-68142

Carrier Gas : He 95 kPa

Injection : SplitLess, 1 μL 250 °C
: MS Scan (*m/z*; 25-450)

Detection



- | | | | |
|---|-----------------------|----|---------------------|
| 1 | Isopentyl alcohol | 9 | Isobutyric acid |
| 2 | Acetyl methylcarbinol | 10 | 2,3-Butanediol |
| 3 | 1-Hexanol | 11 | Butanoic acid |
| 4 | 3-Ethoxy-1-propanol | 12 | Isovaleric acid |
| 5 | Ethyl caprylate | 13 | Hexanoic acid |
| 6 | Acetic acid | 14 | Phenylethyl alcohol |
| 7 | Benzaldehyde | 15 | Octanoic acid |
| 8 | 2,3-Butanediol | | |

Ultra inert WAX column **InertCap Pure-WAX** is highly recommended to analyze aromatic compounds together with **MonoTrap**

GL Sciences disclaims any and all responsibility for any injury or damage which may be caused by this data directly or indirectly. We reserve the right to amend this information or data at any time and without any prior announcement.

GL Sciences, Inc. Japan

22-1 Nishishinjuku 6-Chome
Shinjuku-ku, Tokyo,
163-1130, Japan
Phone: +81-3-5323-6620
Fax: +81-3-5323-6621
Email: world@glsc.co.jp
Web: www.glsciences.com

GL Sciences B.V.

De Sleutel 9
5652 AS Eindhoven
The Netherlands
Phone: +31 (0)40 254 95 31
Email: info@glsciences.eu
Web: www.glsciences.eu

GL Sciences (ShangHai) Ltd.

Tower B, Room 2003,
Far East International Plaza,
NO,317 Xianxia Road,
Changning District.
Shanghai, China P.C. 200051
Phone: +86 (0)21-6278-2272
Email: contact@glsciences.com.cn
Web: www.glsciences.com.cn

GL Sciences, Inc. USA

4733 Torrance Blvd. Suite 255
Torrance, CA 90503
Phone: 310-265-4424
Fax: 310-265-4425
Email: info@glsciencesinc.com
Web: www.glsciencesinc.com

International Distributors

Visit our Website at:

<https://www.glsciences.com/company/distributor.html>