

With ColorVu, You'll Enjoy

Images shot by ColorVu camera were with supplementary light OFF

True Color Information

- Accurate color rendering
- Excellent performance in low-light environments



Unable to identify color



Accurate color

More Details

- Clearly captured color information
- Richer details compared to black and white imaging



Lost details



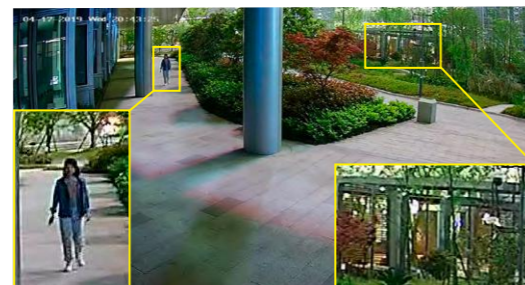
Rich color-related details

Better Visual Experience

- Balanced brightness
- F1.0 super aperture and advanced sensor guarantee realistic rendering



Blurry



Sharp

24/7 Colorful Imaging

View in Color,
Even in Darkness

ColorVu
Turbo HD Camera



Headquarters
No.555 Qianmo Road, Binjiang District,
Hangzhou 310051, China
T +86-571-8807-5998
overseasbusiness@hikvision.com



HIKVISION
www.hikvision.com

Combining Great Technologies for Greater Image Quality

F1.0 Super Aperture
Collects more light to produce brighter image.

Friendly Lighting
Soft and warm supplemental light works to guarantee colorful images when in zero-light environments.



Advanced Sensor
Vastly improves the utilization of available light.

ColorVu Camera

Bullet



DS-2CE10DF3T-F
2 MP ColorVu Mini Bullet Camera

- 24/7 color imaging with F1.0 aperture
- 0.0005 lux
- 130 dB true WDR, 3D DNR technology
- Smartlight 20 m
- IP67
- Metal casing
- 2.8, 3.6 or 6 mm lens



DS-2CE10DF3T-PF
2 MP ColorVu Mini Bullet Camera

- 24/7 color imaging with F1.0 aperture
- 0.0005 lux
- 130 dB true WDR, 3D DNR technology
- Smartlight 20 m
- IP67
- Plastic casing
- 2.8, 3.6 or 6 mm lens



DS-2CE12DF3T-F
2 MP ColorVu Bullet Camera

- 24/7 color imaging with F1.0 aperture
- 0.0005 lux
- 130 dB true WDR, 3D DNR technology
- Smartlight 40 m
- IP67
- Metal casing
- 2.8, 3.6 or 6 mm lens

Turret



DS-2CE70DF3T-MF
2 MP ColorVu Turret Camera

- 24/7 color imaging with F1.0 aperture
- 0.0005 lux
- 130 dB true WDR, 3D DNR technology
- Smartlight 20 m
- IP67
- Metal casing
- 2.8, 3.6 or 6 mm lens



DS-2CE70DF3T-PF
2 MP ColorVu Turret Camera

- 24/7 color imaging with F1.0 aperture
- 0.0005 lux
- 130 dB true WDR, 3D DNR technology
- Smartlight 20 m
- Plastic casing
- 2.8, 3.6 or 6 mm lens



DS-2CE72DF3T-F
2 MP ColorVu Turret Camera

- 24/7 color imaging with F1.0 aperture
- 0.0005 lux
- 130 dB true WDR, 3D DNR technology
- Smartlight 40 m
- IP67
- Metal camera body, plastic enclosure
- 2.8, 3.6 or 6 mm lens

DVR



DS-7204HUHI-K1/2
4-Channel DVR

- HDTVI / AHD / CVI / CVBS / IP Video Inputs
- H.265Pro+ / H.265Pro / H.265
- 5 MP @ 12 fps (CH1: supports 8 MP @ 8fps)
- Maximum 8 IP Camera Inputs (up to 8 MP)



DS-7208HUHI-K1/2
8-Channel DVR

- HDTVI / AHD / CVI / CVBS / IP Video Inputs
- H.265Pro+ / H.265Pro / H.265
- 8 MP @ 8fps / 5 MP @ 12 fps
- Maximum 16 IP Camera Inputs (up to 8 MP)



DS-7216HUHI-K2
16-Channel DVR

- HDTVI / AHD / CVI / CVBS / IP video inputs
- H.265Pro+ / H.265Pro / H.265
- 8 MP @ 8fps / 5 MP @ 12 fps
- Maximum 32 IP Camera Inputs (up to 8 MP)



DS-7204HQHI-K1
4-Channel DVR

- HDTVI / AHD / CVI / CVBS / IP Video Inputs
- H.265Pro+ / H.265Pro / H.265
- 4 MP Lite @ 15 fps / 1080p @ 15fps
- Maximum 6 IP Camera Inputs (up to 6 MP)



DS-7208HQHI-K1/2
8-Channel DVR

- HDTVI / AHD / CVI / CVBS / IP Video Inputs
- H.265Pro+ / H.265Pro / H.265
- 4 MP Lite @ 15 fps / 1080p @ 15fps
- Maximum 12 IP Camera Inputs (up to 6 MP)



DS-7216HQHI-K1/2
16-Channel DVR

- HDTVI / AHD / CVI / CVBS / IP Video Inputs
- H.265Pro+ / H.265Pro / H.265
- 4 MP Lite @ 15 fps / 1080p @ 15fps
- Maximum 24 IP Camera Inputs (up to 6 MP)

AcuSense DVR



iDS-7204HUHI-M1(2)/S
4-Channel AcuSense DVR

- Deep learning-based facial detection or behavior analysis
- 1-ch human face capture or 4-ch false alarm reduction
- HDTVI / AHD / CVI / CVBS / IP Video Inputs
- H.265Pro+ / H.265Pro / H.265
- 5 MP @ 12 fps (CH1: supports 8 MP @ 8fps)
- Maximum 8 IP Camera Inputs (up to 8 MP)



iDS-7208HUHI-M1(2)/S
8-Channel AcuSense DVR

- Deep learning-based facial detection or behavior analysis
- 1-ch human face capture or 4-ch false alarm reduction
- HDTVI / AHD / CVI / CVBS / IP Video Inputs
- H.265Pro+ / H.265Pro / H.265
- 8 MP @ 8fps / 5 MP @ 12 fps
- Maximum 16 IP Camera Inputs (up to 8 MP)



iDS-7204HQHI-M1/S
4-Channel AcuSense DVR

- Deep learning-based facial detection or behavior analysis
- 1-ch human face capture or 2-ch false alarm reduction
- HDTVI / AHD / CVI / CVBS / IP Video Inputs
- H.265Pro+ / H.265Pro / H.265
- 4 MP Lite @ 15 fps / 1080p @ 15fps
- Maximum 6 IP Camera Inputs (up to 6 MP)



iDS-7208HQHI-M1(2)/S
8-Channel AcuSense DVR

- Deep learning-based facial detection or behavior analysis
- 1-ch human face capture or 4-ch false alarm reduction
- HDTVI / AHD / CVI / CVBS / IP Video Inputs
- H.265Pro+ / H.265Pro / H.265
- 4 MP Lite @ 15 fps / 1080p @ 15fps
- Maximum 12 IP Camera Inputs (up to 6 MP)



iDS-7216HQHI-M1(2)/S
16-Channel AcuSense DVR

- Deep learning-based facial detection or behavior analysis
- 1-ch human face capture or 4-ch false alarm reduction
- HDTVI / AHD / CVI / CVBS / IP Video Inputs
- H.265Pro+ / H.265Pro / H.265
- 4 MP Lite @ 15 fps / 1080p @ 15fps
- Maximum 24 IP Camera Inputs (up to 6 MP)