

OUTDOOR LEARNING @ WEEKE



An update on our Outdoor Learning
provision at Weeke Primary.



WHAT IS OUTDOOR LEARNING @ WEEKE?

Weeke Primary School has a unique approach to outdoor learning based around honesty and transparency. We want parents and visitors to have a clear understanding of what it is and why we do it. The following information will give you a clearer understanding of our approach and principles to learning outside the classroom.





OUR DEFINITION

At Weeke Primary School, we believe that outdoor learning is a vital component of our educational approach, enhancing the overall development of every child. Our outdoor learning experiences are not merely about taking traditional classroom activities outside; instead, they represent a hybrid model where we engineer our curriculum to make learning more relevant, engaging, and memorable.

Key Elements of Our Outdoor Learning Approach:

- **Curriculum Integration:** Our outdoor learning is thoughtfully integrated into the curriculum, ensuring that it supports and enriches the educational objectives across all subjects. We do not view outdoor learning as simply filling in worksheets or conducting lessons outside; rather, it is about creating meaningful learning experiences that resonate with our children.
- **Trained Staff:** All our staff are trained in outdoor learning methodologies, equipping them to successfully adapt the curriculum for outdoor environments. This training empowers teachers to deliver high-quality, engaging lessons that leverage the benefits of outdoor settings.
- **Holistic Development:** We understand the importance of outdoor learning in supporting well-being, general health, and the development of interpersonal skills. Our ethos emphasises that outdoor experiences contribute significantly to the emotional and social growth of each child, fostering a sense of community and connection with nature.





OUR DEFINITION

- Qualified Leadership: While we are not yet an accredited Forest School provider, we are proud to have a fully qualified Level 3 Forest School leader on our team. This expertise allows us to deliver highly engaging learning experiences and provides robust support for our entire staff. Our extensive and mature grounds offer a sustainable outdoor environment that is relevant to child development.
- Passion for Outdoor Education: Our Headteacher's passion and training in Forest Schools ensure that our outdoor curriculum is well-embedded and relevant for all children. This commitment drives our efforts to create enriching outdoor learning experiences that enhance academic achievement and personal growth.

At Weeke Primary School, we are dedicated to providing an outdoor learning experience that is innovative, effective, and integral to our mission of fostering successful, confident, independent, and happy learners.



OUTDOOR LINKED TO CURRICULUM

At Weeke Primary School, outdoor learning is meticulously planned and seamlessly integrated into our curriculum from the Early Years Foundation Stage (EYFS) through to Year 6. These experiences are designed to allow children to experience, immerse themselves in, re-live, and absorb the knowledge, skills, and vocabulary necessary for their academic and personal development. Our approach ensures that outdoor learning is not merely an add-on but a fundamental aspect of our educational philosophy.

Our Outdoor Learning Approach – Examples

Daily Outdoor Learning in EYFS:

- In the EYFS, children engage in daily outdoor learning as an integral part of their curriculum. This includes activities that promote exploration and discovery, such as nature walks, gardening, and sensory play.
- Children learn to observe their environment, describe what they see, and use a rich vocabulary to express their experiences. For example, they may explore the textures of leaves, the sounds of birds, or the changes in weather, fostering a deep connection with the natural world.



Year 2 Science: Understanding Habitats:

- In Year 2, outdoor learning is linked to the Science curriculum, where children study habitats. They participate in hands-on activities such as pond dipping, identifying local flora and fauna, and understanding the interdependence of species in their environment.
- This experiential learning allows children to apply their classroom knowledge in real-world contexts, reinforcing their understanding of ecosystems and biodiversity.

Year 4: Immersing in Ancient Egyptian Techniques:

- Year 4 students immerse themselves in the historical context of Ancient Egypt by exploring techniques for water irrigation. They may engage in practical activities, such as creating models of irrigation systems using outdoor materials.
- This approach not only brings history to life but also helps children grasp the importance of water management in ancient civilizations, linking it to current environmental issues.

Year 5: Developing Team Building Skills through Orienteering:

- In Year 5, children participate in orienteering activities that focus on developing teamwork and problem-solving skills. They navigate through outdoor settings using maps and compasses, fostering collaboration and communication among peers.
- This experience enhances their physical skills while also building confidence and resilience, essential qualities for lifelong learning.

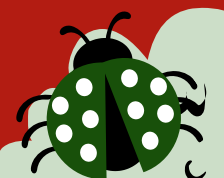
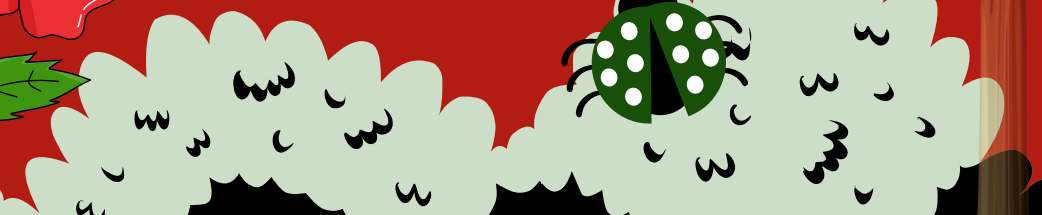
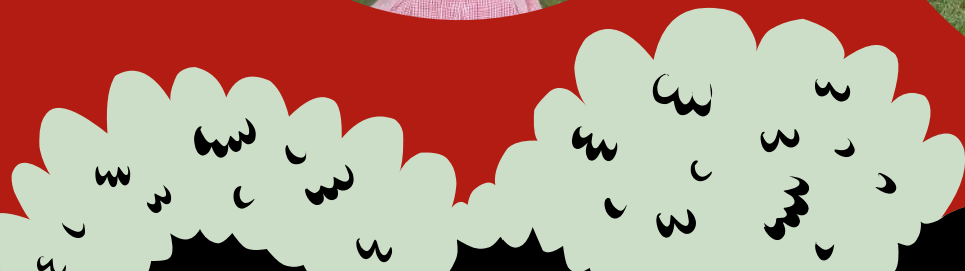
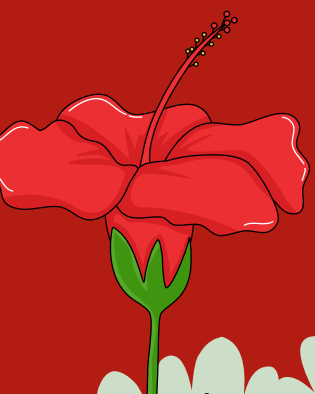




Structured and Enriching Experiences:

- Our outdoor learning experiences are well-structured and thoughtfully planned, ensuring they are not simply "bolt-ons" or worksheets to colour in outside. Each activity is designed to enrich our children's lifelong knowledge and skills, promoting critical thinking and creativity.
- We leverage the expertise and qualifications of our staff in outdoor learning to create a dynamic curriculum that thrives. Our fully qualified Level 3 Forest School leader plays a pivotal role in this process, ensuring that outdoor learning is engaging, safe, and educationally valuable.

Conclusion: Through our comprehensive approach to outdoor learning, Weeke Primary School empowers children to connect their classroom learning with the world around them. By immersing them in meaningful experiences, we prepare them not only for academic success but also for a fulfilling life beyond school. Our commitment to outdoor learning reflects our vision of fostering successful, confident, independent, and happy learners.





WHAT'S THIS FOREST SCHOOLS?

Forest Schools is an innovative educational approach that encourages children to explore and learn in a natural environment. It is characterised by child-led learning, where children are given the freedom to discover, investigate, and connect with the outdoors. At Weeke Primary School, we deliver a series of fully recognised Forest Schools learning experiences throughout a child's time with us. These sessions are conducted in small groups, led by a Level 3 qualified Forest School leader, alongside another member of staff to ensure safety and effective learning.

Principles of Forest Schools: According to the Forest School Association (FSA), the key principles of Forest Schools include:

1. Regular sessions: Forest School takes place over a sustained period of time, allowing children to build relationships with their peers and the environment.
2. Learning in the outdoors: Children learn in a natural environment, which enhances their understanding of the world around them.
3. Child-led learning: Children are encouraged to explore their interests and make choices about their learning, fostering independence and confidence.
4. Risk management: Children learn to assess and manage risks, developing their decision-making skills and resilience.
5. Holistic development: Forest Schools support the emotional, social, and physical development of children, promoting well-being and interpersonal skills.
6. Connection with nature: Children develop a sense of belonging and connection to the natural world, which is essential for their overall growth and development.



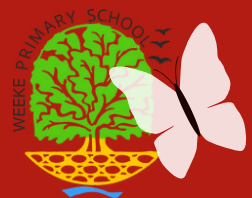


Our Commitment to Forest Schools:

At Weeke Primary School, we aim to be the first accredited Forest School provider in the Winchester area. Currently, there is only one Forest School Association provider within the Winchester and Eastleigh district, and we are committed to enhancing our outdoor learning offerings to meet this standard. We believe that the principles of Forest Schools align perfectly with our school vision and values, which emphasise respect, kindness, responsibility, and excellence.

By clearly defining our approach to Forest Schools, we aim to ensure that parents and visitors understand the significance of outdoor learning in our curriculum. We are dedicated to creating enriching experiences that empower our children to become successful, confident, independent, and happy learners, all while fostering a deep connection with the natural world.





OUR OUTDOOR SPACE

At Weeke Primary School, our extensive grounds provide a rich and diverse environment for outdoor learning and play. We are proud of our mature and sustainable woodland, which serves as a natural classroom for exploration and discovery. Our all-weather paths ensure that children can engage with the outdoors throughout the year, regardless of the weather.

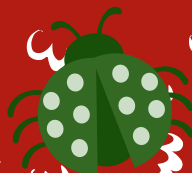
A standout feature of our outdoor space is our all-seasons, inviting, and warm Mongolian yurt, which serves as an outdoor classroom. This unique space allows children to learn in a comfortable and inspiring setting, fostering creativity and collaboration.

We have dedicated physical development spaces tailored for different age groups, allowing children to enhance their motor skills and engage in active play. The bespoke outdoor area for our Early Years Foundation Stage (EYFS) is designed to stimulate curiosity and creativity, fostering a love for learning from a young age. Our grounds feature a variety of habitats, including a manageable and accessible pond that provides opportunities for hands-on learning about ecosystems and wildlife. The well-resourced playground encourages imaginative play and social interaction, while our very large field offers ample space for sports and recreational activities.

Additionally, our access to an even larger green space allows for extended outdoor learning experiences, ensuring that every child at Weeke Primary School can connect with nature and thrive in a stimulating and supportive environment.



TAKE A LOOK!





THANK YOU

Thank you for your interest in outdoor learning at Weeke Primary School! Our commitment to providing enriching outdoor experiences is integral to our educational approach, fostering creativity, independence, and a deep connection with nature among our children.

To learn more about our outdoor learning initiatives, including our Forest School programme and the diverse opportunities available to our children, please visit our school website. You can find detailed information about our facilities, upcoming events, and the unique experiences we offer.

If you have any questions or would like to discuss our outdoor learning further, please don't hesitate to reach out. Our school contacts are available to assist you. We look forward to welcoming you to our vibrant school community!



Website: www.weekeprimary.com

Contact Email: officeadmin@weeke.hants.sch.uk

Phone Number: 01962 882710





THANK YOU

