

Minimum Footprint  
Maximum Productivity

# **ASIGA<sup>®</sup> MAX**

## 3D Printer

Repeatable Precision For  
Quality Assurance & Patient Safety





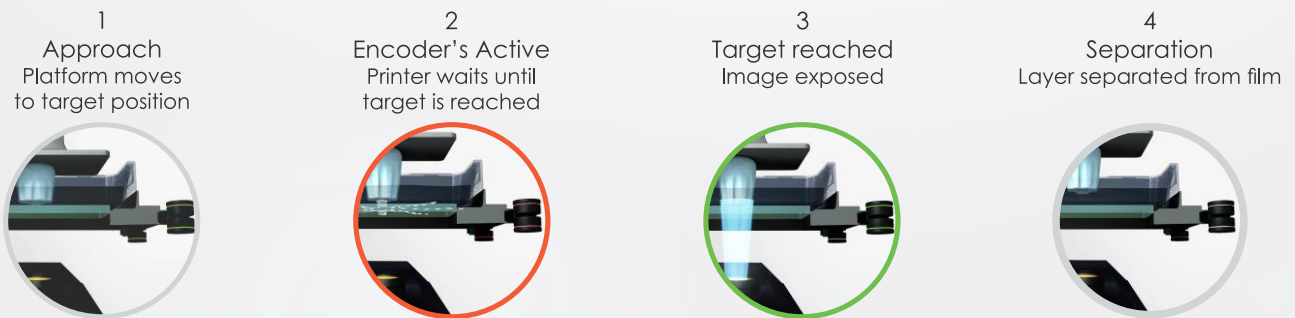
The Asiga Max is the world's most advanced digital dental 3D printer offering exceptional productivity in a small footprint. With 62µm HD print precision, the Asiga MAX is optimized for orthodontics, crown & bridge, surgical guides, dental models, custom trays and partial dentures in a lab and clinical environments. All Asiga printers are open to materials from any supplier for maximum flexibility and economy.

**Process Monitoring Technologies:**

These technologies ensure every layer is formed accurately resulting in a reliable output for quality assurance & patient safety.

**Smart Positioning System Technology (SPS)**

**The Smart Positioning System (SPS):** is a series of positioning encoders that read the exact position of the build platform during each layer approach. This ensures the next layer is only exposed/formed once the build platform target position has reached.



**Internal radiometer:** An internal radiometer actively monitors LED intensity during each build ensuring the correct light exposure is delivered for every layer

**High power UV 385nm LED:** To print water-clear materials and many of the industry leading materials, a UV 385nm LED is required

**Small pixel and accurate pixel placement:** Pixel size and pixel placement are important for reproducing digital data accurately to achieve a precise fit. For dentistry, small pixel sizes are critical and we recommend between 47µm - 80µm depending on application.

**Precise material curing:** Our open Material System allows for any suitable material to be printed. Material curing parameters for each material are generated by Asiga ensuring materials are cured accurately for repeatable results.



### Open Material System

Over 380 optimized material profiles available via the Asiga Material Library online. Fully Open - print any suitable material from any manufacturer



### Single Point Calibration

Calibrate printer in under 60 seconds



### 30 Second Material Change

Change-over materials in less than 30 seconds with no calibration required



### Auto Power-Off

Energy saving mode and auto-recovery



### Environmental Control

Onboard heater for reliable performance



### Remote access and control

Streamlined integration into your digital workflow



### Touch Screen Display

For greater user convenience




Print Speed  
60mm/hr



Proven performance and unrivalled repeatability. The MAX UV is the industry benchmark for precision dental 3D printing. Optimised for the production of all types of dental appliances from restorative dentistry through to orthodontic.



Accessories	MAX	MAX 
Pixel Size X,Y	62µm	62µm
Build Size X,Y, Z	119 x 67 x 75mm	119 x 67 x 75mm
Light Source	405nm	385nm
Z Resolution	Variable in 1 µm	
Material System	Open-use any 3 <sup>rd</sup> party material	
File Inputs	STL, SLC, STM	
Network Compatibility	WIFI and Ethernet	
Industry Sectors	Digital Dentistry / Lab Production	
System Size	260 x 380 x 370mm	
System Weight	17.5 kg	
Packaged Size/ Weight	410 x 500 x 480mm /20Kg	
Power	12VDC 10A	

# AccuFab-L4K Dental 3D Printer

Lit Up For Dentistry



[SHINING3DDENTAL.COM](http://SHINING3DDENTAL.COM)

**SHINING 3D**  
DENTAL

# AccuFab-L4K Large-format Dental 3D Printer

AccuFab-L4K is the latest addition to the SHINING 3D family digital solutions. It is a large-format dental 3D printer developed completely in-house by SHINING 3D to make 3D printing solution more accessible to everyone. It brings users an exceptionally unique printing experience with its features like light-weight, large print size and user-friendly operation.



## Connecting the Future

### Link Aoralscan with AccuFab

Shining 3D intraoral scanner, 3D printer and dental material ecosystem provides exceptional experience in digital dentistry.

### AccuDesign

Life-time free upgrade model creator software that comes with AccuFab-L4K.

### Dental Cloud

SHINING 3D's cloud data platform enables data transmission, making it convenient for data transfer and communication between clinics and dental labs.





# Unparalleled Accuracy

## Accurate Precise

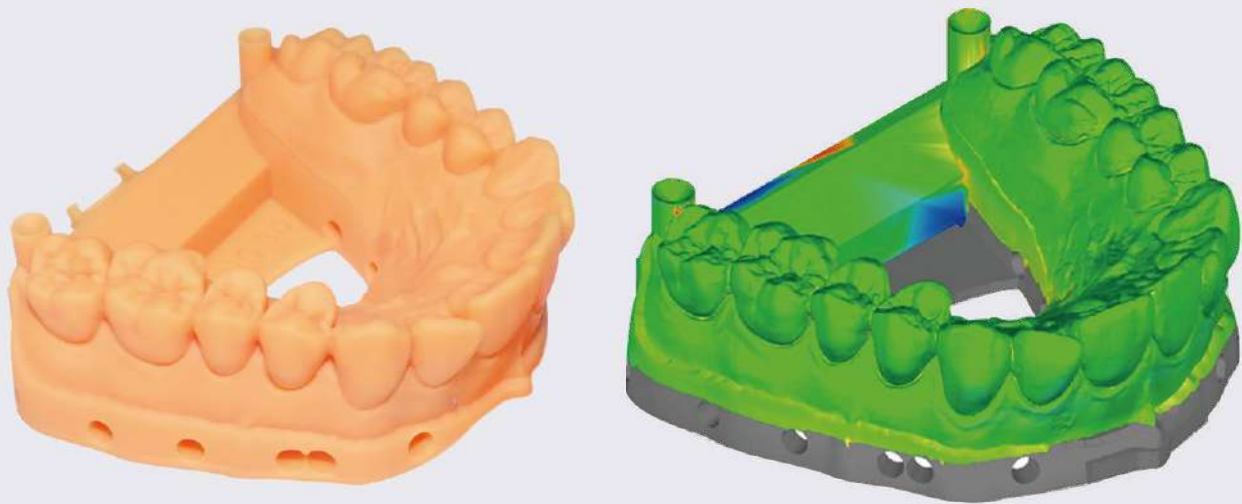
Over 96% of the surface points fits within  $\pm 0.1\text{mm}$

## Outstanding Uniformity

High luminance uniformity achieves up to 90%

## Beyond the Limits

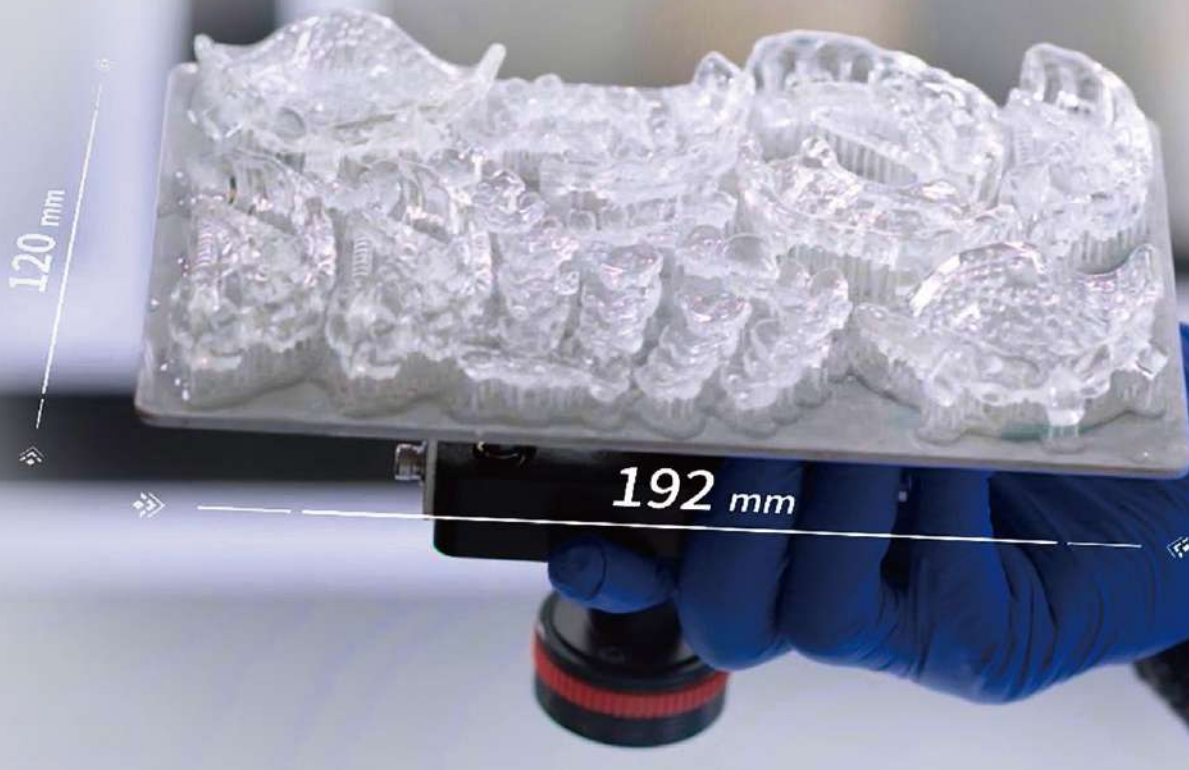
Provides not only the possibility to obtain features smaller than a pixel, but also superior surface finish.



4K

## Large Print Size, 4K Resolution

192\*120mm printing size and 4K resolution satisfy the demands of users for efficiency and details.





# Reliable Performance

## Industrial Grade Optical

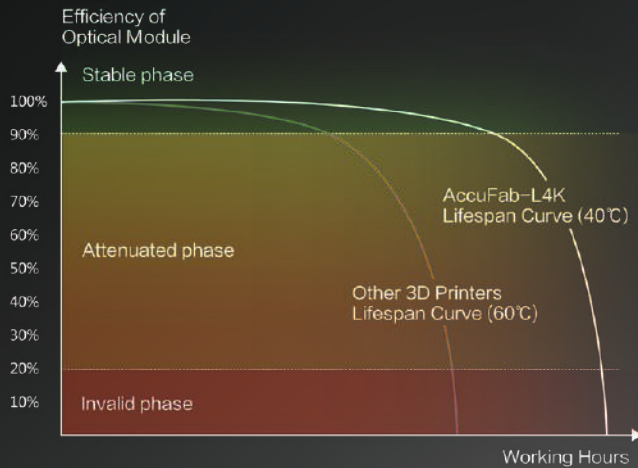
High quality optical module with long-life components

## State-of-the-Art Robustness

AccuFab-L4K's 5 million layers tested in real dental clinic condition provides state-of-the-art reliability.

## District Cooling System

DCS (District cooling system) maintains the temperature of working screen under 40°C, while extending the 3D printer lifespan significantly.



# Professional Dental Software

## Plug and Play

Guided interactive operation provides gentle learning curve

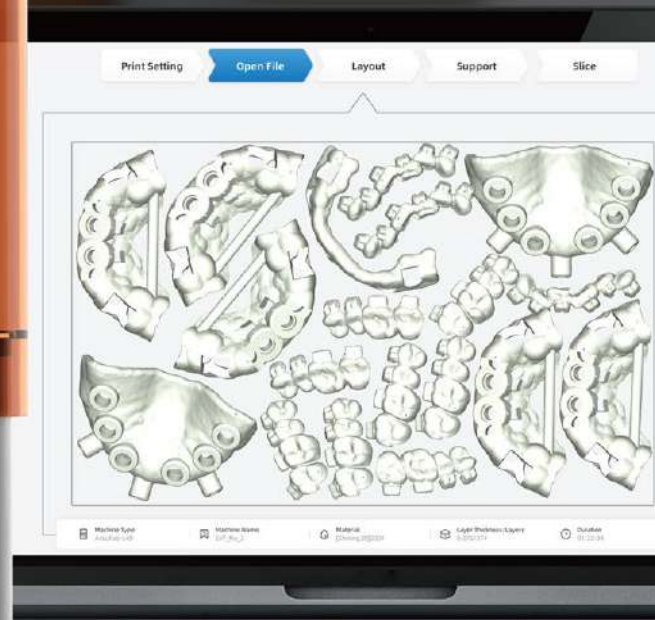
## Free Updates

Push update of software and material packages

## Accuracy Calibration Wizard

Step by step guide for accuracy calibration







# Multiple Material Options

## Shining Dent

Shining Dent covers a wide range of materials for dental 3D printing applications, includes dental model, ortho model, surgical guide, castable wax and gingiva mask.

## Certified 3<sup>rd</sup> Party Material

Shining 3D partners with industry leading brands in dental material, providing more possibility and flexibility.

**keyprint**  
by keystone industries

**BASF**  
We create chemistry

**pro3d**ure  
medical



# TECHNICAL SPECIFICATIONS

## AccuFab-L4K

Printer Size	360 x 360 x 530 mm
Printer Weight	about 19 kg
Print Volume (x/y/z)	192 x 120 x 180 mm
Resolution	3840 x 2400(4K) Px
Print Speed	10-50 mm/h ( depends on layer thickness and materials )
Layer Thickness	0.025/0.05/0.075/0.1 mm
Accuracy	± 50 µm
Connectivity	USB/Wi-Fi/Ethernet

\*Notice: SHINING 3D reserves the right to introduce modifications or alterations to any of the specifications and images used in this document.





# SONIC MIGHTY 4K

**EASY TO USE**

**PRINT BIG**

**SUPER STABLE**

**Phrozen Sonic Mighty 4K LCD 3D Printer** comes in simple yet well-protected packaging which all the necessary parts you need to jump start your printing. With an extended printing area of 9.3" & a 22cm Z-axis, Sonic Mighty 4K empowers makers to print larger and more ambitious builds that match your exact designs. But that's not all, Sonic Mighty 4K prints models in 4K quality, offers high-resolution printing at 51µm and brings your most ambitious creations to life with crazy details.

System	Sonic Mighty 4K
Operation	2.8" Touch Panel
Slicer Software	CHITUBOX
Connectivity	USB
Technology	Resin 3D Printer - LCD Type
LCD Specification	9.3" 4K Mono LCD
Light Source	405nm ParaLED Matrix 2.0
XY Resolution	52µm
Layer Thickness	0.01-0.30mm
Printing Speed	80mm/ hour
Power Requirement	AC100-240~50/60Hz
Printer Size	28 x 28 x 44 cm
Print Volume	20x 12.5 x 22 cm
Printer Weight	8 kg
VAT Material	Plastic / Metal

## Sonic Mighty 4K 3D Printer

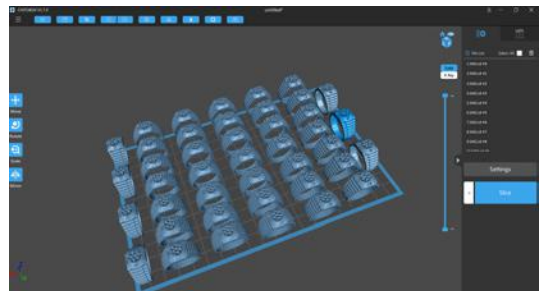


### Bigger & Better

With a printing area of 9.3" & a 22cm Z-axis, Sonic Mighty 4K brings your most ambitious creations to life with ease.

### Exceptionally Productive

No more printing in batches. Print once and you will be ready with dozens of miniatures in no time.



### Monochrome LCD Screen

Printer up to 4 times faster than traditional 3D printers, taking only two seconds to print on layer. 2000 working hours guaranteed for all LCD screens.

### Multi-Resin Compatibility

Works best with Phrozen's Aqua-Gray 4K, also compatible with 3rd party resins.



### Ultra-High Resolution

At 4k, 52µm printing quality, Sonic Mighty 4K is the premium choice for printing out larger builds with extremely high resolution.

### Mighty & Versatile

Designed and built for makers, Sonic Might 4K is powerful and suitable for personal and professional use.

