

Bucknell | ALUMNI
UNIVERSITY | ASSOCIATION

JANUARY 9-20, 2026

with optional
Buenos Aires pre-tour
and Iguazú Falls post-tour



ANTARCTICA DISCOVERY

Orbridge

AN EXCLUSIVE POLAR EXPEDITION

Dear Bucknellian,

We invite you to join us for a once-in-a-lifetime odyssey to the White Continent, where discovery and adventure converge, and polar wilderness awaits. Every moment of this specially curated itinerary immerses you in stark and surprising landscapes that define this breathtaking region.

This unforgettable journey offers up-close encounters with a diverse array of wildlife that call this pristine environment home—from penguins waddling along the snow to fur seals lounging on ice floes.

Your expedition vessel for this voyage is the modern, 190-guest *Ocean Victory*—a nimble craft designed specifically for polar cruising with the agility to navigate narrow channels and bays inaccessible to larger ships. On board, fine dining is a priority. Enjoy gourmet cuisine including several choices of entrees offered each evening to accommodate different tastes and dietary requirements. During leisure time peruse the extensive selection of books in the cozy library, master a workout in the well-equipped fitness room, or contemplate the unparalleled panoramas from the outdoor viewing platform. In the evenings, retire to your plush stateroom—a sanctuary of tranquility amongst the polar backdrop.

This is a peak-season sailing for university and college alumni association travelers. With significant savings of more than \$1,000 per couple, we anticipate this program will fill quickly.

To reserve, visit bucknell.orbridge.com or call (866) 639-0079.

'ray Bucknell,



Tasha Williams

Executive Director for Alumni, Family & Philanthropic Engagement
Center for Alumni & Family Engagement

Antarctica Discovery – The 7th Continent | Itinerary Highlights

Due to weather and ice patterns, the itinerary below may change in order to maximize wildlife and natural encounters.

Day 1 **EN ROUTE FROM U.S.** (Travel time from/to U.S. may take up to two days depending on flight schedules.)

Day 2 **ARRIVE IN USHUAIA, ARGENTINA** Unwind at an exceptional property within the Cerro Alarkén Natural Reserve. This evening become acquainted with fellow travelers during a welcome reception, and share in the excitement of the journey yet to unfold. Overnight: Arakur Ushuaia Resort & Spa (R)

Day 3 **USHUAIA – EMBARKATION** Wake to a morning at leisure. Relax at the hotel or independently explore the charming port town of Ushuaia on foot. Opt for an active excursion (additional fee)—a guided tour of nearby Tierra del Fuego National Park. Join a local English-speaking guide on a four-hour bus tour through Argentina's southernmost national park to learn about indigenous flora and fauna. Late afternoon rejoin the group for a motor coach transfer to the port for embarkation. Become familiar with your stateroom and the ship's welcoming public spaces. Before dinner meet your spirited expedition staff as they distribute your adventure gear. Overnight: *Ocean Victory* (B,D)

Days 4-5 **DRAKE PASSAGE** The following two days feature an exciting crossing through the Drake Passage, a legendary waterway where the Atlantic, Pacific and Southern Oceans converge. Have binoculars in reach to look for dolphins and whales, as well as albatross, skuas and gulls. Embrace valuable time as *Ocean Victory* becomes your home away from home amongst the backdrop of the pristine White Continent. Enjoy gourmet cuisine prepared by talented chefs using a variety of techniques including cooking on hot stone. Between meals take advantage of the self-service coffee and tea facilities in the observation lounge, available 24/7. Overnight: *Ocean Victory* (B,L,D daily)

Days 6-9 **SOUTH SHETLAND ISLANDS | ANTARCTIC PENINSULA** With the captain optimizing anchoring opportunities, the flexible daily itinerary presents an array of extraordinary experiences: Zodiac safaris, shore landings and hikes, and comprehensive lectures and presentations. Accompanied by the ship's expert expedition team and scientists, each outing offers extensive insight into the region's dramatic landscapes—millennia-old ice shelves, sheer cliff faces and untouched snowfields. Step ashore to witness bustling penguin rookeries, explore remnants of past explorations, and gain a deeper appreciation for ongoing scientific research. Back on board *Ocean Victory*, leisure time is cherished between exhilarating escapades. Rejuvenate in one of two hot tubs, master a workout in the well-equipped fitness room, book a luxurious spa treatment (additional fee), or join an optional photography excursion or sea kayaking outing (additional fees). Overnight: *Ocean Victory* (B,L,D daily)

Days 10-11 **DRAKE PASSAGE** As the expedition comes full circle, we retrace the route through the Drake Passage, recounting tales of exploration and discovery with fellow travelers. Engage in educational presentations by the ship's naturalists, enriching your understanding of this unblemished environment. Gather on deck for a last look at the endless panorama of ice and sea—a serene setting for retrospection and camaraderie. The final evening on board partake in the crew's End of Voyage ceremonies that commemorate your accomplishment of touring the last remote frontier. Overnight: *Ocean Victory* (B,L,D daily)

Day 12 **USHUAIA – DISEMBARKATION | DEPART FOR U.S.** After breakfast guests departing during the suggested times take the complimentary transfer to the airport for flights home. (B)

(B = Breakfast, L = Lunch, D = Dinner, R = Reception)

Important Note: Due to the remote location of this tour, medical insurance and medical evacuation insurance is required with a minimum coverage of \$200,000. Orbridge's Guest Services team can assist with questions regarding evacuation insurance.



What's Included

- 1 night luxury hotel accommodations (including breakfast) in Ushuaia prior to embarkation
- 9 nights aboard *Ocean Victory*, including all onboard meals (with select wine and beer at dinner)
- 24-hour self-service coffee and tea facilities onboard
- All scheduled landings and excursions listed in the itinerary (all subject to weather and ice conditions)
- An insulated waterproof/windproof expedition parka, which is yours to keep
- A pair of insulated rubber boots for shore landings for duration of the cruise (to be returned prior to disembarkation)
- Access to a photographic trip log (shared with guests after the voyage via an online link)
- All shipboard gratuities for the crew
- All luggage portage
- All port fees
- Transfers from the hotel to the ship on embarkation day
- Airport transfers for guests arriving and departing during the suggested times

Activity Level: This tour offers various activities including shore excursions and small boat cruises. Guests should be sure-footed on stairs and ramps, be able to walk or hike at least one mile on uneven and slippery terrain, and be comfortable landing on various terrain and boarding small vessels.



Orbridge Standard of Excellence

Orbridge understands travel today can be complicated. From cabin or room selection to airport transfers, dietary requests, or pre- or post-tour details—we are dedicated to making your journey seamless and special from the moment you leave home.

Our curated destinations—featuring outstanding properties and ships, meticulously crafted itineraries, and knowledgeable guides, travel directors and expedition leaders—offer life-changing experiences you'll never forget.

Our Guest Services team is staffed by well-traveled professionals who provide personalized attention, ensuring all your questions are answered and all the details of your trip are explained to you.

Our air partners can make flight arrangements for guests. In the event of flight delays and/or schedule changes, they will provide guests with personalized assistance. To book flight reservations with our air partners, contact (206) 319-5011 and select the option for your destination to discuss flight details with our air colleagues. Upon ticketing, a fee will be charged.

Orbridge

Onboard Ocean Victory

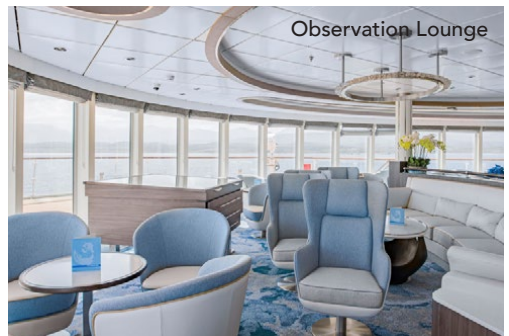
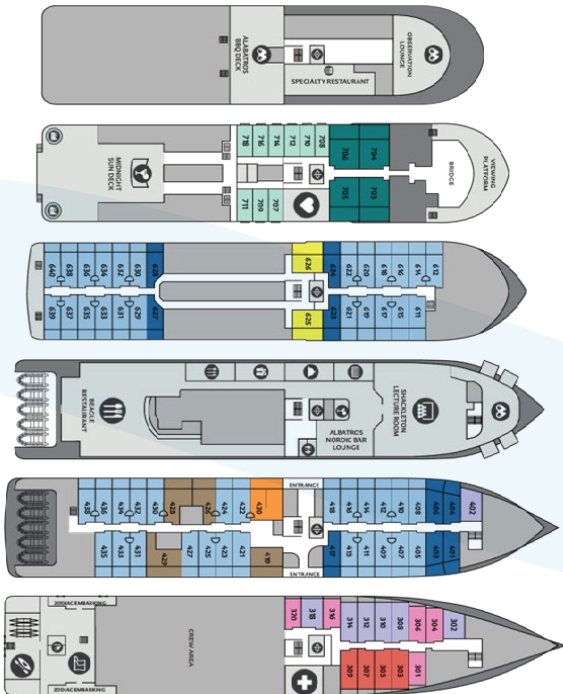
Accommodating 190 guests, *Ocean Victory* boasts a delicate balance between modern refinement and responsible travel. From the vessel's energy-efficient systems to its minimized carbon footprint, every detail has been meticulously crafted to ensure a minimal impact on the environments we explore.

This vessel holds the highest Polar code 6 and Ice class 1A designations, making it ideal for expedition cruising. Sturdy construction and a patented X-Bow design create excellent maneuverability and pleasant travel by reducing seasickness, noise and vibration.

All cabins are well-appointed and feature exceptional space, premium amenities and ocean views.



BBQ Deck



Observation Lounge



Dining



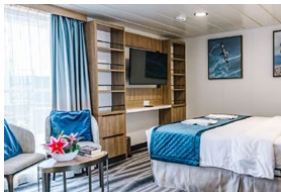
Albatros State Porthole (D)
Porthole window (located on Decks 3 and 4; approx. 139-236 sq.ft.)



French Balcony State (E)
Floor-to-ceiling windows (located on Deck 7; approx. 150 sq.ft.)



Balcony State (C)
Private balcony with floor-to-ceiling windows (located on Decks 4 and 6; approx. 193-269 sq.ft.)



Grand Balcony State (B2)
Sitting area and private balcony with floor-to-ceiling windows (located on Deck 4; approx. 269-322 sq.ft.)



Balcony Suite (B1)
Private balcony with floor-to-ceiling windows (located on Deck 6; approx. 279-344 sq.ft.)



Premium Suite (PS)
Two-room suite, additional sofa bed, table and chairs and private balcony with floor-to-ceiling windows (located on Deck 4; approx. 452 sq.ft.)



Single (G)
Porthole window (located on Deck 3; approx. 150 sq.ft.)



Triple (F)
Porthole window with additional sofa bed (located on Deck 3; approx. 193-236 sq.ft.)

Optional Pre-Tour Buenos Aires

Experience the vibrant and sultry beauty of Buenos Aires, Argentina's sophisticated capital city. Rich historic sites, charming shops and restaurants, and welcoming locals create a notable setting for leisurely exploration.

Day +1 EN ROUTE FROM U.S. *Travel time from U.S. may take up to two days depending on flight schedules.*

Day +2 **ARRIVE IN BUENOS AIRES, ARGENTINA** Upon arrival settle into your five-star accommodations with time to relax and freshen up. A thrilling evening awaits! Gather with fellow travelers for a gastronomic experience and live performance at one of Buenos Aires' most iconic theaters. Amidst the opulent surroundings dine on a tantalizing three-course dinner while musicians and performers prepare for the show.
Overnight: Alvear Palace Hotel (D)

Day +3 **BUENOS AIRES** Set out on a panoramic tour to discover some of the city's most iconic neighborhoods and landmarks. Travel through the trendy Palermo district, known for its colorful street art, chic boutiques and lush parks. Continuing to Recoleta—Buenos Aires' most glamorous neighborhood—stop at Recoleta Cemetery. En route to the Plaza de Mayo pass by 9th of July Avenue, known as the world's widest boulevard. A stop at the magnificent Colón Theatre offers the perfect opportunity for photos. Visit Café Tortoni to sample a traditional ham and cheese snack called the porteño. Afterward return to the Plaza de Mayo to see the Casa Rosada (Government House), the Metropolitan Cathedral and the Cabildo. The remainder of the day is at leisure.
Overnight: Alvear Palace Hotel (B, Snack)

Day +4 **BUENOS AIRES | FLIGHT TO USHUAIA | MAIN PROGRAM BEGINS** After breakfast take the complimentary group transfer to Aeroparque Jorge Newbery for a flight to Ushuaia to join the group for the main program. (B)

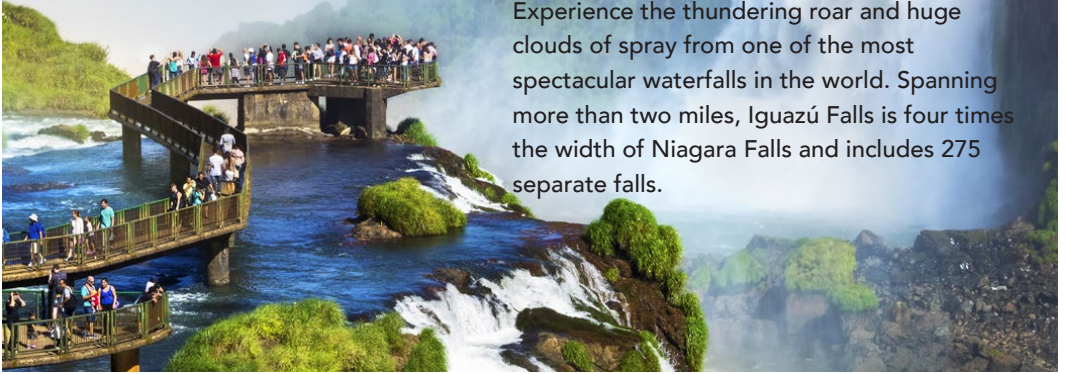
What's Included

- 2 nights hotel accommodations with breakfast each morning
- Special 3-course dinner and tango performance
- Panoramic city tour of Buenos Aires
- All gratuities and portorage
- All airport and hotel transfers for guests arriving and departing during the suggested times



Optional Post-Tour Iguazú Falls

Experience the thundering roar and huge clouds of spray from one of the most spectacular waterfalls in the world. Spanning more than two miles, Iguazú Falls is four times the width of Niagara Falls and includes 275 separate falls.



Day 12 **FLIGHT TO BUENOS AIRES** Upon arrival at Aeroparque Jorge Newbery take the group transfer to the hotel for a restful evening.
Overnight: Alvear Icon Hotel

Day 13 **FLIGHT TO IGUAZÚ FALLS | GUIDED TOUR** After an early breakfast take the group transfer to Aeroparque Jorge Newbery for the included two-hour flight to Cataratas del Iguazú International Airport. Upon arrival embark on a guided tour of the Argentinian side of Iguazú Falls. Hear the thunder of the crashing waters of the largest waterfall system in the world and feel the vapor against your skin. Choose from three different paths (depending on desired activity level): the lower path, the higher path and the "Devil's Throat." Listen as the local guide enlightens you about the geology, flora, fauna and local history of this amazing natural wonder.
Overnight: Gran Meliá Iguazú (B,L,D)

Day 14 **IGUAZÚ FALLS** Today guests are encouraged to explore the Argentinian side of the falls on their own. Alternatively join one of the following optional full- or half-day excursions (noted at right; view full details online) or enjoy leisure time on your own.
Overnight: Gran Meliá Iguazú (B)

Day 15 **IGUAZÚ FALLS | FLIGHT TO BUENOS AIRES | DEPART FOR U.S.** After breakfast take the complimentary group transfer to Cataratas del Iguazú International Airport for flights to next airports and connections to home. (B)

What's Included

- 1 night hotel accommodations in Buenos Aires and 2 nights luxury accommodations within Iguazú National Park
- 3 breakfasts, 1 box lunch and 1 dinner
- 2 guided tours of Iguazú Falls
- All gratuities and portorage
- All airport and hotel transfers
- Internal round-trip airfare between Buenos Aires and Iguazú Falls



Iguazú Falls Excursions

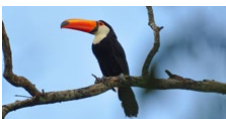
Rates are valid if excursion is pre-booked 21+ days prior to departure date.

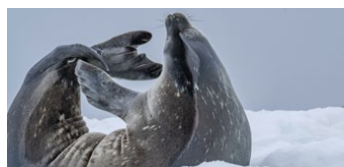
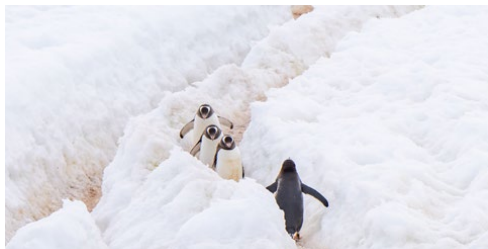
Gran Aventura Safari Boat Tour (Argentina Side of the Falls): \$110 per person

Brazilian Falls Tour^{††} (Brazil Side of the Falls): \$145 per person

Brazilian Falls Tour & Macuco Safari Boat Tour^{††} (Brazil Side of the Falls): \$240 per person

^{††}Subject to change due to potential Visa requirements.





JANUARY 9-20, 2026

Buenos Aires Pre-Tour: January 7-10, 2026

Iguazú Falls Post-Tour: January 20-23, 2026

RESERVE YOUR SPACE TODAY

Online: bucknell.orbridge.com

Phone: (866) 639-0079

Stateroom Category	Standard Rate	Special Rate*
Albatros State Porthole (D)	\$12,199	\$11,695
French Balcony State (E)	\$14,499	\$13,995
Balcony State (C)	\$16,499	\$15,995
Grand Balcony State (B2)	\$17,499	\$16,995
Balcony Suite (B1)	\$19,499	\$18,995
Junior Suite (A)	\$21,499	\$20,995
Premium Suite (PS)	\$24,199	\$23,695
Single Porthole (G)	\$18,499	\$17,995
Triple Porthole† (F)	\$9,899	\$9,395
Optional Activities	Rate Per Person	
Tierra del Fuego Tour	\$185	
Photography Program	\$495	
Sea Kayaking Outing	\$345	

DEPOSIT AMOUNT PER PERSON

\$500 pre-tour • \$2,500 main tour • \$500 post-tour

Buenos Aires Pre-Tour	Standard Rate	Special Rate*
Double	\$2,499	\$2,295
Single	\$3,199	\$2,995
Iguazú Falls Post-Tour	Standard Rate	Special Rate*
Double	\$3,499	\$3,295
Single	\$4,999	\$4,795

(see inside panel for post-tour excursions and rates)

*Special group rates; limited offer. All rates are per person in U.S. dollars based on double occupancy except where noted as Triple Porthole (per person rate; triple occupancy) or Single. Triple and Single availability limited. Unless noted otherwise, airfare is not included. **An exclusive Early Booking Bonus, Expedition Libraries are curated collections of useful resources and background reading tailored to this program. Place your deposit on or before the specified date, and one Expedition Library per room will be sent after receipt of final payment. Libraries may be purchased; call for details. Full Terms & Conditions at terms.orbridge.com. Any payment to Orbridge, LLC constitutes your acceptance of the terms and conditions set out therein, including but not limited to the cancellation and refund terms. CST#2098750-40 WST#602828994

Orbridge takes seriously the responsibility to minimize our global environmental impact. Each year we plant 100,000 trees in U.S. State Forests with afforestation needs as an ongoing initiative among our evolving sustainability efforts. Learn more at orbridge.com/going-green.



Bucknell University Alumni Association
90 University Ave.
Lewisburg, PA 17837

ANTARCTICA DISCOVERY

JANUARY 9-20, 2026

Special Alumni Rate:

Save more than **\$1,000** per couple

30-DAY REFUND GUARANTEE

What Guests Are Saying...

We felt that Orbridge went above and beyond our expectations. I was impressed with the concern of the staff for our safety at all times. I was also impressed that everyone seemed so interested and concerned that we have the best experience possible in all ways. The lectures were a wonderful addition. It allowed for meeting other people, as well as educating us on the continent, wildlife, and many other aspects of Antarctica!

~Sarah & Frank L., Norwood, NC

Bucknell University is pleased to offer information regarding this travel opportunity. Bucknell is not the trip provider, however, and is not responsible or liable for any aspect of the trip planning or delivery. Individuals with questions or concerns regarding the trip should contact the travel program vendor directly.



PRSR7 STD
U.S. POSTAGE
PAID
PERMIT NO. 825
SAN DIEGO, CA

Reserve by
June 27, 2025**

FREE EXPEDITION LIBRARY
AN EXCLUSIVE EARLY
RESERVATION BONUS