

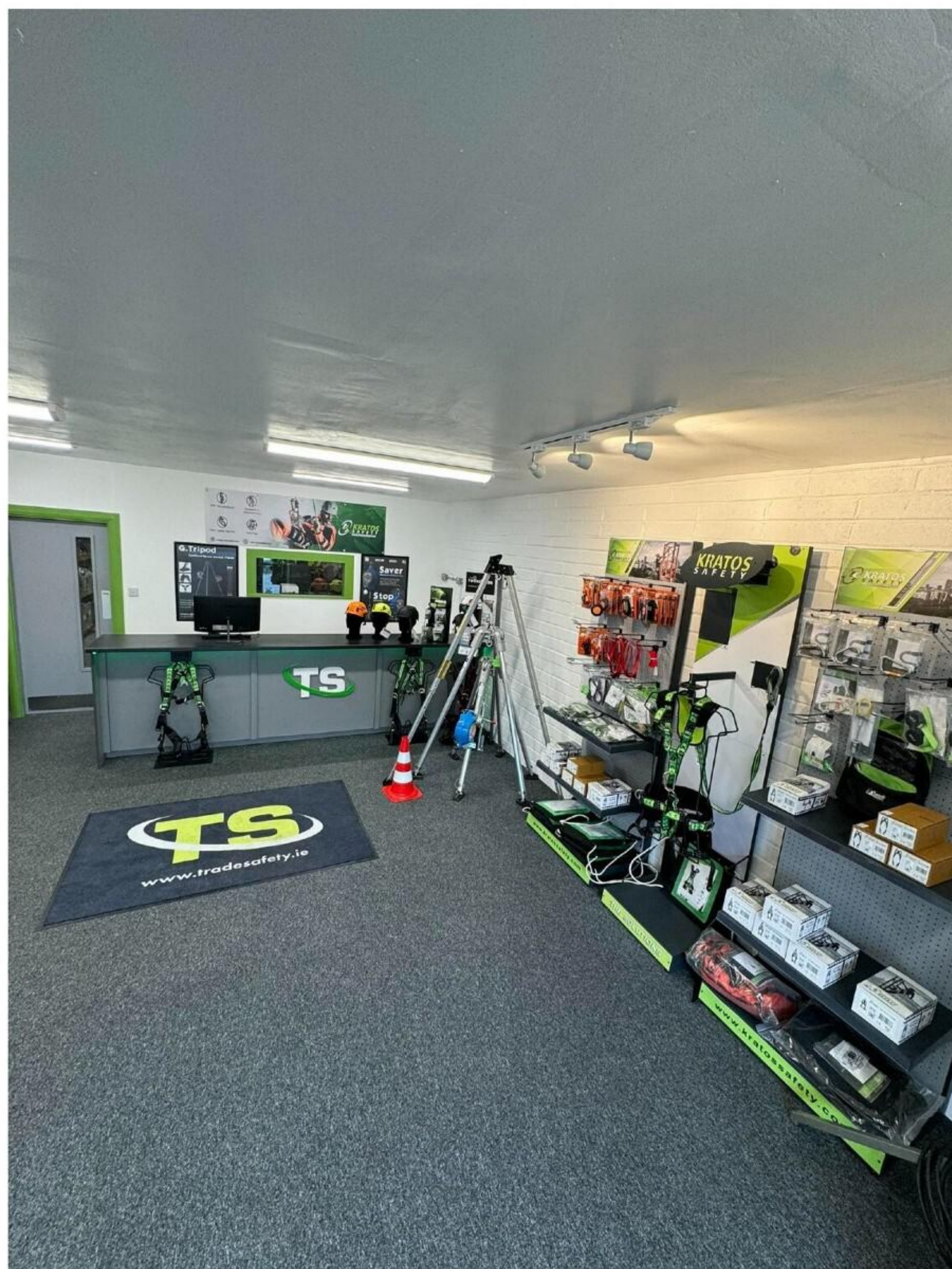
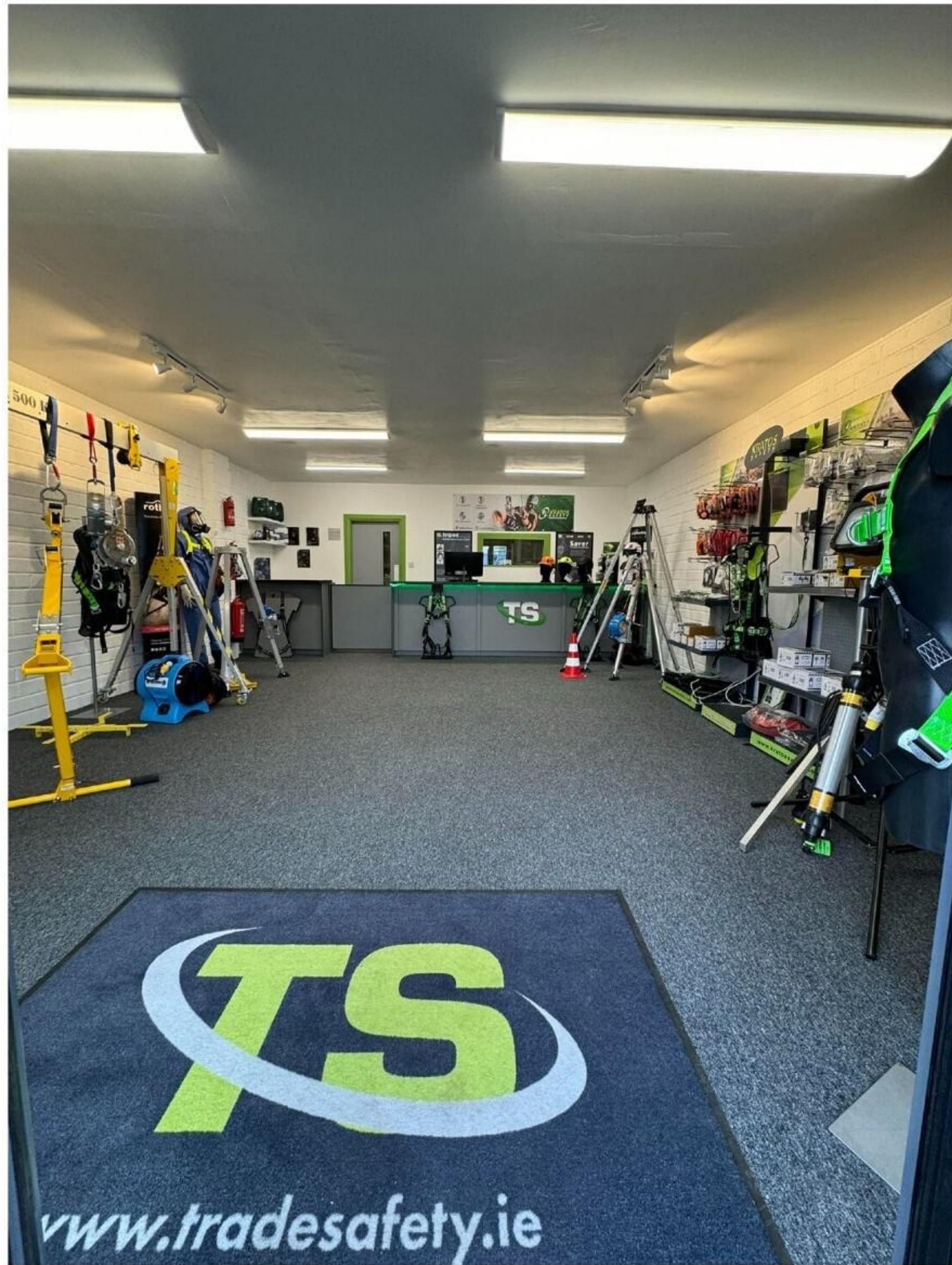
# **TS Trade Safety** LTD

Hire, Sales, Servicing, Training & Consultancy



**Catalogue 2024 - 2025**

Trade Counter..... 1  
Atex Lighting..... 2  
Anchor Points..... 5  
Temporary Anchors..... 7  
Webbing Slings..... 8  
Air Mover(s)..... 9  
Breathing Apparatus..... 10  
Breathing Air Trollies..... 11  
BA Trailer / Compressor..... 12  
Connectors..... 13  
Confined Space Kits..... 15  
Fall Arrest Blocks..... 16  
Gas Monitors..... 19  
Safety Harnesses..... 22  
Lanyards..... 25  
Guided Fall Arresters..... 28  
Portable Gantries..... 29  
Rescue Davits..... 30  
Rescue Equipment..... 41  
Respiratory..... 42  
Thurmac..... 45  
Safety Accessories..... 47  
    Fire, First Aid, Tool Lanyards, Helmets, Manhole Guards, Barriers & Safety Tags  
Skyhook..... 50  
Tripods..... 51  
Winches..... 53  
Servicing..... 54  
Training..... 55  
Consultancy..... 57



Come visit our recently opened Trade Counter where there is a wide range of Working at Height and Confined Space and Rescue equipment on display

Our sales staff will be available to help with any enquires and show products relevant, may be to your needs for Workplace Safety

# Atex Lighting



**ATEX generally refers to the hazard of explosive atmospheres occurring in the workplace due to the presence of flammable gasses or combustible dust mixed in air, which can give rise to the risk of explosion**

**Any area that is not classified as Zone 0, 1 or 2 is deemed to be non-hazardous, as flammable atmospheres are not expected to be present. Special precautions for the construction and use of electrical apparatus or for the control of non-electrical ignition sources are therefore not required although such an area may still be part of a greater restricted area**



Product Specifications	
Code	EXHT220
Name	Safe LED Head Torch
Zone	0
Lumens	200
Run Time	2.5 - 4.5 hours



Product Specifications	
Code	HL 1010400
Name	Newton X Headlamp
Zone	0
Lumens	216
Run Time	5 - 12 hours



Product Specifications	
Code	HL 1010100
Name	Newton 2 Headlamp
Zone	2
Lumens	400
Run Time	4 - 80 hours



Product Specifications	
Code	HL 1010300
Name	Newton 4 Headlamp
Zone	4
Lumens	600
Run Time	5 - 30 hours



Product Specifications	
Code	HL 1000200
Name	Rainbow 2 Headlamp
Zone	2
Lumens	250
Run Time	3 - 20 hours



Product Specifications	
Code	HL 1000100
Name	Rainbow 1 Headlamp
Zone	1
Lumens	350
Run Time	2 - 8 hours



Product Specifications	
Code	EXHT220
Name	Safe LED Flashlight
Zone	0,1,2
Lumens	270
Run Time	6.5 - 13 hours



Product Specifications	
Code	NSEXZOOM
Name	Ex Zoom LED Flashlight
Zone	0,1,2
Lumens	160
Run Time	6 - 13 hours



Product Specifications	
Code	NSSAFA-SL
Name	Rechargeable LED Searchlight
Zone	0
Lumens	370
Run Time	4 - 82 hours



Product Specifications	
Code	SA-SIMA-RSL 1000
Name	Sigma Rechargeable Searchlight
Zone	1
Lumens	890
Run Time	8 - 20 hours



Product Specifications	
Code	EX90L
Name	Explosion Proof Lighting
Zone	1,2
Lumens	720
Run Time	10 - 12 hours



Product Specifications	
Code	SAFATEX FLR
Name	Rechargeable Portable Floodlight
Zone	1,2
Lumens	1400
Run Time	10 hours



Product Specifications	
Code	M1
Name	Shindaiwa M1 Series
Zone	1,2
Lumens	9000
Run Time	Always



Product Specifications	
Code	ULTRA
Name	Site Bright Ultra Rechargeable
Zone	1
Lumens	3200
Run Time	8 hours



Non Atex Light

Product Specifications	
Code	SITE
Name	Site Bright Series Sphere
Zone	Non Atex
Lumens	2600
Run Time	Always



2m Tripod for Site Bright Series Sphere



Subframe for Site Bright Ultra Rechargeable



2m Tripod for Site Bright Ultra

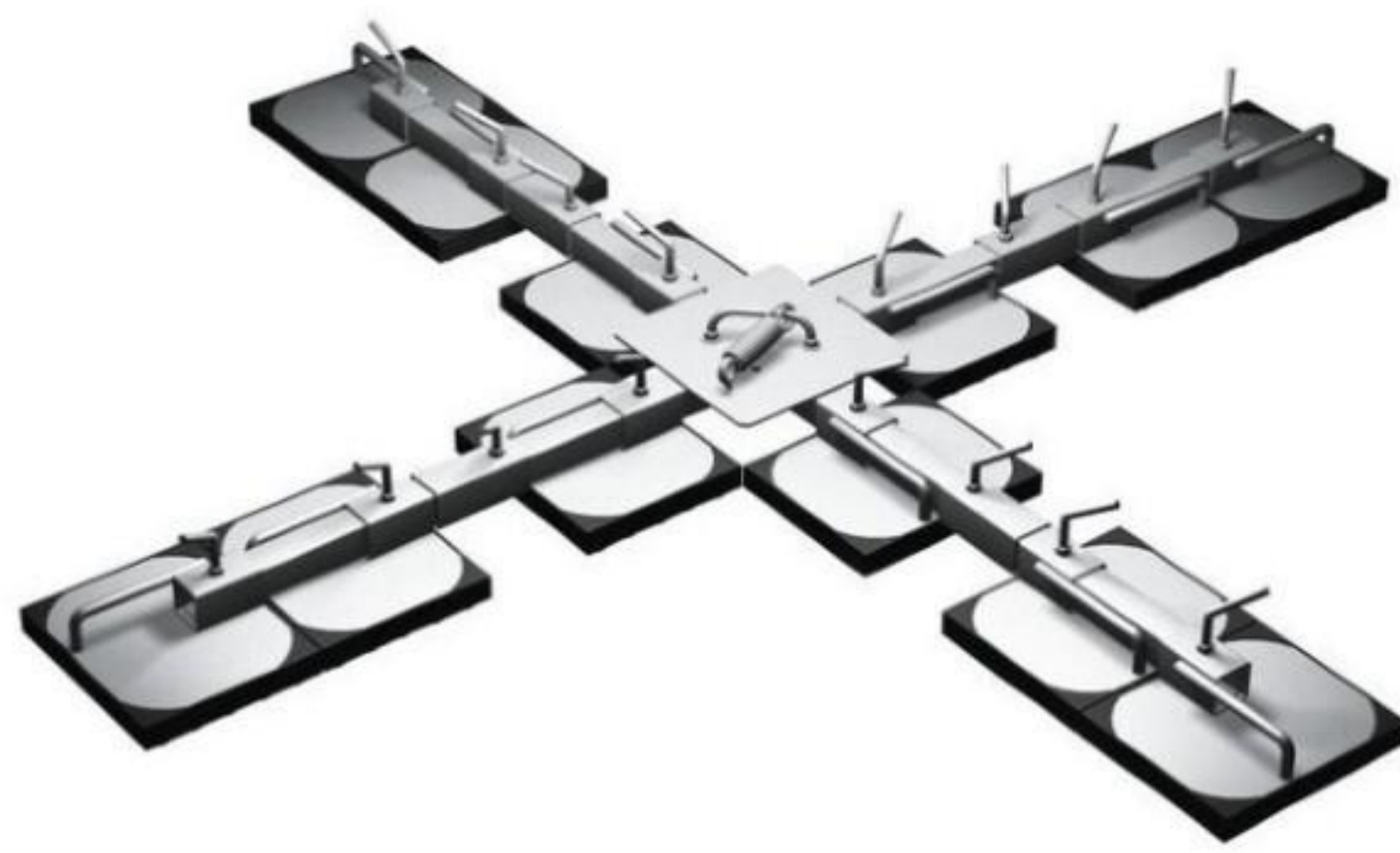
# Anchor Points



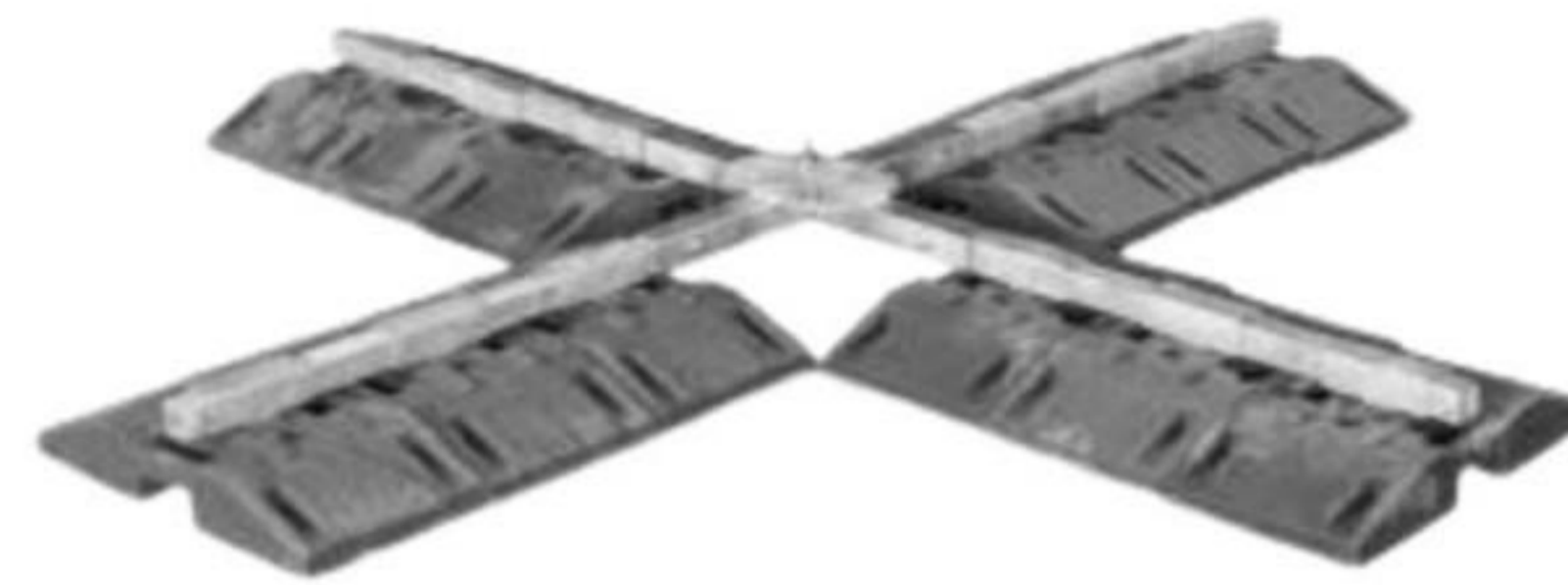
**An anchor point is a point of attachment for a fall arrest system. They are usually found at the top or on the side of a building and serve as a secure and safe way to ensure that those who are working on elevated surfaces will be protected from any potential falls**

**Anchor points are important as they allow for the installation of fall arrest systems. These are systems that prevent injuries and fatalities when working at height**





Product Specifications	
Code	IM 101
Name	Mobile Anchor
Dimensions	1550 x 1550 x 260 mm
Weight	220 kg
Number of Weights	12



Product Specifications	
Code	IM 200
Name	Mobile Anchor
Dimensions	3020 x 3020 mm
Weight	374 kg
Number of Weights	12



Product Specifications	
Code	DW 100
Name	Deadweight Trolley
Dimensions	1470 x 610 x 524 mm
Weight	208 kg
Number of Weights	10



Product Specifications	
Code	DW 200
Name	Abseiling A - Frame
Dimensions	2420 x 1766 x 2486 mm
Weight	348.5 kg
Number of Weights	12



Product Specifications	
Code	FA 600400
Name	Crossloop Anchor
Weight	3.75 kg
Dimensions	30 x 30 mm



Product Specifications	
Name	Wing Single Anchor Point
Thickness	158 mm
Work Load	1 Person



Product Specifications	
Name	Kite Anchor Point
Thickness	140 mm
Work Load	1 Person



Product Specifications	
Name	Green Point Anchor with Ballast
Max Weight	80 kg/m <sup>2</sup>
Work Load	Max 2 Person



Product Specifications	
Name	Glue Anchor Point
Equipped with a 360 degree swivel eyelet to facilitate work operations. Designed for installation on flat roofs	



Product Specifications	
Name	Anchor Points for Support
Suitable for installation on concrete and sheet metal structures, also on green roofs and non-drillable flat roofs	



Product Specifications	
Name	Block Anchor Point
Designed for flat roofs with inclines up to 5 degrees with OVC or bituminous final covering	

# Temporary Anchors



Manufactured for use on metal roofs these anchors are designed to clip to the edge of a metal deck roof sheet. They act as a temporary fall arrest anchor when working on the opposite side of the roof to where the anchor is fixed

These can be set up to provide fall protection before the roof is accessed



Product Specifications	
Code	ST030
Name	Anchor Point Device
Weight	16.5kg
Dimensions	714 x 230 x 197mm



Product Specifications	
Code	FA 600303
Name	Beam Anchor Trolley
Weight	3.90kg
Dimensions	80 - 250mm



Product Specifications	
Code	AT250
Name	Adjustable Beam Clamp
Weight	1.37 kg
Dimensions	440 x 100 x 45mm



Product Specifications	
Code	AT061
Name	Door Jam Anchor
Weight	3.2kg
Dimensions	440 x 100 x 45mm



Product Specifications	
Code	FA 6001900
Name	Toggle Anchor
Breaking Strength	23kN
Net Weight	0.55 kg
Material	Steel & Stainless Steel



Product Specifications	
Code	FA 6001800
Name	Concrete Anchor
Breaking Strength	12kN
Net Weight	0.150 kg
Material	Aluminium & Stainless Steel



Product Specifications	
Code	AZ700
Name	Anti Slip Webbing Connector
Static Strength	30 kN
Tape Width	45mm



Product Specifications	
Code	AZ910
Name	Webbing Sling
Static Strength	22 kN
Tape Width	21mm



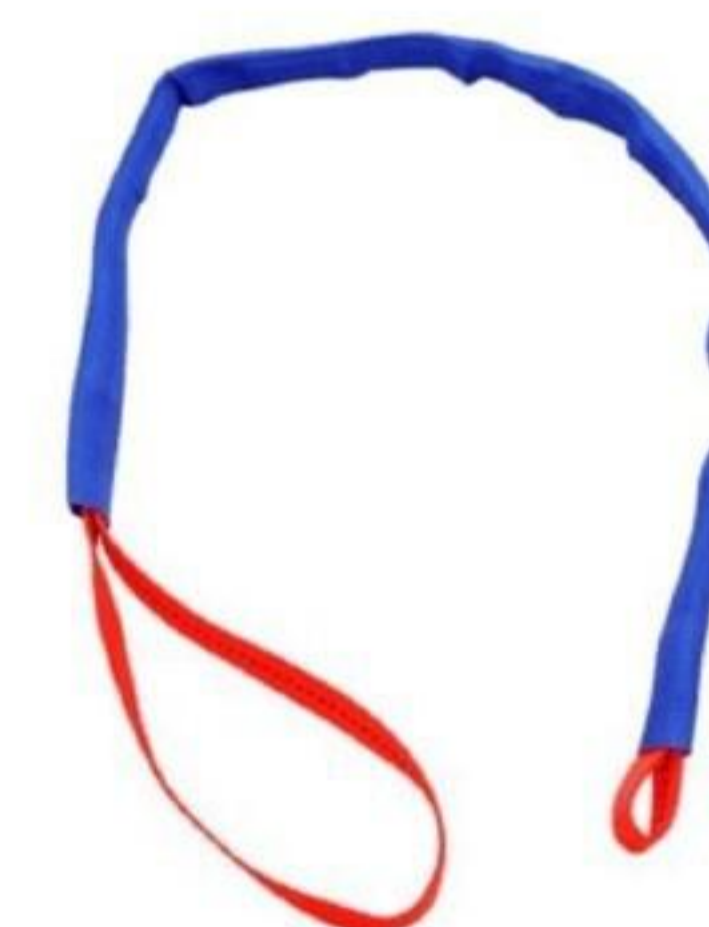
Product Specifications	
Code	FA 6000515
Name	Anchorage Round Sling
Static Strength	22 kN
Tape Width	1.5mm



Product Specifications	
Code	IKAB50
Name	Webbing Anchorage Sling
Length	0.5m
Approx Weight	0.10 kg



Product Specifications	
Code	IKAB100
Name	Webbing Anchorage Sling
Length	1m
Approx Weight	0.20 kg



Product Specifications	
Code	IKAB150
Name	Webbing Anchorage Sling
Length	1.5m
Approx Weight	0.25 kg

# Air Movers



**This can be used as a stand-alone item to simply cause a through airflow or be linked to trunking to introduce clean air into the system from outside of the confined space**

**These units can be much more productive than a traditional fan and do not pose the same electrical issues**



Product Specifications	
Code	TB3850
Name	Vent TB 3850
Voltage	110V
Air Flow	3850 m3/h



Product Specifications	
Code	TB7550
Name	Vent TB 7550
Voltage	110V
Air Flow	7560 m3/h



Product Specifications	
Name	Air Mover Ducting
Ducting	Sold Separately
Lengths	5m / 7.5m / 10m



Product Specifications	
Name	Venturi Air Mover
<ul style="list-style-type: none"> <li>- Powered by compressed air or saturated steam</li> <li>- Tough and Durable</li> <li>- Fits Standard API Openings</li> <li>- 3 sizes Available – 13cm, 20cm, 30cm</li> </ul>	

## Atex Air Mover



Product Specifications	
Code	SAF35
Name	SA Atex Air Mover
Airflow	5179 m <sup>3</sup> /hr
Weight	22 kg



Product Specifications	
Code	SAFD
Name	Anti Static Ducting
Duct Diameters	10cm - 20cm - 30cm - 40cm
Duct Lengths	5m / 10m

# Breathing Apparatus



**Breathing apparatus is provided to help you safely evacuate a confined space if the gas monitoring equipment indicates a problem with the atmosphere**

**It will also help sustain life if you get into difficulties whilst in a confined space, until you can be rescued by the emergency services**





Product Specifications	
Name	Honeywell X-Pro Open Circuit
Weight	3.9kg
Alarm Activation	55 + 5 Bar
Alarm Volume	>90 DBA



Product Specifications	
Name	Aeries Comfort Type 2
Weight	4.9kg
Alarm Activation	55 + 5 Bar
Alarm Volume	>90 DBA



Product Specifications	
Name	Breathing Air Mask
Material	Silicone Outer
Demand Valve	Quick Fit Connection
Sizes	Medium / Large



Product Specifications	
Name	Cenpac
Material	Neoprene
Air Duration	15.20 & 30 minutes
Cylinder	Steel or Composite



Product Specifications	
Name	Escape Set
Duration	15 Minute
Pressure in Use	200 Bar
Temperatures for Use	15°C/+60°C



Product Specifications	
Name	Semmco Head Set
Duration	10 Minutes
Breathing Bag Volume	6 Litres
Temperatures for Use	-6°C-+50°C



Product Specifications	
Name	Scott Breathing Air Trolley
Cylinder Band	Stainless Steel
Cylinder	Steel or Composite



Product Specifications	
Name	Drager Breathing Air Trolley
Weight	40.5kg
Temperature	-32 - 70°C



Product Specifications	
Name	Honeywell Breathing Air Unit
Weight	50kg
Dimensions	510 x 1170 x 780mm



Product Specifications	
Name	Scott Flite Bandolier
First Breath	-20 to -30 mbar
Bypass Flow	150 litres / Minute Nominal



Product Specifications	
Name	Horizontal Breathing Air Trolley
Breathing Air Trolley 12 Hour Supply	
Easy to Move Using Wheels	
Two 80 Litre Cylinders	



More info on Page 44\*

Product Specifications	
Name	TH3 Optrel Swiss Air System
3 Flow Rates	
14 Hour Battery Life	
No Face Fit Required	



Compressor



BA Trailer

Fleet of BA Trailers + Compressor



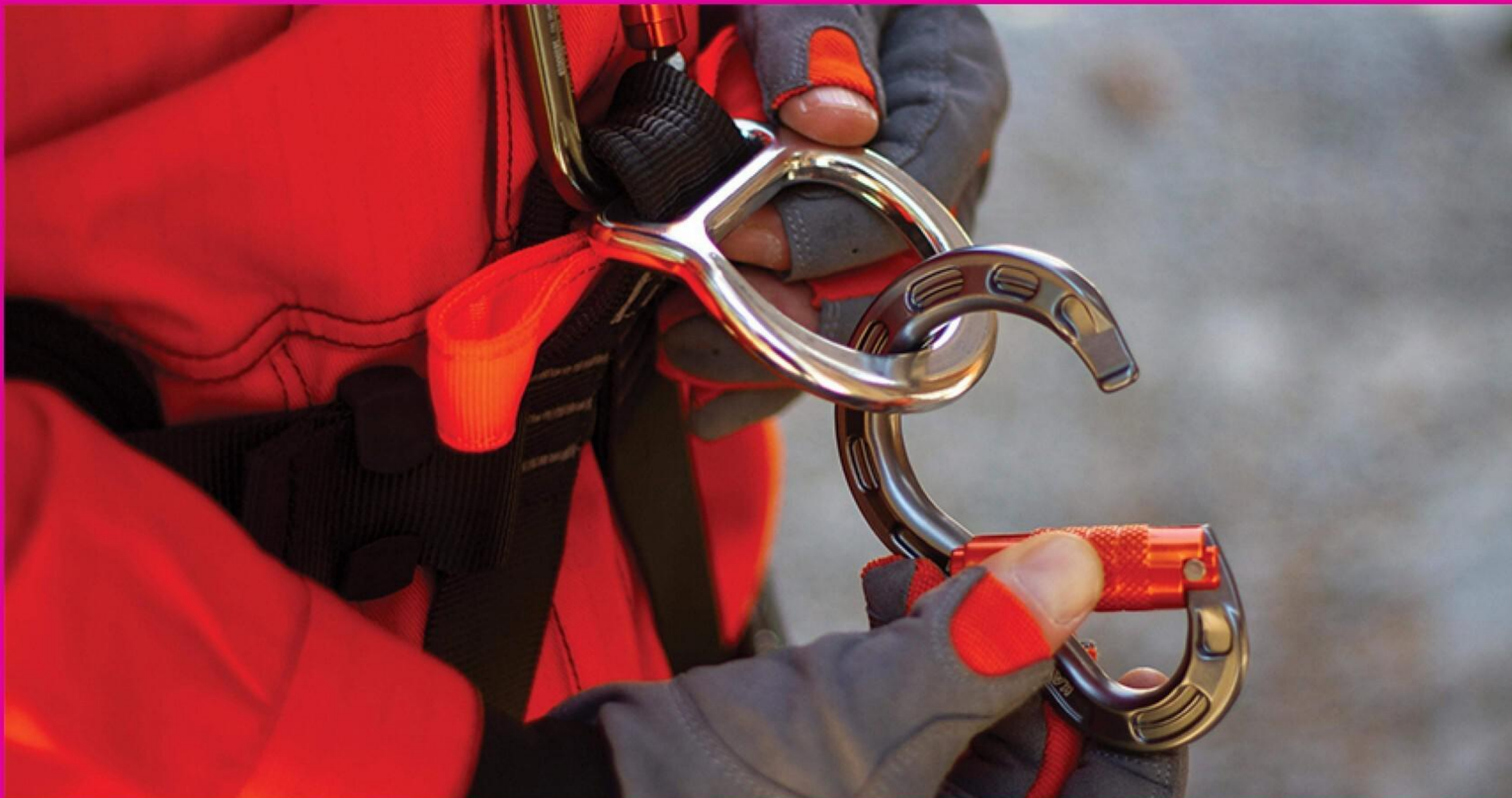
If you need clean Breathing Air for Confined Space works Trade Safety carry a wide range of options to suit the duration of airtime you require

For short term use we have SCBA units which offer of 30 / 35mins airtime, small and Large Breathing Air Trolley units offering 1 -12 hours airtime. For long duration our Breathing Air Trailers offer 39 hours airtime and our Breathing Air Compressor provides unlimited airtime

SCBA sets include 1 no Composite 200/300 bar Cylinder. Trolley units include 25m Hose + Flite Bandolier with Emergency Escape. BA Trailer & BA Compressor include 2 x 50m Hose Reel and 2 x Flite Bandoliers with Emergency Escape. Extra accessories can be added to all systems to suit customer requirements

For Further information contact our office on 057 9330782

# Connectors



A connector is designed to be weighted along its primary axis, with the gate closed and locked. This is the connectors strongest position. All other positions increase the risk of a break or accidental opening, and therefore present a danger to the user

Connectors move around when used, are pulled by the rope, bump up against the rock, and vibrate when you are on the move.

Regularly check that the carabiner has not moved into a dangerous position and that the locking system stays closed in spite of vibrations



Product Specifications	
Code	AZ011
Name	Detectable Connection
Weight	160g
Opening	18mm



Product Specifications	
Code	AZ011T
Name	Twist Lock Karabiner
Weight	173g
Opening	17mm



Product Specifications	
Code	AZ014T
Name	Connection with Twist Lock
Weight	100g
Opening	24mm



Product Specifications	
Code	AZ014DT
Name	Triple Lock Karabiner
Weight	105g
Opening	24mm



Product Specifications	
Code	AZ111
Name	Light Twist Lock Karabiner
Weight	205g
Opening	45mm



Product Specifications	
Code	AZ022
Name	Scaffold Hook
Weight	500g
Opening	50mm



Product Specifications	
Code	RGK15
Name	Karabiner with Captive Pin
Weight	215g
Opening	12mm



Product Specifications	
Code	RGK2P
Name	Karabiner with Retainer Pin
Weight	197g
Opening	17mm



Product Specifications	
Code	FA 50101117T
Name	Screw Locking Karabiner
Weight	160g
Opening	18mm



Product Specifications	
Code	FA 5030222
Name	Triple Action Locking
Weight	80g
Opening	21mm



Product Specifications	
Code	FA 5021460
Name	Rebar Hook with Latch
Weight	100g
Opening	60mm

# Confined Space Kits



Confined Space Kits provides basic equipment to assist in confined space entry and egress. The presence of a hazardous atmosphere is a major threat to workers in confined spaces



Product Specifications	
Tripod	Kratos FA 6000100
Winch	Kratos FA 600320
Harness	P 10 R Rescue
Gas Monitor	GMI PS200
Escape Set	Honeywell 15 minute



Product Specifications	
Tripod	GSE 230
FAB	G-Saver II 14 / 20 / 34mm
Harness	P 10 R Rescue x2
Gas Monitor	Watchgas SST4 / BW Micro XL
Escape Set	Honeywell 15 minute x2



Product Specifications	
Tripod	Kratos FA 6000100
FAB	FA 2040210
Winch	Kratos FA 600320
Harness	P 10 R Rescue
Gas Monitor	Watchgas SST4 / BW Micro XL
Escape Set	Honeywell 15 minute



# Fall Arrestors



**Fall Arrestors are anchored above the user, it gives the user a safe are of work**

**The retracting line pays in and out of the device as the user moves. In the event of a fall, a break engages, arresting the fall of the user with a controlled deceleration force**



Product Specifications	
Code	WR025
Name	Retractable Fall Arrester
Weight	0.85kg
Length	2.35m



Product Specifications	
Code	FA 2050030
Name	Kratos Mini Block
Weight	1.250kg
Length	2m



Product Specifications	
Code	HWBZ
Name	IKAR HWB
Weight	1.1kg
Length	2m



Product Specifications	
Code	DWR 0402
Name	Protekt Twin Mini Block
Static Strength	15kN
Length	2m



Product Specifications	
Code	HWB DW
Name	IKAR HWB
Weight	2.26kg
Length	1.8m



Product Specifications	
Code	FA 2050002
Name	Kratos Twin Mini Block
Weight	2.8kg
Length	2m



Product Specifications	
Code	WR100
Name	Protekt Webbing
Weight	1.8kg
Length	6m



Product Specifications	
Code	CR250V - HV
Name	Self Locking Device
Weight	4.9kg
Length	10 / 15m



Product Specifications	
Code	HES 18
Name	IKAR Galvd Cable
Weight	6.9kg
Length	18m



Product Specifications	
Code	FA 2050406
Name	Helixon S Wire Webbing
Weight	3.21kg
Length	6, 10, 12, 15, 20m



Product Specifications	
Code	FA 2040207
Name	Helixon S Wire Rope
Weight	4.08kg
Length	7, 10, 15, 20m



Product Specifications	
Code	FA 2040110
Name	Wire Rope Retractable
Weight	7.40kg
Length	10 / 20m



Product Specifications	
Code	FPED
Name	Honor Descender Unit
Weight	18.7kg
Length	15 / 33m



Product Specifications	
Code	FAB
Name	Honor FAB
Weight	19.6kg
Length	15m



Product Specifications	
Code	HAS
Name	IKAR Galvd Cable
Weight	6.9kg
Length	9 / 18 / 30m



Product Specifications	
Code	HRA
Name	IKAR HRA
Weight	7kg
Length	12 / 18 / 30m



Product Specifications	
Code	SRL-R
Name	G Saver Retractable Fall Arrester
Weight	12kg
Length	14, 20 and 30m

# Gas Monitors



Confined space gas detectors are designed to ensure occupational health and safety compliance and to protect personnel from exposure to harmful fumes, gases, vapours or lack of oxygen. A personal multi gas monitor can also be used to track the concentration of combustible gases and alert users if concentrations approach the Lower Explosive Limit (LEL). Therefore, mitigating the risk of potentially fatal ignition



Product Specifications	
Name	WatchGas T4
Gases Detected	H2S, CO, LEL and O2



Product Specifications	
Name	GMI PS200
Gases Detected	LEL, O2, CO and H2S



Product Specifications	
Name	BW Gas Alert Micro Clip XL
Gases Detected	CO, O2, H2S and LEL



Product Specifications	
Name	WatchGas QGM 4
Gases Detected	O2, CO, H2S, SO2, NH3, H2 and NO2



Product Specifications	
Name	WatchGas PID (VOC)
Gases Detected	O2, CO2, CO, H2S, SO2, CL2, CLO2, NO, NO2, H2 + more



Product Specifications	
Name	BW Gas Alert Max II
Gases Detected	H2S, CO, O2 and LEL



Product Specifications	
Name	GMI Multi Gas Detector
Gases Detected	LEL, O2, CO, H2S and VOC



Product Specifications	
Name	BW Gas Alert Quattro
Gases Detected	H2S, CO, O2, LEL



Calibration Gas

34 and 58 Ltr Available



Calibration Stations



Gas Monitor Chargers



Gas Monitor Regulators



O2, LEL, H2S and CO2 Sensors

## Specialised Gas Monitors



Product Specifications	
Name	Gascoseeker-2-500



Product Specifications	
Name	WatchGas SST1 Single Gas
Gas Detected	H2S, SO2, CO, O2



Product Specifications	
Name	WatchGas PDM
Gas Detected	H2S, O2, CO



Product Specifications	
Name	WatchGas PDM+
Gas Detected	H2S, O2, CO2, SO2



Product Specifications	
Name	WatchGas PDM Pro
Gas Detected	CO2



Product Specifications	
Name	WatchGas UNI
Gas Detected	H2S, O2, CO2, SO2 and CL



Product Specifications	
Name	BW Solo Gas Detection
Gas Detected	H2S, CO2, O2



# Safety Harnesses



Harnesses are used in almost all types of confined space work because safety teams are required to have a method of removing an injured worker in the event of an accident. Harnesses can also be utilized as a fall protection device. By wearing the harness, comprised of a system of straps and restraints, the risk of injury caused by a potential fall is reduced



Product Specifications	
Code	P11
Name	Protekt Safety Harness
Function	Manual Buckles
Connection Points	2 Front + Rear



Product Specifications	
Code	FA 1010500
Name	Kratos Full Body Harness
Function	Adjustable Shoulder + Thigh Straps
Connection Points	2 Front + Rear



Product Specifications	
Code	G1130
Name	Skylotec ION
Function	Click Buckles
Connection Points	2 Front + Rear



Product Specifications	
Code	G1131
Name	Skylotec Trion
Function	Click Buckles
Connection Points	4 Allow Individual Adjustments



Product Specifications	
Code	P500
Name	Protekt Safety Harness
Function	Automatic Buckles
Connection Points	1 Rear



Product Specifications	
Code	P600
Name	Protekt Work Positioning Harness
Function	Automatic Buckles
Connection Points	3 Front + Rear + Front (Rail)



Product Specifications	
Code	P10R Nize
Name	Protekt Rescue Harness
Function	Click Buckles
Connection Points	2 Chest + Rear



Product Specifications	
Code	FA 1010600
Name	Kratos Rescue Harness
Function	Click Buckles
Connection Points	2 w/ Rescue Extension Loop



Product Specifications	
Code	FA 1011400A
Name	Kratos Rescue Harness
Function	Combination Buckles
Connection Points	3 Shoulder + Rear



Product Specifications	
Code	P70 MX
Name	Protekt Suspension + Work Positioning Harness
Function	Automatic Buckles
Connection Points	2 Chest + Rear



Product Specifications	
Code	FA 1020700
Name	Kratos Body Harness
Function	Automatic Buckles
Connection Points	2 Front + Side



Product Specifications	
Code	G1132
Name	Skylotec Ignite
Function	Click Buckles
Connection Points	4 Dorsal + Sternal + Pole + Frontal



Product Specifications	
Code	FA 1010900
Name	Kratos Atex Rated Harness
Function	Combination Buckles
Connection Points	2 Dorsal + Sternal



Product Specifications	
Code	FA 1011000
Name	Kratos Flame Retardant Harness
Function	Automatic Buckles
Connection Points	2 Chest

### MEWP Kit



Product Specifications	
Name	Kratos Restraint at Work Kit
This kit includes: - Body Harness FA 1010200 - Kernmantle Rope Lanyard Length 1.50m FA 5010117 - Two Steel Screw Karabiners FA 5010117 - A jute bag is supplied with this kit	

### Scaffold Kit



Product Specifications	
Name	Scaffold Fall Protection Kit
This kit includes: - Body Harness FA 1010300 - Energy Absorbing Webbing Lanyard Length 1.80m FA 3030418 - A jute bag is supplied with this kit	

# Lanyards



Lanyards and energy absorbers are connected to an anchorage point and to the back D-ring of a harness

Their role is to prevent injuries in the event of a fall. Lanyard with shock pack, these lanyards are made from resistant nylon fibres to which are attached a shock absorbing pack



Product Specifications	
Code	AMB LB101
Name	Protekt Rope Lanyard
Type	Kernmantle
Diameter	10.5mm
Length	2m
Attachments	(1) 50m Scaff Hook + (1) 18m Karabiner



Product Specifications	
Code	FA 3040018
Name	Kratos Forked Energy Absorbing Lanyard
Type	Polyester Webbing
Diameter	30mm
Length	1.8m
Attachments	(2) 50m Scaff Hook + (1) 18m Karabiner



Product Specifications	
Code	FA 3030418
Name	Kratos Energy Absorbing Webbing Lanyard
Type	Polyester Webbing
Diameter	44mm
Length	1.8-2m
Attachments	(1) 50m Scaff Hook + (1) 18m Karabiner



Product Specifications	
Code	AMB LB 102
Name	Protekt Twin Rope
Type	Kernmantle
Diameter	12mm
Length	2m
Attachments	(2) 50m Scaff Hook + (1) 18m Karabiner



Product Specifications	
Code	FA 3030620
Name	Kratos Antistatic Energy Absorbing
Type	Polyester Webbing
Diameter	44mm
Length	2m
Attachments	(1) 60m Scaff Hook + (1) 22m Karabiner



Product Specifications	
Code	FA 3030520
Name	Kratos Fire Retardant
Type	Webbing
Diameter	44mm
Length	2m
Attachments	(1) 50m Scaff Hook + (1) 18m Karabiner



Product Specifications	
Code	L055
Name	Skylotec Proflex Y Twin
Type	Polyester / Aluminium
Rescue Loop	Yes
Length	1.8m
Attachments	(2) 60m Scaff Hook + (1) 22m Karabiner



Product Specifications	
Code	L0574
Name	Skylotec Pro Tie Back
Type	Polyester Webbing
Rescue Loop	Yes
Length	1.8m
Attachments	(1) 22m Scaff Hook + (1) 22m Karabiner



Product Specifications	
Code	L013
Name	Skylotec Twin Rope
Type	Polyamide
Rescue Loop	Yes
Length	12mm
Attachments	(1) 60m Scaff Hook + (1) 29m Karabiner



Product Specifications	
Code	AF500
Name	Protekt Restraint Work Position
Type	Polyester Webbing
Diameter	30mm
Length	2m
Attachments	(1) 50m Scaff Hook + (1) 18m Snap Hook



Product Specifications	
Code	LB 101HV
Name	Protekt Rope Lanyard
Type	Kernmantle / Braided
Diameter	12mm
Length	1-1.5m
Attachments	(1) 50m Scaff Hook + (1) 18m Snap Hook



Product Specifications	
Code	FA 3030418
Name	Kratos Webbing Lanyard
Type	Polyester Webbing
Diameter	35mm
Length	1.8m
Attachments	(1) 50m Scaff Hook + (1) 18m Karabiner



Product Specifications	
Code	FA 4090120
Name	Kratos Webbing & Ring Adjuster
Type	Polyester Webbing
Diameter	30m
Length	2m
Attachments	(1) 22m Snap Hook + (1) 18m Karabiner



Product Specifications	
Code	FA 40900320
Name	Kratos Work Positioning w/ Grip Adjuster
Type	Polyamide Webbing
Diameter	12m
Length	2m
Attachments	(1) 22m Snap Hook + (1) 18m Karabiner



Product Specifications	
Code	SK12
Name	Skylotec Ergo Grip
Type	Rope Polyamide
Diameter	12mm
Length	2m
Attachments	(1) 20m Karabiner



Product Specifications	
Code	SK16
Name	Skylotec Ergo Grip
Type	Rope Polyamide
Diameter	16mm
Length	1.8m
Attachments	(1) 50m Scaff Hook



## Horizontal

### Kratos Temporary Lifeline FA 600700

Adjustable length from 5 to 20 mtr

Secures an operator throughout his travels

Horizontal lifeline in 30 mm polyester webbing

Forked ends in order to:

- Either anchor to a structure without the need to add anchorage sling
- Or hang directly on adapted anchorage point



### Kratos Retractable Lifeline FA 6003318

Retractable wire rope horizontal lifeline, max. length 18 m, extremely easy to install, lightweight, ready to use

- Quick dismantling and re-installation on a new site thanks to the inbuilt winch

- Durable and high strength polymer casings, with carrying handle having a tension indicator

- Inbuilt shock absorption mechanism to limit the impact forces during fall arrest

- The cable has a swivel snap hook in order to avoid the twisting of the rope

- Can be simultaneously used by 1 or 2 people



## Vertical

### Kratos Guided Fall Arrester FA 20110210/220

Length of the rope : 10 metres

Breaking strength : > 15 kN

Works on 12 mm Diameter Polyester Kernmantle Rope Anchorage Line



# Portable Gantries



Portable Gantry is the ultimate confined space access equipment. It is lightweight, portable, and can be quickly deployed for use in emergency rescue situations



**Aluminium Gantry Crane (LSB + KSB Series) is a complete, lightweight, fully customizable, portable device designed for lifting loads up to the related working load limit (WLL).**

**WLL is always indicated on the beam, device can be used in a variety of lifting applications such as, drainage wells, silos, rooftop, lift-shaft, wastewater and many more. KSB + LSB.**

**Suitable chain blocks or winches may be used.**

**For Lifting Loads External Trolley Must Be Used KSB + LSB device can be used for personal protection purposes as component of personal protective equipment against fall from height**

**These Gantries are ideal for lifting applications such as confined spaces, silos, rooftops, lift-shafts, water treatment works, clean environments and many more**

**The KSB Gantry is supplied in 3x lightweight parts, a beam and 2x frames for easy handling and transportation**

**Another key feature of the KSB Gantry is the option to purchase different length beams (2mtr and 4mtr) to use with the frames. LSB (2mtr and 7mtr)**

**Fully adjustable in height from 2100 - 3000mm (support height)**

**Easy to erect**

**A-Frames are supplied with 360° castors with brake**

**Beam is supplied with External Trolley for lifting applications**

**SWL KSB: 500kg SWL: LSB 500kg - 2000kg**

**Support height: 2100 - 3000mm**

**Total beam length KSB: 3mtrs LSB: 2mtrs - 7mtrs**

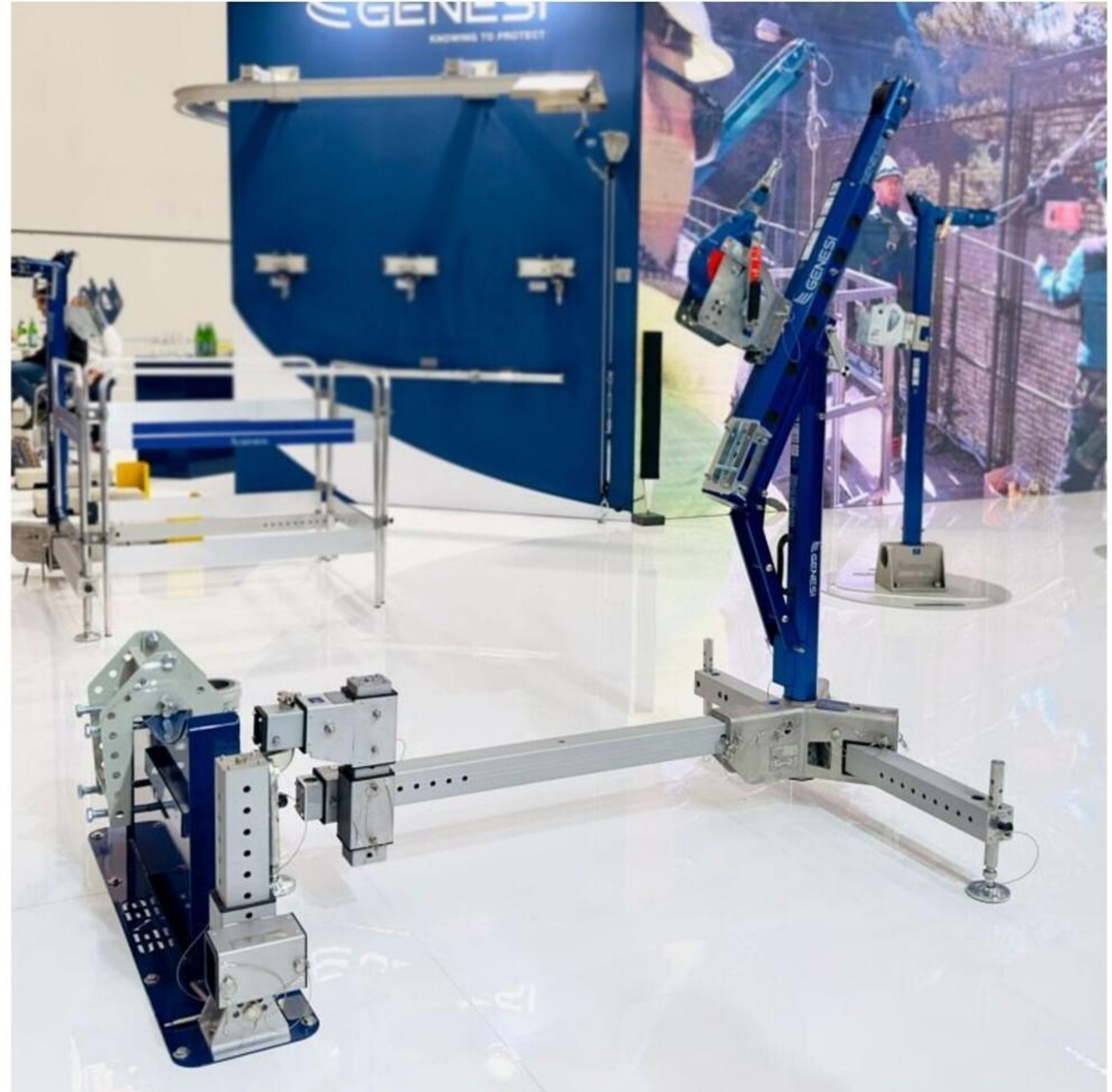
**Total weight of Gantry KSB: 58kg LSB: 500kg - 750kg**

# Rescue Davit Systems



**Davit Arm Systems for Confined Space Applications. Davit arm systems are commonly used to raise, lower, and suspend personnel performing routine work duties or to facilitate rescues in vertical confined space applications such as vaults, manholes, and pump stations**

**A manual or mechanical winch to the davit arm system, personnel can be lowered into the confined space or extracted with relative ease**



Genesi are entering the Davit market with their Genesi Blue SE range of davit arms

Genesi has more than 15 years protecting life and dreams of people working at height and in confined spaces

Genesi's mission is to be the arm that saves life and protects the dreams of those who work

Included here are:

- SC6NW
- SC12NW
- SC6F
- SC3
- SCTY



**Genesi SC6NW**



Genesi SC6NW is a mobile anchor device consisting of an extendable arm with a reach of about 600 mm and SC6-PNW support mast, the system is designed to ensure safe vertical access in confined spaces and with limited access and exit



**Genesi SC12NW**



Genesi SC12NW is a mobile anchor device consisting of an extendable arm with a reach of over 1200 mm and SC12-PNW support pole, the system is designed to make vertical access safe in confined spaces and with limited access and exit

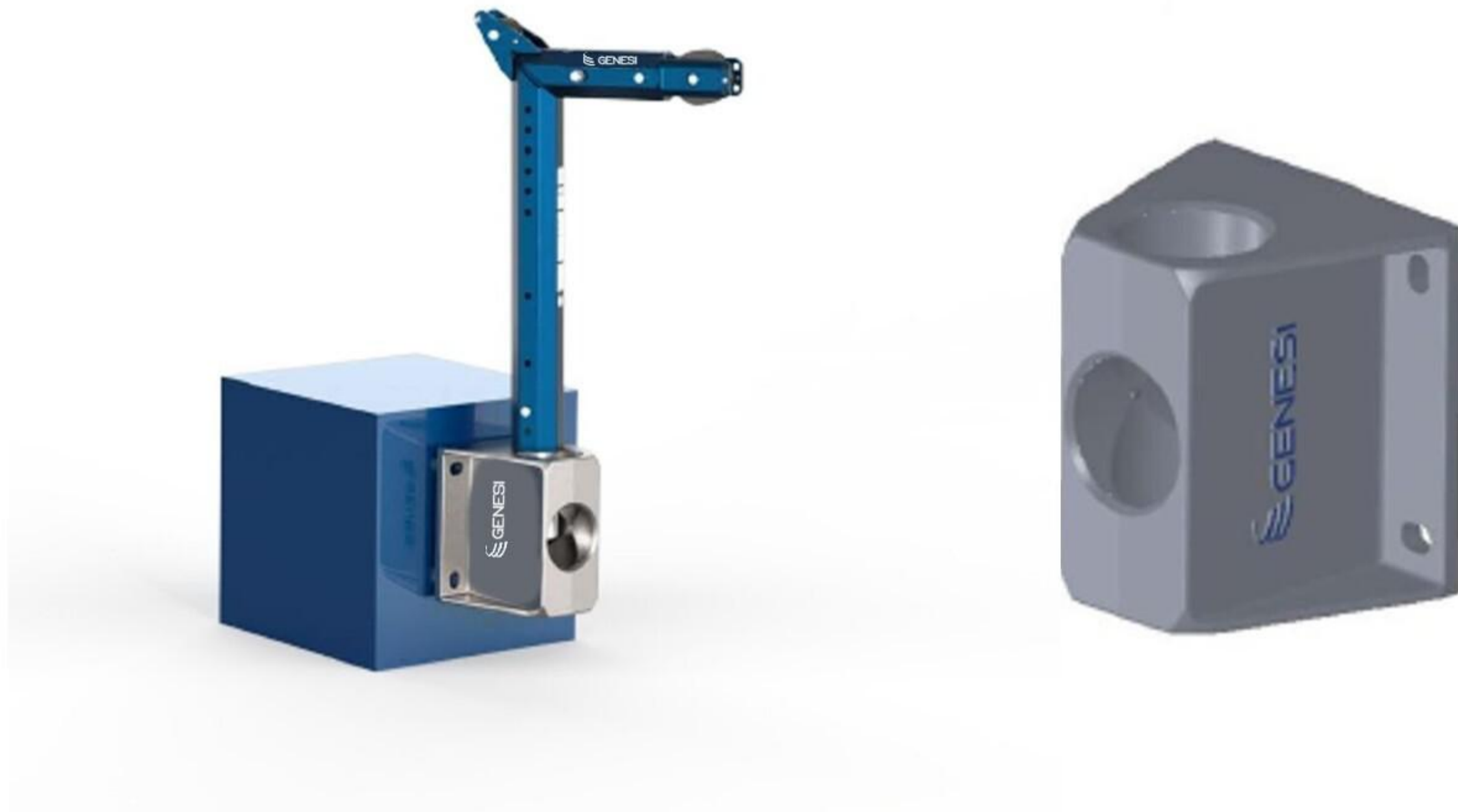


**Genesi SC6F**



Genesi SC6F is a mobile anchor device consisting of a fixed arm with a reach of over 600 mm and an integrated pole

## GENESI SC3



Genesi SC3 is a compact mobile anchor device, consisting of a fixed arm with a reach of about 300 mm and an integrated mast, particularly suitable for making safe vertical access in confined spaces that have limited space outside

## GENESI SCTY



The system has been designed for great flexibility and, depending on the geometry of the access, can be configured or installed to allow for optimum stability to ensure safe access within the confined space or environment with restricted access. The Genesi SCTY system can be set in three different configurations without the need to use specific tools

### Config 1 Self-supporting configuration:



Mounting the elements in a self-supporting configuration allows you to obtain a stable and safe support for installing one of the mobile devices provided and fixing the elements with security PINs

### Config 2 Ground fixing configuration

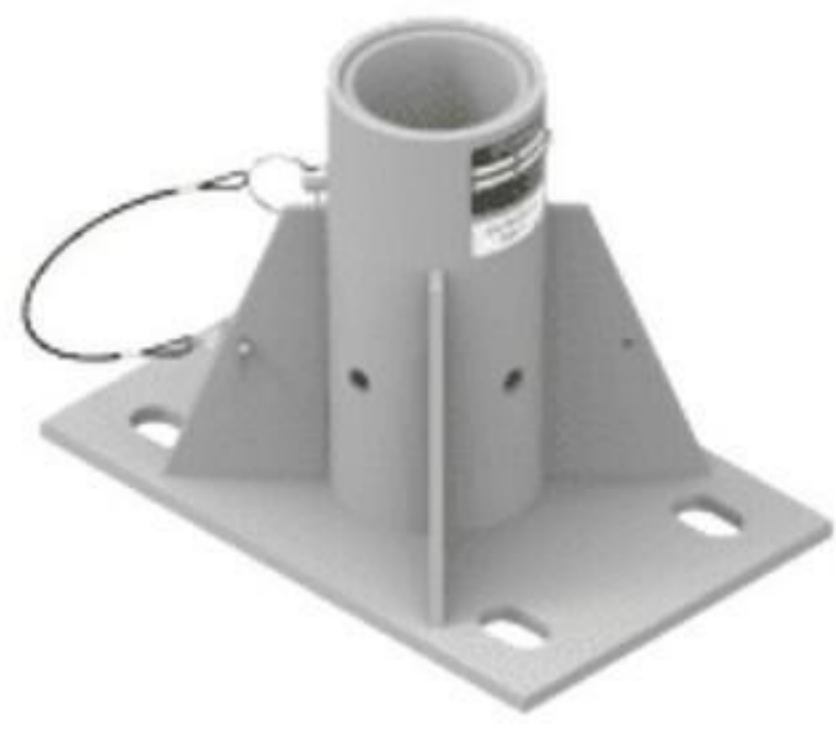


The assembly of the elements in a T configuration with fixing to the ground allows, using the GNSSC-FIXM16 accessory, to fasten the system to the ground via an M16 fixing, the rear extension fixed to the structure by means of an M16 fixing. To mount in this configuration you need an adjustable ground fixing model GNSSC-FIXM16

### Config 3 Configuration with tow hook fixing



Mounting the elements in a T configuration with tow hook fixing allows, using the GNSSC-FIXVAN accessory, to attach the system to the tow hook of a suitable vehicle



IN 2105  
76mm Centre Floor Base



IN 2005  
76mm Floor Base



IN 2137  
76mm Centre Floor Base



IN 2107  
76mm Wall Base



IN 2315  
51 - 127mm Barrel Base  
(Zinc Plated)



IN 2021  
0 - 76mm Barrel Base  
(304 SS)



IN 2129  
0 - 76mm Barrel Base  
(Zinc Plated)



IN 2482  
51 - 267mm Shoring Box



IN 2008  
105 - 400mm Adjustable Wall Base



IN 2168  
152 - 1143mm Adjustable  
Wall Base



IN 2075  
305 - 800mm Adjustable  
Wall Base



IN 2125  
610 - 1143mm Shoring  
Adjustable Wall Base





Counterweight System 610mm



A counterweight system is ideal when you need to move and access various confined spaces entry points in the same area

Consisting of a central base unit with a number of options for anchoring, positioning, leg adjustment and extension, this is a system designed for versatility

Counterweight System 1200mm





A free-standing system is ideal when you need to move the davit and access different confined space entry points in the same area

The portable wheeled lower base allows for adjustment to accommodate the width and length of most standard confined spaces, offering a versatile confined space access solution.

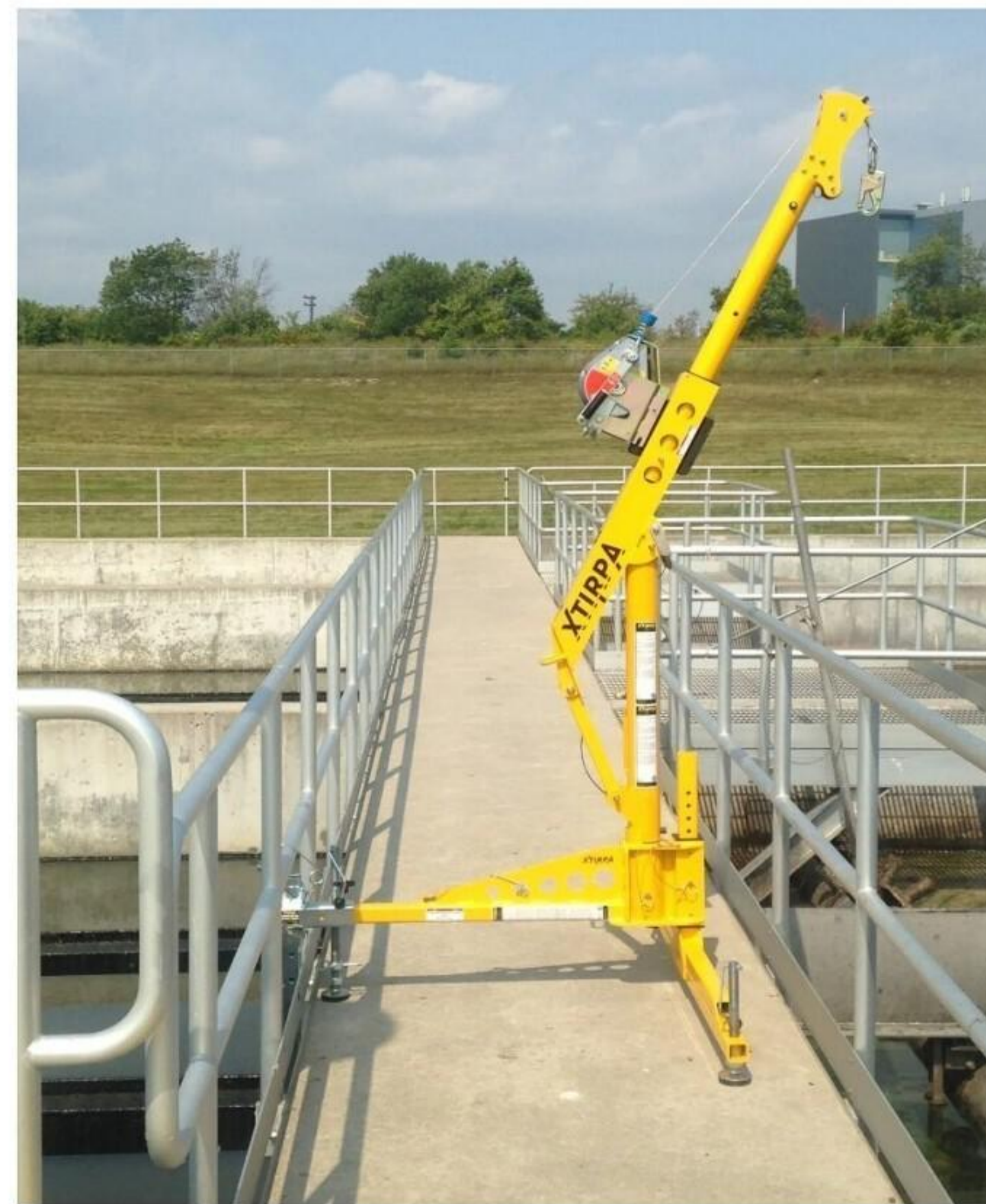
The extendable legs allow for access to wider entries and increase stability.

## Hitch Mount System



Hitch mount davit system provides a portable confined space access system with a hitch mount attachment for vehicles, plus other anchor points

## Hitch Mount C Clamp 610mm

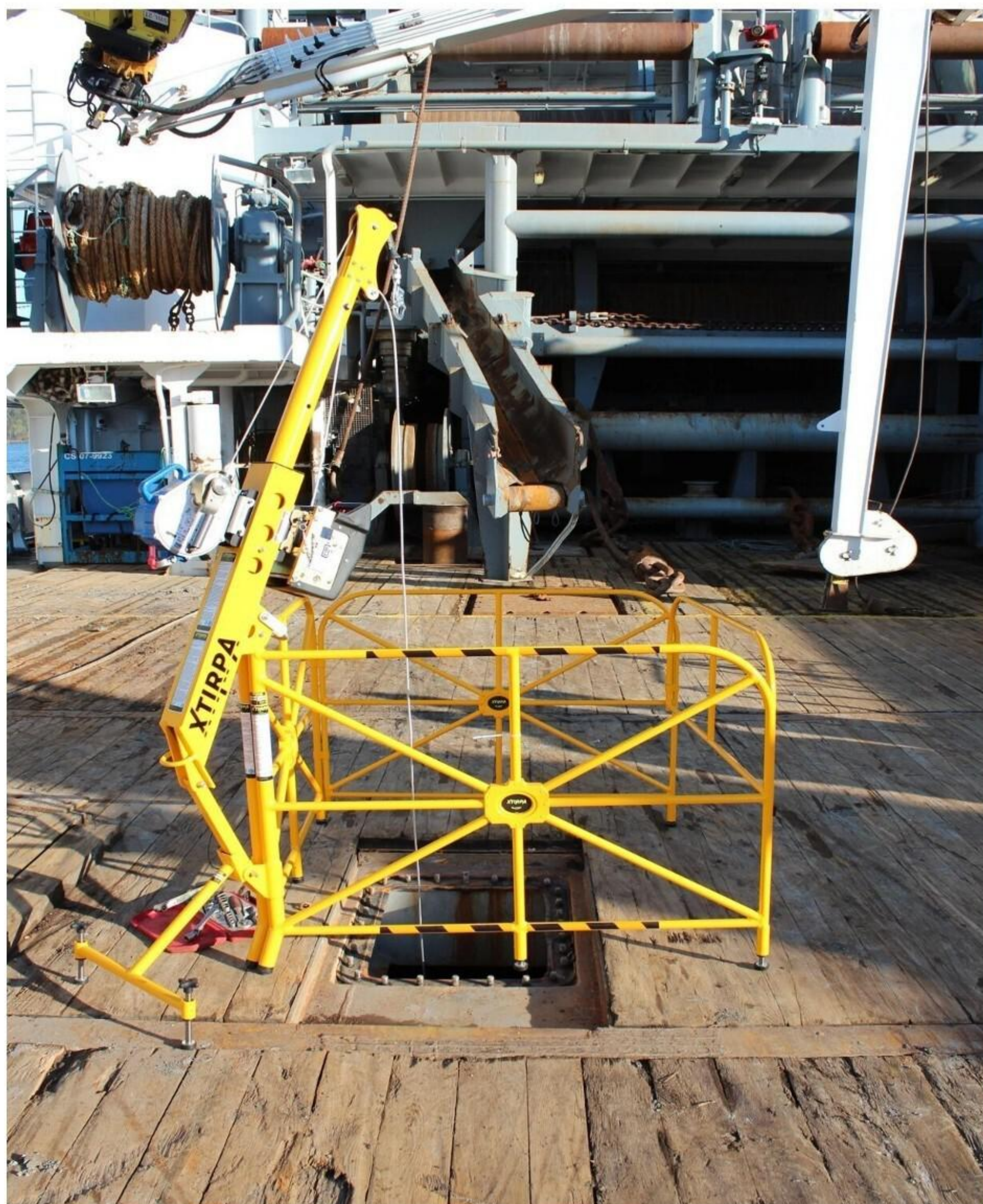


Ideal for use in a sandwich plate anchor and using a "C" clamp ideal for concrete or steel mezzanine floor anchors.

## Hitch Mount J Clamp 610mm



Hitch Mount "J" clamp is a hitch mount system commonly used for rescue in confined spaces



**Guard rail systems are used when an exposed entry point needs to be guarded**

This portable system has an integrated mast which is used in conjunction with a davit arm to provide fall protection, entry and retrieval capabilities. The manhole guard system facilitates access to underground chambers or any other type of confined space where an entry point should be protected. Davit arm is equipped with ( 2268 kg ) anchor point



## Manhole Collar System

This system also offers a good solution in situations where there is little space around the manhole. Since the system is mounted on the manhole, very little space is required around the manhole. In addition to the standard system, a Davit arm with a limited height is also available for situations with limited space above the manhole



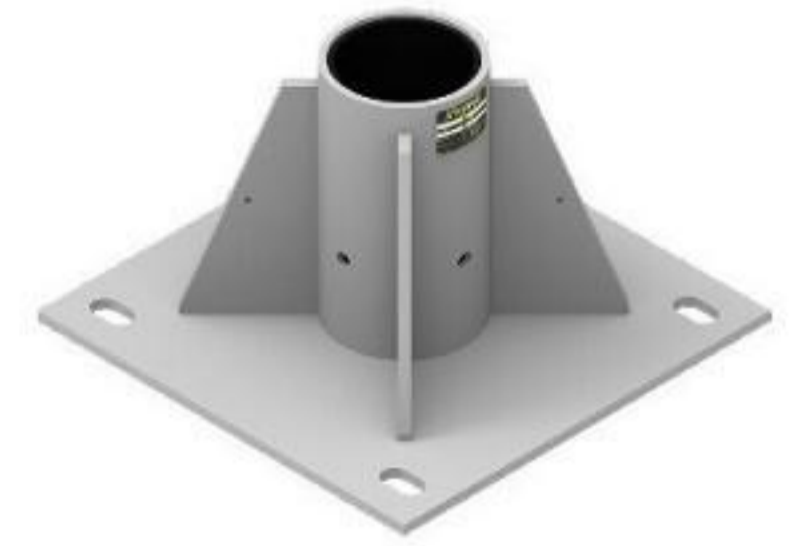
**Davit Arm 1200mm**



**Adapters for 1200mm Davit Arm**



IN 2380 254 - 432mm Adjustable Wall Adapter



IN 2254 102mm Central Mount Floor Adapter



IN 2253 102mm Wall Base

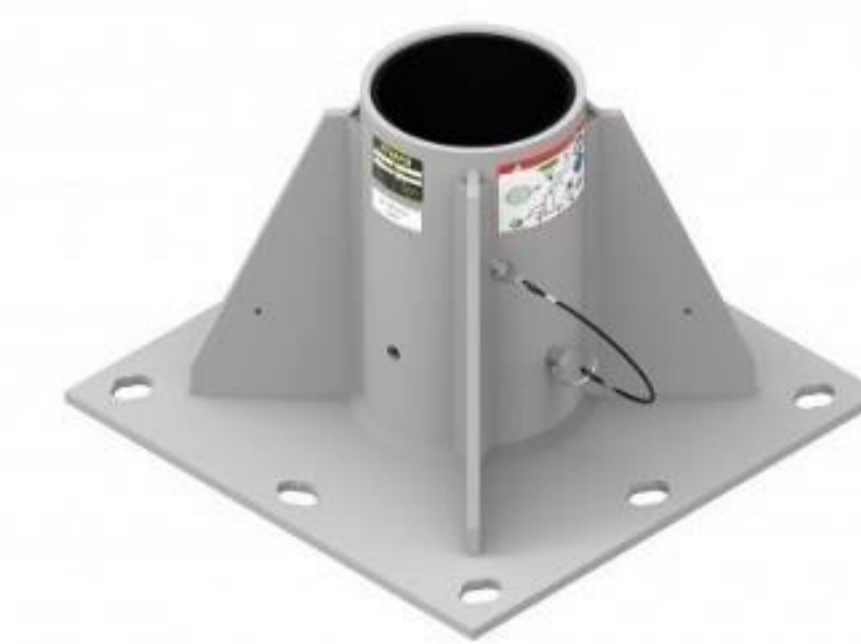
Davit Arm 1200mm is ideal for work areas that require regular set-up and tear-down and where a base can be permanently affixed to an existing structure



**Davit Arm 2400mm**



**Adapter for 2400mm Davit Arm**



IN 2201 104mm Centre Floor Base

Davit Arm 2400mm is ensuring easy and safe access into a wide variety of confined spaces. This davits versatility offers a solution where other conventional systems are impractical



Pole Hoist System is a vertical confined space entry and retrieval fall arrest system. A versatile pole hoist for confined space access

#### Tank & Flange Clamp



If entry is restricted use the Tank Clamp & the Flange Clamp for side entry access into the confined space

# Rescue Equipment



**Confined space equipment is any tool or system that protects, aids or rescues someone who is working inside of a confined space**

**This can include simple tools like signs, radios, and helmets as well as more complex equipment like gas monitors, manhole pumps, and retrieval gear**





Product Specifications	
Name	Lift Res Q
Code	FA 7020120
Size	20 - 40m



Product Specifications	
Name	Protekt Rescue Device
Code	AR 010
Size	11m Rescue Rope



Product Specifications	
Name	Flexible Sked Rescue Stretcher
Code	DX 020
Size	2435 x 920mm



Product Specifications	
Name	Basket Rescue Stretcher
Code	DX 030
Size	2125 x 585mm



Product Specifications	
Name	Folding Rescue Stretcher
Code	DX 4010
Size	1925 x 393mm



Product Specifications	
Name	EVA - LAD Rescue
Code	FA 7002906
Size	6m

# Respiratory



Hazardous conditions can include oxygen deficiency and atmospheric concentrations which make a confined space an immediately dangerous to life and health. This makes proper respiratory protection critical to helping keep workers protected in these environments



Full Face Respirator	Nominal Protection Factor
P1 Particulate Filters	5
P2 Particulate Filters	15
P3 Particulate Filters	1000
Class 1 Gas & Vapour Filters	2000 or 1000ppm (Whichever is lower)
Class 2 Gas & Vapour Filters	2000 or 5000ppm (Whichever is lower)
Code	3M 6000 Series

Reusable, low maintenance respirator well-balanced with soft silicone nose cup ensures comfort during long periods of work  
Flexible System (gas and vapour and/or particulate filters plus certain powered and supplied air options) Twin filter design  
3 sizes (small - 6700, medium – 6800, large - 6900)


### Gas and Vapour/Combination Filters

Filter		Class	Hazard
6059		ABEK1	Organic vapours (boiling point above 65°C), inorganic vapours, acid gases, ammonia and its derivatives

+

5953		P1 R P2 R P3 R	Solid and liquid particles
------	---	----------------------	----------------------------

### Particulate Filter

2138		P2 R P3 R	Solid and liquid particles, plus relief from Ozone up to 10 x OEL) Dust Filter
------	---	--------------	--



Product Specifications	
Compatible w/ supplied air	Yes
Compatible w/ PAPR	Yes
Bayonet Attachment	Yes
Compatible with Most Welding Shields	Yes
Assigned Protection Factor	10
Code	3M 6100 Series

Reusable, low maintenance respirator well-balanced with soft silicone nose cup ensures comfort during long periods of work Flexible System (gas and vapour and/or particulate filters plus certain powered and supplied air options) Twin filter design  
3 sizes (small - 6100, medium – 6200, large - 6300)

### Gas and Vapour/Combination Filters

Filter		Class	Hazard
6059		ABEK1	Organic vapours (boiling point above 65°C), inorganic vapours, acid gases, ammonia and its derivatives

+

5953		P1 R P2 R P3 R	Fine Dusts + Mists (Cover)
------	---	----------------------	----------------------------

### Particulate Filter

2138		P2 R P3 R	Solid and liquid particles, plus relief from Ozone up to 10 x OEL) Dust Filter
------	---	--------------	--



PROTECTING PROFESSIONALS

# TH3 PAP Swiss Air Powered Respirator



Ventilated half mask made of fire-resistant material covers mouth and nose area completely. Positive pressure supports breathing and avoids fatigue

Shoulder harness for ergonomically perfect weight distribution of the super-light filter system (only 550g)

The Control Panel operates all functions centrally from the front:

- Easy indication of filter and battery status
- Stepless regulation of the air flow for maximum working comfort
- Automatic altitude and temperature compensation



**TH3**  
certified

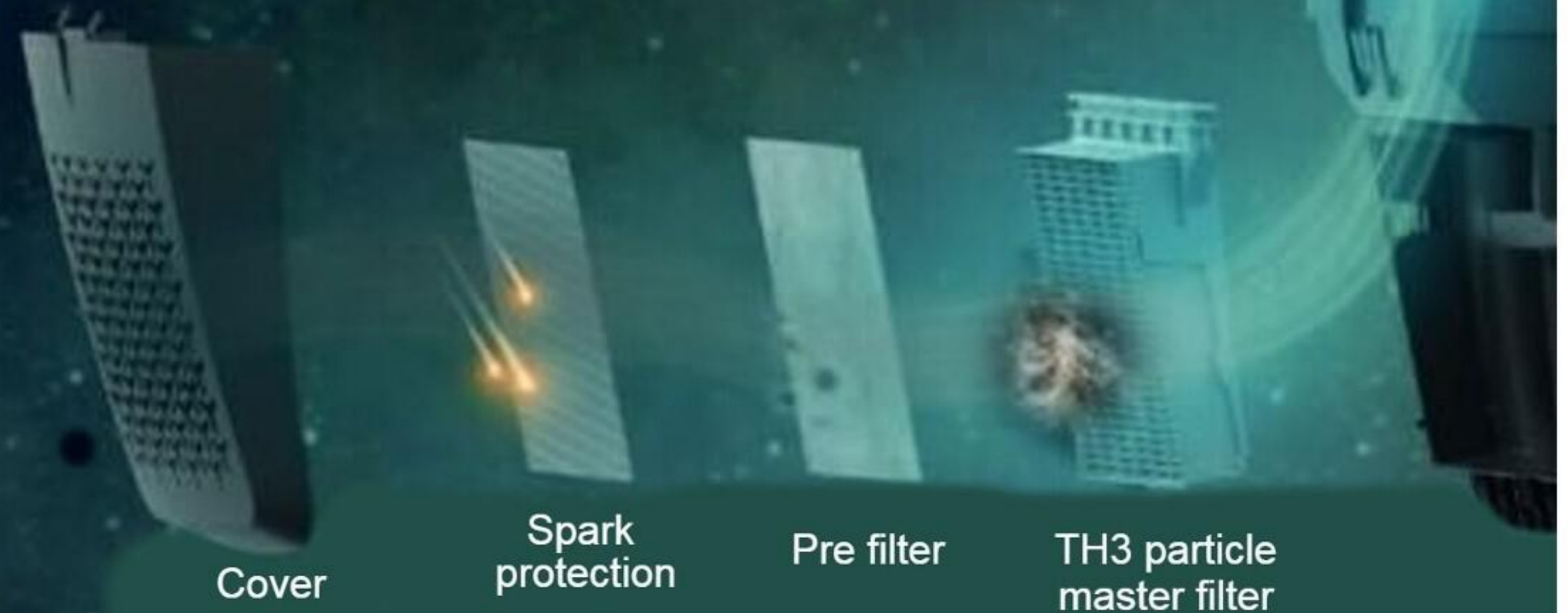
# 99.8%

Swiss air meets the highest requirements for professional respiratory protection systems, the TH3 standard: 99.8% of all harmful particles, aerosols, vapours, smoke or viruses are reliably filtered out of the breathing air

Infinitely adjustable headband for all sizes from XS to XL

Y-hose adjustable neck strap and flexible hose elements guides the air directly into the half mask

Powerful TH3 filter unit with innovative, ultra-flat design. Lightweight and comfortable to carry, highly effective in use Blower unit with automatic air flow calibration and 14h high performance battery for an uninterrupted working day



## Asbestos / Dust Removal Containment



Welfare Decontamination Unit



Concertina Shower System



Dual Fuel Twin Shower Decontamination Unit



Concertina Asbestos Airlock System

Decontamination is a combination of processes that removes or destroys contamination so that infectious agents or other contaminants cannot reach a susceptible site in sufficient quantities to initiate infection, or other harmful response

### Thurmac H Type Vacuums

Mac Vac Lite H Type  
Battery & Corded



H Type Wet Vac



H Type Vac 17.5L & 28.5L



Thurmac H Type Vacuums are efficient, reliable, fully-compliant solution for use in the asbestos removal and construction sectors. They remove potentially contaminated water and debris from asbestos enclosures or flooded sites

Find more visit the website under "Asbestos / Dust"

Blasting is generally a dry process. However, depending on the method, it is classified into several types such as sandblasting, blower blasting, and shot blasting. It is also used for various purposes such as rust removal, cleaning, and polishing

More info on Website under "Blast Units / Systems"



**Precision Dustless Blasting System**

- A highly efficient coating removal system - capable of removing up to 15m<sup>2</sup> per hour
- Cost effective - dustless blasting is a more efficient method of removal as opposed to traditional manual methods
- All equipment is easy to use and portable, meaning this equipment can be utilised in various site locations



**Trailer Mounted Blast Unit**

- All in one self-contained unit, complete with blast pot, water tank and compressor
- Ideal for smaller projects where there may be space constraints on sites
- Can be used on remote sites / short duration projects, i.e line paint removal, graffiti, non-hazardous coating removal, restoration etc



**Blast & Breathe Trailer**

- An integrated water tank ensures that up to 160 litres of water is available to support the blasting process – ideal for use in remote locations.
- An external fuel filler cap makes refuelling simple and easy
- The equipment is supplied with working instructions and easy to follow user guidance

# Safety Accessories



Confined space equipment is any tool or system that protects, aids or rescues someone who is working inside of a confined space. This can include simple tools like tags, radios, and helmets as well as more complex equipment like gas monitors, manhole pumps, and retrieval gear





Product Specifications	
Name	Fox Safety Helmet + Visor
Code	HP 1020000B
Colours	Black, Orange & White



Product Specifications	
Name	Evo 3 Lines Man Helmet
Code	AJG240-00_-_00
Shell	Tough HDPE Shell



Product Specifications	
Name	Skylotec GRX
Code	GRX
Size	54 - 63cm



Product Specifications	
Name	Rothoblaas Protector Helmet
Can be used for working at height	
Light & Resistant	
Weighing only 385g	



Product Specifications	
Name	Fire Extinguishers
Tested and Certified to CE and EN3	
Foam Fire Extinguishers Available	
Powder / Water Fire Extinguishers Available	



Product Specifications	
Name	HAS First Aid Kit
HSA Kit 1 1-10, 2 11-25, 3 25-50	
Includes Burn Gel and Eye Wash	



Product Specifications	
Name	Manhole Safety Cross
Small Size	18", 21" and 24" Manhole Openings
Large Size	26", 30" and 36" Manhole Openings



Product Specifications	
Name	Crewsaver Sport Life Jacket
Code	165N
Cover	Robust Outer Cover



Product Specifications	
Name	Protekt Safety Barrier
Code	AT 210
Height	1.02m
Size	0.66m



Product Specifications	
Name	Manhole Guard
Code	ZS 010
Min / Max Diameter	Max 700mm & Min 497mm
Height	258mm



Product Specifications	
Name	Ladder Tag Kit
Inserts	10
Ladder Tag Holders	10
Cable Ties	20
Mark Pen	1



Product Specifications	
Name	Equipment Tag Kit
Holder	20
Inserts	20
Cable Ties	40
Mark Pen	2



Product Specifications	
Name	Scaffold Tag Set
Holder	1
Inserts	3



Product Specifications	
Name	Micro Tag Inserts
Inserts	50

## Tool Lanyards



Product Specifications	
Code	TS 9000108
Name	Retractable Tool Lanyard
Max Length	1.20m
Karabiner Opening	7mm



Product Specifications	
Code	TS 9000114
Name	Harness Tool Holding Karabiner
Max Weight	20kg
Karabiner Opening	24mm



Product Specifications	
Code	TS 9000103
Name	Wristband Lanyard
Max Weight	24kg
Length of Cord	120mm



Product Specifications	
Code	TS 9000106
Name	Stretch Lanyard
Max Weight	5kg
Karabiner Opening	14mm



Product Specifications	
Code	TS 9000104
Name	Attachment D Ring
Diameter of D Ring	22mm
Webbing Width	25mm

# Skyhook



**The Skyhook is a mobile fall arrest system that provides overhead anchor points anywhere, any time**

**The Skyhook offers three overhead anchor points and adding an extendable mast that provides one worker overhead tie-off up to 10.4m in height. Both support a maximum anchor capacity of 140kg**

### Skyhook x1000



Max. Working Height	6.7m
Min. Working Height	5.2m
Max. Folded Height	2.4m
Frame Width	1.8m
Overall Length	2.9m
Total Weight	998kg
Max Anchor Point	141kg
Max Allowable Users	2

### Skyhook x1250



Max. Working Height	10m
Min. Working Height	0.6m
Max. Folded Height	2.6m
Frame Width	1.7m
Max. Arm Reach Out	3m
Overall Length	4.7m
Max. Anchor Point	141kg
Max. Allowable Users	3
Weight	2676kg

# Safety Tripods



One of the main purposes of tripods is to simplify access and escape for workers that are set to operate within hazardous areas



Product Specifications	
Code	FA 6000100
Name	Kratos Tripod Maxi
Min / Max Height	115 - 215cm
Usage at One Time	1 Person



Product Specifications	
Code	DBA2
Name	IKAR Aluminium Tripod
Min / Max Height	144 - 242cm
Usage at One Time	2 Person



Product Specifications	
Code	GSE230
Name	Globestock 230 Tripod
Min / Max Height	140 - 240cm
Usage at One Time	2 Person



Product Specifications	
Code	TM9
Name	Protekt TM9 Tripod
Min / Max Height	147 - 229cm
Usage at One Time	1 Person



Product Specifications	
Code	TM15
Name	Protekt Safety Tripod
Max Height	313cm
Usage at One Time	3 Person



Product Specifications	
Code	TM12-2
Name	Protekt Hexapod
Min / Max Height	139 - 221cm
Usage at One Time	2 Person



Product Specifications	
Code	TM12
Name	Protekt Spider Tripod
Min / Max Height	189 - 221cm
Usage at One Time	2 Person



Product Specifications	
Code	N/A
Name	MSA Workman Tripod
Height	245cm
Usage at One Time	1 Person



Product Specifications	
Name	Bosuns Chair



Product Specifications	
Code	N/A
Name	Honor Tripod
Min / Max Height	1700 - 2800cm
Usage at One Time	2 Person



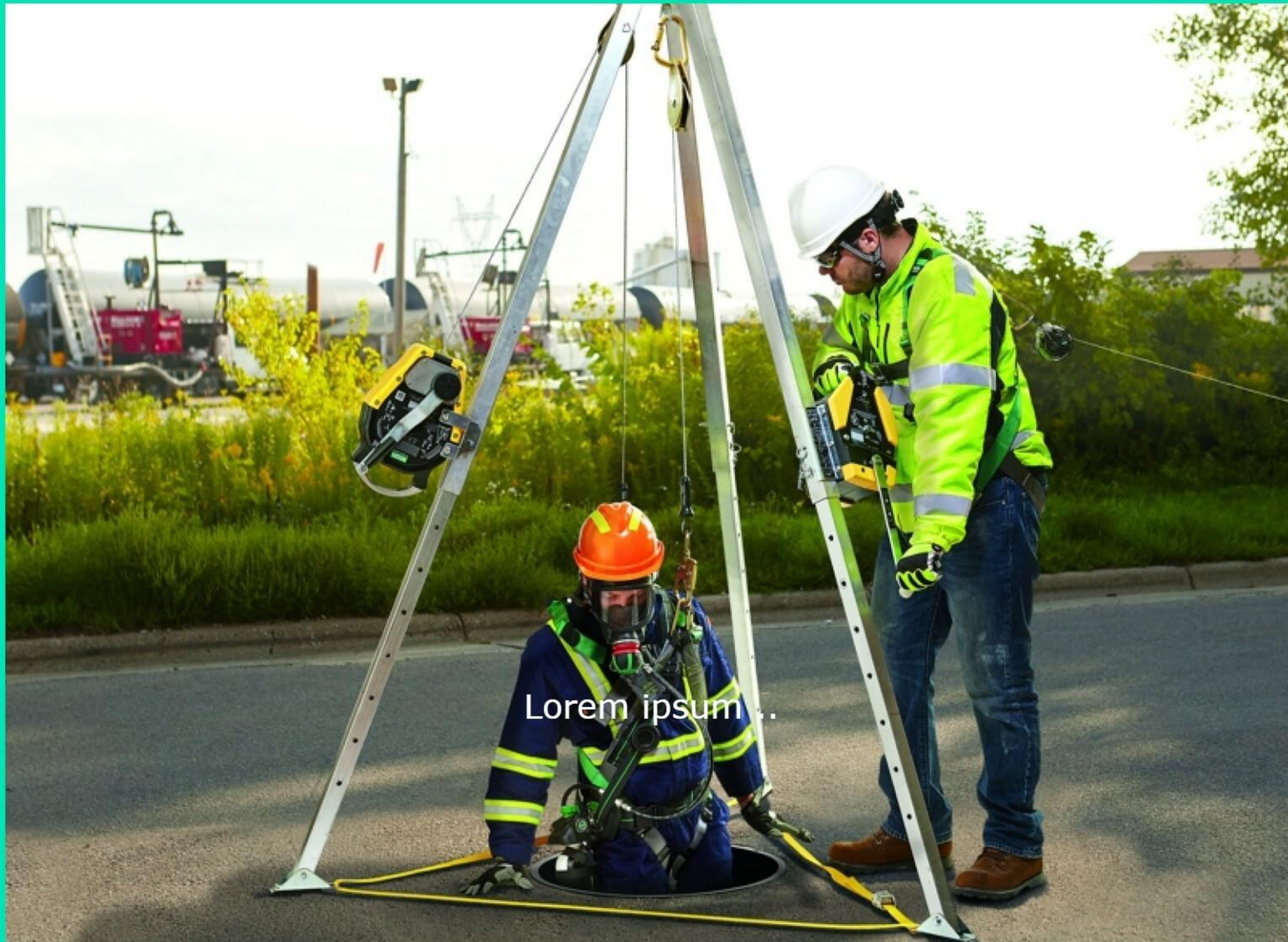
Product Specifications	
Code	TM7-T
Name	Protekt Goods Lifting Tripod
Min / Max Height	147 - 229cm
Max Lifting Weight	1,000kg



Product Specifications	
Name	Tripod Bag (TM9)



# Winches



Winches all for safe, easy entry and escape, and they can be used to prevent falling from height. Winches are manually operated and come in various of lengths



Product Specifications	
Name	Kratos Rescue Winch
Code	FA 6000320
Cable Length	20m



Product Specifications	
Name	Belem Rescue & Work Winch
Code	FA 6002320
Cable Length	20m



Product Specifications	
Name	Honor Personnel Winch
Code	MRW
Cable Length	15m



Product Specifications	
Name	Protekt Rescue Lifting Device
Code	RUP 502
Cable Length	20m



Product Specifications	
Name	IKAR Personnel Winch
Code	PLW
Cable Length	30m

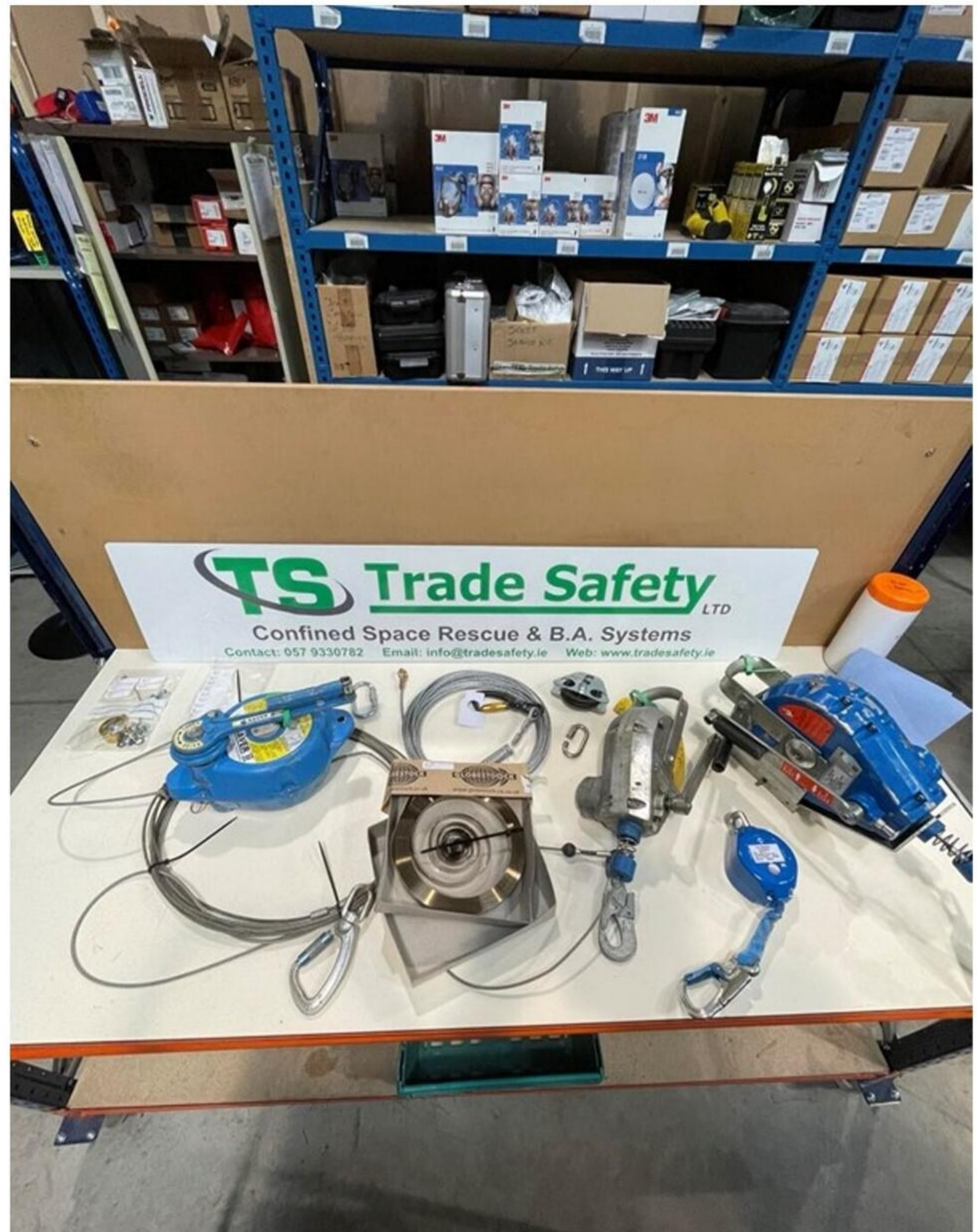


Product Specifications	
Name	Globestock G-Winch
Code	G-Winch
Cable Length	20m

# Servicing



We have specialised workshops with qualified technicians to cater for gas detection, breathing apparatus, tripods, winches, and fall arrest blocks



We have specialised workshops with qualified technicians to cater for gas detection, breathing apparatus, tripods, winches and fall arrest blocks. We also offer on site servicing for all the equipment mentioned above.

We are now a service centre for a range of Kratos products including fall arrest blocks and rescue devices.

We now are able to offer a comprehensive sales and service / repair package for Kratos customers in Ireland.

# Training



Training can be at our Training Centre, where we have all the facilities and equipment required, including a purpose built Confined Space Unit, or at your premises which we have a portable Confined Space Unit which can be brought to your premises

Trade Safety is a certified City & Guilds confined space training centre



**Confined Space Training**  
Medium & High Risk



**Manual Handling Training**



**First Aid Training**



**Abrasive Wheels Training**



**Working at Height Training**



**MEWP Training**



**Fire Warden Training**



**Fire Extinguisher Training**



**Forklift Training / Refresher**



**EHS (Environmental Training)**



**Asbestos Awareness Training**

# Consultancy



Acting as Health and Safety Co-Ordinator Design & Construction

Preparation of Safety Statements

Preparation of Method Statements

Preparation of Preliminary Health & Safety Plan

Preparation of Health & Safety Plan for Construction Stage

Development of a Safety Management Systems

Provision of Site Safety Officers

Provision of Confined Space Rescue Team

Carry out Noise Assessments

Carry out Risk Assessments/Safety Audits

Carry out Ergonomics & VDU & DSE Assessments

Carry out Noise Monitoring

Carry out Dust Monitoring





Face Fit testing is a method of ensuring that a facepiece or mask is tight-fitting and seals adequately to the wearer's face. The performance of tight-fitting facepieces depends on achieving continuous contact between the wearer's skin and the seal of the mask

### **Before The Face Fit Testing Commences**

1. Are clean-shaven for the Face Fit test - this includes any hair growth between the skin and the mask seal
2. Don't smoke or vape, eat, chew gum or drink anything (other than water) for the 30 minutes prior to the test
3. Bring the facepiece, including any filters if used. Trade Safety can supply a mask if not

### **The Face Fit Test**

The test will consist of 7 different exercises, that are simple but will test the mask to make sure there are no leaks present. The test will take 20 minutes in total



Noise Monitoring is needed to control the noise level coming from factories, roads and construction sites, which is one of the largest causes of complaints to regulators

Measuring noise is not straightforward. A sophisticated noise meter is required along with a high level of competency. The noise measurement is taken over a period of 30 minutes. The measured noise level may need to be corrected for traffic noise monitoring

Trade Safety use the Cirrus CR 162C to conduct all Noise Monitoring Tests

**Key Features Include:**

1. Simple operation with an ergonomic design
2. Simultaneous measurement of all workplace noise parameters with additional two “virtual” noise meters
3. NR & NC values & curves on screen
4. Latest digital technology with a high resolution colour OLED display and back-lit keypad
5. Long battery life



The TSI Flowmaster provides the most reliable and accurate flow and pressure measurements. Invaluable for hydrant testing, pump testing, flushing and water main condition testing. Simply attach, switch on and take flow and pressure readings. Saves time and money

Measures flow rates up to 3,000lpm and pressures up to 25 bar. The electromagnetic sensor has no moving parts – measurement is not affected by debris in the water stream. Weighing only 12kg, the TSI Flowmaster has a convenient carry handle contributing to its overall ease use

### Flowmeter Specifications

Type: Electromagnetic

Operating Range: 30 to 3,000 lpm Can be extended to 5,000 lpm

Accuracy: >750lpm: ±15lpm. < 750lpm: ± 2%



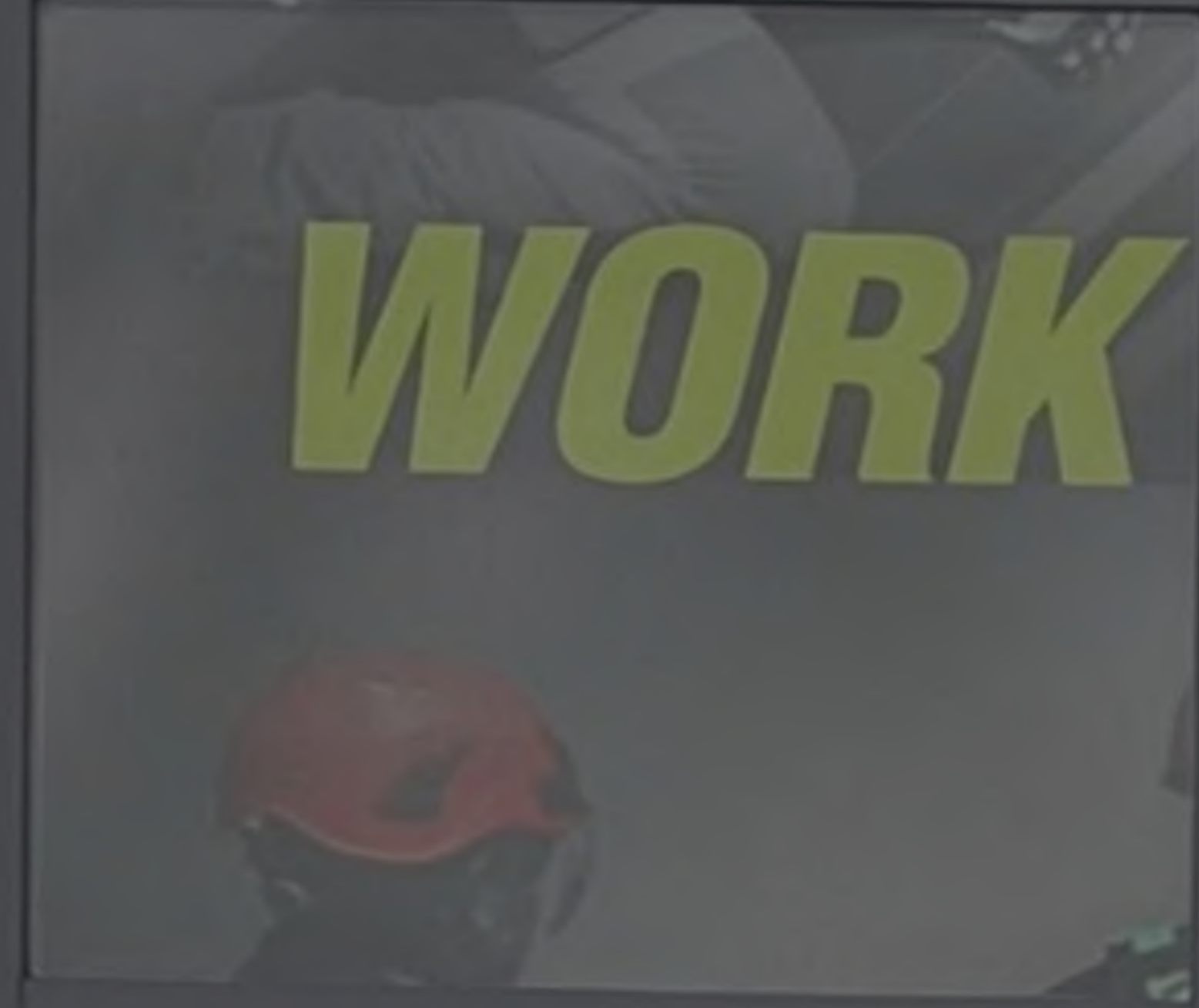
**FALL**

**ARREST**

**WORK**

**AT**

**HEIGHT**



**CONFINED**

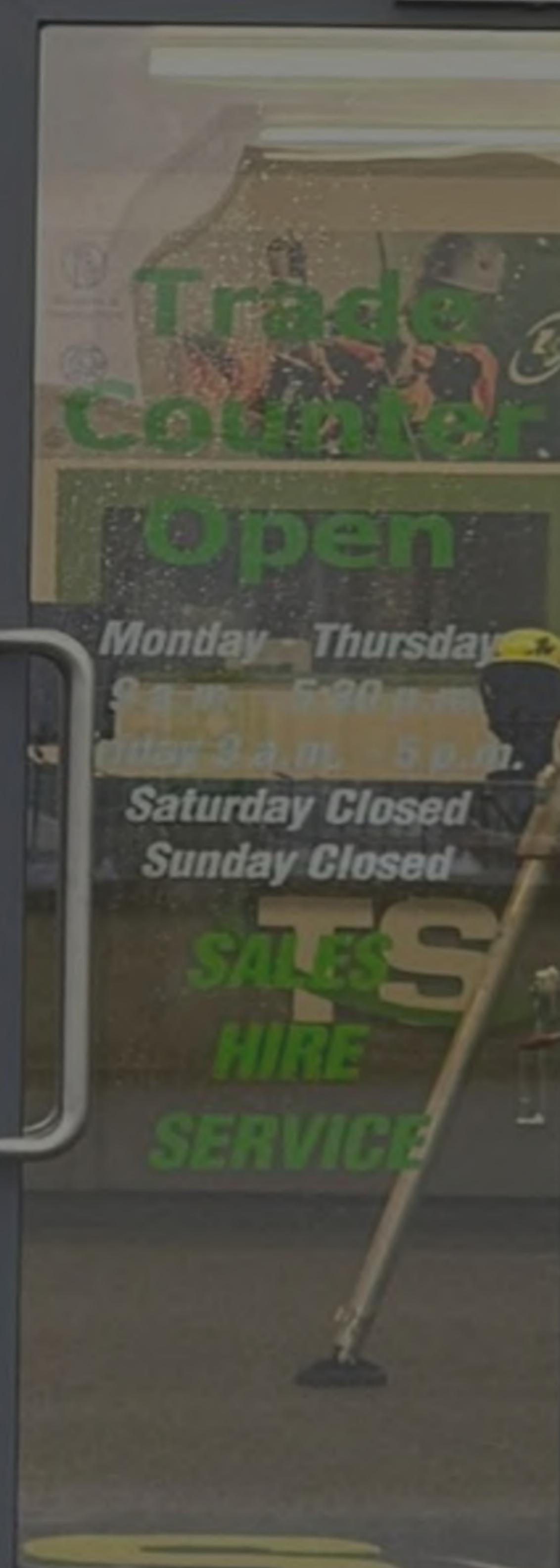
**SPACE**



**HARNESSES**



**FALL  
ARREST**



**Trade  
Counter**

**Open**

Monday - Thursday

9 a.m. - 5:30 p.m.

Friday 9 a.m. - 5 p.m.

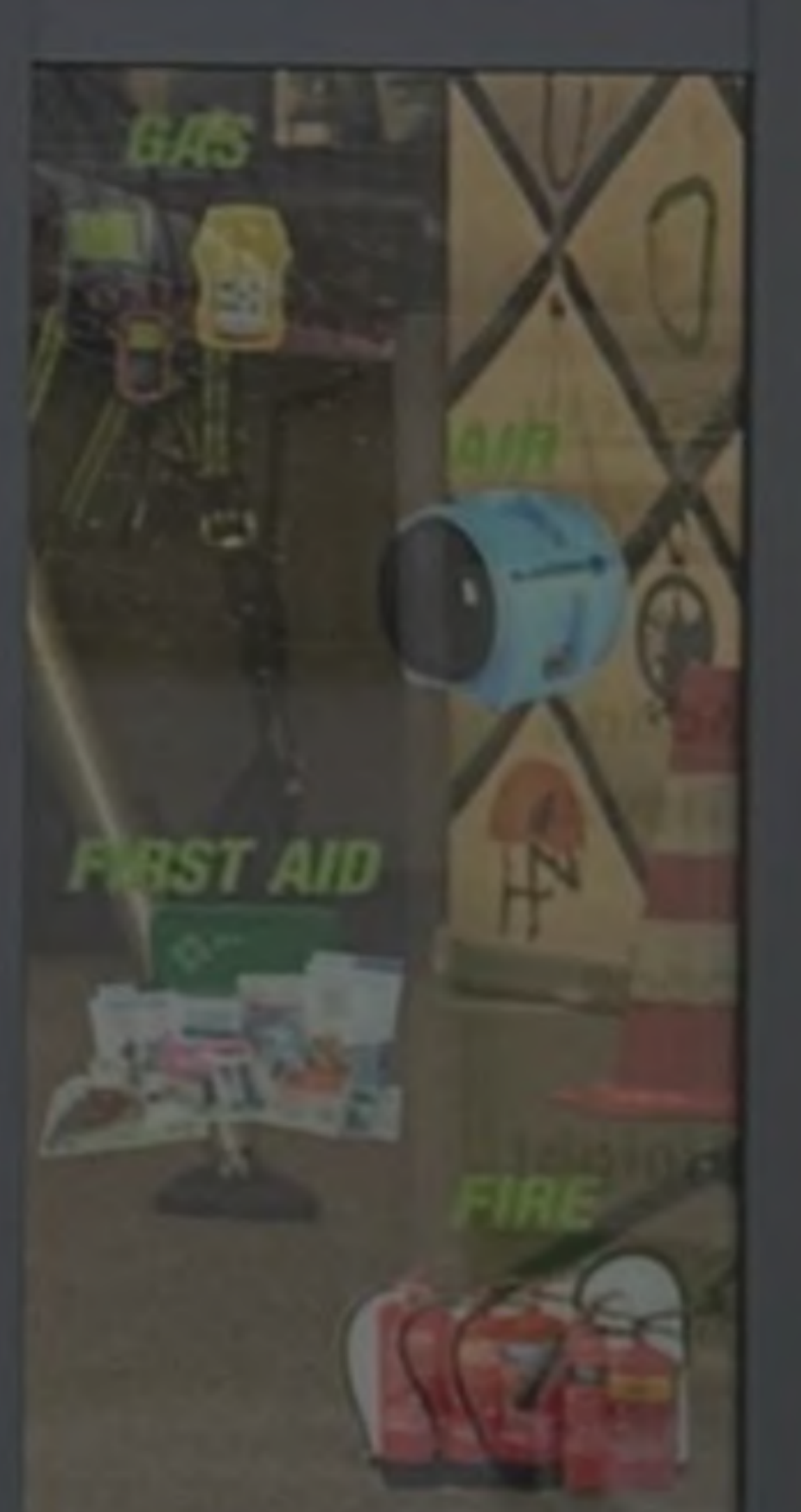
Saturday Closed

Sunday Closed

**SALES**

**HIRE**

**SERVICE**



**GAS**

**FIRST AID**

**FIRE**

Unit 4, Sragh Business  
Park, Sragh Avenue,  
Tullamore, Co. Offaly,  
R35X2N5  
057 9330782

Unit 7, The Foundry,  
Sanda Road  
Belfast,  
BT37 9UB  
0044 2895757981

[www.tradesafety.ie](http://www.tradesafety.ie)

[info@tradesafety.ie](mailto:info@tradesafety.ie)