

GET SMART

THE CONNECTED SHOP



**SMART WINDOW VACUUM ROBOT
USER MANUAL**

Welcome to the Smart Window Vacuum Robot User Manual. Your easy, step-by-step guide to set up and connect your Smart Window Vacuum Robot. The device is designed to be easy-to-use and to replace all average window cleaners with this modern smart vacuum cleaner.



SUMMARY

I. Device Set Up



1. Set-up Guide
 - a) Set-up Video

II. Initialization



2. Initial State of your device
 - a) Manage Device

III. Mobile App Connection



3. Registering on the Mobile App
 - a) Downloading the Mobile App
 - b) Adding Devices

PACKAGING DETAILS



1 Smart Vacuum Robot

2 Power Cable

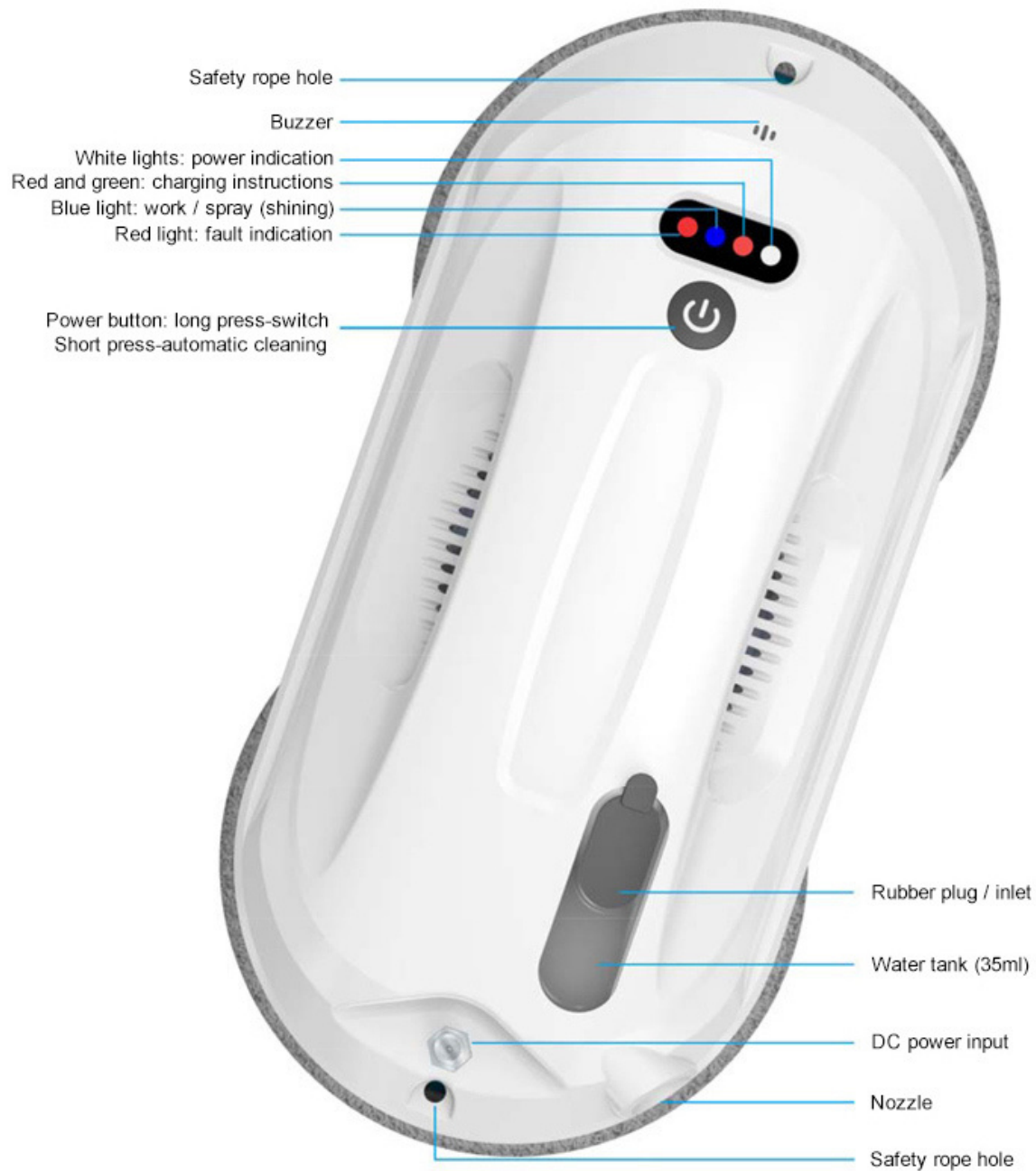
3 Power Adapter

4 Remote Control

5 Safety Rope

6 Cleaning cloth/mop

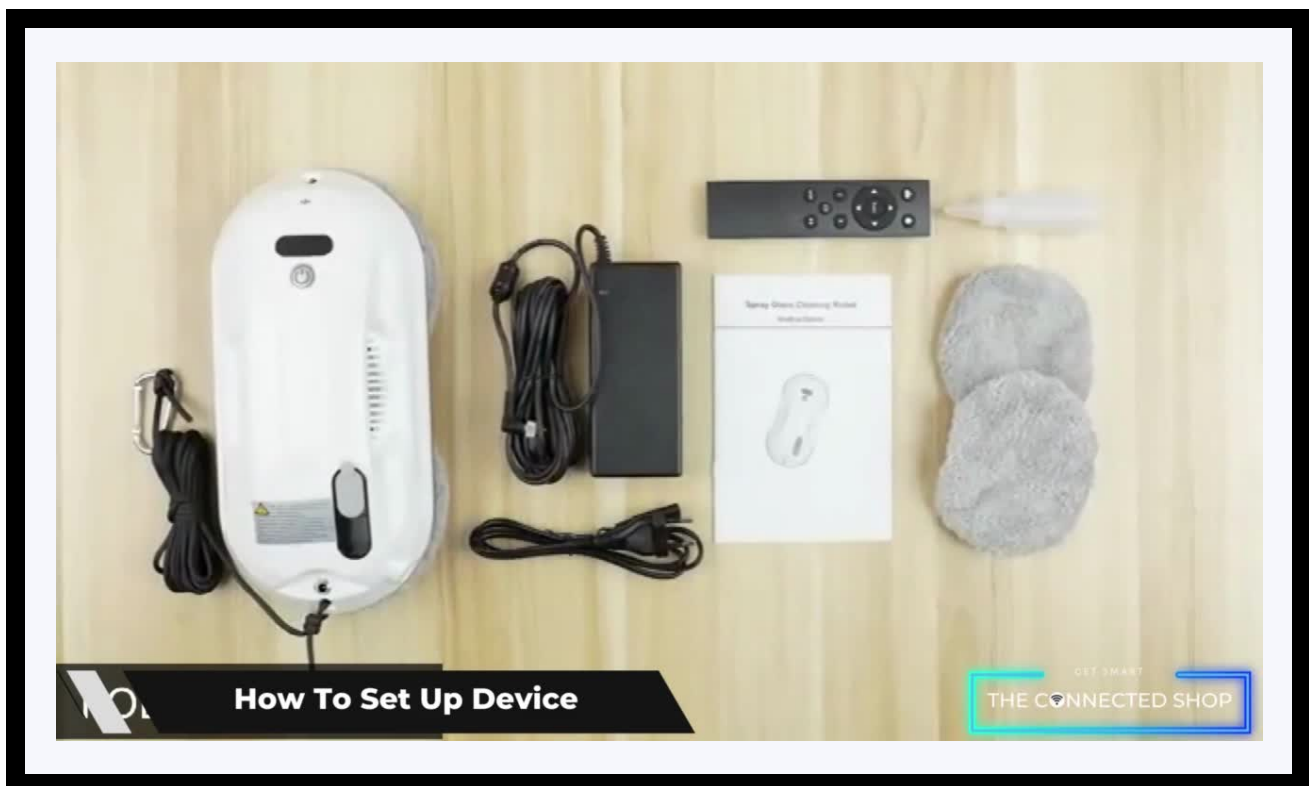
STEP-BY-STEP SET-UP GUIDE



1. SET UP



- Remove all items from its original box and insert the mops/cloths on the bottom of the device
- Pour in some water using the small bottle included and plug in the power cable
- Make sure to also keep the device plugged in while in use and tie the safety rope somewhere near to avoid the device from falling
- Afterwards, place the device on a flat surface (e.g., window, floor) and long-press the power button to turn on the device
- It will begin cleaning on its own, and you can manage the direction of where it's cleaning using the remote control or via the mobile app

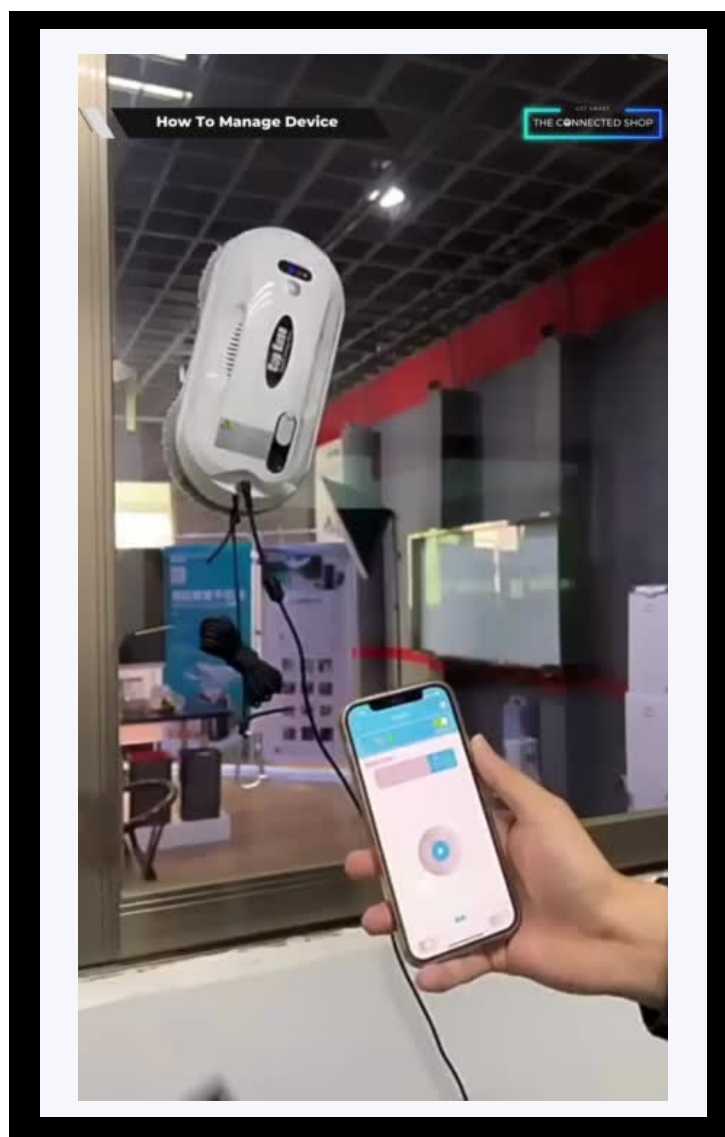


2. INITIAL STATE OF YOUR DEVICE



a) Manage Device

- To manage the device via the app, pair the device and your phone first via Bluetooth
- Long-press the power button on the device and turn on mobile Bluetooth
- Wait for the device to successfully pair
- Afterwards, you can now control the device via the mobile app



3. MOBILE APP CONNECTION



a) Downloading the App

Download the application on the Google Play Store or Apple AppStore by searching “GlassBot2” or by scanning the QR code below:



After downloading the app

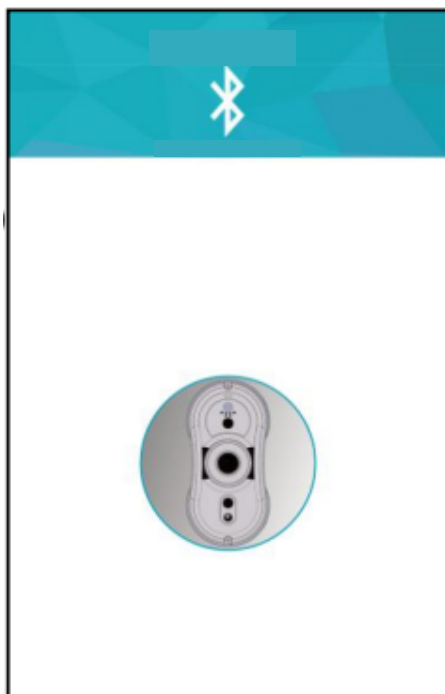
- Register or log in to an account
- Enable your Bluetooth
- Activate the device
- Keep your device near your phone

3. MOBILE APP CONNECTION



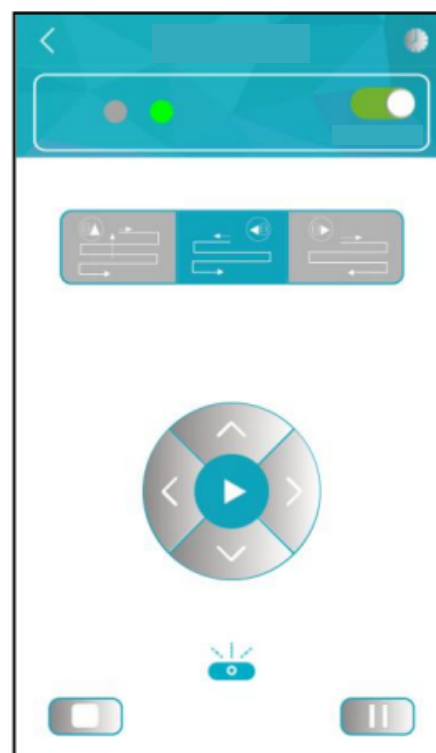
b) Adding Devices

To add devices on the app, please follow the instructions below. Your device must be turned on, as well as the phone Bluetooth in order for this to work.



- To add a device on the mobile app, click the Bluetooth symbol on the top-left corner of the app to begin pairing
- By default, the name of the device is "CleanRobot****"

- Wait for the app to finish pairing after selecting the nearby device
- After successful pairing, you can now configure the device's functions and settings



Congratulations!

You have successfully set up your very own Smart Window Vacuum Robot.

Thank you for being a valued customer of The Connected Shop.

www.theconnectedshop.com





THE CONNECTED SHOP