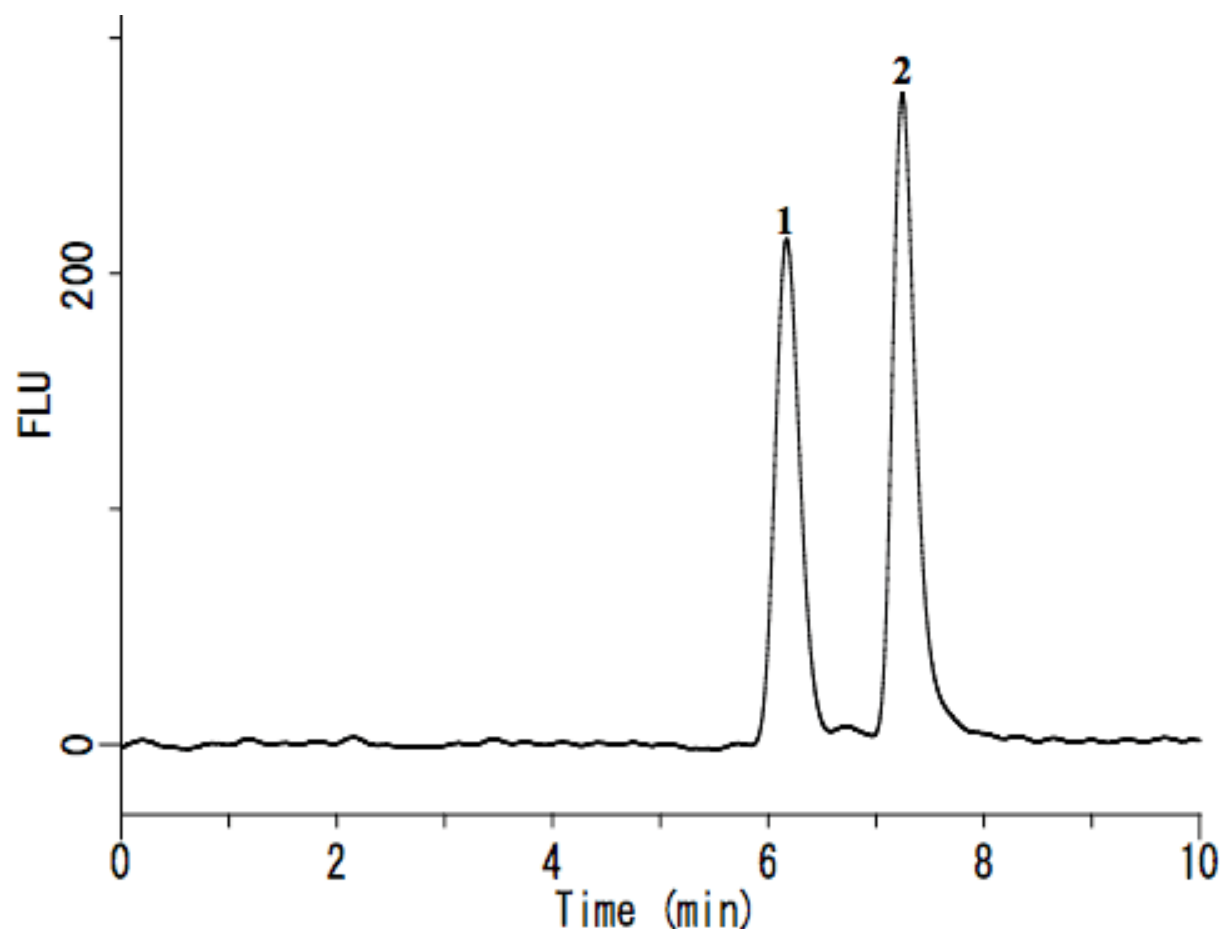


Analysis of Aldehydes

(post-column derivatization by 1,3-Cyclohexanedione)

Data No. LA581-0696



System : GL-7400 system

Column : Inertsil CX (5 μ m, 250 \times 4.6 mm I.D.)

Column Cat. No. :

Eluent : A) 0.2% H₃PO₄

B) CH₃CN

A/B = 98/2, v/v

Flow rate : 0.7 mL/min

Col. Temp. : 40 °C

Detection : FL Ex 366 nm Em 440 nm (GL-7453A FL detector)

Injection Vol. : 100 μ L

Sample : Aldehydes derivitized with 1,3-Cyclohexanedione

Solutes : 1. Formaldehyde (0.5 mg/L)

2. Acetaldehyde (0.5 mg/L)

(fluorescently-Derivatized)