

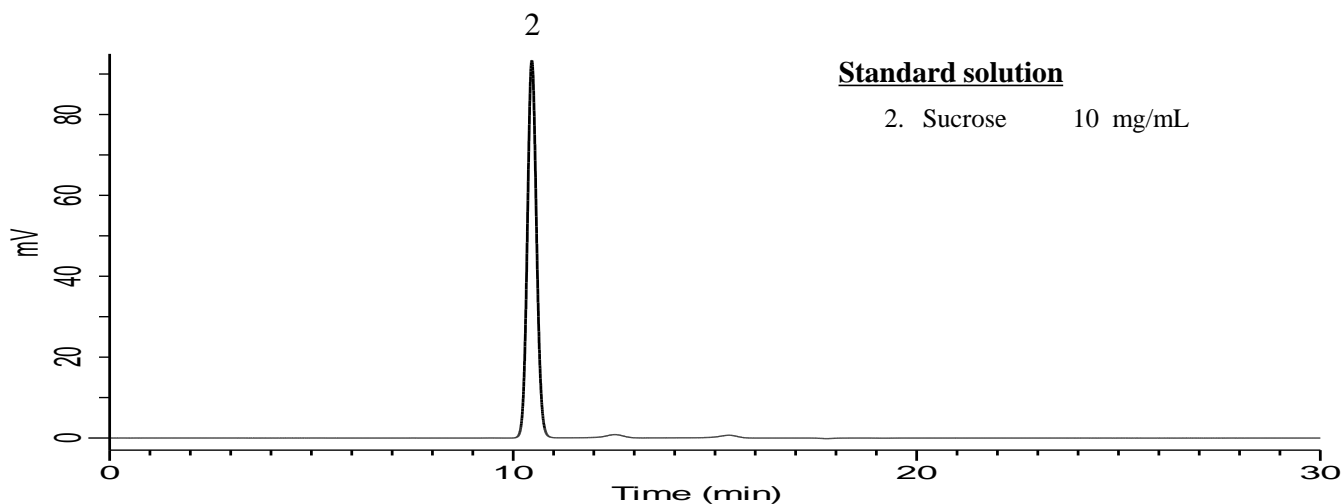
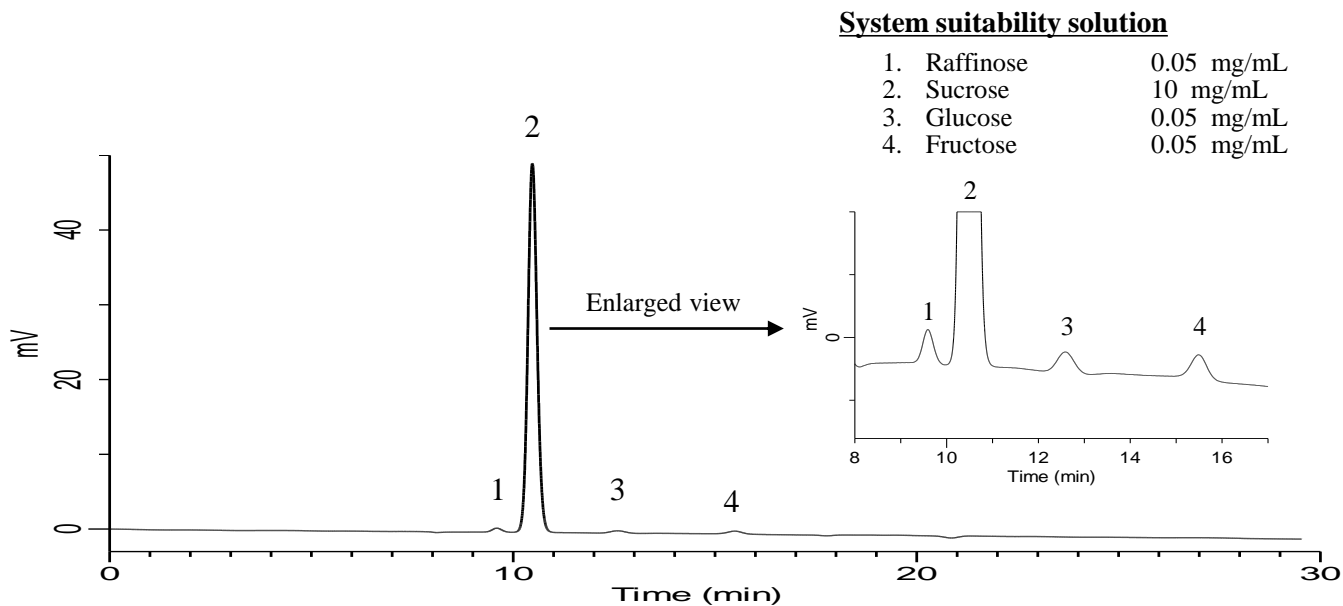
# InertSearch for LC

Inertsil Applications

## Analysis of Sucrose

(Under the condition of the PDG (Pharmacopeial Discussion Group) Stage 2 Drafts)

Data No. LB671-1030



### Conditions

**System** : Chromaster  
**Column** : InertSphere Sugar-2  
(9  $\mu$  m, 300 x 7.8 mm I.D.)  
**Column Cat. No.** : 5020-11000  
**Eluent** : H<sub>2</sub>O  
**Flow Rate** : 0.5 mL/min  
**Col. Temp.** : 80 °C  
**Detection** : RI (5450 RI Detector)  
**Injection Vol.** : 10  $\mu$  L  
**Sample** : Standard

### Analyte:

1. Raffinose: Relative retention time (1 to 2) : 0.92 (about 0.9)  
2. Sucrose  
3. Glucose : Relative retention time (3 to 2) : 1.19 (about 1.2)  
4. Fructose : Relative retention time (4 to 2) : 1.48 (about 1.6)

### System suitability solution

Peak-to-valley ratio (1, 2) : 31.07 ( $\geq$  2.5)  
Resolution (2, 3) : 3.86 ( $\geq$  1.5)

### Standard solution

RSD of the Peak area of 2 (%) (n=5) : 0.11 ( $\leq$  0.73)