



Vivo Barefoot
Furniture Pictures: Deep Hospitality | Jolly Up&Down



MILANO FAIR 23

**New collections
launched at Milano
furniture fair 2023**

The Milan Furniture Fair, also known as Salone del Mobile Milano, is one of the most highly anticipated events in the world of design and architecture. Each year, this renowned fair showcases the latest and most innovative products in the furniture industry, attracting designers, architects, and furniture enthusiasts from all over the globe.



@SAGALGROUP
LOVEWHEREYOUWORK

NEW COLLECTIONS



AVENTADOR

a stunning new addition to the executive armchair world. With meticulous attention to detail and innovative technical features, this chair is a true game-changer. The sleek and elegant design is both functional and comfortable, boasting harmonious lines that are sure to impress.



ONE HUNDRED

Transform any hospitality space or workplace into a homey oasis. Aptly named for its sizeable 100x100 footprint, this chunky sofa modular sofa with a soft profile and expansive dimensions. You can easily customize it with armrests, coffee tables, and integrated power to suit your preferences.



CRISTY

Transform any hospitality space or workplace into a homey oasis. Aptly named for its sizeable 100x100 footprint, this chunky sofa modular sofa with a soft profile and expansive dimensions. You can easily customize it with armrests, coffee tables, and integrated power to suit your preferences.



HILL

Using the rugged landscape of Italy as inspiration, these comfortable yet stylish seats echo the bold lines of the monolithic stones and outcrops found on windswept hillsides throughout the nation.



THAT'S IT

This chair's unique design and shape make it a top choice for comfortable office seating. Its plastic structure is both lightweight and durable, while the anatomically-designed seat ensures perfect ergonomics and ultimate comfort. You can choose between an upholstered version or a mesh backrest for maximum flexibility. The chair is also 99.4% recyclable, making it an eco-friendly option with easy post-use disposal.



PARTERRE

a new geometric sofa system providing the flexibility of the 6 individual elements at different heights to creates infinite variations in rhythmic and incessant repetition, evoking the variegated world of late Renaissance plant sculptures.



PROJECT INSPIRATION

**Blackbull Yard
Little Moons**

Sagal was tasked with creating a workspace for a new occupier. The key requirement was versatility, which allowed for easy reconfiguration to adapt to the potential new tenant's specific needs.



To achieve this, Sagal worked closely with the landlord to create an inviting space that any new tenant could personalize to their liking. The goal was to make the space adaptable and flexible, allowing for whomever the new occupier might be, to make it their own.

Enter Little Moons, who, with the help of Soul Spaces Design & Build team, has transformed the space into something truly unique. It's been a delight to see how Little Moons has infused their personality and brand into the workspace. The space now reflects their vision and values, which has helped to create a positive and productive environment for their team.

Overall, Sagal's focus on versatility and adaptability has allowed for a seamless transition for Little Moons, and the results speak for themselves. The space is now a perfect representation of the tenant's brand and culture, which has helped to increase employee satisfaction and productivity.





Soul Spaces | Little Moons

FIGHT OFF THE WFH BLUES

"Social Isolation was associated with about a 50% increased risk of dementia and other serious medical conditions" – Centers for Disease Control and Prevention



Soul Spaces | Little Moons
Furniture Pictured: New York | Cubo

WHILST HYBRID WORKING REFERS TO A MIX OF WFH AND WFO – WE SENSE MORE EMPLOYEES ARE GRAVITATING BACK TO THE OFFICE

Working from home and social isolation can be bad for mental health for a variety of reasons. For one, being isolated from other people can lead to feelings of loneliness and disconnection, which can negatively impact our mental health. In addition, being out of the social atmosphere of the workplace can make it more difficult for people to stay motivated and productive, which can lead to increased stress and anxiety. Furthermore, not having a clear separation between work and home life can make it more difficult for people to “turn off” and relax, and equally “turn on” and work...



Holmes Interiors | Arena Business Centre. Furniture pictured: Arwa | Olga | Booths | Tables

Overall, while there are some benefits to working from home and social isolation, it is important to find ways to maintain social connections and boundaries between work and home life. The ability to collaborate and engage with colleagues can be a key motivator for going to the office. In addition, the social atmosphere of the workplace can provide opportunities for professional development, networking, and support, which can be beneficial for career advancement and overall job satisfaction. While there may be some surveys that do not find socializing to be a top reason for going to the office, it is likely that many people do value the social aspects of work and find them to be an important part of their job.



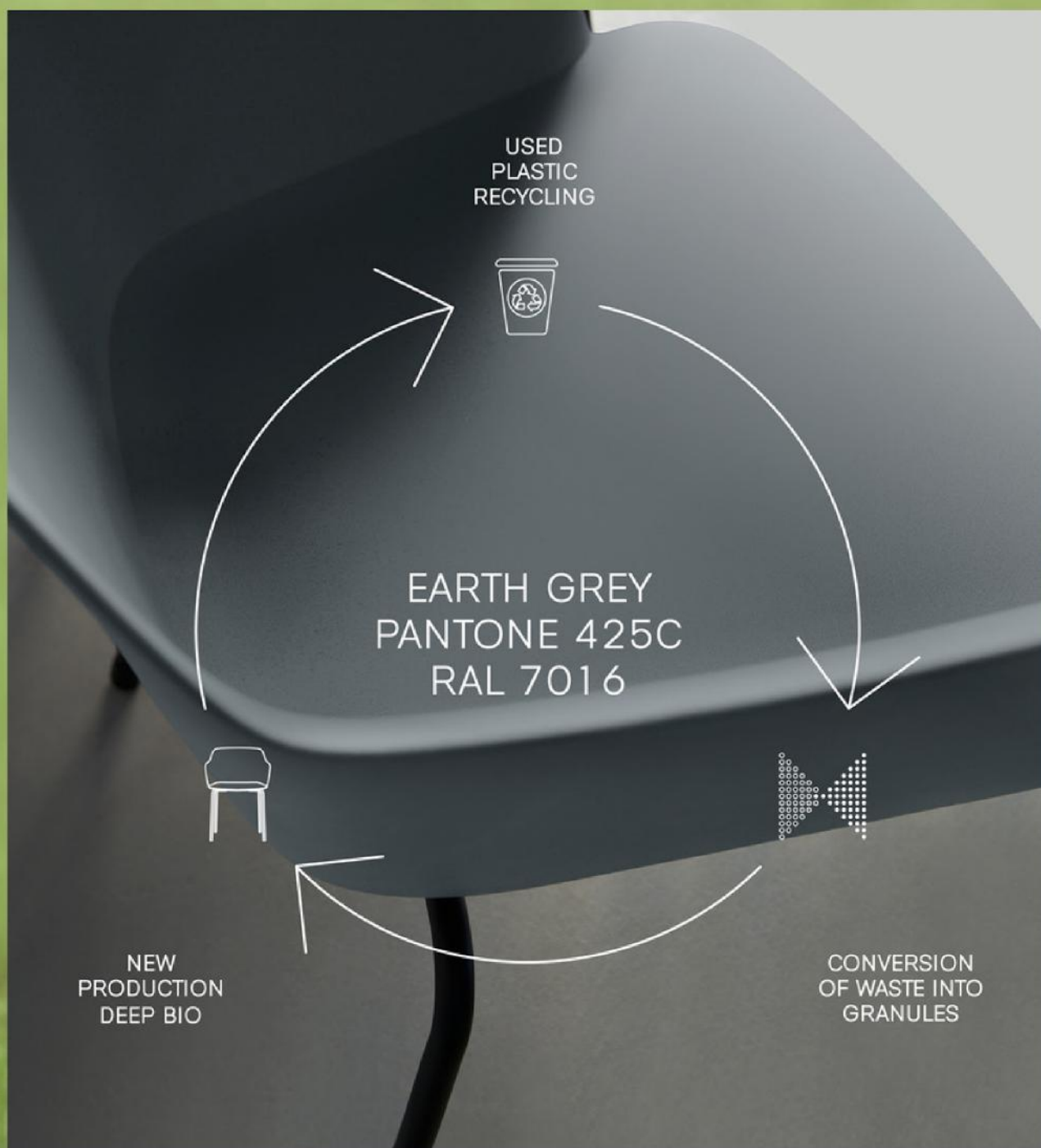
nDreams

Furniture Pictured: New
York Sofa, Manta
armchairs and Talk
coffee table

As an employer, it is important to recognize the value of human interaction and engagement within the workplace and to take steps to support and nurture these connections. This can include creating opportunities for employees to collaborate, such as through team-building activities, group projects, and regular meetings and discussions. It can also involve providing a supportive and inclusive work environment, where employees feel comfortable expressing themselves and forming connections with their colleagues.

Additionally, employers can promote mental health and well-being by encouraging employees to take breaks, engage in stress-reducing activities, and connect with others outside of work. Overall, fostering human interaction and engagement within the workplace can lead to increased job satisfaction, productivity, and overall well-being for employees.

So for some of us.... being in the office can feel like a slog, but at least if we're all together in the office we can fight the blues as a team, in a space we Love.



DEEP BIO

Designed with sustainability in mind.

Featuring an innovative biopolymer, a material derived from renewable energy sources. This eco-friendly material is completely compostable and has long-lasting properties while maintaining the same thermo-mechanical properties as traditional plastic materials.

What are Biopolymers?

Biopolymers come from 80% renewable sources which not only are particularly long-lasting over time, but they are also scratchproof, elastomer-modified, compostable, and up to 100° C heat resistant. The use of this material allows the reduction of CO2 emissions, maintaining the same strength guaranteed by plastic materials. It is precisely the composting process of this material, that is the ability to transform it into compost, through the biodegradation of organic materials in the presence of oxygen, which makes it perfect even for industrial use. Plantura is subject to a series of meticulous controls in accordance with EN 13432 European norms in terms of the eco-toxicity of the material.

To be more specific, Plantura biopolymers are biodegradable: they are decomposable by 90% into CO2, water, and minerals, in 6 months. In 12 months, at least 97% of the product is decomposed in micro-particles that can be sifted.

One of the key advantages of biopolymers is that they can be processed using traditional plastic manufacturing techniques, such as extrusion, injection molding, and thermoforming. This means that companies can switch to biopolymers without significant changes to their existing manufacturing processes.

DeepBio is a synthesis between a minimal, simple design and comfort made from a Plantura biopolymer providing the same thermo-mechanical properties of its sister chair DeepPP made from traditional plastic.





Furniture Pictured: Deep PP, Bistrot, Cubo, Mobile Otto

PROJECT INSPIRATION

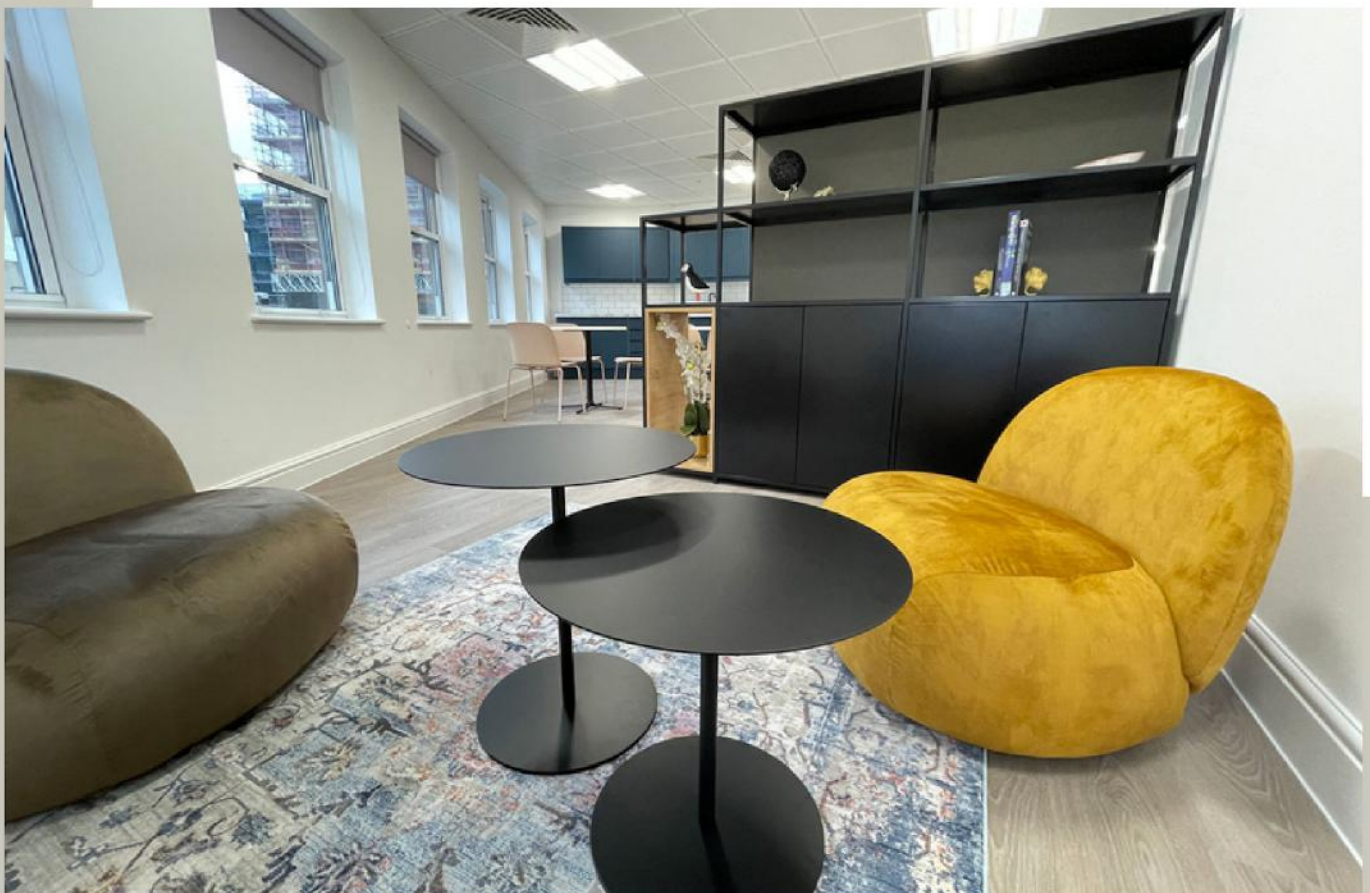
**Greyfriars Gate,
Reading**

Sagal was asked to create a space that provides a variety of work settings for the incoming occupier.

Offering both team and private working in formal and informal settings. Versatility is crucial, allowing reconfiguration to adapt to a tenant's specific needs.

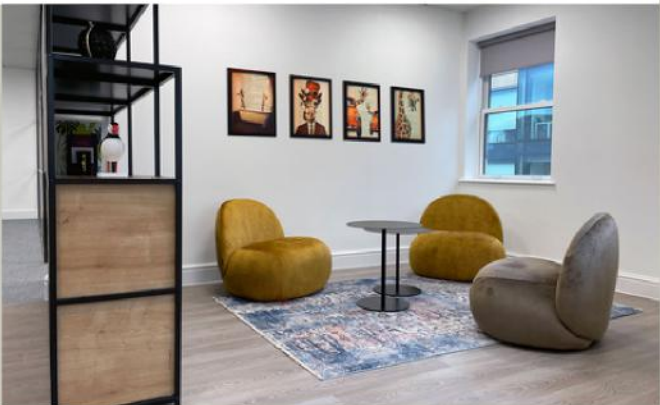


Furniture Pictured: Ramo, Keira, Hill, Cubo, Jolly

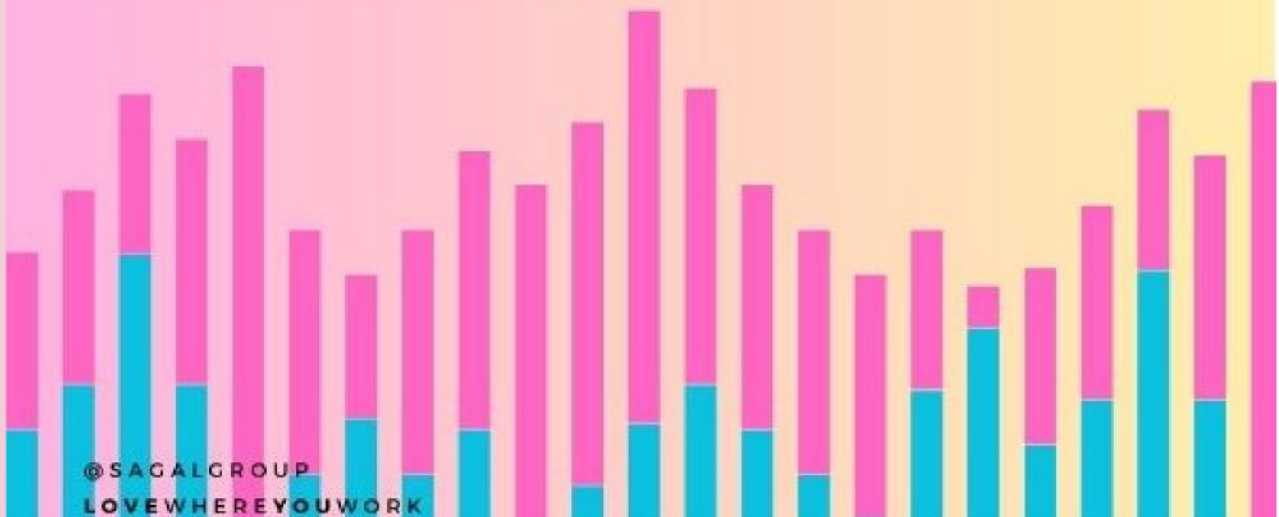




Furniture Pictured: Mobile Otto, Deep PP, Cubo, Manta, Ramo, Hill, Keira



WHY IS MY OFFICE NOISY? EXPLORING THE COMMON CAUSES AND SOLUTIONS.



SHUSSHH QUIET PLEASE!

It is impossible to be productive if you are distracted.

Acoustics are a crucial aspect of office design, and the level of noise in a workplace can significantly impact employee comfort and productivity.



THE NUMBER OF PEOPLE COMING INTO THE OFFICE HAS AFFECTED OUR WORKPLACE NOISE LEVELS,

In previous articles, we touch on 'are we more productive at home or the office?' and we also talk about the workplace becoming more of a destination for team collaboration. Despite all the positive aspects of bringing our teams into the office, including collaboration, new ideas, mentoring, culture, and learning, most business leaders overlook the issue of noise and distraction. But the answer isn't simply just work from home.

So, If we're making the office a hub for our teams to be their best, we need to address the noisy elephant in the room. With the increase in hybrid working, an office is no longer a place where workers are quietly lined up at desks. Instead, the focus is on collaboration and interaction with colleagues and customers, with multiple meetings taking place we are achieving a greater positive energy for being in the office but this also increases the level of noise in our open-plan environments. And we mustn't forget that some employees require quiet spaces to focus on their work within the workplace.



IPSOS Study on Workplace Satisfaction

An extensive international study by IPSOS, global market research, and consulting firm, found that 85% of office staff are dissatisfied with their working environments and have a hard time concentrating on their tasks. This is strongly correlated with the fact that open floor plans have become commonplace. The study also showed that typical interruptions, such as others' conversations, ringtones, loud typing, printers, mobile notifications, etc., cause staff to lose up to 86 minutes a day. Several studies show the negative impact of workplace distractions on mental health and workplace absenteeism.

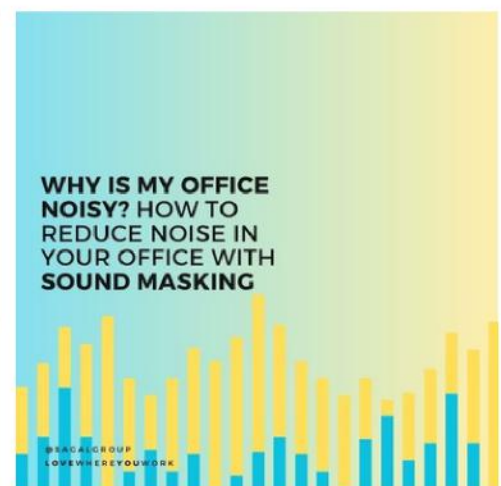
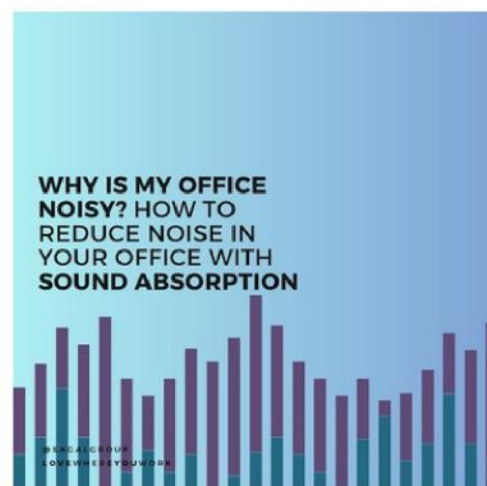
Due to the increased flexibility of hybrid working, the reduction in the number of people coming into the office has also affected our workplace noise levels, with a decrease in background noise, specific conversations are much more audible. The human brain can easily tune out background white noise, but specific sounds can be more challenging to ignore. Additionally, the ability to work from any location makes it easier to compare and notice the sound differences between various work setting



Bonnie & Wild | Duncalf

Achieving a productive and peaceful work environment in open-plan offices is an essential but challenging task. Rather than relying on guesswork, careful analysis of your space is a skill that must be cultivated to enhance productivity while reducing noise levels. Your office space should be designed to cater to your specific business needs, rather than blindly adopting the ideas of others.

In essence, we have two acoustic routes to explore or a mixture of both:





Furniture Pictured: DeepOne, Jolly, Level, Cubo

PROJECT INSPIRATION

**Metspace,
Farringdon**

Managed Space doesn't have to be boring and vanilla. Shape and form, plus beautiful fabrics have transformed this amazing space in Farringdon, awaiting it's new occupier



Furniture Pictured: Ramo, Cubo, DeepOne, Level, Jolly, Rudy, Timeless





Furniture Pictured: Ramo, Flexi, Osimo Workstations, Axcen, Cubo, Banquette Seating





sagal  creating
inspirational
spaces

t. 020 7253 7390

e. info@sagalgroup.co.uk

w. www.sagalgroup.co.uk

1st Floor, 77 Bastwick Street, London, EC1V 3PZ

@SAGALGROUP

LOVEWHEREYOUWORK