

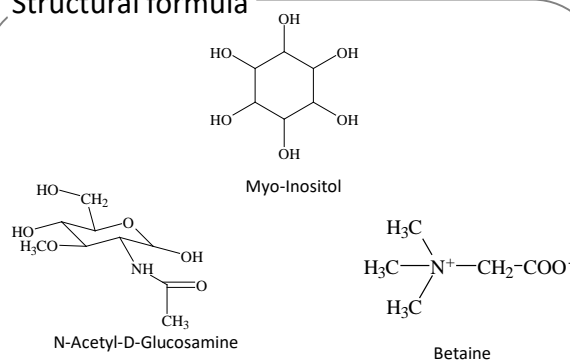
Analysis of Betaine, myo-Inositol and N-acetyl-D-glucosamine in Food,

This application describes the analysis of N-acetyl-D-glucosamine, betaine, and myo-inositol in foods. These compounds are derived from natural products and used as food additives or supplements.

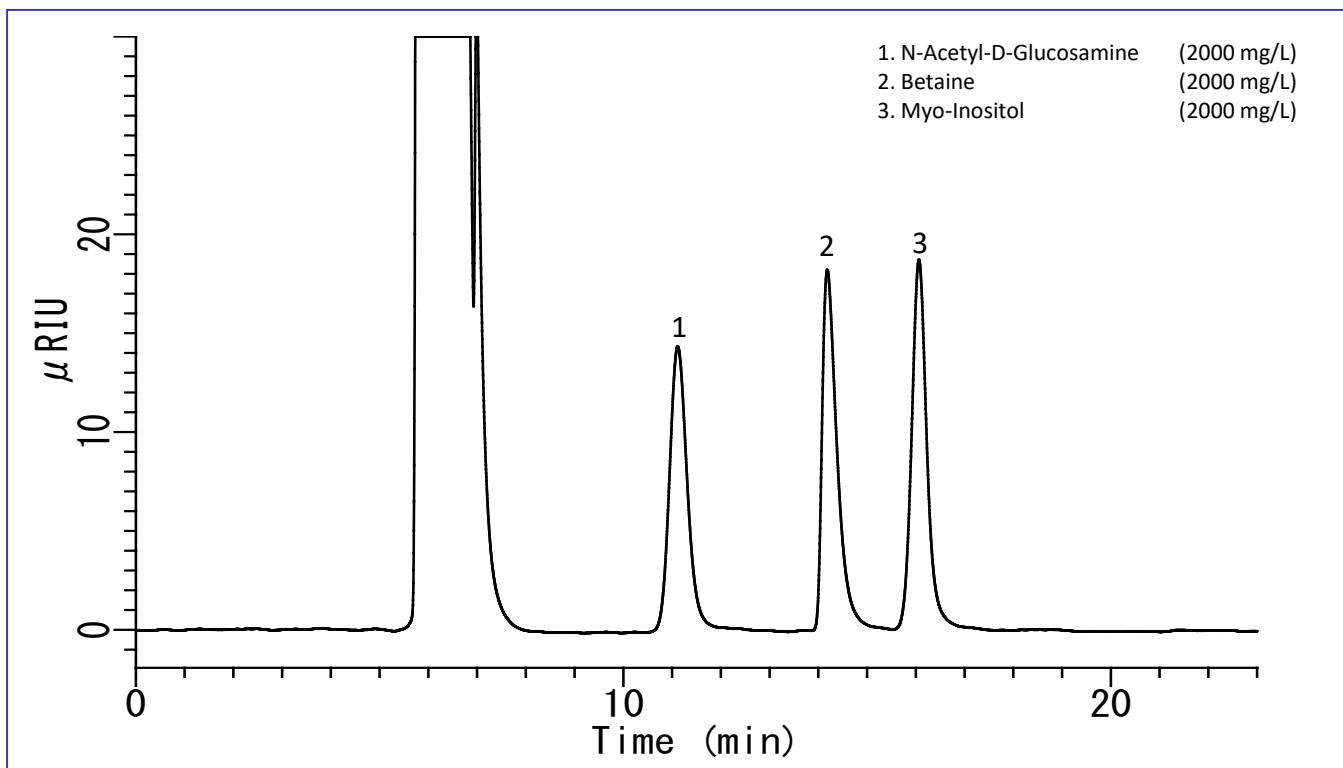
Analysis using Inertsil NH2 with aminopropyl groups offers good separations, and a differential refractive index detector is well suited to molecules with low UV absorption.

(K.Suzuki)

Structural formula



Example: Measurement of standard



HPLC conditions

Column : Inertsil NH2
(5 μm, 250 x 4.6 mm I.D.)

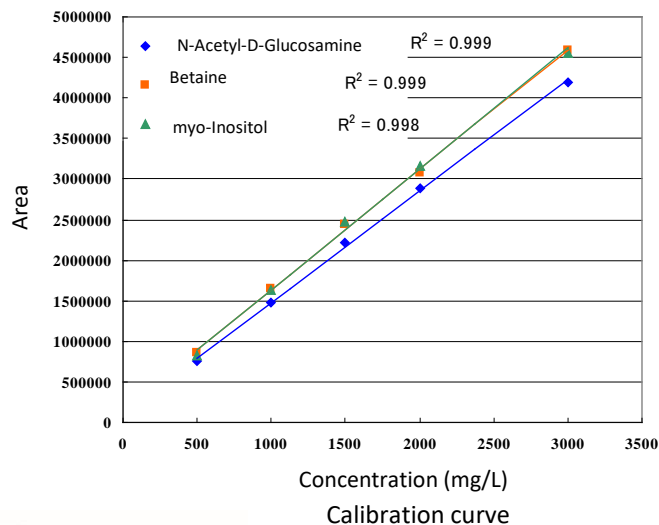
Eluent : A) CH₃CN
B) H₂O
A/B = 65/35, v/v

Flow rate : 0.5 mL/min

Column temperature : 40 °C

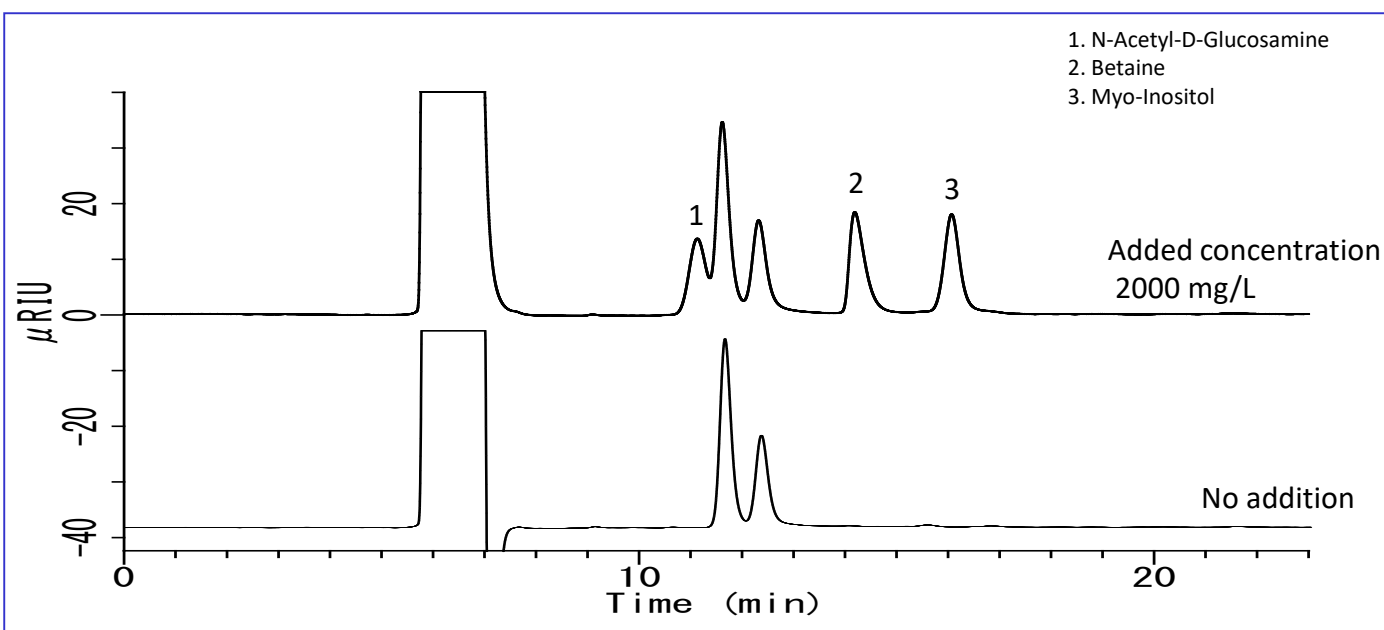
Detection : RI

Injection volume : 10 μL



Examples of analysis of soft drinks

Soft drinks were filtered through a 0.45 µm filter for analysis.



GL Sciences disclaims any and all responsibility for any injury or damage which may be caused by this data directly or indirectly. We reserve the right to amend this information or data at any time and without any prior announcement.

GL Sciences, Inc. Japan

22-1 Nishishinjuku 6-Chome
Shinjuku-ku, Tokyo,
163-1130, Japan
Phone: +81-3-5323-6620
Fax: +81-3-5323-6621
Email: world@glsc.co.jp
Web: www.glsciences.com

GL Sciences B.V.

De Sleutel 9
5652 AS Eindhoven
The Netherlands
Phone: +31 (0)40 254 95 31
Email: info@glsciences.eu
Web: www.glsciences.eu

GL Sciences (ShangHai) Ltd.

Tower B, Room 2003,
Far East International Plaza,
NO,317 Xianxia Road,
Changning District.
Shanghai, China P.C. 200032
Phone: +86 (0)21-6278-2272
Email: contact@glsciences.com.cn
Web: www.glsciences.com.cn

GL Sciences, Inc. USA

4733 Torrance Blvd. Suite 255
Torrance, CA 90503
Phone: 310-265-4424
Fax: 310-265-4425
Email: info@glsciencesinc.com
Web: www.glsciencesinc.com

International Distributors

Visit our Website at www.glsciences.com/distributors