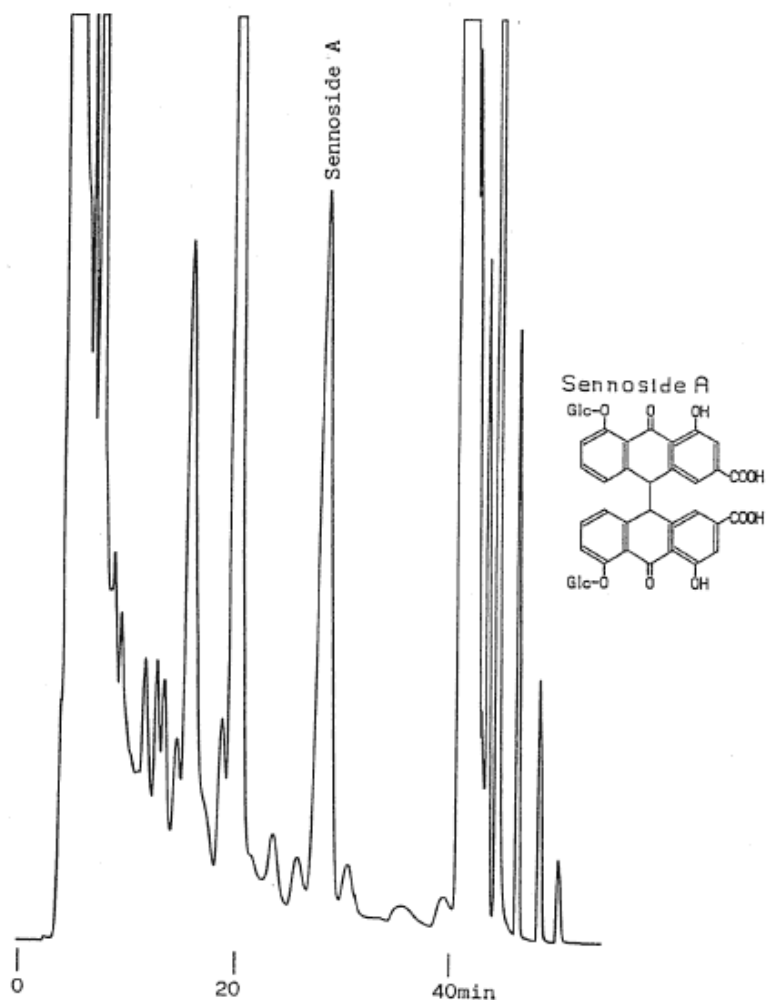


Purification of Rhei rhizoma

Data No. 146-0000



Column : Inertsil PREP-ODS

10µm

250 × 20mmI.D.

Column Cat. No. : 5020-31123

Eluent : CH₃OH/0.1% CF₃COOH=38/62

Flow rate : 10 mL/min.

Col. Temp. : 40°C

Detection : UV 270 nm

Injection Vol. : 1. 2mL

Sample : Rhei Rhizoma(50mg/mL)

Solutes

: 1. SennosideA