

TNE AGRI GROUP FOUNDATION



# Company Profile

Empowering Smallholder Farmers



[www.tneagrigrp.co.za/foundation](http://www.tneagrigrp.co.za/foundation)

Training  
Workbook  
for  
Smart &



# Company Profile





# TABLE OF CONTENT

**Executive Summary.....04**

**2. Vision, Mission & Strategic Intent.....04**

**3. The Opportunity & Rationale.....05**

**4. Role Within the TNE Agri Ecosystem .....05**

**5. Leadership & Team.....06**

**6. Social Impact & CSI Programmes .....08**

**7. Programme Implementation Approach .....09**

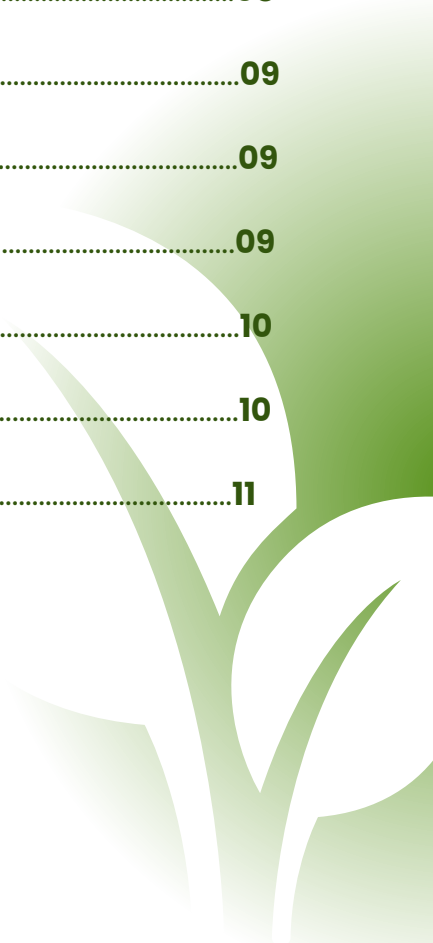
**8. Impact Focus .....09**

**9. Partnerships & Stakeholders .....09**

**10. Governance, Accountability & Compliance.....10**

**11. Funding & Partnership Opportunities .....10**

**Conclusion.....11**





# Executive Summary

TNE Agri Group Foundation is a non-profit organisation established to design and implement high-impact agricultural, food-security, and green-economy programmes across South Africa and Africa.

The Foundation serves as the **social-impact and CSI implementing partner** to TNE Agri Group (Pty) Ltd, ensuring a clear separation between commercial activities and public-benefit programmes in line with South African legislation and good governance principles.

Through practical, community-centred implementation, the Foundation focuses on strengthening household food security, building skills, supporting enterprise development, and enabling resilient local food systems.

## 2. Vision, Mission & Purpose



**Vision**

Resilient communities with secure food systems, sustainable livelihoods, and meaningful participation in local and regional economies.



**Mission**

To implement inclusive agricultural and green-economy programmes that strengthen food security, build skills, and enable economic participation for households, youth, and communities.



**Purpose**

The Foundation exists to translate systems thinking into practical, measurable social impact—ensuring that agriculture contributes to dignity, opportunity, and long-term sustainability.



### 3. Operating Context & Rationale



Food insecurity, youth unemployment, climate stress, and fragmented agricultural systems continue to impact households and communities across Africa.

Many well-intended interventions fail due to:

- Short-term project design
- Lack of systems integration
- Weak aggregation and market linkages
- Limited skills transfer and enterprise pathways

TNE Agri Group Foundation addresses these challenges through integrated, place-based programmes that connect production, skills, infrastructure, enterprises, and markets—ensuring lasting impact beyond project cycles.

### 4. Role Within the TNE Agri Ecosystem

TNE Agri Group Foundation operates as the implementation arm for all public-benefit, CSI, donor-funded, and development programmes.

Key Roles of the Foundation

- Programme design and implementation
- Community engagement and mobilisation
- Training, facilitation, and skills transfer
- Monitoring, evaluation, and reporting
- Donor and stakeholder accountability

This structure ensures:

- Clear governance and compliance
- Transparent financial and impact reporting
- Alignment between social impact and long-term systems sustainability



# 5. Leadership & Team



**Opheleleyo Qwabe**  
**COO**

MSA. (Master of Sustainable Agriculture) and Agricultural Economics (UFS). Leads and oversees Group operations, environmental stewardship, and climate-smart innovations, ensuring alignment between social transformation and enterprise sustainability.



**Nthabiseng Mahlobo**  
**Co Founder & CLO**

20+ years in people development and learning design. Holds a National Diploma in Computer Systems Engineering. Leads training, digital learning, and community development programmes.



**Boitumelo Mlambo**  
**CFO**

BCom (Economics & Econometrics, UJ) and BA (Hons) Psychology (Wits). Oversees financial systems, donor reporting, and project compliance with integrity and precision.





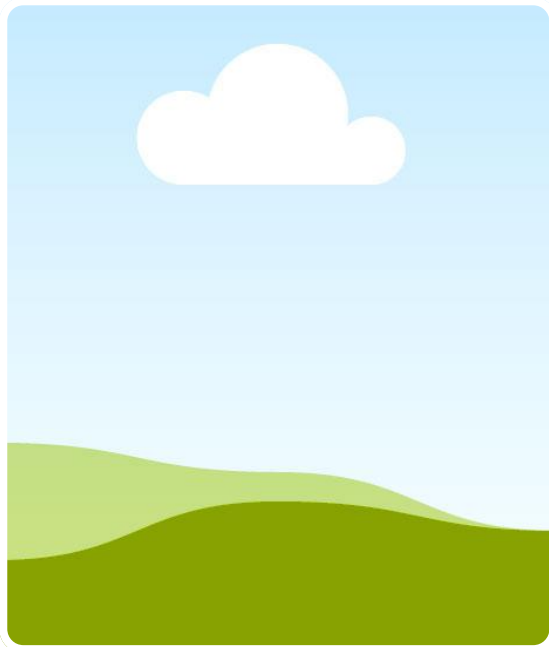
**Phakamile Nzuza,  
Soil Scientist &  
Agronomist  
(Projects Coordinator)**

BSc Agriculture and PGCE (Postgraduate Certificate in Education) (UKZN). Focused on soil fertility, land restoration, and sustainable farming training methodologies



**Dr. Jeremiah Hlahla,  
Agricultural Scientist  
& Agronomist**

PhD in Botany (UFS). Specialist in crop stress biology and plant resilience for climate adaptation and productivity enhancement



**Vacant  
Marketing &  
Communications**

Skilled in digital marketing, social media management, and event branding. Currently driving brand visibility and investor communications.



**Noluthando  
Mahlobo  
Brand Ambassador**

Grade 8/9, Author of *NoluGrow Book*, Passionate advocate for eco-literacy and sustainability among youth. Leads school-based environmental awareness campaigns under the "Every Family, A Farmer" initiative

# 6. Social Impact & CSI Programmes



## 1. ABV Family Programme

### The ABV Family Programme

strengthens household and community-level food security by equipping families with practical food-production skills and resource awareness.

The programme focuses on backyard gardens, homestead production, and community growing initiatives that improve nutrition, reduce vulnerability, and restore dignity.

#### Focus areas:

- Household food production and nutrition
- Practical skills transfer
- Waste, water, and energy awareness
- Entry into local food systems

## 4. NoluGrow Programme

### Children & Youth in Agriculture

#### The NoluGrow Programme

introduces children and youth to agriculture through hands-on growing, environmental education, and entrepreneurship awareness.

The programme aims to inspire a new generation that understands food systems, sustainability, and agriculture as a viable pathway for future livelihoods.

#### Focus areas:

- School and community growing initiatives
- Environmental stewardship
- Youth skills development
- Agri-entrepreneurship mindset

## 2. AgriVillage Food Network Africa Programme

### The AgriVillage Food Network Africa Programme

is a continental initiative focused on connecting households, farmers, aggregation hubs, enterprises, and markets into integrated and resilient food networks across Africa.

By strengthening coordination across the food value chain, the programme supports food security, inclusive trade, and sustainable economic participation while advancing Africa's shared food-systems vision.

#### Key focus areas include:

- Building interconnected food networks across countries and regions
- Strengthening aggregation, storage, and distribution systems
- Supporting cross-border and intra-African trade
- Improving market access for farmers and enterprises
- Advancing inclusive and resilient African food systems

## 6. Invest in Agri Namibia Programme

### The Invest in Agri Namibia Programme

adapts the Invest in Agri model to Namibia's agricultural context, supporting sustainable production, enterprise development, and trade.

#### Focus areas:

- Context-specific farmer and enterprise development
- Market linkage and trade facilitation
- Regional value-chain integration
- Food security and economic resilience

## 3. Invest in Agri South Africa Programme

### The Invest in Agri SA Programme

supports inclusive agricultural development by strengthening farmer capacity, aggregation systems, and market access within South Africa.

The programme aligns community-level production with enterprise development and investment-ready value chains.

#### Focus areas:

- Farmer development and enterprise readiness
- Aggregation and coordination systems
- Market access and off-take support
- Local and regional food-economy strengthening

## 5. AgriVillage Food Network SA Programme

### The AgriVillage Food Network SA Programme

builds integrated local and regional food networks linking households, farmers, aggregation hubs, enterprises, and markets.

The programme reduces fragmentation across the food value chain and strengthens inclusive participation in South Africa's food economy.

#### Focus areas:

- Localised food production networks
- Aggregation, storage, and distribution systems
- Agro-processing and enterprise development
- Market access and institutional procurement



# 7. Programme Implementation Approach



TNE Agri Group Foundation implements programmes using a **Theory of Change framework**, ensuring:

- Clear objectives and indicators
- Measurable social and economic outcomes
- Transparent reporting to donors and partners
- Learning, adaptation, and continuous improvement

## Our Implementation Principles

- Community-centred delivery
- Practical, hands-on learning
- Systems integration (not isolated interventions)
- Partnership-driven execution
- Long-term sustainability focus

# 8. Impact Focus

## Household & Community Impact

- Improved food security and nutrition
- Skills development and self-reliance
- Dignity and community participation

## Youth & Skills Impact

- Agricultural awareness and education
- Practical skills development
- Entrepreneurship pathways

## Local Economy Impact

- Organised producer networks
- Reduced post-harvest losses
- Stronger local food systems

# 9. Partnerships & Stakeholders

The Foundation works in collaboration with:

- Households, farmers, and community groups
- Schools, youth organisations, and NGOs
- Municipalities and government departments
- CSI partners, donors, and development agencies
- Research and training institutions

This collaborative approach ensures relevance, scale, and shared ownership of outcomes.



## 10. Governance, Accountability & Compliance



TNE Agri Group Foundation is committed to the highest standards of governance, ethics, and accountability.

### Key governance principles include:

- Clear separation from commercial activities
- Transparent financial management
- Independent oversight structures
- Compliance with South African NPO and CSI regulations

All programmes are subject to structured monitoring, evaluation, and reporting processes.

## 11. Funding & Partnership Opportunities

TNE Agri Group Foundation partners with donors, CSI contributors, DFIs, and development agencies to:

- Fund and scale social-impact programmes
- Support community and youth development initiatives
- Strengthen food security and local economies
- Deliver measurable and accountable impact

Funding models include **programme funding, multi-year partnerships, pilot initiatives, and co-implementation arrangements.**



# Conclusion



TNE Agri Group Foundation is a purpose-driven implementing partner committed to building resilient food systems, empowered communities, and sustainable livelihoods.

Through practical implementation, strong governance, and systems-based thinking, the Foundation delivers lasting social impact aligned to Africa's development priorities.



## Get in Touch with us



We look forward to keeping in touch with you and discussing how we can grow together towards a sustainable agricultural future.



**Phone**

+2765 - 8495 - 5841 /  
+2773-1436-713



**Address**

Plot 2 Maxley Small holdings,  
Bloemspruit, Bloemfontein, 9364



**Website**

[www.tneagrigroup.co.za/foundation](http://www.tneagrigroup.co.za/foundation)



**Email**

[Office@tneagrigroup.co.za](mailto:Office@tneagrigroup.co.za)



**TNE**

**AGRI GROUP**

**FOUNDATION**

