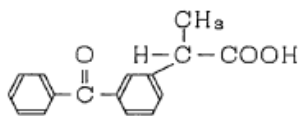
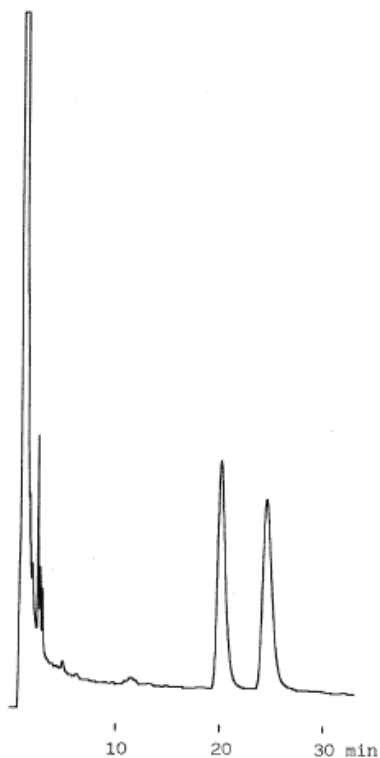


Ketoprofen in Plasma

Data No. LA359-0000



Column : Bioptic AV-1
5 μ m
150 \times 4.6mm I.D.

Column Cat. No. : 5020-02511

Eluent : CH₃OH/0.1M KH₂PO₄ + 0.2% H₃PO₄=15/85

Flow rate : 1.0 mL/min.

Col. Temp. : 25°C

Detection : UV 210nm

Injection Vol. : 5 μ L

Sample : Ketoprofen 2.2mg
in Coagulation Control Plasma 4mL

Solutes : Ketoprofen