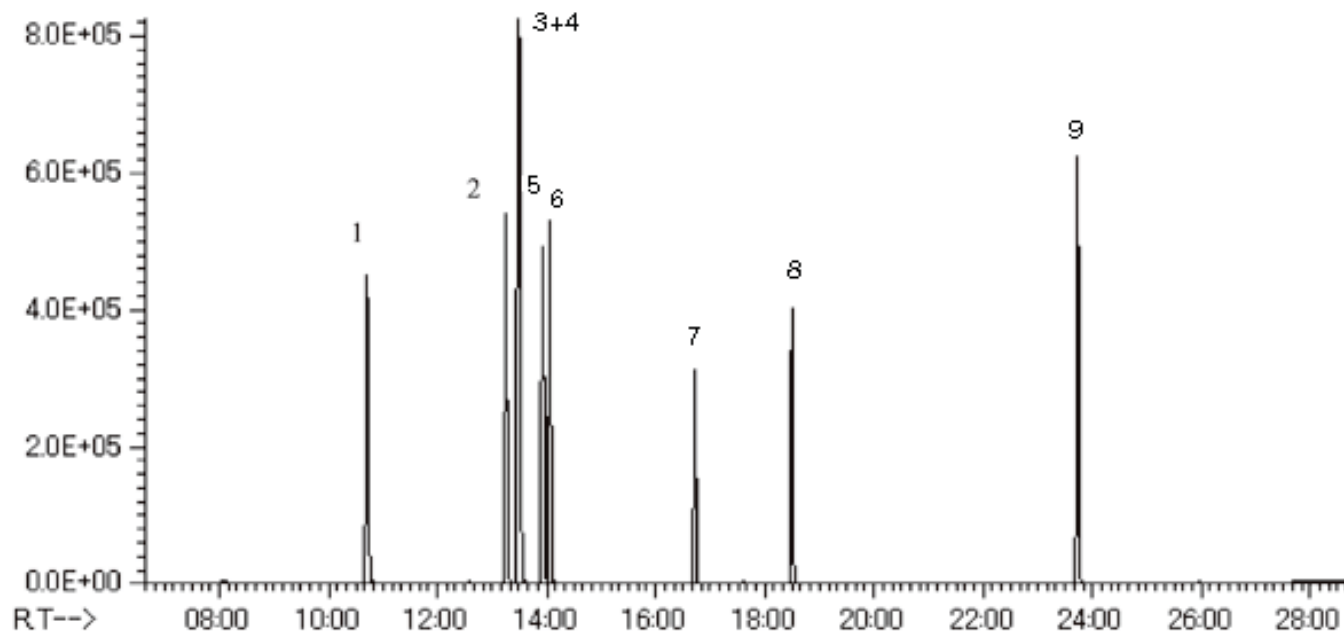


# InertSearch™ for GC

InertCap® Applications

## Indoor air

Data No. GA061-0000



System : GC/MS T-Dex II  
Column : InertCap 1MS  
0.25mm I.D. × 60m df = 0.25 μm  
Column Temp. : 40°C (5min) → 10°C/min → 280°C (21min)  
Carrier Gas : He 1mL/min (constant flow)  
Injection : TD/Split 1 : 5  
Detection : MS Scan  
Sample : STD for indoor air: each 100ng Solvent : Methanol

Solutes : 1. Toluene  
2. Ethylbenzene  
3. m-Xylene  
4. p-Xylene  
5. Styrene  
6. o-Xylene  
7. p-Dichlorobenzene  
8. Nonanal  
9. Tetradecanal