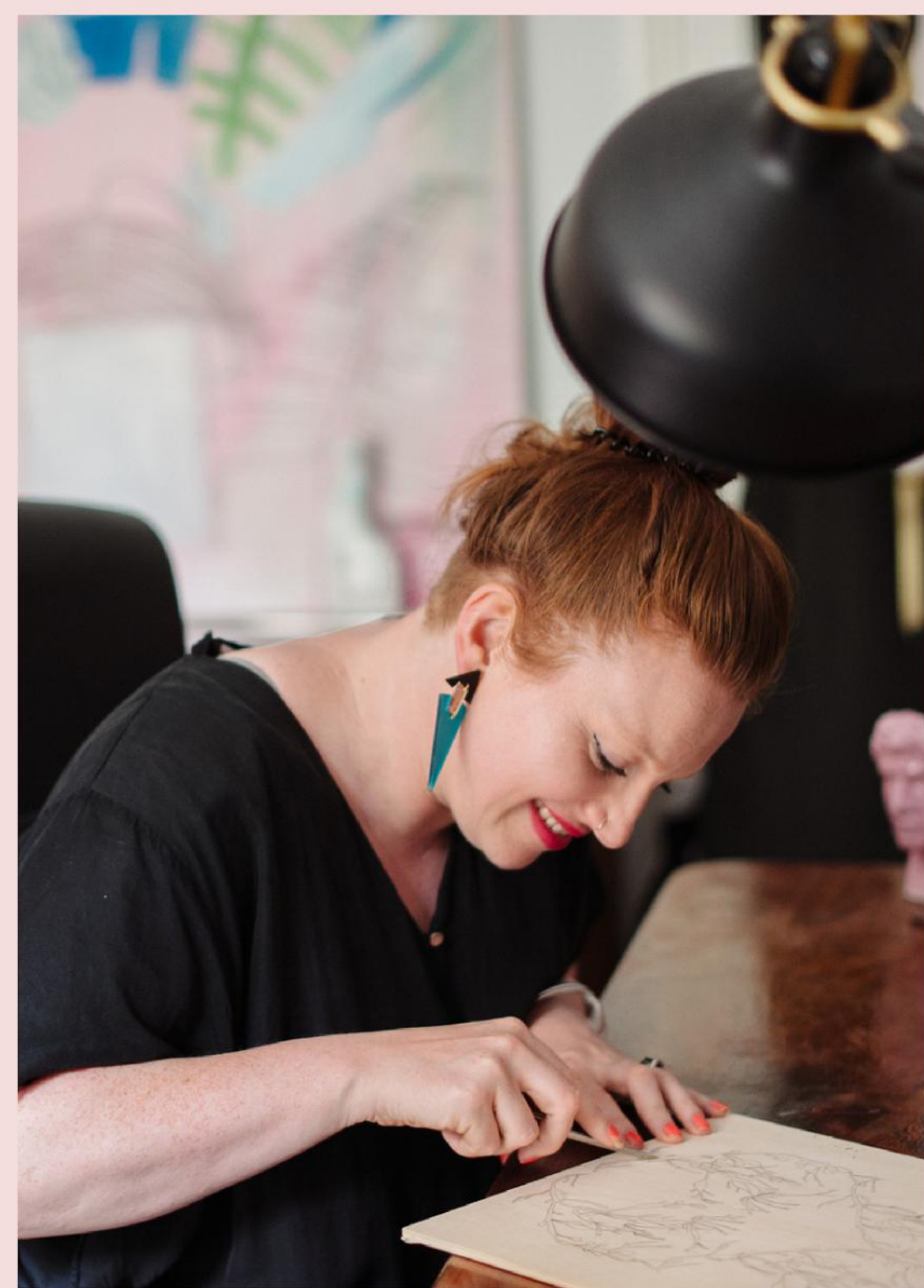





ANNIKA REED STUDIO

LOVE A LIFE LESS
ORDINARY AND HONOUR
AN ECLECTIC, TEXTURED
AND COLOURFUL HOME.





In a world craving variety and originality, Annika Reed Studio offers unique designs for people who love a life less ordinary.

Annika Reed designs limited edition and bespoke wallpapers and fabrics that bring beauty and wonder into a space.

The age-old art of woodblock printing is in decline, and Annika is on a one-woman mission to revive the craft and bring the quality of delicate woodblock prints into the homes of discerning people seeking a blend of luxury, burst of colour and exquisite textures.

Often based on minute details and personal discoveries made in the course of her day-to-day wanderings, Annika Reed's designs each tell their own story -- from the absurd to the fabulous, and always steeped in history and curiosity.

AS SEEN IN:

HOUSE
& GARDEN

The
INDEPENDENT

AD
ARCHITECTURAL DIGEST

ELLE
DECORATION

Living
etc

HOMES
& GARDENS

PERIOD LIVING

METRO

MODERN
HOME

London
Evening
Standard

REAL
HOMES

COUNTRY LIVING



ANIMALS AND BIRDS



Red Coat



Pegasus



Winged Lion



Pair of Dogs



Tiger Tiger



The Anteater



Tibetan Tiger



Jackdaw and a Peacock Feather



Chattering of Choughs



Legless Birds of Paradise

RED COAT



Stone



Tapestry

Call in the cavalry!

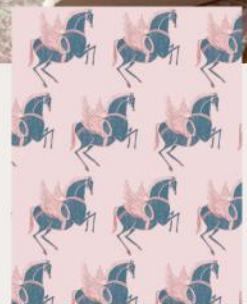
Red Coat was inspired by a drawing from 1770 of a redcoat soldier and has been reworked here to embody all the young adventurers who dream of exploring the world.

This wallpaper will encourage stories, tall tales, imagination, and adventure.

PEGASUS



Midnight



Dusk

Transform your home into a stage where reality and imagination merge.

Have you ever dreamt of soaring astride a winged horse? The Pegasus is the stuff of dreams, and this design invites you to let loose your imagination and explore worlds of wonder.

WINGED LION



Mustard



Delft Blue

Who knew lion's could fly? Let your imagination run wild and unleash Winged Lions to roar across your walls. The design inspired by ancient mythology is perfect for creating an interior with a sense of wisdom and curiosity, and is as appealing to children as it is to grown-up eyes.

PAIR OF DOGS



Vintage Brown

Delft Blue

TIGER TIGER

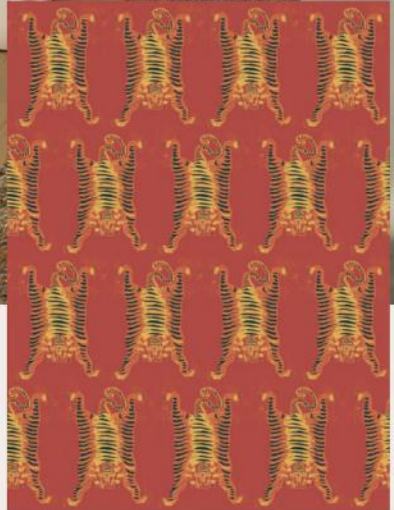


Jasper

Morganite

Serpentine

TIBETAN TIGER



Burnt Orange

Tigers are endlessly fascinating, with their lithe elegance, fierceness and strength. Invite the tiger's power into your home with this Tibetan - inspired print. This pattern brings a playful element to any room while honouring the traditions and strength associated with the tiger in Tibet. Be bold, be daring and embrace the power of the tiger in your home.

THE ANTEATER



Anteaters Breath

Pink Anteater

THE ANTEATER

LEGLESS BIRD OF PARADISE



Prehnite



Emerald

CHATTERING OF CHOUGHS



Hooker and Currant



Deco Blue



Arsenic Green

JACKDAW AND PEACOCK FEATHER

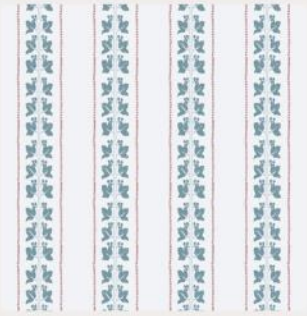


Folk

Design an interior imagined by folklore with this print inspired by the Aesop Fable: A Jackdaw and Peacock Feathers. The wallpaper embraces the earthy, rustic colours of these traditional tales, creating a room with a sense of morality and curiosity for both children and grown-ups alike.



BOTANICALS



Ivy



Olive



Branch of Mango



Rubber Plant



Gatty's Kelp Forest

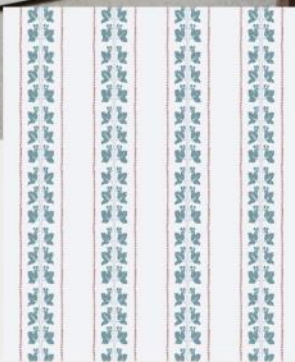


Climbing Vine



THERE'S SOMETHING FOR EVERY ROOM IN THE HOUSE, BUT NOT EVERY HOUSE ON THE STREET.

IVY



Adorn your walls with climbing Ivy and bring any space - big or small - to life. The wallpaper's vertical stripes elongate a room and make your ceilings appear taller in its simplistic colour palette. The beautifully sophisticated pattern is my daughter's namesake, and has been designed with both children and grown ups in mind.

Ivy is a botanical beauty, and this wallpaper is a timeless statement of natural elegance.

Ivy Blue

OLIVE



Breathe life into any space - big or small - with the climbing vines and symbolic branches of Olive. Synonymous with peace, the olive branch wallpaper brings a sense of calm into your home with its earthy green colourway and simple repeated pattern.

Olive Green

BRANCH OF MANGO



Pink Fruit

RUBBER PLANT



Rubber Blue

GATTY'S KELP FOREST



Deep Blue Sea



Sea Foam Green

Gatty's Kelp Forest is a sensuous and elegant wallpaper honouring the work of Margret Gatty and her life's research into seaweed. Echoing the beautiful formation of the Kelp Forest, stripes are a great way to create the illusion of space, making rooms appear wider or taller.

CLIMBING VINE



Beryl and Porcelain



Beryl and Blush



Beryl and Peacock

This beautiful wallpaper features a climbing vine that grew up the side of my childhood home. Bring this vine into yours and let the restorative powers found in its roots, leaves and flowers work their magic to calm and ground anyone who enters your space.

FLORALS



Jaipur



Marigold



Calla Lily



Honiton Lace



Agra



Lily of the Valley



Bindweed



Red Cotton Tree



JAIPUR



Pink City



Greens

AGRA



Blues



Pinks



Greens

Traditional meets modern in this ode to Indian craftmakers. Jaipur embraces the colours of India in this hand-carved woodblock print. The colourways celebrate Indian culture's association to both green and red, the first representing new beginnings and the latter symbolising love, commitment and strength. Which will you choose?

Be transported to the home of the wondrous Taj Mahal with Agra. The symmetrical floral was inspired by the eternal love between Shah Jahan and his soulmate Mumtaz Mahal, whose tombs have been immortalised in the iconic monument.

MARIGOLDS



Indian Sunrise



indian Sunset

LILY OF THE VALLEY



Leaves at Midnight



Valley Green

CALLA LILIES



Blooming Green

BINDWEED



Pink Trumpet



Yellow Trumpet

HONITON LACE

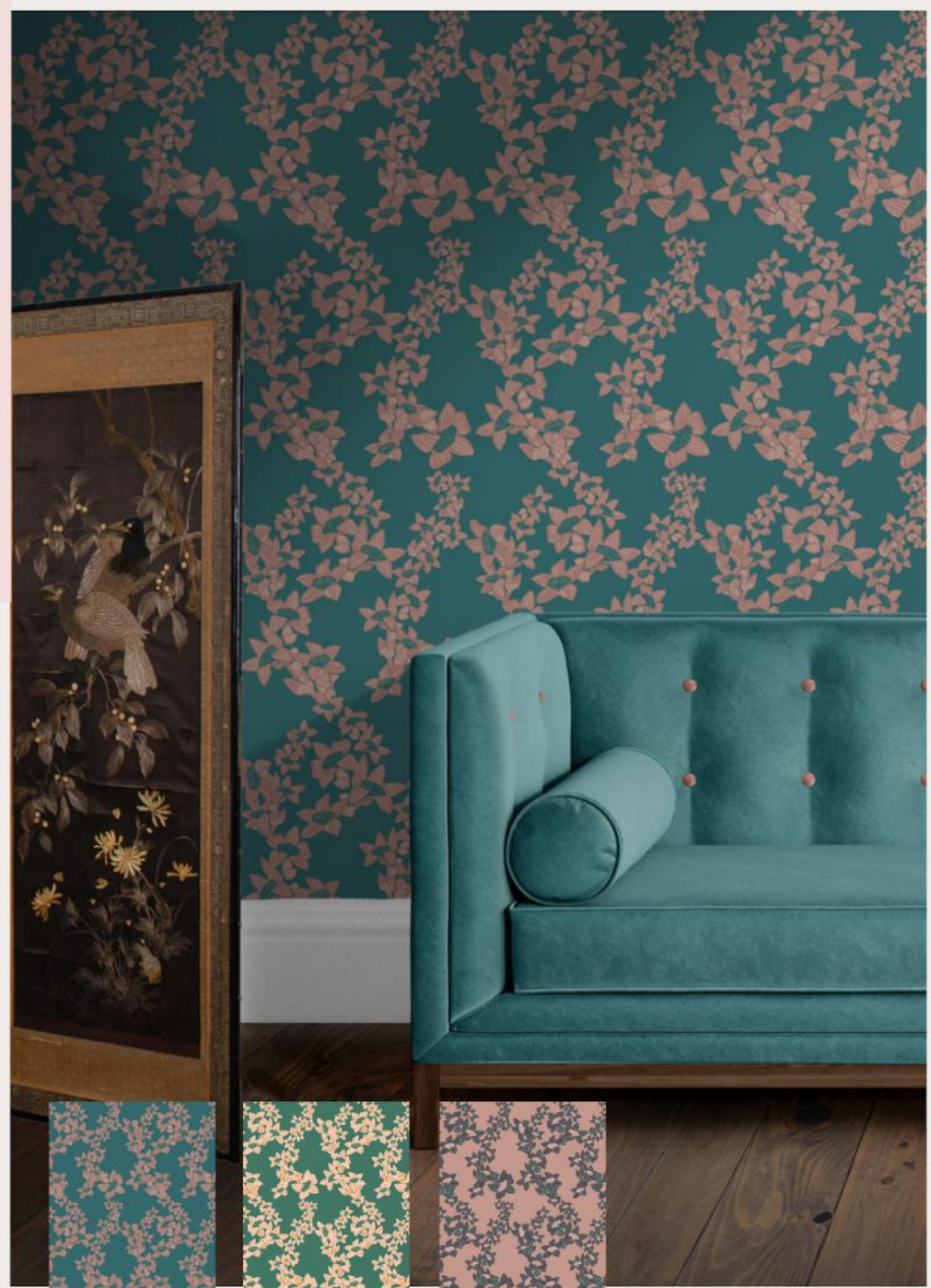


Noir



Branscombe Blue

RED COTTON TREE



Indian Teal



Jade



Bikaner Sand

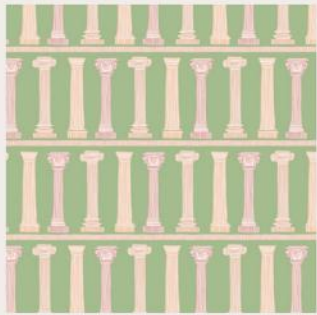
WHIMSICAL



A Muggle of Jugs



Pomegranate



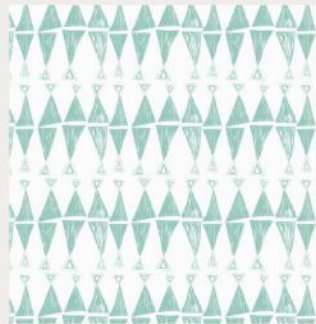
Temple



Aphrodite



Somerset Stripes



Triangles are my Favourite Shape



A MUGGLE OF JUGS



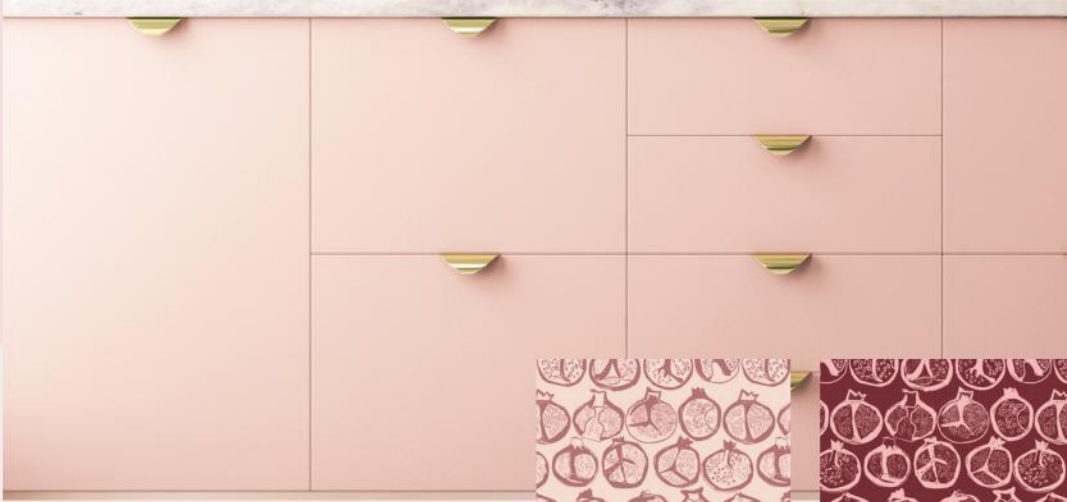
Earthy



Blues

Always wanted to embrace your inner goddess? Make your home a temple and adorn your walls with the eclectic Muggle of Jugs. Inspired by Athena, the Goddess of Pottery, the playful pattern transports any interior way back to the wonders of ancient Greece. The wallpaper celebrates this rich history in both a fresh blue and traditional terracotta colourway.

POMEGRANATE



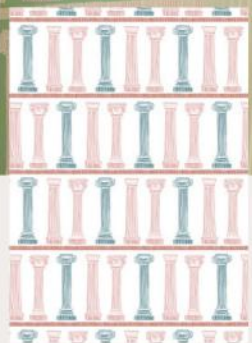
Dusk



Raspberry

Have you ever used a pin to eat a pomegranate? What beautiful, strange, fun, and dazzling fruits they are. An ode to a childhood memory of plucking each tiny seed out with a pin, without ever accomplishing a whole one. This wallpaper is pure joie de vivre and celebrates the pomegranate in all its juicy glory.

TEMPLE



Pure White



Green Goddess

Evoke the power of the goddess and your home becomes a temple to beauty, grace and joy. The column is the most prominent element in Ancient Greek architecture. Add these Columns to your home for a feeling of order, strength and balance.

APHRODITE



Shelly Blue



Sea Green

Aphrodite the goddess of beauty emerged from the sea atop a scallop shell. She is the embodiment of beauty and the essence of femininity. This paper is an homage to Aphrodite and the power of female presence, love and beauty.

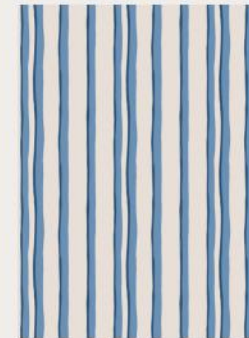
SOMERSET STRIPES



The playful stripe was inspired by English summers, pebble beaches and deckchairs. If only we could bottle that feeling to keep us going through winter. Oh wait, now we can! This striped design brings the freedom and freshness of summer to your home, in four new seaside-inspired colours.



Yellows



Blues



Pinks



Green

TRIANGLES ARE MY FAVOURITE SHAPE



Bleu

Mustard

Triangles are a fundamental element of design, and their simplicity offers endless possibilities. This playful triangle design gives your mind space to run wild -- what do you see? Available in blue & white or teal and blush, this pattern brings delight and movement to any room.



BESPOKE DESIGN

Yours is a home like no other, so it may be that you haven't yet seen the wallpaper or fabric of your dreams.

Did you know that we could design a pattern together, to fit your space.

As part of my bespoke service, I work closely with discerning clients like you -- we can create anything you want together. Simply email me at hello@annikareed and we can start dreaming together.

ANNIKA REED STUDIO X LICK



Bespoke shower curtain designed for Interior Designer: Ana Englehorn
[@anaengelhorn](mailto:anaengelhorn) www.anaengelhorn.com
Photography: James Balston



www.annikareed.com

hello@annikareed.com

(+44) 07595182179

[@annikareedstudio](https://www.instagram.com/annikareedstudio)