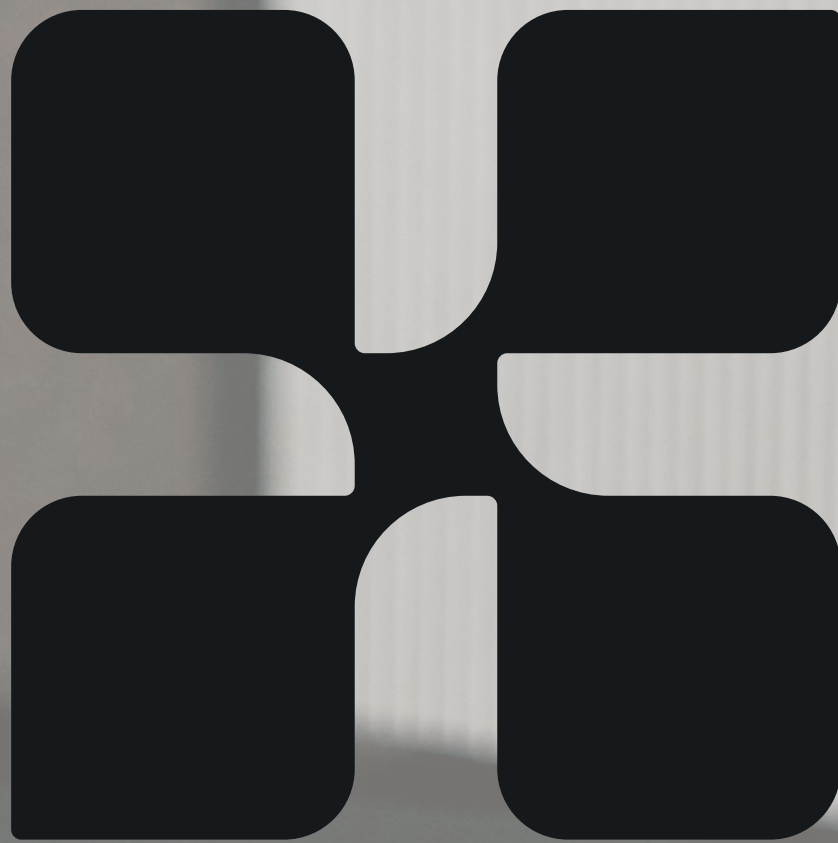


Felt Catalogue



apto plus

Index

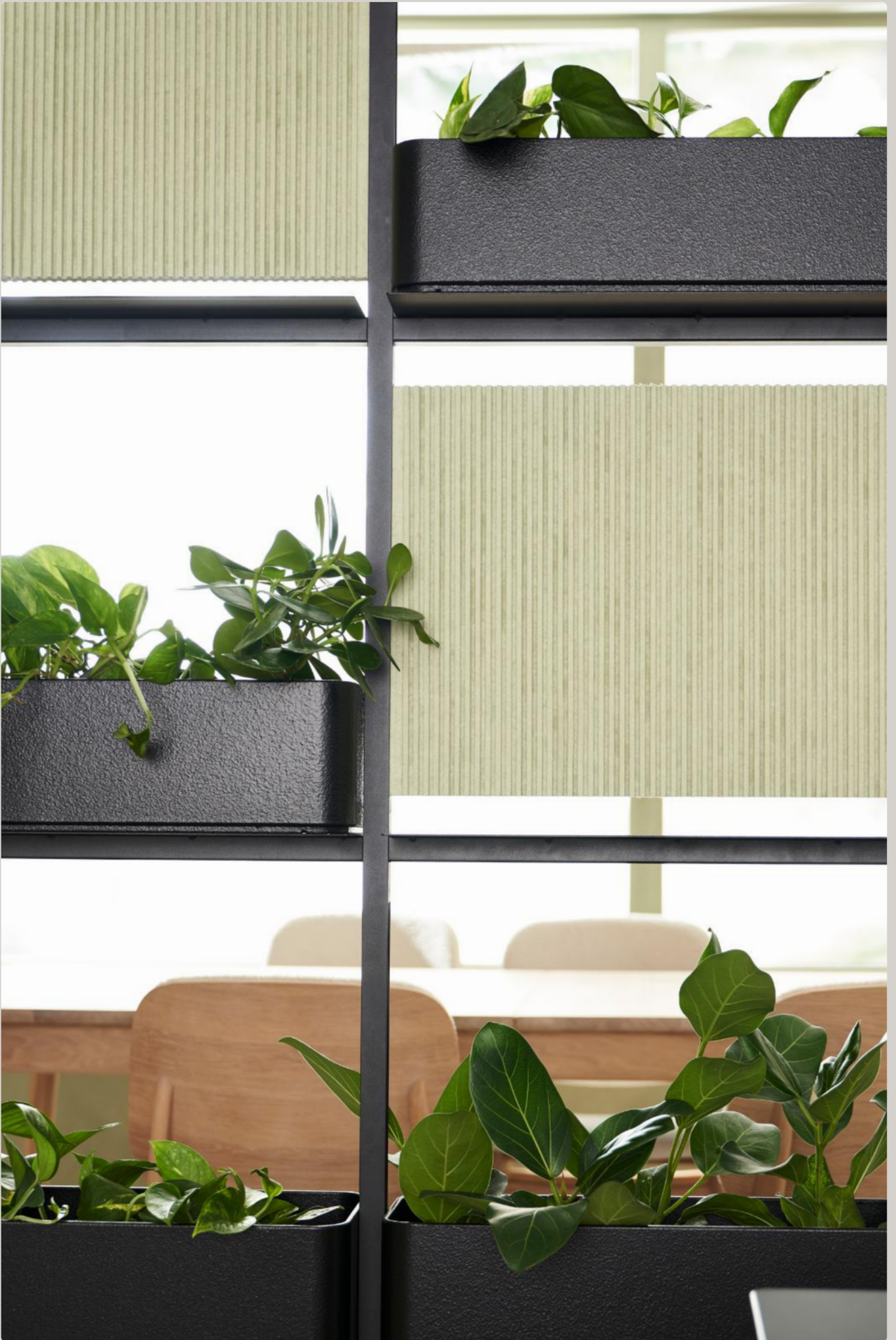
New production equipment

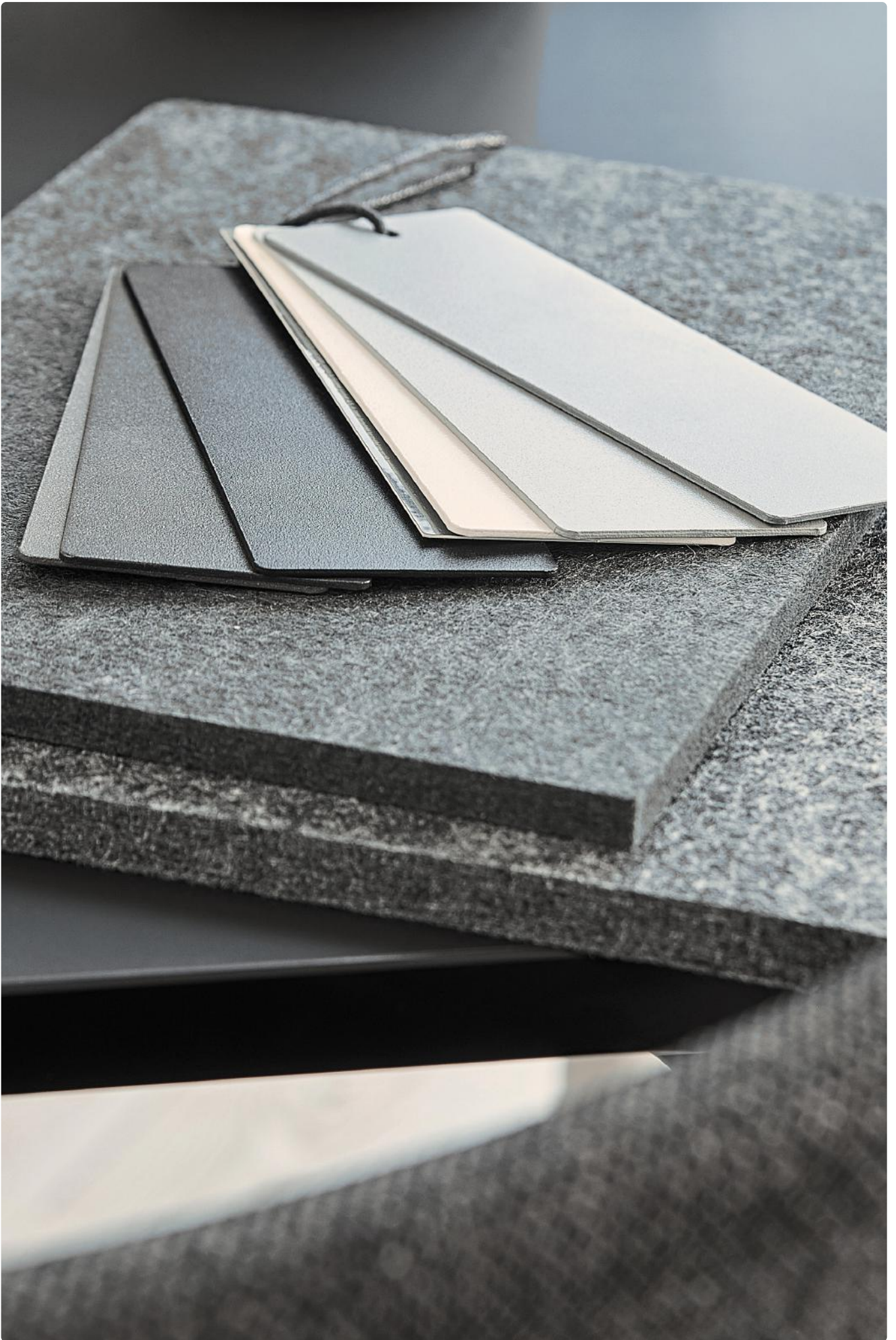
About the felt and colors

Project - **apto plus** Toolbox at Jyske bank

Project - felt as difining material

Inspiration





New production equipment opens new possibilities

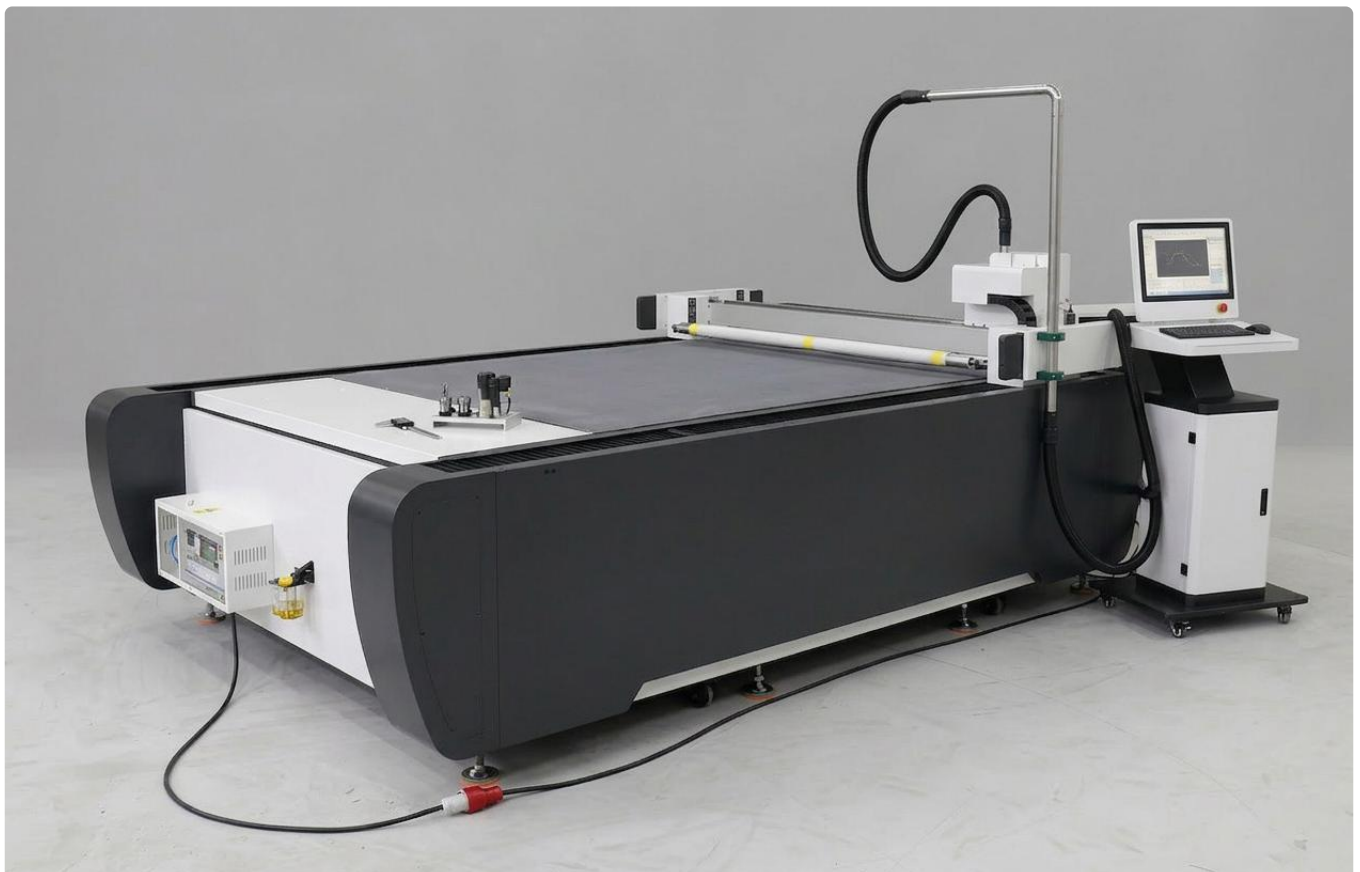
Felt has gradually become a significant part of our product range, which is why we have invested in a felt-cutting machine. This opens up new possibilities for the projects we can now take on. In many ways, it's only the material and imagination that set the limits.

With our new felt-cutting machine, we look forward to taking on even more exciting custom projects, and we are happy to be involved in the design process every step of the way.

Type of felt

12mm x1220 mm x 2440 mm (2400gsm)

24mm x1220 mm x 2440 mm (3500gsm)





Flexible Durable Recycled

About the felt and colors

Our felt is made from minimum 70% recycled plastic, offering a more sustainable alternative to conventional interior solutions. To lower CO₂ emissions, all felt products are designed for flat packing and efficient transport.

Felt is both flexible and durable, with a soft, textile-like surface that adds warmth, improves acoustics, and brings a sense of calm to the surroundings.

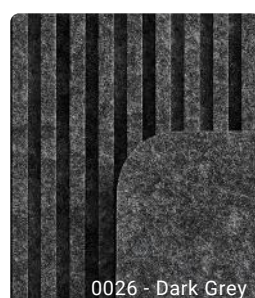
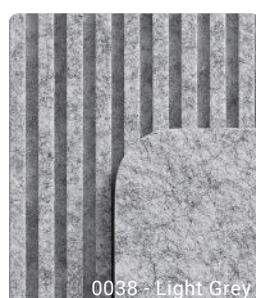
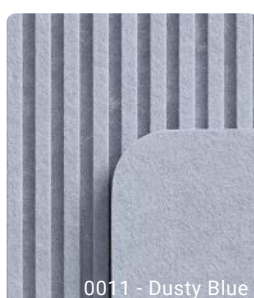
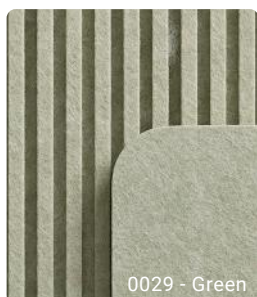
We offer a curated range of standard colours. All of which can be explored in our showroom. For specific colour choices or project needs, we always recommend speaking with our sales team.

Disclaimer: Differences between the samples and the final product can occur.

The colour samples in this collection are indicative. Lighting conditions and shadows may affect the perception of the felt colours.

Minor variations may also occur during production, as felt is made from different blends.

Standard Colours



Storage - apto plus Toolbox

In connection with this large-scale project with **Jyske Bank**, **Daarbak Design**, and a wide range of additional collaborators and suppliers, a close dialogue with the client led to the development of a refined felt toolbox concept.

The toolbox is designed to accommodate personal belongings that need to be cleared from the workspace at the end of the day, supporting flexible and activity-based work environments. It is dimensioned to hold essential items such as a keyboard, mouse, writing tools, and headphones—ensuring both practicality and a cohesive visual expression.

Each workstation is equipped with an integrated hook, preventing clutter on the floor and maintaining a clean spatial flow.

Complementing the toolbox, an Extend shelving system has been developed where the boxes contribute to a dynamic interplay of the five selected colours



Felt Toolbox project with Jyske Bank and Daarbak Design



Felt Toolbox project with Jyske Bank and Daarbak Design



Storage Box, w. Oak Handle
 H: 300 mm W: 330 mm D: 290 mm
 ● 3500-0008-0006 (Beige & Dark Grey)
 ● 3500-0008-0026 (Dark Grey)



Storage Box
 H: 300 mm W: 330 mm D: 290 mm
 ● 3500-0007-0006 (Beige)
 ● 3500-0007-0026 (Dark Grey)



Tool Box
 H: 175 mm W: 200 mm D: 490 mm
 Other colours available upon request
 ● 3500-0010-0026 (Dark Grey)*



Tool Box
 H: 175 mm W: 200 mm D: 490 mm
 Other colours available upon request
 ● 3500-0010-0038 (Light Grey)*



Tool Box
 H: 175 mm W: 200 mm D: 490 mm
 Other colours available upon request
 ● 3500-0010-0052 (Rusty Brown)*





Custom Felt Box with add-ons





Cable Tray Felt, 740
 H: 98 mm W: 740 mm D: 2189 mm
 ● 3000-0001-9000



Cable Tray Felt, 1150
 H: 98 mm W: 1150 mm D: 2189 mm
 ● 3000-0002-9000



Cable Tray Felt, 1470
 H: 98 mm W: 1470 mm D: 2189 mm
 ● 3000-0003-9000



Felt Tray, Large
 H: 44 mm W: 562/733 mm D: 312 mm
 ● 4000-0000-0026



Felt Tray, Small
 H: 44 mm W: 562/733 mm D: 260 mm
 ● 4000-0002-0026 (Dark Grey)
 ● 4000-0002-0038 (Light Grey)
 ● 4000-0002-0006 (Beige)
 ● 4000-0002-0034 (Petrol)



Insert Felt Tray
 Small & Large
 ● 4000-0001-9000 (Large)
 ● 4000-0003-9000 (Small)



Adapt Board

- 6000-0180-9000 H: 600 mm W: 1300 mm D: 30 mm
- 6000-0109-9000 H: 600 mm W: 1500 mm D: 30 mm



Cable Management, 1500 - incl. 2. Clamps
H: 600 mm W: 1500 mm D: 12 mm

- 6000-0074-9000
- 6000-0074-7033



Whiteboard Sidewall - incl. 2 Clamps
H: 495 mm W: 700 mm D: 22 mm

- 6000-0058-9000
- 6000-0058-7033



Clamp Partition Wall, 1500 - incl. 2 Clamps
H: 492 mm W: 1504 mm D: 28 mm

- 6000-0173-9000



Cable Tray Screen 1600 mm
H: 600 mm W: 1600 mm D: 164 mm

- 3085-0000-0026 (Dark Grey)
- 3085-0000-0038 (Light Grey)



Cable Tray Screen 1400 mm
H: 600 mm W: 1400 mm D: 164 mm

- 3084-0000-0026 (Dark Grey)
- 3084-0000-0038 (Light Grey)



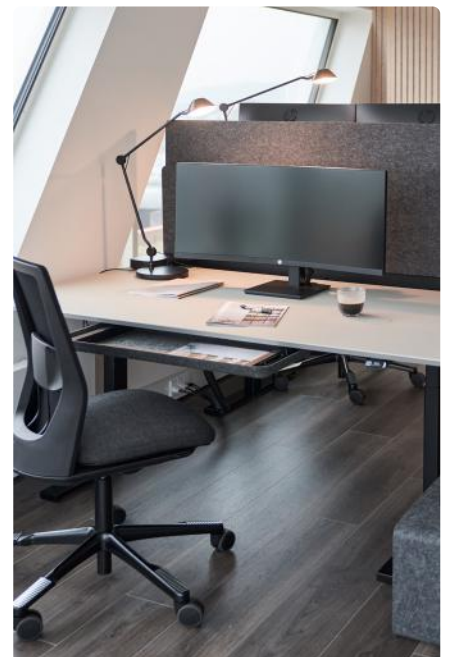
Cable Tray Screen 1060 mm
H: 600 mm W: 1400 mm D: 164 mm

- 3083-0000-0006 (Beige)

Felt as a defining material in functional elements

As part of the construction of new office buildings, the end client and **Third Space** placed strong emphasis on the design of individual workstations. Each employee should have everything they need at their private desk, without compromising aesthetics.

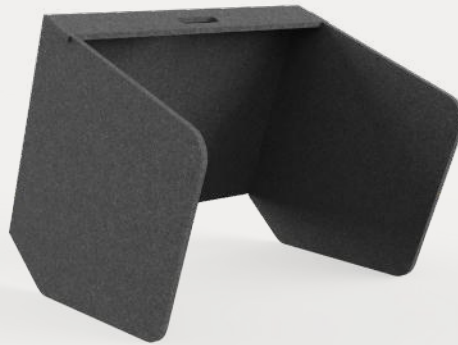
With a focus on clean desk solutions, cable management, and subtle screening, they chose our felt solutions. The result is a tidy, well-organized workspace with a soft, tactile atmosphere. The overall expression remains bright and light, while the felt adds warmth and a touch of Scandinavian character.







Portable Table Divider, Dark Grey
 H: 550 mm W: 700 mm D: 24 mm
 ● 3500-0005-0026



Flex Study
 H: 554 mm W: 668 mm D: 640 mm
 ● 3500-0006-0026 (Dark Grey)*
 ● 3500-0006-0029 (Green)*

Wall Mount, Flex Study (Capacity: 6 pcs.)
 H: 150 mm W: 100 mm D: 274 mm
 ● 3500-0009-9005



Lattice Table, Counter, Wall Mounted, 4P
 H: 2000 mm W: 1825 mm D: 800 mm
 ● 6400-0008-0029 (Green)*
 ● 6400-0008-0026 (Dark Grey)*



Lattice Table, 6P
 H: 2000 mm W: 1850 mm D: 800 mm
 ● 6400-0001-0029 (Green)*
 ● 6400-0001-0026 (Dark Grey)*







Extend 3D Free Standing, Plant Box & Shelf

H: 1206 mm W: 1675 mm D: 350 mm

● 6200-1157-7044 (Silk Grey)

● 6200-1157-9011 (Black)



Extend 3D Free Standing, Plant Box & Felt

H: 1206 mm W: 1675 mm D: 350 mm

● 6200-1158-7044 (Silk Grey)

● 6200-1158-9011 (Black)



Extend 3D Free Standing

H: 1206 mm W: 1000 mm D: 350 mm

● 6200-1159-7044 (Silk Grey)

● 6200-1159-9011 (Black)

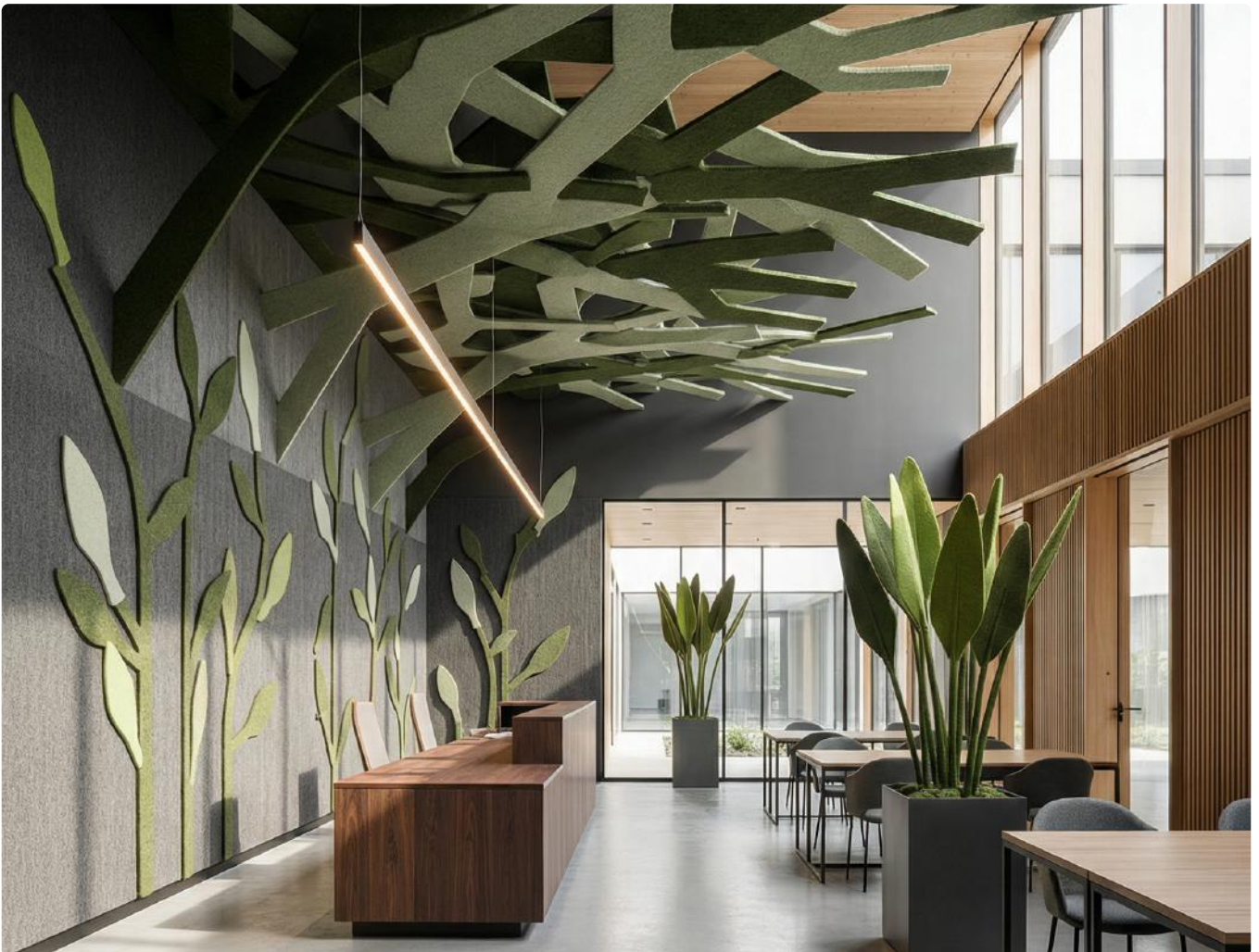




Extend Ceiling Mounted & green felt panels project with Jysk Indretning

The last pages, we showcase three segments where felt is featured: ceiling-mounted elements, decorative elements, and wall elements. *These are fictive environments created with AI for your inspiration.*

Hotel Lobby



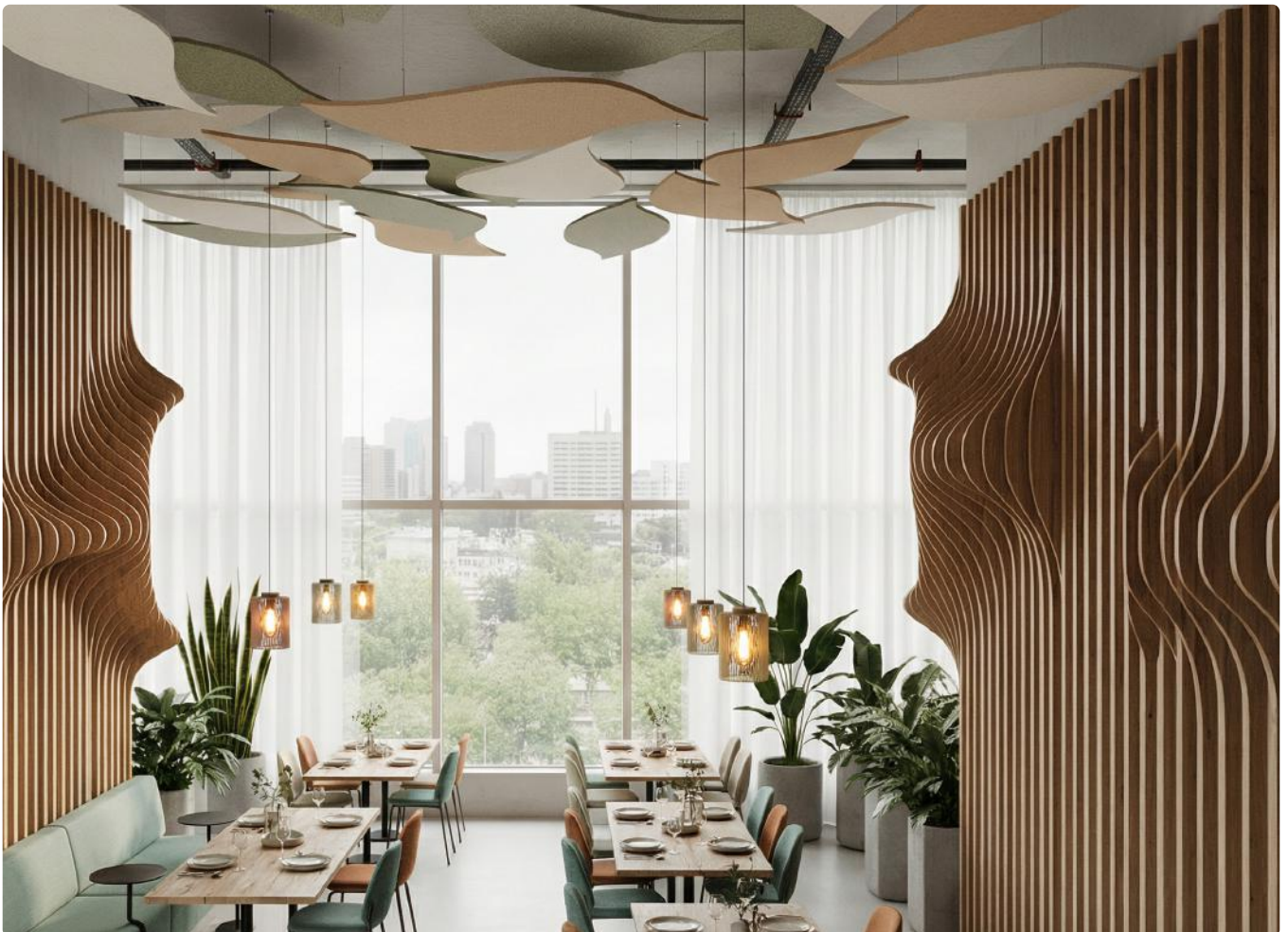




School Creative Space



Skyview Restaurant





Shall we create a tailored solution together?

We are happy to take part in the design process in close collaboration with architects and end clients. When it comes to combining form and function, we actively contribute our expertise in dialogue with all relevant stakeholders.

We understand that many projects require a bespoke solution, carefully adapted to the individual space, atmosphere, and color scheme.

Our showrooms in Silkeborg and Holte are always open for client visits, and we welcome you to explore materials, solutions, and possibilities together with us.

