

# Parkfield

Reayrt Mie | Ballasalla

↳ dandara

## ABOUT DANDARA

At Dandara we create award-winning homes which combine innovative design with the highest standards of quality. We build in the best locations and always with the customer in mind.

We work with local communities in order to ensure the developments we build enhance and complement the local surroundings and are designed with longevity so our customers will love living in them for years to come.

Our high standards are reflected in our dedication to our customers and the service they receive, cementing our position as one of the UK's most respected private housebuilders.





# WELCOME TO Reayrt Mie

Designed for low-maintenance modern living, these warm, energy-efficient new homes are conveniently close to everything you need.

Parkfield is a collection of beautifully designed homes within our popular Reayrt Mie development in Ballasalla. With a choice of styles, and comfort and quality built in - it's the perfect place to call home.







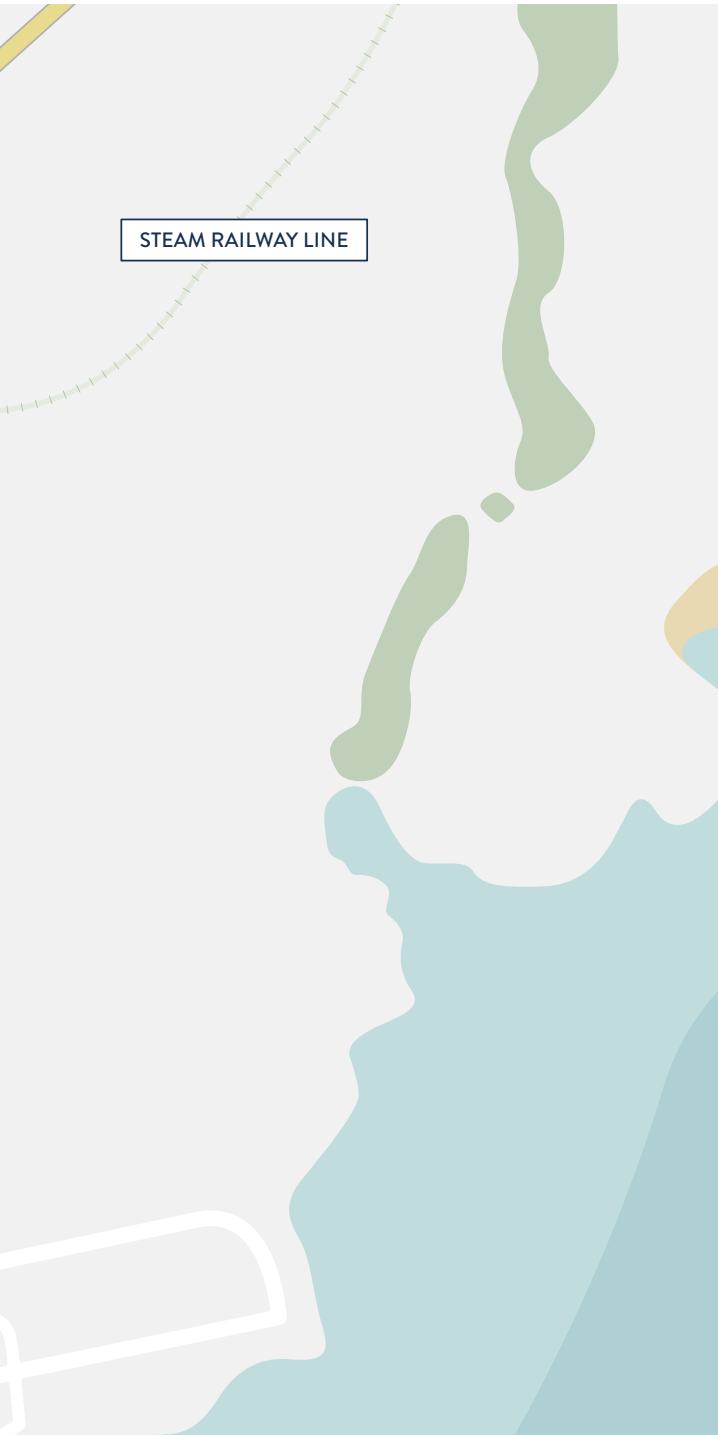


This Computer Generated Image of Parkfield at Reayrt Mie is indicative only









# THE PERFECT Location

Whether it's long walks with the dog, enjoying the garden, or spending time with friends and family, Reayrt Mie is ideally placed for a comfortable, convenient lifestyle.

The local pub, post office and village shop are all within walking distance, along with local schools. A wide range of amenities and the island's airport can be found just a few minutes' drive to the south in neighbouring Castletown.

Public transport links from Ballasalla are excellent, and the island's capital Douglas is only 15 minutes' drive to the north.

## EDUCATION

Happy Days Nursery .....	0.0 miles
Ballasalla Primary School .....	0.4 miles
Hopes & Dreams Nursery .....	0.4 miles
King Williams College .....	1.9 miles
Castle Rushen High School .....	3.3 miles

## LOCAL AMENITIES

Costcutter Convenience Store .....	0.0 miles
Spar Convenience Store .....	0.2 miles
The Whitestone Public House .....	0.3 miles
Ballasalla Medical Centre .....	0.3 miles
Ballasalla Village Shop & Pharmacy .....	0.3 miles
Dental Surgery .....	0.4 miles
Petrol Station .....	0.6 miles
Silverdale Glen & Cafe .....	1.0 miles
Nearest Supermarket .....	2.6 miles
Southern Swimming Pool .....	3.3 miles

## TRAVEL

Railway Station* .....	0.5 miles
Ronaldsway Airport .....	1.2 miles
Castletown .....	2.4 miles
Douglas .....	8 miles

\*IOM Steam Railway - seasonal operation only



# Site Plan







# The Beech 21

FOUR BEDROOM DETACHED HOME  
WITH GARAGE AND SUNROOM

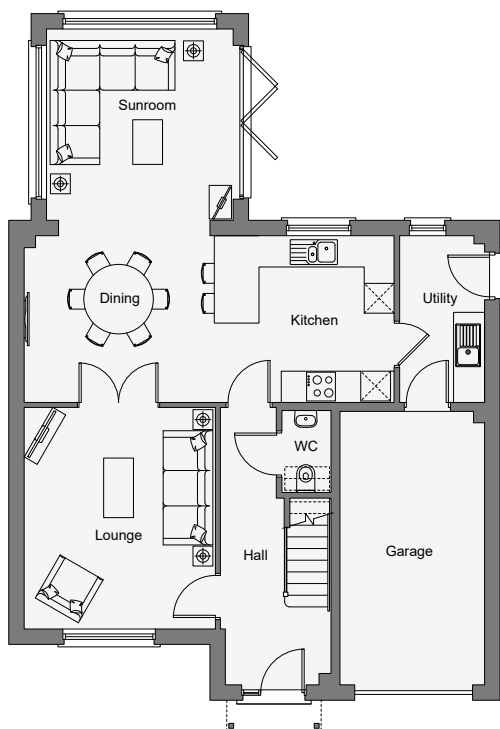


This Computer Generated Image is indicative only to give an impression of the house design, it is not plot specific.

The Beech 21 is a superb four bedroom detached home with an integral garage. On the ground floor, double doors lead from the lounge through to the stunning open-plan dining-kitchen and sunroom, with bi-fold doors to access the garden. There is also a separate utility room and downstairs WC.

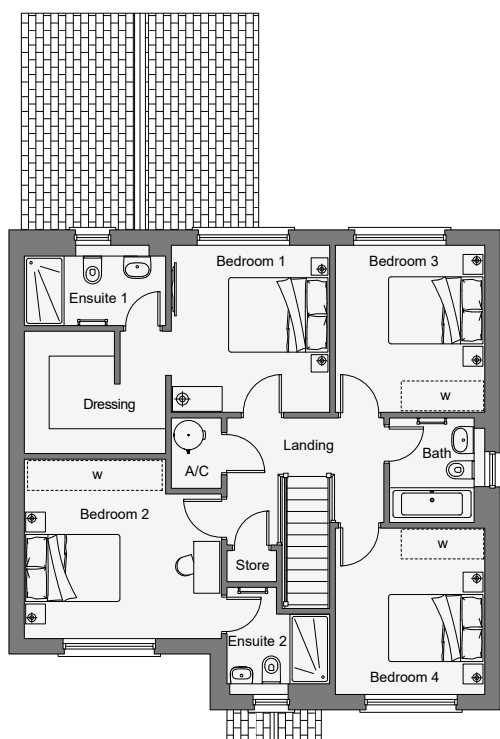
Upstairs bedroom one features a dressing area and an ensuite shower room. There are three further double bedrooms and bedroom two also benefits from its own ensuite. There is also a stylish family bathroom and storage and airing cupboards on the landing.





## GROUND FLOOR

Lounge	4.40m x 3.79m	14'5" x 12'5"
Kitchen / Dining	7.41m x 3.30m	24'4" x 10'10"
Sunroom	3.79m x 3.70m	12'5" x 12'2"
Utility	3.30m x 1.68m	10'10" x 5'6"
WC	1.66m x 0.96m	5'5" x 3'2"
Garage	5.49m x 2.89m	18'0" x 9'6"



## FIRST FLOOR

Bedroom 1	3.18m x 3.33m	10'5" x 10'11"
Dressing	2.81m x 2.46m	9'3" x 8'1"
Ensuite 1	2.81m x 1.59m	9'3" x 5'2" max
Bedroom 2	3.93m x 3.58m	12'11" x 11'9" max
Ensuite 2	2.07m x 2.12m	6'9" x 7'0" max
Bedroom 3	2.98m x 3.33m	9'9" x 10'11"
Bedroom 4	2.98m x 3.32m	9'9" x 10'11"
Bathroom	2.10m x 1.89m	6'11" x 6'2" max

W - suggested space for wardrobe

Floorplans shown for plots B111 & B112. Plots B137, B138 & B139 are handed.

# The Redwood

FOUR BEDROOM DETACHED HOME WITH GARAGE

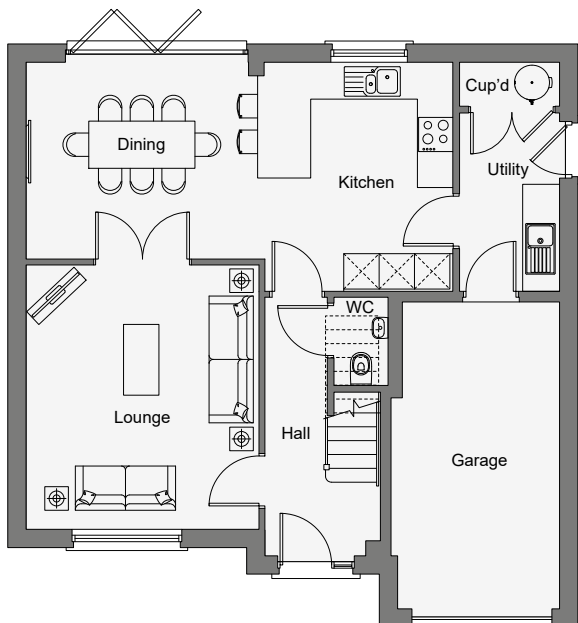


This Computer Generated Image is indicative only to give an impression of the house design, it is not plot specific.

The Redwood is a spacious four bedroom detached home with an integral garage. The ground floor features a lounge with double doors, leading to an open-plan kitchen-dining room, from which bi-fold doors provide access to the rear garden. There is also a separate utility room with a storage cupboard and a downstairs WC.

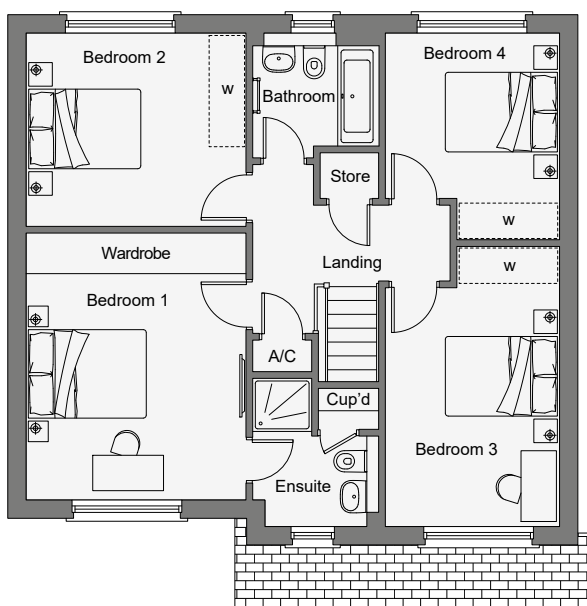
Upstairs bedroom one includes fitted wardrobes and an ensuite shower room. There are three further double bedrooms, a stylish family bathroom and additional storage.





## GROUND FLOOR

Lounge	4.42m x 3.89m	14'6" x 12'9"
Kitchen / Dining	7.20m x 3.83m	23'8" x 12'7" max
Utility	2.99m x 1.66m	9'10" x 5'5"
WC	1.46m x 0.91m	4'10" x 3'0"
Garage	5.19m x 2.84m	17'0" x 9'4" max
Optional Sunroom*		



## FIRST FLOOR

Bedroom 1	3.70m x 4.49m	12'2" x 14'9"
Ensuite	2.13m x 2.48m	7'0" x 8'2" max
Bedroom 2	3.70m x 3.25m	12'2" x 10'8"
Bedroom 3	4.72m x 2.92m	15'6" x 9'7" max
Bedroom 4	3.47m x 2.92m	11'5" x 9'7" max
Bathroom	2.13m x 1.89m	7'0" x 6'2"

W - suggested space for wardrobe

\*Optional sunroom subject to build stage. Floorplans shown for plots B113, B114, B128, B129 & B133.

# The Maple

FOUR BEDROOM DETACHED HOME WITH GARAGE

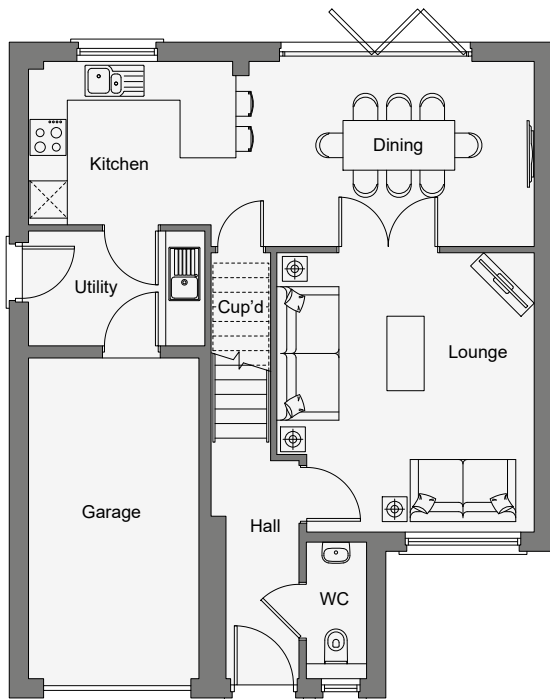


This Computer Generated Image is indicative only to give an impression of the house design, it is not plot specific.

This popular four bedroom detached home includes an integral garage. The ground floor features a lounge with double doors leading through to an open-plan kitchen-dining room, from which bi-fold doors provide access to the rear garden. There is also a separate utility room, a large storage cupboard and a downstairs WC.

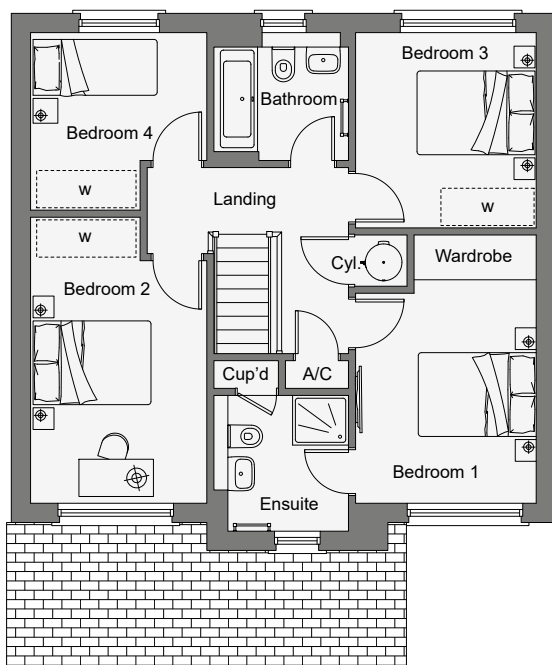
Upstairs bedroom one includes fitted wardrobes and an ensuite shower room.  
There are two further double bedrooms, a single bedroom and a stylish family bathroom.





## GROUND FLOOR

Lounge	4.09m x 4.44m	13'5" x 14'7"	max
Kitchen / Dining	8.09m x 2.92m	26'6" x 9'7"	max
Utility	2.78m x 1.79m	9'1" x 5'10"	
WC	2.17m x 0.94m	7'1" x 3'1"	
Garage	2.71m x 5.13m	8'11" x 16'10"	
Optional Sunroom*			



## FIRST FLOOR

Bedroom 1	2.88m x 4.29m	9'5" x 14'11"	max
Ensuite	2.16m x 2.16m	7'1" x 7'1"	max
Bedroom 2	2.81m x 4.58m	9'3" x 15'0"	max
Bedroom 3	2.88m x 3.11m	9'5" x 10'3"	
Bedroom 4	2.81m x 2.83m	9'3" x 9'3"	max
Bathroom	2.16m x 2.03m	7'1" x 6'8"	max

W - suggested space for wardrobe

\*Optional sunroom subject to build stage. Floorplans shown for plots B132 & B134. Plots B130, B131, B135 & B136 are handed.

# The Larch 3

THREE BEDROOM SEMI-DETACHED HOME

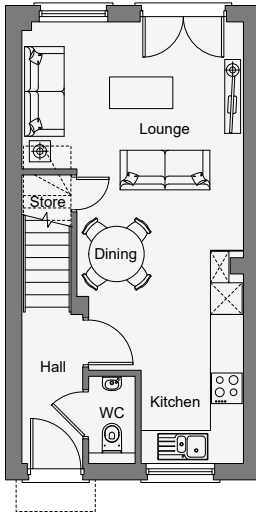


This Computer Generated Image is indicative only to give an impression of the house design, it is not plot specific.

With living accommodation over three floors, this modern family home is available with or without a garage.\* The open-plan living area is double aspect with French doors opening onto the patio and rear garden from the lounge. There is also a WC off the hall and an understairs cupboard.

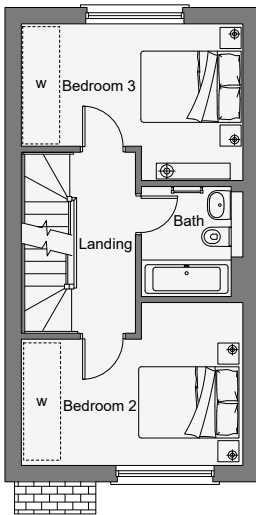
The first floor has two double bedrooms and a stylish family bathroom. On the second floor bedroom one includes fitted wardrobes and there is also a separate shower room and a large airing cupboard / store.





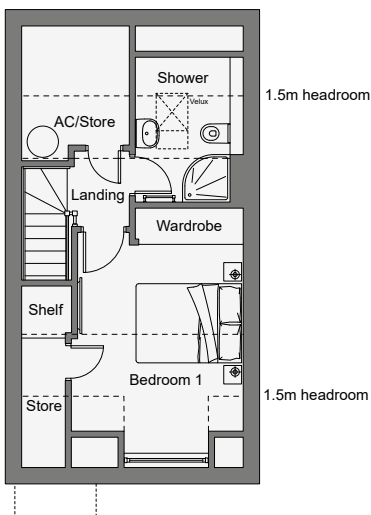
## GROUND FLOOR

Kitchen / Dining / Lounge	8.31m x 4.14m	27'3" x 13'7"	max
WC	1.62m x 0.87m	5'4" x 2'10"	



## FIRST FLOOR

Bedroom 2	4.14m x 3.06m	13'7" x 10'0"	max
Bedroom 3	4.14m x 2.94m	13'7" x 9'8"	max
Bathroom	2.08m x 1.89m	6'10" x 6'2"	max



## SECOND FLOOR

Bedroom 1	4.54m x 3.23m	14'11" x 10'7"	max
Shower Room	2.01m x 1.99m	6'7" x 6'7"	max

W - suggested space for wardrobe

\*Floorplans shown for plots B66, B68, B70, B72, B74, B76, B78, B80, B82, B84 & B86. Plots B67, B69, B71, B73, B75, B77, B79, B81, B83, B85 & B87 are handed. Floorplans differ for plots B60 & B61 which include a garage. Please ask your sales consultant for full details.



# HIGH QUALITY Specification

At Dandara, we believe the difference between simply building a house and creating a home is attention to detail. From the initial design stage, right through to the final finishing touches, quality is built-in as standard.



## SPECIFICATION DETAILS

### KITCHEN

Choice\* of high-quality fully fitted contemporary kitchen with stylish laminate worktops. Equipped with appliances including: stainless steel extractor hood, integrated single or double oven,\*\* ceramic hob, fridge freezer, dishwasher and a stainless steel 1 ½ bowl sink with chrome mixer tap.

### BATHROOMS

Quality white porcelain suite featuring a wall mounted basin, WC with concealed cistern, bath complete with bath screen, thermostatically controlled shower and polished chrome fittings. Heated towel rail. Choice\* of quality floor and wall tiles from a pre-selected range. Wall tiling to wet areas.

### ENSUITES

Quality white porcelain suite featuring a wall mounted basin, WC with concealed cistern, shower tray complete with shower screen, thermostatically controlled shower and polished chrome fittings. Heated towel rail. Choice\* of quality floor and wall tiles from a pre-selected range. Wall tiling to wet areas.

### WC

Quality white porcelain suite featuring a wall mounted basin, WC with concealed cistern and polished chrome fittings.

### INTERNAL FINISH & DECORATION

Contemporary internal doors fitted with attractive chrome handles. Walls and ceilings decorated with emulsion. All woodwork is finished in white gloss/satin finish.

### WARDROBES

Stylish fitted wardrobes included as standard in bedroom one.

### WINDOWS & DOORS

High performance entrance door with multi-point locking mechanism for added security. Low maintenance thermally efficient double glazed uPVC casement windows.

### HEATING & HOT WATER

An air source heat pump (ASHP) provides central heating via steel panelled radiators. Programmable thermostat in the lounge. The ASHP and a hot water storage cylinder provides hot water.

### ELECTRICAL

There is a generous provision of electrical points throughout your new home. Data points in the lounge and bedroom one. TV/satellite points in the lounge, dining area\*\* and bedroom one. White sockets and switches throughout.

### ENERGY EFFICIENCY

Photovoltaic panels are fitted to your new home, providing supplementary low-carbon-generated electricity, which help reduce your energy bills.

### LIGHTING

Recessed LED down lighting to hallway, kitchen, WC, bathrooms and ensuites. Pendant light fittings elsewhere. Under-cabinet lighting to wall units in kitchen.

### GARDENS & PATHS

Block paviour to driveway and parking areas. Concrete paving to patios and concrete paths. Front gardens are landscaped and turfed. Rear gardens are seeded or turfed and enclosed with wooden fencing.

\* Subject to build stage. \*\*Subject to house type.

# Why buy new?

‘Old vs new’ is a long-running debate. But with a Dandara home, you’ll find all the benefits of new beats an older home every time. Because then you can look forward to less maintenance and lower running costs, improved safety and security and not having the hassle of being in a chain. And don’t forget, you’ll have an entire blank canvas to put your own stamp on.

## EVERY NEW DANDARA HOME INCLUDES

A 10 year guarantee for your peace of mind, provided by a third party.



## INCLUDED AS STANDARD IN EVERY DANDARA HOME

All Dandara homes come complete with quality fitted kitchens and stylish contemporary bathrooms.



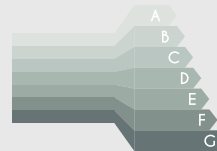
## THEY CAN HELP YOU SAVE MONEY

Your energy bills could be up to 50% cheaper than an older equivalent which means you could save you hundreds per year on your household bills.\*



## THEY CAN HELP THE ENVIRONMENT

86% of new build homes are rated A-B for energy efficiency, while under 5% of existing properties reached the same standard.\* The average new home generates 65% less carbon emissions than older properties of their type.\*



## IT'S LOWER MAINTENANCE

From higher building standards to improved energy efficiency, we invest in quality so you can enjoy lower maintenance living.



## IT'S BRAND NEW AND READY FOR YOU

From the day you move in, everything in your new Dandara home is bright and brand new - ready for you just to add your own personality and style.



\*According to HBF figures published January 2025.











# Customer Service

At Dandara we're committed to putting our customers first. From the first interaction with our sales team, to the day you move in, we're dedicated to providing the best possible service. But it doesn't end there, even after you've moved in, we will still be on hand to answer any questions you may have.

In fact, over 90% of our customers would recommend us to friends and family which has earned us 5 stars for customer service from the Home Builders Federation's annual New Homes Survey.

We will keep you updated with the progress of your property and invite you to visit and attend a home demonstration so our Customer Care team can explain how various aspects of your new home will work.

We will also ensure move in day runs as smoothly as possible and will provide you with a comprehensive information pack covering all aspects of your new home. Our Customer Care team will be in touch to see how you have settled in and answer any questions you may have. You can find out more in our Customer Charter which describes our commitment to our customers and outlines the warranties and guarantees we provide with every home we build. Please visit our website for further information.





DISCLAIMER: The information and images contained in this document are intended to convey the concept and vision for the 'Reayrt Mie' development. They are for guidance only, may alter as work progresses and do not necessarily represent a true and accurate depiction of the finished product. This brochure does not form part of any contract nor does it form any representation or warranty in relation to the Developer, its Employees, Agents or to the 'Reayrt Mie' development or any of their related developments. This brochure has been published before construction work has been finalised and is designed to be illustrative of the development. Whilst these particulars are believed to be correct, their accuracy cannot be guaranteed and during the course of construction there may be some variation to them. Purchasers are given notice that: 1. These particulars do not constitute any part of an offer or contract. 2. All statements made in these particulars are made without responsibility on the part of the agent or the developer. 3. None of the statements contained in these particulars are to be relied upon as a statement or representation of fact. 4. Any intended purchaser or tenant must satisfy him/herself by inspection or otherwise as to the correctness of each of the statements contained in these particulars. 5. The developer does not make or give, nor any person in their employment has any authority to make or give any representation or warranty whatever in relation to Dandara Limited or any part of it. 6. The selling agent does not make or give, nor any person in their employment has any authority to make or give any representation or warranty whatever in relation to Dandara Limited or any part of it. 7. All photography and computer generated images are indicative only. 8. Bathroom and kitchen layouts are indicative only. 9. Floorplans and dimensions are taken from architectural drawings and are for guidance only and are subject to change. Dimensions stated are within a tolerance of plus or minus 100mm. Please ask a sales consultant for specific plot details.