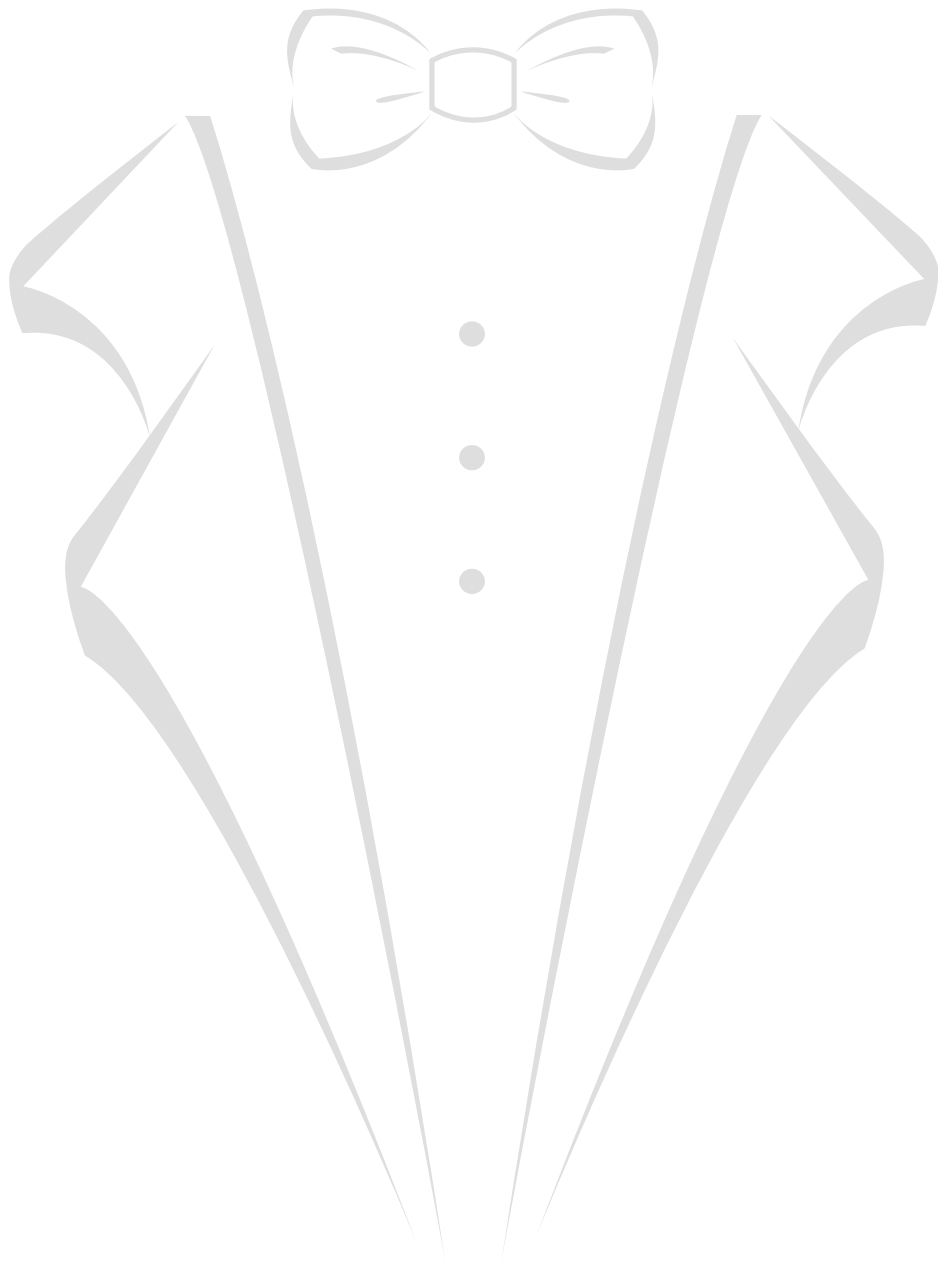


*Du Bois* **FORMALWEAR**  
*When it's got to be right!*

127 S Broadway | Green Bay, WI 54303 | Phone (800) 236-7303 | Fax (920) 239-8890 | Email [orders@duboisfw.com](mailto:orders@duboisfw.com)

[www.duboisformalwear.com](http://www.duboisformalwear.com)





# Du Bois FORMALWEAR

## Tuxedos and Suits

|                         |              |
|-------------------------|--------------|
| Black .....             | pages #8-13  |
| White .....             | page #14     |
| Gray .....              | pages #16-24 |
| Blue / Navy .....       | pages #26-31 |
| Burgundy / Brown .....  | page #32-33  |
| Cinnamon / Hunter ..... | pages #34-35 |
| Tan / Ivory .....       | pages #36-37 |
| Specialty .....         | pages #40-49 |

## Essentials

|               |              |
|---------------|--------------|
| Shirts .....  | pages #52-53 |
| Pants .....   | page #54     |
| Shoes .....   | page #55     |
| Jewelry ..... | page #55     |
| Belts .....   | page #55     |

## Accessories

### by Collection

|                                 |              |                                   |          |
|---------------------------------|--------------|-----------------------------------|----------|
| Portofino by Larr Brio .....    | pages #56-59 | Blossom Floral by Larr Brio ..... | page #65 |
| Satin by Malibu Tie, Inc. ....  | pages #60-61 | Camouflage by Mossy Oak .....     | page #66 |
| Tweed .....                     | page #62     | Destination by Santana .....      | page #66 |
| Colby by Larr Brio .....        | page #63     | Metallics by Larr Brio .....      | page #67 |
| Simply Solid by Larr Brio ..... | page #64     | Allure Dot by Larr Brio .....     | page #67 |

## Accessories

### by Color

|                                 |              |                                |              |
|---------------------------------|--------------|--------------------------------|--------------|
| Pink / Red / Burgundy .....     | pages #68-69 | Purple / Lapis .....           | pages #80-81 |
| Coral / Orange .....            | pages #70-71 | Magenta / Fuchsia / Plum ..... | pages #82-83 |
| Green / Olive .....             | pages #72-73 | White / Yellow / Gold .....    | pages #84-85 |
| Celadon / Clover / Hunter ..... | pages #74-75 | Ivory / Beige / Brown .....    | pages #86-87 |
| Turquoise / Aqua .....          | pages #76-77 | Gray / Pewter / Silver .....   | page #88     |
| Sky Blue / Royal Blue .....     | page #78     | Black .....                    | page #89     |
| Cornflower / Slate / Navy ..... | page #79     |                                |              |

# Tuxedo Index

| Style # | Description                 | Color                  | Price Category | Manf. #       | Buttons | Lapel | Vent | Pocket | Fit |
|---------|-----------------------------|------------------------|----------------|---------------|---------|-------|------|--------|-----|
| 111     | Couture 1910 Houston        | Steel Gray             | 4              | 6845C-08      | 2       | N     | S    | F      | S   |
| 123     | Allure Men Ridge            | Denim Blue             | 4              | RG100         | 2       | N     | S    | F      | S   |
| 125     | Ike Evening Archer          | Brown                  | 4              | 6545C-99      | 2       | N     | S    | F      | S   |
| 126     | MOD Lorenzo                 | Cinnamon               | 4              | JTT600SN      | 2       | N     | S    | F      | S   |
| 128     | Ike Behar Luka              | Hunter Green           | 4              | 8544C-29      | 2       | N     | S    | F      | S   |
| 133     | Ike Behar Lane              | Dusk Blue              | 3              | 8563C-35      | 1       | P     | S    | B      | S   |
| 143     | Ike Behar Blake             | Navy w/Black Lapel     | 3              | 8561C-30      | 1       | P     | S    | B      | S   |
| 144     | Larr Brio Metro             | Black                  | 4              | JTN301MB2     | 2       | N     | S    | B      | S   |
| 151     | Kenneth Cole Lenox          | Dusk Blue              | 3              | 9828C-02      | 2       | N     | S    | B      | S   |
| 153     | Ike Behar Sebastian         | Navy                   | 3              | 8560C-37      | 2       | N     | S    | B      | S   |
| 161     | Ike Behar Xavier            | Charcoal Gray          | 3              | 8561C-08      | 1       | P     | S    | B      | S   |
| 171     | Ike Behar Grayson           | Medium Gray            | 3              | 8564C-03      | 2       | N     | S    | B      | S   |
| 186     | Ike Behar Marbella          | Burgundy w/Black Lapel | 3              | 8561C-45      | 1       | P     | S    | B      | S   |
| 191     | Jean Yves Twilight          | Steel Gray             | 2              | 10098         | 2       | N     | S    | B      | M   |
| 232     | Ike Behar Waverly           | Black                  | 3              | 8261C-01      | 1       | S     | V    | B      | S   |
| 243     | Ike Behar Collin            | Navy                   | 3              | 8545C-37      | 2       | N     | S    | B      | S   |
| 252     | Traditional Notch           | Black                  | 1              | 848           | 1       | N     | S    | B      | M   |
| 262     | Ike Behar Ashton            | Black                  | 3              | 6368IB-R      | 1       | P     | S    | B      | S   |
| 280     | Ike Behar Aragon            | White                  | 4              | 8545C-70      | 2       | N     | S    | F      | S   |
| 291     | Jean Yves Allure Men        | Steel Gray             | 2              | 10257         | 2       | N     | S    | F      | M   |
| 333     | David Major - Stretch       | French Blue            | 4              | G47815-17Trim | 2       | N     | S    | F      | S   |
| 351     | David Major - Stretch       | Light Gray             | 4              | G45001-1Trim  | 2       | N     | S    | F      | S   |
| 352     | David Major - Stretch       | Black                  | 4              | G47815-1Trim  | 2       | N     | S    | F      | S   |
| 355     | David Major - Stretch       | Tan                    | 4              | G47815-4ATrim | 2       | N     | S    | F      | S   |
| 391     | Jean Yves Ceremonia         | Steel Gray             | 2              | 10150         | 2       | N     | N    | B      | M   |
| 407     | Lord West Traditional Notch | Ivory                  | 1              | 4702          | 2       | N     | N    | B      | C   |
| 512     | FCG Cutaway                 | Black                  | 1              | 8015C         | 1       | P     | V    | -      | C   |
| 521     | Lord West Cutaway           | Charcoal               | 1              | 8015C         | 1       | P     | V    | -      | C   |
| 951     | MOD Starlight Lame'         | Silver                 | 4              | JSTAR5S-M94   | 1       | S     | S    | B      | S   |
| 952     | MOD Equinox                 | Black Velvet           | 4              | JDVEL2ES-J01  | 1       | S     | S    | B      | S   |
| 953     | MOD Starlight Lame'         | Royal Blue             | 4              | JSTAR5S-J04   | 1       | S     | S    | B      | S   |
| 954     | Allure Men Venice           | Dusty Rose Velvet      | 4              | AM154         | 1       | S     | S    | F      | S   |
| 956     | Ike Evening Carter          | Red                    | 4              | N/A           | 1       | P     | S    | B      | S   |
| 957     | Allure Men Venice           | Aubergine Velvet       | 4              | AM154         | 1       | S     | S    | F      | S   |
| 959     | MOD Metallic Camo           | Black & Gold           | 4              | JCAMO45-J60   | 1       | S     | S    | B      | S   |
| 961     | MOD Starlight Lame'         | Stone                  | 4              | JSTAR5S-J59   | 1       | S     | S    | B      | S   |
| 963     | MOD Hendrix                 | Abstract Multi-Color   | 4              | JHEN13N       | 2       | N     | S    | F      | S   |
| 969     | MOD Ryan                    | Floral Multi-Color     | 4              | N/A           | 2       | N     | S    | F      | S   |

|               |                 |               |                       |
|---------------|-----------------|---------------|-----------------------|
| <b>LAPELS</b> | <b>VENT</b>     | <b>POCKET</b> | <b>FIT</b>            |
| N - Notch     | V - Vented      | B - Besom     | S - Slim              |
| S - Shawl     | N - Non-vented  | F - Flap      | M - Modern Essentials |
| P - Peak      | S - Side Vented |               | C - Contemporary      |

# Accessories Index

| Collection            | Manufacturer     | # of Colors | Vest Buttons | Vest | Windsor Tie | Bow Tie | Pocket Square |
|-----------------------|------------------|-------------|--------------|------|-------------|---------|---------------|
| Portofino             | Larr Brio        | 58          | 5            | x    | x           | x       | x             |
| Satin                 | Malibu Tie, Inc. | 48          | 6            | x    | x           | x       | x             |
| Tweed                 | Suits America    | 3           | 4            | x    | x           | x       | x             |
| Colby                 | Larr Brio        | 20          | n/a          | n/a  | x           | x       | x             |
| Simply Solid (Stripe) | Larr Brio        | 18          | n/a          | n/a  | x           | n/a     | x             |
| Simply Solid (Neon)   | Larr Brio        | 2           | 4            | x    | x           | x       | x             |
| Allure Dot            | Larr Brio        | 10          | n/a          | n/a  | x           | x       | x             |
| Blossom Floral        | Larr Brio        | 24          | n/a          | n/a  | x           | x       | x             |
| Camouflage            | Mossy Oak        | 2           | 5            | x    | x           | x       | x             |
| Metallics             | Larr Brio        | 2           | 4            | x    | x           | x       | x             |
| Destination           | Santana          | 3           | 5            | x    | x           | x       | x             |



# Tuxedo Index

Arranged by Color and Style Number

## BLACK



#144 page #9



#232 page #11



#252 page #12



#262 page #10



#352 page #8



#512 page #13



#280 page #14



#111 page #16

## WHITE

## GRAY

## GRAY



#151 page #18



#161 page #19



#171 page #20



#191 page #22



#291 page #21



#351 page #17



#391 page #23



#521 page #24

## NAVY / BLUE

## BURGUNDY

## BROWN



#123 page #26



#133 page #28



#143 page #31



#153 page #27



#243 page #30



#333 page #29



#186 page #32



#125 page #33

## CINNAMON

## GREEN

## SPECIALTY



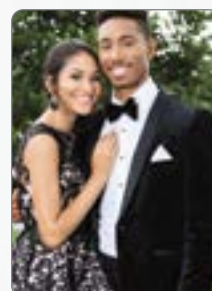
#126 page #34



#128 page #35



#951 page #43



#952 page #40



#953 page #41



#954 page #45



#956 page #46

## TAN

## IVORY



#355 page #36



#407 page #37



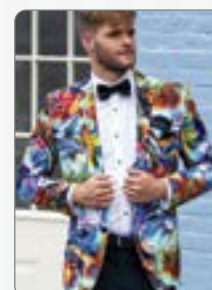
#957 page #44



#959 page #48



#961 page #42



#963 page #47



#969 page #49

# Tuxedo Fit Guide

## **S** SLIM FIT

### Details:

- Slim lapel
- Higher armhole
- Narrow sleeve
- Tapered body
- Shorter length
- Usually paired with slim fit pant

### Coat styles with this fit:

|                             |                            |
|-----------------------------|----------------------------|
| 111 - 1910 Couture Houston  | 280 - FCG Aragon           |
| 133 - Ike Behar Lane        | 951 - MOD Starlight Lame'  |
| 143 - Ike Behar Blake Navy  | 952 - MOD Equinox          |
| 151 - Kenneth Cole Lenox    | 953 - MOD Starlight Lame'  |
| 153 - Ike Behar Sebastian   | 954 - Allure Men Venice    |
| 161 - Ike Behar Xavier      | 956 - Ike Evening Carter   |
| 171 - Ike Behar Grayson     | 957 - Allure Men Venice    |
| 186 - Ike Behar Marbella    | 959 - MOD Metallic Camo    |
| 232 - Ike Behar Waverly     | 963 - MOD Hendrix Abstract |
| 243 - Ike Behar Collin Navy | 969 - MOD Ryan Floral      |
| 262 - Ike Behar Ashton      |                            |

### Coat styles with stretch material:

|                               |
|-------------------------------|
| 123 - Allure Men Ridge        |
| 125 - Ike Evening Archer      |
| 126 - MOD Lorenzo             |
| 128 - Ike Behar Luka          |
| 144 - Larr Brio Metro         |
| 333 - David Major French Blue |
| 351 - David Major Light Gray  |
| 352 - David Major Black       |
| 355 - David Major Tan         |

## **M** MODERN FIT

### Details:

- Softer shoulder
- Narrowed lapel
- Smaller top collar
- Trimmed down waist
- Non-vented back
- Shorter Length
- Usually paired with flat front pant

### Coat styles with this fit:

|                              |
|------------------------------|
| 191 - Jean Yves Twilight     |
| 252 - Traditional Notch      |
| 291 - Jean Yves Allure Gray  |
| 292 - Jean Yves Allure Black |
| 391 - Jean Yves Gray Suit    |

## **C** CONTEMPORARY FIT

### Details:

- Designed for comfort
- Shoulders are wider
- Larger armholes
- Sleeves are fuller
- Paired with flat front or pleated pant

### Coat styles with this fit:

|                                   |
|-----------------------------------|
| 407 - Lord West Traditional Ivory |
| 512 - Lord West Cutaway Black     |
| 521 - Chaps, Ralph Lauren Cutaway |



# Black



#352 David Major | Suit  
page #8



#144 MOD | Metro  
page #9



#262 Ike Behar | Ashton  
page #10



#232 Ike Behar | Waverly  
page #11



#252 Traditional Notch  
page #12



#512 Lord West | Cutaway  
page #13

# White



#280 Ike Behar | Aragon  
page #14

David Major

# Stretch Slim Suit

#352

**David Major | Suit**

Black Stretch Material  
Self Faced Notch Lapel  
Slim Fit  
2 Button Front  
Vented

**Shown with:**

Pants #352 - Slim Fit Stretch, Flat Front  
Shirt #WLF - White Laydown Collar, Fitted  
or Shirt #410 - White Laydown Collar, Reg. Fit  
Vest #V352 - Black 4 Button Suit  
Tie #F500 - White Satin Windsor  
Pocket Square #H500 - White Satin



Belt: Black



*David Major*  
— SELECT —



MOD

*Metra*

**#144**

**MOD | Metro**

Slim Fit Stretch Material  
Satin Notch Lapel  
Slim Fit  
2 Button Front  
Vented

**Shown with:**

Pants #144 - Slim Fit Stretch, Flat Front, No Side Stripe  
Shirt #WLF - White Laydown Collar, Fitted  
or Shirt #410 - White Laydown Collar, Reg. Fit  
Vest #V144 - Black 4 Button  
Tie #B502 - Black Satin Bow  
Pocket Square #H500 - White Satin



(800) 236-7303





Ike Behar

*Ashton*

**#262**

**Ike Behar | Ashton**

Black Light Weight Wool

Satin Edge Peak Lapel

Slim Fit

1 Button Front

Vented

Stretch Armholes

**Shown with:**

Pants #144 - Slim Fit Stretch, Flat Front No Side Stripe

Shirt #WLF - White Laydown Collar, Fitted

or Shirt #410 - White Laydown Collar, Reg. Fit

Vest #V244 - Black Ike Behar

Tie #B502 - Black Satin Bow

Pocket Square #H500 - White Satin

**Also Available:**

Pants #244 - Slim Fit, Flat Front, Side Stripe

**IKE EVENING**  
BY IKE BEHAR



Luxury  
Super 120's  
Wool

Ike Behar

*Waverly*

#232

**Ike Behar | Waverly**

Black Light Weight Wool  
Luxury Super 120's Wool  
Satin Edge Shawl Lapel  
Slim Fit  
1 Button Front  
Vented  
Stretch Armholes

**Shown with:**

Pants #144 - Slim Fit Stretch, Flat Front No Side Stripe  
Shirt #WLF - White Laydown Collar, Fitted  
or Shirt #410 - White Laydown Collar, Reg. Fit  
Vest #V244 - Black Ike Behar (not shown)  
Tie #B502 - Black Satin Bow  
Pocket Square #H500 - White Satin

**Also Available:**

Pants #244 - Slim Fit, Flat Front, Side Stripe

**IKE EVENING**  
BY IKE BEHAR

(800) 236-7303



**S** SLIM  
FIT

International Clothing

*Traditional*

**#252**

**Int. Clothing | Traditional Black Notch**

Black  
Modern Fit  
Satin Notch Lapel  
1 Button  
Side Vents

**Shown with:**

Pants #144 - Slim Fit Stretch, Flat Front, No Side Stripe  
Shirt #414 - Ivory Laydown Collar, Reg. Fit  
Vest #V502 - Black Satin  
Tie #F509 - Ivory Satin Windsor  
Pocket Square #H509 - Ivory Satin

**Also Available:**

Pants #244 - Slim Fit, Flat Front, Side Stripe



**MODERN  
FIT**



Lord West

*Cutaway*

**#512**

**Lord West | Cutaway**

Black Cutaway  
Contemporary Fit  
Self Peak Lapel  
1 Button Front  
Vented

**Shown with:**

Pants #121 - Gray Stripe, Classic Fit, Two Pleats,  
No Side Stripe  
Shirt #310 - White Wingtip Collar, Microfiber  
Vest and Tie - Not Available



**CONTEMPORARY  
FIT**



Ike Behar

# Aragon

#280

Ike Behar | Aragon Suit

White  
Self Faced Notch Lapel  
Slim Fit  
2 Button Front  
Vented

**Shown with:**

Pants #280 - Slim Fit, Flat Front Suit  
Shirt #WLF - White Laydown Collar, Fitted  
or Shirt #410 - White Laydown Collar, Reg. Fit  
Vest #V280 - White 4 Button Suit  
Tie #F280 - White Matte Windsor  
Pocket Square #H280 - White Matte



Belts: White, Cognac, Brown



IKE EVENING  
BY IKE BEHAR





**#111 Couture 1910 | Suit**  
page #16



**#351 David Major | Suit**  
page #17



**#151 Kenneth Cole | Lenox**  
page #18



**#161 Ike Behar | Xavier**  
page #19



**#171 Ike Behar | Grayson**  
page #20



**#291 Jean Yves | Allure**  
page #21



**#191 Jean Yves | Twilight**  
page #22



**#391 Jean Yves | Ceremonia**  
page #23



**#521 Lord West | Cutaway**  
page #24

## Couture 1910

# Houston

### #111

#### Couture 1910 | Houston

Steel Gray  
Slim Fit  
Self Faced Notch Lapel  
2 Button Front  
Side Vents

#### Shown with:

Pants #111 - Slim Fit, Flat Front, No Side Stripe  
Shirt #WLF - White Laydown Collar, Slim Fit  
or Shirt #410 - White Laydown Collar, Reg. Fit  
Vest #V111 - Steel Gray Satin (Not Shown)  
Tie #F500 - White Satin Windsor  
Pocket Square #H500 - White Satin

#### Also Available:

Tie #F111 - Steel Gray Windsor  
Tie #B111 - Steel Gray Bow  
Pocket Square #H111 - Steel Gray Satin





David Major

# Stretch Slim Suit

**#351**

**David Major | Suit**

Light Gray Stretch Material  
Self Faced Notch Lapel  
Slim Fit  
2 Button Front  
Vented

**Shown with:**

Pants #351 - Slim Fit, Flat Front Suit Pant  
Shirt #WLF - White Laydown Collar, Fitted  
or Shirt #410 - White Laydown Collar, Reg. Fit  
Vest #V351 - Light Gray Suit  
Tie #F531 - Victorian Pewter Satin Windsor  
Pocket Square #H531 - Victorian Pewter Satin

**Also Available:**

Tie #B351 - Light Gray Matte Bow  
Tie #F351 - Light Gray Windsor  
Pocket Square #H351 - Light Gray



Belts: Cognac, Brown, Black



## Kenneth Cole

### *Lenox*

#### #151

#### Kenneth Cole | Lenox

Heather Gray

Slim Fit

Self Faced Notch Lapel with Satin Trim

2 Button Front

Vented

#### Shown with:

Pants #151 - Slim Fit, Flat Front, No Side Stripe

Shirt #WLF - White Laydown Collar, Slim Fit

or Shirt #410 - White Laydown Collar, Reg. Fit

Vest #V151 - Heather Gray Satin (Not Shown)

Tie #B151 - Heather Gray Satin Bow

Pocket Square #H500 - White Satin

#### Also Available:

Tie #F151 - Heather Gray Windsor

Pocket Square #H151 - Heather Gray Satin

# KENNETH COLE



SLIM  
FIT



Luxury  
Super 120's  
Wool

*Du Bois* FORMALWEAR

Ike Behar

*Xavier*

**#161**

**Ike Behar | Xavier**

Charcoal Gray Light Weight Wool  
Luxury Super 120's Wool  
Slim Fit  
Peak Lapel  
1 Button Front  
Side Vent

**Shown with:**

Pants #161 - Slim Fit, Flat Front, No Side Stripe  
Shirt #WLF - White Laydown Collar, Slim Fit  
or Shirt #410 - White Laydown Collar, Reg. Fit  
Vest #V161 - Charcoal Gray Ike Behar  
Tie #B502 - Black Satin Bow  
Pocket Square #H500 - White Satin

**IKE EVENING**  
BY IKE BEHAR



**S** SLIM  
FIT

(800) 236-7303



Luxury  
Super 120's  
Wool

Ike Behar

*Grayson*

**#171**

**Ike Behar | Grayson**

Medium Gray Light Weight Wool

Luxury Super 120's Wool

Slim Fit

Satin Inset Notch Lapel

2 Button Front

Side Vent

**Shown with:**

Pants #171 - Slim Fit, Flat Front, No Side Stripe

Shirt #WLF - White Laydown Collar, Slim Fit

or Shirt #410 - White Laydown Collar, Reg. Fit

Vest #V171 - Medium Gray Ike Behar

Tie #B171 - Medium Gray Satin Bow

Pocket Square #H500 - White Satin

**Also Available:**

Tie #F171 - Medium Gray Windsor

Pocket Square #H171 - Medium Gray Satin

**IKE EVENING**  
BY IKE BEHAR



**SLIM  
FIT**



Jean Yves

*Allure*

**#291**

**Jean Yves | Allure Men**

Steel Gray  
Modern Fit  
Satin Edge Notch Lapel  
2 Button Front  
Side Vent

**Shown with:**

Pants #191 - Modern Fit, Flat Front  
Shirt #WLF - White Laydown Collar, Fitted  
or Shirt #410 - White Laydown Collar, Reg. Fit  
Vest #M191 - Gray Allure Satin Trim  
Tie #F821 - Silver Dot Vertical Windsor  
Pocket Square #H821 - Silver Dot Vertical

**Also Available:**

Tie #F191 - Steel Gray Satin Windsor  
Pocket Square #H191 - Steel Gray Satin

ALLURE MEN  
BY JEAN YVES

(800) 236-7303



**MODERN  
FIT**



Jean Yves

*Twilight*

**#191**

**Jean Yves | Twilight**

Steel Gray  
Modern Fit  
Satin Inset Notch Lapel  
2 Button Front  
Side Vent

**Shown with:**

Pants #191 - Modern Fit, Flat Front  
Shirt #310 - White Wingtip Microfiber  
Vest #M191 - Gray Allure Satin Trim  
Tie #T401- Platinum Ombre Windsor  
Pocket Square #HT01 - Platinum Ombre

**Also Available:**

Tie #F191 - Steel Gray Satin Windsor  
Pocket Square #H191 - Steel Gray Satin



**MODERN  
FIT**

*Jean Yves*

Jean Yves

*Ceremonia*

**#391**

**Jean Yves | Ceremonia Suit**

Steel Gray  
Modern Fit  
Self Notch Lapel  
2 Button Front  
Non-Vented

**Shown with:**

Pants #191 - Modern Fit, Flat Front  
Shirt #WLF - White Laydown Collar, Fitted  
or Shirt #410 - White Laydown Collar, Reg. Fit  
Vest #M191 - Gray Allure Satin Trim  
Tie #F301 - Mercury Simply Solid Windsor  
Pocket Square #H301 - Mercury Simply Solid

**Also Available:**

Tie #F191 - Steel Gray Satin Windsor  
Pocket Square #H191 - Steel Gray Satin

*Jean Yves*

(800) 236-7303



**MODERN  
FIT**





*Du Bois* FORMALWEAR

Chaps, Ralph Lauren

*Somerset*

**#521**

**Chaps, Ralph Lauren | Somerset**

Charcoal Gray

Cutaway

Contemporary Fit

Self Peak Lapel

1 Button Front

Vented

**Shown with:**

Pants #121 - Gray Stripe, Classic Fit, Two Pleats,  
No Side Stripe

Shirt #310 - White Wingtip Microfiber

Vest and Tie - Not Available

**CHAPS**  
RALPH LAUREN



**CONTEMPORARY  
FIT**



# Colors



**DENIM BLUE**  
#123 Allure Men | Ridge  
page #26



**NAVY BLUE**  
#153 Ike Behar | Sebastian  
page #27



**DUSK BLUE**  
#133 Ike Behar | Lane  
page #28



**FRENCH BLUE**  
#333 David Major | Suit  
page #29



**NAVY BLUE**  
#243 Ike Behar | Collin  
page #30



**NAVY BLUE**  
#143 Ike Behar | Blake  
page #31



**BURGUNDY**  
#186 Ike Behar | Marbella  
page #32



**BROWN**  
#125 Ike Evening | Archer  
page #33



**CINNAMON**  
#126 MOD | Lorenzo  
page #34



**HUNTER GREEN**  
#128 Ike Behar | Luka  
page #35



**TAN**  
#355 David Major | Suit  
page #36



**IVORY**  
#407 Lord West | Traditional  
page #37



## Allure Men

# Ridge

#123

### Allure Men | Ridge

Denim Blue Stretch Material  
Slim Fit Coat  
Self Faced Framed Notch Lapel  
2 Button Front  
Vented

#### Shown with:

Pants #123 - Slim Fit, Flat Front, No Side Stripe  
Shirt #WLF - White Laydown Collar, Slim Fit  
or Shirt #410 - White Laydown Collar, Reg. Fit  
Vest #V123 - Allure Men Denim Blue  
Tie #B123 - Denim Blue Bow  
Pocket Square #H123 - Denim Blue

#### Also Available:

Tie #F123 - Denim Blue Windsor



Belts: Cognac, Brown



ALLURE MEN  
BY JEAN YVES



Ike Behar

# Sebastian

**#153**

**Ike Behar | Sebastian**

Navy Blue  
Slim Fit Coat  
Satin Faced Notch Lapel  
2 Button Front  
Vented

**Shown with:**

Pants #243 - Slim Fit, Flat Front, No Side Stripe  
Shirt #WLF - White Laydown Collar, Slim Fit  
or Shirt #410 - White Laydown Collar, Reg. Fit  
Vest #V243 - Navy Ike Behar  
Tie #B243 - Navy Satin Bow  
Pocket Square #H500 - White Satin

**Also Available:**

Tie #F243 - Navy Satin Windsor  
Pocket Square #H243 - Navy Satin



**IKE EVENING**  
BY IKE BEHAR

(800) 236-7303

Ike Behar

*Lane*

**#133**

**Ike Behar | Lane**

Dusk Blue

Self Faced Peak Lapel with Satin Trim

Slim Fit

1 Button Front

Vented

**Shown with:**

Pants #133 - Slim Fit, Flat Front, No Side Stripe

Shirt #WLF - White Laydown Collar, Slim Fit

or Shirt #410 - White Laydown Collar, Reg. Fit

Vest #V133 - Dusk Blue

Tie #B133 - Dusk Blue Satin Bow

Pocket Square #H500 - White Satin

**Also Available:**

Tie #F133 - Dusk Blue Satin Windsor

Pocket Square #H133 - Dusk Blue Satin



**IKE EVENING**  
BY IKE BEHAR





David Major

# Stretch Slim Suit

#333

**David Major | Suit**

French Blue Stretch Material  
Self Faced Notch Lapel  
Slim Fit  
2 Button Front  
Vented

**Shown with:**

Pants #333 - Slim Fit, Flat Front Suit Pant  
Shirt #WLF - White Laydown Collar, Fitted  
or Shirt #410 - White Laydown Collar, Reg. Fit  
Vest #V333 - French Blue Suit  
Tie #F504 - Paradise Pink Satin Windsor  
Pocket Square #H504 - Paradise Pink Satin  
Shoes #BRMT - Brown Matte

**Also Available:**

Tie #F333 - French Blue Matte Windsor  
Tie #B333 - French Blue Matte Bow  
Pocket Square #H333 - French Blue Matte



Belts: Cognac, Brown, Black

*David Major*  
— SELECT —



**S** SLIM FIT

(800) 236-7303

Luxury  
Super 120's  
Wool

## Ike Behar

# Collin

### #243

#### Ike Behar | Suit

Navy Blue Light Weight Wool  
Luxury Super 120's Wool  
Slim Fit  
Self Notch Lapel  
2 Button Front  
Vented

#### Shown with:

Pants #243 - Slim Fit, Flat Front, No Side Stripe  
Shirt #WLF - White Laydown Collar, Slim Fit  
or Shirt #410 - White Laydown Collar, Reg. Fit  
Vest #V243 - Navy Ike Behar  
Tie #F243 - Navy Satin Windsor  
Pocket Square #H500 - White Satin

#### Also Available:

Tie #B243 - Navy Satin Bow  
Pocket Square #H243 - Navy Satin







Luxury  
Super 120's  
Wool

*Du Bois* FORMALWEAR

Ike Behar

*Blake*

**#143**

**Ike Behar | Blake**

Navy Blue Light Weight Wool  
Black Satin Lapel, Trim and Buttons  
Luxury Super 120's Wool  
Slim Fit  
Black Satin Peak Lapel  
1 Button Front  
Vented

**Shown with:**

Pants #243 - Slim Fit, Flat Front, No Side Stripe  
Shirt #WLF - White Laydown Collar, Slim Fit  
or Shirt #410 - White Laydown Collar, Reg. Fit  
Vest #V243 - Navy Ike Behar  
Tie #B502 - Black Satin Bow  
Pocket Square #H500 - White Satin

**Also Available:**

Pants #244 - Slim Fit, Flat Front, Side Stripe  
Tie #F243 - Navy Satin Windsor  
Tie #B243 - Navy Satin Bow  
Pocket Square #H243 - Navy Satin



**SLIM  
FIT**

**IKE EVENING**  
BY IKE BEHAR

(800) 236-7303



Luxury  
Super 120's  
Wool

*Du Bois* FORMALWEAR

Ike Behar

# Marbella

#186

**Ike Behar | Marbella**

Burgundy Light Weight Wool  
Black Satin Lapel, Trim and Buttons  
Luxury Super 120's Wool  
Slim Fit  
Peak Lapel  
1 Button Front  
Vented  
Flat Front Pant, Side Stripe

**Shown with:**

Pants #144 - Slim Fit, Flat Front, No Side Stripe  
Shirt #WLF - White Laydown Collar, Slim Fit  
or Shirt #410 - White Laydown Collar, Reg. Fit  
Vest #V186 - Burgundy Ike Behar  
Tie #B502 - Black Satin Bow  
Pocket Square #H500 - White Satin

**Also Available:**

Pants #186 - Burgundy Flat Front Slim Fit Pant



SLIM  
FIT

**IKE EVENING**  
BY IKE BEHAR



## Ike Evening

# Archer

#125

Ike Evening | Archer

Brown  
Self Faced Notch Lapel  
2 Button Front  
Vented

**Shown with:**

Pants #125 - Slim Fit, Flat Front Suit Pant  
Shirt #WLF - White Laydown Collar, Fitted  
or Shirt #410 - White Laydown Collar, Reg. Fit  
Vest #V125 - Brown Archer  
Tie #F509 - Ivory Satin Windsor  
Pocket Square #H509 - Ivory Satin  
Shoes #CGMT - Cognac Matte

**Also Available:**

Tie #B125 - Brown Archer Bow  
Pocket Square #H125 - Brown Archer



Belts: Cognac, Brown



**IKE EVENING**  
BY IKE BEHAR



MOD

Lorenza

#126

MOD | Lorenzo

Cinnamon Stretch Material  
Self Faced Notch Lapel  
Slim Fit  
2 Button Front  
Vented

**Shown with:**

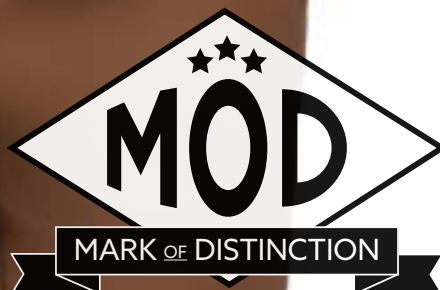
Pants #126 - Slim Fit, Flat Front, No Side Stripe  
Shirt #WLF - White Laydown Collar, Slim Fit  
or Shirt #410 - White Laydown Collar, Reg. Fit  
Vest #V126 - Cinnamon Lorenzo  
Tie #F509 - Ivory Satin Windsor  
Pocket Square #H509 - Ivory Satin

**Also Available:**

Tie #B126 - Cinnamon Matte Bow  
Tie #F126 - Cinnamon Matte Windsor  
Pocket Square #H126 - Cinnamon Matte



Belts: Cognac, Brown





## Ike Evening

# Luka

### #128

#### Ike Evening | Luka

Hunter Green Stretch Material  
Self Faced Notch Lapel  
Slim Fit  
2 Button Front  
Vented

#### Shown with:

Pants #128 - Slim Fit, Flat Front Suit Pant  
Shirt #WLF - White Laydown Collar, Fitted  
or Shirt #410 - White Laydown Collar, Reg. Fit  
Vest #V128 - Green Luka  
Tie #F509 - Ivory Satin Windsor  
Pocket Square #H509 - Ivory Satin

#### Also Available:

Tie #B128 - Green Matte Bow  
Tie #F128 - Green Matte Windsor  
Pocket Square #H128 - Green Matte



Belts: Cognac, Brown, Black



**IKE EVENING**  
BY IKE BEHAR

(800) 236-7303



David Major

# Stretch Slim Suit

#355

**David Major | Suit**

Tan Stretch Material  
Self Faced Notch Lapel  
2 Button Front  
Vented

**Shown with:**

Pants #355 - Slim Fit, Flat Front Suit Pant  
Shirt #WLF - White Laydown Collar, Fitted  
or Shirt #410 - White Laydown Collar, Reg. Fit  
Vest #V355 - Tan Matte  
Tie #B355 - Tan Matte Bow  
Pocket Square #H355 - Tan Matte

**Also Available:**

Tie #F355 - Tan Matte Windsor



Belts: Cognac, Brown



*David Major*  
— SELECT —



Lord West

*Traditional*

**#407**

**Lord West | Traditional Ivory Notch**

Ivory  
Contemporary Fit  
Satin Notch Lapel  
2 Button Front  
Non-Vented

**Shown with:**

Pants #407 - Ivory Flat Front, Beaded Side Stripe  
Shirt #314 - Ivory Wingtip Microfiber  
Vest #V509 - Ivory Satin  
Tie #B509- Ivory Satin Bow  
Pocket Square #H509 - Ivory Satin



**CONTEMPORARY  
FIT**





PHOTOS BY:  
KLEM STUDIO PHOTOGRAPHY  
@klemstudiosphotography





#952 MOD | Equinox Velvet  
page #40



#953 MOD | Starlight Lame' Royal  
page #41



#961 MOD | Starlight Lame' Stone  
page #42



#951 MOD | Silver  
page #43



#957 Allure Men | Venice Aubergine  
page #44



#954 Allure Men | Venice Dusty Rose  
page #45



#956 Ike Behar | Carter Red  
page #46



#963 MOD | Hendrix Abstract Multi  
page #47



#959 MOD | Camo Lame' Gold/Black  
page #48



#969 MOD | Ryan Floral Multi  
page #49



MOD

Equinox

#952

MOD | Equinox

Black Embossed Paisley Velvet  
Slim Fit  
Satin Shawl Lapel  
1 Button Front  
Vented

Shown with:

Pants #352 - Black Slim Fit Stretch, Flat Front  
Shirt #WLF - White Laydown Collar, Fitted  
or Shirt #410 - White Laydown Collar, Reg. Fit  
Tie #B502 - Black Satin Bow  
Pocket Square #H500 - White Satin

Also Available:

Vest #V952 - 4 Button Black Solid Velvet  
Tie #B952 - Black Solid Velvet Bow

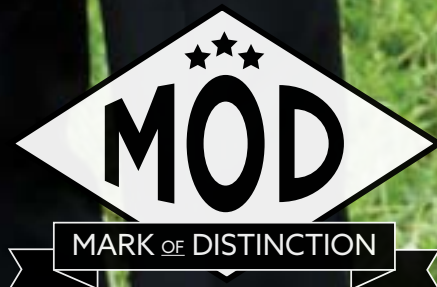
Men's Sizes Only (Even Sizes)

|         |         |
|---------|---------|
| Short   | 34 - 48 |
| Regular | 34 - 54 |
| Long    | 36 - 54 |
| X-Long  | 38 - 42 |

Boy's sizes not available



Belt: Black





MOD

# Starlight

#953

**MOD | Starlight Lame'**

Royal Blue Lame' Tuxedo  
Black Satin Shawl Lapel  
Slim Fit  
1 Button Front  
Vented

**Shown with:**

Pants #352 - Black Slim Fit Stretch, Flat Front  
Shirt #WLF - White Laydown Collar, Fitted  
or Shirt #410 - White Laydown Collar, Reg. Fit  
Tie #F702 - Black Colby Windsor  
Pocket Square #H502 - Black Satin

**Also Available:**

Tie #B953 - Royal Blue Lame' Bow

**Men's Sizes Only (Even Sizes)**

|         |         |
|---------|---------|
| Short   | 34 - 46 |
| Regular | 34 - 50 |
| Long    | 36 - 50 |

Boy's sizes not available



Belt: Black



**S** SLIM  
FIT



(800) 236-7303



MOD

# Starlight

#961

MOD | Starlight Lame'

Stone Lame' Tuxedo  
Black Satin Shawl Lapel  
Slim Fit  
1 Button Front  
Vented

**Shown with:**

Pants #352 - Black Slim Fit Stretch, Flat Front  
Shirt #WLF - White Laydown Collar, Fitted  
or Shirt #410 - White Laydown Collar, Reg. Fit  
Tie #B502 - Black Satin Bow  
Pocket Square #H500 - White Satin

**Also Available:**

Tie #B961 - Stone Lame' Bow

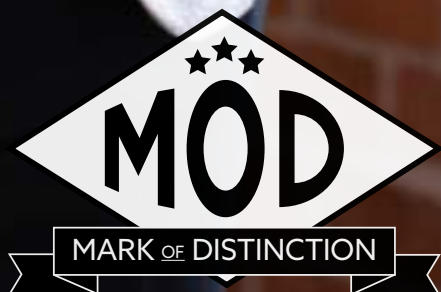
**Men's Sizes Only (Even Sizes)**

|         |         |
|---------|---------|
| Short   | 34 - 46 |
| Regular | 34 - 50 |
| Long    | 36 - 50 |

Boy's sizes not available



Belt: Black





MOD

Starlight

#951

MOD | Starlight Lame'

Silver Lame' Tuxedo  
Black Satin Shawl Lapel  
Slim Fit  
1 Button Front  
Vented

Shown with:

Pants #352 - Black Slim Fit Stretch, Flat Front  
Shirt #WLF - White Laydown Collar, Fitted  
or Shirt #410 - White Laydown Collar, Reg. Fit  
Tie #B502 - Black Satin Bow  
Pocket Square #H502 - Black Satin

Also Available:

Tie #B951 - Silver Lame' Bow

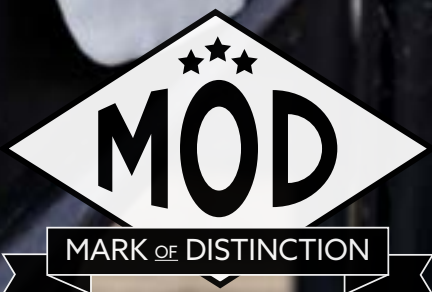
Men's Sizes Only (Even Sizes)

|         |         |
|---------|---------|
| Short   | 34 - 46 |
| Regular | 34 - 50 |
| Long    | 36 - 50 |

Boy's sizes not available



Belt: Black



Allure Men

Venice

#957

Allure Men | Velvet

Aubergine Velvet Tuxedo  
Self Faced Shawl Lapel  
Slim Fit  
1 Button Front  
Vented

Shown with:

Pants #352 - Black Slim Fit Stretch, Flat Front  
Shirt #WLF - White Laydown Collar, Fitted  
or Shirt #410 - White Laydown Collar, Reg. Fit  
Tie #B500 - White Satin Bow  
Pocket Square #H500 - White Satin

Men's Sizes Only (Even Sizes)

|         |         |
|---------|---------|
| Short   | 34 - 46 |
| Regular | 34 - 52 |
| Long    | 36 - 52 |

Boy's sizes not available



Belt: Black



ALLURE MEN

www.duboisformalwear.com



## Allure Men

# Venice

**#954**

**Allure Men | Velvet**

Dusty Rose Velvet Tuxedo  
Self Faced Shawl Lapel  
Slim Fit  
1 Button Front  
Vented

**Shown with:**

Pants #352 - Black Slim Fit Stretch, Flat Front  
Shirt #WLF - White Laydown Collar, Fitted  
or Shirt #410 - White Laydown Collar, Reg. Fit  
Tie #B500 - White Satin Bow  
Pocket Square #H500 - White Satin

**Men's Sizes Only (Even Sizes)**

|         |         |
|---------|---------|
| Short   | 34 - 46 |
| Regular | 34 - 52 |
| Long    | 36 - 52 |

Boy's sizes not available



Belt: Black



ALLURE MEN

(800) 236-7303

## Ike Evening

# Red Carter

#956

### Ike Evening | Red Carter

Red Blended Fabric Tuxedo  
Black Satin Framed Peak Lapel  
1 Button Front  
Slim Fit

#### Shown with:

Pants #352 - Black Slim Fit Stretch, Flat Front  
Shirt #WLF - White Laydown Collar, Fitted  
or Shirt #410 - White Laydown Collar, Reg. Fit  
Vest #V956 - 4 Button Red Carter  
Tie #B502 - Black Satin Bow  
Pocket Square #H502 - Black Satin

#### Men's Sizes Only (Even Sizes)

|         |         |
|---------|---------|
| Short   | 34 - 46 |
| Regular | 34 - 52 |
| Long    | 36 - 52 |

Boy's sizes not available



Belt: Black



IKE EVENING  
BY IKE BEHAR



MOD

Hendrix

#963

MOD | Hendrix

Wool Blend Abstract Mult-Color  
Self-faced Notch Lapel  
1 Button Front  
Slim Fit

Shown with:

Pants #352 - Black Slim Fit Stretch, Flat Front  
Shirt #WLF - White Laydown Collar, Fitted  
or Shirt #410 - White Laydown Collar, Reg. Fit  
Tie #B502 - Black Satin Bow  
Pocket Square #H502 - Black Satin

Also Available:

Tie #B963 - Hendrix Abstract Print Bow

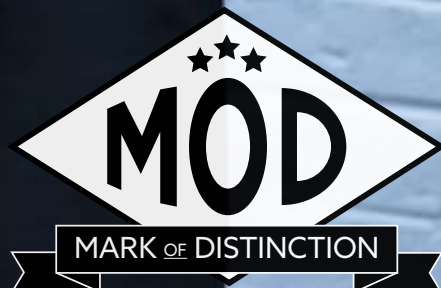
Men's Sizes Only (Even Sizes)

|         |         |
|---------|---------|
| Short   | 34 - 46 |
| Regular | 34 - 50 |
| Long    | 36 - 50 |

Boy's sizes not available



Belt: Black



(800) 236-7303



MOD

*Camo Lamé'*

#959

MOD | Camo Lamé'

Wool Blend Black & Gold Camo Tuxedo  
Black Satin Shawl Lapel  
1 Button Front  
Slim Fit

**Shown with:**

Pants #352 - Black Slim Fit Stretch, Flat Front  
Shirt #WLF - White Laydown Collar, Fitted  
or Shirt #410 - White Laydown Collar, Reg. Fit  
Tie #B959 - Gold Camo Bow  
Pocket Square #H502 - Black Satin

**Men's Sizes Only (Even Sizes)**

|         |         |
|---------|---------|
| Short   | 34 - 46 |
| Regular | 34 - 50 |
| Long    | 36 - 50 |

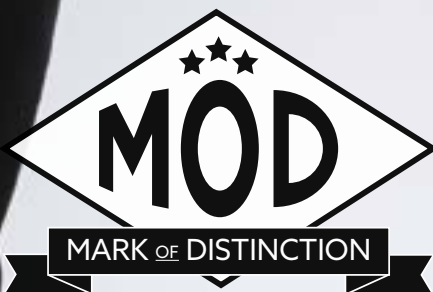
Boy's sizes not available



Belt: Black



SLIM  
FIT





MOD

Ryan

#969

MOD | Ryan

Wool Blend Floral Multi-Color  
Self-faced Notch Lapel  
1 Button Front  
Slim Fit

Shown with:

Pants #352 - Black Slim Fit Stretch, Flat Front  
Shirt #WLF - White Laydown Collar, Fitted  
or Shirt #410 - White Laydown Collar, Reg. Fit  
Tie #B969 - Floral Multi-Color Bow  
Pocket Square #H502 - Black Satin

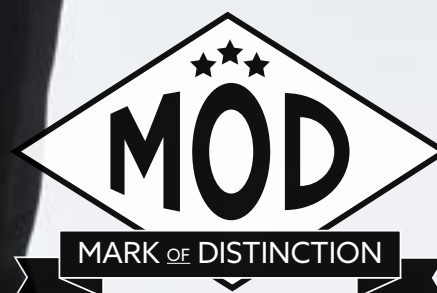
Men's Sizes Only (Even Sizes)

|         |         |
|---------|---------|
| Short   | 34 - 46 |
| Regular | 34 - 50 |
| Long    | 36 - 50 |

Boy's sizes not available



Belt: Black



(800) 236-7303





PHOTOS BY:  
**LINDSEY COLE PHOTOGRAPHY**  
@lindseycolephotography



# Accessories Index

## Essentials

|               |              |
|---------------|--------------|
| Shirts .....  | pages #52-53 |
| Pants.....    | page #54     |
| Shoes.....    | page #55     |
| Jewelry ..... | page #55     |
| Belts.....    | page #55     |

View our catalog online!

[www.duboisformalwear.com](http://www.duboisformalwear.com)

## Accessories

### by Collection

|                                 |              |  |          |
|---------------------------------|--------------|--|----------|
| Portofino by Larr Brio .....    | pages #56-59 | Allure Floral Blossom by Larr Brio ..... | page #65 |
| Satin by Malibu Tie, Inc.....   | pages #60-61 | Camouflage by Mossy Oak.....             | page #66 |
| Tweed.....                      | #62          | Destination by Santana.....              | page #66 |
| Colby by Larr Brio .....        | #63          | Metallics by Larr Brio.....              | page #67 |
| Simply Solid by Larr Brio ..... | page #64     | Allure Dot by Larr Brio.....             | page #67 |

## Accessories

### by Color

|                                 |              |                                |              |
|---------------------------------|--------------|--------------------------------|--------------|
| Pink / Red / Burgundy .....     | pages #68-69 | Purple / Lapis.....            | pages #80-81 |
| Coral / Orange.....             | pages #70-71 | Magenta / Fuchsia / Plum ..... | pages #82-83 |
| Green / Olive .....             | pages #72-73 | White / Yellow / Gold.....     | pages #84-85 |
| Celadon / Clover / Hunter ..... | pages #74-75 | Ivory / Beige / Brown .....    | pages #86-87 |
| Turquoise / Aqua .....          | pages #76-77 | Gray / Pewter / Silver .....   | page #88     |
| Sky Blue / Royal Blue.....      | page #78     | Black.....                     | page #89     |
| Cornflower / Slate / Navy ..... | page #79     |                                |              |

Microfiber  
*Shirts*

LUXE  
**MICROFIBER**  
The Softness of Silk and the Comfort of Cotton

*Du Bois* FORMALWEAR



**White Microfiber Laydown Collar**

Standard Fit #410 Fitted Style #WLF Long Shirt #610



**Ivory Microfiber Laydown Collar**

Standard Fit #414 Fitted Style #ILF Long Shirt #614



**Black Microfiber Laydown Collar**

Standard Fit #406 Fitted Style #BLF Long Shirt #606



**Fitted Styles Available in Microfiber Shirts**

White Laydown Collar #WLF  
Ivory Laydown Collar #ILF  
Black Laydown Collar #BLF





**White**  
Microfiber Wingtip Collar #310



**Ivory**  
Microfiber Wingtip Collar #314

**Fitted Shirt Size Chart**  
for styles #WLF, #ILF and #BLF

| NECK / SLEEVE | XS<br>(13-13.5) | S<br>(14-14.5) | M<br>(15-15.5) | L<br>(16-16.5) | XL<br>(17-17.5) | 2XL<br>(18-18.5) |
|---------------|-----------------|----------------|----------------|----------------|-----------------|------------------|
| 30-31         | X               | X              | X              | X              |                 |                  |
| 32-33         | X               | X              | X              | X              | X               | X                |
| 34-35         |                 | X              | X              | X              | X               | X                |
| 36-37         |                 | X              | X              | X              | X               | X                |
| 38-39         |                 |                | X              | X              | X               | X                |
| 40-41         |                 |                |                | X              | X               | X                |
| Max. Chest    |                 | 32-37          | 37-41          | 41-44          | 44-47           | 46-50            |
| Max. Waist    |                 | 27-31          | 30-34          | 33-37          | 36-41           | 39-44            |

# Tuxedo and Suit Trousers



**Brown Archer - Ike Evening**  
Slim Fit #125



**Heather Gray - Kenneth Cole**  
Slim Fit #151



**Black - Ike Behar**  
Slim Fit #244



**Dusk Blue - Ike Behar**  
Slim Fit #133



**Burgundy - Ike Behar**  
Slim Fit #186



**Tan - David Major**  
Stretch Slim Fit #355



**Light Gray - David Major**  
Stretch Slim Fit #351



**Black - David Major**  
Stretch Slim Fit #352



**French Blue - David Major**  
Stretch Slim Fit #333



**Cinnamon - MOD**  
Slim Fit #126



**Ivory - FCG**  
Modern Fit #407



**Charcoal Gray - Allure Men**  
Slim Fit #191



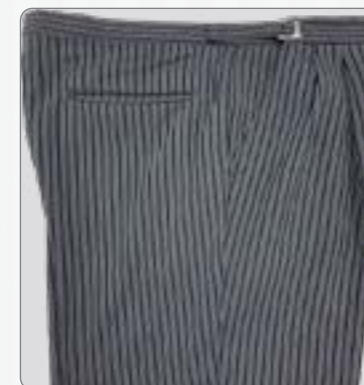
**Black - Larr Brio**  
Slim Fit #144



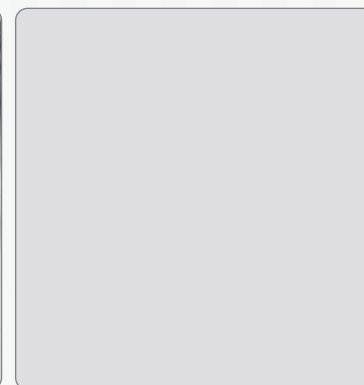
**Navy Blue - Ike Behar**  
Slim Fit #243



**Hunter Green - Ike Behar**  
Slim Fit #128



**Striped - Chaps, Ralph Lauren**  
Classic Fit #121



**Steel Gray - Couture 1910**  
Slim Fit #111



**Black - FWI**  
Classic Fit #562



**Denim Blue - Allure Men**  
Slim Fit #243



**White - FCG**  
Slim Fit #280



Formal

# Shoes



**White Matte Finish**  
#WHMT



**Classic Ivory Jazz Oxford**  
#K200



**Allure Cognac Matte Finish**  
#CGMT



**Brown Matte Finish**  
#BRMT



**Classic Black Jazz Oxford**  
#T100



**Black Matte Finish**  
#BLMT



**Black Patent Finish**  
#BLPT

Jewelry

# Options



**White / Silver Basic**  
Studs and Cufflinks  
"W"



**Black / Silver Basic**  
Studs and Cufflinks  
"B"



**Black / Gold Basic**  
Studs and Cufflinks  
"D"



**Gray / Silver Basic**  
Studs and Cufflinks  
"G"

Belt

# Colors



**Black**  
Black / Silver Buckle



**Cognac**  
Black / Silver Buckle



**White**  
White / Silver Buckle



**Brown**  
Brown / Silver Buckle

Larr Brio

*Portafina*

See chart on page #55 for a complete listing of style numbers and colors available in this collection.

**Full Back Vest**

| Size | Fits Coat Size(s) |
|------|-------------------|
| S    | 18 - 38           |
| M*   | 39 - 42           |
| L*   | 43 - 44           |
| XL*  | 46 - 48           |
| 2XL  | 50 - 52           |
| 3XL  | 54 - 56           |

**Available in:**

- Vest
- Bow Tie
- Striped Windsor Tie
- Solid Windsor Tie
- Paisley Windsor Tie
- Ombre Windsor Tie

**Open Back Vest**

|     |         |
|-----|---------|
| BS  | 3 - 6   |
| BM  | 7 - 12  |
| BL  | 14 - 16 |
| 4XL | 58+     |

**Pocket Squares**

- Match Vest Pattern
- Match Ombre Ties

\*Long Vests Available



Shown in Turquoise  
Vest #M460  
Bow Tie #S460  
Pocket Square #H460



Vest  
Bow Tie  
Pocket Square



Striped  
Windsor Tie



Solid  
Windsor Tie



Paisley  
Windsor Tie



Ombre Tie  
Pocket Square



Larr Brio

*Portafina*

Shown in Ruby  
V #M429  
B #FS29  
PS #H429



(800) 236-7303



All of the colors shown are available in vests, bow ties & windsor ties. The coordinating pocket squares are also listed. For color matching, please use your Swatch Wheel or call for a free sample.



**Ruby Red**  
 Vest #M429  
 Bow Tie #S429  
 P.S. n/a (use H506)  
 Ombre Tie #T429  
 Ombre PS n/a (use H506)  
 Paisley #FP29  
 Solid #FS29  
 Stripe #F429



**Apple**  
 Vest #M426  
 Bow Tie #S426  
 Pocket Square #H426  
 Ombre Tie #T426  
 Ombre PS #HT26  
 Paisley #FP26  
 Solid #FS26  
 Stripe #F426



**Wine**  
 Vest #M466  
 Bow Tie #S466  
 P.S. n/a (use H636)  
 Ombre Tie #T466  
 Ombre PS n/a (use H636)  
 Paisley #FP66



**Passion**  
 Vest #M455  
 Bow Tie #S455  
 Pocket Square #H455  
 Ombre Tie #T455  
 Ombre PS #HT55  
 Paisley #FP55  
 Solid #FS55  
 Stripe #F455



**Watermelon**  
 Vest #M414  
 Bow Tie #S414  
 Pocket Square #H414  
 Ombre Tie #T414  
 Ombre PS #HT14  
 Paisley #FP14  
 Solid #FS14  
 Stripe #F414



**Azalea**  
 Vest #M444  
 Bow Tie #S444  
 Pocket Square #H444  
 Ombre Tie #T444  
 Ombre PS #HT44  
 Paisley #FP44  
 Solid #FS44  
 Stripe #F444




**Fuchsia**  
 Vest #M404  
 Bow Tie #S404  
 Pocket Square #H404  
 Ombre Tie #T404  
 Ombre PS #HT04  
 Paisley #FP04  
 Solid #FS04  
 Stripe #F404



**Flamingo**  
 Vest #M434  
 Bow Tie #S434  
 Pocket Square #H434  
 Ombre Tie #T434  
 Ombre PS #HT34  
 Paisley #FP34  
 Solid #FS34  
 Stripe #F434



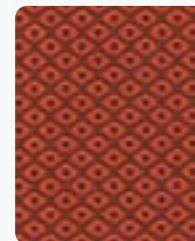
**Terra Cotta**  
 Vest #M420  
 Bow Tie #S420  
 Pocket Square #H420  
 Ombre Tie #T420  
 Ombre PS #HT20  
 Paisley #FP20  
 Solid #FS20  
 Stripe #F420



**Palm Beach Coral**  
 Vest #M486  
 Bow Tie #S486  
 Pocket Square #H486  
 Ombre Tie #T486  
 Ombre PS #HT86  
 Paisley #FP86  
 Solid #FS86  
 Stripe #F486



**Cinnamon**  
 Vest #M406  
 Bow Tie #S406  
 Pocket Square #H406  
 Ombre Tie #T406  
 Ombre PS #HT06  
 Paisley #FP06  
 Solid #FS06  
 Stripe #F406



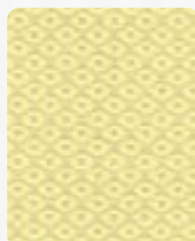
**Persimmon**  
 Vest #M416  
 Bow Tie #S416  
 Pocket Square #H416  
 Ombre Tie #T416  
 Ombre PS #HT16  
 Paisley #FP16  
 Solid #FS16  
 Stripe #F416



**Tangerine**  
 Vest #M475  
 Bow Tie #S475  
 Pocket Square #H475  
 Ombre Tie #T475  
 Ombre PS #HT75  
 Paisley #FP75  
 Solid #FS75  
 Stripe #F475



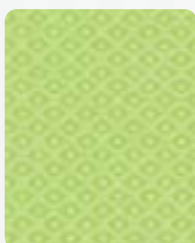
**Saffron**  
 Vest #M474  
 Bow Tie #S474  
 Pocket Square #H474  
 Ombre Tie #T474  
 Ombre PS #HT74  
 Paisley #FP74  
 Solid #FS74  
 Stripe #F474



**Yellow**  
 Vest #M410  
 Bow Tie #S410  
 Pocket Square #H410  
 Ombre Tie #T410  
 Ombre PS #HT10  
 Paisley #FP10  
 Solid #FS10  
 Stripe #F410



**Honeydew**  
 Vest #M465  
 Bow Tie #S465  
 Pocket Square #H465  
 Ombre Tie #T465  
 Ombre PS #HT65  
 Paisley #FP65  
 Solid #FS65  
 Stripe #F465



**Lime**  
 Vest #M449  
 Bow Tie #S449  
 Pocket Square #H449  
 Ombre Tie #T449  
 Ombre PS #HT49  
 Paisley #FP49  
 Solid #FS49  
 Stripe #F449




**Kelly Green**  
 Vest #M432  
 Bow Tie #S432  
 Pocket Square #H432  
 Ombre Tie #T432  
 Ombre PS #HT32  
 Paisley #FP32  
 Solid #FS32  
 Stripe #F432



**Jade Green**  
 Vest #M451  
 Bow Tie #S451  
 Pocket Square #H451  
 Ombre Tie #T451  
 Ombre PS #HT51  
 Paisley #FP51  
 Solid #FS51  
 Stripe #F451



**Clover**  
 Vest #M418  
 Bow Tie #S418  
 Pocket Square #H418  
 Ombre Tie #T418  
 Ombre PS #HT18  
 Paisley #FP18  
 Solid #FS18  
 Stripe #F418



**Sage**  
 Vest #M482  
 Bow Tie #S482  
 Pocket Square #H482  
 Ombre Tie #T482  
 Ombre PS #HT82  
 Paisley #FP82  
 Solid #FS82  
 Stripe #F482




**Olive**  
 Vest #M462  
 Bow Tie #S462  
 Pocket Square #H462  
 Ombre Tie #T462  
 Ombre PS #HT62  
 Paisley #FP62  
 Solid #FS62  
 Stripe #F462



**Fern**  
 Vest #M438  
 Bow Tie #S438  
 Pocket Square #H438  
 Ombre Tie #T438  
 Ombre PS #HT38  
 Paisley #FP38  
 Solid #FS38  
 Stripe #F438



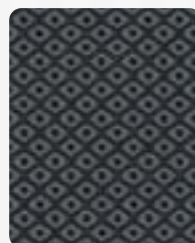
**Holly**  
 Vest #M452  
 Bow Tie #S452  
 Pocket Square #H452  
 Ombre Tie #T452  
 Ombre PS #HT52  
 Paisley #FP52  
 Solid #FS52  
 Stripe #F452



**White**  
 Vest #M400  
 Bow Tie #S400  
 Pocket Square #H400  
 Ombre Tie #T400  
 Ombre PS #HT00  
 Paisley #FP00  
 Solid #FS00  
 Stripe #F400



**Platinum**  
 Vest #M401  
 Bow Tie #S401  
 Pocket Square #H401  
 Ombre Tie #T401  
 Ombre PS #HT01  
 Paisley #FP01  
 Solid #FS01  
 Stripe #F401



**Pewter**  
 Vest #M431  
 Bow Tie #S431  
 Pocket Square #H431  
 Ombre Tie #T431  
 Ombre PS #HT31  
 Paisley #FP31  
 Solid #FS31  
 Stripe #F431



**Black**  
 Vest #M402  
 Bow Tie #S402  
 Pocket Square #H402  
 Ombre Tie #T402  
 Ombre PS #HT02  
 Paisley #FP02  
 Solid #FS02  
 Stripe #F402





**Pool**  
 Vest #M411  
 Bow Tie #S411  
 Pocket Square #H411  
 Ombre Tie #T411  
 Ombre PS #HT11  
 Paisley #FP11  
 Solid #FS11  
 Stripe #F411



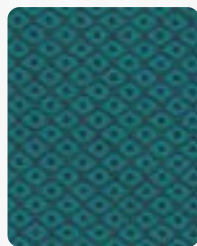
**Aqua**  
 Vest #M408  
 Bow Tie #S408  
 Pocket Square #H408  
 Ombre Tie #T408  
 Ombre PS #HT08  
 Paisley #FP08  
 Solid #FS08  
 Stripe #F408



**Mermaid**  
 Vest #M461  
 Bow Tie #S461  
 Pocket Square #H461  
 Ombre Tie #T461  
 Ombre PS #HT61  
 Paisley #FP61  
 Solid #FS61  
 Stripe #F461



**Peacock**  
 Vest #M492  
 Bow Tie #S492  
 Pocket Square #H492  
 Ombre Tie #T492  
 Ombre PS #HT92  
 Paisley #FP92  
 Solid #FS92  
 Stripe #F492



**Oasis**  
 Vest #M421  
 Bow Tie #S421  
 Pocket Square #H421  
 Ombre Tie #T421  
 Ombre PS #HT21  
 Paisley #FP21  
 Solid #FS21  
 Stripe #F421



**Turquoise**  
 Vest #M460  
 Bow Tie #S460  
 Pocket Square #H460  
 Ombre Tie #T460  
 Ombre PS #HT60  
 Paisley #FP60  
 Solid #FS60  
 Stripe #F460



**Blue Ice**  
 Vest #M443  
 Bow Tie #S443  
 Pocket Square #H443  
 Ombre Tie #T443  
 Ombre PS #HT43  
 Paisley #FP43  
 Solid #FS43  
 Stripe #F443



**Sky Blue**  
 Vest #M403  
 Bow Tie #S403  
 Pocket Square #H403  
 Ombre Tie #T403  
 Ombre PS #HT03  
 Paisley #FP03  
 Solid #FS03  
 Stripe #F403



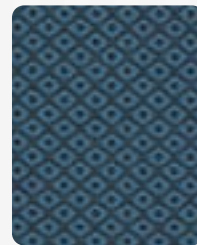
**Dark Peacock**  
 Vest #M446  
 Bow Tie #S446  
 Pocket Square #H446  
 Ombre Tie #T446  
 Ombre PS #HT46  
 Paisley #FP46  
 Solid #FS46  
 Stripe #F446



**Aqua Marine**  
 Vest #M422  
 Bow Tie #S422  
 Pocket Square #H422  
 Ombre Tie #T422  
 Ombre PS n/a (use H422)  
 Paisley #FP22  
 Solid #FS22  
 Stripe #F422



**Marine Blue**  
 Vest #M439  
 Bow Tie #S439  
 Pocket Square #H439  
 Ombre Tie #T439  
 Ombre PS #HT39  
 Paisley #FP39  
 Solid #FS39  
 Stripe #F439



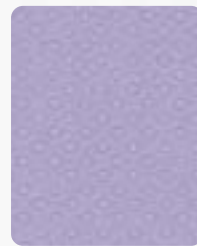
**Serene**  
 Vest #M433  
 Bow Tie #S433  
 Pocket Square #H433  
 Ombre Tie #T433  
 Ombre PS #HT33  
 Paisley #FP33  
 Solid #FS33  
 Stripe #F433



**Cornflower**  
 Vest #M423  
 Bow Tie #S423  
 Pocket Square #H423  
 Ombre Tie #T423  
 Ombre PS #HT23  
 Paisley #FP23  
 Solid #FS23  
 Stripe #F423



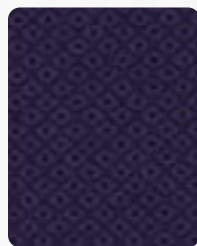
**Royal Blue**  
 Vest #M413  
 Bow Tie #S413  
 Pocket Square #H413  
 Ombre Tie #T413  
 Ombre PS #HT13  
 Paisley #FP13  
 Solid #FS13  
 Stripe #F413



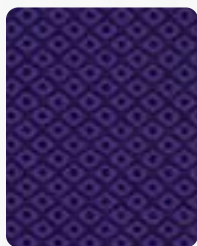
**Jasmine**  
 Vest #M450  
 Bow Tie #S450  
 Pocket Square #H450  
 Ombre Tie #T450  
 Ombre PS #HT50  
 Paisley #FP50  
 Solid #FS50  
 Stripe #F450



**Wisteria**  
 Vest #M485  
 Bow Tie #S485  
 Pocket Square #H485  
 Ombre Tie #T485  
 Ombre PS #HT85  
 Paisley #FP85  
 Solid #FS85  
 Stripe #F485



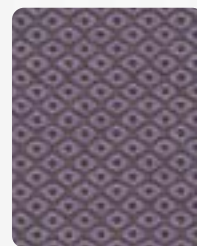
**Lapis**  
 Vest #M427  
 Bow Tie #S427  
 Pocket Square #H427  
 Ombre Tie #T427  
 Ombre PS #HT27  
 Paisley #FP27  
 Solid #FS27  
 Stripe #F427



**Regency**  
 Vest #M437  
 Bow Tie #S437  
 Pocket Square #H437  
 Ombre Tie #T437  
 Ombre PS #HT37  
 Paisley #FP37  
 Solid #FS37  
 Stripe #F437



**Sangria**  
 Vest #M473  
 Bow Tie #S473  
 Pocket Square #H473  
 Ombre Tie #T473  
 Ombre PS #HT73  
 Paisley #FP73  
 Solid #FS73  
 Stripe #F473



**Victorian Lilac**  
 Vest #M417  
 Bow Tie #S417  
 Pocket Square #H417  
 Ombre Tie #T417  
 Ombre PS #HT17  
 Paisley #FP17  
 Solid #FS17  
 Stripe #F417



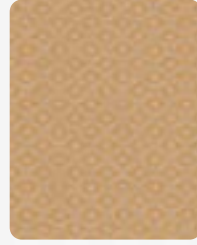
**Plum**  
 Vest #M440  
 Bow Tie #S440  
 Pocket Square #H440  
 Ombre Tie #T440  
 Ombre PS #HT40  
 Paisley #FP40  
 Solid #FS40  
 Stripe #F440



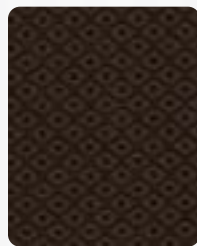
**Purple**  
 Vest #M407  
 Bow Tie #S407  
 Pocket Square #H407  
 Ombre Tie #T407  
 Ombre PS n/a (use H607)  
 Paisley #FP07  
 Solid #FS07  
 Stripe #F407



**Violet**  
 Vest #M453  
 Bow Tie #S453  
 Pocket Square #H453  
 Ombre Tie #T453  
 Ombre PS #HT53  
 Paisley #FP53  
 Solid #FS53  
 Stripe #F453



**Golden**  
 Vest #M442  
 Bow Tie #S442  
 Pocket Square #H442  
 Ombre Tie #T442  
 Ombre PS #HT42  
 Solid #FS42  
 Stripe #F442



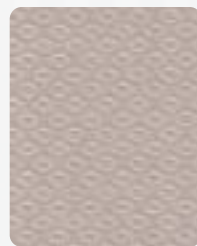
**Chocolate**  
 Vest #M425  
 Bow Tie #S425  
 Pocket Square #H425  
 Ombre Tie #T425  
 Ombre PS #HT25  
 Paisley #FP25  
 Solid #FS25  
 Stripe #F425



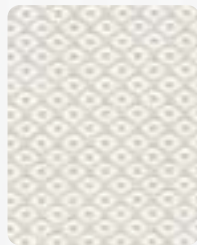
**Cappuccino**  
 Vest #M405  
 Bow Tie #S405  
 Pocket Square #H405  
 Ombre Tie #T405  
 Ombre PS #HT05  
 Paisley #FP05  
 Solid #FS05  
 Stripe #F405



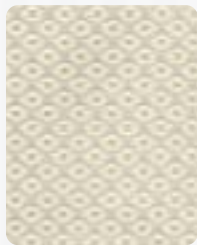
**Latte**  
 Vest #M415  
 Bow Tie #S415  
 Pocket Square #H415  
 Ombre Tie #T415  
 Ombre PS #HT15  
 Paisley #FP15  
 Solid #FS15  
 Stripe #F415



**Champagne**  
 Vest #M412  
 Bow Tie #S412  
 Pocket Square #H412  
 Ombre Tie #T412  
 Ombre PS #HT12  
 Paisley #FP12  
 Solid #FS12  
 Stripe #F412



**Diamond White**  
 Vest #M409  
 Bow Tie #S409  
 Pocket Square #H409  
 Ombre Tie #T409  
 Ombre PS #HT09  
 Paisley #FP09  
 Solid #FS09  
 Stripe #F409



**Antique**  
 Vest #M419  
 Bow Tie #S419  
 Pocket Square #H419  
 Ombre Tie #T419  
 Ombre PS #HT19  
 Paisley #FP19  
 Solid #FS19  
 Stripe #F419

*Satin*

**Full Back Vest**

| Size | Fits Coat Size(s) |
|------|-------------------|
| S    | 18 - 38           |
| M*   | 39 - 42           |
| L*   | 43 - 44           |
| XL*  | 46 - 48           |
| 2XL  | 50 - 52           |
| 3XL  | 54 - 56           |

**Available in:**

- Vest
- Windsor Tie
- Bow Tie
- Pocket Square

\* Long Vests Available



**White**

Vest Style #V500  
Windsor Tie #F500  
Bow Tie #B500  
Pocket Square #H500



**Black**

Vest Style #V502  
Windsor Tie #F502  
Bow Tie #B502  
Pocket Square #H502

**Open Back Vest**

|     |         |
|-----|---------|
| BS  | 3 - 6   |
| BM  | 7 - 12  |
| BL  | 14 - 16 |
| 4XL | 58+     |



**VI Silver**

Vest Style #V511  
Windsor Tie #F511  
Bow Tie #B511  
Pocket Square #H511



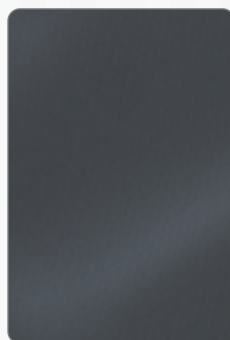
**PV Platinum**

Vest Style #V521  
Windsor Tie #F521  
Bow Tie #B521  
Pocket Square #H521



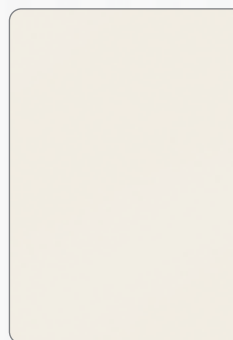
**Victorian Pewter**

Vest Style #V531  
Windsor Tie #F531  
Bow Tie #B531  
Pocket Square #H531



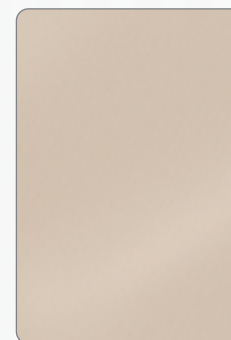
**Bali Gray**

Vest Style #V541  
Windsor Tie #F541  
Bow Tie #B541  
Pocket Square #H541



**Ivory**

Vest Style #V509  
Windsor Tie #F509  
Bow Tie #B509  
Pocket Square #H509



**Fino Cream**

Vest Style #V505  
Windsor Tie #F505  
Bow Tie #B505  
Pocket Square #H505



**Cappuccino**

Vest Style #V525  
Windsor Tie #F525  
Bow Tie #B525  
Pocket Square #H525



**Capri Red**

Vest Style #V506  
Windsor Tie #F506  
Bow Tie #B506  
Pocket Square #H506



**Fino Claret**

Vest Style #V526  
Windsor Tie #F526  
Bow Tie #B526  
Pocket Square #H526



**Wine**

Vest Style #V684  
Windsor Tie #F684  
Bow Tie #B684  
Pocket Square #H684



**Fino Burgundy**

Vest Style #V636  
Windsor Tie #F636  
Bow Tie #B636  
Pocket Square #H636



**Rosewood**

Vest Style #V544  
Windsor Tie #F544  
Bow Tie #B544  
Pocket Square #H544



**Watermelon**

Vest Style #V634  
Windsor Tie #F634  
Bow Tie #B634  
Pocket Square #H634



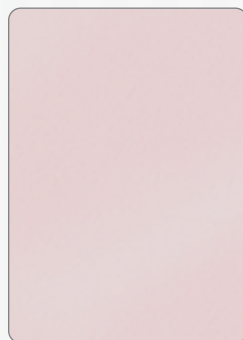
**PV Cerise**

Vest Style #V624  
Windsor Tie #F624  
Bow Tie #B624  
Pocket Square #H624



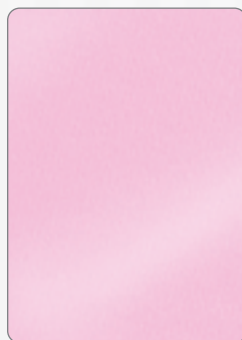
**Paradise Pink**

Vest Style #V504  
Windsor Tie #F504  
Bow Tie #B504  
Pocket Square #H504



**Winter Melon**

Vest Style #V697  
Windsor Tie #F697  
Bow Tie #B697  
Pocket Square #H697



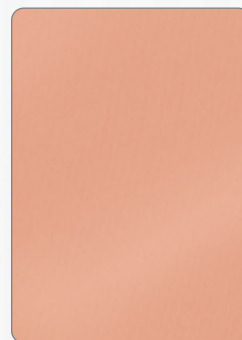
**BL Pink**

Vest Style #V514  
Windsor Tie #F514  
Bow Tie #B514  
Pocket Square #H514



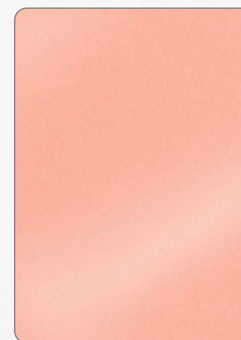
**Quartz**

Vest Style #V615  
Windsor Tie #F615  
Bow Tie #B615  
Pocket Square #H615



**Porto Peach**

Vest Style #V546  
Windsor Tie #F546  
Bow Tie #B546  
Pocket Square #H546



**Capri Peach**

Vest Style #V536  
Windsor Tie #F536  
Bow Tie #B536  
Pocket Square #H536

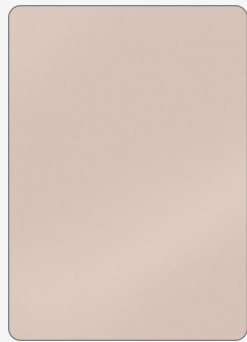




**Rio Maize**  
Vest Style #V560  
Windsor Tie #F560  
Bow Tie #B560  
Pocket Square #H560



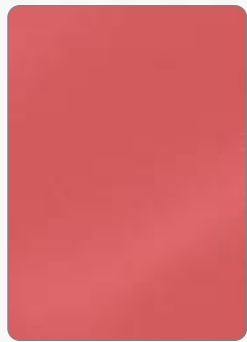
**Victorian Gold**  
Vest Style #V530  
Windsor Tie #F530  
Bow Tie #B530  
Pocket Square #H530



**Beige**  
Vest Style #V522  
Windsor Tie #F522  
Bow Tie #B522  
Pocket Square #H522



**Fiesta Coral**  
Vest Style #V584  
Windsor Tie #F584  
Bow Tie #B584  
Pocket Square #H584



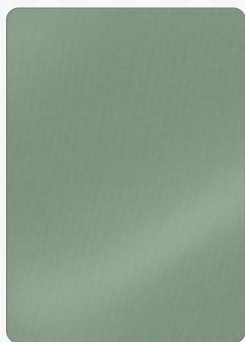
**Shrimp Toast**  
Vest Style #V604  
Windsor Tie #F604  
Bow Tie #B604  
Pocket Square #H604



**Sun Coral**  
Vest Style #V576  
Windsor Tie #F576  
Bow Tie #B576  
Pocket Square #H576



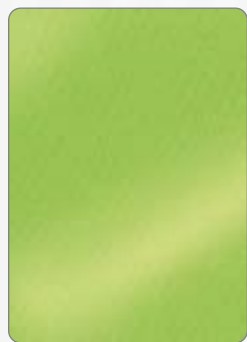
**Fino Copper**  
Vest Style #V626  
Windsor Tie #F626  
Bow Tie #B626  
Pocket Square #H626



**Fino Celadon**  
Vest Style #V608  
Windsor Tie #F608  
Bow Tie #B608  
Pocket Square #H608



**Light Olive**  
Vest Style #V558  
Windsor Tie #F558  
Bow Tie #B558  
Pocket Square #H558



**Rio Lime**  
Vest Style #V548  
Windsor Tie #F548  
Bow Tie #B548  
Pocket Square #H548



**Kiwi**  
Vest Style #V568  
Windsor Tie #F568  
Bow Tie #B568  
Pocket Square #H568



**Capri Green**  
Vest Style #V588  
Windsor Tie #F588  
Bow Tie #B588  
Pocket Square #H588



**Clover**  
Vest Style #V578  
Windsor Tie #F578  
Bow Tie #B578  
Pocket Square #H578



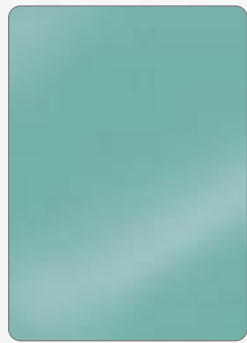
**Bali Hunter**  
Vest Style #V648  
Windsor Tie #F648  
Bow Tie #B648  
Pocket Square #H648



**Night Teal**  
Vest Style #V552  
Windsor Tie #F552  
Bow Tie #B552  
Pocket Square #H552



**Baja Aqua**  
Vest Style #V678  
Windsor Tie #F678  
Bow Tie #B678  
Pocket Square #H678



**Fino Jade**  
Vest Style #V688  
Windsor Tie #F688  
Bow Tie #B688  
Pocket Square #H688



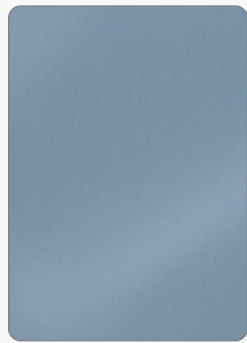
**Premium Turquoise**  
Vest Style #V573  
Windsor Tie #F573  
Bow Tie #B573  
Pocket Square #H573



**Riviera Turquoise**  
Vest Style #V543  
Windsor Tie #F543  
Bow Tie #B543  
Pocket Square #H543



**PV Royal**  
Vest Style #V613  
Windsor Tie #F613  
Bow Tie #B613  
Pocket Square #H613



**Desert Blue**  
Vest Style #V523  
Windsor Tie #F523  
Bow Tie #B523  
Pocket Square #H523



**Ocean**  
Vest Style #V653  
Windsor Tie #F653  
Bow Tie #B653  
Pocket Square #H653



**PV Marine**  
Vest Style #V663  
Windsor Tie #F663  
Bow Tie #B663  
Pocket Square #H663



**Fino Magenta**  
Vest Style #V664  
Windsor Tie #F664  
Bow Tie #B664  
Pocket Square #H664



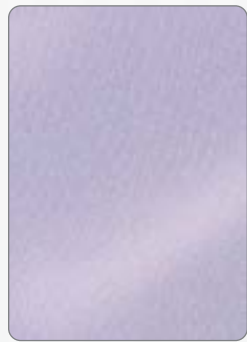
**Majestic Purple**  
Vest Style #V617  
Windsor Tie #F617  
Bow Tie #B617  
Pocket Square #H617



**Lapis**  
Vest Style #V637  
Windsor Tie #F637  
Bow Tie #B637  
Pocket Square #H637



**Porto Violet**  
Vest Style #V567  
Windsor Tie #F567  
Bow Tie #B567  
Pocket Square #H567



**Pretty Lilac**  
Vest Style #V507  
Windsor Tie #F507  
Bow Tie #B507  
Pocket Square #H507

# Suits America

## Tweed

### Full Back Vest

| Size | Fits Coat Size(s) |
|------|-------------------|
| S    | 18 - 38           |
| M    | 39 - 42           |
| L    | 43 - 44           |
| XL   | 46 - 48           |
| 2XL  | 50 - 52           |
| 3XL  | 54 - 56           |
| 4XL  | 58+               |

### Full Back Vest

|    |         |
|----|---------|
| BS | 3 - 6   |
| BM | 7 - 12  |
| BL | 14 - 16 |

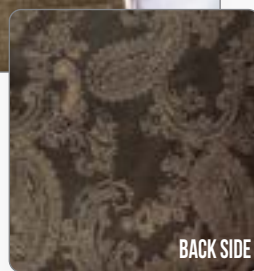
### Available in:

- Vest
- Bow Tie
- Windsor Tie
- Pocket Square



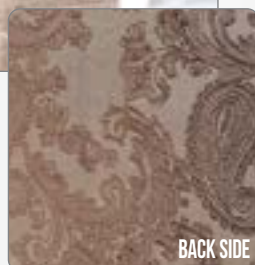
#### Gray

Vest #V101  
Windsor Tie #F101  
Bow Tie #B101  
Pocket Square #H101



#### Tan

Vest #V105  
Windsor Tie #F105  
Bow Tie #B105  
Pocket Square #H105



#### Beige

Vest #V109  
Windsor Tie #F109  
Bow Tie #B109  
Pocket Square #H109





Calby



**Black**  
Windsor Tie #F702  
Bow Tie #B702  
Pocket Square #H702



**Graphite**  
Windsor Tie #F731  
Bow Tie #B731  
Pocket Square #H731



**Platinum**  
Windsor Tie #F701  
Bow Tie #B701  
Pocket Square #H701

- Available in:**
- Windsor Tie
  - Bow Tie
  - Pocket Square



**White**  
Windsor Tie #F700  
Bow Tie #B700  
Pocket Square #H700



**Ivory**  
Windsor Tie #F709  
Bow Tie #B709  
Pocket Square #H709



**Portobello**  
Windsor Tie #F722  
Bow Tie #B722  
Pocket Square #H722



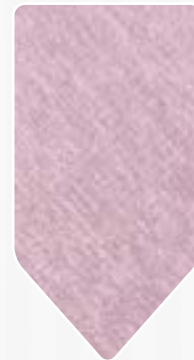
**Blush**  
Windsor Tie #F704  
Bow Tie #B704  
Pocket Square #H704



**Rose Gold**  
Windsor Tie #F742  
Bow Tie #B742  
Pocket Square #H742



**AZ Dusty Rose**  
Windsor Tie #F714  
Bow Tie #B714  
Pocket Square #H714



**Quartz**  
Windsor Tie #F715  
Bow Tie #B715  
Pocket Square #H715



**Apple**  
Windsor Tie #F726  
Bow Tie #B726  
Pocket Square #H726



**Burgundy**  
Windsor Tie #F736  
Bow Tie #B736  
Pocket Square #H736



**Cinnamon**  
Windsor Tie #F725  
Bow Tie #B725  
Pocket Square #H725



**Cognac**  
Windsor Tie #F705  
Bow Tie #B705  
Pocket Square #H705



**Forest Green**  
Windsor Tie #F738  
Bow Tie #B738  
Pocket Square #H738



**Hunter**  
Windsor Tie #F748  
Bow Tie #B748  
Pocket Square #H748



**Meadow**  
Windsor Tie #F758  
Bow Tie #B758  
Pocket Square #H758



**Desert Blue**  
Windsor Tie #F723  
Bow Tie #B723  
Pocket Square #H723



**Serene**  
Windsor Tie #F733  
Bow Tie #B733  
Pocket Square #H733



**Cobalt**  
Windsor Tie #F763  
Bow Tie #B763  
Pocket Square #H763



**Dark Navy**  
Windsor Tie #F724  
Bow Tie #B724  
Pocket Square #H724

# Simply Solid

**Available in:**

- Thin Stripe Windsor Tie
- Pocket Square

Neon Lime and Neon Orange also available in fullback vests



Shown with:  
Satin Vest - Baja Aqua #V678  
Simply Solid Tie - Mint #F308  
Shirt #400



**White**  
Windsor Tie #F300  
Pocket Square #H300



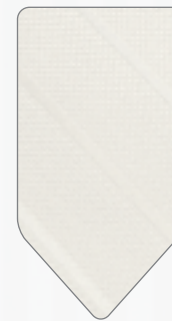
**Mercury**  
Windsor Tie #F301  
Pocket Square #H301



**Charcoal**  
Windsor Tie #F311  
Pocket Square #H311



**Black**  
Windsor Tie #F302  
Pocket Square #H302



**Diamond White**  
Windsor Tie #F309  
Pocket Square #H309



**Golden**  
Windsor #F389  
Pocket Sq. #H389



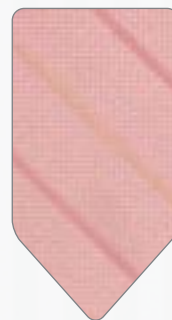
**Sunset**  
Windsor Tie #F306  
Pocket Square #H306



**Quartz**  
Windsor Tie #F315  
Pocket Square #H315



**Blush**  
Windsor Tie #F304  
Pocket Square #H304



**Salmon**  
Windsor Tie #F314  
Pocket Square #H314



**Merlot**  
Windsor #F366  
Pocket Square #H366



**Merlot (Solid)**  
Windsor #W366  
Pocket Square #H366



**Desert Blue**  
Windsor Tie #F323  
Pocket Square #H323



**Purple Storm**  
Windsor Tie #F307  
Pocket Square #H307



**Cassis**  
Windsor Tie #F317  
Pocket Square #H317



**Marine**  
Windsor #F383  
Pocket Sq. #H383



**Steel Blue (Solid)**  
Windsor Tie #W353  
Bow Tie #S353  
Pocket Square #H353



**Mint**  
Windsor Tie #F308  
Pocket Square #H308



**Neon Orange**  
Windsor Tie #F316  
Pocket Square #H316



**Neon Orange**  
Vest Style #V316  
Windsor Tie #W316  
Bow Tie #S316  
Pocket Square #H316



**Neon Lime**  
Windsor Tie #F318  
Pocket Square #H318



**Neon Lime**  
Vest Style #V318  
Windsor Tie #W318  
Bow Tie #S318  
Pocket Square #H318



**Tarragon**  
Windsor Tie #F348  
Pocket Square #H348



**Moss**  
Windsor Tie #F388  
Pocket Square #H388



# Blossam Floral



**White**  
Windsor Tie #F860  
Bow Tie #B860  
Pocket Square #H860



**Heather**  
Windsor Tie #F867  
Bow Tie #B867  
Pocket Square #H867



**Steel**  
Windsor Tie #F861  
Bow Tie #B861  
Pocket Square #H861



**Black**  
Windsor Tie #F862  
Bow Tie #B862  
Pocket Square #H862



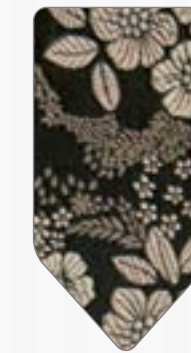
**Diamond White**  
Windsor Tie #F869  
Bow Tie #B869  
Pocket Square #H869



**Golden/Champagne**  
Windsor Tie #F885  
Bow Tie #B885  
Pocket Square #H885



**Sandstone**  
Windsor Tie #F865  
Bow Tie #B865  
Pocket Square #H865



**Dark Sandstone**  
Windsor Tie #F875  
Bow Tie #B875  
Pocket Square #H875



- Available in:**
- Windsor Tie
  - Bow Tie
  - Pocket Square



**Bridal Pink**  
Windsor Tie #F874  
Bow Tie #B874  
Pocket Square #H874



**Rose Gold**  
Windsor Tie #F884  
Bow Tie #B884  
Pocket Square #H884



**Pink Burgundy**  
Windsor Tie #F876  
Bow Tie #B876  
Pocket Square #H876



**Light Pink**  
Windsor Tie #F864  
Bow Tie #B864  
Pocket Square #H864



**Dark Greige**  
Windsor Tie #F895  
Bow Tie #B895  
Pocket Square #H895



**Bridal Blue**  
Windsor Tie #F894  
Bow Tie #B894  
Pocket Square #H894



**Light Blue**  
Windsor Tie #F893  
Bow Tie #B893  
Pocket Square #H893



**Lilac**  
Windsor Tie #F887  
Bow Tie #B887  
Pocket Square #H887



**Burgundy**  
Windsor Tie #F866  
Bow Tie #B866  
Pocket Square #H866



**Burnt Orange**  
Windsor Tie #F886  
Bow Tie #B886  
Pocket Square #H886



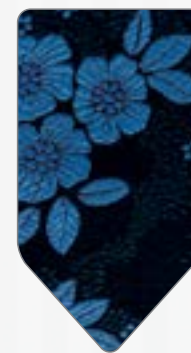
**Hunter**  
Windsor Tie #F868  
Bow Tie #B868  
Pocket Square #H868



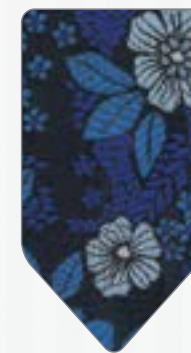
**Steel/Waterfall**  
Windsor Tie #F878  
Bow Tie #B878  
Pocket Square #H878



**Navy**  
Windsor Tie #F873  
Bow Tie #B873  
Pocket Square #H873



**Black Royal**  
Windsor Tie #F883  
Bow Tie #B883  
Pocket Square #H883



**Cobalt**  
Windsor Tie #F863  
Bow Tie #B863  
Pocket Square #H863



**Blue Violet**  
Windsor Tie #F877  
Bow Tie #B877  
Pocket Square #H877



# Mossy Oak Break-Up Camouflage



**Green Camouflage**

Vest #V245 Bow Tie #S245 Shirt #310  
(Not Shown) Windsor Tie #F245 Pocket Square #H245



**White Camouflage**

Vest #V240 Windsor #F240 Shirt N/A  
(Not Shown) Bow Tie #S240 Pocket Square #H240

**Full Back Vest**

| Size | Fits Coat Size(s) |
|------|-------------------|
| S    | 18 - 38           |
| M*   | 39 - 42           |
| L*   | 43 - 44           |
| XL*  | 46 - 48           |
| 2XL  | 50 - 52           |
| 3XL  | 54 - 56           |

**Available in:**

- Vest
- Bow Tie
- Windsor Tie
- Pocket Square

\* Long Vests Available

**Open Back Vest**

|     |         |
|-----|---------|
| BS  | 3 - 6   |
| BM  | 7 - 12  |
| BL  | 14 - 16 |
| 4XL | 58+     |



# Santana Destination

**Full Back Vest**

| Size | Fits Coat Size(s) |
|------|-------------------|
| S    | 18 - 38           |
| M    | 39 - 42           |
| L    | 43 - 44           |
| XL   | 46 - 48           |
| 2XL  | 50 - 52           |
| 3XL  | 54 - 56           |

**Open Back Vest**

|     |         |
|-----|---------|
| BS  | 3 - 10  |
| BL  | 12 - 16 |
| 4XL | 56+     |

**Available in:**

- Vest
- Windsor Tie
- Bow Tie
- Pocket Square



Vest #M246  
Windsor Tie #F246  
Bow Tie #S246  
Pocket Square #H246



Vest #M247  
Windsor Tie #F247  
Bow Tie #S247  
Pocket Square #H247



Vest #M248  
Windsor Tie #F248  
Bow Tie #S248  
Pocket Square #H248



# Metallics

**Full Back Vest**

| Size | Fits Coat Size(s) |
|------|-------------------|
| S    | 18 - 38           |
| M    | 39 - 42           |
| L    | 43 - 44           |
| XL   | 46 - 48           |
| 2XL  | 50 - 52           |
| 3XL  | 54 - 56           |

**Open Back Vest**

|     |         |
|-----|---------|
| BS  | 3 - 6   |
| BM  | 7 - 12  |
| BL  | 14 - 16 |
| 4XL | 58+     |

**Available in:**

- Vests
- Bow Ties
- Windsor Ties
- Pocket Squares



**Silver Metallic**  
Vest #V811  
Bow Tie #B811  
Pocket Square #H811



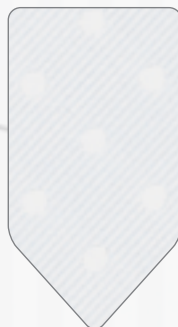
**Gold Metallic**  
Vest #V819  
Bow Tie #B819  
Pocket Square #H819



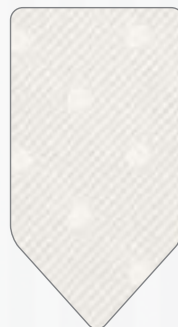
# Allure Dot

**Available in:**

- Windsor Tie
- Bow Tie
- Pocket Square



**White**  
Windsor Tie #F840  
Bow Tie #B840  
Pocket Square #H840



**Diamond White**  
Windsor Tie #F849  
Bow Tie #B849  
Pocket Square #H849



**Black**  
Windsor Tie #F842  
Bow Tie #B842  
Pocket Square #H842



**Charcoal**  
Windsor Tie #F841  
Bow Tie #B841  
Pocket Square #H841



**Slate**  
Windsor Tie #F853  
Bow Tie #B853  
Pocket Square #H853



**Blush**  
Windsor Tie #F854  
Bow Tie #B854  
Pocket Square #H854



**Ferrari Red**  
Windsor Tie #F856  
Bow Tie #B856  
Pocket Square #H856



**Wine**  
Windsor Tie #F846  
Bow Tie #B846  
Pocket Square #H846



**Plum**  
Windsor Tie #F847  
Bow Tie #B847  
Pocket Square #H847



**Royal**  
Windsor Tie #F843  
Bow Tie #B843  
Pocket Square #H843

*Pink* represents friendship, affection, harmony, inner peace, and approachability.



**Colby - Rose Gold**  
Windsor #F742  
Bow Tie #B742  
Pocket Square #H742



**Colby - Blush**  
Windsor #F704  
Bow Tie #B704  
Pocket Square #H704



**Allure Dot - Blush**  
Windsor #F854  
Bow Tie #B854  
Pocket Square #H854



**Simply Solid - Blush**  
Windsor #F304  
Pocket Square #H304



**Satin - Paradise Pink**  
Vest #V504  
Windsor #F504  
Bow Tie #B504  
Pocket Square #H504



**Satin - BL Pink**  
Vest #V514  
Windsor #F514  
Bow Tie #B514  
Pocket Square #H514



PHOTOS BY:  
**JON HENESSEE PHOTOGRAPHY**



**Colby - Quartz**  
Windsor #F715  
Bow Tie #B715  
Pocket Square #H715



**Simply Solid - Quartz**  
Windsor #F315  
Pocket Square #H315



**Satin - Quartz**  
Vest #V615  
Windsor #F615  
Bow Tie #B615  
Pocket Square #H615



**Satin - Winter Melon**  
Vest #V697  
Windsor #F697  
Bow Tie #B697  
Pocket Square #H697



**Colby - AZ Dusty Rose**  
Windsor #F714  
Bow Tie #B714  
Pocket Square #H714



**Rosewood - Satin**  
Vest #V544  
Windsor #F544  
Bow Tie #B544  
Pocket Square #H544



**Simply Solid - Sunset**  
Windsor #F306  
Pocket Square #H306



**Satin - Shrimp Toast**  
Vest #V604  
Windsor #F604  
Bow Tie #B604  
Pocket Square #H604



**Allure Dot - Ferrari Red**  
Windsor #F856  
Bow Tie #B856  
Pocket Square #H856



**Satin - Capri Red**  
Vest #V506  
Windsor #F506  
Bow Tie #B506  
Pocket Square #H506



**Ombre Ruby Red**  
Windsor #T429  
PS n/a (use H506)



**Paisley Ruby Red**  
Windsor #FP29



**Solid Ruby Red**  
Windsor #FS29



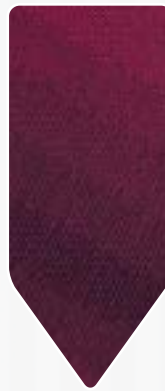
**Stripe Ruby Red**  
Windsor #F429



**Portofino - Ruby Red**  
Vest #M429  
Bow Tie #S429  
PS n/a (use H506)



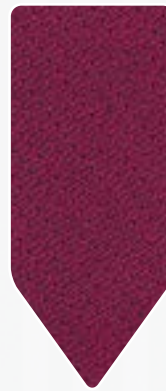
*Red* represents joy, passion, sensitivity and love.



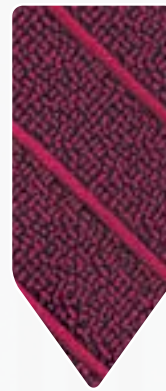
**Ombre Passion**  
Windsor #T455  
Pocket Sq. #HT55



**Paisley Passion**  
Windsor #FP55



**Solid Passion**  
Windsor #FS55



**Stripe Passion**  
Windsor #F455



**Portofino - Passion**  
Vest #M455  
Bow Tie #S455  
Pocket Square #H455



**Simply Solid - Merlot (Solid)**  
Windsor #W366  
Pocket Square #HS66



**Simply Solid - Merlot (Stripe)**  
Windsor #F366  
Pocket Square #H366



**Satin - Fino Claret**  
Vest #V526  
Windsor #F526  
Bow Tie #B526  
Pocket Square #H526



**Ombre Apple**  
Windsor #T426  
Pocket Sq. #HT26



**Paisley Apple**  
Windsor #FP26



**Solid Apple**  
Windsor #FS26



**Stripe Apple**  
Windsor #F426



**Portofino - Apple**  
Vest #M426  
Bow Tie #S426  
Pocket Square #H426



**Colby - Apple**  
Windsor #F726  
Bow Tie #B726  
Pocket Square #H726



**Allure Dot - Wine**  
Windsor #F846  
Bow Tie #B846  
Pocket Square #H846



**Satin - Wine**  
Vest #V684  
Windsor #F684  
Bow Tie #B684  
Pocket Square #H684



**Ombre Wine**  
Windsor #T466  
Pocket Sq. n/a



**Paisley Wine**  
Windsor #FP66



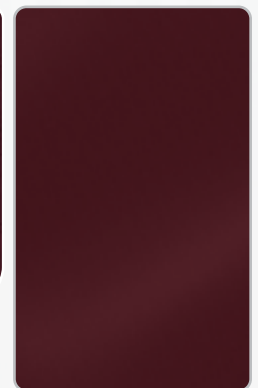
**Wine - Portofino**  
Vest #M466  
Bow Tie #S466  
PS n/a (use H636)



**Allure Floral - Burgundy**  
Windsor #F866  
Bow Tie #B866  
Pocket Square #H866



**Colby - Burgundy**  
Windsor #F736  
Bow Tie #B736  
Pocket Square #H736



**Fino Burgundy - Satin**  
Vest #V636  
Windsor #F636  
Bow Tie #B636  
Pocket Square #H636



*Coral* encourages great communication and conversation



**Satin - Porto Peach**  
Vest #V546  
Windsor #F546  
Bow Tie #B546  
Pocket Square #H546



**Simply Solid - Salmon**  
Windsor #F314  
Pocket Square #H314



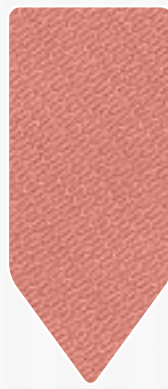
**Satin - Capri Peach**  
Vest #V536  
Windsor #F536  
Bow Tie #B536  
Pocket Square #H536



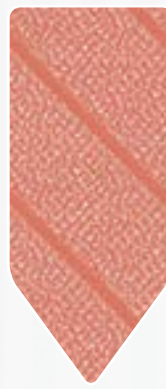
**Ombre Terra Cotta**  
Windsor #T420  
Pocket Sq. #HT20



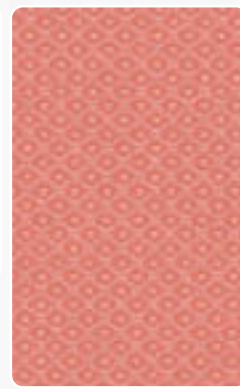
**Paisley Terra Cotta**  
Windsor #FP20



**Solid Terra Cotta**  
Windsor #FS20



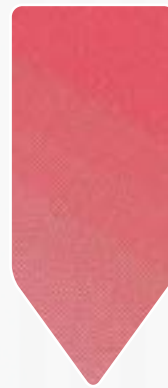
**Stripe Terra Cotta**  
Windsor #F420



**Portofino - Terra Cotta**  
Vest #M420  
Bow Tie #S420  
Pocket Square #H420



**Satin - Fiesta Coral**  
Vest #V584  
Windsor #F584  
Bow Tie #B584  
Pocket Square #H584



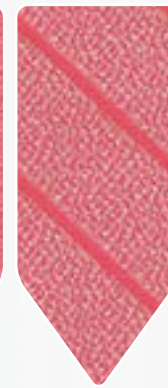
**Ombre Flamingo**  
Windsor #T434  
Pocket Sq. #HT34



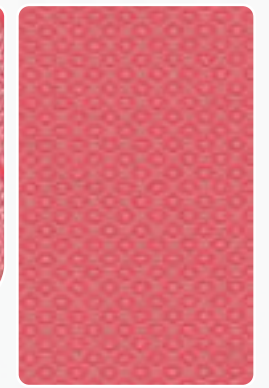
**Paisley Flamingo**  
Windsor #FP34



**Solid Flamingo**  
Windsor #FS34



**Stripe Flamingo**  
Windsor #F434



**Portofino - Flamingo**  
Vest #M434  
Bow Tie #S434  
Pocket Square #H434



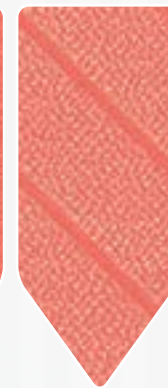
**Ombre Palm Beach Coral**  
Windsor #T486  
Pocket Sq. #HT86



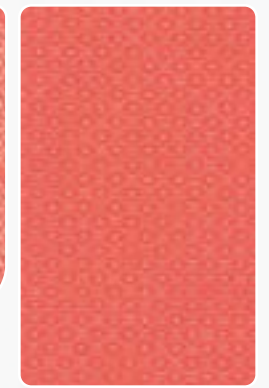
**Paisley Palm Beach Coral**  
Windsor #FP86



**Solid Palm Beach Coral**  
Windsor #FS86



**Stripe Palm Beach Coral**  
Windsor #F486



**Portofino - Palm Beach Coral**  
Vest #M486  
Bow Tie #S486  
Pocket Square #H486

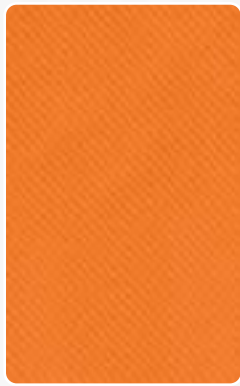
PHOTOS BY:  
**LINDSEY COLE PHOTOGRAPHY**  
@lindseycolephotography



*Orange corresponds to creativity, desire, warmth, ambition and generosity*



**Simply Solid - Neon Orange**  
Windsor #F316  
Pocket Square #H316



**Simply Solid - Neon Orange**  
Vest #V316  
Bow Tie #S316  
Windsor Tie #W316  
Pocket Square #HS16



**Ombre Tangerine**  
Windsor #T475  
Pocket Sq. #HT75



**Paisley Tangerine**  
Windsor #FP75



**Solid Tangerine**  
Windsor #FS75



**Stripe Tangerine**  
Windsor #F475



**Portofino - Tangerine**  
Vest #M475  
Bow Tie #S475  
Pocket Square #H475



**Satin - Sun Coral**  
Vest #V576  
Windsor #F576  
Bow Tie #B576  
Pocket Square #H576



**Fino Copper**  
Vest Style #V626  
Windsor Tie #F626  
Bow Tie #B626  
Pocket Square #H626



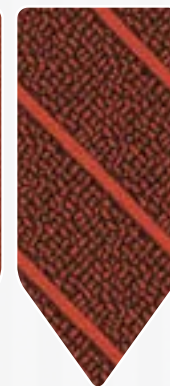
**Ombre Persimmon**  
Windsor #T416  
Pocket Sq. #HT16



**Paisley Persimmon**  
Windsor #FP16



**Solid Persimmon**  
Windsor #FS16



**Stripe Persimmon**  
Windsor #F416



**Portofino - Persimmon**  
Vest #M416  
Bow Tie #S416  
Pocket Square #H416



**Colby - Cinnamon**  
Windsor #F725  
Bow Tie #B725  
Pocket Square #H725



**Ombre Cinnamon**  
Windsor #T406  
Pocket Sq. #HT06



**Paisley Cinnamon**  
Windsor #FP06



**Solid Cinnamon**  
Windsor #FS06



**Stripe Cinnamon**  
Windsor #F406



**Portofino - Cinnamon**  
Vest #M406  
Bow Tie #S406  
Pocket Square #H406



**Colby - Cognac**  
Windsor #F705  
Bow Tie #B705  
Pocket Square #H705



PHOTOS BY:  
DEGROOT FILM CO.  
@degrootfilmco



*Green is associated with ambition, nature, good luck, success and generosity*



**Colby - Meadow**  
Windsor #F758  
Bow Tie #B758  
Pocket Square #H758



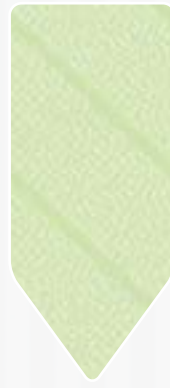
**Ombre Honeydew**  
Windsor #T465  
Pocket Sq. #HT65



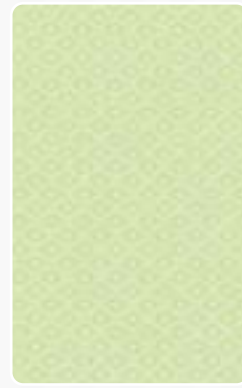
**Paisley Honeydew**  
Windsor #FP65



**Solid Honeydew**  
Windsor #FS65



**Stripe Honeydew**  
Windsor #F465



**Portofino - Honeydew**  
Vest #M465  
Bow Tie #S465  
Pocket Square #H465



**Simply Solid - Neon Lime**  
Windsor #F318  
Pocket Square #H318



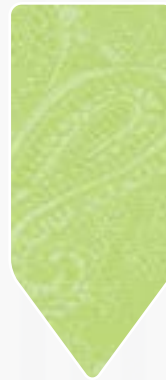
**Simply Solid - Neon Lime**  
Vest #V318  
Bow Tie #S318  
Windsor Tie #W318  
Pocket Square #HS18



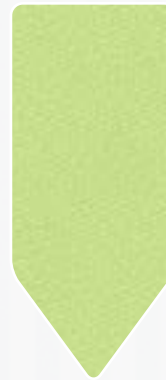
PHOTOS BY:  
**KLEM STUDIO PHOTOGRAPHY**  
@klemstudiosphotography



**Ombre Lime**  
Windsor #T449  
Pocket Sq. #HT49



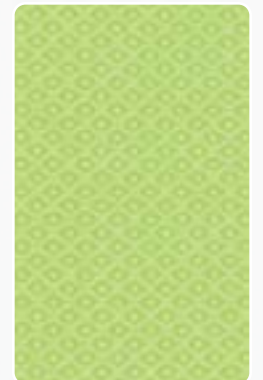
**Paisley Lime**  
Windsor #FP49



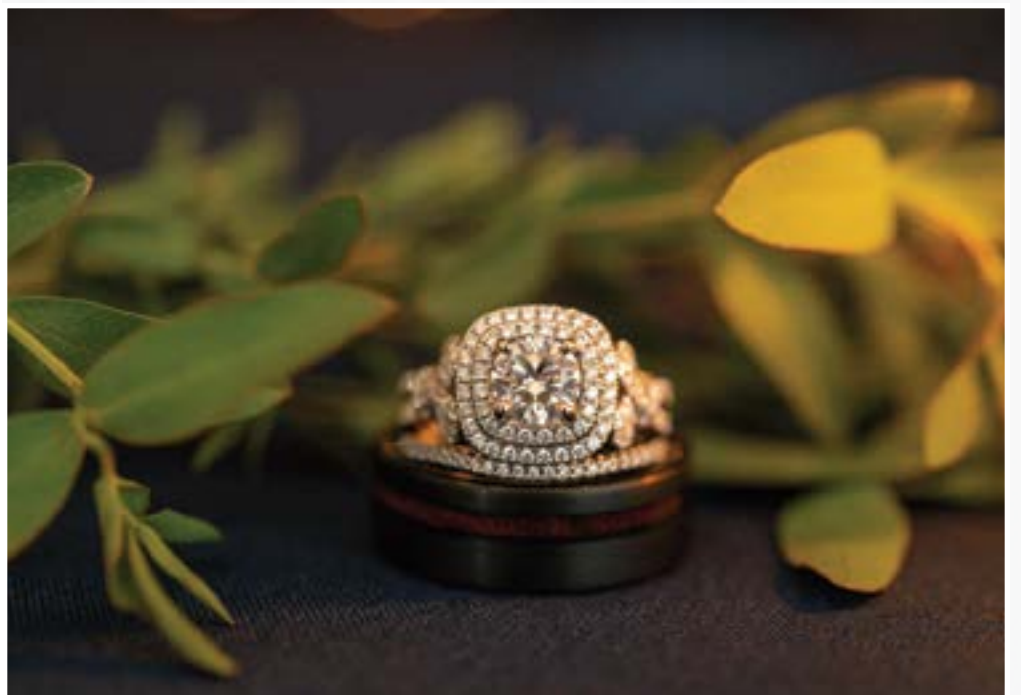
**Solid Lime**  
Windsor #FS49



**Stripe Lime**  
Windsor #F449



**Portofino - Lime**  
Vest #M449  
Bow Tie #S449  
Pocket Square #H449





*Olive is the traditional color of peace and adventure*



**Satin - Rio Lime**  
Vest #V548  
Windsor #F548  
Bow Tie #B548  
Pocket Square #H548



**Satin - Kiwi**  
Vest #V568  
Windsor #F568  
Bow Tie #B568  
Pocket Square #H568



**Satin - Capri Green**  
Vest #V588  
Windsor #F588  
Bow Tie #B588  
Pocket Square #H588



**Ombre Kelly Green**  
Windsor #T432  
Pocket Sq. #HT32



**Paisley Kelly Green**  
Windsor #FP32



**Solid Kelly Green**  
Windsor #FS32



**Stripe Kelly Green**  
Windsor #F432



**Portofino - Kelly Green**  
Vest #M432  
Bow Tie #S432  
Pocket Square #H432



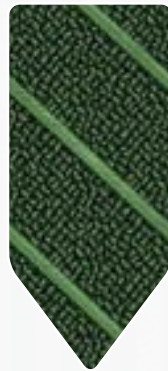
**Ombre Clover**  
Windsor #T418  
Pocket Sq. #HT18



**Paisley Clover**  
Windsor #FP18



**Solid Clover**  
Windsor #FS18



**Stripe Clover**  
Windsor #F418



**Portofino - Clover**  
Vest #M418  
Bow Tie #S418  
Pocket Square #H418



**Satin - Celadon**  
Vest #V608  
Windsor #F608  
Bow Tie #B608  
Pocket Square #H608



**Satin - Light Olive**  
Vest #V558  
Windsor #F558  
Bow Tie #B558  
Pocket Square #H558



**Satin - Clover**  
Vest #V578  
Windsor #F578  
Bow Tie #B578  
Pocket Square #H578



**Simply Solid - Moss**  
Windsor #F388  
Pocket Square #H388



*Sage* represents experience, judgment and wisdom



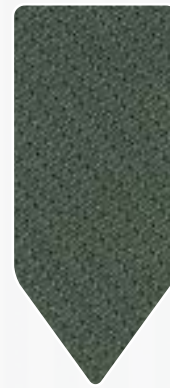
**Camouflage - Mossy Oak**  
 Vest #V245  
 Windsor #F245  
 Bow Tie #S245  
 Pocket Square #H245



**Ombre Sage**  
 Windsor #T482  
 Pocket Sq. #HT82



**Paisley Sage**  
 Windsor #FP82



**Solid Sage**  
 Windsor #FS82



**Stripe Sage**  
 Windsor #F482



**Portofino - Sage**  
 Vest #M482  
 Bow Tie #S482  
 Pocket Square #H482



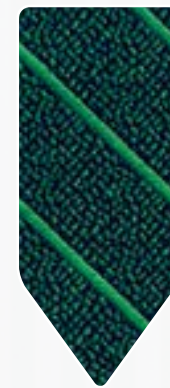
**Ombre Jade Green**  
 Windsor #T451  
 Pocket Sq. #HT51



**Paisley Jade Green**  
 Windsor #FP51



**Solid Jade Green**  
 Windsor #FS51



**Stripe Jade Green**  
 Windsor #F451



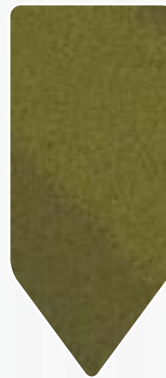
**Portofino - Jade Green**  
 Vest #M451  
 Bow Tie #S451  
 Pocket Square #H451



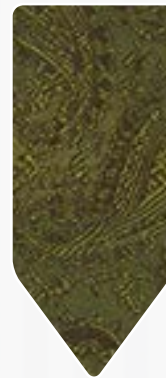
PHOTOS BY:  
**KLEM STUDIO PHOTOGRAPHY**  
 @klemstudiosphotography



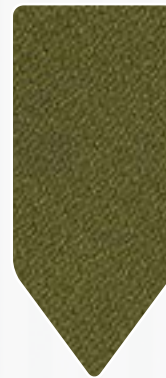
*Green is associated with ambition, nature, good luck, success and generosity*



**Ombre Olive**  
Windsor #T462  
Pocket Sq. #HT62



**Paisley Olive**  
Windsor #FP62



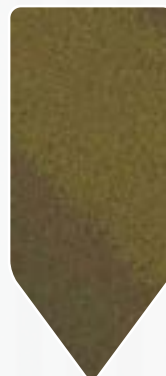
**Solid Olive**  
Windsor #FS62



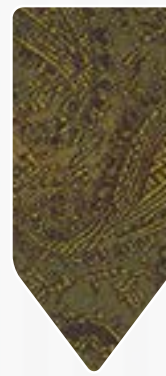
**Stripe Olive**  
Windsor #F462



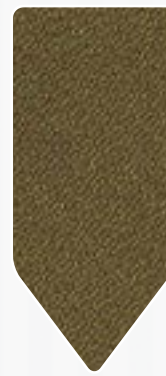
**Portofino - Olive**  
Vest #M462  
Bow Tie #S462  
Pocket Square #H462



**Ombre Fern**  
Windsor #T438  
Pocket Sq. #HT38



**Paisley Fern**  
Windsor #FP38



**Solid Fern**  
Windsor #FS38



**Stripe Fern**  
Windsor #F438



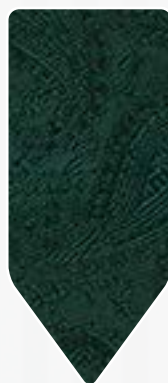
**Portofino - Fern**  
Vest #M438  
Bow Tie #S438  
Pocket Square #H438



**Simply Solid - Tarragon**  
Windsor #F348  
Pocket Square #H348



**Ombre Holly**  
Windsor #T452  
Pocket Sq. #HT52



**Paisley Holly**  
Windsor #FP52



**Solid Holly**  
Windsor #FS52



**Stripe Holly**  
Windsor #F452



**Portofino - Holly**  
Vest #M452  
Bow Tie #S452  
Pocket Square #H452



**Colby - Hunter**  
Windsor #F748  
Bow Tie #B748  
Pocket Square #H748



**Satin - Bali Hunter**  
Vest #V648  
Windsor #F648  
Bow Tie #B648  
Pocket Square #H648



**Colby - Forest**  
Windsor #F738  
Bow Tie #B738  
Pocket Square #H738



*Turquoise* represents friendship, communication and love



PHOTOS BY:  
NICOLE MIRO PHOTOGRAPHY



**Satin - Riviera Turquoise**  
Vest #V543  
Windsor #F543  
Bow Tie #B543  
Pocket Square #H543



**Ombre Turquoise**  
Windsor #T460  
Pocket Sq. #HT60



**Paisley Turquoise**  
Windsor #FP60



**Solid Turquoise**  
Windsor #FS60



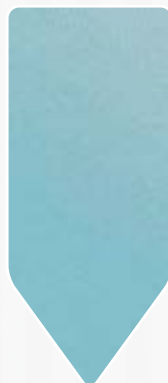
**Stripe Turquoise**  
Windsor #F460



**Portofino - Turquoise**  
Vest #M460  
Bow Tie #S460  
Pocket Square #H460



**Satin Premium Turquoise**  
Vest #V573  
Windsor #F573  
Bow Tie #B573  
Pocket Square #H573



**Ombre Pool**  
Windsor #T411  
Pocket Sq. #HT11



**Paisley Pool**  
Windsor #FP11



**Solid Pool**  
Windsor #FS11



**Stripe Pool**  
Windsor #F411



**Portofino - Pool**  
Vest #M411  
Bow Tie #S411  
Pocket Square #H411



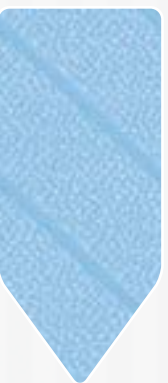
**Ombre Sky Blue**  
Windsor #T403  
Pocket Sq. #HT03



**Paisley Sky Blue**  
Windsor #FP03



**Solid Sky Blue**  
Windsor #FS03



**Stripe Sky Blue**  
Windsor #F403



**Portofino - Sky Blue**  
Vest #M403  
Bow Tie #S403  
Pocket Square #H403



**Ombre Blue Ice**  
Windsor #T443  
Pocket Sq. #HT43



**Paisley Blue Ice**  
Windsor #FP43



**Solid Blue Ice**  
Windsor #FS43



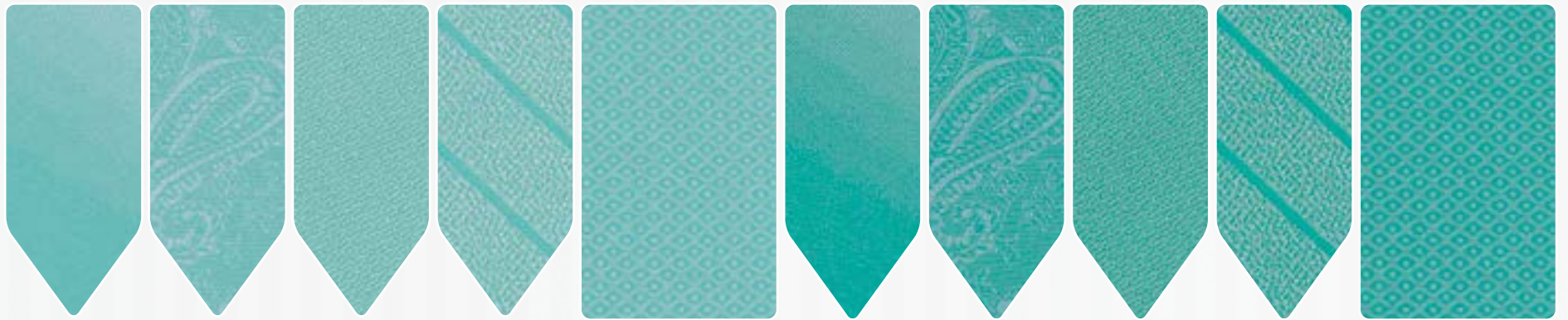
**Stripe Blue Ice**  
Windsor #F443



**Portofino - Blue Ice**  
Vest #M443  
Bow Tie #S443  
Pocket Square #H443



*Aqua is refreshing, uplifting, creative and light-hearted*



**Ombre Aqua**  
Windsor #T408  
Pocket Sq. #HT08

**Paisley Aqua**  
Windsor #FP08

**Solid Aqua**  
Windsor #FS08

**Stripe Aqua**  
Windsor #F408

**Portofino - Aqua**  
Vest #M408  
Bow Tie #S408  
Pocket Square #H408

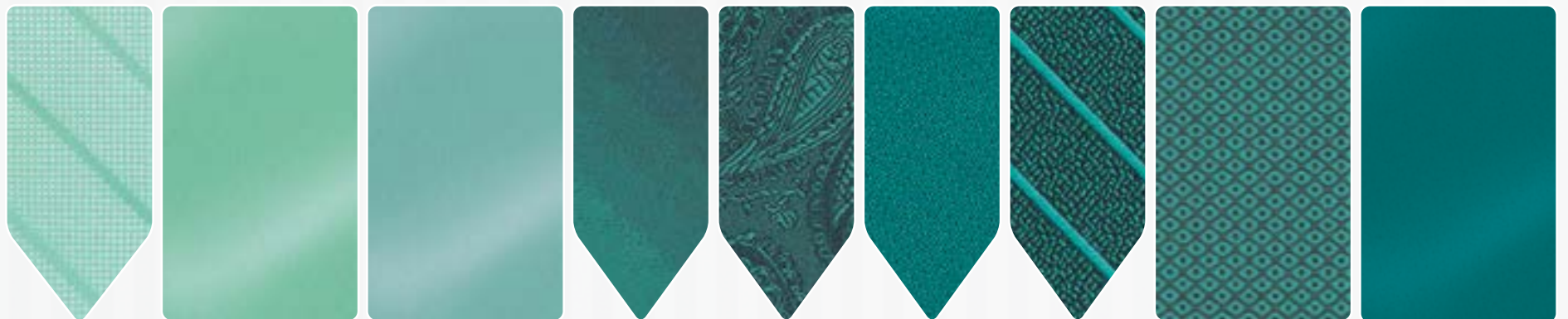
**Ombre Mermaid**  
Windsor #T461  
Pocket Sq. #HT61

**Paisley Mermaid**  
Windsor #FP61

**Solid Mermaid**  
Windsor #FS61

**Stripe Mermaid**  
Windsor #F461

**Portofino - Mermaid**  
Vest #M461  
Bow Tie #S461  
Pocket Square #H461



**Simply Solid - Mint**  
Windsor #F308  
Pocket Square #H308

**Satin - Baja Aqua**  
Vest #V678  
Windsor #F678  
Bow Tie #B678  
Pocket Square #H678

**Satin - Fino Jade**  
Vest #V688  
Windsor #F688  
Bow Tie #B688  
Pocket Square #H688

**Ombre Peacock**  
Windsor #T492  
Pocket Sq. #HT92

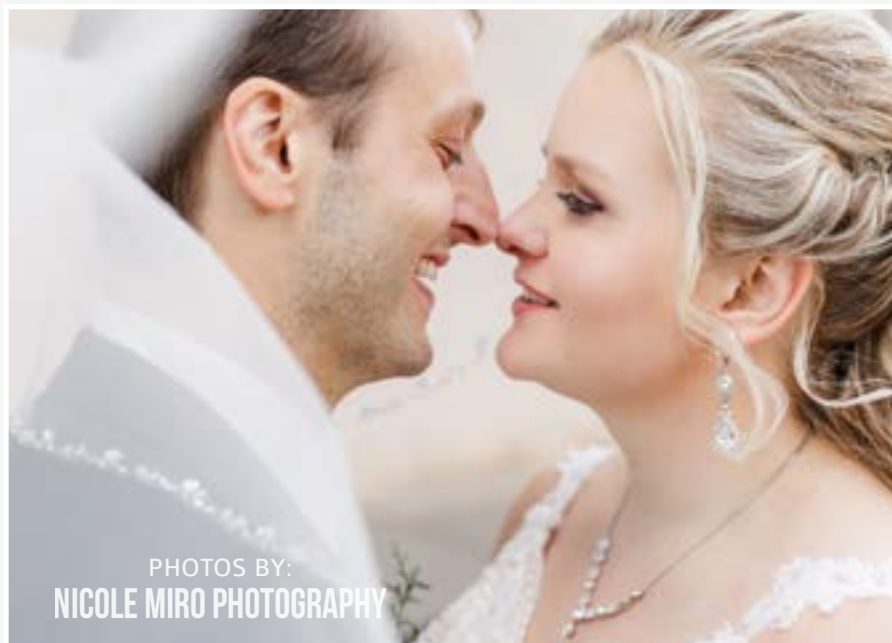
**Paisley Peacock**  
Windsor #FP92

**Solid Peacock**  
Windsor #FS92

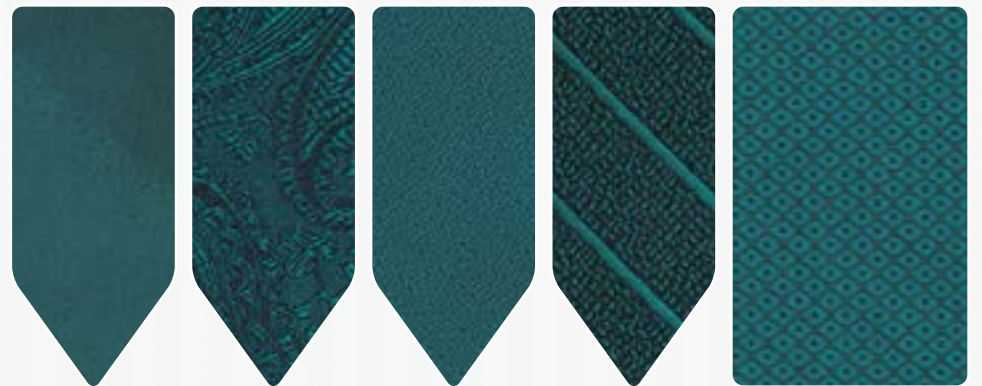
**Stripe Peacock**  
Windsor #F492

**Portofino - Peacock**  
Vest #M492  
Bow Tie #S492  
Pocket Square #H492

**Satin - Night Teal**  
Vest #V552  
Windsor #F552  
Bow Tie #B552  
Pocket Square #H552



PHOTOS BY:  
NICOLE MIRO PHOTOGRAPHY



**Ombre Oasis**  
Windsor #T421  
Pocket Sq. #HT21

**Paisley Oasis**  
Windsor #FP21

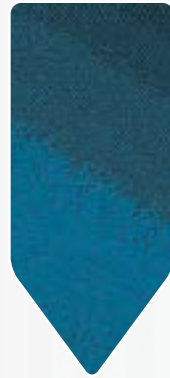
**Solid Oasis**  
Windsor #FS21

**Stripe Oasis**  
Windsor #F421

**Portofino - Oasis**  
Vest #M421  
Bow Tie #S421  
Pocket Square #H421



*Light Blue* signifies health, healing, tranquility, security and trust



**Ombre Aqua Marine**  
Windsor #T422  
PS n/a (use #H422)



**Paisley Aqua Marine**  
Windsor #FP22



**Solid Aqua Marine**  
Windsor #FS22



**Stripe Aqua Marine**  
Windsor #F422



**Portofino - Aqua Marine**  
Vest #M422  
Bow Tie #S422  
Pocket Square #H422



**Satin - Ocean**  
Vest #V653  
Windsor #F653  
Bow Tie #B653  
Pocket Square #H653



**Destination - Blue/White**  
Vest #M247  
Windsor #F247  
Bow Tie #S247  
Pocket Square #H247



**Destination - Blue/Black**  
Vest #M248  
Windsor #F248  
Bow Tie #S248  
Pocket Square #H248



**Satin - PV Royal**  
Vest #V613  
Windsor #F613  
Bow Tie #B613  
Pocket Square #H613



**Ombre Marine Blue**  
Windsor #T439  
Pocket Sq. #HT39



**Paisley Marine Blue**  
Windsor #FP39



**Solid Marine Blue**  
Windsor #FS39



**Stripe Marine Blue**  
Windsor #F439



**Portofino - Marine Blue**  
Vest #M439  
Bow Tie #S439  
Pocket Square #H439



**Colby - Cobalt**  
Windsor #F763  
Bow Tie #B763  
Pocket Square #H763



**Allure Floral - Cobalt**  
Windsor #F863  
Bow Tie #B863  
Pocket Square #H863



**Allure Dot - Royal**  
Windsor #F843  
Bow Tie #B843  
Pocket Square #H843



**Ombre Royal Blue**  
Windsor #T413  
Pocket Sq. #HT13



**Paisley Royal Blue**  
Windsor #FP13



**Solid Royal Blue**  
Windsor #FS13



**Stripe Royal Blue**  
Windsor #F413



**Portofino - Royal Blue**  
Vest #M413  
Bow Tie #S413  
Pocket Square #H413



*Periwinkle* inspires creativity, freedom and peace



**Colby - Desert Blue**  
Windsor #F723  
Bow Tie #B723  
Pocket Square #H723



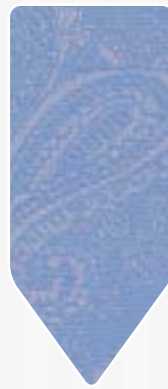
**Simply Solid - Desert Blue**  
Windsor #F323  
Pocket Square #H323



**Satin - Desert Blue**  
Vest #V523  
Windsor #F523  
Bow Tie #B523  
Pocket Square #H523



**Ombre Cornflower**  
Windsor #T423  
Pocket Sq. #HT23



**Paisley Cornflower**  
Windsor #FP23



**Solid Cornflower**  
Windsor #F523



**Stripe Cornflower**  
Windsor #F423



**Portofino - Cornflower**  
Vest #M423  
Bow Tie #S423  
Pocket Square #H423



**Colby - Serene**  
Windsor #F733  
Bow Tie #B733  
Pocket Square #H733



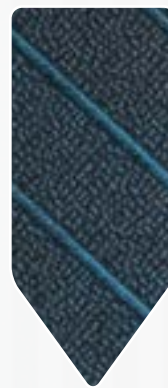
**Ombre Serene**  
Windsor #T433  
Pocket Sq. #HT33



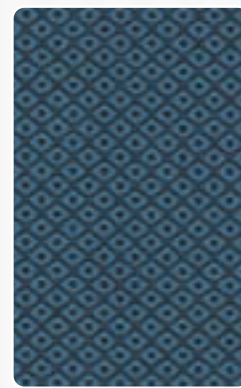
**Paisley Serene**  
Windsor #FP33



**Solid Serene**  
Windsor #FS33



**Stripe Serene**  
Windsor #F433



**Portofino - Serene**  
Vest #M433  
Bow Tie #S433  
Pocket Square #H433



**Allure Dot - Slate**  
Windsor #F853  
Bow Tie #B853  
Pocket Square #H853



**Simply Solid - Steel Blue**  
Windsor #W353  
Bow Tie #S353  
Pocket Square #H353



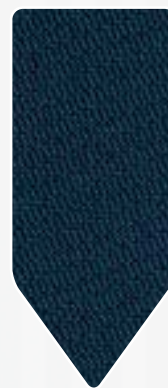
**Colby - Dark Navy**  
Windsor #F724  
Bow Ties #B724  
Pocket Square #H724



**Ombre Dark Peacock**  
Windsor #T446  
Pocket Sq. #HT46



**Paisley Dark Peacock**  
Windsor #FP46



**Solid Dark Peacock**  
Windsor #FS46



**Stripe Dark Peacock**  
Windsor #F446



**Portofino - Dark Peacock**  
Vest #M446  
Bow Tie #S446  
Pocket Square #H446



**FCGI - Navy**  
Windsor #F243  
Bow Tie #B243  
Pocket Square #H243



**Satin - PV Marine**  
Vest #V663  
Windsor #F663  
Bow Tie #B663  
Pocket Square #H663



**Simply Solid - Marine**  
Windsor #F383  
Pocket Square #H383

*Dark Blue* represents knowledge, power, integrity and confidence



*Purple symbolizes power, nobility and luxury*



**Ombre Purple**  
Windsor #T407  
PS n/a (use #H607)



**Paisley Purple**  
Windsor #FP07



**Solid Purple**  
Windsor #FS07



**Stripe Purple**  
Windsor #F407



**Portofino - Purple**  
Vest #M407  
Bow Tie #S407  
Pocket Square #H407



**Simply Solid - Purple Storm**  
Windsor #F307  
Pocket Square #H307



**Satin - Majestic Purple**  
Vest #V617  
Windsor #F617  
Bow Tie #B617  
Pocket Square #H617



**Satin - Lapis**  
Vest #V637  
Windsor #F637  
Bow Tie #B637  
Pocket Square #H637



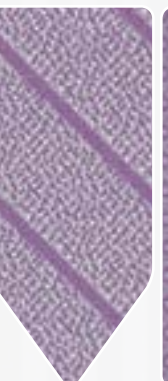
**Ombre Wisteria**  
Windsor #T485  
Pocket Sq. #HT85



**Paisley Wisteria**  
Windsor #FP85



**Solid Wisteria**  
Windsor #FS85



**Stripe Wisteria**  
Windsor #F485



**Portofino - Wisteria**  
Vest #M485  
Bow Tie #S485  
Pocket Square #H485



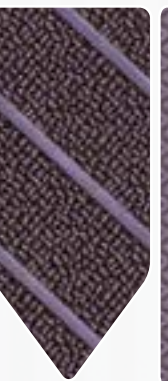
**Ombre Victorian Lilac**  
Windsor #T417  
Pocket Sq. #HT17



**Paisley Victorian Lilac**  
Windsor #FP17



**Solid Victorian Lilac**  
Windsor #FS17



**Stripe Victorian Lilac**  
Windsor #F417



**Portofino - Victorian Lilac**  
Vest #M417  
Bow Tie #S417  
Pocket Square #H417



**Satin - Pretty Lilac**  
Vest #V507  
Windsor #F507  
Bow Tie #B507  
Pocket Square #H507



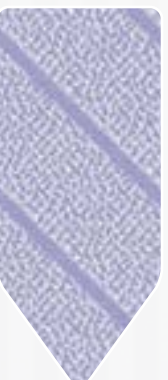
**Ombre Jasmine**  
Windsor #T450  
Pocket Sq. #HT50



**Paisley Jasmine**  
Windsor #FP50



**Solid Jasmine**  
Windsor #FS50



**Stripe Jasmine**  
Windsor #F450



**Portofino - Jasmine**  
Vest #M450  
Bow Tie #S450  
Pocket Square #H450



**Satin - Porto Violet**  
Vest #V567  
Windsor #F567  
Bow Tie #B567  
Pocket Square #H567



*Purple* represents ambition, wisdom and spirituality





*Fuchsia* inspires confidence, assurance, maturity and love



**Ombre Azalea**  
Windsor #T444  
Pocket Sq. #HT44

**Paisley Azalea**  
Windsor #FP44

**Solid Azalea**  
Windsor #FS44

**Stripe Azalea**  
Windsor #F444

**Portofino - Azalea**  
Vest #M444  
Bow Tie #S444  
Pocket Square #H444

**Ombre Fuchsia**  
Windsor #T404  
Pocket Sq. #HT04

**Paisley Fuchsia**  
Windsor #FP04

**Solid Fuchsia**  
Windsor #FS04

**Stripe Fuchsia**  
Windsor #F404

**Portofino - Fuchsia**  
Vest #M404  
Bow Tie #S404  
Pocket Square #H404



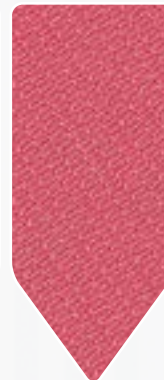
**Satin - Watermelon**  
Vest #V634  
Windsor #F634  
Bow Tie #B634  
Pocket Square #H634



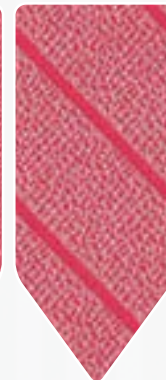
**Ombre Watermelon**  
Windsor #T414  
Pocket Sq. #HT14



**Paisley Watermelon**  
Windsor #FP14



**Solid Watermelon**  
Windsor #FS14



**Stripe Watermelon**  
Windsor #F414



**Portofino - Watermelon**  
Vest #M414  
Bow Tie #S414  
Pocket Square #H414



PHOTOS BY:  
**REMINISCE PHOTOGRAPHY**



*Violet* inspires compassion, kindness and a love of humanity



**Satin - PV Cerise**  
 Vest #V624  
 Windsor #F624  
 Bow Tie #B624  
 Pocket Square #H624



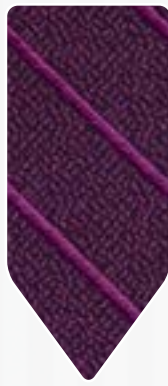
**Ombre Sangria**  
 Windsor #T473  
 Pocket Sq. #HT73



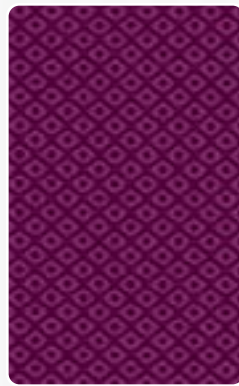
**Paisley Sangria**  
 Windsor #FP73



**Solid Sangria**  
 Windsor #FS73



**Stripe Sangria**  
 Windsor #F473



**Portofino - Sangria**  
 Vest #M473  
 Bow Tie #S473  
 Pocket Square #H473



**Simply Solid - Cassis**  
 Windsor #F317  
 Pocket Square #H317



**Satin - Fino Magenta**  
 Vest #V664  
 Windsor #F664  
 Bow Tie #B664  
 Pocket Square #H664



**Allure Dot - Plum**  
 Windsor #F847  
 Bow Tie #B847  
 Pocket Square #H847



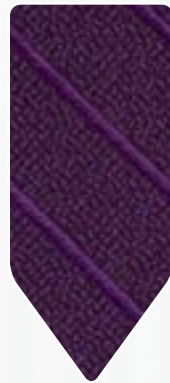
**Ombre Violet**  
 Windsor #T453  
 Pocket Sq. #HT53



**Paisley Violet**  
 Windsor #FP53



**Solid Violet**  
 Windsor #FS53



**Stripe Violet**  
 Windsor #F453



**Portofino - Violet**  
 Vest #M453  
 Bow Tie #S453  
 Pocket Square #H453



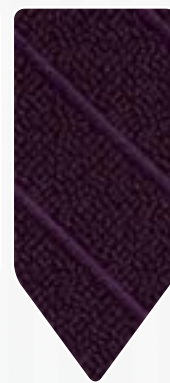
**Ombre Plum**  
 Windsor #T440  
 Pocket Sq. #HT40



**Paisley Plum**  
 Windsor #FP40



**Solid Plum**  
 Windsor #FS40



**Stripe Plum**  
 Windsor #F440



**Portofino - Plum**  
 Vest #M440  
 Bow Tie #S440  
 Pocket Square #H440



*White* is associated with light, goodness, innocence, perfection and purity



**Colby - White**  
Windsor #F700  
Bow Tie #B700  
Pocket Square #H700

**Ombre White**  
Windsor #T400  
Pocket Sq. #HT00

**Paisley White**  
Windsor #FP00

**Solid White**  
Windsor #FS00

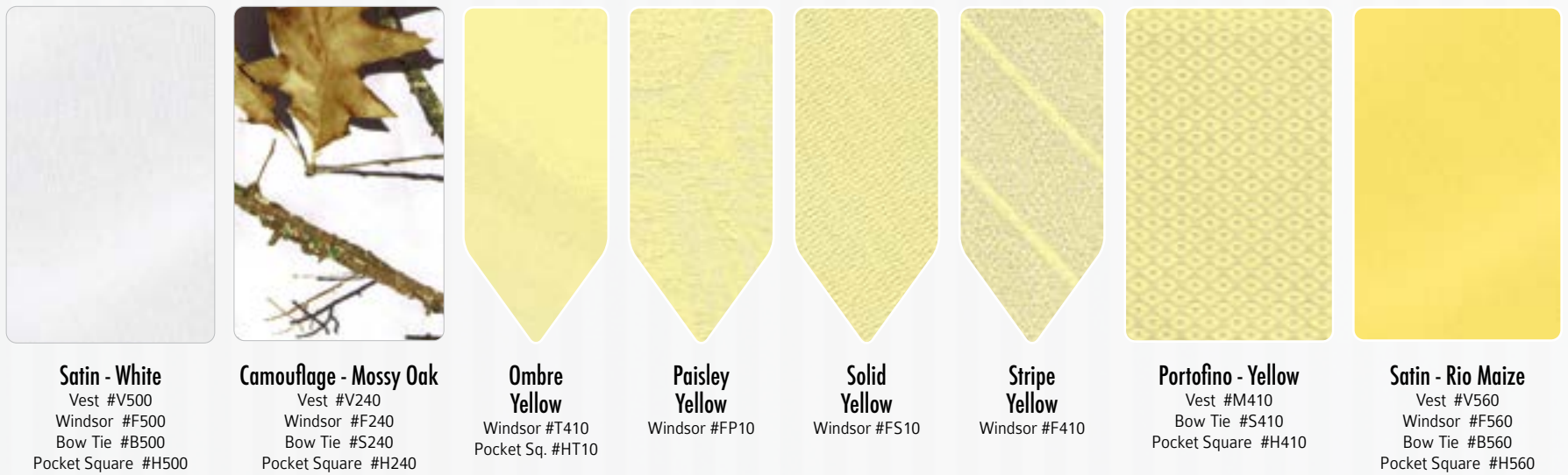
**Stripe White**  
Windsor #F400

**Portofino - White**  
Vest #M400  
Bow Tie #S400  
Pocket Square #H400

**Simply Solid - White**  
Windsor #F300  
Pocket Square #H300

**Allure Floral - White**  
Windsor #F860  
Bow Tie #B860  
Pocket Square #H860

**Allure Dot - White**  
Windsor #F840  
Bow Tie #B840  
Pocket Square #H840



**Satin - White**  
Vest #V500  
Windsor #F500  
Bow Tie #B500  
Pocket Square #H500

**Camouflage - Mossy Oak**  
Vest #V240  
Windsor #F240  
Bow Tie #S240  
Pocket Square #H240

**Ombre Yellow**  
Windsor #T410  
Pocket Sq. #HT10

**Paisley Yellow**  
Windsor #FP10

**Solid Yellow**  
Windsor #FS10

**Stripe Yellow**  
Windsor #F410

**Portofino - Yellow**  
Vest #M410  
Bow Tie #S410  
Pocket Square #H410

**Satin - Rio Maize**  
Vest #V560  
Windsor #F560  
Bow Tie #B560  
Pocket Square #H560



**Ombre Saffron**  
Windsor #T474  
Pocket Sq. #HT74

**Paisley Saffron**  
Windsor #FP74

**Solid Saffron**  
Windsor #FS74

**Stripe Saffron**  
Windsor #F474

**Portofino - Saffron**  
Vest #M474  
Bow Tie #S474  
Pocket Square #H474

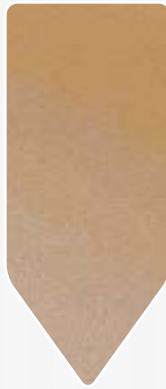
*Yellow* is associated with intellect, freshness, joy, optimism and youth



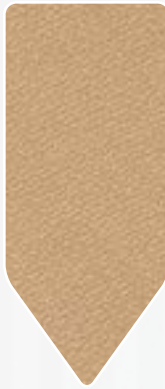
*Gold* represents power, good health, success and strength



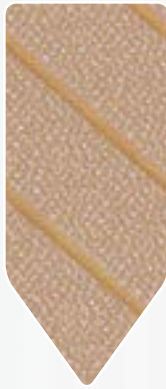
**Satin - Victorian Gold**  
 Vest #V530  
 Windsor #F530  
 Bow Tie #B530  
 Pocket Square #H530



**Ombre Golden**  
 Windsor #T442  
 Pocket Sq. #HT42



**Solid Golden**  
 Windsor #FS42



**Stripe Golden**  
 Windsor #F442



**Simply Solid - Golden**  
 Windsor #F389  
 Pocket Sq. #H389



**Portofino - Golden**  
 Vest #M442  
 Bow Tie #S442  
 Pocket Square #H442



**Vertical - Metallic Gold**  
 Vest #V819  
 Bow Tie #B819



PHOTOS BY:  
**KLEM STUDIO PHOTOGRAPHY**  
 @klemstudiosphotography



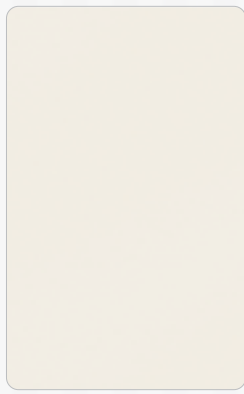
*Ivory* represents calm, quiet, pleasantness with a touch of luster



**Allure Floral -  
Diamond White**  
Windsor #F869  
Bow Tie #S869  
Pocket Square #H869



**Allure Dot - Ivory**  
Windsor #F849  
Bow Tie #B849  
Pocket Square #H849



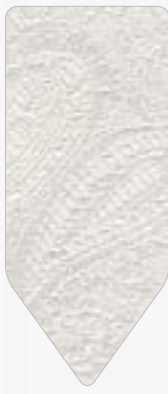
**Satin - Ivory**  
Vest #V509  
Windsor #F509  
Bow Tie #B509  
Pocket Square #H509



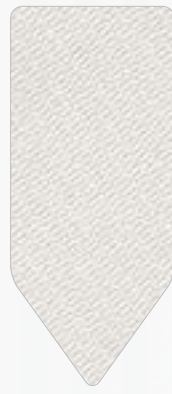
**Simply Solid -  
Diamond White**  
Windsor #F309  
Pocket Square #H309



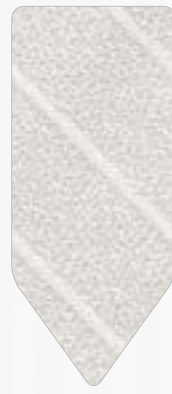
**Ombre  
Diamond White**  
Windsor #T409  
Pocket Sq. #HT09



**Paisley  
Diamond White**  
Windsor #FP09



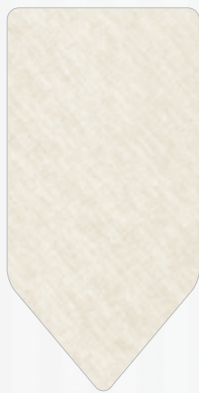
**Solid  
Diamond White**  
Windsor #F509



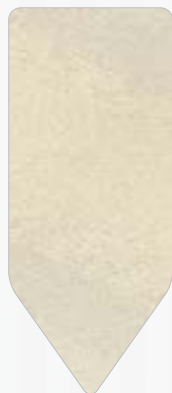
**Stripe  
Diamond White**  
Windsor #F409



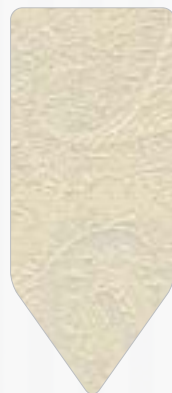
**Portofino - Diamond  
White**  
Vest #M409  
Bow Tie #S409  
Pocket Square #H409



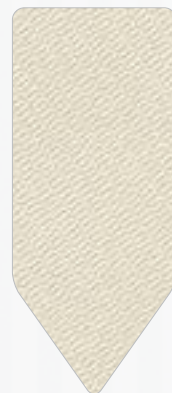
**Colby - Ivory**  
Windsor #F709  
Bow Tie #B709  
Pocket Square #H709



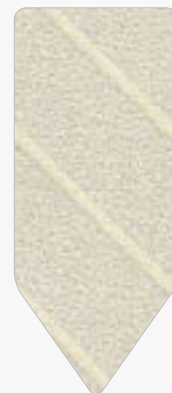
**Ombre  
Antique**  
Windsor #T419  
Pocket Sq. #HT19



**Paisley  
Antique**  
Windsor #FP19



**Solid  
Antique**  
Windsor #FS19



**Stripe  
Antique**  
Windsor #F419



**Portofino - Antique**  
Vest #M419  
Bow Tie #S419  
Pocket Square #H419



**David Major - Tan**  
Vest #V355  
Windsor #F355  
Bow Tie #B355  
Pocket Square #H355



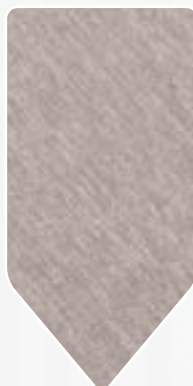
**Satin - Fino Cream**  
Vest #V505  
Windsor #F505  
Bow Tie #B505  
Pocket Square #H505



**Tweed - Beige**  
Vest #V109  
Windsor #F109  
Bow Tie #B109  
Pocket Square #H109



**Satin - Beige**  
Vest #V522  
Windsor #F522  
Bow Tie #B522  
Pocket Square #H522



**Colby - Portobello**  
Windsor #F722  
Bow Tie #B722  
Pocket Square #H722



**Allure Floral -  
Sandstone**  
Windsor #F865  
Bow Tie #B865  
Pocket Square #H865



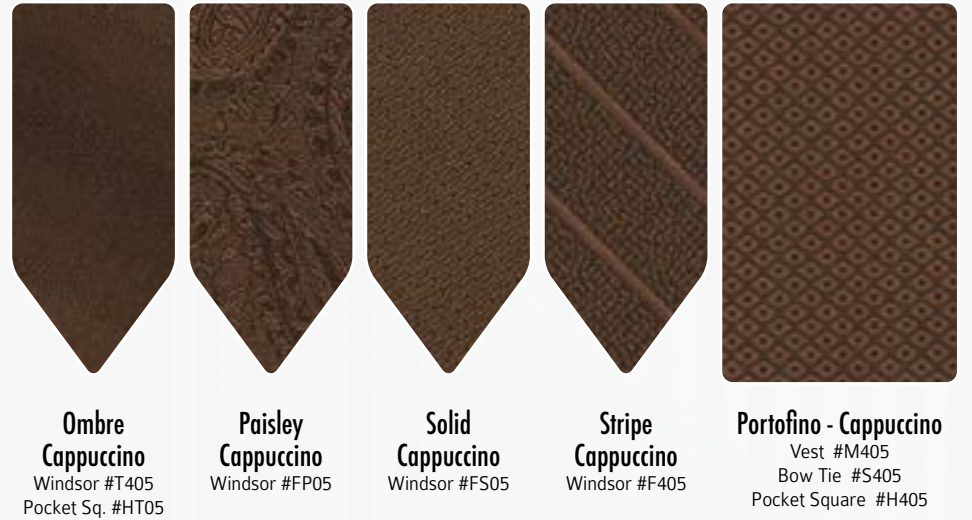
**Satin - Cappuccino**  
Vest #V525  
Windsor #F525  
Bow Tie #B525  
Pocket Square #H525



**Tweed - Tan**  
Vest #V105  
Windsor #F105  
Bow Tie #B105  
Pocket Square #H105



*Brown* suggests stability, simplicity, endurance, reliability and friendship





*Silver* represents glamour, sleekness, timeless, classic and elegance



**Colby - Platinum**  
Windsor #F701  
Bow Tie #B701  
Pocket Square #H701



**Vertical - Metallic Silver**  
Vest #V811  
Bow Tie #B811



**Satin - VI Silver**  
Vest #V511  
Windsor #F511  
Bow Tie #B511  
Pocket Square #H511



**Simply Solid - Mercury**  
Windsor #F301  
Pocket Square #H301



**Satin - PV Platinum**  
Vest #V521  
Windsor #F521  
Bow Tie #B521  
Pocket Square #H521



**Allure Floral - Heather**  
Windsor #F867  
Bow Tie #B867  
Pocket Square #H867



**Satin - Victorian Pewter**  
Vest #V531  
Windsor #F531  
Bow Tie #B531  
Pocket Square #H531



**Ombre Platinum**  
Windsor #T401  
Pocket Sq. #HT01



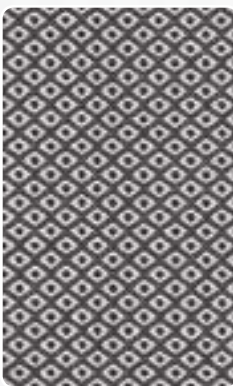
**Paisley Platinum**  
Windsor #FP01



**Solid Platinum**  
Windsor #FS01



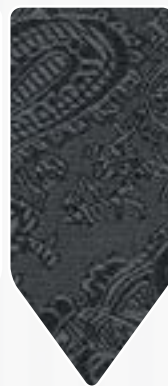
**Stripe Platinum**  
Windsor #F401



**Portofino - Platinum**  
Vest #M401  
Bow Tie #S401  
Pocket Square #H401



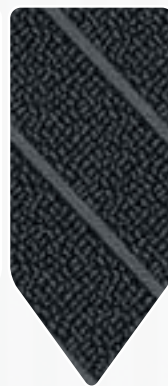
**Ombre Pewter**  
Windsor #T431  
Pocket Sq. #HT31



**Paisley Pewter**  
Windsor #FP31



**Solid Pewter**  
Windsor #FS31



**Stripe Pewter**  
Windsor #F431



**Portofino - Pewter**  
Vest #M431  
Bow Tie #S431  
Pocket Square #H431



**Colby - Graphite**  
Windsor #F731  
Bow Tie #B731  
Pocket Square #H731



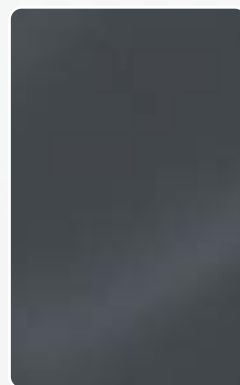
**Tweed - Gray**  
Vest #V101  
Windsor #F101  
Bow Tie #B101  
Pocket Square #H101



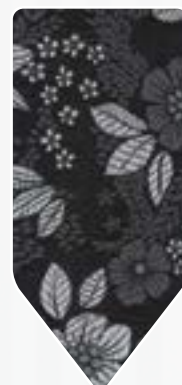
**Simply Solid - Charcoal**  
Windsor #F311  
Pocket Square #H311



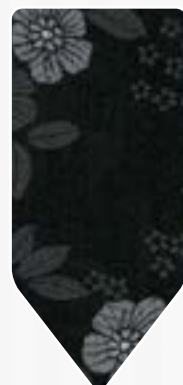
**Allure Dot - Charcoal**  
Windsor #F841  
Bow Tie #B841  
Pocket Square #H841



**Satin - Bali Gray**  
Vest #V541  
Windsor #F541  
Bow Tie #B541  
Pocket Square #H541



**Allure Floral - Steel**  
Windsor #F861  
Bow Tie #B861  
Pocket Square #H861



**Allure Floral - Black**  
Windsor #F862  
Bow Tie #B862  
Pocket Square #H862



*Black* is associated with power, elegance, formality and mystery



**Colby - Black**  
Windsor #F702  
Bow Tie #B702  
Pocket Square #H702



**Allure Dot - Black**  
Windsor #F842  
Bow Tie #B842  
Pocket Square #H842



**Simply Solid - Black**  
Windsor #F302  
Pocket Square #H302



**Satin - Black**  
Vest #V502  
Windsor #F502  
Bow Tie #B502  
Pocket Square #H502



**Ombre Black**  
Windsor #T402  
Pocket Sq. #HT02



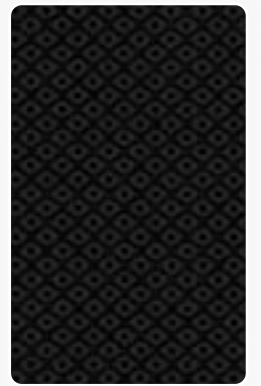
**Paisley Black**  
Windsor #FP02



**Solid Black**  
Windsor #FS02



**Stripe Black**  
Windsor #F402



**Portofino - Black**  
Vest #M402  
Bow Tie #S402  
Pocket Square #H402



PHOTOS BY:  
**NICOLE MIRO PHOTOGRAPHY**  
@ nicolemirophotography



# Size Charts

## Short (Height under 5'8")

| COAT SIZE | WEIGHT  | CHEST | OVERARM | WAIST | HIP   | OUTSEAM | NECK      | SLEEVE | VEST |
|-----------|---------|-------|---------|-------|-------|---------|-----------|--------|------|
| 34S       | 100-115 | 32-34 | 41-43   | 26-28 | 32-34 | < 40    | 13-14.5   | 31-34  | S    |
| 35S       | 105-125 | 33-35 | 42-44   | 27-29 | 33-35 | < 40    | 14-14.5   | 31-34  | S    |
| 36S       | 115-135 | 34-36 | 43-45   | 27-30 | 33-36 | < 40    | 14-14.5   | 31-34  | S    |
| 37S       | 125-145 | 35-37 | 44-46   | 28-31 | 34-37 | < 40    | 14-15.5   | 31-34  | S    |
| 38S       | 135-155 | 36-38 | 45-47   | 29-32 | 35-38 | < 40    | 14-15.5   | 31-34  | S    |
| 39S       | 145-160 | 37-39 | 46-48   | 30-33 | 36-39 | < 40    | 15-16.5   | 31-34  | M    |
| 40S       | 150-165 | 38-40 | 47-49   | 30-34 | 36-40 | < 40    | 15-16.5   | 31-34  | M    |
| 41S       | 155-170 | 39-41 | 48-50   | 31-35 | 37-41 | < 40    | 15.5-16.5 | 31-34  | M    |
| 42S       | 160-180 | 40-42 | 49-51   | 32-36 | 38-42 | < 40    | 15.5-16.5 | 31-34  | M    |
| 43S       | 170-190 | 41-43 | 50-52   | 33-37 | 39-43 | < 40    | 16-17.5   | 31-34  | L    |
| 44S       | 180-200 | 42-44 | 51-53   | 34-39 | 40-45 | < 40    | 16-17.5   | 31-34  | L    |
| 46S       | 190-210 | 44-46 | 53-55   | 36-41 | 42-47 | < 40    | 16-17.5   | 31-34  | XL   |
| 48S       | 210-230 | 46-48 | 55-57   | 38-44 | 44-50 | < 40    | 17-18.5   | 31-34  | XL   |
| 50S       | 220-250 | 48-50 | 57-59   | 40-46 | 46-52 | < 40    | 17-18.5   | 31-34  | 2XL  |
| 52S       | 240-270 | 50-52 | 58-60   | 42-48 | 48-54 | < 40    | 18-19.5   | 31-34  | 2XL  |
| 54S       | 250-280 | 52-54 | 60-62   | 44-50 | 50-56 | < 40    | 19 - 20   | 31-34  | 2XL  |

## Regular (Height 5'8" - 6')

| COAT SIZE | WEIGHT  | CHEST | OVERARM | WAIST | HIP   | OUTSEAM | NECK      | SLEEVE | VEST |
|-----------|---------|-------|---------|-------|-------|---------|-----------|--------|------|
| 34R       | 105-125 | 32-34 | 41-43   | 26-28 | 32-34 | 39-43   | 14-14.5   | 34-35  | S    |
| 35R       | 115-135 | 33-35 | 42-44   | 27-29 | 33-35 | 39-43   | 14-14.5   | 34-35  | S    |
| 36R       | 125-145 | 34-36 | 43-45   | 27-30 | 33-36 | 39-43   | 14-14.5   | 34-35  | S    |
| 37R       | 130-150 | 35-37 | 44-46   | 28-31 | 34-37 | 39-43   | 14.5-15.5 | 34-35  | S    |
| 38R       | 140-160 | 36-38 | 45-47   | 29-32 | 35-38 | 39-43   | 14.5-15.5 | 34-35  | S    |
| 39R       | 150-165 | 37-39 | 46-48   | 30-33 | 36-39 | 39-43   | 15-16.5   | 34-35  | M    |
| 40R       | 160-175 | 38-40 | 47-49   | 30-34 | 36-40 | 39-43   | 15-16.5   | 34-35  | M    |
| 41R       | 170-185 | 39-41 | 48-50   | 31-35 | 37-41 | 39-43   | 15.5-16.5 | 34-35  | M    |
| 42R       | 175-190 | 40-42 | 49-51   | 32-36 | 38-42 | 39-43   | 15.5-16.5 | 34-35  | M    |
| 43R       | 185-200 | 41-43 | 50-52   | 33-37 | 39-43 | 39-43   | 16-17.5   | 34-35  | L    |
| 44R       | 190-215 | 42-44 | 51-53   | 34-40 | 40-45 | 39-43   | 16-17.5   | 34-35  | L    |
| 46R       | 205-225 | 44-46 | 53-55   | 36-42 | 42-47 | 39-43   | 16.5-17.5 | 34-35  | XL   |
| 48R       | 220-240 | 46-48 | 55-57   | 38-43 | 44-50 | 39-43   | 17-18.5   | 34-35  | XL   |
| 50R       | 240-260 | 48-50 | 57-59   | 40-46 | 46-52 | 39-43   | 17-18.5   | 34-35  | 2XL  |
| 52R       | 260-275 | 50-52 | 58-60   | 42-48 | 48-54 | 39-43   | 17.5-18.5 | 34-35  | 2XL  |
| 54R       | 275-290 | 52-54 | 60-62   | 44-51 | 50-56 | 39-43   | 18-19.5   | 34-35  | 2XL  |
| 56R       | 290-300 | 54-56 | 63-65   | 46-53 | 52-58 | 39-43   | 18.5-20   | 34-35  | 3XL  |
| 58R       | 300-310 | 56-58 | 65-67   | 48-55 | 54-60 | 39-43   | 19-20.5   | 34-35  | 4XL  |
| 60R       | 310-330 | 58-60 | 67-69   | 50-57 | 56-62 | 39-43   | 19.5-22.5 | 34-35  | 4XL  |
| 62R       | 320-340 | 60-62 | 69-71   | 52-59 | 58-64 | 39-43   | 20-22.5   | 34-35  | 4XL  |
| 64R       | 340-350 | 62-64 | 71-73   | 54-61 | 60-66 | 39-43   | 21-24     | 34-35  | 4XL  |
| 66R       | 350-370 | 64-66 | 73-75   | 56-63 | 62-68 | 39-43   | 23-25     | 34-35  | 4XL  |

## Long (Height 6' - 6'3")

| COAT SIZE | WEIGHT  | CHEST | OVERARM | WAIST | HIP   | OUTSEAM | NECK      | SLEEVE | VEST |
|-----------|---------|-------|---------|-------|-------|---------|-----------|--------|------|
| 36L       | 135-155 | 34-36 | 43-45   | 27-30 | 33-36 | 43-45   | 14-15.5   | 36-37  | S    |
| 37L       | 140-160 | 35-37 | 44-46   | 28-31 | 34-37 | 43-45   | 14.5-15.5 | 36-37  | S    |
| 38L       | 150-175 | 36-38 | 45-47   | 29-32 | 35-38 | 43-45   | 14.5-15.5 | 36-37  | S    |
| 39L       | 155-185 | 37-39 | 46-48   | 30-33 | 36-39 | 43-45   | 15-16.5   | 36-37  | M    |
| 40L       | 160-185 | 38-40 | 47-49   | 30-34 | 36-40 | 43-45   | 15-16.5   | 36-37  | M    |
| 41L       | 170-190 | 39-41 | 48-50   | 31-35 | 37-41 | 43-45   | 15.5-16.5 | 36-37  | M    |
| 42L       | 175-200 | 40-42 | 49-51   | 32-36 | 38-42 | 43-45   | 15.5-16.5 | 36-37  | M    |
| 43L       | 185-210 | 41-43 | 50-52   | 33-37 | 39-43 | 43-45   | 16-17.5   | 36-37  | L    |
| 44L       | 200-225 | 42-44 | 51-53   | 34-40 | 40-45 | 43-45   | 16-17.5   | 36-37  | L    |
| 46L       | 210-235 | 44-46 | 53-55   | 36-42 | 42-47 | 43-45   | 16.5-17.5 | 36-37  | XL   |
| 48L       | 220-245 | 46-48 | 55-57   | 38-43 | 44-50 | 43-45   | 17-18.5   | 36-37  | XL   |
| 50L       | 240-265 | 48-50 | 57-59   | 40-46 | 46-52 | 43-45   | 17-18.5   | 36-37  | 2XL  |
| 52L       | 250-275 | 50-52 | 58-60   | 42-48 | 48-54 | 43-45   | 17.5-18.5 | 36-37  | 2XL  |
| 54L       | 265-290 | 52-54 | 60-62   | 44-51 | 50-56 | 43-45   | 18-19.5   | 36-37  | 2XL  |
| 56L       | 280-305 | 54-56 | 63-65   | 46-53 | 52-58 | 43-45   | 18.5-20   | 36-37  | 3XL  |
| 58L       | 295-315 | 56-58 | 65-67   | 48-55 | 54-60 | 43-45   | 19-20.5   | 36-37  | 4XL  |
| 60L       | 305-330 | 58-60 | 67-69   | 50-57 | 56-62 | 43-45   | 19.5-22.5 | 36-37  | 4XL  |
| 62L       | 315-340 | 60-62 | 69-71   | 52-59 | 58-64 | 43-45   | 20-22.5   | 36-37  | 4XL  |
| 64L       | 325-350 | 62-64 | 71-73   | 54-61 | 60-66 | 43-45   | 21-24     | 36-37  | 4XL  |
| 66L       | 350-375 | 64-66 | 73-75   | 56-63 | 62-68 | 43-45   | 23-26     | 36-37  | 4XL  |

## X-Long (Height over 6'3")

| COAT SIZE | WEIGHT  | CHEST | OVERARM | WAIST | HIP   | OUTSEAM | NECK      | SLEEVE | VEST    |
|-----------|---------|-------|---------|-------|-------|---------|-----------|--------|---------|
| 38X       | 150-180 | 36-38 | 45-47   | 28-32 | 35-38 | > 43    | 14-15.5   | > 36   | M-Long  |
| 39X       | 160-185 | 37-39 | 46-48   | 30-33 | 36-39 | > 43    | 15-16.5   | > 36   | M-Long  |
| 40X       | 165-190 | 38-40 | 47-49   | 31-34 | 36-40 | > 43    | 15-16.5   | > 36   | M-Long  |
| 42X       | 180-205 | 40-42 | 49-51   | 32-36 | 38-42 | > 43    | 15.5-16.5 | > 36   | M-Long  |
| 44X       | 200-230 | 42-44 | 51-53   | 34-40 | 40-46 | > 43    | 16-17.5   | > 36   | L-Long  |
| 46X       | 215-240 | 44-46 | 53-55   | 36-42 | 42-48 | > 43    | 16-17.5   | > 36   | XL-Long |
| 48X       | 230-270 | 46-48 | 55-57   | 38-44 | 44-50 | > 43    | 17-18.5   | > 36   | XL-Long |

## Men's Standard Pant Sizes

| SIZE | 3 WAIST SIZE - ADJUSTABLE |
|------|---------------------------|
| 1    | 27 - 28 - 29              |
| 2    | 30 - 31 - 32              |
| 3    | 33 - 34 - 35              |
| 4    | 36 - 37 - 38              |
| 5    | 39 - 40 - 41              |
| 6    | 42 - 43 - 44              |
| 7    | 45 - 46 - 47              |
| 8    | 48 - 49 - 50              |
| 9    | 51 - 52 - 53              |
| 10   | 54 - 55 - 56              |
| 11   | 57 - 58 - 59              |
| 12   | 60 - 61 - 62              |
| 13   | 63 - 64 - 65              |
| 14   | 66 - 67 - 68              |
| 15   | 69 - 70 - 71              |

## Belt Sizes

| SIZE       | FITS WAIST SIZES |
|------------|------------------|
| (Boys) 20" | 18 - 23          |
| (Boys) 25" | 23 - 28          |
| 30"        | 28 - 32          |
| 32"        | 30 - 34          |
| 34"        | 32 - 36          |
| 36"        | 34 - 38          |
| 38"        | 36 - 40          |
| 40"        | 38 - 42          |
| 42"        | 40 - 44          |
| 44"        | 42 - 46          |
| 46"        | 44 - 48          |
| 48"        | 46 - 50          |
| 50"        | 48 - 52          |
| 54"        | 52 - 56          |
| 58"        | 56 - 60          |
| 62"        | 60 - 64          |

## David Major Suit Trousers

| SIZE | 2 WAIST SIZE - ELASTIC |
|------|------------------------|
| 18B  | 17 - 18                |
| 20B  | 19 - 20                |
| 22B  | 21 - 22                |
| 24B  | 23 - 24                |
| 26B  | 25 - 26                |
| 1    | 28 - 29                |
| 2    | 30 - 31                |
| 3    | 32 - 33                |
| 4    | 34 - 35                |
| 5    | 36 - 37                |
| 6    | 38 - 39                |
| 7    | 40 - 41                |

| SIZE | WAIST SIZE - ELASTIC |
|------|----------------------|
| 8    | 42 - 43              |
| 9    | 44 - 45              |
| 10   | 46 - 47              |
| 11   | 48 - 49              |
| 12   | 50 - 51              |
| 13   | 52 - 53              |
| 14   | 54 - 55              |
| 15   | 56 - 57              |
| 16   | 58 - 59              |
| 17   | 60 - 61              |
| 18   | 62 - 63              |
| 19   | 64 - 65              |

## Vest Sizes

| SIZE         | SIZE CODE | FITS COAT SIZES | FULL BACK | OPEN BACK |
|--------------|-----------|-----------------|-----------|-----------|
| BOY'S SMALL  | BS        | 3 - 6           |           | X         |
| BOY'S MEDIUM | BM        | 7 - 12          |           | X         |
| BOY'S LARGE  | BL        | 14 - 16         |           | X         |
| SMALL        | S         | 34 - 38         | X         |           |
| MEDIUM       | M         | 39 - 42         | X         |           |
| LARGE        | L         | 43 - 44         | X         |           |
| X-LARGE      | XL        | 46 - 48         | X         |           |
| 2X-LARGE     | 2XL       | 50 - 52         | X         |           |
| 3X-LARGE     | 3XL       | 54 - 56         | X         |           |
| 4X-LARGE     | 4XL       | 58 +            | *         | X         |
| 5X-LARGE     | 5XL       | 60 +            | *         | X         |

\* Some styles

## Fitted Shirt Sizes

| NECK / SLEEVE | XS (13-13.5) | S (14-14.5) | M (15-15.5) | L (16-16.5) | XL (17-17.5) | 2XL (18-18.5) |
|---------------|--------------|-------------|-------------|-------------|--------------|---------------|
| 30-31         | x            | x           | x           | x           |              |               |
| 32-33         | x            | x           | x           | x           | x            | x             |
| 34-35         |              | x           | x           | x           | x            | x             |
| 36-37         |              | x           | x           | x           | x            | x             |
| 38-39         |              |             | x           | x           | x            | x             |
| 40-41         |              |             |             | x           | x            | x             |
| Max. Chest    |              | 32-37       | 37-41       | 41-44       | 44-47        | 46-50         |
| Max. Waist    |              | 27-31       | 30-34       | 33-37       | 36-41        | 39-44         |



Boy's Size Chart

| COAT SIZE | HEIGHT   | WEIGHT    | CHEST   | WAIST   | OUTSEAM | SHIRT  |
|-----------|----------|-----------|---------|---------|---------|--------|
| 3         | 35 - 38" | 30 - 35   | 23      | 18 - 20 | 19 - 22 | BXS    |
| 4         | 38 - 42" | 35 - 40   | 24      | 20 - 21 | 22 - 23 | BXS    |
| 5         | 41 - 43" | 40 - 45   | 24.5    | 20 - 23 | 23 - 25 | BXS-BS |
| 6         | 44 - 46" | 45 - 50   | 25      | 21 - 23 | 23 - 27 | BS     |
| 8         | 47 - 50" | 50 - 60   | 26 - 27 | 22 - 24 | 25 - 30 | BS-BM  |
| 10        | 51 - 54" | 60 - 75   | 27 - 28 | 22 - 25 | 29 - 32 | BS-BM  |
| 12        | 55 - 58" | 75 - 90   | 29 - 30 | 24 - 26 | 33 - 37 | BM     |
| 14        | 59 - 62" | 90 - 105  | 31.5    | 25 - 27 | 34 - 38 | BM-BL  |
| 16        | 63 - 65" | 105 - 115 | 33      | 26 - 28 | 36 - 50 | BL     |
| 18        | 66 - 67" | 115 - 130 | 35      | 27 - 30 | 37 - 41 | BL     |

Boy's Shirt Sizes

| SHIRT SIZE | NECK      | MAX. SLEEVE |
|------------|-----------|-------------|
| BXS        | 10 - 10.5 | 19          |
| BS         | 11 - 11.5 | 22          |
| BM         | 12 - 12.5 | 25          |
| BL         | 13 - 13.5 | 29          |
| XS MENS    | 14 - 14.5 | 31 or 33    |

Boy's Pant Sizes

| SIZE | WAIST   | MAX. OUTSEAM* |
|------|---------|---------------|
| 18B  | 18 - 19 | 25.5          |
| 20B  | 20 - 21 | 29.5          |
| 22B  | 22 - 23 | 33.5          |
| 24B  | 24 - 25 | 37.5          |
| 26B  | 26 - 27 | 41.5          |

**Notice:** Boy's shirt sizes have specified sleeve lengths, as shown. Armbands are available for boys that require a large shirt but have a shorter sleeve measurement. Boy's with coat sizes 14 - 18 will receive a men's tie. Boys in a size 18 coat will receive a men's small vest.

For more measuring tips, refer to your 'Formalwear Assistant'

**Notice:**

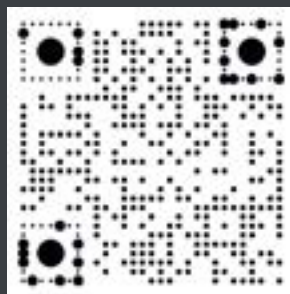
The size charts listed here are to serve as a general guideline of men's formalwear sizes. Fit will vary according to height, weight, body shape and tuxedo style. Remember to fit the largest part of the body for comfort. Please use these charts as a reference when checking out of town measurements and confirmation reports. If you need help with sizing, call our customer service department at (800) 236-7303.

Coordinating Coat, Pant, and Vest Chart

| #                  | Description           | Fit          | Color             | Pants | Vest | Buttons | Bow Tie | Windsor Tie            | Pocket Square |
|--------------------|-----------------------|--------------|-------------------|-------|------|---------|---------|------------------------|---------------|
| <b>BLACK</b>       |                       |              |                   |       |      |         |         |                        |               |
| 144                | MOD Metro             | Slim         | Black             | 144   | V144 | 4       | -       | -                      | -             |
| 232                | Ike Behar Waverly     | Slim         | Black             | 144   | V244 | 4       | -       | -                      | -             |
| 252                | Traditional Notch     | Modern       | Black             | 144   | V502 | 5       | -       | -                      | -             |
| 262                | Ike Behar Ashton      | Slim         | Black             | 144   | V244 | 4       | -       | -                      | -             |
| 352                | David Major Stretch   | Slim         | Black             | 352   | V352 | 4       | -       | -                      | -             |
| 512                | FCG Cutaway           | Contemporary | Black             | 121   | n/a  | -       | -       | -                      | -             |
| <b>IVORY</b>       |                       |              |                   |       |      |         |         |                        |               |
| 407                | Lord West Traditional | Contemporary | Ivory             | 407   | V509 | 5       | -       | -                      | -             |
| <b>BROWN / TAN</b> |                       |              |                   |       |      |         |         |                        |               |
| 125                | Ike Behar Archer      | Slim         | Brown             | 125   | V125 | 4       | B125    | F125                   | H125          |
| 126                | MOD Lorenzo           | Slim         | Cinnamon          | 126   | V126 | 4       | B126    | F126                   | H126          |
| 355                | David Major Stretch   | Slim         | Tan               | 355   | V355 | 4       | B355    | F355                   | H355          |
| <b>BURGUNDY</b>    |                       |              |                   |       |      |         |         |                        |               |
| 186                | Ike Behar Marbella    | Slim         | Burgundy          | 186   | V186 | 4       | -       | -                      | -             |
| <b>GREEN</b>       |                       |              |                   |       |      |         |         |                        |               |
| 128                | Ike Behar Luka        | Slim         | Hunter Green      | 128   | V128 | 4       | B128    | F128                   | H128          |
| <b>GRAY</b>        |                       |              |                   |       |      |         |         |                        |               |
| 151                | Kenneth Cole Lennox   | Slim         | Heather Gray      | 151   | V151 | 4       | B151    | F151                   | H151          |
| 161                | Ike Behar Xavier      | Slim         | Charcoal Gray     | 161   | V161 | 4       | -       | -                      | -             |
| 171                | Ike Behar Grayson     | Slim         | Medium Gray       | 171   | V171 | 4       | B171    | F171                   | H171          |
| 191                | Jean Yves Twilight    | Modern       | Steel Gray        | 191   | M191 | 3       | -       | F191                   | H191          |
| 291                | Jean Yves Allure Men  | Modern       | Steel Gray        | 191   | M191 | 3       | -       | F191                   | H191          |
| 351                | David Major Stretch   | Slim         | Light Gray        | 351   | V351 | 4       | B351    | F351                   | H351          |
| 391                | Jean Yves Ceremonia   | Modern       | Steel Gray        | 191   | V391 | 3       | -       | F191                   | H191          |
| 521                | Lord West Cutaway     | Contemporary | Charcoal Gray     | 121   | n/a  | -       | -       | -                      | -             |
| <b>BLUE / NAVY</b> |                       |              |                   |       |      |         |         |                        |               |
| 123                | Allure Men Ridge      | Slim         | Denim Blue        | 123   | V123 | 5       | B123    | F123                   | H123          |
| 133                | Ike Behar Lane        | Slim         | Dusk Blue         | 133   | V133 | 4       | B133    | F133                   | H133          |
| 143                | Ike Behar Blake       | Slim         | Navy              | 243   | V243 | 4       | -       | -                      | -             |
| 153                | Ike Behar Sebastian   | Slim         | Navy              | 243   | V243 | 4       | -       | -                      | -             |
| 243                | Ike Behar Collin      | Slim         | Navy              | 243   | V243 | 4       | B243    | F243                   | H243          |
| 333                | David Major Stretch   | Slim         | French Blue       | 333   | V333 | 4       | B333    | F333                   | H333          |
| <b>WHITE</b>       |                       |              |                   |       |      |         |         |                        |               |
| 280                | Ike Behar Aragon      | Slim         | White             | 280   | V280 | 4       | B280    | F280                   | H280          |
| <b>SPECIALTY</b>   |                       |              |                   |       |      |         |         |                        |               |
| 951                | MOD Starlight Lame'   | Slim         | Silver            | 352   | -    | -       | B951    | -                      | -             |
| 952                | MOD Equinox           | Slim         | Black Velvet      | 352   | V952 | 4       | B952    | Vest/Tie = Solid Black |               |
| 953                | MOD Starlight Lame'   | Slim         | Blue              | 352   | -    | -       | B953    | -                      | -             |
| 954                | Allure Men Venice     | Slim         | Dusty Rose Velvet | 352   | -    | -       | -       | -                      | -             |
| 956                | Ike Behar Carter      | Slim         | Red               | 352   | V956 | 4       | -       | -                      | -             |
| 957                | Allure Men Venice     | Slim         | Aubergine Velvet  | 352   | -    | -       | -       | -                      | -             |
| 959                | MOD Camo Lame'        | Slim         | Black & Gold      | 352   | -    | -       | B959    | -                      | -             |
| 961                | MOD Starlight Lame'   | Slim         | Stone             | 352   | -    | -       | B951    | -                      | -             |
| 963                | MOD Hendrix           | Slim         | Multi-Color       | 352   | -    | -       | B963    | -                      | -             |
| 969                | MOD Ryan              | Slim         | Floral            | 352   | -    | -       | B969    | -                      | -             |



*Du Bois*  
FORMALWEAR



Scan this code to view the  
DuBois Digital Catalog!