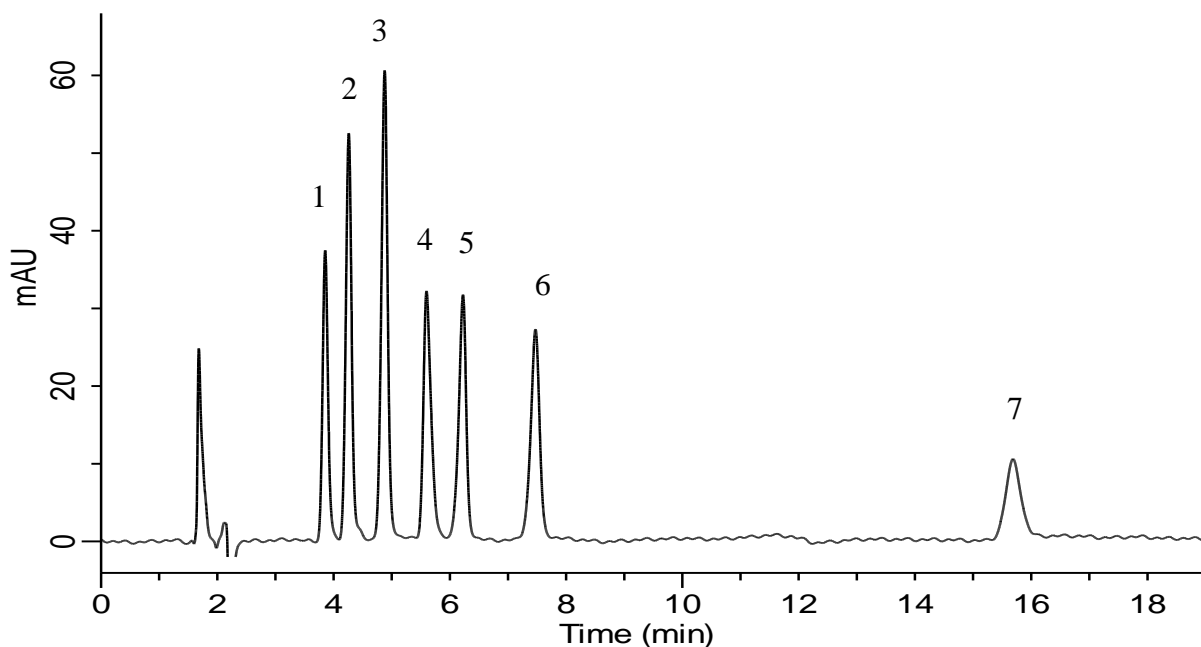


# InertSearch for LC

Inertsil Applications

## Analysis of Dipeptides

Data No. LB643-0806



### Conditions

**Column** : InertSustain Amide  
(1.9  $\mu$  m, 150 x 2.1 mm I.D.)

**Column Cat. No.** : 5020-88819

**Eluent** : A) CH<sub>3</sub>CN  
B) 10 mM HCOONH<sub>4</sub> + 0.1% HCOOH in H<sub>2</sub>O  
A/B = 75/25, v/v

**Flow rate** : 0.2 mL/min

**Col. Temp.** : 40 °C

**Detection** : UV 220 nm

**Injection Vol.** : 1  $\mu$  L

**Sample** : Standard

### Analyte:

1. Ala-Phe	100 mg/L
2. Ala-Val	100 mg/L
3. Ala-Tyr	100 mg/L
4. Ala-Ala	100 mg/L
5. Ala-Gly	100 mg/L
6. Ala-Gln	100 mg/L
7. Ala-His	100 mg/L