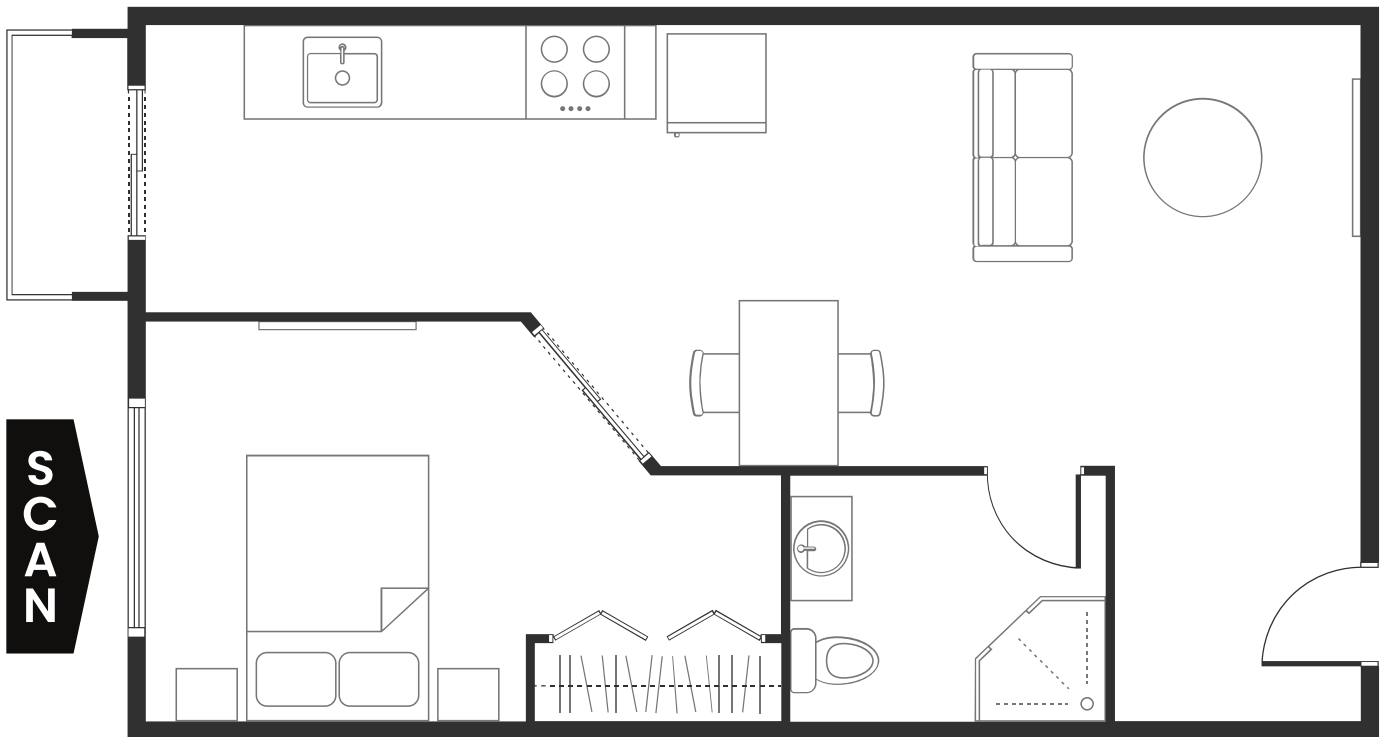



# FLOOR PLAN OPTIONS & SAMPLES



MAC IMAGERY  
PHOTOGRAPHIC SERVICES



 [contact@macimagery.com.au](mailto:contact@macimagery.com.au)

 0423 640 432

 [www.macimagery.com.au](http://www.macimagery.com.au)

# FLOOR SCAN TECHNOLOGY

FLOOR PLANS ARE INDICATIVE OF THE LAYOUT

DIMENSIONS ARE HIGHLY RELIABLE, BUT NOT GUARANTEED

## INFORMATION

- 2D and 3D floor plans are internal space scan technology for accurate dimension & fixture capture such as:
  - Doors, windows
  - Kitchen fixtures, sinks, stovetop, fixed pantries etc
  - Bathroom fixtures, toilet, shower, bath, vanity basic etc
  - Fireplaces, fixed wardrobes, storage rooms
  - Stairs, covered decks
- Standard 'No Frills' floor plans can be upgraded at any-time to the 2D & 3D PLUS options
- Any floor plan can be upgraded to 3D Virtual Walkthrough Tours - contact me for information.
- Pick your coloured style for 2D floor plans from the samples below.
- Can't pick a style? A tailored style can be created to suit your business for a small fee.

## LIMITATIONS

- 2D & 3D products have a maximum scan of 12,000sqft (1,114m<sup>2</sup>)
- Properties over 5,000sqft (465m<sup>2</sup>), additional fees apply in addition to package purchased. See below additional fees

### 2D FLOOR PLANS - ADDITIONAL FEES

465-697 M2	(5,001-7,500SQFT)	\$45
698-929 M2	(7,501-10,000SQFT)	\$90
930M2 AND ABOVE	(10,001SQFT)	\$135

### 3D FLOOR PLANS - ADDITIONAL FEES

465-697M2	(5,001-7,500SQFT)	\$110
698-929M2	(7,501-10,000SQFT)	\$215
930M2 AND ABOVE	(10,001SQFT)	\$325

## 2D FLOOR PLAN STANDARD 'NO FRILLS'

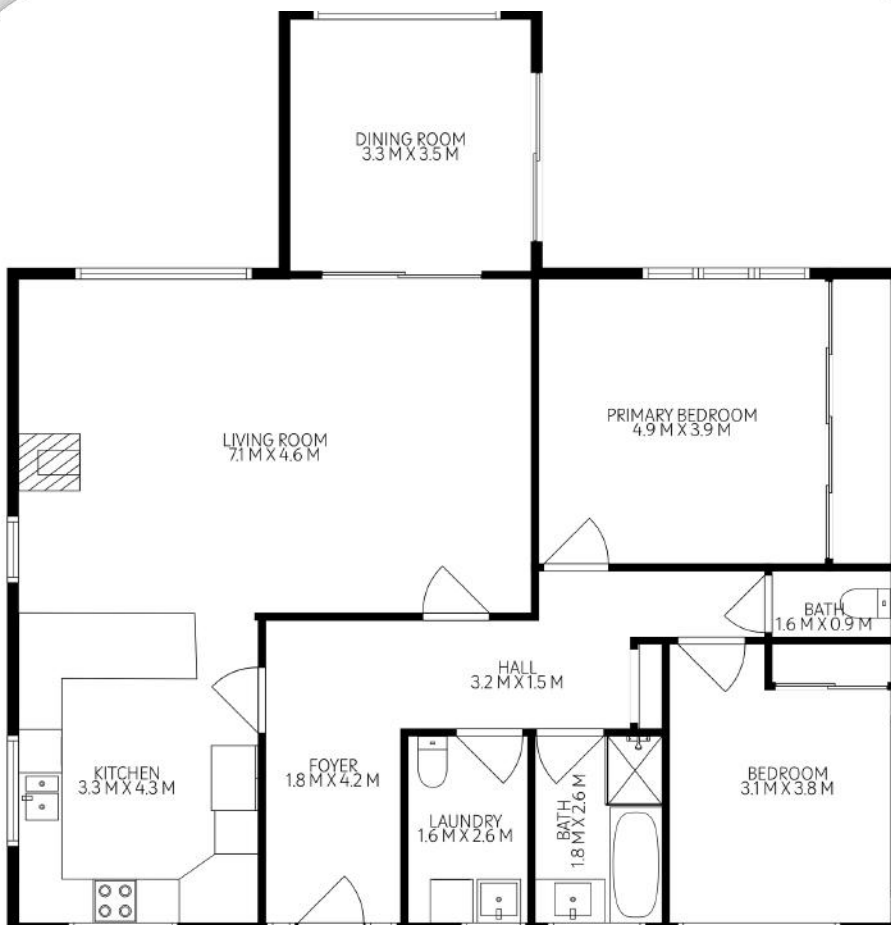
**\$50**



- Free with 'Residential Packages 2-4'
- 'No' fixed furniture
- With & without dimensions
- Choose your colour style
- Can upgrade to PLUS option later 'upgrade fee applies'

## 2D FLOOR PLAN 'PLUS'

**\$80**



- PLUS fixed furniture
- With & without dimensions
- Choose your colour style
- Can upgrade to 2D & 3D PLUS Option later 'upgrade fee applies'

# 2D & 3D FLOOR PLAN 'PLUS'

# \$160

INCLUDES ALL FEATURES OF '2D FLOOR PLAN PLUS + 3D'

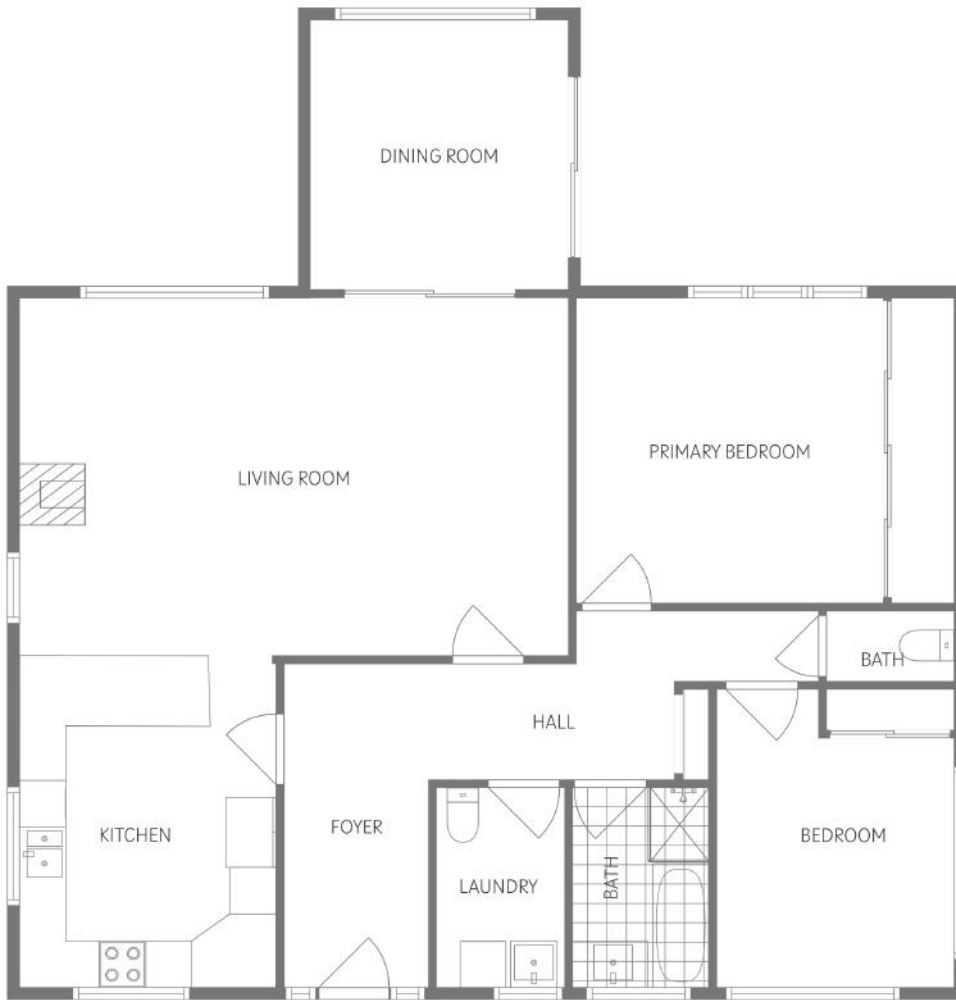


## 2D FLOOR PLAN 'SAMPLES'

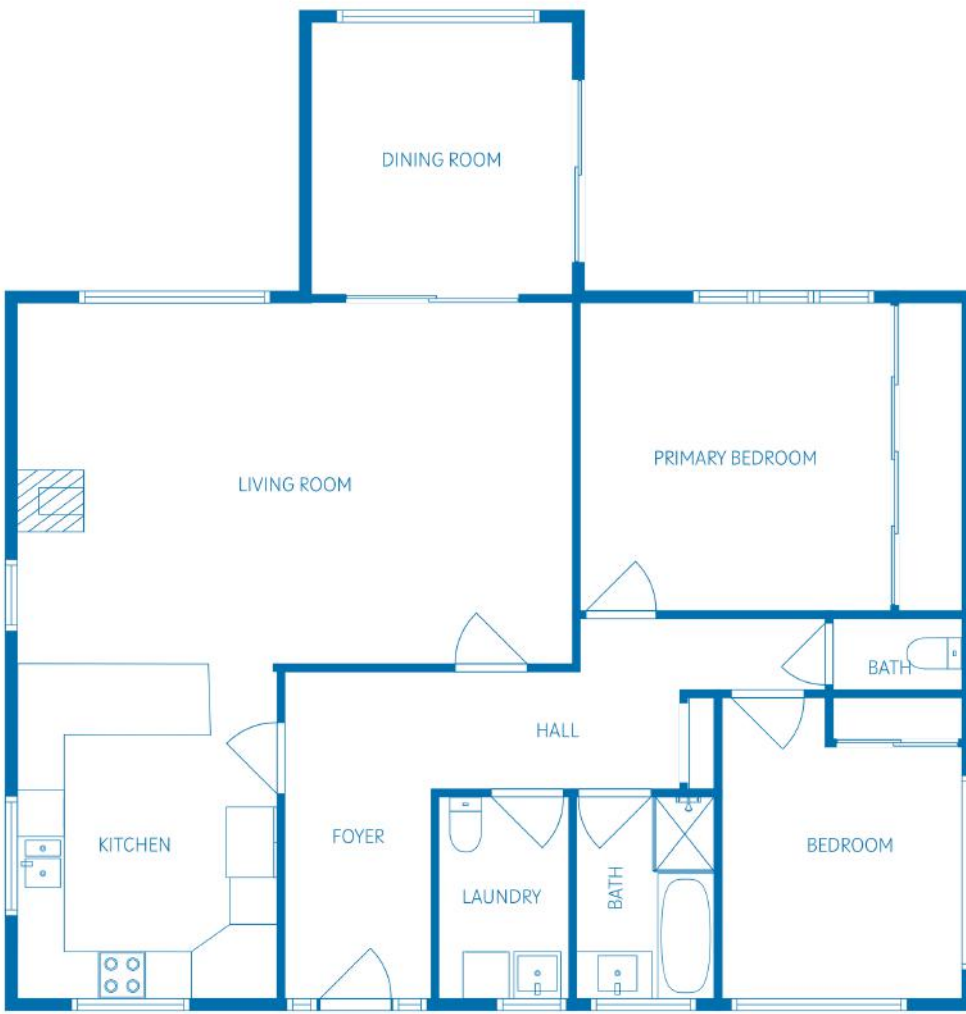
- ✓ AVAILABLE FOR ANY 2D FLOOR PLAN
  - ✓ SELECT A COLOURED STYLE
- FIXTURES ONLY AVAILABLE ON 'PLUS' OPTIONS



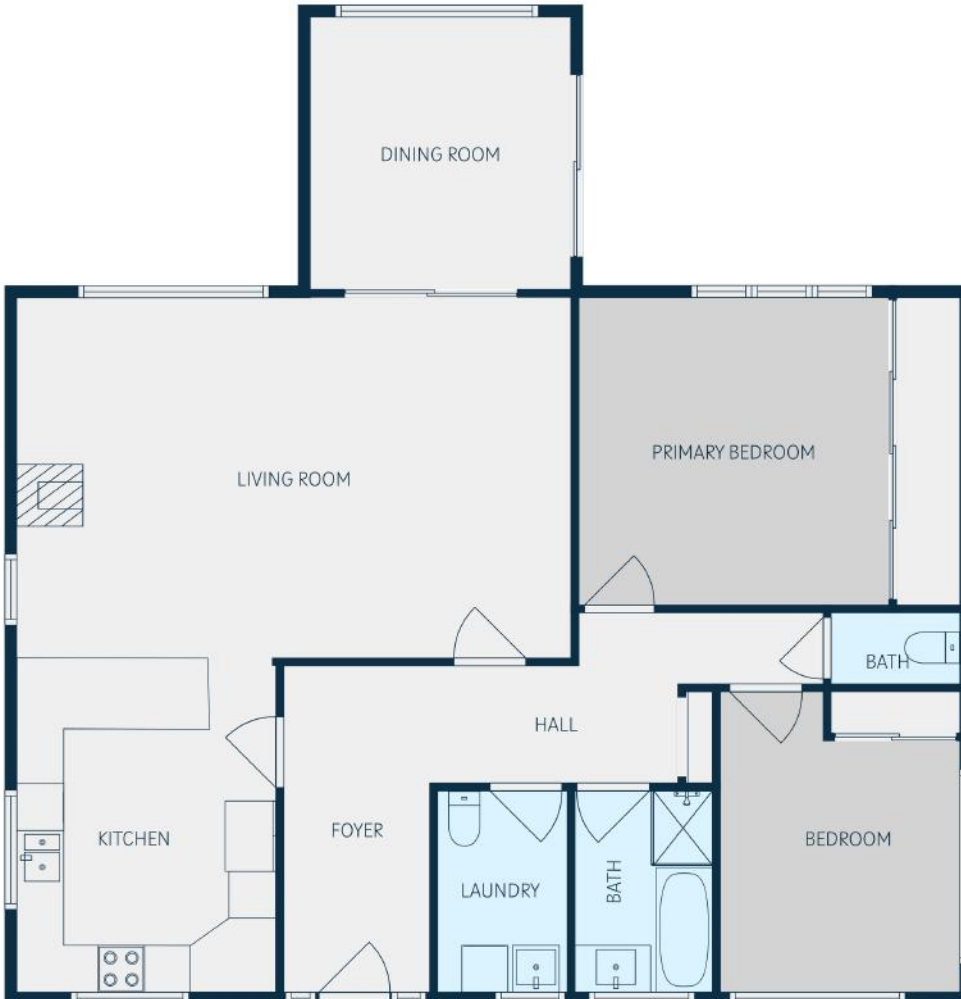
BLACK & WHITE



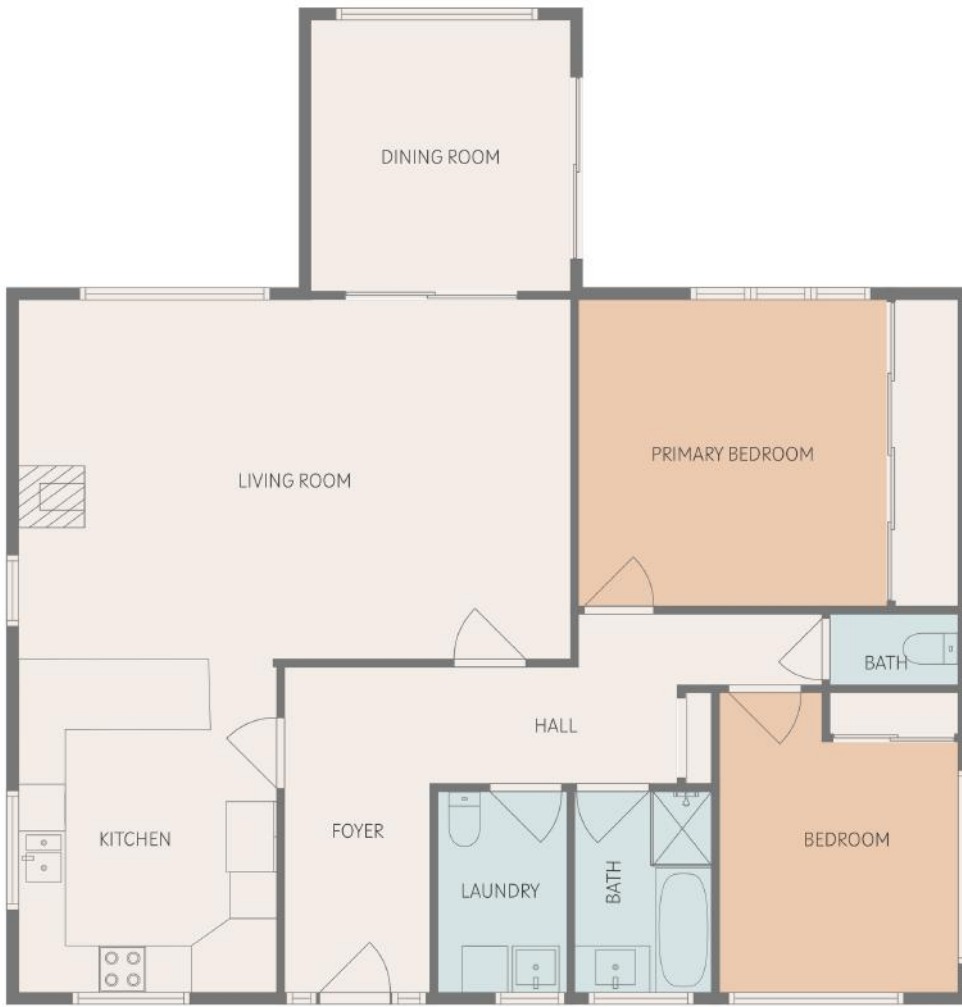
ELEGANT



BLUE PRINT



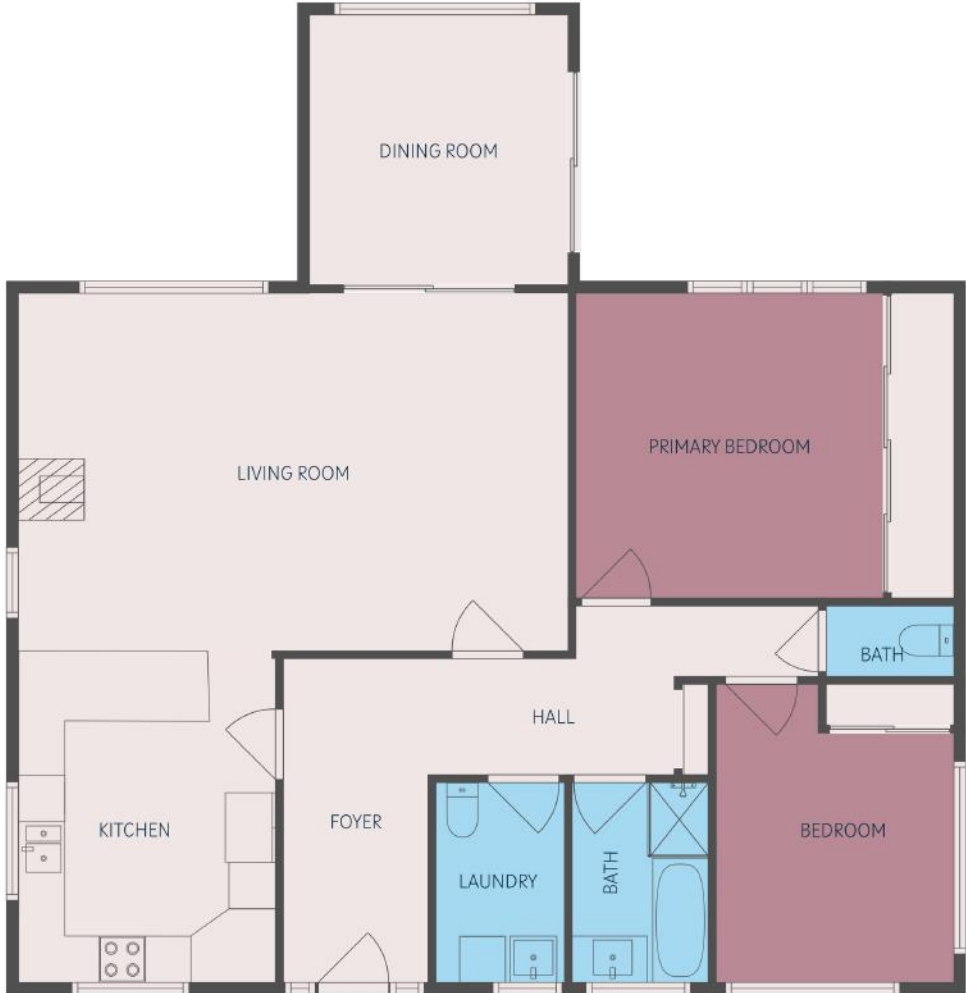
MODERN



EARTH TONES



WET AREAS



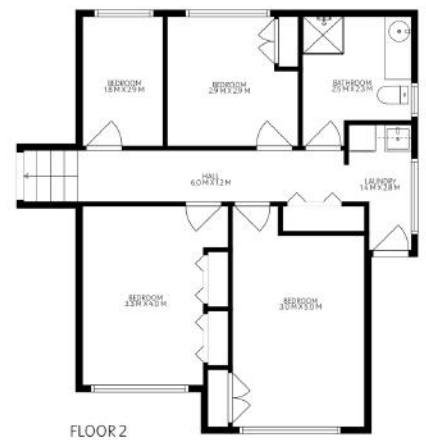
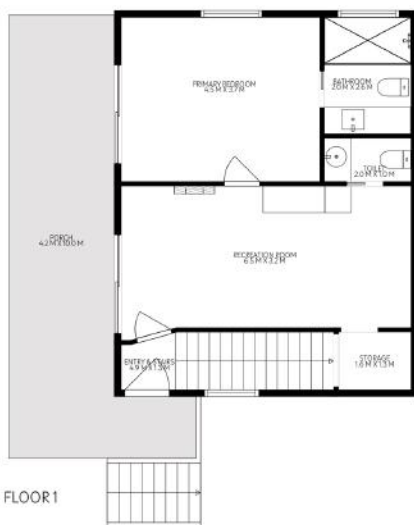
PASTELS



GREEN ENVY



BLACK BASE



BLACK & WHITE, REFLECTIVE OF OUTDOOR AREAS

# 3D FLOOR PLANS



3D floor plans include true-to-life furniture, colors, and textures, creating a highly realistic experience.



If you have a vacant or cluttered property, we can bring it to life with carefully styled interiors.



This approach helps buyers visualise how furniture fits, appreciate home design features, and personalise the space to suit their taste.

# 'BUILD YOUR OWN' 2D FLOOR PLAN COLOUR STYLE

## 'IN DEVELOPMENT'

**\$50  
ONE  
OFF  
SETUP  
FEE**

- Change colours of walls, rooms, flooring, wet areas
- Change background colour
- Match your company brand colours
- Change font
- Both portrait & landscape templates included free with any floor plan purchase. **See below layout examples**

- ✓ Chat to me today about creating a template for your business and refine your requirements.
- ✓ Once a template is created, you will receive this template for every 2D floor plan purchased, at no extra cost.



**INCLUDED FREE WITH  
ANY FLOOR PLAN PURCHASE**  
LAYOUT EXAMPLE 'PORTRAIT' MULTIPLE FLOORS



**INTERNAL: 189m<sup>2</sup>**  
**EXTERNAL: 82m<sup>2</sup>**



Floor plans are indicative of layout.  
Dimensions are highly reliable but not guaranteed.

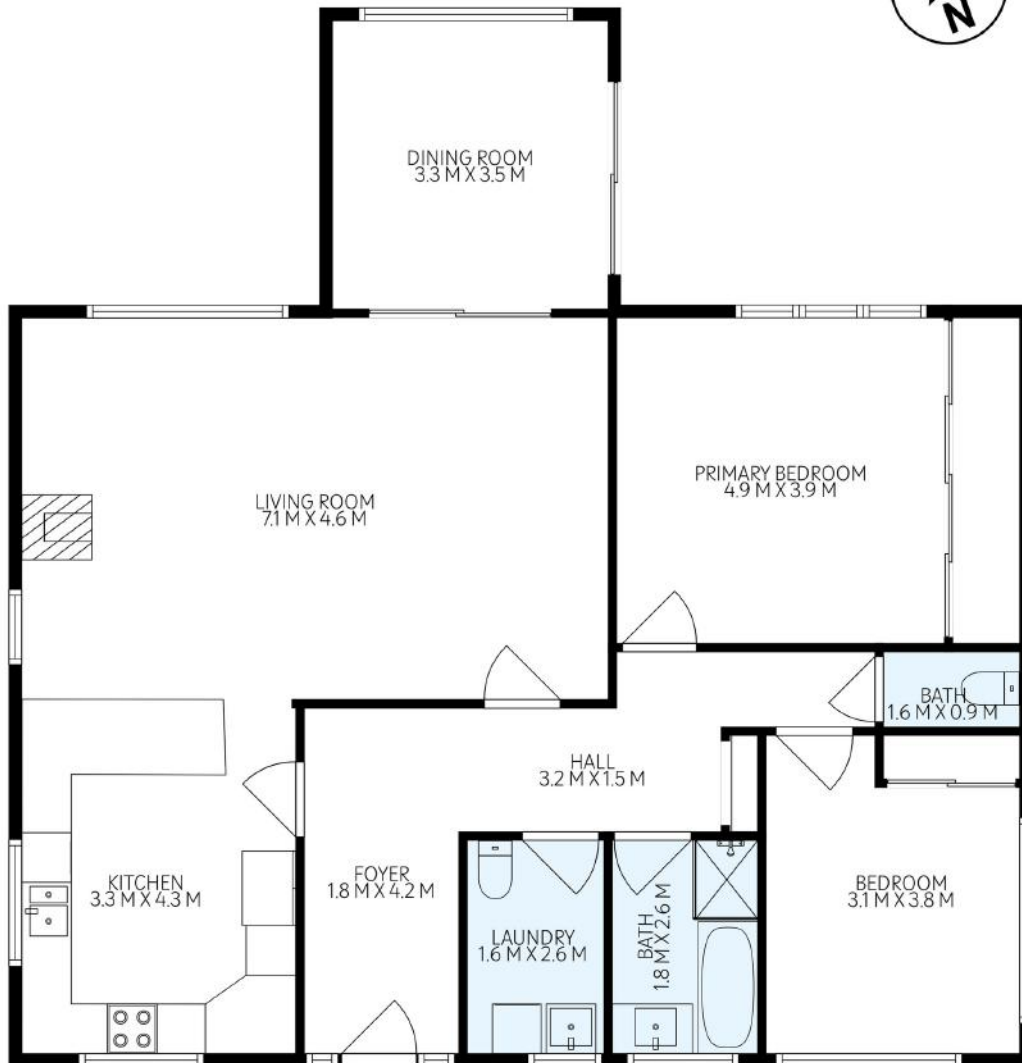
**1 EXAMPLE STREET  
PARADISE, TAS 7000**



LOGO MUST BE SUPPLIED & ANY PERSONAL DISCLAIMERS.

**INCLUDED FREE WITH ANY  
FLOOR PLAN PURCHASE**

LAYOUT EXAMPLE 'PORTRAIT' SINGLE FLOOR



**FLOOR 1**

**FLOOR AREA:  
119m<sup>2</sup>**

**1 EXAMPLE STREET  
PARADISE, TAS 7000**

Floor plans are indicative of layout.  
Dimensions are highly reliable but not guaranteed.

LOGO MUST BE SUPPLIED & ANY PERSONAL DISCLAIMERS.

# INCLUDED FREE WITH ANY FLOOR PLAN PURCHASE

LAYOUT EXAMPLE 'LANDSCAPE' MULTIPLE FLOORS



INTERNAL: 189m<sup>2</sup>  
EXTERNAL: 82m<sup>2</sup>



1 EXAMPLE STREET  
PARADISE TAS 7000

Floor plans are indicative of layout.  
Dimensions are highly reliable but not guaranteed.



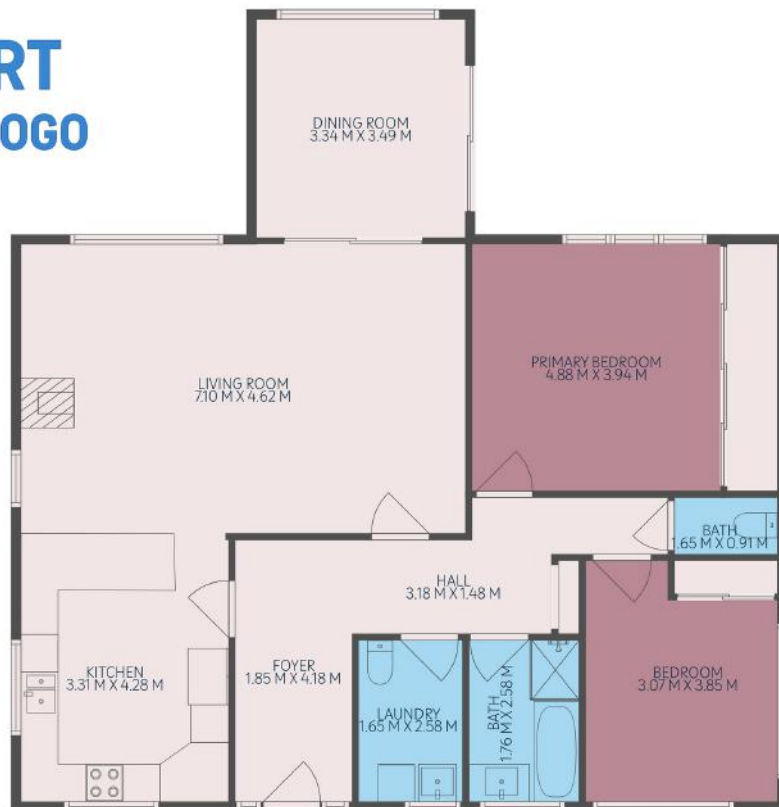
LOGO MUST BE SUPPLIED & ANY PERSONAL DISCLAIMERS.

# INCLUDED FREE WITH ANY FLOOR PLAN PURCHASE

LAYOUT EXAMPLE 'LANDSCAPE' SINGLE FLOOR



**INSERT  
YOUR LOGO**



**FLOOR 1**

**FLOOR AREA: 119m2**

**1 EXAMPLE STREET  
PARADISE 7000**

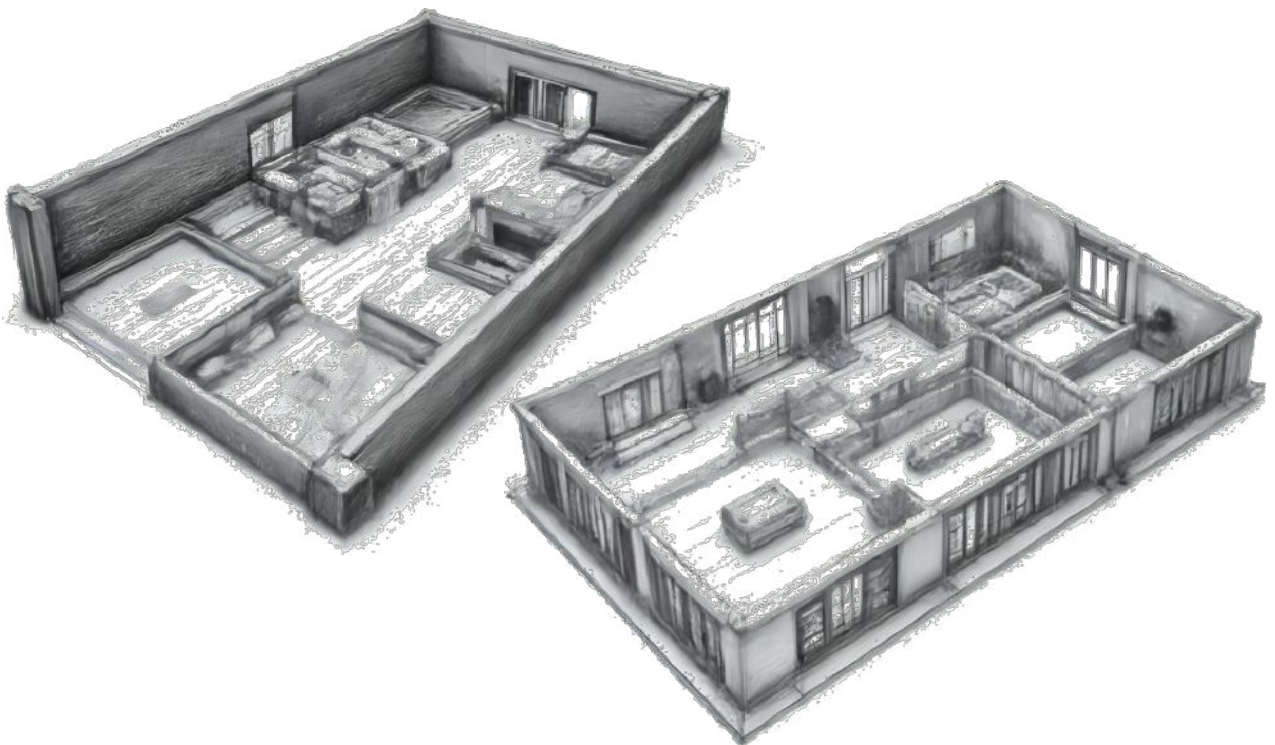
Floor plans are indicative of layout.  
Dimensions are highly reliable but not guaranteed.

LOGO MUST BE SUPPLIED & ANY PERSONAL DISCLAIMERS.




# MAC IMAGERY

PHOTOGRAPHIC SERVICES



Contact Valérie today to discuss your requirements.

 [contact@macimagery.com.au](mailto:contact@macimagery.com.au)

 0423 640 432

 [www.macimagery.com.au](http://www.macimagery.com.au)