



MOUNT CARMEL CATHOLIC COLLEGE ENROLMENT INFORMATION



College Prayer

Our Lady of Mount Carmel,
in faith and trust,
we place ourselves under your care.

For our College community
we ask courage, wisdom and guidance.

Mary, our good mother,
help us to follow your example,
so that, by what we say or do,
we may walk in truth at all times.

With your support may we strive to live the dream of
Marcellin Champagnat:
"to make Jesus known and loved."

Amen



ENROLMENT INFORMATION

A MESSAGE FROM OUR PRINCIPAL

Dear Parent/Guardian and prospective students,

Thank you for considering Mount Carmel Catholic College as a potential school for your secondary education. Mount Carmel is a College with a basis in Catholic teachings that aims to provide students with varied and interesting options. In this way, our fundamental belief is in creating a Christ-centred community providing opportunities for excellence.

As a College established on Marist traditions our core goal is to educate the whole student in terms of their academic, spiritual, sporting and cultural development. This is achieved through a strong Pastoral Care program that aims to address the needs of each individual student whilst balancing the needs of the community as a whole. With influences from the Carmelite traditions of our local parish community, our approach is based on a welcoming and calm environment that allows students to achieve their best.

Whilst we are extremely proud of our recent HSC successes and our students' achievements on the sporting field, our greatest results are the well-rounded young men and women that graduate from Mount Carmel. The resilience of these students can be attributed to the high expectations that are set for them, and by them, and the opportunities for reflection and feedback. This would not however, be possible without the ongoing and essential support of parents as the primary educators of their children. As a community, we ask that the stated values and expectations of the College are a reinforcement of the values and expectations within your home.

The following document will present you with a range of information in regards to what we do, how we do it and why we do it. This information is important in helping you to determine whether Mount Carmel is the school of choice for your child in their secondary education. I wish you the best and thank you for considering Mount Carmel Catholic College as a community for the education of your child.

With warm regards,

Mr Steve Lo Cascio
Principal





ENROLMENT INFORMATION

COLLEGE PROFILE

The College

Mount Carmel Catholic College receives its mandate to operate from the Catholic Bishop of the Diocese of Wollongong and is part of the Diocesan Catholic Education system. As such, it draws its inspiration from the Bishop and the local Church and works closely in harmony with the Catholic Education Office situated in Wollongong.

The College also works with the Catholic primary schools in the Macarthur district, particularly those in Ingleburn, Eagle Vale and Campbelltown areas. The education offered at Mount Carmel is very much a continuation of the education offered in these schools also under the auspices of Catholic Education, Diocese of Wollongong.

The College has a current enrolment of over 1,100 students, with approximately 120 teaching and support staff to cater for the religious, academic, social, emotional and physical needs of the students. Among the staff there have been members of religious congregations, namely the Marist Brothers, the Sisters of St Joseph and the Presentation Sisters. From 1986 until 2001 the Marist Brothers took responsibility for the leadership of the College. The first Lay Principal commenced in 2002, and our current Principal, Mr Stephen Lo Cascio, commenced at Mount Carmel in 2018.

The College is situated in a strong Carmelite area, within the boundaries of Our Lady of Mount Carmel Parish administered by the Carmelite Order. Not far from the College is the Carmelite Retreat Centre.

History

In 1985 our Year 7 students began on site at a neighbouring Catholic school and in 1986 moved to Varroville. The school began to provide Catholic secondary education for the quickly expanding population in the Northern suburbs of the Macarthur region. The founding Principal, Br Clarence Cunningham, and the early staff family, promoted the Marist traditions of family spirit, simplicity and dedication, values that are still honoured at the College today.

The College has grown in size each year, with the first Year 12 Higher School Certificate group graduating in 1990. Buildings have been added to keep pace with the rapid growth and the changing demands of the curriculum. In 2015 the new La Valla Trades Skills Centre became operational - providing state-of-the-art hospitality facilities. In 2022, a major building and refurbishment program began with the commencement of a new two-storey STEM Centre which was completed in April 2024.

Throughout its 30 plus year history, Mount Carmel has enjoyed the strong support of a vibrant parent body and of the local community. At the same time, it has taken its rightful place in various endeavours held on a local, diocesan, state and national level. Students have been proud to represent the College in a number of pursuits of a religious, academic, cultural and sporting nature.

Mount Carmel continues to be a vital educational enterprise, seeking to preserve what is of most value in educational traditions, as well as attempting to meet the urgent needs of the time for the students; this includes the effective use of learning technologies within the teaching and learning of its students.

Aims of the College

The primary aim of Mount Carmel is to nourish the faith development and the spiritual formation of our students whilst providing a quality academic and social education. Therefore, it is an environment where the religious aspects of the College are given top priority, and where these aspects underpin all areas of life at Mount Carmel. Mary, as the model Christian, is our inspiration as we strive to develop a personal relationship with Christ.

Quality Marist Education

The Quality Marist Education statement below highlights key aspects of the College which are explained at various points across the College year. It highlights key tenets, aims and challenges for staff and students alike.

Quality Marist Education

Marcellin inspired,
Christ *Centred*

Quality Education

- High Expectations
- Personal Best
- Contemporary Learning
- Engagement

Presence
Love of Work
Family Spirit
Simplicity
In the Way of Mary

The Challenge

- "Walk in Truth"
- Make a Difference
- Learn
- Love
- Flourish

Relationships and Responsibilities

Teachers	Students	Parents
<ul style="list-style-type: none"> • Lead by example • Know their students • Know their subject/s • Are enthusiastic 	<ul style="list-style-type: none"> • Open to learning • Actively engaged • Collaborative • Respectful 	<ul style="list-style-type: none"> • In partnership • Communicative • Supportive • Encouraging

The Mount Carmel Journey

Year 7		Year 12
<ul style="list-style-type: none"> • College Culture • Pride • Conduct • Uniform/Grooming • Good Manners 		<ul style="list-style-type: none"> • Global Citizens • Knowledgeable • Values for Life • Skills for Life • Resilience

Marian Flavour

Mount Carmel reflects a Marian flavour from two perspectives. The College draws its name from Mary, the Mother of Jesus, under the title of Our Lady of Mount Carmel. We recognise her as the first disciple of Jesus and as one who can show us how to live life to the full.

Strong Marist characteristics have been implanted at Mount Carmel by the presence of Marist Brothers from its inception until 2001. From the beginning, the College reflected many of the personal qualities of St. Marcellin Champagnat himself: a genuine love for the individual; a concern for family spirit; a lack of pretence and show; an outreach for those with particular needs; a passion for excellence and hard work. These values continue to be espoused through the living out of the five Marist characteristics of Presence, Love of Work, Family Spirit, Simplicity and In the Way of Mary.

The connection to the Carmelite Fathers at Varroville gives Mount Carmel a basis of the notion of contemplation and service in the way of Mary. As a focus, the College lives by the idea that we can more easily get to Jesus through Mary.



ENROLMENT INFORMATION

A MESSAGE FROM OUR ASSISTANT PRINCIPAL

Here at Mount Carmel Catholic College, we place a significant focus on the quality of the partnerships that exist between the College and our parent community. We acknowledge the role of the parents as the first and foremost educators of their children and therefore do our utmost to ensure their engagement in their child's journey throughout their secondary schooling. We also appreciate the significance of the decision that you are currently facing with regards to the most appropriate educational setting for your son or daughter as they transition beyond their primary years and into a secondary context.

With these realities in mind, this document has been composed to ensure that parents who decide to proceed with an enrolment application at Mount Carmel Catholic College, are doing so with a sound understanding and appreciation of all that the College has to offer:

- A rigorous Religious Education curriculum which is complemented by an extensive array of opportunities to nurture the spiritual journey of all students whilst drawing them in to an authentic encounter with Christ and the broader Church community.
- A broad array of subject offerings that not only cater to the diverse range of interests that exist among our student body, but are delivered by quality teachers who continuously strive to cater for the dynamic learning needs of all students.
- A Pastoral Care program that is focused on developing the whole person, appreciating the dignity, value and uniqueness of each individual, while promoting student responsibilities, the development of quality interpersonal relationships and the setting of high expectations for all.
- A diverse co-curricular program that allows us to celebrate an ever-increasing array of talents that exist among our student population and ensuring that each student's Mount Carmel experience extends well beyond the confines of the classroom.
- A culture of respect and support for the high expectations that the College asks of students in their presentation (uniform, grooming etc.); engagement in learning and respectful relationships with others.

It is with these realities in mind that I commend this document to you. The pages that follow elaborate on each of these areas so that your decision to seek enrolment at Mount Carmel is as informed as possible. Please take the time to carefully peruse these pages with your child so that they too are making an equally informed choice regarding their secondary education and are prepared to commit themselves to all that it means to be a student at Mount Carmel Catholic College.

With warm regards,

Ms Samantha Giles
Assistant Principal



ENROLMENT INFORMATION

RELIGIOUS EDUCATION & CATHOLIC LIFE

In its broad context, Religious Education at Mount Carmel is concerned with addressing the students' growth in faith. The journey of faith involves the continuous conversation with Christ; it is a life journey, of which Mount Carmel is a part of that process for a short period in the lives of the students.

Prayer & Liturgical Experiences

As a Catholic College, Mount Carmel provides many opportunities for prayer and liturgy to enable students to experience the presence of God within themselves and within the College community. Prayer is very much in evidence in the daily life of the College. The day begins with prayer in Pastoral Class. All College, Year Group and House assemblies have prayer as their start and basis for success. There is always prayer in times of need (for example, sickness in the family), whilst all major staff meetings are opened with a call to God to bless proceedings. The Marian Chapel is a special place of prayer.

The liturgical life of the College focuses on the celebration of the Eucharist and other liturgies throughout the year. There are opportunities for the whole College to gather and celebrate such as the Opening College mass, Champagnat Day, Our Lady of Mount Carmel feast day and Year 12 Graduation Mass. Each house in turn prepares and participates in its own special liturgy once a year. Other occasions for special liturgies include Ash Wednesday, Easter, Anzac Day and Advent leading into Christmas.

Youth Ministry & Social Justice Experiences

Youth ministry seeks to evangelise young people through their engagement with the Gospel to encounter Jesus. Youth ministry events including Live and Reflection Days, students are given the opportunity to explore and deepen their faith through participating in spirituality days and to improve their own leadership skills through being a Youth Ministry Leader at the College.

A commitment to social justice is an essential characteristic of a life lived according to the gospel of Jesus Christ. The church's work for justice and peace is an essential part of its role. This work is not an option to be chosen according to individual interest and inclination. It is, rather, a responsibility incumbent of all the followers of Jesus.

Social justice is woven into the fabric of the different charitable activities at Mount Carmel; designed to give the students the chance to be enlightened about those in need within our society. Initiatives include Project Compassion, Winter Sleepouts and Christmas gifting.



ENROLMENT INFORMATION

CURRICULUM

Mount Carmel is a comprehensive College for students in Years 7 to 12. Within its basic operation, the College offers a holistic education for all students. Courses offered at Mount Carmel are as follows:

Years 7 and 8: Religion (Catholic Studies), English, Mathematics, Science, History, Geography, Technology, Personal Development, Health and Physical Education, Language (Spanish/Italian), Music and Visual Arts.

Years 9 and 10: Religion (Catholic Studies), English, Mathematics, Science, History, Geography, Personal Development, Health and Physical Education.

Electives: Mount Carmel offers a variety of electives in Stage 5 (Years 9 and 10) including Child Studies, Commerce, Dance, Drama, Design and Technology, Food Technology, Geography Elective, Graphics Technology, History Elective, Industrial Technology Timber, Information Software Technology, Italian, Music, Spanish, Physical Activity and Sport Studies, Textiles Technology, Visual Arts.

Years 11 and 12: Mount Carmel offers a comprehensive range of courses to cater for the needs of all students. Students can choose from a number of Board Developed, Content Endorsed and Vocational Education and Training (VET) courses. External VET courses are also available.





ENROLMENT INFORMATION

PASTORAL CARE

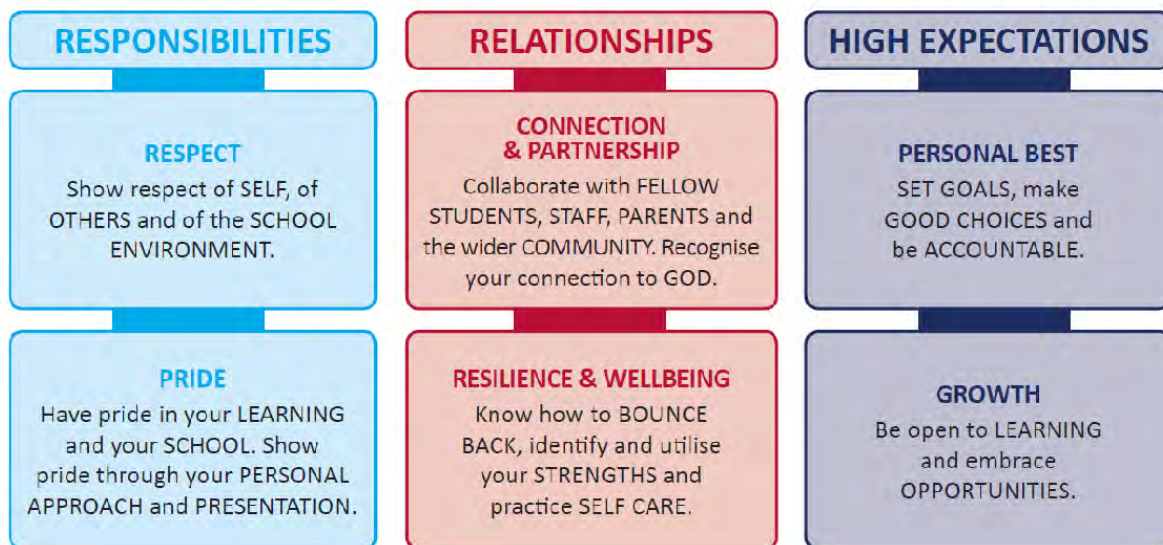
Pastoral Care & Wellbeing

Mount Carmel is wholly committed to each person within the College community - students, staff, parents and guardians. This commitment is grounded in an appreciation of the dignity, value and uniqueness of every individual who is created in the image of God. Mount Carmel's approach to Pastoral Care and Wellbeing is based on a framework of Responsibility, Relationships and High Expectations, and is supported by the CEDoW Pastoral Care and Wellbeing Policy.



PASTORAL CARE

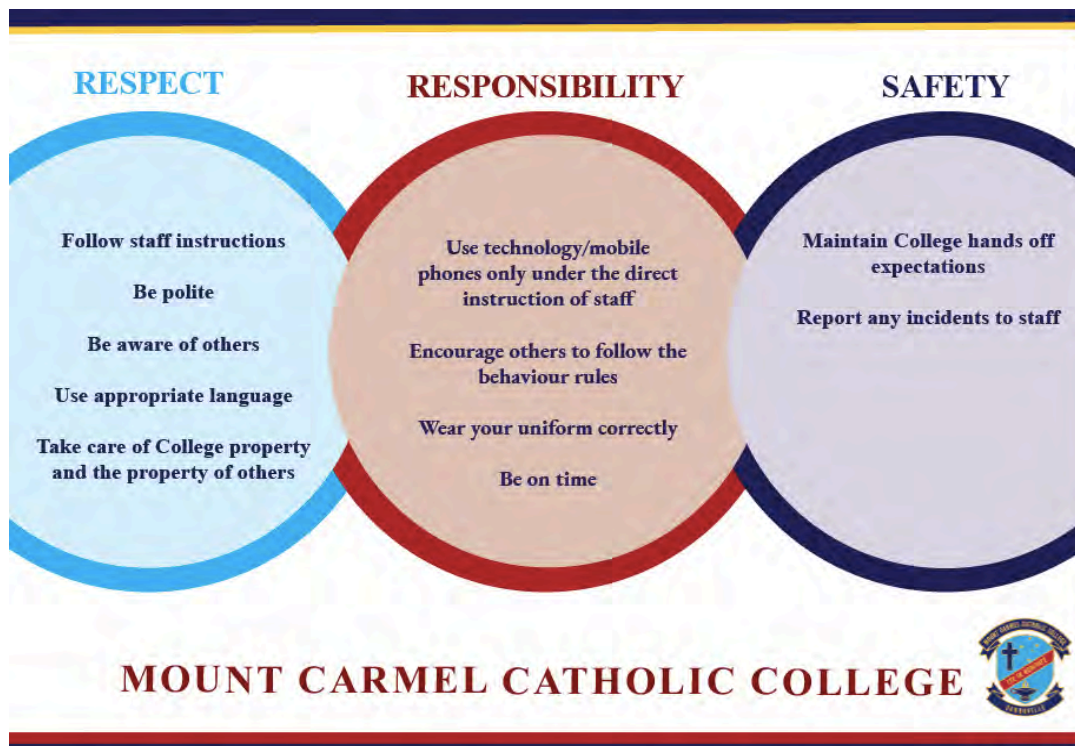
Promoting Safety and Growth



It is through the interaction of each of these key elements that students are provided with opportunities to explore, excel and grow in all areas of their life, be it social, intellectual, spiritual, emotional or physical. Central to the provision of Pastoral Care are our Year Coordinators, Assistant Year Coordinators and Pastoral Advisors. Organisation, time management, resilience, responsible technology use, relationships, goal setting, careers guidance, bullying and harassment, positive behaviour for learning, growth mindset and communication with parents/guardians are just some of the responsibilities of Year Group Team. In addition, *Catholic Care* counselling staff are available at the College to assist any students who may require a level of emotional or wellbeing support that cannot be met within the confines of the classroom.

Walking in Truth - Positive Behaviour for Learning (PB4L)

Our behaviour policy is reflective of the Positive Behaviour for Learning Framework (PB4L). This framework for behaviour enhances respectful relationships and engagement of students in their learning. PB4L is an evidence-based, three-tiered organisational framework for behaviour to enhance respectful relationships and engagement of students in their learning. PB4L is centred around the key concepts of Respect, Responsibility and Safety.



The College has established a very successful culture of wellbeing and learning and will not tolerate behaviours which are contrary to our Catholic ethos or those which are detrimental to the safety and growth of any member of our community.

Merit Awards

High expectations are placed on student behaviour both inside and outside of the classroom and recognition is given to those students who make a positive contribution to the day to day life of the College. Students are recognised for their efforts regarding academic application and performance, attendance, grooming, collaboration in class, support of others, sporting achievements, social justice, liturgical and environmental contributions. The cumulative total of these positive actions coupled with the results of our three major carnivals are then compiled to award the House Trophy at the end of each HSC year.

Bullying & Harassment

Bullying is an ongoing and deliberate misuse of power in relationships through repeated verbal, physical and/or social behaviour that intends to cause physical, social and/or psychological harm. It can involve an individual or a group misusing their power, or perceived power, over one or more persons who feel unable to stop it from happening. Bullying can happen in person or online, via various digital platforms and devices and it can be obvious (overt) or hidden (covert). Bullying behaviour is repeated, or has the potential to be repeated, over time (for example, through sharing of digital records). Bullying of any form or for any reason can have immediate, medium and long-term effects on those involved, including bystanders. Single incidents and conflict or fights between equals, whether in person or online, are not defined as bullying.

Harassment is behaviour that targets an individual or group due to their identity, race, culture or ethnic origin, religion, physical characteristics, gender, sexual orientation, marital, parenting or economic status, age, ability or disability. It offends, humiliates, intimidates or creates a hostile environment. It may be an ongoing pattern of behaviour or a single act directed randomly or towards the same person(s) intentional or unintentional. Intimidating, threatening or bullying behaviour is not acceptable at the College. Excuses such as “we were only joking” or “just mucking around” are not acceptable. If you or your child feel that they are a victim of bullying or harassment at Mount Carmel Catholic College, please notify a member of staff immediately.

Behaviour Management

A range of possible consequences are in place for students who find it difficult to abide by the expectations of our *Pastoral Care Policy*. All members of staff are responsible for managing student behaviours in the classroom and playground on a daily basis. Behaviours are categorised into the following levels:

- *Low level behaviours* include disrupting the learning of others, breaking general classroom rules, being late to class without explanation, incomplete homework, not wearing the uniform correctly, using inappropriate language. Low level behaviours are dealt with by class/playground teachers and may include consequences such as a note in the diary, recess or class detention or a phone call/email home.
- *Medium level behaviours* include academic malpractice and plagiarism, repeated disruption to learning or inadequate effort in class, disrespect towards students or staff, truancy, insolence or disobedience, significant or repeated uniform and/or grooming infringements and violation of others personal space or property. Medium level behaviours are dealt with by Middle Leaders and may include consequences such as daily or weekly monitoring sheets, restorative conferencing, or parent/carer meetings.
- *High level behaviours* include fighting, bullying and harassment, bringing dangerous items to school, cigarette/drug or alcohol use, possession or distribution, forging signatures on permission notes, repeated truancy, vandalism, poor behaviour on buses, theft, inappropriate hairstyles and/or grooming, inappropriate use of technology (including pornography), leaving the College grounds without permission. High level behaviours are dealt with by the Pastoral Care and Wellbeing Coordinator, Assistant Principal and/or Principal and may involve consequences such as parent meetings, withdrawal from classes, suspension, performance contracts, police notification, expulsion from Mount Carmel and/or exclusion from Diocesan systemic schools.

All behaviours are dealt with according to *CEDoW Student Pastoral Care and Wellbeing Policy and Procedures*.

Class, recess and after school detention are an important part of the College's behaviour management procedures. As outlined above, these detentions may be part of a consequence for a particular inappropriate behaviour, but may also be an important part of the restorative and reflection process where students and staff are able to find an appropriate time and place to discuss and develop methods of redirecting behaviours towards a more positive outcome.

Confiscation of Student Property

Students are expected to have all books and equipment to enhance their learning processes. Students must not bring along valuable personal property, items that will inhibit their learning opportunities, dangerous items (see 'Banned Items' below) or any item prohibited by NSW law (e.g. tobacco, alcohol, knives, weapons or drugs). Any breach of this policy will result in the items being confiscated and/or a range of possible consequences.

Mobile Phones

The College takes no responsibility for the safekeeping of mobile devices. Mobile phone and device use is prohibited between 8:40am and 3:15pm each day and should be turned off during this time. Mobile devices are not to be a disruption to learning. Parents/guardians or students who need to be in contact are encouraged to do so by contacting the Front Office or respective Year Coordinator.



ENROLMENT INFORMATION

UNIFORM/GROOMING EXPECTATIONS



MOUNT CARMEL CATHOLIC COLLEGE

COMPULSORY ITEMS

Girls' (Years 7 to 9)



COMPULSORY ITEMS

Boys' (Years 7 to 9)



COMPULSORY SPORTSWEAR



OPTIONAL ITEMS



MOUNT CARMEL CATHOLIC COLLEGE

COMPULSORY ITEMS

Girls' (Years 10, 11 & 12)



COMPULSORY ITEMS

Boys' (Years 10, 11 & 12)



COMPULSORY SPORTSWEAR



OPTIONAL ITEMS



RANIER

RANIER DESIGN GROUP
creating uniforms to excite inspire and unify

Sports Uniform - All Students

- Mount Carmel shirt, shorts and socks to be worn for Tuesday sport days, PDHPE lessons and all College carnivals
- Mount Carmel sports jacket and college tracksuit pants may be worn on sport days only
- If full sports uniform is not worn on sports days, then normal College uniform is to be worn to and from the College
- Appropriate runners or cross-training sport shoes with arch support. Canvas or leather shoes with a flat sole (e.g. Converse or Volleys), skate shoes and/or slip-ons are not acceptable.

Grooming - Girls

- Hair must be tidy and neither grown nor groomed in an extreme or exaggerated fashion. Hair needs to be well brushed, combed and tidy. Extremes of cut, dyeing/foils, gels, mousse, sprays and steps must not be used
- Hair must be of a natural colour and in such a condition that it does not invite comment
- Ribbons (cardinal red, navy blue or white) are to be used to tie back hair longer than collar length
- No patterns or lines are to be shaved into the scalp or eyebrows
- Hair should not obscure the face. No fancy clips or hair accessories

Grooming - Boys

- Hair must be of a natural colour, tidy and neither grown nor groomed in an extreme or exaggerated fashion
- The following are not allowed – steps, undercutting, dyeing, layering, colour variations, gels, too long (over collar and/or ears), obscuring the face or eyebrows, or too short. Hair may not be tied up
- Extremes of cut, dyeing, gels, mousse and sprays must not be used
- Nothing below a #2 gauge/blade (unless a medical condition exists) is acceptable and no patterns or lines are to be shaved into the scalp or eyebrows. Changes in length should be blended
- Hair must be in such a condition that it does not invite comment
- All boys must be clean-shaven

Additional Notes - Girls

- No jewellery except a watch. No wrist bands or rings are to be worn
- Earrings gold or silver studs (maximum diameter 5mm) for those with pierced ears are permitted (only one set of earrings are allowed, and they are to be worn in the lower lobe). Thin, plain gold or silver sleeper earrings of no more than 10mm diameter may also be worn. No clear studs to be worn. No facial piercings are permitted
- Wearing a silver or gold neck chain with a Christian religious symbol is permitted provided it is not showing over the uniform
- No nail polish, acrylic nails or makeup to be worn. Nails to be kept trimmed to a suitable length. False eyelashes or eyelash extensions are not permitted
- Additional underclothing must be plain white and not visible
- There must be no visible body art (tattoos/henna etc) of any description

Additional Notes - Boys

- No jewellery except a watch. No wrist bands to be worn
- No body piercings or earrings to be worn (including clear studs)
- Wearing a silver or gold neck chain with a Christian religious symbol is permitted provided it is not showing
- Additional underclothing must be plain white and not visible
- College hats must be worn in any open areas in the College, this includes on the oval (including under trees) and in the movement to and from shaded structures. Mount Carmel strongly encourages the wearing of official College hats to and from the College
- There must be no visible body art (tattoos/henna etc) of any description

Hats - All Students

- College hats must be worn in any open areas in the College, this includes on the Oval (including under trees) and in the movement to and from shaded structures



ENROLMENT INFORMATION

CO-CURRICULAR

Co-curricular Options at Mount Carmel

The religious and academic curriculum at Mount Carmel is supported by a strong co-curricular program as we endeavour to ensure that a student's education is holistic. To develop this aspect of learning, students are encouraged to participate in the many co-curricular activities available.

Sport & Recreation

Sport and recreation play an important part in College life. The vast majority of students at secondary College age are naturally interested in sport, and so this is an avenue where they can be actively involved, and where staff and students can interact outside the classroom setting.

There is a sound balance between sports of a traditional nature and those with a more recreational flavour. A respect for, and enjoyment of, physical health and wellbeing are encouraged through the many competitive and social sports. Excellent sporting facilities are available within the College grounds.

Mount Carmel is a member of:

- MISA (Macarthur Independent Schools' Association)
- Diocesan (Diocese of Wollongong)
- NSWCCC (Combined Catholic Colleges)

Students selected to represent the College in these competitions are expected to take part enthusiastically and unselfishly as a contribution to the College community. The MISA competition is held locally on a Tuesday afternoon.

Diocesan competition events are held fairly regularly on other days of the week, at different venues around the Diocese of Wollongong. From this competition, students can progress in some selected sports to competitions at State and National levels.





ENROLMENT INFORMATION

BRING YOUR OWN DESIGNATED DEVICE (BYODD)

Mount Carmel is committed to helping students develop 21st Century technology and communication skills. The adoption of the Bring Your Own Designated Device (BYODD) program allows Mount Carmel to plan for what devices are brought to the College, maintain consistency in our approach to teaching and learning and monitor devices to ensure safety and appropriate use.

Further benefits of the BYODD program include:

- The hardware specifications set out by the College ensure devices have the necessary capability, reliability and performance to function within the learning environment
- Teachers are all equipped with the same technology and are able to plan lessons and learning experiences based on the knowledge and confidence that all students will be able to access materials applicable to their chosen area of study.
- Students can be confident that they can access all materials in class, the same as their peers and charging and printing stations around the College can be utilised when needed.
- The ICLT department is able to support students with a range of technical issues and render assistance with processing warranty and non-warranty repairs with an Apple Certified repairer.
- If an accident occurs and device maintenance or repair is required, Mount Carmel will assist by ensuring that your child receives a loan machine, whilst awaiting the return of the device.
- Monitoring by teachers, in conjunction with the ICLT department, to ensure that the device is being used effectively as a tool for learning and improving educational outcomes.
- Where inappropriate use is found, Mount Carmel will follow this up in line with *Technology Policy* and our *Pastoral Care* program.

It is compulsory that all Mount Carmel students in the junior school have an *Apple MacBook Air* or *Apple MacBook Pro* laptop, which is brought to school each day fully charged and in working order ready to assist in their educational journey at the College. All students are assigned a Google Drive back-up and storage facility with 500GB of space, therefore extra portable storage drives are not necessary.

Whilst you have the option of a supplier and we welcome that choice, for your convenience, Mount Carmel has aimed to streamline this process by providing access to a portal hosted by *EduCom IT* via our College website. Please note that the College does not receive any financial benefits relating to your choice of supplier. **We further strongly recommend that families purchase *AppleCare+*, which is an essential warranty that covers the device for up to three years from the purchase date and includes unlimited incidents of accidental damage protection within the warranty period.** Purchasing *AppleCare+* warranty significantly reduces the cost of repairs in the event the laptop is damaged.

Repair of accidental damage is subject to a service fee (an excess payable based on the type of damage) that is dependent on the type of damage. As an example, to repair a damaged screen, the cost for a device covered under *AppleCare+* warranty is \$149, without *AppleCare+* warranty you can expect to pay between \$750 - \$1000. *AppleCare+* can be purchased through an authorised Apple reseller or directly through Apple four days after the purchase of the laptop.

In the event that *AppleCare+* is not purchased for the device, it may be worth considering the option of adding the device to your existing contents insurance. It is also imperative that a good quality hard plastic clip on case is purchased and attached to the device to reduce the risk of serious damage.

Device Usage & Repair

As part of our policy involving technology use at Mount Carmel, all students continually participate in education in device usage and care. Students are required to complete a *Technology Agreement* as part of their enrolment at the College. This reminds students of their rights and responsibilities when using these devices. Mount Carmel uses web filters, firewalls and explicit teaching to keep students safe when using their devices online, however, at home, families are required to set their own boundaries around device use and time spent online. General device maintenance and software installation can be completed on site through the ICLT Department and when further repair is required, an Apple approved repairer from *EduCom IT* can repair anything under warranty and quote and repair anything that is not covered under warranty.

Device Options

The minimum requirement is a current model Apple MacBook Air or MacBook Pro laptop available at stores. You can view the current models available on the market through the *EduCom IT* portal (*AppleCare+* is an additional cost), which can be viewed via the link below, where you will need to select the *Mt Carmel Catholic College Technology Portal*.

<https://www.educomit.com.au/dow>

Model	Price
M2 13-inch MacBook Air	\$1,449.00
M3 13-inch MacBook Air	\$1,649 - \$2,249* <i>*depending on selected storage and memory options</i>
M3 15-inch MacBook Air	\$2,049 - \$2,649* <i>*depending on selected storage and memory options</i>
M4 MacBook Pro	\$2,349 - \$6,049* <i>*depending on selected display size, processor, storage and memory options</i>



ENROLMENT INFORMATION

ADMINISTRATION

Partnership with Parents & Guardians

All parents/guardians are strongly advised to further develop the College's community spirit by becoming active members of the Parents and Friends' Association (P&F) and its several subcommittees. Working Bees have been held twice per year with each house invited to attend one of these. Meetings of the P&F Association are held on site on the second Tuesday of each month during College term. As with all College events, we ensure we comply with all safety directives.

Office Hours

The office is open 8:00 am to 4:00 pm daily.

Attendance

Students are expected to attend Mount Carmel Catholic College on all scheduled days unless sick. All absences must be explained with a signed note from a parent/guardian, given to the Pastoral Advisor upon return, or registered as an explained absence through the Compass portal. [N.B.: The Principal may decline to accept the explanation as Satisfactory]. The Principal may grant up to 15 days leave in an academic year to students who provide an explanation acceptable to the Principal. Exemption applications are available through the College Office. Given exceptional circumstances the Principal (following a parent application) may grant an "Exemption from Attending College" for a period totalling up to 50 days in a 12-month period.

Late Arrivals & Early Departures

It is a student's responsibility to arrive at the College on time. If absent for any part of the day, either arriving late or leaving early, a parental explanatory note must be supplied. For arrivals and departures, students must go to Student Services to sign in or out. Parents or guardians should arrange to collect their child from the office on such occasions.

Communicating Messages to Students

We request that direct contact between parents and students occurs through the front office. This is to ensure that students are not distracted during the day by phone calls or text messages. It also enables the College to monitor students who may be distressed or requiring support. Due to safety reasons, parents who need to see their children during the day should do so by visiting the front office where the students can then be contacted. Parents are not permitted to simply walk onsite to visit their children.

Mobile Phones & Electronic Equipment

These are discouraged from being brought to Mount Carmel and the College can take no responsibility for the safe keeping of these items. Should it be necessary for students to have a mobile phone on them, they are not to be a distraction and must be kept on their person at all times. While there may be times a teacher deems their use as acceptable in a given period, it should be clear that mobile phones which are used inappropriately during class and/or College times may be confiscated and placed with Student Services for collection at the end of the day. Repeated infringements will result in an afternoon detention or parent meeting.

Mobile phone/device use before and/or after the College day is intended to allow students to stay in contact with home and/or play music through headphones; it is not intended for students to have free access to their device to play games, take photographs/make videos, watch movies and/or use social networking.



ENROLMENT INFORMATION

LODGING YOUR APPLICATION

The CEDoW has transitioned to a new online enrolment platform, called Funnel, removing the use of all paper forms. The online application form is accessible from the College [website](#).

Before you start

Before you start the application, please ensure that you have copies of the following ready to upload (please note if you are applying on a mobile device, you can use the camera function to submit a photo of the documentation). Wherever possible, documentation provided should be in English.

All applications:

- A clear photo of your child
- Your child's birth certificate
- Your child's immunisation history statement (Click [here](#) to find out how to access your child's statement from the Australian Immunisation Register)

Only if applicable to your child:

- Your child's Baptismal certificate (if baptised in a Catholic Church)
- Supporting documentation related to your child (e.g. medical; disability)
- Any court or parenting orders relating to your child
- Your child's two most recent school reports
- Your child's most recent NAPLAN results (a copy can be obtained from your child's current or previous school/s)

Only if your child is on a visa:

- Your child's passport
- Your child's visa documentation (Please note that we cannot accept applicants travelling on a Visitor [600] or Student [500] Visa)

Please note:

1. The *Statement of Parish Commitment* (please refer to pages 21 and 22) is to be completed on one side by the parent, and then taken to your Parish Priest or other Church Minister who will complete the *Priest Declaration*. This form will be forwarded directly to the College by the Parish Priest or Church Minister.

The final day for Year 7 2026 lodgement will be Friday 11th April 2025 at 2.00 pm.



ENROLMENT INFORMATION

MACARTHUR SCHOOLS

PREFERENCES

Please complete and return this form as part of your application.

Student's Name:

Is Mount Carmel Catholic College your only choice? Yes No

If you answered 'No' above, please list your order of preference below (1 – 7)

School	Preference
John Therry Catholic High School, Rosemeadow	
Magdalene Catholic College, Narellan	
Mount Carmel Catholic College, Varroville	
St Benedict's Catholic College, Oran Park	
St Gregory's College, Campbelltown	
St Patrick's College, Campbelltown	
St Francis Catholic College, Edmondson Park	
Other (please specify):	

Declaration

1. To the best of my/our knowledge, all details submitted in this enrolment application are true and correct.
2. I/We are aware of my/our responsibilities in regard to payment of compulsory College fees and charges and EITHER
 - a. agree to pay all such fees and charges, when required to do so.
 - OR
 - b. agree to discuss, as soon as practicable, any anticipated difficulties in regard to payment of
 - i. College fees and charges and honour any special arrangements entered into with the Principal.
3. I acknowledge receiving and reading a copy of the Uniform and Behaviour Expectations and agree to support Mount Carmel Catholic College.
4. I/We understand that in enrolling my/our child in a Catholic College, he or she will be involved in education in the Catholic Faith and am/are willing to enter into the spirit of his/her education as a student, and therefore accept its underlying principles and philosophy.
5. I/We understand that the Parents & Friends Association is available should we wish to become involved.
6. I acknowledge receiving and reading a copy of the Catholic Education Office's "Standard Collection Notice" regarding the Privacy Act.
7. I understand that Mount Carmel Catholic College reserves the right to vary or reverse any decision made on the basis of incorrect or incomplete information.

Parent/Guardian's Name:

Parent/Guardian's Signature:

Date:



ENROLMENT INFORMATION

PRIEST'S DECLARATION

To be filled in only by the Parish Priest. The information provided by the designated Parish Priest will determine which applicants are successful.

Name of Parish Priest:

.....

SECTION 1

- Family is actively involved in the parish.
- Family attends Mass regularly in the parish.
- Family attends Mass about once a month in the parish.
- Family attends Mass less than once a month in the parish.
- Family does not attend Mass.
- Family gives financial support to the parish.

SECTION 2

From your information, please select the most appropriate recommendation:

<input type="checkbox"/> Highest Recommendation:	<ul style="list-style-type: none"> ▪ regular church attendance ▪ active involvement with parish ▪ contribution to planned giving
<input type="checkbox"/> Strong Recommendation	<ul style="list-style-type: none"> ▪ regular church attendance ▪ active involvement with parish OR contribution to planned giving
<input type="checkbox"/> Recommended:	<ul style="list-style-type: none"> ▪ regular church attendance ▪ completed sacramental program.
<input type="checkbox"/> Satisfactory:	<ul style="list-style-type: none"> ▪ irregular church attendance (i.e. once a month) sacramental program incomplete.
<input type="checkbox"/> Do Not Recommend:	<p>.....</p> <p>.....</p>

Other comments:

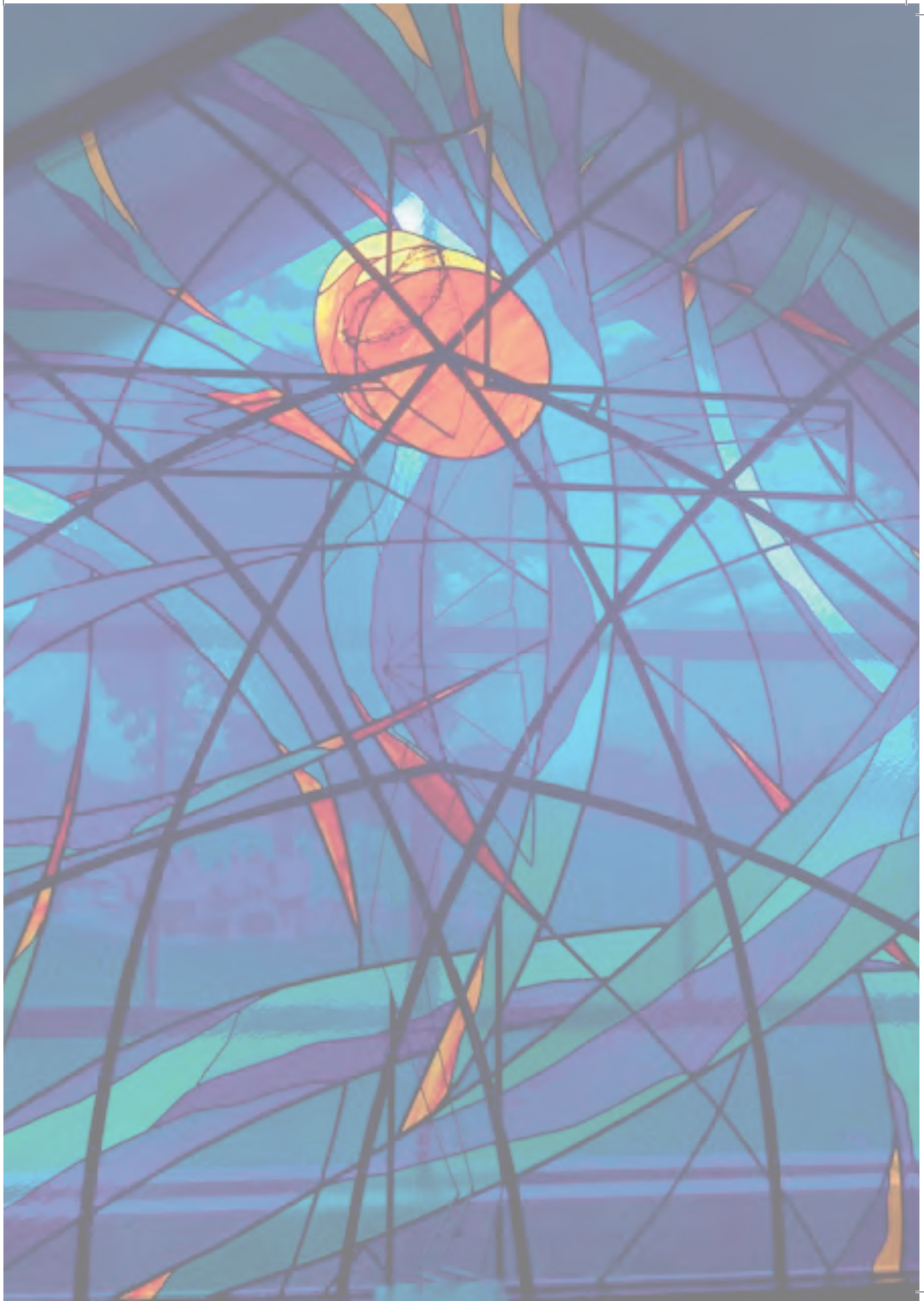
.....

.....

.....

Parish Stamp
Parish Priest
Date

Please forwarded this declaration directly to:
 Mount Carmel Catholic College | 210 Spitfire Drive, Varroville 2566 OR
 PO Box 124, Minto 2566



Mount Carmel Catholic College
210 Spitfire Drive, Varroville, 2566
(02) 9603 3000 | info@mcccdow.catholic.edu.au

