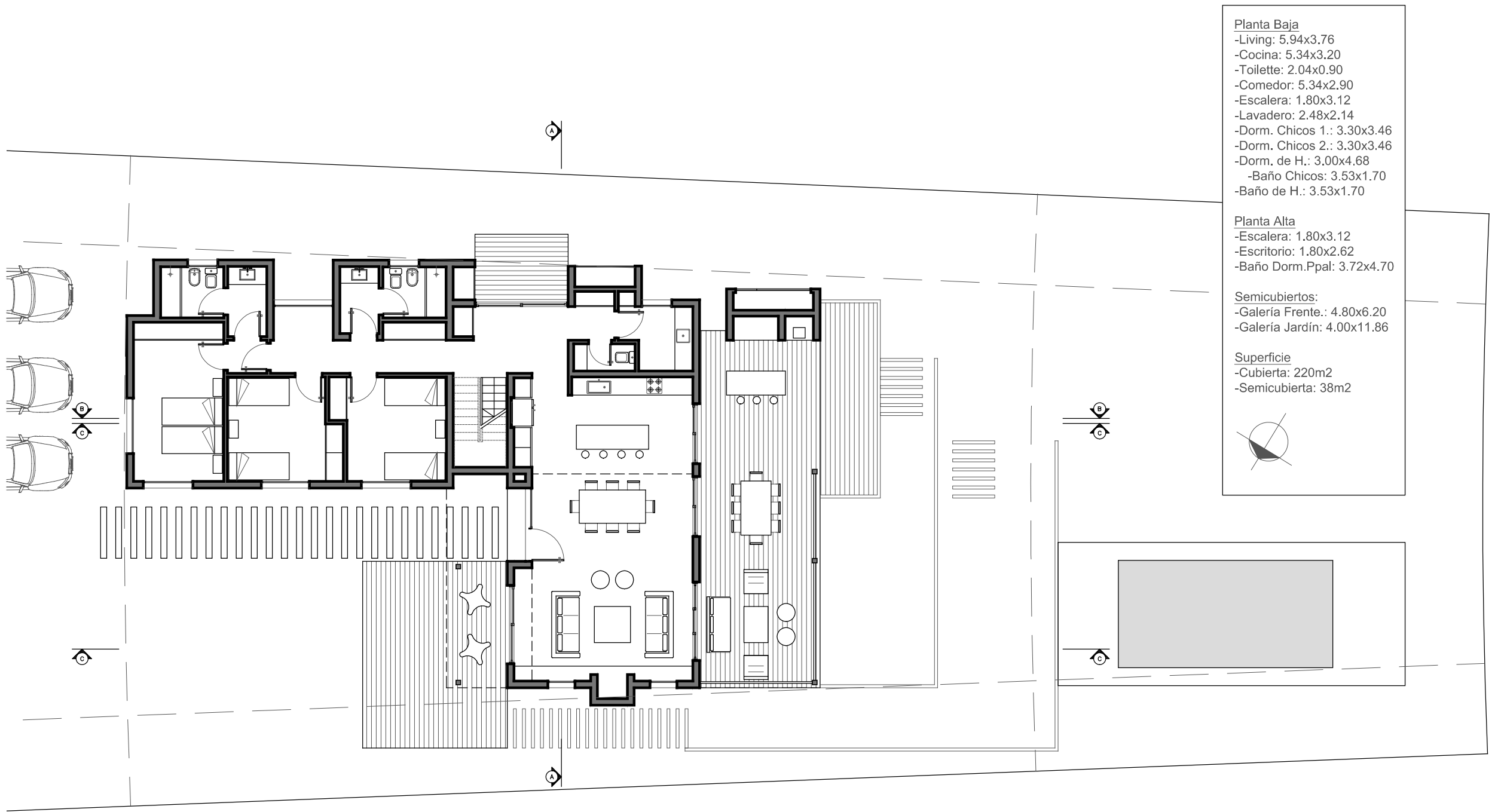


CASA LUVIR

COSTA ESMERALDA



Germán Salas arquitectos



- Planta Baja**
- Living: 5,94x3,76
 - Cocina: 5,34x3,20
 - Toilette: 2,04x0,90
 - Comedor: 5,34x2,90
 - Escalera: 1,80x3,12
 - Lavadero: 2,48x2,14
 - Dorm. Chicos 1.: 3,30x3,46
 - Dorm. Chicos 2.: 3,30x3,46
 - Dorm. de H.: 3,00x4,68
 - Baño Chicos: 3,53x1,70
 - Baño de H.: 3,53x1,70

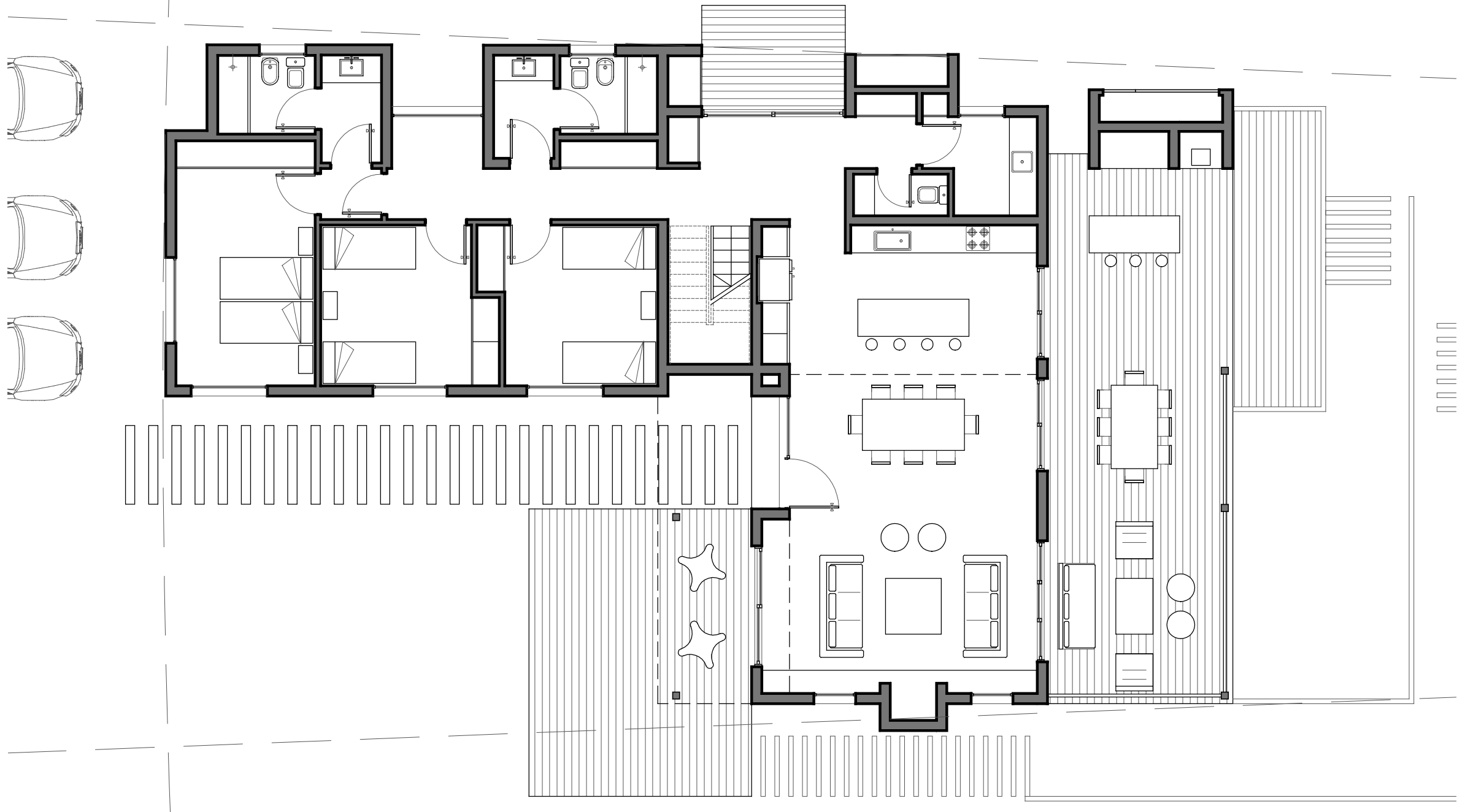
- Planta Alta**
- Escalera: 1,80x3,12
 - Escritorio: 1,80x2,62
 - Baño Dorm.Ppal: 3,72x4,70

- Semicubiertos:**
- Galería Frente.: 4,80x6,20
 - Galería Jardín: 4,00x11,86

- Superficie**
- Cubierta: 220m²
 - Semicubierta: 38m²

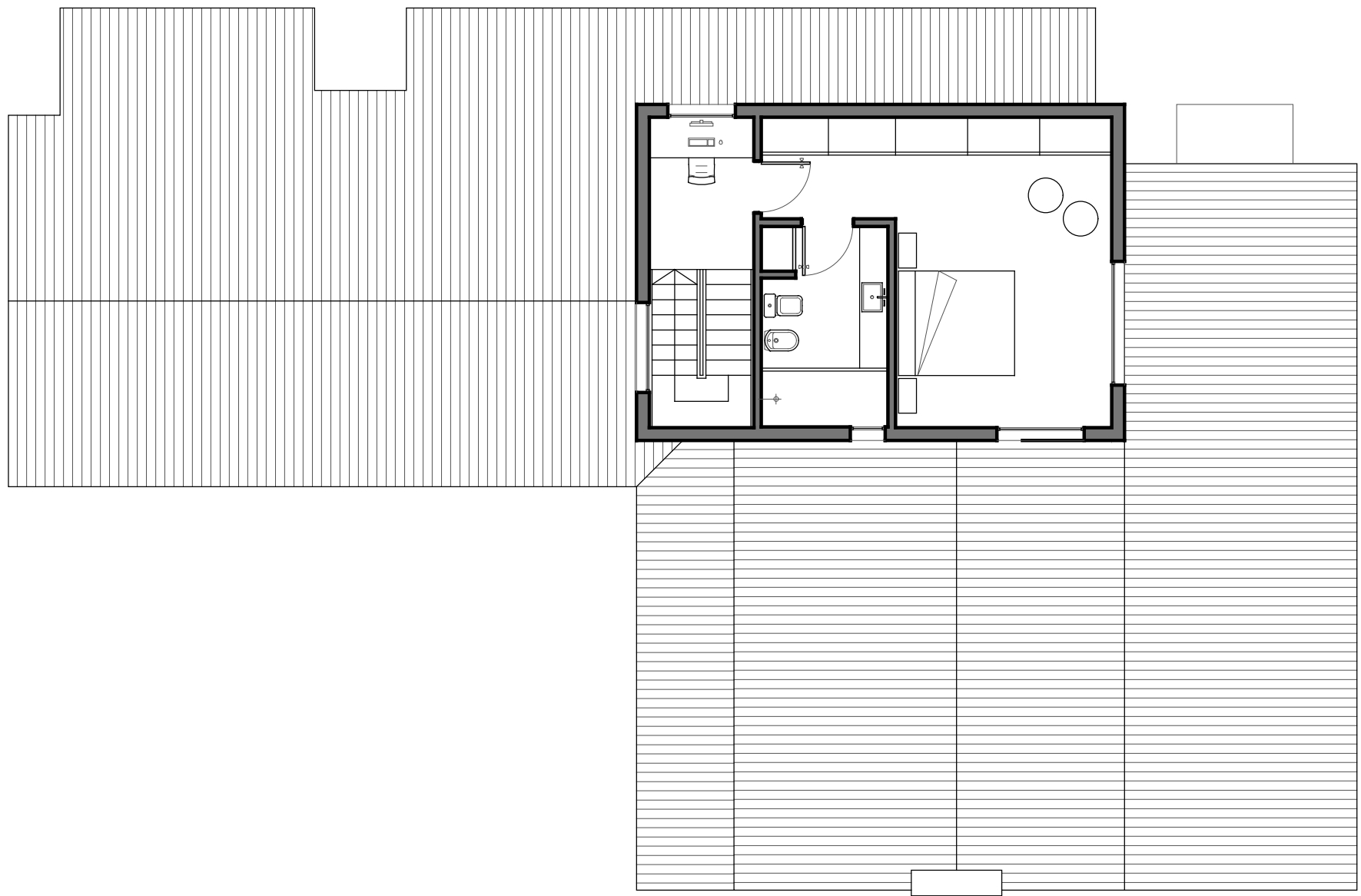


Implantación



Planta Baja



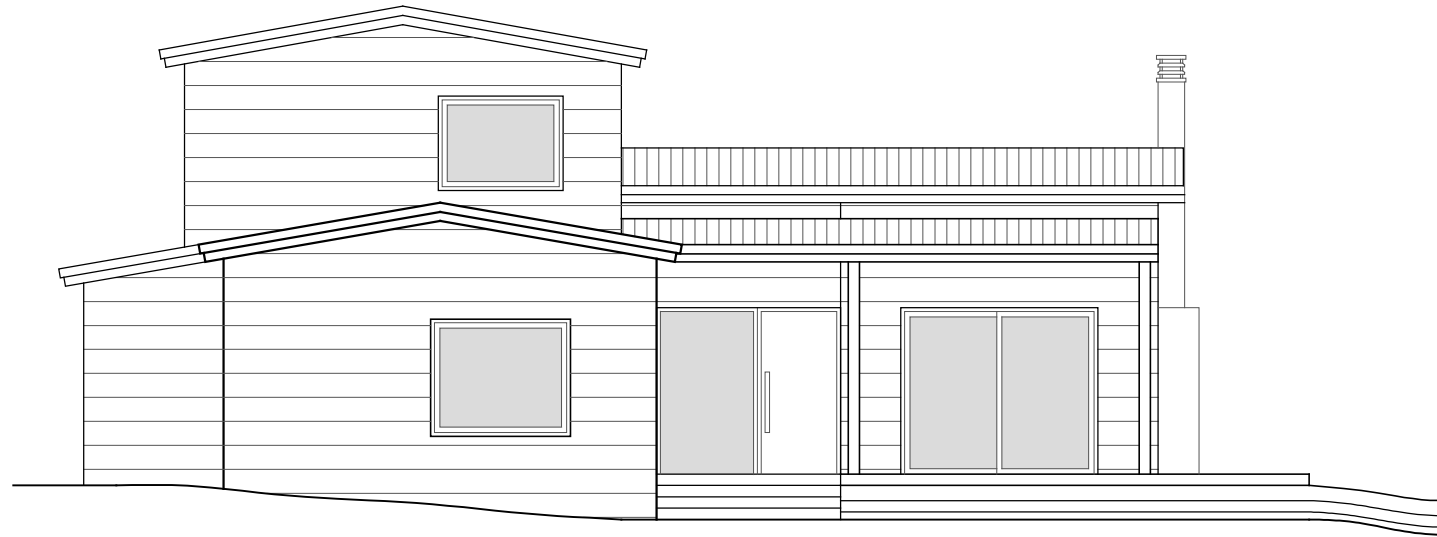


Planta Alta









Vista Frente



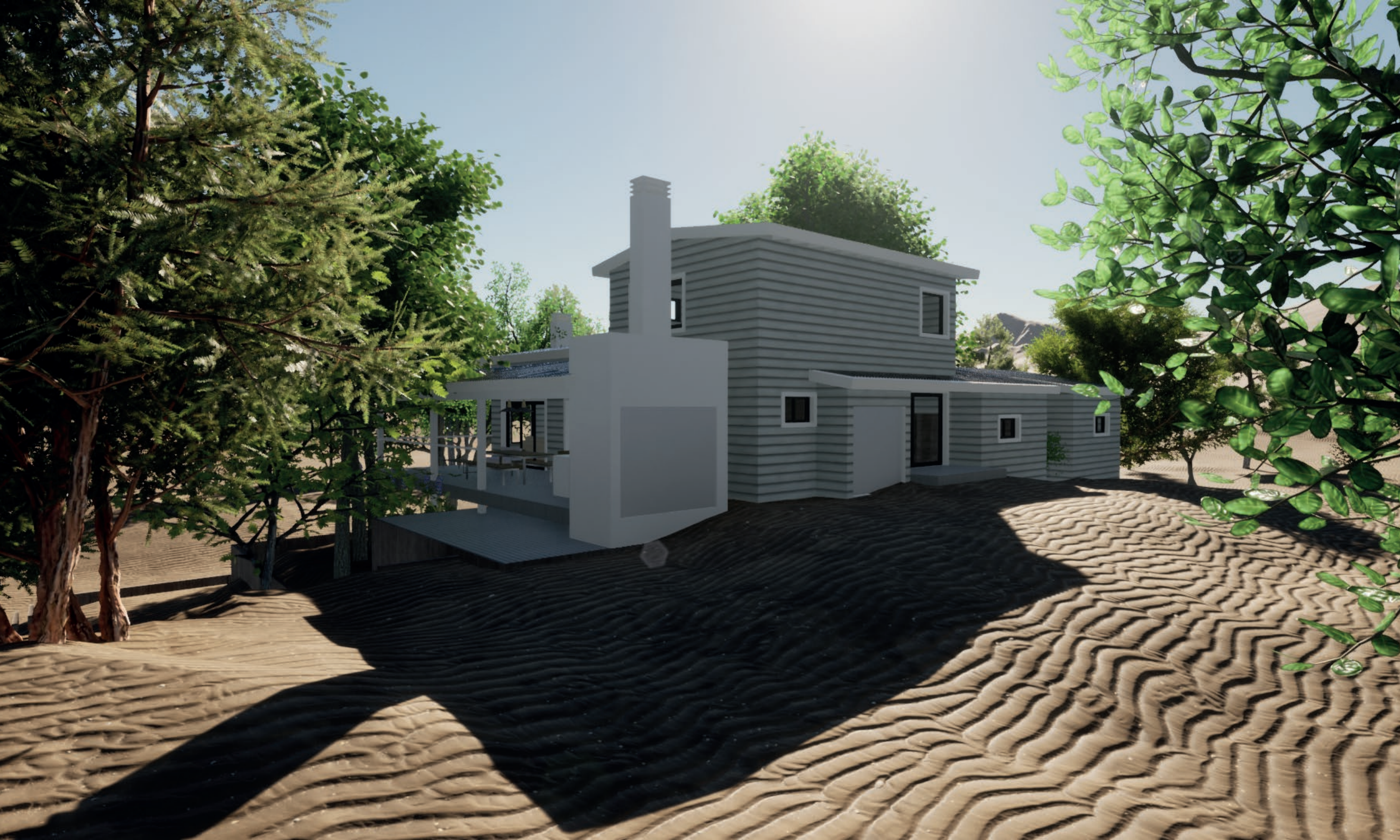


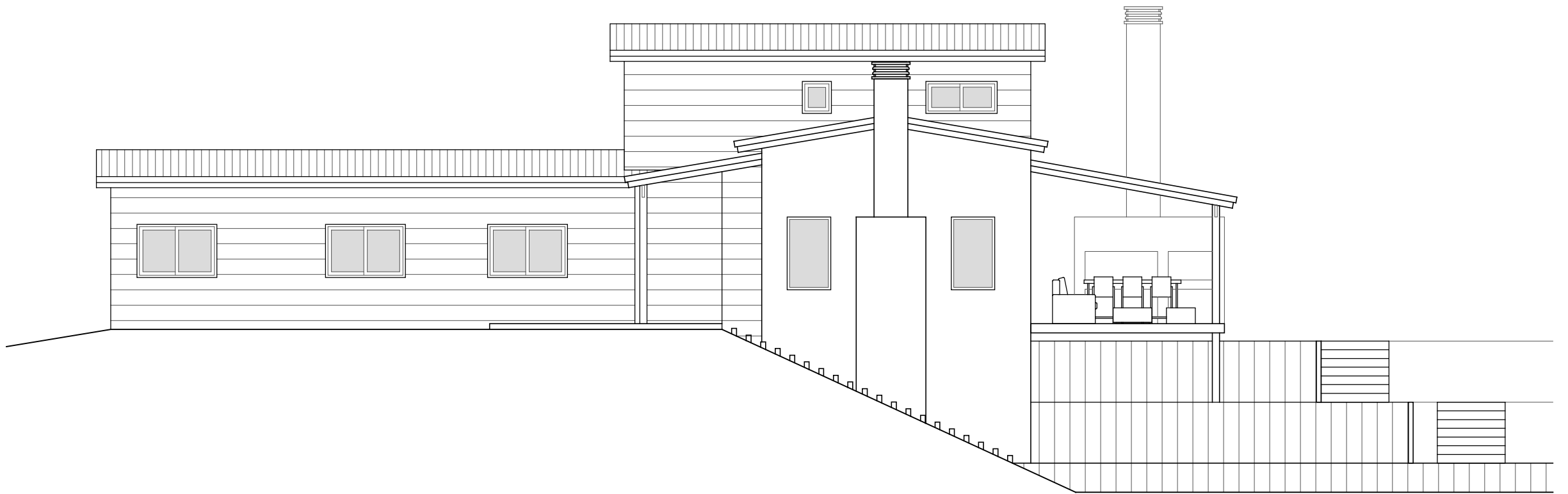
Vista Contrafrente





Vista Lateral

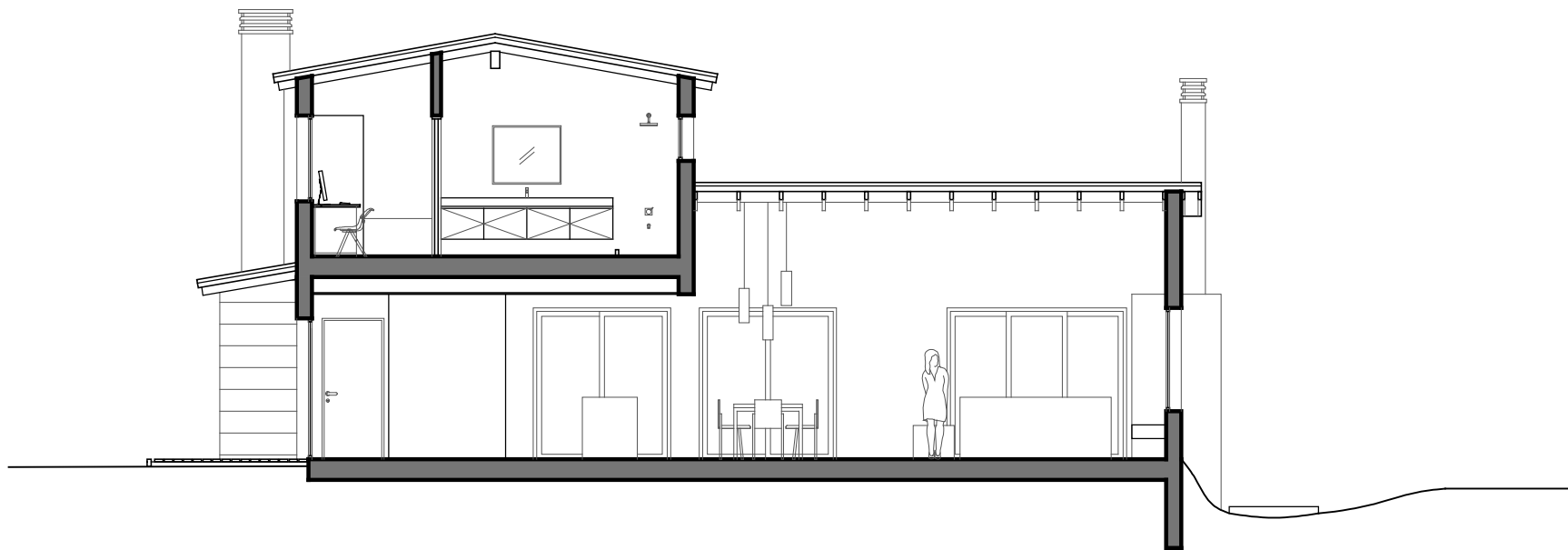




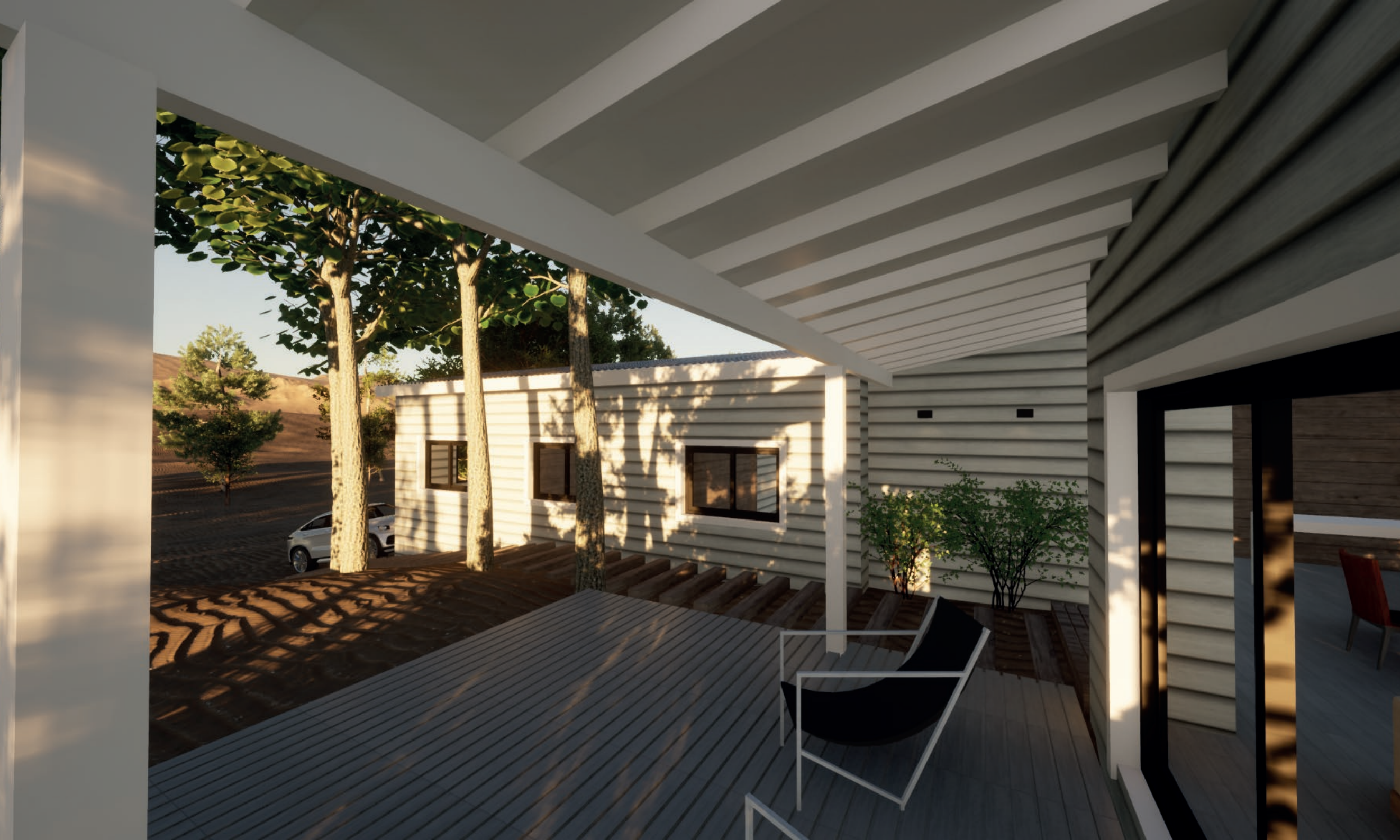
Vista Lateral





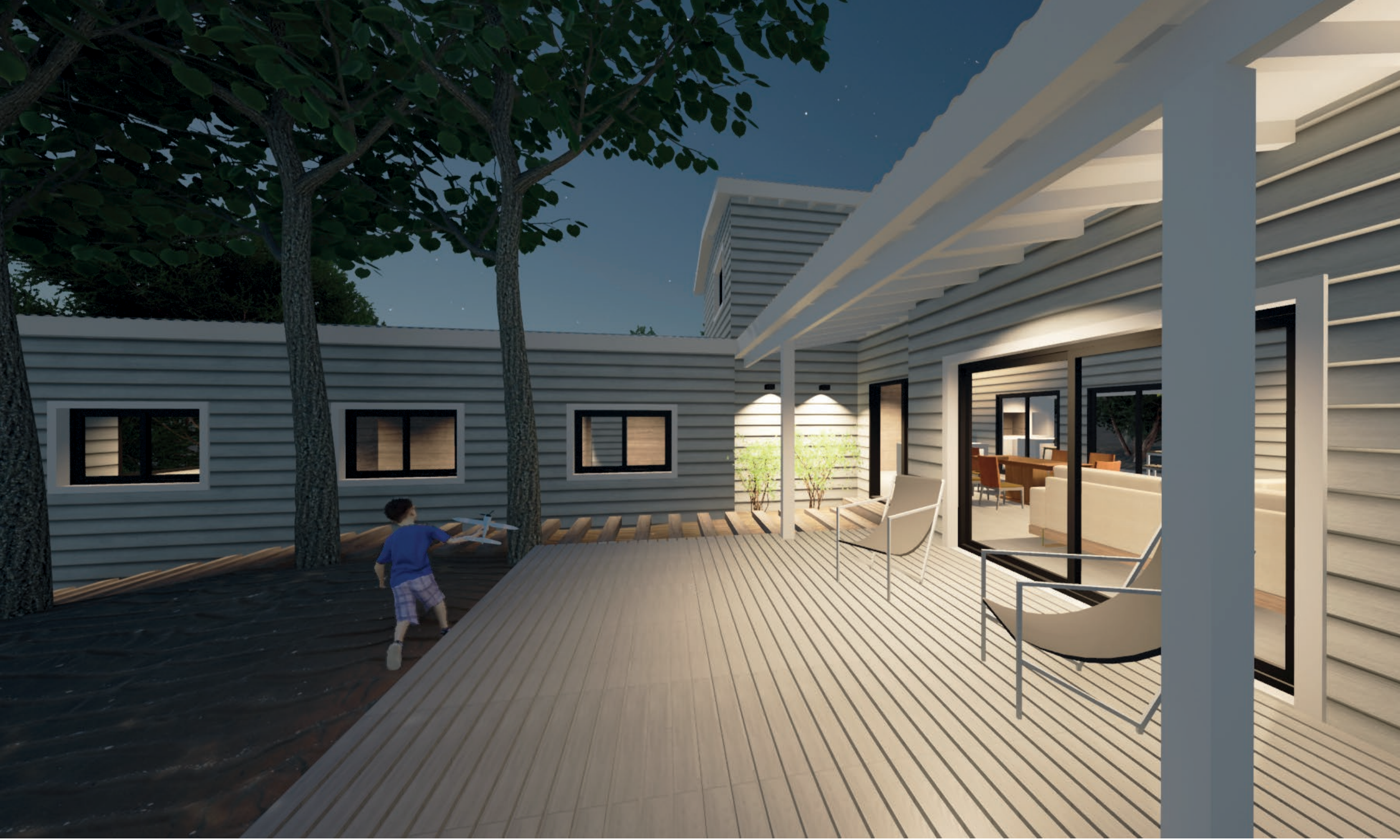


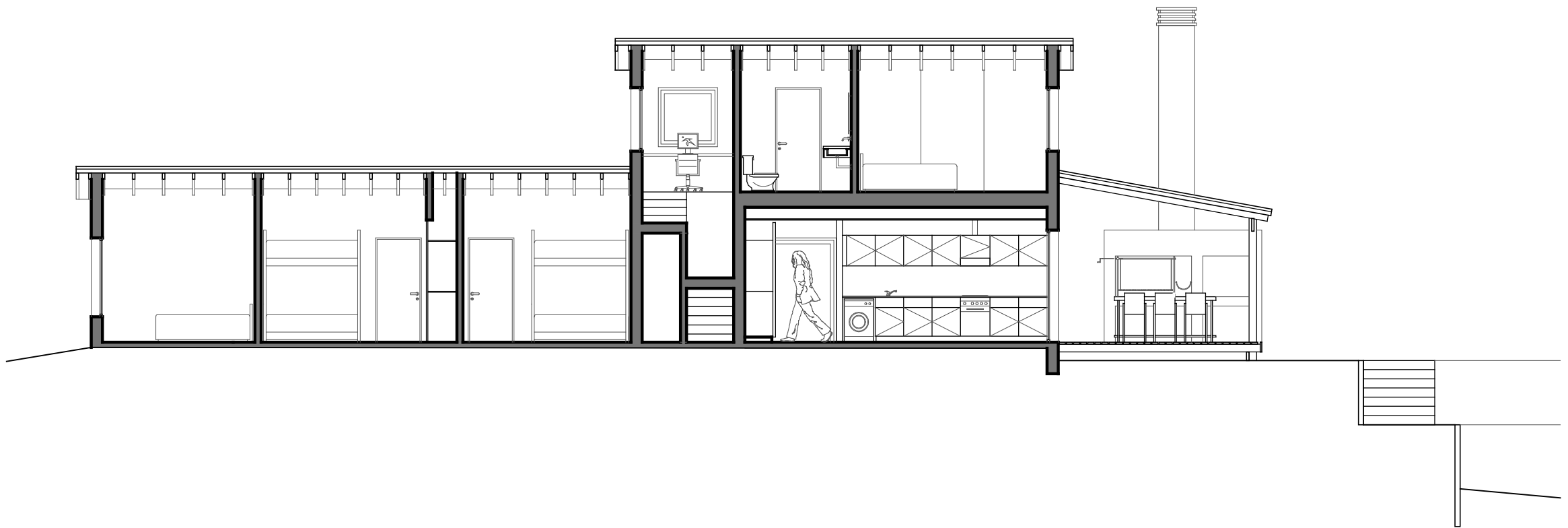
Corte AA





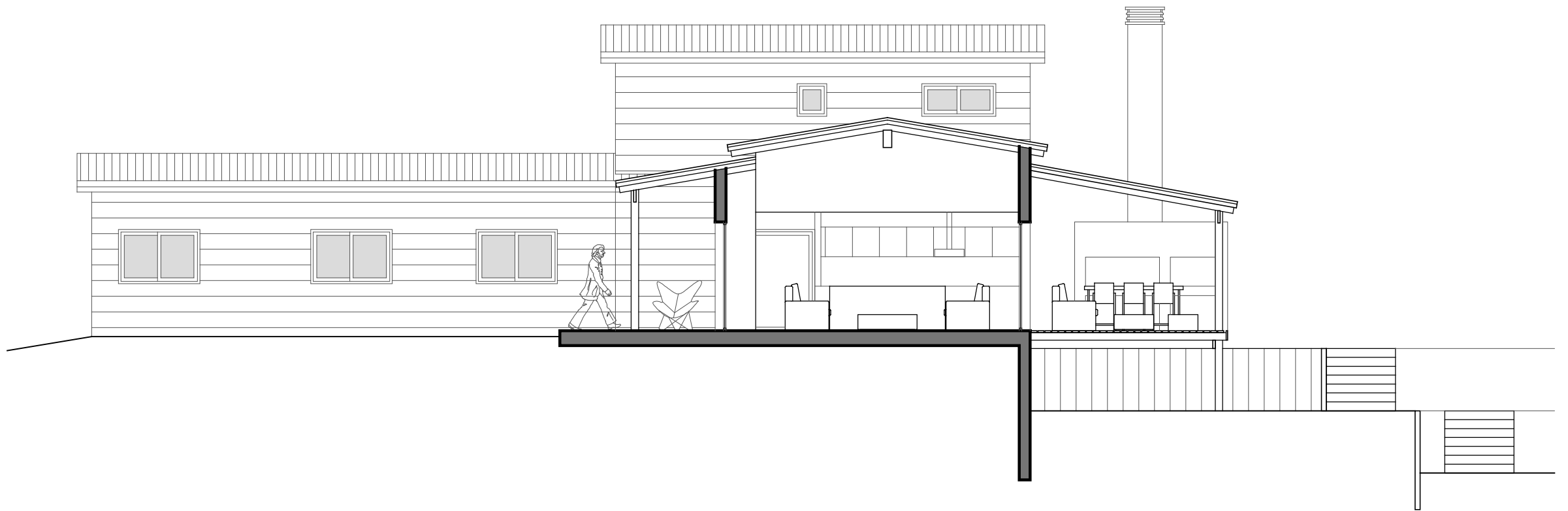
Corte BB



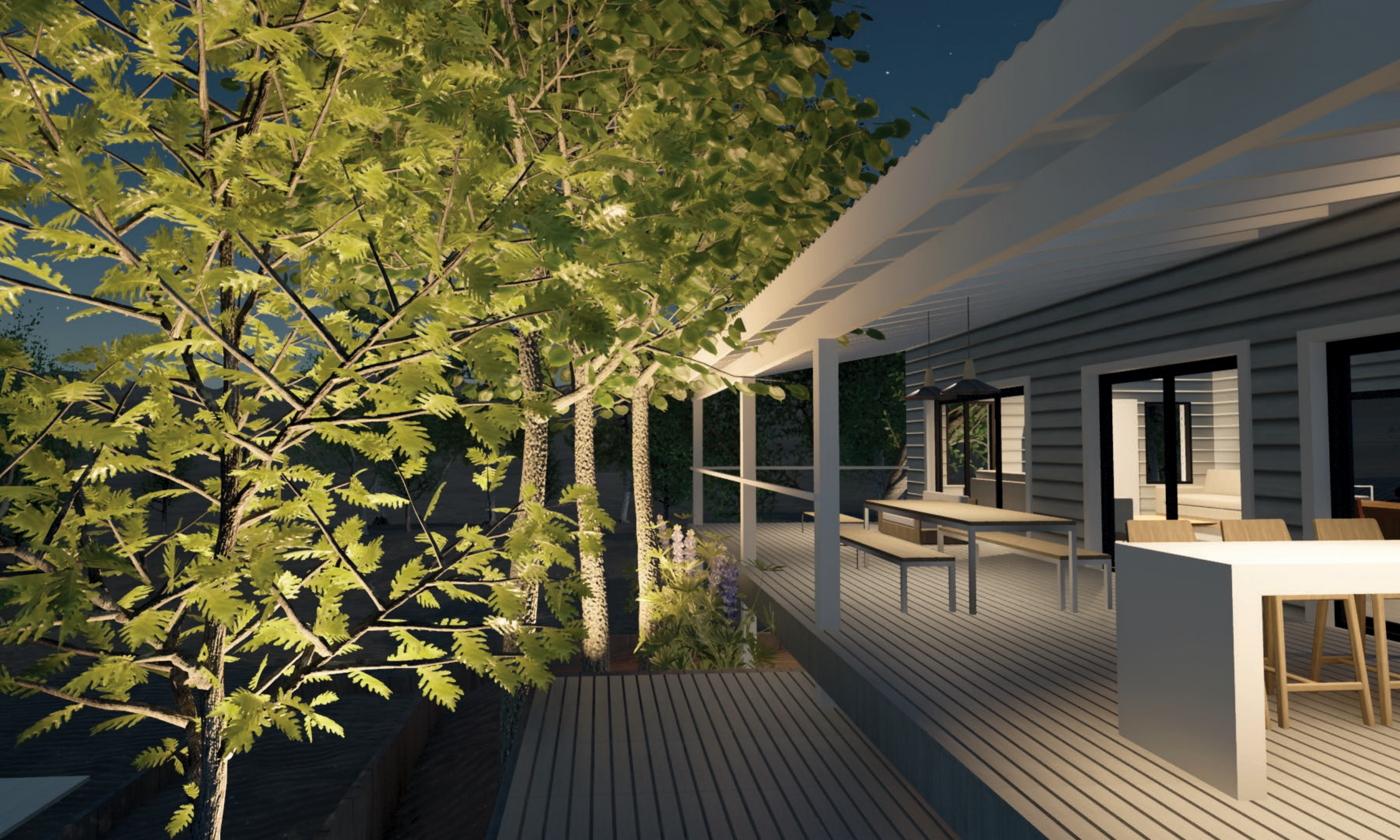


Corte CC





Corte DD







Germán Salas arquitectos













Germán Salas arquitectos

www.germansalasarq.com

Germán Salas arquitectos