

ESMOD FOR YOU

ESMOD SM26

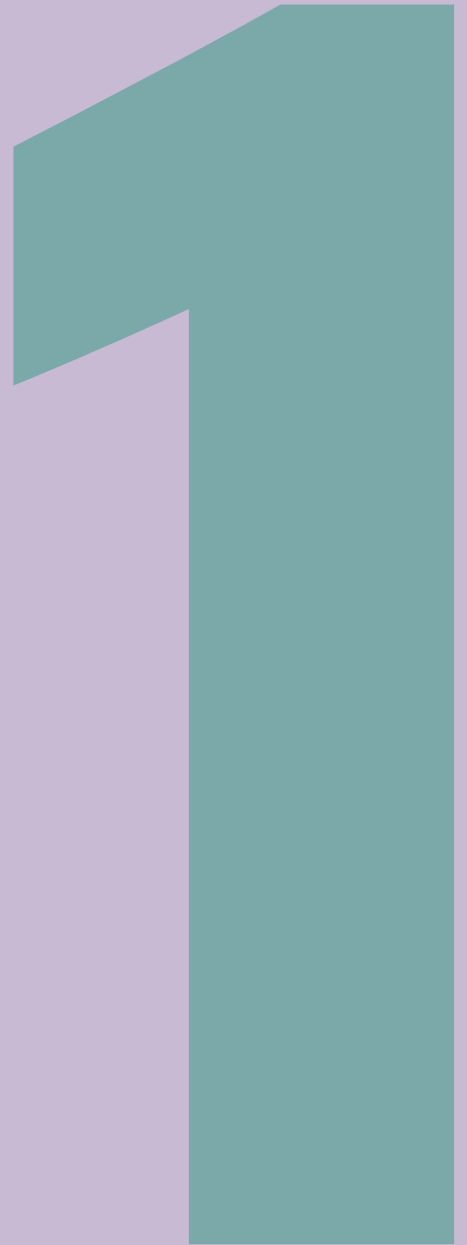
MARIE LINSENHOFF

Phone: +49 151 24056524

Email: marie.linsenhoff@fr.esmod.net

**SHE LIVES LIFE IN A
LITTLE FAIRYTALE...**

HER OWN



CONTENTS

RUFF SKETCHES

PAGE 5

FINAL SKETCH

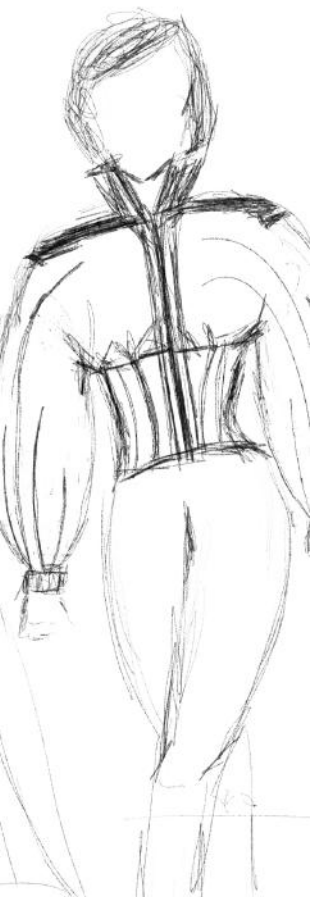
PAGE 6

TECHNICAL

PAGE 8

DRAWINGS





RUFF SKETCHES

Creating 5 new interpretations of a Bomber Jacket, by using my imagination.

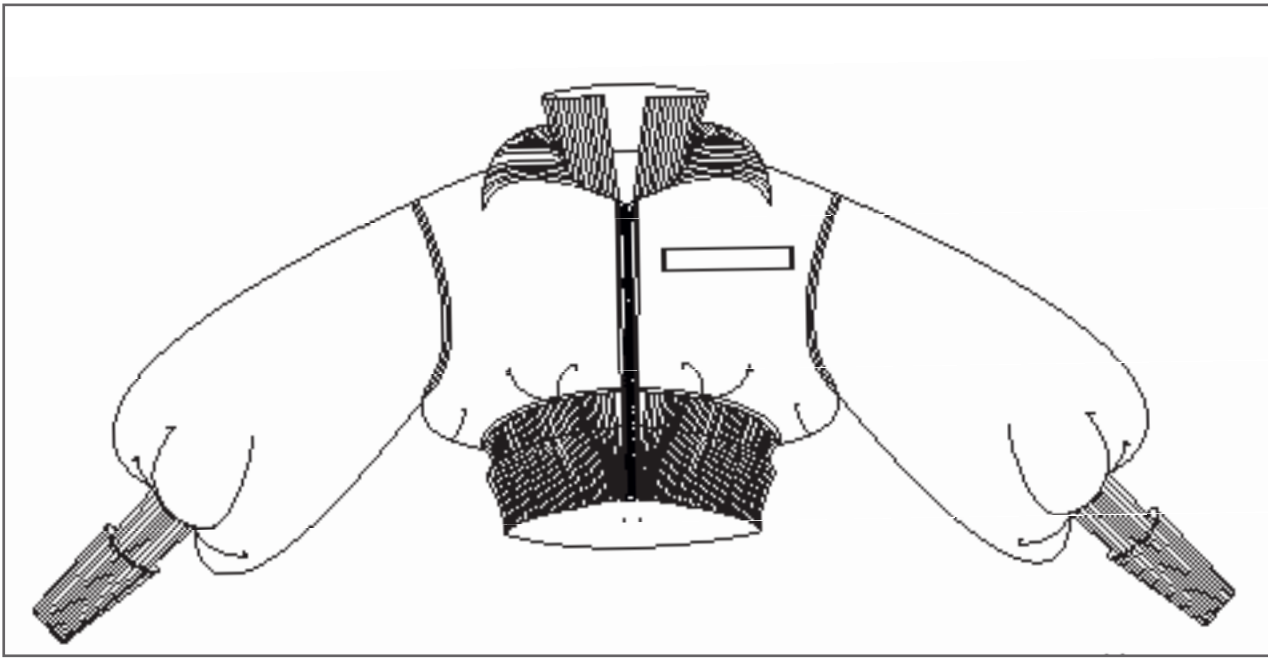


FAIRYTALE BOMBER JACKET

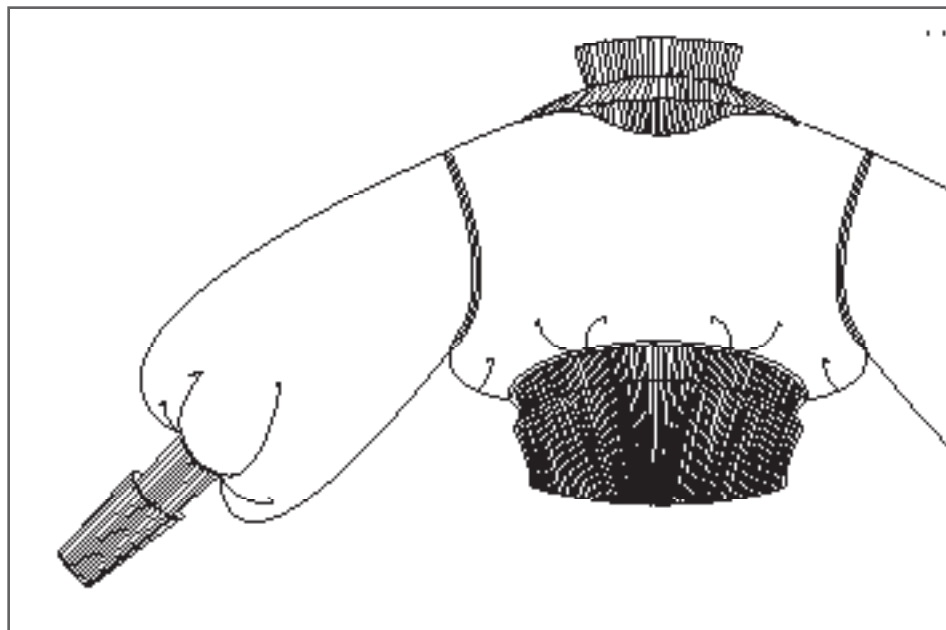
The final look in black and white and color.



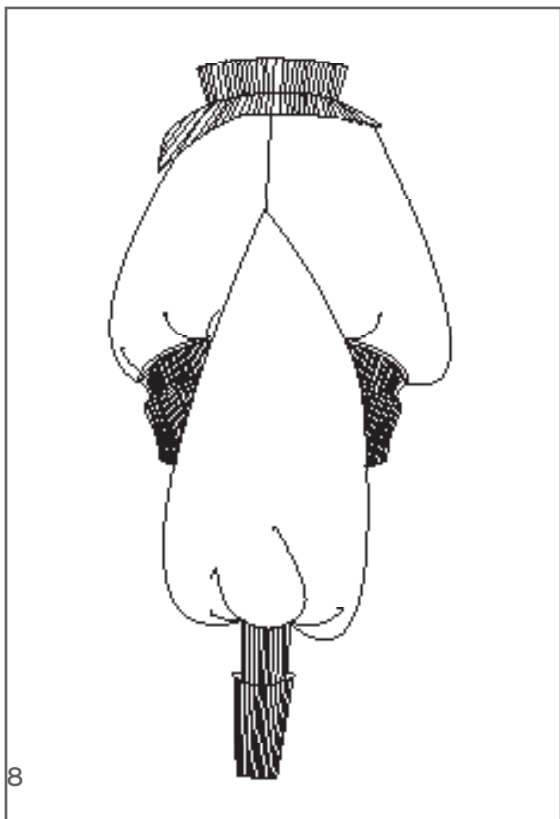
FRONT



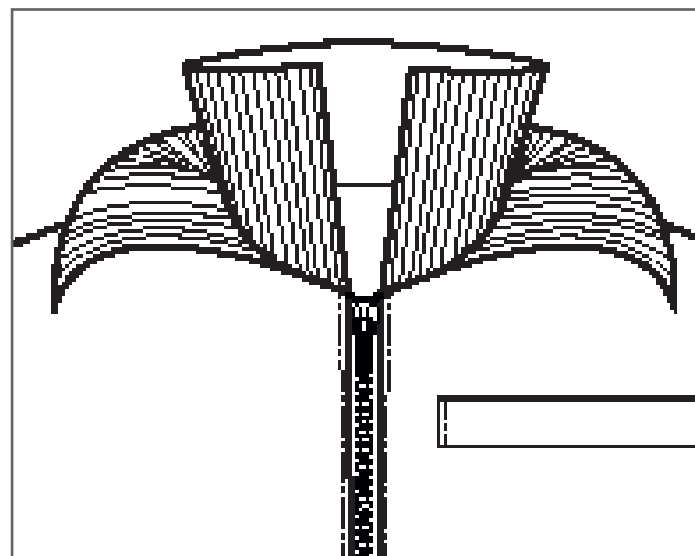
BACK



SIDE



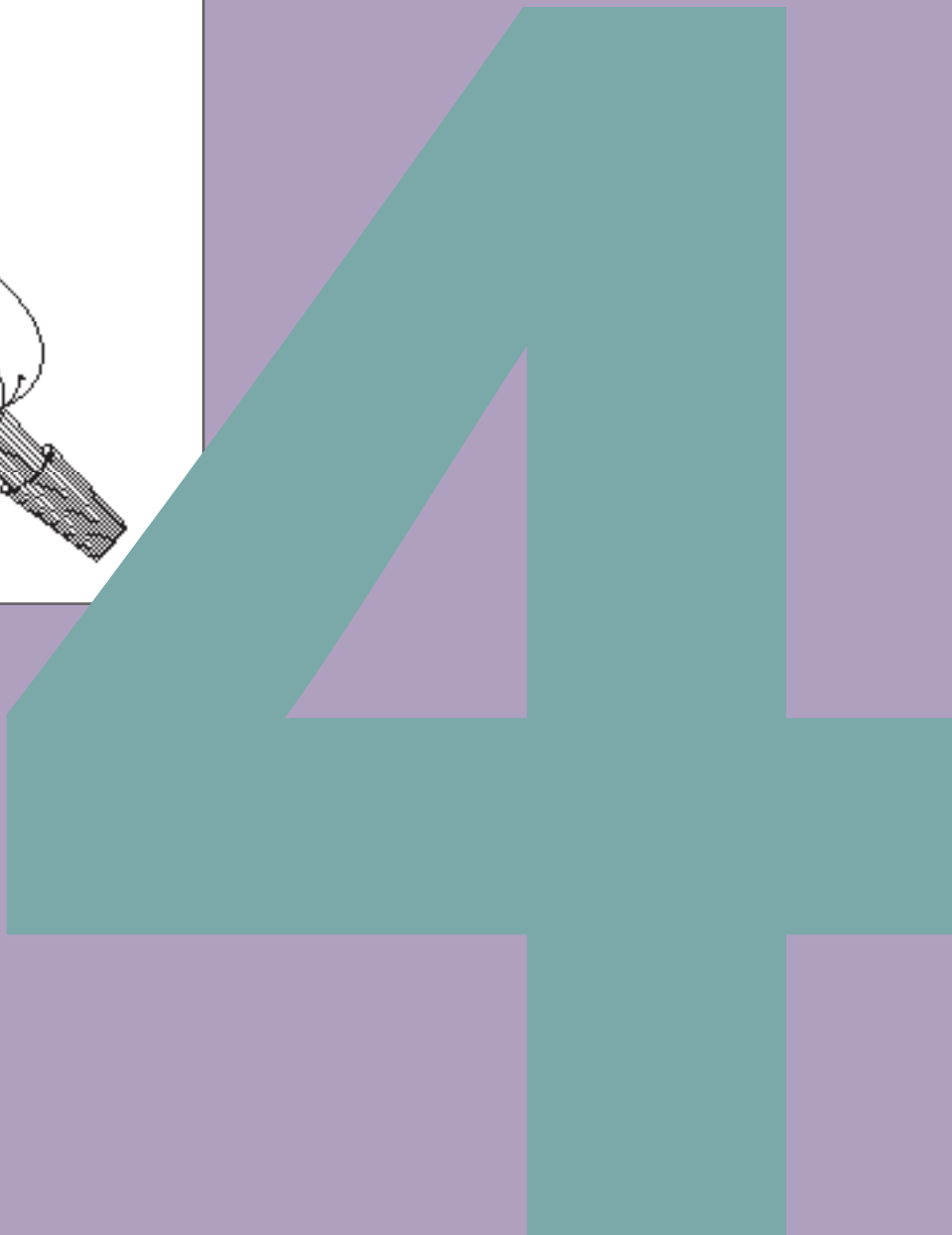
ZOOM



FARYTALE BOMBER JACKET

Cropped Bomber Jacket

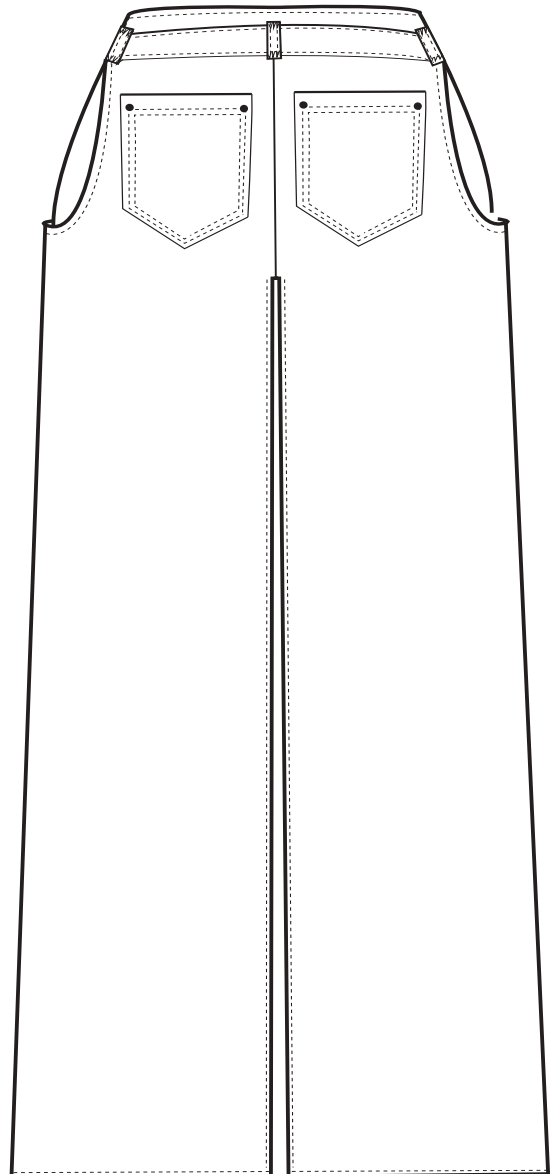
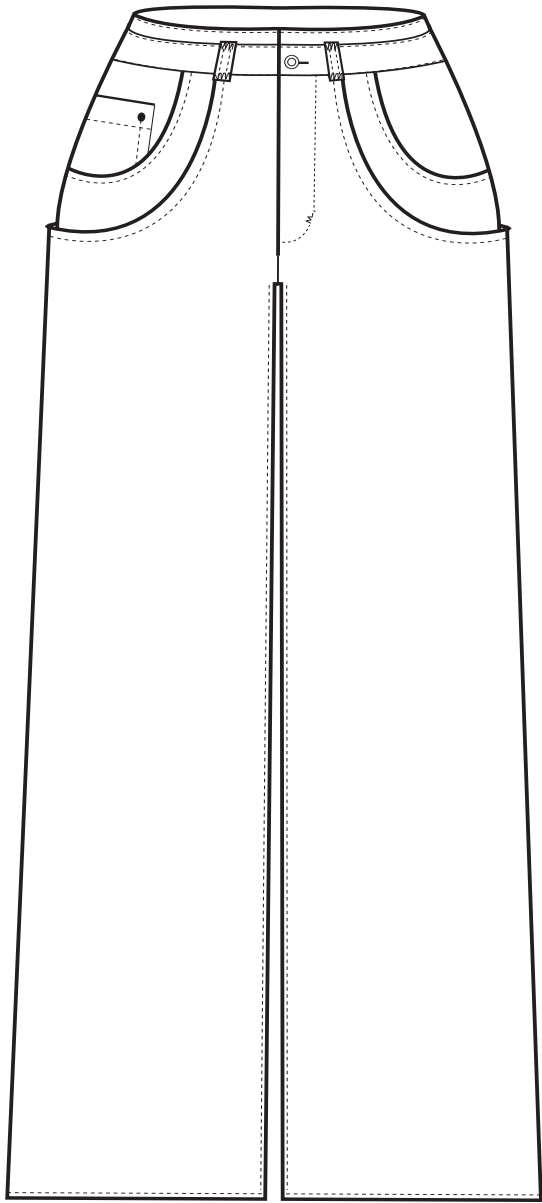
Large over sized volume, coming together at the waist and the cuffs. Double collar, cuffs and belt, edge to edge zipper on center front, inverted pocket above bustline on the right side. Puffed sleeves with a lot of gatherings, as well gatherings on the waistline.



2 SHADES OF DENIM PANTS

Large Boyfriend Jeans





COFFEE
URBAN

STREET
EATERY