



audio-technica

TURNTABLES



proaudio
Catalogue 2024

Are you mixing with the right company?

Index

HIFI TURNTABLES

- AT LP5X	<u>6</u>
- AT LP3XBT	<u>8</u>
- AT LP3XBT WH	<u>10</u>
- AT LPW30TK	<u>12</u>
- AT LPW30BK	<u>14</u>
- AT LPW40WN	<u>16</u>
- AT LPW50PB	<u>18</u>
- AT LPW50BTRW	<u>20</u>

DJ TURNTABLES

- AT LP140XPBKE	<u>22</u>
- AT LP140XPSVE	<u>24</u>
- AT LP120XUSBSV	<u>26</u>
- AT LP120XUSBBK	<u>28</u>
- AT LP120XBTUSBBK	<u>30</u>

ENTRY LEVEL TURNTABLES

- AT LP3BK	<u>32</u>
- AT LP3WH	<u>34</u>
- AT LP60XBTBK	<u>36</u>
- AT LP60XUSB GM	<u>38</u>
- AT-LP60X	<u>40</u>

ACCESSORIES

- AT 618a	<u>42</u>
- AT 6181DL	<u>42</u>
- AT 6180a	<u>42</u>
- AT 6013a	<u>43</u>
- AT 6012	<u>43</u>
- AT 6003R	<u>43</u>
- AT 617a	<u>44</u>
- AT 607a	<u>44</u>



**AUDIOPHILE MOVING COIL
CARTRIDGES**

- AT OC9XEB 45

**VM95 SERIES MOVING
MAGNET CARTRIDGES AND
SETS**

- AT VM95C 46

- AT VM95C/H 46

- AT VM95E 46

- AT VM95ML 47

- AT VM95EN 47

- AT VM95SH 47

**VM95 SERIES
REPLACEMENT STYLI**

- AT VMN95C 48

- AT VMN95E 48

- AT VMN95ML 48

**REPLACEMENT STYLI FOR
AT-XP SERIES DJ
CARTRIDGES**

- ATN XP3 45

- ATN 95EX 45

**P-MOUNT
CARTRIDGES
REPLACEMENT STYLI**

- ATN 81CP 49

- ATN 91R 50

- ATN 91 50

- ATN 3600L 50

**REPLACEMENT
STYLUS**

- ATN 81 CP 49

**HEADSHELLS FOR
HALF-INC
CARTRIDGES WITH
SLOT TYPE
OVERHAND
ADJUSTMENT**

- AT HS4 49



Company history

IT ALL STARTED BACK IN 1962...



Audio-Technica was established in 1962 in Shinjuku, Tokyo, Japan, by Hideo Matsushita as a phonograph cartridge manufacturer. Its first products were the AT-1 and the AT-3 MM stereo phono cartridges. Business rapidly developed and Audio-Technica expanded into other fields. The headquarters and factory moved in 1965 to the current address in Naruse, Machida, Tokyo. In 1969, the company began exporting phono cartridges worldwide and launched the first microcassette recorders.

In 1972, Audio-Technica established its US arm in Fairlawn, Ohio, and started shipping VM phono cartridges to European manufacturers. In 1974, the company developed its first headphones, the AT-700 series, launched the same year. The AT-800 series of microphones were introduced in 1978 and in the same year the UK establishment in Leeds began operation.



In the 1980s, with the growth in digital music formats threatening their core business of phonograph cartridges, Audio-Technica began a period of diversification. Employee suggestions were solicited, with sushi machines among the ideas selected for further development.

In 1984, Audio-Technica introduced the ASM50 Nigirikko, a nigiri-forming appliance for home kitchens, which incorporated a turn-table like mechanism to deposit the nigiri onto. The market success of this product led the company to develop a range of sushi machinery for commercial and industrial use. Audio-Technica remains one of the largest manufacturers of sushi machines globally today, with products marketed under the brand AUTECH.

In 1986, the company developed RCA cables with high-purity copper produced from the continuous metal casting process (PCOCC), invented and developed between 1982 and 1985 by Atsumi Ohno. In the same year, the company launched the AT33ML/OCC phono cartridge, the first made with PCOCC materials. In 1988, another Audio-Technica subsidiary is founded in Taiwan.

In 1990s, Audio-Technica introduced several large-diaphragm condenser microphones for studio use: the AT4033 cardioid microphone in 1991, the AT4050 multi-pattern in 1995, and the AT4060 vacuum tube cardioid microphone in 1998; the AT895, a DSP-controlled five-element microphone array providing adaptive directional audio acquisition, was introduced in 1999. In 1996, the Southeast Asian establishment began operation in Singapore.

In 2008, the company celebrated the 20th anniversary of supplying microphones for US Presidential Debates. For their 50th anniversary, Audio-Technica celebrated at Consumer Electronics Show 2012, debuting their AT-LP1240-USB DJ Turntable and ATH-CKS55i.

In 2017, Audio-Technica Pure Digital Drive Wireless Headphone ATH-DSR9BT received CES Innovation Honoree Awards by using Trigrance Dnote Technology.

Since the late 1990s, Audio-Technica supplied microphones and headphones for US television shows such as the Big Brother, Deal or No Deal, the Rock and Roll Hall of Fame inductions and several international events:

Period	Event	Editions
1996–present	Summer Olympic Games	Atlanta 1996, Sydney 2000, Athens 2004, Beijing 2008, London 2012, Tokyo 2020
2002–present	Winter Olympic Games	Salt Lake City 2002, Torino 2006, Vancouver 2010, Sochi 2014, Pyeongchang 2018 Beijing 2022
1998–2013	Grammy Awards	1998–2013
2019	MotoGP	2019



AT-LP5X

Direct-Drive Turntable

HI-FI Turntables

Building on Audio-Technica's analog heritage and over 50 years of Japanese audio design, the AT-LP5X features upgraded technology while keeping the contemporary style and acclaimed performance of its predecessor, the AT-LP5.



The AT-LP5x features a built-in switchable MM/MC phono/line preamp that enables it to connect directly to a computer, home stereo, powered speakers and other components that have no dedicated turntable input. The selection of MM/MC cartridges allow for an easy upgrade to a moving coil with additional equipment. The turntable is also equipped with a USB output for direct connection to a computer.





Plays 33-1/3 RPM,
45 RPM and 78
RPM Records



Built-in Switchable
Phono Pre-amplifier



J-shaped
Tonearm



AT-VM95E Dual
Magnet™ Phono
Cartridge



- Direct-drive, low noise motor
- Fully manual operation with three speeds: 33-1/3, 45 and 78 RPM
- AT-VM95E Dual Moving Magnet stereo cartridge (black) with replaceable stylus
- Lightweight AT-HS6 headshell
- J-shaped tonearm, modeled after original Audio-Technica designs from the 1960s and '70s, is engineered to minimize tracking errors
- Switchable MM/MC built-in pre-amplifier and line enables connection to components with or without a dedicated phono input
- Anti-resonance, die-cast aluminum platter
- Heavy rubber damping mat for improved low-frequency reproduction
- AC adapter handles AC/DC conversion outside of the chassis, reducing noise in the signal chain
- Elegant matte black finish
- Includes dual RCA (male) to dual RCA (male) stereo cable, 45 RPM adapter, USB cable
- Included dust cover and mounting hardware



AT-LP3XBT

HI-FI Turntables

Automatic Belt-Drive Turntable (Wireless & Analog)

The AT-LP3XBT is a fully automatic turntable designed to deliver outstanding analog sound with enhanced Bluetooth® wireless technology.



Bringing the clarity and warmth of analog audio to the digital generation, this Bluetooth® turntable offers all the benefits of vinyl with the convenience of enhanced connectivity. Enjoy the freedom to connect to the latest speakers or headphones with Bluetooth® wireless technology at just the touch of a button - your analog listening journey starts here.





Bluetooth®
Wireless or Wired
Listening



AT-VM95C Dual
Magnet Phono
Cartridge



Built-in Switchable
Phono Pre-amplifier



Plays 33 $\frac{1}{3}$ and 45
RPM Records



Integrated Bluetooth® technology gives you the flexibility to connect your turntable quickly and easily, no matter where you are or how you choose to enjoy your vinyl experience. Whether you pair your LP3XBT with speakers to provide the perfect soundtrack for a gathering with friends, or listen through a pair of Audio-Technica headphones for a deep listening session, you can expect impeccable high-fidelity audio.

- Fully automatic belt-drive turntable operation with two speeds: 33-1/3, 45 RPM
- High-fidelity audio with Bluetooth wireless technology
- Connects wirelessly to speakers and other devices equipped with Bluetooth wireless technology or to wired audio systems and powered speakers via included dual RCA output cable
- Compatible with the high-quality Qualcomm® aptX™ audio codec
- Balanced straight tonearm with hydraulically damped lift control and rest
- AT-VM95C cartridge is compatible with any VM95 Series replacement stylus, offering a wide choice of options for every budget and application
- Includes the AT-HS3 universal headshell
- Built-in switchable phono/line pre-amplifier with detachable dual RCA output cable with grounding wire
- Anti-resonance, die-cast aluminum platter with felt mat
- Damped base construction for reduced low-frequency feedback coloration
- Included Accessories: detachable RCA output cable (Dual RCA male to dual RCA male with ground), 45 RPM adapter, removable hinged dust cover, and detachable power cable.



AT-LP3XBT WH

HI-FI Turntables

Automatic Belt-Drive Turntable (Wireless & Analog)

The AT-LP3XBT is a fully automatic turntable designed to deliver outstanding analog sound with enhanced Bluetooth® wireless technology.



Bringing the clarity and warmth of analog audio to the digital generation, this Bluetooth® turntable offers all the benefits of vinyl with the convenience of enhanced connectivity. Enjoy the freedom to connect to the latest speakers or headphones with Bluetooth® wireless technology at just the touch of a button - your analog listening journey starts here.





Bluetooth®
Wireless or Wired
Listening



AT-VM95C Dual
Magnet Phono
Cartridge



Built-in Switchable
Phono Pre-amplifier



Plays 33 $\frac{1}{3}$ and 45
RPM Records



Integrated Bluetooth® technology gives you the flexibility to connect your turntable quickly and easily, no matter where you are or how you choose to enjoy your vinyl experience. Whether you pair your LP3XBT with speakers to provide the perfect soundtrack for a gathering with friends, or listen through a pair of Audio-Technica headphones for a deep listening session, you can expect impeccable high-fidelity audio.

- Fully automatic belt-drive turntable operation with two speeds: 33-1/3, 45 RPM
- High-fidelity audio with Bluetooth wireless technology
- Connects wirelessly to speakers and other devices equipped with Bluetooth wireless technology or to wired audio systems and powered speakers via included dual RCA output cable
- Compatible with the high-quality Qualcomm® aptX™ audio codec
- Balanced straight tonearm with hydraulically damped lift control and rest
- AT-VM95C cartridge is compatible with any VM95 Series replacement stylus, offering a wide choice of options for every budget and application
- Includes the AT-HS3 universal headshell
- Built-in switchable phono/line pre-amplifier with detachable dual RCA output cable with grounding wire
- Anti-resonance, die-cast aluminum platter with felt mat
- Damped base construction for reduced low-frequency feedback coloration
- Included Accessories: detachable RCA output cable (Dual RCA male to dual RCA male with ground), 45 RPM adapter, removable hinged dust cover, and detachable power cable.



AT-LPW30TK

Fully Manual Belt-Drive Turntable

HI-FI Turntables

The AT-LPW30TK is a fully manual, belt-drive turntable designed to give you optimal high-fidelity audio reproduction from vinyl. The two-speed (33-1/3 and 45 RPM) turntable features an aesthetically pleasing anti-resonance MDF (medium density fiberboard) plinth with simulated teak veneer to limit low-frequency acoustical feedback.



The AT-LPW30TK is equipped with a built-in selectable phono preamp and a detachable dual RCA output cable to enable direct connection to components with or without a dedicated phono input.



Plays 33-1/3 and
45 RPM Records



Built-in Switchable
Phono Pre-amplifier



Straight
Aluminum
Tonearm



AT-VM95C Dual
Magnet™
Phono Cartridge



- Fully manual, belt-drive operation with two speeds: 33-1/3 and 45 RPM
- Fully manual operation
- Adjustable dynamic anti-skate control
- Professional anti-resonance, die-cast aluminum platter with rubber mat
- AT-HS4 universal 1/2"-mount headshell and AT-VM95C Dual Moving Magnet phono cartridge with 0.6 mil conical stylus
- AT-VM95C cartridge is compatible with any VM95 Series replacement stylus, offering a wide choice of options for every budget and application
- Straight tonearm with hydraulically damped lift control and lockable rest
- Anti-resonance MDF (medium density fiberboard) plinth with teak simulated wood veneer
- Built-in switchable phono pre-amplifier for phono or line-level output
- AC adapter handles AC/DC conversion outside of the chassis, reducing noise in the signal chain
- Includes dual RCA (male) to dual RCA (male) stereo cable, 45 RPM adapter, rubber mat, and removable hinged dust cover



AT-LPW30BK

Fully Manual Belt-Drive Turntable

HI-FI Turntables

The AT-LPW30BK is a fully manual, belt-drive turntable designed to give you optimal high-fidelity audio reproduction from vinyl. The two-speed (33-1/3 and 45 RPM) turntable features an aesthetically pleasing anti-resonance MDF (medium density fiberboard) plinth with simulated black wood veneer to limit low-frequency acoustical feedback.



The AT-LPW30BK is equipped with a built-in selectable phono preamp and a detachable dual RCA output cable to enable direct connection to components with or without a dedicated phono input.



Plays 33-1/3 and
45 RPM Records



Built-in Switchable
Phono Pre-amplifier



Straight
Aluminum
Tonearm



AT-VM95C Dual
Magnet™
Phono Cartridge



- Fully manual, belt-drive operation with two speeds: 33-1/3 and 45 RPM
- Fully manual operation
- Adjustable dynamic anti-skate control
- Professional anti-resonance, die-cast aluminum platter with rubber mat
- AT-HS4 universal 1/2"-mount headshell and AT-VM95C Dual Moving Magnet phono cartridge with 0.6 mil conical stylus
- AT-VM95C cartridge is compatible with any VM95 Series replacement stylus, offering a wide choice of options for every budget and application
- Straight tonearm with hydraulically damped lift control and lockable rest
- Anti-resonance MDF (medium density fiberboard) plinth with teak simulated wood veneer
- Built-in switchable phono pre-amplifier for phono or line-level output
- AC adapter handles AC/DC conversion outside of the chassis, reducing noise in the signal chain
- Includes dual RCA (male) to dual RCA (male) stereo cable, 45 RPM adapter, rubber mat, and removable hinged dust cover



AT-LPW40WN

Fully Manual Belt-Drive Turntable

HI-FI Turntables

The AT-LPW40WN is a fully manual, belt-drive turntable designed to give you optimal high-fidelity audio reproduction from vinyl. It features an aesthetically pleasing anti-resonance MDF (medium density fiberboard) plinth with simulated walnut wood veneer to limit low-frequency acoustical feedback and a sensor-monitored motor to ensure accurate platter rotation speeds at 33-1/3 and 45 RPM.



The AT-LPW40WN is equipped with a built-in selectable phono preamp and a detachable dual RCA output cable to enable direct connection to components with or without a dedicated phono input.





Plays 33-1/3 and
45 RPM Records



Built-in Switchable
Phono Pre-amplifier



Straight
Aluminum
Tonearm



AT-VM95E Dual
Magnet™
Phono Cartridge



- Fully manual, belt-drive operation with two speeds: 33-1/3 and 45 RPM
- Motor features a speed-sensor system to maintain accurate platter rotation speed
- Fully manual operation
- Adjustable dynamic anti-skate control
- Professional anti-resonance, die-cast aluminum platter with rubber mat
- AT-HS4 universal 1/2"-mount headshell and AT-VM95E Dual Moving Magnet phono cartridge with 0.3 x 0.7 mil elliptical stylus
- AT-VM95E cartridge is compatible with any VM95 Series replacement stylus, offering a wide choice of options for every budget and application
- Straight carbon-fiber tonearm with hydraulically damped lift control and lockable rest
- Anti-resonance MDF (medium density fiberboard) plinth with walnut simulated wood veneer
- Built-in switchable phono pre-amplifier for phono or line-level output
- AC adapter handles AC/DC conversion outside of the chassis, reducing noise in the signal chain



AT-LPW50PB

Fully Manual Belt-Drive Turntable

HI-FI Turntables

The AT-LPW50PB is a fully manual, belt-drive turntable designed to give you optimal high-fidelity audio reproduction from vinyl. It features an anti-resonance 30 mm thick MDF (medium density fiberboard) plinth, with a high-gloss, piano-black finish, to dampen low-frequency acoustical feedback, and a sensor-monitored motor to ensure accurate platter rotation speeds of 33-1/3 and 45 RPM.



The AT-LPW50PB is equipped with a built-in selectable phono preamp and a detachable dual RCA output cable to enable direct connection to components with or without a dedicated phono input.



Plays 33-1/3 and
45 RPM Records



Built-in Switchable
Phono Pre-amplifier



Carbon-Fiber
Straight
Tonearm



AT-VM95E Dual
Magnet™
Phono Cartridge



- Fully manual, belt-drive operation with two speeds: 33-1/3 and 45 RPM
- Motor features a speed-sensor system to maintain accurate platter rotation speed
- Adjustable dynamic anti-skate control
- Professional anti-resonance, die-cast aluminum platter with rubber mat
- AT-HS4 universal 1/2"-mount headshell and AT-VM95E Dual Moving Magnet phono cartridge (black) with 0.3 x 0.7 mil elliptical stylus
- AT-VM95E cartridge is compatible with any VM95 Series replacement stylus, offering a wide choice of options for every budget and application
- Straight, matte-finish, carbon-fiber tonearm with hydraulically damped lift control and lockable rest
- Anti-resonance 30 mm thick MDF (medium density fiberboard) plinth with high-gloss, piano-black finish
- High-isolation, height-adjustable feet
- Built-in switchable phono preamplifier for phono or line-level output
- AC adapter handles AC/DC conversion outside of the chassis, reducing noise in the signal chain
- Includes dual RCA (male) to dual RCA (male) stereo cable, 45 RPM adapter, rubber mat, and removable hinged dust cover



AT-LPW50BTRW **HI-FI Turntables**

Manual Belt-Drive Turntable (Wireless & Analog)

Audio-Technica's AT-LPW50BT-RW wireless turntable provides optimal high-fidelity audio reproduction with the option of wired or Bluetooth® listening. The manual record player's stunning rosewood-finished veneer adds to the turntable's refined style, and also dampens low-frequency acoustic feedback to ensure you experience crystal clear, uninterrupted sound.



Incorporating a top-quality tonearm and the critically-acclaimed AT-VM95E, Audio-Technica's AT-LPW50XBT-RW record player with Bluetooth® comes complete with everything a vinyl enthusiast needs to enjoy an immersive, rich analog audio experience.





Bluetooth® or
Analog Listening



AT-VM95 Dual
Moving Magnet
Phono Cartridge



Built-in Switchable
Phono Pre-Amplifier



Straight Carbon-
fiber Tonearm



The LPW50BT-RW takes Audio-Technica's range of wooden turntables to the next level, incorporating a variety of enhanced features and wireless connectivity. This Bluetooth® vinyl player is the culmination of Audio-Technica's 60 years of dedication to analog listening, creating a record player that produces unrivalled sound quality while featuring innovative audio technology.

- Fully manual, belt-drive operation with two speeds: 33-1/3 and 45 RPM
- Motor features a speed-sensor system to maintain accurate platter rotation speed
- Adjustable dynamic anti-skate control
- Professional anti-resonance, die-cast aluminum platter with rubber mat
- AT-HS4(silver) universal 1/2"-mount headshell and AT-VM95E (black) Dual Moving Magnet phono cartridge with 0.3 x 0.7 mil elliptical stylus
- The AT-VM95E cartridge is compatible with any VM95 Series replacement stylus, offering a wide choice of options for every budget and application
- Straight carbon-fiber tonearm with hydraulically damped lift control and lockable rest
- Anti-resonance 30 mm thick MDF (medium density fiberboard) plinth with rosewood-finished wood veneer
- Built-in switchable phono pre-amplifier for phono or line-level output
- AC adapter handles AC/DC conversion outside of the chassis, reducing noise in the signal chain
- Includes dual RCA (male) to dual RCA (male) stereo cable, 45 RPM adapter, rubber mat, and removable hinged dust cover



AT-LP140XPBKE

DJ Turntables

Direct-Drive Professional DJ Turntable

The AT-LP140XP fully manual professional DJ turntable features a high-torque direct-drive motor and anti-resonant, mass-damped, die-cast aluminum platter to ensure stable, on-axis rotation at 33-1/3, 45, and 78 RPM. It is equipped with an S-shaped tonearm with height adjustment, adjustable tracking force (counterweight) and adjustable dynamic anti-skate control.



Designed to connect to components with a dedicated phono input, the turntable comes with a detachable dual RCA output cable and supplies a strong 5.5 mV output.





Plays 33-1/3 RPM,
45 RPM and 78 RPM
Records



Direct-Drive
with High-Torque
Motor



S-Shaped
Tonearm



AT-XP3 Dual
Magnet™
Phono Cartridge



- Experience high-fidelity audio and professional DJ performance
- Direct-drive, high-torque servo motor with speed stabilization
- Fully manual operation
- Adjustable dynamic anti-skate control
- Selectable 33/45/78 RPM speeds
- Professional anti-resonance, mass-damped, die-cast aluminum platter with felt mat
- AT-HS6 universal 1/2"-mount headshell and AT-XP3 DJ cartridge with 0.6 mil conical bonded stylus
- Balanced S-shaped tonearm with hydraulically damped lift control, height adjustment, and lockable rest
- Dedicated phono-level output (5.5 mV)
- Stroboscopic platter with speed indicator
- Forward/reverse operation and variable pitch control with quartz speed lock
- Popup stylus target light for easier cueing in low light
- Damped base construction for reduced low-frequency feedback coloration
- Includes: detachable RCA output cable (dual RCA male to dual RCA male), power cable, 45 RPM adapter, counterweight, felt mat, and removable hinged dust cover



AT-LP140XPSVE

Direct-Drive Professional DJ Turntable

DJ Turntables

The AT-LP140XP fully manual professional DJ turntable features a high-torque direct-drive motor and anti-resonant, mass-damped, die-cast aluminum platter to ensure stable, on-axis rotation at 33-1/3, 45, and 78 RPM. It is equipped with an S-shaped tonearm with height adjustment, adjustable tracking force (counterweight) and adjustable dynamic anti-skate control.



Designed to connect to components with a dedicated phono input, the turntable comes with a detachable dual RCA output cable and supplies a strong 5.5 mV output.



Plays 33-1/3 RPM,
45 RPM and 78 RPM
Records



Direct-Drive
with High-Torque
Motor



S-Shaped
Tonearm



AT-XP3 Dual
Magnet™
Phono Cartridge



- Experience high-fidelity audio and professional DJ performance
- Direct-drive, high-torque servo motor with speed stabilization
- Fully manual operation
- Adjustable dynamic anti-skate control
- Selectable 33/45/78 RPM speeds
- Professional anti-resonance, mass-damped, die-cast aluminum platter with felt mat
- AT-HS6 universal 1/2"-mount headshell and AT-XP3 DJ cartridge with 0.6 mil conical bonded stylus
- Balanced S-shaped tonearm with hydraulically damped lift control, height adjustment, and lockable rest
- Dedicated phono-level output (5.5 mV)
- Stroboscopic platter with speed indicator
- Forward/reverse operation and variable pitch control with quartz speed lock
- Popup stylus target light for easier cueing in low light
- Damped base construction for reduced low-frequency feedback coloration
- Includes: detachable RCA output cable (dual RCA male to dual RCA male), power cable, 45 RPM adapter, counterweight, felt mat, and removable hinged dust cover



AT-LP120XUSBSV

DJ Turntables

Direct-Drive Turntable (Analog & USB)

This update of the AT-LP120-USB turntable features a new DC servo direct-drive motor, along with adjustable dynamic anti-skate control and selectable phono preamplifier. The fully manual turntable plays 33-1/3, 45, and 78 RPM records and is equipped with a USB output that allows direct connection to your computer. Just download the free Mac- and PC-compatible Audacity recording software (or software of your choice) and start converting your records to digital audio files. But in addition to the USB output, the turntable also comes with a detachable dual RCA output cable and is equipped with a built-in selectable phono preamp so you can connect directly to your home stereo, whether it has a dedicated phono input or not.



Additional features include a die-cast aluminum platter with felt mat; a start/stop button; selectable high-accuracy quartz-controlled pitch lock and pitch change slider control with +/-8% or +/-16% adjustment ranges; a stroboscopic platter with speed indicator; a removable plug-type stylus target light; external power supply; and a removable hinged dust cover.





Plays 33-1/3 RPM,
45 RPM and 78 RPM
Records



USB and Analog
Output



Built-in
Switchable Phono
Pre-Amplifier



AT-VM95E Dual
Magnet™
Phono Cartridge



- Experience the high-fidelity audio of vinyl
- Direct-drive, DC servo motor
- Fully manual operation
- Adjustable dynamic anti-skate control
- Selectable 33/45/78 RPM speeds
- Professional-grade anti-resonance, die-cast aluminum platter with felt mat
- AT-HS6 universal 1/2"-mount headshell and AT-VM95E Dual Magnet™ phono cartridge with 0.3 x 0.7 mil elliptical stylus
- AT-VM95E cartridge is compatible with any VM95 Series replacement stylus, offering a wide choice of options for every budget and application
- Balanced S-shaped tonearm with hydraulically damped lift control and lockable rest
- Built-in switchable phono pre-amplifier for phono- or line-level output
- Stroboscopic platter with speed indicator
- Variable pitch control with quartz speed lock
- Removable plug-type target light for easier cueing in low light
- Damped base construction for reduced low-frequency feedback coloration
- AC adapter handles AC/DC conversion outside of the chassis, reducing noise in the signal chain
- Convert your vinyl records to digital audio files by downloading and using the free Mac- and PC-compatible Audacity recording software (or software of your choice)
- Includes: USB cable, detachable RCA output cable (dual RCA male to dual RCA male), AC adapter, 45 RPM adapter, counterweight, felt mat, and removable hinged dust cover



AT-LP120XUSBBK

DJ Turntables

Direct-Drive Turntable (Analog & USB)

This update of the AT-LP120-USB turntable features a new DC servo direct-drive motor, along with adjustable dynamic anti-skate control and selectable phono preamplifier. The fully manual turntable plays 33-1/3, 45, and 78 RPM records and is equipped with a USB output that allows direct connection to your computer. Just download the free Mac- and PC-compatible Audacity recording software (or software of your choice) and start converting your records to digital audio files. But in addition to the USB output, the turntable also comes with a detachable dual RCA output cable and is equipped with a built-in selectable phono preamp so you can connect directly to your home stereo, whether it has a dedicated phono input or not.



Additional features include a die-cast aluminum platter with felt mat; a start/stop button; selectable high-accuracy quartz-controlled pitch lock and pitch change slider control with +/-8% or +/-16% adjustment ranges; a stroboscopic platter with speed indicator; a removable plug-type stylus target light; external power supply; and a removable hinged dust cover.





Plays 33-1/3 RPM,
45 RPM and 78 RPM
Records



USB and
Analog Output



Built-in
Switchable Phono
Pre-Amplifier



AT-VM95E Dual
Magnet™
Phono Cartridge



- Experience the high-fidelity audio of vinyl
- Direct-drive, DC servo motor
- Fully manual operation
- Adjustable dynamic anti-skate control
- Selectable 33/45/78 RPM speeds
- Professional-grade anti-resonance, die-cast aluminum platter with felt mat
- AT-HS6 universal 1/2"-mount headshell and AT-VM95E Dual Magnet™ phono cartridge with 0.3 x 0.7 mil elliptical stylus
- AT-VM95E cartridge is compatible with any VM95 Series replacement stylus, offering a wide choice of options for every budget and application
- Balanced S-shaped tonearm with hydraulically damped lift control and lockable rest
- Built-in switchable phono pre-amplifier for phono- or line-level output
- Stroboscopic platter with speed indicator
- Variable pitch control with quartz speed lock
- Removable plug-type target light for easier cueing in low light
- Damped base construction for reduced low-frequency feedback coloration
- AC adapter handles AC/DC conversion outside of the chassis, reducing noise in the signal chain
- Convert your vinyl records to digital audio files by downloading and using the free Mac- and PC-compatible Audacity recording software (or software of your choice)
- Includes: USB cable, detachable RCA output cable (dual RCA male to dual RCA male), AC adapter, 45 RPM adapter, counterweight, felt mat, and removable hinged dust cover



AT-LP120XBTUSBBK **DJ Turntables**

Direct-Drive Turntable (Analog & USB) with BlueTooth

This fully manual turntable is modeled after the AT-LP120XUSB, but adds the convenience of Bluetooth® wireless connectivity to the existing analog and USB outputs.



Featuring a specially designed DC servo direct-drive motor and adjustable dynamic anti-skate control, the AT-LP120XBT-USB plays 33-1/3, 45, and 78 RPM records and outputs the high-fidelity audio to the device of your choice. Use the included RCA output cable along with the built-in selectable phono preamp to connect to your home stereo or powered speakers. Use the USB cable to connect to your computer and then download the free Mac- and PC-compatible Audacity recording software, or software of your choice, to start converting your records to digital audio files. Or use the Bluetooth wireless technology to pair the turntable with wireless speakers, headphones or other devices, including those that support the high-quality Qualcomm® aptX™ audio codec.





Bluetooth 5.0
Technology



USB and
Analog
Output



Plays 33-1/3 RPM,
45 RPM and 78
RPM Records



AT-VM95E Dual
Magnet™
Phono Cartridge



- High-fidelity audio with Bluetooth® wireless technology
- Direct-drive, DC servo motor
- Fully manual operation
- Adjustable dynamic anti-skate control
- Selectable 33/45/78 RPM speeds
- Anti-resonance, die-cast aluminum platter with felt mat
- AT-HS6 universal 1/2"-mount headshell and AT-VM95E Dual Moving Magnet™ phono cartridge with 0.3 x 0.7 mil elliptical stylus
- AT-VM95E cartridge is compatible with any VM95 Series replacement stylus, offering a wide choice of options for every budget and application
- Balanced S-shaped tonearm with hydraulically damped lift control and lockable rest
- Connects wirelessly to speakers and other devices equipped with Bluetooth wireless technology, to wired audio systems and powered speakers via included dual RCA output cable, or to computers via included USB cable
- Compatible with the high-quality Qualcomm® aptX™ audio codec
- Built-in switchable phono preamplifier for phono- or line-level output
- Stroboscopic platter with speed indicator
- Variable pitch control with quartz speed lock
- Removable plug-type target light for easier cueing in low light
- Damped base construction for reduced low-frequency feedback coloration



AT-LP3BK

Entry-Level Turntables

Fully Automatic Belt-Drive Stereo Turntable

The AT-LP3 fully automatic belt-drive turntable lets you take your analog listening experience to the next level with advanced features not typically found on automatic turntables. The balanced straight tone arm comes with a 1/2" mount universal headshell and AT91R Dual Moving Magnet phono cartridge, giving you excellent high-fidelity performance, plus the option to use other moving magnet or moving coil cartridges of your choosing.



The AT-LP3 is constructed of anti-vibration damping materials that limits low-frequency feedback. Resonance is further reduced by the turntable's die-cast aluminum platter and accompanying 4 mm rubber damping mat. Equipped to play both 33-1/3 and 45 RPM records, the AT-LP3 features a built-in switchable phono preamp and an attached dual RCA output cable that enable it be connected to a home stereo, powered speakers and other components whether they have a dedicated turntable input or not.



The AT-LP3 is constructed of anti-vibration damping materials that limits low-frequency feedback. Resonance is further reduced by the turntable's die-cast aluminum platter and accompanying 4 mm rubber damping mat. Equipped to play both 33-1/3 and 45 RPM records, the AT-LP3 features a built-in switchable phono preamp and an attached dual RCA output cable that enable it be connected to a home stereo, powered speakers and other components whether they have a dedicated turntable input or not.



- Fully automatic belt-drive turntable operation with two speeds: 33-1/3, 45 RPM
- Balanced straight tone arm with hydraulically damped lift control and rest
- Built-in switchable phono/line pre-amplifier with attached dual RCA output cable
- Switchable pre-amp modes for moving magnet and moving coil cartridges
- 1/2" mount universal headshell with AT91R Dual Moving Magnet phono cartridge and long-life diamond stylus
- Anti-resonance, die-cast aluminum platter with 4 mm thick rubber mat
- Damped base construction for reduced low-frequency feedback coloration
- Includes 45 RPM adapter and removable hinged dust cover



AT-LP3WH

Entry-Level Turntables

Fully Automatic Belt-Drive Stereo Turntable

The AT-LP3 fully automatic belt-drive turntable lets you take your analog listening experience to the next level with advanced features not typically found on automatic turntables. The balanced straight tone arm comes with a 1/2" mount universal headshell and AT91R Dual Moving Magnet phono cartridge, giving you excellent high-fidelity performance, plus the option to use other moving magnet or moving coil cartridges of your choosing.



The AT-LP3 is constructed of anti-vibration damping materials that limits low-frequency feedback. Resonance is further reduced by the turntable's die-cast aluminum platter and accompanying 4 mm rubber damping mat. Equipped to play both 33-1/3 and 45 RPM records, the AT-LP3 features a built-in switchable phono preamp and an attached dual RCA output cable that enable it be connected to a home stereo, powered speakers and other components whether they have a dedicated turntable input or not.



The AT-LP3 is constructed of anti-vibration damping materials that limits low-frequency feedback. Resonance is further reduced by the turntable's die-cast aluminum platter and accompanying 4 mm rubber damping mat. Equipped to play both 33-1/3 and 45 RPM records, the AT-LP3 features a built-in switchable phono preamp and an attached dual RCA output cable that enable it be connected to a home stereo, powered speakers and other components whether they have a dedicated turntable input or not.



- Fully automatic belt-drive turntable operation with two speeds: 33-1/3, 45 RPM
- Balanced straight tone arm with hydraulically damped lift control and rest
- Built-in switchable phono/line pre-amplifier with attached dual RCA output cable
- Switchable pre-amp modes for moving magnet and moving coil cartridges
- 1/2" mount universal headshell with AT91R Dual Moving Magnet phono cartridge and long-life diamond stylus
- Anti-resonance, die-cast aluminum platter with 4 mm thick rubber mat
- Damped base construction for reduced low-frequency feedback coloration
- Includes 45 RPM adapter and removable hinged dust cover



AT-LP60XBT BK **Entry-Level Turntables**

Fully Automatic Wireless Belt-Drive Turntable

The AT-LP60XBT gives you all the great features of the redesigned AT-LP60X fully automatic belt-drive stereo turntable with the added convenience of Bluetooth® wireless connectivity. The turntable pairs with speakers, headphones or other wireless devices. With its CSR BT chipset, the turntable is even able to connect to devices that support the aptX codec, which offers much-improved sound quality over the standard SBC code.



Of course, the AT-LP60XBT can also be operated just like a regular turntable with a traditional wired connection. Either way - wired or wireless - you get outstanding audio with the ease of automatic operation controlled by front-panel start, stop and tonearm lift buttons.





Bluetooth®
Technology



Plays 33-1/3
and 45 RPM
Records



Wired Connection
Available with
RCA Output Cable
(included)



Replaceable
Stylus



- High-fidelity audio with Bluetooth wireless technology
- Connects wirelessly to speakers and other devices equipped with Bluetooth wireless technology or to wired audio systems and powered speakers via included dual RCA output cable
- Compatible with aptX codec
- Fully automatic operation with two speeds: 33-1/3 and 45 RPM
- Anti-resonance, die-cast aluminum platter
- Redesigned tonearm base and headshell for improved tracking and reduced resonance
- Integral Dual Moving Magnet™ phono cartridge with replaceable diamond stylus (ATN3600L)
- AC adapter handles AC/DC conversion outside of the chassis, reducing noise in the signal chain
- Built-in switchable phono pre-amplifier for phono- or line-level output
- Includes: detachable RCA output cable (3.5 mm male to dual RCA male), 45 RPM adapter, and removable hinged dust cover



AT-LP60XUSB GM

Fully Automatic Wireless Belt-Drive Turntable

**Entry-Level
Turntables**

With the AT-LP60XUSB fully automatic belt-drive turntable you can experience your vinyl's high-fidelity audio directly or convert it to digital. The AT-LP60XUSB plays both 33-1/3 and 45 RPM records and is equipped with a USB output that allows direct connection to your computer.



This updated version of the AT-LP60-USB features a redesigned tonearm base and headshell to improve tracking and reduce resonance. Noise is further reduced by the inclusion of an AC adapter that moves the AC/DC conversion outside of the chassis where its impact on the signal chain is limited.

Audio-Technica has been a leader in phono cartridge design for more than 50 years, and that expertise shows in the AT-LP60XUSB's Dual Magnet™ cartridge with replaceable stylus. The cartridge is integrated into the headshell for assured performance and ease of setup.





Plays 33-1/3 and
45 RPM Records



USB and
Analog Output



Built-in Switchable
Phono Pre-Amplifier



Replaceable
Stylus



- Experience your vinyl's high-fidelity audio directly or convert it to digital
- Fully automatic belt-drive turntable operation with two speeds: 33-1/3, 45 RPM
- Anti-resonance, die-cast aluminum platter
- Redesigned tonearm base and headshell for improved tracking and reduced resonance
- Integral Dual Magnet™ phono cartridge with replaceable diamond stylus (ATN3600L)
- AC adapter handles AC/DC conversion outside of the chassis, reducing noise in the signal chain
- Built-in switchable phono pre-amplifier for phono- or line-level output
- Convert your vinyl records to digital audio files by downloading and using the free Mac- and PC-compatible Audacity recording software (or software of your choice)



AT-LP60X

Entry-Level Turntables

Fully Automatic Belt-Drive Turntable

Whether you're just getting into records, rediscovering a record collection long since buried away or simply adding a turntable to complete your system, the AT-LP60X fully automatic belt-drive turntable is an excellent choice.



This affordable, easy-to-use turntable plays both 33-1/3 and 45 RPM records and, with its built-in switchable phono preamp, can be connected directly to your home stereo, powered speakers, computer and other components, whether they have a dedicated phono input or not.





Plays 33-1/3 and
45 RPM Records



Built-in Switchable
Phono Pre-amplifier



Fully Automatic
Operation



Replaceable
Stylus



An update of the popular AT-LP60, the ATLP60X features a redesigned tonearm base and headshell to improve tracking and reduce resonance. Noise is further reduced by the inclusion of an AC adapter that moves the AC/DC conversion outside of the chassis where its impact on the signal chain is limited.

Audio-Technica has been a leader in phono cartridge design for more than 50 years, and that expertise shows in the AT-LP60X's Dual Magnet™ cartridge with replaceable stylus. The cartridge is integrated into the headshell for assured performance and ease of setup.

The turntable comes with a detachable RCA output cable (3.5 mm male to dual RCA male), 45 RPM adapter, and a removable hinged dust cover.

- Experience the high-fidelity audio of vinyl
- Fully automatic belt-drive turntable operation with two speeds: 33-1/3, 45 RPM
- Anti-resonance, die-cast aluminum platter
- Redesigned tonearm base and headshell for improved tracking and reduced resonance
- Integral Dual Magnet™ phono cartridge with replaceable diamond stylus (ATN3600L)
- AC adapter handles AC/DC conversion outside of the chassis, reducing noise in the signal chain
- Built-in switchable phono pre-amplifier for phono- or line-level output
- Includes: detachable RCA output cable (3.5 mm male to dual RCA male), 45 RPM adapter, and removable hinged dust cover



AT 618a

Disc Stabilizer

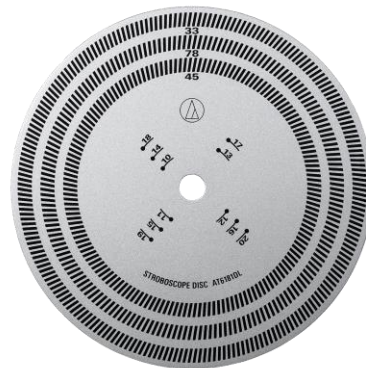
The AT618a disc stabilizer fits over the turntable spindle to hold records firmly in place, reducing resonance and improving sound quality. The stabilizer is constructed of machined brass with a protective rubber cover.



AT 6181DL

Stroboscope Disc and Quartz Strobe Light

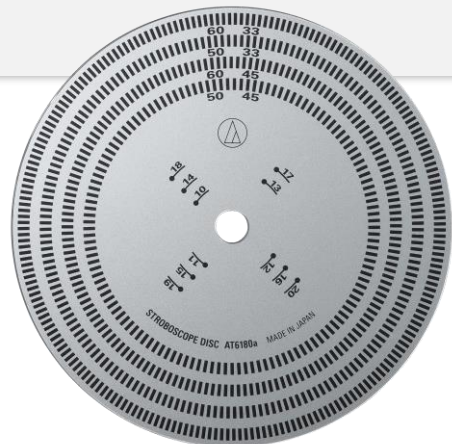
The AT6181DL kit includes a stroboscope disc along with a quartz strobe light, giving you everything you need to precisely check your turntable's rotation speed. The light's yellow LED provides a clear, accurate reading of the stroboscope's high-contrast markings for 33-1/3, 45 and 78 RPM speeds.



AT 6180a

Stroboscope

The AT6180a stroboscope enables you to check the rotation speed of your turntable. Features high-contrast markings for 33-1/3 and 45 RPM at both 50 and 60 Hz.



AT 6013a

Dual-Action Anti-Static Record Cleaner

The AT6013a record cleaner provides dual-action cleaning power that prolongs the life of your records and styli, and improves your listening experience.



AT 6012

Record Care Kit

Microdust and contaminants can cause wear and tear on your records and stylus—they diminish sound quality, too. Audio-Technica's AT6012 Record Care Kit is designed to gently remove contaminants while improving record fidelity and tracking.



AT 6003R

Cartridge Storage Case

The AT6003R is designed to store three sets of headshells with mounted phono cartridges. The case holds the headshells securely in an upright position and includes three UV-protected capsules to cover the headshells/cartridges. A slit in the side of each capsule accommodates the headshell's finger lift. Rubber feet on the bottom of the case provide increased stability.



AT 617a

Cartridge Stylus Cleaner

The AT617a cartridge stylus cleaner is a specially formulated polyurethane gel that gently removes dirt particles from the stylus tip when the stylus is lowered onto it. The gel's surface is washable and will remain tacky for years.



AT 607a

Cartridge Stylus Cleaner

The AT607a liquid stylus cleaner removes dirt and dust from the stylus tip for improved performance and extended stylus life. Bottle contains 0.33 fl. oz (10 ml) of quick-drying cleaning fluid. Applicator brush is conveniently attached to the underside of the cap.

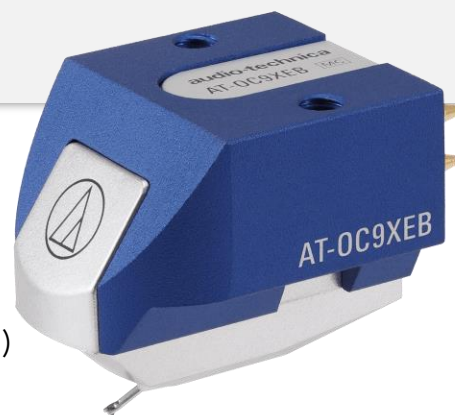


AT-OC9XEB

Dual Moving Coil Cartridge

Cartridge & Stylus

Frequency Response	20 - 30,000 Hz
Channel Separation	25 dB (1 kHz)
Vertical Tracking Angle	20 degrees
Vertical Tracking Force	1.8 to 2.2 g (standard 2.0 g)
Stylus Construction	Bonded round shank



AT XP3

DJ Cartridge

Cartridge & Stylus

Frequency Response	20 to 18,000 Hz
Channel Separation	20 dB (1 kHz)
Vertical Tracking Angle	20 degrees
Vertical Tracking Force	2.0 to 4.0 g (standard 3g)
Stylus Construction	Bonded Round Shank



ATN 95EX

Replacement Stylus

0.3 x 0.7 Diamond Elliptical
Replacement Stylus with
Bonded Round Shank

Replacement stylus for these
cartridges:
AT95EX



AT VM95C

Dual Moving Magnet Cartridge

Cartridge & Stylus

Frequency Response	20 - 20,000 Hz
Channel Separation	18 dB (1 kHz)
Vertical Tracking Angle	23°
Vertical Tracking Force	1.8 to 2.2g (2.0g standard)
Stylus Construction	Bonded Round Shank



AT VM95C/H

Headshell/Cartridge Combo Kit

Cartridge & Stylus

Frequency Response	20-20,000 Hz
Channel Separation	18 (dB at 1 kHz)
Vertical Tracking Angle	23°
Vertical Tracking Force	1.8-2.2 g (2.0 g standard)
Stylus Construction	Bonded round shank



AT VM95E

Dual Moving Magnet Cartridge

Cartridge & Stylus

Frequency Response	20-22,000 Hz
Channel Separation	20 (dB at 1 kHz)
Vertical Tracking Angle	23°
Vertical Tracking Force	1.8-2.2 g (2.0 g standard)
Stylus Construction	Bonded round shank



AT VM95ML

Dual Moving Magnet Cartridge

Cartridge & Stylus

Frequency Response	20-25,000 Hz
Channel Separation	23 (dB at 1 kHz)
Vertical Tracking Angle	23°
Vertical Tracking Force	1.8-2.2 g (2.0 g standard)
Stylus Construction	Nude square shank



AT VM95EN

Dual Moving Magnet Cartridge

Cartridge & Stylus

Frequency Response	20 - 23,000 Hz
Channel Separation	22 dB (1 kHz)
Vertical Tracking Angle	23°
Vertical Tracking Force	1.8 to 2.2g (2.0g standard)
Stylus Construction	Nude Round Shank



AT VM95SH

Dual Moving Magnet Cartridge

Cartridge & Stylus

Frequency Response	20 - 25,000 Hz
Channel Separation	23 dB (1 kHz)
Vertical Tracking Angle	23°
Vertical Tracking Force	1.8 to 2.2g (2.0g standard)
Stylus Construction	Nude Square Shank



AT VMN95C Replacement Stylus

0.6 mil conical
replacement stylus
for these cartridges:
AT-VM95C



AT VMN95E Replacement Stylus

0.3 x 0.7 mil elliptical
replacement stylus for
these cartridges:
AT-VM95E



AT VMN95ML Replacement Stylus

2.2 x 0.12 mil Microlinear
replacement stylus for these
cartridges: AT-VM95ML



AT 81CP

Cartridge

Cartridge & Stylus

Frequency Response	20-20,000 Hz
Channel Separation	18 (dB at 1 kHz)
Vertical Tracking Angle	20°
Vertical Tracking Force	1.0-1.5 g (1.25 g standard)
Stylus Construction	Bonded round shank



ATN 81 CP

Replacement Stylus

0.6 mil conical stylus for the following Audio Technica cartridges:
AT81CP, AT300P, AT3482P, AT3482H/U,
AT3482, AT90CD.



AT HS4

Universal Headshell

The AT-HS4BK is a universal ½"-mount headshell designed for use with straight 4-pin tonearms. The AT-HS4BK features an ultra-lightweight (8.5 g) aluminum die-cast body to keep vibration to a minimum and a finger lift to enable precise stylus placement.



ATN 91R

Replacement Stylus

0.6 mil conical
replacement stylus for
these cartridges:
AT91R and CN5625AL



ATN 91

Replacement Stylus

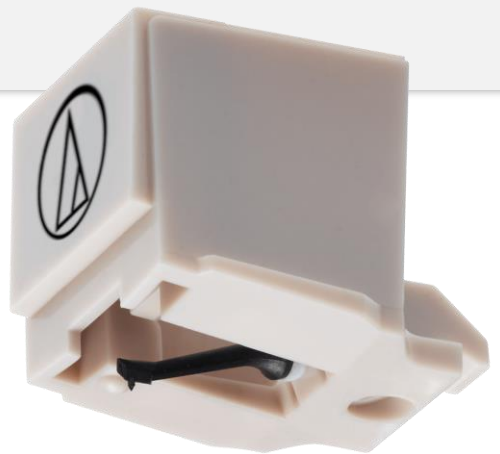
0.6 mil conical
replacement stylus for
these cartridges:
AT91 and AT3600



ATN 3600L

Replacement Stylus

- Replacement styli for AT-LP60 and AT-LP60USB
- Compatible with AT3600 - AT3600L - AT3601 - AT3651
- Compatible with AT3650L - AT3650C - AT3650 - AT3626





audio-technica

TURNTABLES