

2026



**DSBC**  
DELAWARE SMALL BUSINESS CHAMBER

2026

# Resource Guide & Membership Directory



**We support Small Business**



# Where there's a WSFS, there's a way.

WSFS Bank has been serving this region for nearly 200 years. We understand the needs, hopes and aspirations of the people and businesses who call this region home. And what's more, with our resources and capabilities we're the bank from here that can take you anywhere. So whether you want to plan for your future, buy a new home, improve the one you have, grow your business, or start a new one – WSFS is here for you. And now the question is, where do you want to go?

**WSFS** bank  
*We Stand For Service®*

BRYN  
MAWR  
TRUST



Member FDIC | NMLS #417673

A WSFS COMPANY

INVESTMENTS: NOT A DEPOSIT. NOT FDIC INSURED. NOT INSURED BY ANY FEDERAL GOVERNMENT AGENCY.  
NOT GUARANTEED BY THE BANK. MAY GO DOWN IN VALUE.





# 3-COUNTY GOLF TOURNAMENT

Rock Manor (NCC). June 29  
Wild Quail (Kent) • Sept 25  
The Rookery (Sussex) Oct 26

Join the Delaware Small Business Chamber for the inaugural  
3-County Golf Tournament spanning all three Delaware Counties!

Breakfast & Bloody Marys • All-Day Snacks • Hot Dog & Burger Grill

• BBQ Awards Lunch

Great golf and fun  
including a drone drive drop

## Sponsorship Levels

- Presenting Sponsor: \$4,500
- Gold Sponsors: \$3,000
- Silver Sponsors: \$2,500
- Breakfast Sponsors: \$400
- Lunch Sponsors: \$750
- Golf Cart Fleet Sponsor: \$650
- Award Sponsors: \$250
- Specialty Hole Sponsors: \$250
- FLAG SPONSORS: \$150
- Hole Sponsors: \$100

Take **15% OFF** to sponsor ALL THREE TOURNAMENTS!

**Foursome \$600 • Individual \$175**

- Beverage Cart Sponsors: \$500
- 19<sup>th</sup> Hole Sponsors: \$350
- Snack Sponsors: \$50

[www.dsbcgolf.com](http://www.dsbcgolf.com)



# Contents

<b>DSBC Ultimate 3-County Golf.....</b>	<b>3</b>
<b>About Us, Mission &amp; Vision.....</b>	<b>4</b>
<b>Board of Directors .....</b>	<b>5</b>
<b>Letters from DSBC Pres &amp; CEO.....</b>	<b>6</b>
<b>Letter from 2025 Chair .....</b>	<b>7</b>
<b>Letter from DSBC Foundation-----</b>	<b>8</b>
<b>Useful Phone Numbers.....</b>	<b>9</b>
<b>Fun Facts about Delaware.....</b>	<b>10</b>
<b>State Symbols .....</b>	<b>11</b>
<b>US Census – State of DE.....</b>	<b>13</b>
<b>Highlights by County.....</b>	<b>14</b>
<b>Maps of Each County.....</b>	<b>15</b>

<b>Starting and Structure Basics.....</b>	<b>16</b>
<b>Starting a New Business Checklist....</b>	<b>17</b>
<b>Delaware Agencies.....</b>	<b>18-19</b>
<b>Membership Benefits.....</b>	<b>19</b>
<b>Membership Levels Chart.....</b>	<b>20</b>
<b>DSBC Facts and Info.....</b>	<b>21</b>
<b>Events 2026.....</b>	<b>21</b>
<b>DSBC Business 2.0 .....</b>	<b>22</b>
<b>DE Open for Business.....</b>	<b>22</b>
<b>Dates to Remember.... ..</b>	<b>23</b>
<b>Chamber by the Numbers.....</b>	<b>24</b>
<b>Directory Alphabetically .....</b>	<b>25-27</b>
<b>Member Directory by Category.....</b>	<b>27-35</b>
<b>Build your Brand.....</b>	<b>35</b>

## About Us

The Delaware Small Business Chamber is an independent chamber of commerce dedicated to advocating for small business owners and providing crucial resources for new and young businesses. We focus on companies with 0 to 100 employees and those that support those businesses. Through targeted programs and events, we aim to create a small business friendly environment and enhance the overall business climate in Delaware.

DSBC offers programs and opportunities for small business owners to meet and work with their peers to help start, build and maintain their companies.

We are proud to abide by a positive code of ethics, even if it means turning down members. We are selective, approving only the members who belong to or support the backbone of the future – small business.

The Delaware Small Business Chamber is a 501(c)(6) exempt organization.

## Mission Statement

Our mission is to empower small businesses with the tools and support they need to thrive, ensuring a vibrant and sustainable future for our community.

## Vision

The Delaware Small Business Chamber helps small businesses, and the larger ones that support them with opportunities to connect, grow and thrive in the community. We are a voice where needed to advocate for our business community.

Publication designed by Delaware Small Business Chamber 700 Capitol Trail #11F Newark DE 19711  
**302-492-2120 [www.dsbchamber.com](http://www.dsbchamber.com)**

*We are an independent Delaware chamber of commerce supporting small businesses throughout the State of Delaware and the surrounding business communities. Our focus is on businesses with 0 to 100 employees and any business that economically supports our local small business community.*



# 2026 Board of Directors & Staff

## Executive Board



Nicole Hammond  
Chair  
CAN Management



Tracy Feinsilver  
Vice-Chair  
WSFS



Kathleen Wood  
Secretary  
Delaware Hospice



Bethany Bell  
Treasurer  
Bell Bookkeeping



Melissa Woolman  
Ex-Officio  
Choice Insurance

## Directors



Todd Wilson  
Dover Federal CU



Carla Guzzi  
Bing's Bakery



Steff DiMartine



David Wilderman  
Wilderman Physical  
Therapy



Dylan Hannum  
Birdie's Links &  
Drinks



Kristin Donovan  
Aging in Place  
Senior Care Services



Sherri Hill  
Redfin

## Staff



Bob Older  
President/Founder



Deanna Wasmund  
Director of Membership  
Development





Dear Small Business Owners and Community Supporters,

As the President and Founder of the Delaware Small Business Chamber, it fills me with immense pride and excitement to welcome you to our 2026 Resource Guide and Membership Directory.

2026 will become another landmark year for our chamber and for small businesses across Delaware. Building on the momentum of another outstanding year, we're rolling out a fresh wave of events, programs, and opportunities—each one designed to help you connect, learn, and thrive. The energy and innovation I see in our statewide small business community inspire me every day, and I am thrilled for what's ahead.

This year, get ready for new signature events, expanded networking opportunities, and innovative resources that reinforce our commitment to you. Whether you're a longtime member or just discovering The DSBC, there has never been a better time to get engaged. Our chamber is the only statewide organization solely focused on the needs and success of small businesses—your participation makes us stronger and your voice helps us grow.

I urge everyone to not just attend our events, but to truly get involved. Support each other, share your experiences, and help us build a supportive, collaborative environment where every small business can shine. And don't forget: the DSBC Foundation, our 501(c)(3) arm, is making a real impact in helping small businesses and communities across Delaware. You'll find a letter from the Foundation Chair on page 9, and I hope you'll consider lending your support to their critical mission as well.

Together, we're not just building businesses—we're building community, opportunity, and a brighter future for Delaware. Let's make 2026 a year to remember.

With gratitude and excitement,

Bob Older  
President & Founder  
Delaware Small Business Chamber





## From the 2026 Chair

Dear DSBC Members and Friends,

As the Chairperson of the Delaware Small Business Chamber for 2026, I am thrilled to connect with you at the start of a year that promises to be transformative for small businesses across our great state.

2026 is all about celebrating small business—your innovation, resilience, and the impact you have on Delaware's communities. The past year has shown us just how essential small businesses are to our local economy. As we move forward, our commitment to supporting you is stronger than ever. Whether you're navigating new challenges or ready to seize exciting opportunities, the DSBC is here to champion your efforts every step of the way.

This year, we are doubling down on initiatives that matter most to small business owners: practical resources, dynamic networking, and tailored advocacy. Expect more targeted workshops, expanded opportunities to showcase your business, and innovative programs designed with your feedback at the center. Your voice is invaluable to us!

If you're not yet a member of the DSBC, I wholeheartedly invite you to experience the difference our chamber makes. Join us at an upcoming event, connect with fellow entrepreneurs, and discover how being part of this vibrant community can elevate your business in 2026.

Remember, small businesses are the heart of Delaware. In 2026, let's continue to build a vibrant, supportive ecosystem where your business can thrive. Stay engaged, share your insights, and lean on the DSBC as your dedicated partner in growth and success.

Thank you for your passion, perseverance, and for choosing to be a part of the Delaware Small Business Chamber. Here's to a landmark year for all of us!

With appreciation,

Nicole Hammond  
Chairperson  
Delaware Small Business Chamber







Dear Friends and Supporters of the Delaware Small Business Chamber & DSBC Foundation

As Chair of the DSBC Foundation for 2026, I am excited for the upcoming year and have a renewed sense of purpose and optimism for what we can accomplish together in the year ahead.

The DSBC Foundation has already begun to make a meaningful impact on Delaware's small business landscape. But there is so much more we can do—and with your help, we can reach even greater heights this year.

The more support we receive, the more grants and resources we can provide to small business owners who need it most. Every donation—large or small—directly fuels grants to fill vacant storefronts, seed promising new ventures, and expand opportunities for underrepresented entrepreneurs in our state. Your contributions also help fund training and employment programs for unemployed and underemployed residents, creating a ripple effect of economic growth and revitalization in our communities.

To truly maximize our impact in 2026, we are seeking not only financial contributions but also the invaluable gift of your time and expertise. If you have experience in grant writing, fundraising, or nonprofit leadership, we invite you to join our passionate volunteers—perhaps as a committee member or on our Foundation Board. Your skills can help us secure new funding and expand our reach, ensuring every dollar goes even further.

This year, we are determined to grow our network of champions for small businesses. If you care about fostering entrepreneurship, revitalizing neighborhoods, and supporting Delaware's economic health, there is a place for you in the DSBC Foundation family. Together, we can unlock opportunities for countless small business owners and create lasting change.

Thank you for believing in our mission and for all you do to strengthen Delaware's small business community.

We look forward to your support—whether through donations, volunteering, or spreading the word—as we make 2026 our most impactful year yet. Explore opportunities at [www.dsbcfoundation.org](http://www.dsbcfoundation.org).

With appreciation,

Casey Fitzgerald  
Chair





# Useful Phone Numbers

EMERGENCIES..... 911

Child Abuse Reporting Hotline ..... 800-292-9582

Delaware Anti-Terrorism Hotline .....00-FORCE12

Delaware Business License Dept ....302-577-8778

Delaware Gambling Hotline ..... 888-850-8888

Division of Corporations .....302-739-3073

Division of Revenue -

Gross Receipts & Withholding ..... 302-577-8205

Division of Revenue -

Corporate Tax Refunds & Returns .302-577-8781

Insurance Department ..... 302-259-7552

NCC Executive Office ..... 302-395-5101

Suicide Prevention Lifeline 800-652-2929 / 988

Bureau of Vital Statistics ..... 302-283-7130

Consumer Protection Agency ..... 302-577-8600

Delaware Attorney General ..... 302-577-8500

Delaware Crime Stoppers ..... 800-TIP-3333

Department of Labor Hotline ..... 302-761-6576

Division of Motor Vehicles -

- New Castle ..... 302-326-5000

- Dover ..... 302-744-2500

- Georgetown ..... 302-853-1000

Domestic Violence Hotline ..... 302-762-6110

Kent County Administrator ..... 302-744-2305

Register of Wills ..... 302-395-7800

Sussex County Admin ..... 302-855-7742



**Elinor's MAID**

## Cleaning Service

- Regular cleans
- Deep cleans
- Pre and post sale
- Move in move out
- Oven and Fridge
- Spring cleans
- Office clean

**f Elinor's Maid**

**✉ Elinorsmaid@gmail.com**

**☎ (302) 416-0399**

Powered by:



Purchase Here!

Presented by:



## DSBC GIFT CARD

SEND A DIGITAL GIFT CARD TO FRIENDS,  
FAMILY, CO-WORKERS & MORE!

Valid at these participating locations:

[app.yiftee.com/gift-card/delaware-small-business-chamber/locations](http://app.yiftee.com/gift-card/delaware-small-business-chamber/locations)

Questions: [support@yiftee.com](mailto:support@yiftee.com)



# FUN FACTS

## == ABOUT THE STATE OF ==

# DELAWARE



**First State:** Delaware holds the distinction of being the first state to ratify the U.S. Constitution on December 7, 1787. This earned it the nickname "The First State."

**Small Size, Big Heart:** Delaware is the second smallest state in the U.S., covering approximately 1,949 square miles. Despite its size, it packs a punch with diverse attractions ranging from beaches to historical sites.

**Tax Haven:** Delaware is known as a business-friendly state, offering numerous tax advantages. There is no sales tax, making it a popular destination for shoppers and business incorporations, with over a million companies registered here.

**Home of the Blue Hen:** The state bird of Delaware is the Delaware Blue Hen, recognized for its unique blue color and fighting spirit. The Hen even served as a mascot for Delaware military regiments during the Revolutionary War.

**Famous Beaches:** Delaware boasts some of the most beautiful beaches on the East Coast, including Rehoboth Beach and Dewey Beach. These popular vacation spots are known for their boardwalks, fishing, and nightlife.

**Historical Landmarks:** Delaware is rich in history, featuring many landmarks such as the Old State House, where the Delaware Assembly met until 1931, and the New Castle Court House, which dates back to 1732.

**Home to DuPont:** The DuPont Company, founded in 1802, is one of the oldest and largest chemical companies in the world and has played a significant role in Delaware's economy and innovation.

**Arts and Culture:** The state also has a thriving arts scene. The Delaware Art Museum houses an impressive collection of American art and illustration, while the Grand Opera House and DSBC Member The Candlelight Theatre hosts numerous performances throughout the year.

**Proud Sports Tradition:** Delaware sports fans are passionate, especially about college sports. The University of Delaware's Blue Hens football team has a strong following and has won multiple national championships.

**The Delaware River and Bay:** This important waterway provides vital transportation and trade routes. It also offers recreational opportunities such as fishing, kayaking, and boating, attracting many outdoor enthusiasts.

**Wedding Destination:** With its stunning landscapes and charming small towns, Delaware is a popular destination for weddings. The state is home to many beautiful venues, including vineyards and coastal resorts.

**Culinary Treasures:** Delaware is famous for its seafood, particularly blue crabs and scrapple (especially made by DSBC Member RAPA Scrapple, celebrating 100 years in 2026). We celebrate a mix of coastal and traditional flavors.

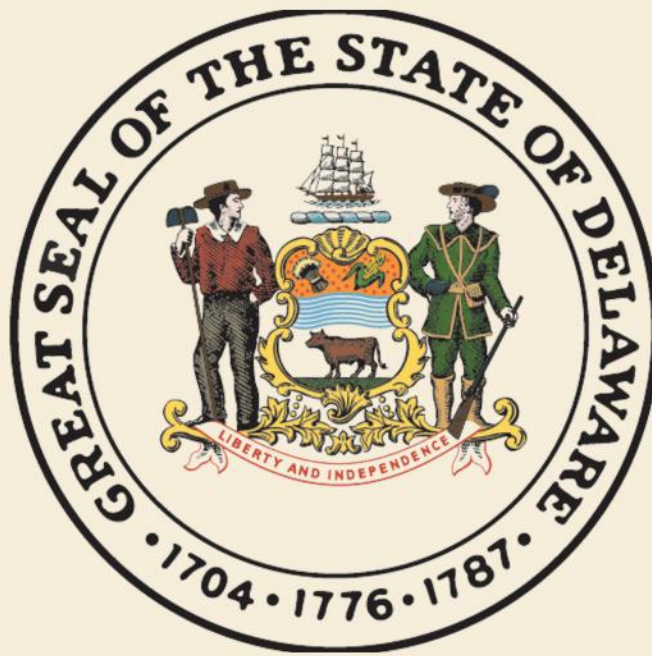
**The Dover Motor Speedway:** Also known as the "Monster Mile," this NASCAR track is one of the most recognizable in the sport and hosts major racing events throughout the year.

**Diverse Ecosystems:** Delaware features diverse ecosystems, from sandy beaches & wetlands to forests and rolling hills. The state is home to numerous parks and wildlife refuges, promoting outdoor recreational activities.

**Year-round Events:** Delaware hosts various festivals throughout the year, celebrating everything from the state's seafood to its artistic talent. Notable events include DSBC's FunFest with Taco Competition and Zero Proof Fiesta, held the 2nd Saturday each September, among many others.

In conclusion, Delaware may be small, but it is packed with unique features, rich history, and vibrant culture that make it a fascinating state to explore and enjoy. Whether you are a resident or a visitor, there is always something to discover in "The First State."





# State Symbols

Beverage: Milk

Colors: Buff and Colonial Blue

Fossil: Belemnite

Insect: Lady Bug

Song: "Our Delaware"

Bird: Delaware Blue Hen

Fish: Weakfish

Fruit: Strawberry

Marine Animal: Horseshoe Crab

Tree: American Holly

Tall Ship: The Kalmar Nyckel

Flower: Peach Blossom

Herb: Sweet Goldenrod

Macroinvertebrate: Stonefly

Wildlife Animal: Gray Fox







Experienced local  
senior care for your  
peace of mind.

**302.751.3324**

**VisitingAngels.com/Dover**

Each Visiting Angels agency is a franchise that is independently owned and operated. The Franchisor, Living Assistance Services Inc., does not control or manage the day-to-day business operations of any Visiting Angels franchised agency. \*2025 Visiting Angels is a registered trademark of Living Assistance Services, Inc. Lic. #PASA-076 | NPI: 1881264711.



# PRIMARY CARE

PRIMECARE Comprehensive Health

New Primary Care  
Office.  
Accepting New Patient

## OUR SERVICE

Chronic Disease Management  
Weight loss Management  
Preventative Care  
Geriatric Care  
Mental Health  
Urgent Care  
And much more

### CONTACT US :

(T) 302-204-1639  
(F) 302-209-6927

[www.primecarehealthcare.com](http://www.primecarehealthcare.com)  
[info@primecarehealthcare.com](mailto:info@primecarehealthcare.com)

2600 Glasgow Ave, STE 203  
Entrance 6  
Newark, DE 19702  
Next to Safeway Supermarket



Let's connect

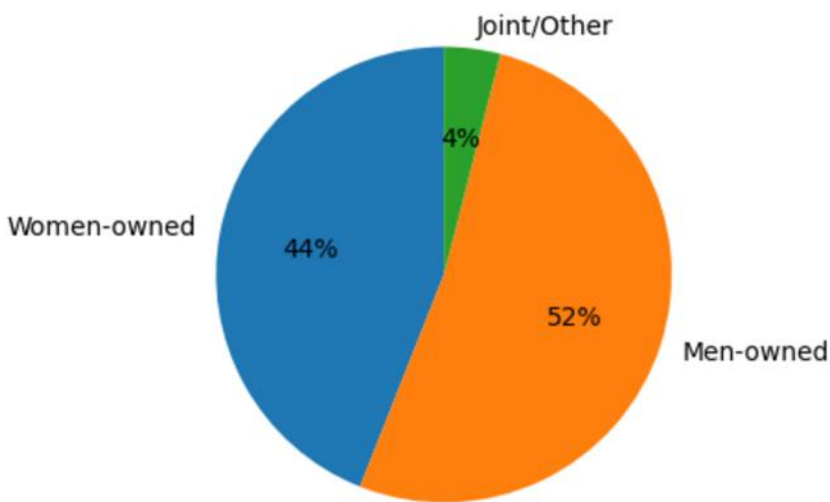


# U.S. Census Bureau

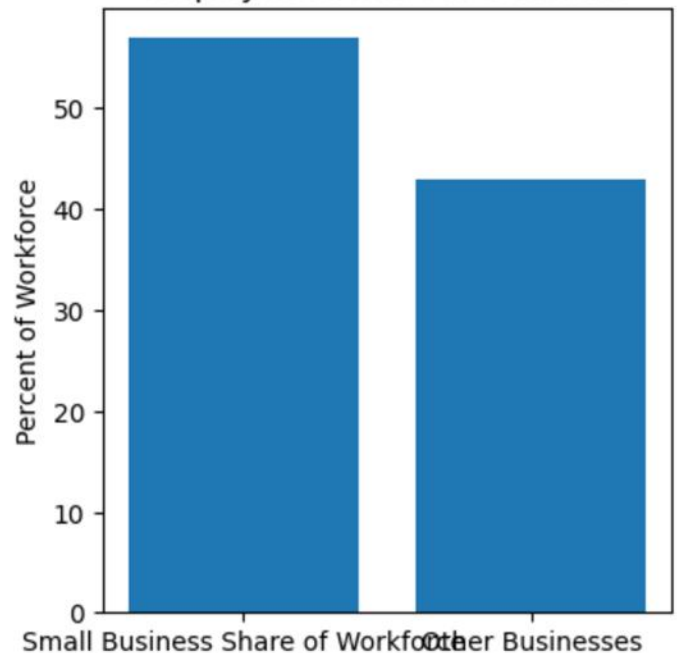
## Delaware Business Numbers & Demographics

Delaware Small Business Snapshot - 2026  
96,400 Small Businesses | 57% of Workforce | \$15.1B in Wages  
Source: SBA Office of Advocacy

Business Ownership (2026 Estimates)



Employment Share in Delaware



**Women-owned businesses: 44%**  
**Minority-owned firms: ~21,500**  
**Veteran-owned businesses: 9%**  
**Non-veteran-owned firms: ~74,000**

📈 **Small businesses remain Delaware's economic backbone**

👩 **Women ownership continues steady growth**

👤 **Veteran entrepreneurship exceeds national average**

💼 **Small firms generate over half of all private wages**



# Highlights by County

Delaware consists of three counties, each with a distinct flavor that contributes to the State's versatile community and business landscape.

## New Castle County:

New Castle County is the northernmost of Delaware's three counties and is the most populous, with a population of 570,719 as of the 2020 census. This represents nearly 60% of the state's total population of 989,948. The county seat is Wilmington, the largest city in Delaware, known for its vibrant culture and economic activity.

The county is home to many popular attractions that draw visitors from near and far. Highlights include the Newark Reservoir, perfect for outdoor activities, and renowned cultural sites like the Hagley Museum, which showcases the history of American industry, and Winterthur Museum, Garden, and Library, famous for its extensive collection of decorative arts and beautiful gardens.

New Castle County is divided into eleven "hundreds", which include Brandywine, Christiana, Wilmington (which functions as its own hundred), Mill Creek, White Clay Creek, Pencader, New Castle, Red Lion, St. Georges, Appoquinimink, and Blackbird. Each hundred contributes to the county's rich tapestry of communities, offering a mix of suburban living, historical landmarks, and recreational opportunities, making it a dynamic place to live and visit.

## Kent County:

Located in the central part of Delaware, Kent County is the state's least populous county, with a population of 181,851 as of the 2020 census. The county seat, Dover, is also the state capital and is named after Kent County in England.

Kent County is home to a vibrant Amish community to the west of Dover, consisting of nine church districts and about 1,650 residents. The Amish settled here in 1915, offering traditional goods such as homemade food, handcrafted furniture, quilts, and artisanal crafts.

The county features Delaware's Quaint Villages, including charming towns like Dover, Smyrna, Bowers Beach, Harrington, Camden, and Milford, each showcasing its own unique character and history.

Kent County beautifully combines scenic landscapes, cultural richness, and historical significance.

## Sussex County:

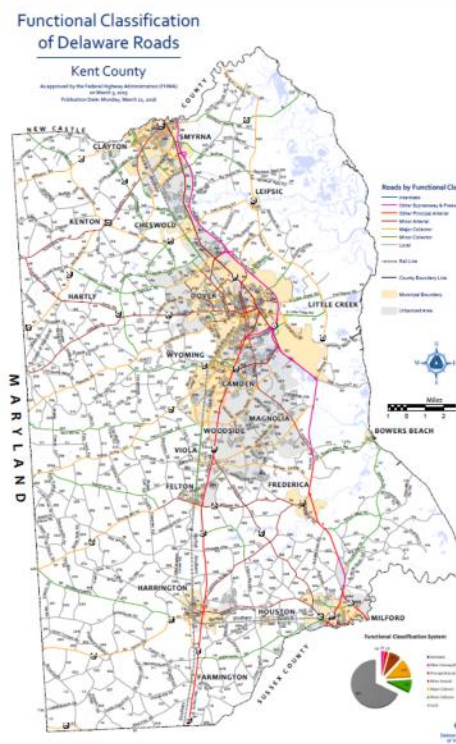
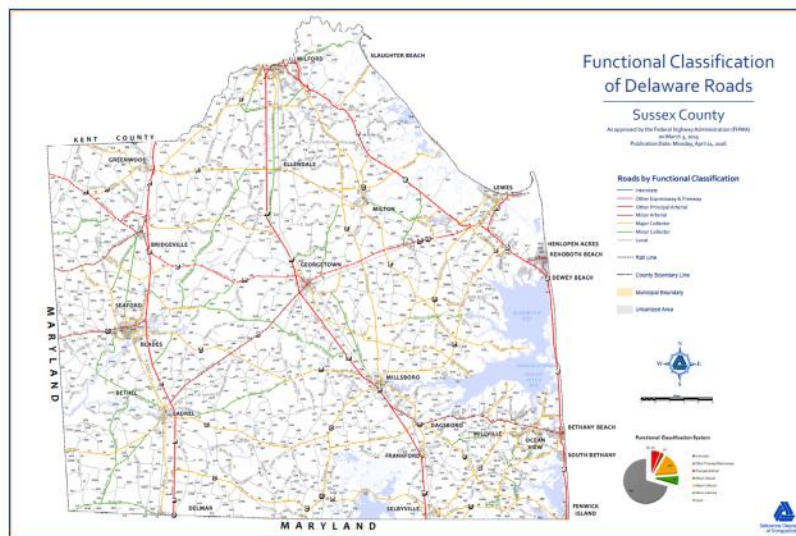
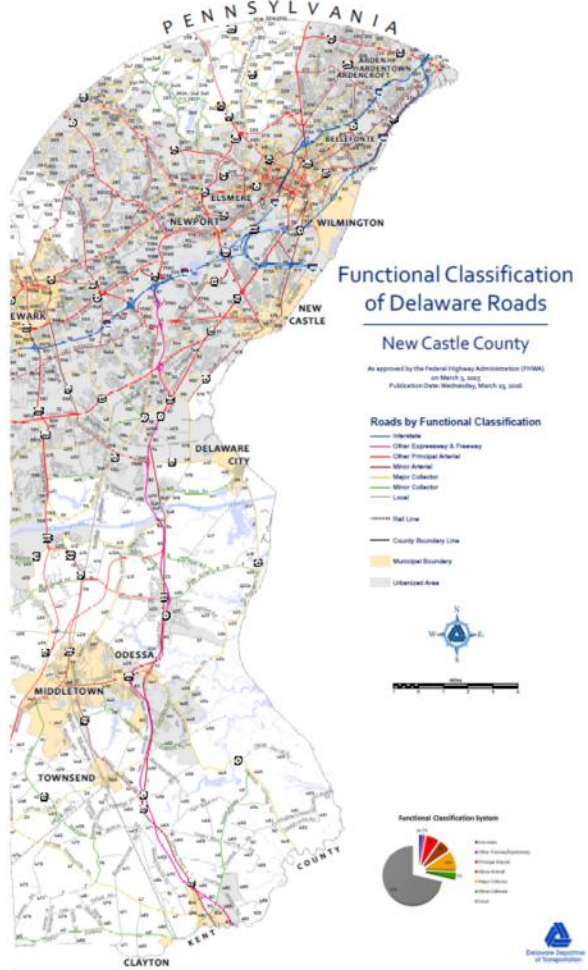
Sussex County, positioned in the southern region of Delaware, is the state's largest county by land area, covering an impressive 938 square miles, with Georgetown serving as the county seat. The history of Sussex County is rooted in early exploration and settlement. The first European presence in Delaware was established by the Dutch in 1631, near what is now Lewes on the picturesque Atlantic Coast.

Sussex County wasn't officially organized until 1683, under English colonial governance. This vibrant county was home to Zwaanendael, Delaware's inaugural European settlement—a Dutch trading post situated in present-day Lewes. On June 3, 1631, Dutch captain David Pietersen de Vries landed on these shores to create a whaling colony, marking a significant moment in mid-Atlantic history as part of the exploration and exploitation of the New World.

The rich history and diverse landscape continue to shape Sussex County's identity today.



# DE Maps



Let's find your  
happy place!



**Karen Burke,**  
REALTOR®  
Lic. in DE, PA, & MD

cell 302.540.4071  
direct 302.234.6007  
office 302.239.3000  
email kburke@psre.com

Local Real Estate Guidance. Friendly, Expert Service.



home search, market info, & more!

[karenjburke.com](http://karenjburke.com)



# STARTING & STRUCTURE BASICS

## STARTING A BUSINESS IN DELAWARE

- Choose a business entity
- Register with the Delaware Division of Corporations
- Obtain business licenses
- Avoid common startup mistakes



## BUSINESS TAXES IN DELAWARE

- Gross Receipts Tax
- Withholding & Unemployment Taxes
- Estimated Taxes
- Local vs. State Requirements

### DID YOU KNOW?

The Delaware Small Business Incentive Program offers grants to qualified small businesses.





# Starting A New Business Checklist

Form a Business Entity: <https://corp.delaware.gov/howtoform/>

Incorporation Information: <https://corp.delaware.gov/>

Get a Business License: State of Delaware: <https://onestop.delaware.gov/osbripublic>

For information on all countries visit: <https://delaware.gov/topics/municipalities.shtml>

Please note: If you are doing business in any of the following incorporated towns, you may need to contact them for additional business license information.

## New Castle County

Arden Ardencroft Ardentown Bellefonte Delaware City Elsmere Middletown New Castle Newark  
Newport Odessa Townsend Wilmington

## Kent County

Bowers Beach Camden Cheswold Clayton Dover Farmington Felton Frederica Harrington Hartly  
Houston Kenton Leipsic Little Creek Magnolia Milford Smyrna Viola Woodside Wyoming

## Sussex County

Bethany Beach Bethel Blades Bridgeville Dagsboro Delmar Dewey Beach Ellendale Fenwick Island  
Frankford Georgetown Greenwood Henlopen Acres Laurel Lewes Millsboro Millville Milton

Ocean View Rehoboth Beach Seaford Selbyville Slaughter Beach South Bethany

Be sure to register for the  
Dec 8, 2026  
DSBC Holiday Party here



218 W MARKET STREET, WILMINGTON, DE

[ilovedomspizza.com](http://ilovedomspizza.com)

Eat In ~ Take Out ~ Private Event Space

Customized menus for private parties

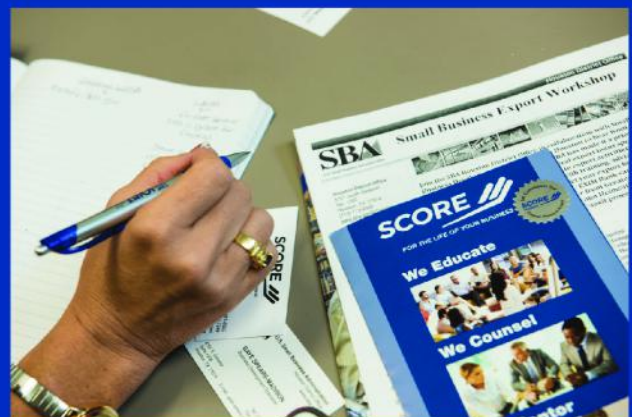
**(302) 998-7154**

**SCORE** 

**Delaware**

FOR **50+**  
YEARS

Providing Mentoring and Subject Matter Expertise  
to Entrepreneurs and Business Owners



**Need help starting or growing your business?**

**SCORE provides**

**Free Mentoring + Workshops**

Business Plans | Papers and Documentation | Marketing | Finance  
Ready to become a Volunteer | Client | Workshop attendee

Visit **SCORE.ORG/Delaware**

Contact us 302-661-2366 [contact0042@scorevolunteer.org](mailto:contact0042@scorevolunteer.org)

SCORE is a 501(c)(3) non-profit organization





# Delaware Agencies

## **Delaware Division Of Small Business**     **[business.delaware.gov](http://business.delaware.gov)**

The division of Small Business is focusing on this key part of the community like as part of a reinvented and reinvigorated approach to the state's economic development. The division is a champion for Delaware small businesses and to help you take your company to the next level

## **Delaware Small Business Development Center**     **[DelawareSBDC.org](http://DelawareSBDC.org)**

The Small Business Development Centers (DSBDC) will answer your questions about managing a small business and provide information about small business issues. The DSBDC provides information, training, and free, one on one counseling for small business owners and those interested in starting a business. The SBDC can obtain a market feasibility study for your business. It contains data such as a detailed demographic profile of your market area and a great amount of other information.

## **Delaware Manufacturing Extension Program**     **[DEMEP.org](http://DEMEP.org)**

The Delaware Manufacturing Extension Partnership (DEMEP) is a non-profit resource organization offering affordable, confidential technical and business solutions to the small and medium sized manufacturers of Delaware. DEMEP provides sound technical field agents and consultants who specialize in solving problems that are unique to manufacturers.

## **Service Core Of Retired Executives (SCORE)**     **[SCOREDelaware.com](http://SCOREDelaware.com)**

SCORE provides one on one counseling for people thinking about starting a small business and for current business owners from retired executive volunteers. The organization also offers low cost business skill workshops throughout the state.

## **Delaware Innovation Fund**     **[DelawareInnovationFund.com](http://DelawareInnovationFund.com)**

The Delaware Innovation Fund is a seed in early stage venture capital firm established as a public/private sector initiative to assist Delaware companies in the critical pre-seed and early stage of formation. The fund provides financial and technical assistance to Delaware-area based businesses which have the potential to launch innovative products and processes into national markets, to create new jobs, and make a significant contribution to the economic diversity and the technology base of Delaware's communities.

## **U.S. Small Business Administration**     **[SBA.gov](http://SBA.gov)**

The mission of the U.S. Small Business Administration Delaware District Office is to aid, counsel, assist, and advocate the interests of the state's small business community, utilizing various financial, investment, procurement, and business development programs and resources.

## **Office Of Supplier Diversity**     **[GSS.OMB.Delaware.gov/OSD](http://GSS.OMB.Delaware.gov/OSD)**

The Office of Supplier Diversity (OSD) assist diverse suppliers: minority, women, veteran, service disabled veteran, and individuals with disabilities owned businesses and Small Business Focus (SBF) program vendors in competing for the provision of commodities, services, and construction to State departments, agencies, authorities, school districts, higher education institutions, and all businesses. Business networking, development, and opportunity events and fliers are shared on listserv to receive emails with various business development and opportunities as shared with the community. You may self register by typing the following URL address into your internet browser:

<http://directory.osd.gss.omb.delaware.gov/self-registration.shtml>



DNREC's mission is to protect and manage the state's vital natural resources, protect public health and safety, provide quality outdoor recreation and to serve and educate the citizens of the First State about the wise use, conservation, and enhancement of Delaware's environment. The Small Business Assistance Program (SBAP) within DNREC was created through the Clean Air Act Amendments of 1990 and is a free service available to all new and existing small businesses located in the State of Delaware.

The SBAP can:-Serve as initial contact with DEREK; answer your environmental questions or refer you to the right person  
-Provide specific information for your industry detailing how to comply with environmental regulations  
-Provide guidance for completing permit applications, forms, and other required paperwork  
-Discuss compliance issues in a confidential manner; help resolve permitting and compliance disputes

## **Delaware Small Business Chamber** **DSBChamber.com**

We are your true resource to help start, build, and maintain small to medium-sized businesses in Delaware and the surrounding region. While not all our members are small companies, all members do business with local small businesses.

Our Business 2.0 program is helping people get started in their own business and those looking to potentially expand an existing business.

### **Membership Levels & Benefits**

Rather than requiring businesses to pay for a cookie-cutter packaged membership, we have created custom tiers to meet the needs of every business type. You can invest in a level that will provide the highest return on investment (ROI) for your membership and participation with the DSBC. Each membership level has a yearly fee or a monthly payment plan. There are many more benefits to being a member. Check us out. All members receive:

From 70 to over 100 Free Statewide Events: Mixers, Seminars & Networking

New Member Bagels & Benefits Breakfast

Member to Member and Hot Deals Program

Referral Program

Email Updates & Alerts

Landing page with digital coupons, catalogs, virtual trade show booth, intro video, texting directory\*

Discounted Constant Contact Program

Ribbon Cutting Program & Open House Program

New Member Spotlight in Newsletter

Job Listing Board

Mentorship Program

Chamber Office Promotional Display

Promotional Items included in New Member Basket

DSBC Swag: Membership Certificate, Decals, Logos, Badges, and New Member Basket

Virtual Brochure Rack

Loyalty Prize Program

No Application Fees.

The one-time digital setup fee offers over \$3000 worth of value..



# ADVERTISING, SPONSORSHIP, ATTENDANCE COSTS BUILT INTO MOST MEMBERSHIP LEVELS

USE CHAMBER DOLLARS TO PAY FOR EXTRA COSTS

## MEMBER LEVEL

OPPORTUNITIES	Member >25 emp	Executive >50 emp	Entrepreneur	President	Chairman
FREE Event Attendees	1	2	3	4	5
Chamber Dollars		\$250	\$500	\$1,900	\$3,400
Online Event Promos		✓	✓	✓	✓
Meeting Space Rental	*fee	*fee	FREE	FREE	FREE
Digital Buildout (DSBC Website)	\$75	D\$BC	D\$BC	✓	✓
Custom Sponsor Plaque				✓	✓
Logo Displayed at Events	Sponsorship Required	Sponsorship Required	Sponsorship Required	✓	✓
Press Release	\$50	D\$BC	D\$BC	✓	✓
Category Listings	1	2	3	4	5
Ad in Resource Guide	*Reg Rate	*Reg Rate	D\$BC	D\$BC	D\$BC
Newsletter Promo			✓	✓	✓
After Hrs/Open House		✓	✓	✓	✓
Awards Brunch Ticket	*Reg Rate	D\$BC	D\$BC	D\$BC	2
Awards Brunch Ad	*Reg Rate	*Reg Rate	D\$BC	D\$BC	✓
Funfest Booth/Sponsor	*Reg Rate	*Reg Rate	D\$BC	D\$BC	✓
Mixer Sponsor	\$250	\$250	1 Incl	2 Incl	3 Incl
Awards Brunch Sponsor	*Reg Rate	*Reg Rate	Discounted Rate	D\$BC	D\$BC
Speaker Series Sponsor	*Reg Rate	*Reg Rate	Discounted Rate	D\$BC	D\$BC
Beefsteak & Beyond Sponsor	*Reg Rate	*Reg Rate	Discounted Rate	D\$BC	D\$BC
Total Value	\$1,700	\$3,000	\$4,500	\$8,500	\$13,250
Annual Membership	\$325	\$500	\$1,200	\$2,500	\$4,000
Monthly Membership	\$30	\$50	\$120	\$250	\$400

Non-profit Membership \$250 \$25/Month  
Individual - Not affiliated with a company \$150  
Student Membership\* \$75

D\$BC = Purchase with Chamber Dollars

✓ = Included with Membership

Ask about our exclusive Blue Diamond Membership.



# Delaware Small Business Chamber

## Facts & Information

### All-Member Ambassador Group:

Most chambers have Ambassador groups that consist of Chamber volunteers who serve as the member relations team for the Chamber. These volunteers call on existing members throughout the year. Ambassadors also represent the Chamber at grand openings, ribbon cuttings, and annual events. The Ambassadors play active roles in Chamber activities. The Delaware Small Business Chamber believes that ALL members should be part of that process & is the only chamber with an all-member ambassador group. Come be apart of ours.

### Membership based on value and not just the size of a business:

Instead of offering entrepreneurs a cookie-cutter package, we have created custom tiers to meet the needs of every business type. You can invest in a level that will provide the highest return on investment (ROI) for your membership and participation with the DSBC. Each level has a value of 3-6 times investment.

### More inclusions than any other Chamber:

With over 130 total events yearly throughout the State of Delaware and the surrounding area, the DSBC on average, hosts: 2 mixers a month; and 2 seminars each month; Members may attend one 6-Top Mingle in New Castle and 1 in Sussex/Kent County each month allowing members to attend up to 72 events or more each year for FREE as part of the low membership rates. The Delaware Small Business Chamber also has special programs and series and a variety of signature events for a nominal fee, including several B2B and B2C opportunities. The DSBC's digital program for members is unparalleled by any organization in Delaware.

### Code of Ethics:

We are proud to abide by a positive code of ethics, even if it means turning down members. We are selective, approving only the members who belong to or support the backbone of the future - small business. The Delaware Small Business Chamber is an independent chamber of commerce supporting local small business in Delaware and the surrounding areas. We focus on businesses with 0-100 employees and larger companies that economically support our local small business community.

## Check out new DSBC events for 2026

- Delaware's First 3-County Golf Tournament
- Behind the Curtain
- May Fair - A Vendor Market
- Zero Proof Fiesta at FunFest
- Pastries & Benefits
- DSBC Firewalk, seminars & Workshops
- Shredding Event

**Check out the DSBC website's Calendar of Events for all details and to register for these and other great events.**





# The Delaware Small Business Chamber is **OPEN FOR BUSINESS** every day to help you get started in business. Call us and let us know how we can help you (302) 482-2120.

The DSBC "Circle of Influence" includes categories of members who can help you in many aspects of starting your business. These industries include: Advertising, Attorney, Bookkeeping, Credit Card Services, Meeting Space, Printing, Telecom & Computer Sales and Service, Worker's Compensation, Media Consulting, Web Design and Development, and many others.

For other personal or business tasks, the Delaware Small Business Chamber would like to help you have all the resources you need. We have created topics that people have in their everyday life and we have created a circle of businesses that work together to help you in that task or may be resources for your business for referrals.

## BUSINESS2.0



A program bringing together key partners to help all people start and expand their small businesses

The third Thursday  
monthly

11Am - 1PM

at the DSBC office

(until we find a bigger location)

Know someone trying to start  
a small business?

Send them to Business 2.0

**302-482-2120**

**Check out our Circles of Influence for other businesses that can help you in your business and partner with companies to work together.**

**<https://www.dsbchamber.com/circle-of-influence>**

1. If you form a corporation in Delaware, you must pay an annual Franchise Tax for privilege of incorporating in Delaware. The Franchise Tax is payable to the Delaware Division of Corporations. The fee is based on the number of authorized shares within the corporation. If corporate in another state but doing business in Delaware, you must still register with the Delaware Division of Corporations.

Delaware Division of Corporations  
PO Box 898 | Dover, Delaware 19903  
Phone: (302)739-3073  
[www.corp.delaware.gov](http://www.corp.delaware.gov)

2. If you form a corporation in Delaware, you must pay Corporate Income Tax with the Delaware Division of Revenue at a rate of 8.7% of federal taxable income allocated & apportioned to Delaware, based on an equally weighted three-factor method of appointment. The factors are property, wages and sales in Delaware as a ratio of property, wages and sales everywhere (Chapter 19 Title 30, Delaware Code)

3. Delaware does not have a state or local sales tax; however, there is an annual business license requirement and a gross receipts tax that is imposed on the seller of goods or provider of services. Sales of tangible property are additionally subject to a retail or wholesaler license and gross receipts tax. These taxes are imposed on the seller and remitted monthly or quarterly, depending on the business activity, to the Delaware Division of Revenue (Chapters 21,23,25,27 and 29, Title 30, Delaware Code)

4. For all businesses: Every employer maintaining an office or transacting business in Delaware who makes a payment of wages or other remuneration to a resident or non-resident of this state, must deduct and withhold an amount substantially equivalent to the tax estimated to be due from the employee. Delaware withholding is required, provided such payments are subject to withholding under the Internal Revenue Code (Chapter 11, Title 30, Delaware Code), and is remitted to the Delaware Division of Revenue.



# Upcoming Speaker/Seminar Series



Looking for opportunities to connect with like-minded peers and gain valuable insights that can propel your business forward?

The Delaware Small Business Chamber's [Speaker/Seminar Series](#) is your chance to get involved—either by presenting your own seminar or workshop, or by attending sessions led by experts from a variety of industries.

Share your expertise with fellow members or come learn actionable strategies and fresh perspectives to help your business thrive.

Whether you're a new entrepreneur or a seasoned professional, these sessions offer a unique platform to network, expand your skills, and engage with the topics that matter most in business and beyond.



## Annual Meeting & Blue Ribbon Awards Brunch

The event everyone wants to attend. We honor many small businesses and individuals and offer an amazing brunch. Look at the sponsorship opportunities. Come out and help us celebrate the small business community. Be sure to vote for your favorites in March.



## September 12 FunFest

FunFest is always a public favorite. 2026 will have a lot more added with an expanded Taco Cooking Competition and bringing back the new Zero Proof Fiesta, along with much more for all ages. Check out the website [www.dsbcfunfest.com](http://www.dsbcfunfest.com) later in the year. Reserve your space early for the best prices.



Join us to **connect, learn, and grow!**

Visit our website for more details and to reserve your spot!

[www.DSBCchamber.com](http://www.DSBCchamber.com)





# Chamber by the Numbers



## 2025 events

**15** Special Events



**12** Ribbon Cutting Ceremonies



**17** Networking Events



**9** Seminars



**10** Signature Events



**12** Business 2.0



**36** 6-Top Mingles



**111** Total Events



The Delaware Small Business Chamber has been the leader in events for small business members. Members can attend over 72 events a year for free as part of their membership.

Throughout the year, the Delaware Small Business Chamber holds mixers all over the State of Delaware. there are usually two mixers events a month. One upstate and one in another county. With all of our events. we are in Kent or Sussex Counties at least twice a month on average.

Our 6-Top Mingles are small, intimate members-only networking programs offer members a chance to build relationships with up to 5 other members, all in non-competing industries. The smaller group allows each person a chance to talk and really interact with the other attendees.

Attending one mixer and one 6-Top Mingle a month is part of the guarantee the DSBC offers to our members to get a ROI on their membership investment or get an additional year for free.



# Membership Directory

Alphabetical Listing with primary category with members in good standing as of December 23, 2025

A Stitch In Time	Embroidery	Creative Travel, Inc	Travel
A1 Middletown Tent Service	Rentals	CS Brazilian Steakhouse	Restaurant
ADT Security	Security Systems	Delaware Alliance for Nonprofit Advancement	Non-profit
Affordable Business Systems, Inc.	Copier Sales, Service	Del Pez Mexican Gastropub /Santa Fe	Restaurant
Affordacare Insurance	Health Insurance	Del-One Federal Credit Union	Financial Services
Aging in Place Senior Care Services	Senior Care	Delaware Department Of Labor	Employee and Staffing
Allegiant Fire Protection LLC	Fire Protection Systems	Delaware Hospice	Non-profit
AlphaGraphics of Bear	Signs	Delaware Moving & Storage	Moving Companies
Artisans' Bank	Banking	Delaware Museum of Nature and Science	Non-profit
Aspire Wellness	Health & Wellness	Delmarva Digital	Web Design & Development
Association of the U.S. Army	Non-profit	DETV	Entertainment
Augusta Lawn Care Of Lewes	Lawn Care	Diamond State Financial Group	Financial Services
Axe-Scape the RAGE	Entertainment	Diamond State Meats LLC	Restaurant
Aziza Trading and Halal Wear	Health & Wellness	Dill Dinkers Pickleball Newport	Health & Wellness
The Back Nine Golf	Health & Wellness	Dom Albi Creatives	Promotional Items
Bahama Breeze Island Grille	Restaurant	Dom's NY Style Pizzeria	Restaurant, Pizza
Bartlett Tree Experts	Tree Services	Dominic Hanna Photography	Photography
Beads by Carol	Jewelry	Dons Handyman Services	Home Improvements
Bethany Travel/Dream Vacations	Travel	Dover Federal Credit Union	Credit Union, Banking
Better Business Bureau of Delaware	Business Services	Ducklings Early Learning Center	Daycare
Bevans Home Improvement	Home Improvements	Easterseals DE & MD Eastern Shore, Inc.	Non-profit
BHB Bookkeeping	Bookkeeping	El Shaddai Christian Ministries Inc.	Non-profit
Bing's Bake & Brew	Coffee	Elegantly Set In Stone	Home Improvements
Bing's Bakery	Bakery	Elinor's Maid Cleaning Services	Cleaning Services
Birdie's Links & Drinks	Food & Beverages	Elite Softee Inc.	Food Truck
Blackwell HR	Employee and Staffing	Embodied Counseling and Wellness	Mental Health
Blue Diamond Dental PA	Dentistry	Encompass Health	Health & Wellness
BlueHen BBQ	Catering	Evans-Mayhew Marketing	Marketing
Boulden Brothers	Hvac	Excel Business Technologies	Copier Sales, Service
Breckwoltd and DeCandia CPAs LLC	Accounting	Exploit Strike LLC	Cyber Security
Brew Ha Ha	Coffee	Express Discount Pharmacy	Pharmacy
Broad Reach Communications, LLC	Video Production	FCCB - First Citizens Community Bank	Banking
Built4vision	Web Design And Development	First State Epoxy LLC	Floor Refinishing
Cafeneo	Restaurant	Fish Window Cleaning	Cleaning Services
CAN Web Management	Web Design And Development	Forget Me Not Families	Non-profit
The Candlelight Theatre	Entertainment	Frazzberry Frozen Yogurt	Food & Beverages
Cedar See Vision Center	Medical	Fulton Bank	Banking
CertaPro Painters of Delaware	Home Improvements	Gameday Mens Health- Christiana	Health & Wellness
Chesapeake Inn Restaurant	Restaurant	Get Life Coaching/ Firewalking Institute	Business Coaching
Choice Insurance Agency	Insurance	Gioffre Commercial Realty	Real Estate Commercial
Clearway pain solutions	Health & Wellness	Goodwill of Delaware & Delaware County	Non-profit
Club Pilates Pike Creek	Fitness Center	The Grand Opera House	Entertainment
Coffee Rendezbrew	Coffee	Graze Craze	Food & Beverages
Comparion	Insurance	Greater Wilmington CVB	Tourism
Connor Creative House	Social Media Consulting	The Greene Turtle - Middletown	Restaurant
Convergence Public Affairs	Public Affairs	The Hadley/Laskas Group at Morgan Stanley	Financial Services
Costco Marketing	Retail	The Happy Self-Publisher	Publisher
County Bank	Banking	Harmony at Hockessin	Senior Care
The County Women's Journal NCC & Kent	Advertising	Harrington Senior Center, Inc.	Non-profit
Courtyard Newark-University of Delaware	Hotels		

Hawkins and Sons Appliances	Appliances	Peak Performance Automotive	Auto Repair
Heaven & Health, LLC	Health & Wellness	Perkins Family Restaurant	Restaurant
Himalayan Salt of the Earth Cave	Health & Wellness	PetVet 365 North Wilmington	Pets
Holly & Morton, LP	Law	PRIMECARE Comprehensive Health, LLC	Medical
HOME- Helping One More Entrepreneur	Business Services	The Produce Peddler	Food & Beverages
Hopkins and Sons, Inc. - Atlas Van Line	Moving Companies	Prosperity Accounting Solutions, LLC	Accounting
Hyatt Place Wilmington Riverfront	Hotels	Pursers Office Inc	Payroll
Iconic Roofing and Exteriors, Inc.	Roofing	Putter's Paradise	Entertainment
IMD4	Marketing	Ramone Family Business	Entertainment
In A Heartbeat, LLC	Training And Coaching	RAPA Scrapple - Ralph and Paul Adams,	Food & Beverages
In Jest Events	Catering	Real Life Prosthetics	Medical
Insperty	Business Services	Redfin	Real Estate
Integrated Financial Insights LLC	Business Consulting	reNu Medical & Injury Center	Health & Wellness
Jan-Pro Franchise Development of NCC	Cleaning Services	The Ruckle Team, Inc	Real Estate Residential
JD&J Natural Skin Care	Beauty Care	Sacksy Thyme	Retail
Jersey Mike's	Food & Beverages	Saramaya LLC d/b/a Medi Weightloss	Health & Wellness
JuicePlus+/Tower Garden Marilyn Del Duca	Health & Wellness	Savora Catering & Events	Catering
Juniper village at Newark	Senior Care	SC Associates	Accounting
Karen Burke/Patterson-Schwartz RE	Real Estate Residential	Schaefer's Canal House	Restaurant
Keep It Spinnin Entertainment	Wedding Services	SCORE Delaware	Business Services
Keller Williams Realty - Will Webber	Real Estate Residential	SDS, Inc	It Technology
King Print & Promo	Promotional Items	Serenity Writing Works	Health & Wellness
Kirk's Flowers	Florist	SheNaj Creations Llc	Advertising
Kirkwood Auto & Tire Center	Auto Repair	Sightline Events	Event Entertainment
Kreston's Wine & Spirits	Food & Beverages	Skycast Community Marketing	Advertising
KRM Development Corporation	Real Estate Commercial	Small Business Development Center	Business Coaching
Launcher Entrepreneurship Program	Business Development	Sparano, Vincelette & Joiner, CPAs	Accounting
Legal Shield- Chennita Crawford	Identity Theft Protection	SpinLife	Senior Care
Lifestyle Document Management	Document Storage and Shredding	Steak & Main	Restaurant
Liquid Alchemy Beverages	Food & Beverages	Strano & Feeley Family Funeral Home	Funeral Home
Little Landmines Pet Waste Removal	Pets	Sunday Breakfast Mission	Non-profit
Lori's Hands	Non-profit	Takedown Pest Control	Pest Control
Lost Money Detectives LLC	Business Consulting	TeamLogic IT	It Technology
Luxe Hydration and Wellness	Health & Wellness	Terrie M Williams Expansion, Inc.	Non-profit
M. O. T. Senior Center	Senior Care	Texas Roadhouse - Bear	Restaurant
Magic Car Wash, Inc.	Car Wash	Timothy's Of Newark	Restaurant
Marriott Newark & New Castle - Titan Hospitality Group	Hotels	Travel Queen Adventures	Travel
Meadowcrest at Middletown	Senior Care	True Access Capital	Non-profit
Mercantile Processing Inc.	Merchant Services	U.S. Small Business Administration	Business Services
Miller Dunham House Bed and Breakfast	Hotels	Ugly Dumpling	Restaurant
Moon Services	Hvac	Union Press Printing	Printing
Moore Sealcoat & Striping	Asphalt Maintenance	University of Delaware English Lang. Inst.	Education
Newark Arts Alliance	Art	Verdant Plant Health Care	Landscaping
The Newark Partnership	Non-profit	Virtual B2B Staffing and Consulting	Business Services
Nifty Fifty's	Restaurant	Visiting Angels Dover	Home Care
Ole Tapas Lounge	Catering	Waggies by Maggie & Friends	Pets
Party Princess Productions Wilmington	Entertainment	Waste Masters Solutions	Trash Removal/dumpster
PAWS For People	Non-profit	The Waterfall Banquet	Banquet Facilities
Payroll Management Assistance	Payroll	White Clay Creek Country Club	Wedding Services
Pea and the Pod Chiropractic	Chiropractor	White Lily Consignment	Retail
Peach Blossom Direct Primary Care	Health & Wellness	Wilderman Physical Therapy	Health & Wellness



# Membership Directory

**Primary Category Listings (see Alphabetical listings from primary listings.)**

**Members in good standing as of Dec 23, 2025**

## **ACCOUNTING**

### **BHB Bookkeeping**

Bethany Bell  
Dover, DE  
302-232-5389  
BHBBBookkeeping.com

### **Breckwoldt and DeCandia CPAs LLC**

Mark Breckwoldt  
Greenwood, DE  
302-480-2349  
brecandia.com

### **Integrated**

#### **Financial Insights**

Stephen Barczykowski  
Newark, DE  
302-299-6339  
www.ifi-llc.com

### **Prosperity Accounting**

#### **Solutions, LLC**

Dilyara Starr  
21 Dasher Ave  
Bear, DE 19701-1176  
302-359-2838  
ProsperityAccountin  
gSolutionsLLC.com

### **SC Associates**

Sharron Crillo  
651 N. Broad Street  
Suite 103  
Middletown, DE 19709  
302-454-1100  
www.scassoc.net

### **Sparano, Vincelette & Joiner, CPAs**

Evelyn Joiner  
1814 Newport Gap Pk  
Wilmington, DE 19808  
302-999-7300  
www.svvcpa.com

## **ADVERTISING**

### **The County Women's Journal**

Pamela Rizzo  
P.O. Box 57  
Lewes, DE 19958  
302-236-1435  
thewomensjournal.com

### **SheNaj Creations**

Darlene Green  
Newark, DE  
302-561-2958  
www.facebook.com/p  
eople/Shenaj-  
Creations-  
LLC/100063818573282

## **APPLIANCES**

### **Hawkins and Sons Appliances**

Karen Hawkins  
400 New Road  
Elsmere, DE 19805  
302-998-1010  
hawkinsandsons.com

## **ART**

### **Newark Arts Alliance**

Pamela Draper  
276 E. Main Street  
Suite 102  
Newark, DE 19711  
302-266-7266  
newarkartsalliance.org

## **ASPHALT MAINTENANCE**

### **Moore Sealcoat & Striping**

David Lewis  
204 Morris Rd  
Townsend, DE 19734  
302-653-1571  
mooreseal.com

## **AUTO REPAIR**

### **Kirkwood Auto Ctr**

Brian Jones  
4913 Kirkwood Hwy  
Wilmington, DE 19808  
302-995-6179  
kirkwoodautocenter.com

### **Peak Performance**

Ricardo Fullwood  
663 Dawson Dr.  
Newark, DE 19713  
302-731-8822  
peakautorepairs.com

## **BAKERY**

### **Bing's Bakery**

Carla Guzzi  
253 E. Main Street  
Newark, DE 19711  
302-737-5310  
bingsbakery.com

## **BANKING**

### **Artisans' Bank**

Nicole Monroe Cole  
2961 Centerville Rd  
Wilmington, DE 19808  
302-658-6881  
artisansbank.com

### **County Bank**

Molly Barbour  
19927 Shuttle Road  
Rehoboth Beach, DE 19971  
302-226-9800  
countybankdel.com

### **FCCB**

Christine Menser  
4900 Kirkwood Hwy  
Wilmington, DE 19808  
302-250-4028  
www.myfccb.com

## **Fulton Bank**

Chris Graham  
287 E Main St  
Newark, DE 19711  
302-737-7766  
fultonbank.com

## **WSFS Bank**

Tracy Feinsilver  
4601 Kirkwood Hwy  
Wilmington, DE 19808  
302-283-4560  
www.wsfsbank.com

## **BANQUET FACILITY**

### **The Waterfall Banquet**

Kimberly Nolan  
3416 Philadelphia Pk  
Claymont, DE 19703  
302-792-2600  
waterfallbanquets.com

## **BEAUTY CARE**

### **JD&J Natural Skin Care**

Jacinta Maguta  
Bear, DE 19701  
302-463-2064  
www.facebook.com/profile.ph  
p?id=61576353226971

## **BUSINESS COACHING**

### **Get Life Coaching/ Firewalking Institute**

Joe White  
2417 Silverside Rd  
Wilmington, DE 19810  
302-353-1444  
getlifecoaching.com

### **Small Business Development Cntr**

1 Innovation Way  
Newark, DE 19711  
302-831-4283  
delawaresbdc.org

## **BUSINESS CONSULTING**

### **Integrated Financial Insights**

Stephen Barczykowski  
Newark, DE  
302-299-6339  
www.ifi-llc.com

### **Lost Money Detectives LLC**

Mark Gannon  
2093 Philadelphia Pk  
Claymont, DE 19703  
302-246-7059  
lostmoneydetectives.com

## **BUSINESS DEVELOPMENT Launcher Entrepreneurship Program**

Emily Duran  
710 N Lincoln St  
Wilmington, DE 19805  
302-658-4171  
LauncherDE.org

## **BUSINESS SERVICES**

### **Better Business Bureau of DE**

60 Reads Way  
New Castle, DE 19720  
302-221-5259x121  
bbb.org/local-bbb/bbb-  
serving-delaware

### **HOME- Helping One More Entrepreneur**

Joseph Richichi  
108 Patriot De St A  
Middletown, DE 19709  
302-274-8060  
thehomellc.com

### **Insperty**

Bill Polin  
1201 North Market St  
Suite 1402  
Wilmington, DE 19801  
302-545-6373  
insperty.com

## **SCORE Delaware**

W. Eric Roberson  
1105 Market Street  
Wilmington, DE 19801  
302-661-2366  
delaware.score.org

### **U.S. Small Business Administration**

Ellyn Herbert  
1105 N. Market St  
Wilmington, DE 19801  
302-333-4119  
sba.gov/about-offices-  
content/2/3107

### **Virtual B2B Staffing and Consulting**

Luvy Stewart  
Wilmington, DE 19803  
302-217-6667  
virtualb2bstaffing

## **CAR WASH**

### **Magic Car Wash**

Ginger Emerson  
4917 Kirkwood Hwy  
Wilmington, DE 19810  
302-750-2197  
magiccarwashinc.com

## **CATERING**

### **BlueHen BBQ**

Norman Washington  
Newark, DE 19711  
302-650-0837  
Blue-henbbq.com

### **In Jest Events**

Robbie Jester  
Wilmington, DE 19808  
302-562-2406  
robbiejester.com

### **Ole Tapas Lounge**

Manuel Aguinaga  
1126 Capitol Trail  
Newark, DE 19711  
302-224-9378  
oletapaslounge.com

## **Savora Catering**

Andrea Comegys  
Newark, DE  
302-740-3244  
savoracatering.com

## **CHIROPRACTOR**

### **Pea and the Pod Chiropractic**

Brenda Fairchild  
500 Christiana  
Medical Center  
Newark, DE 19702  
302-455-7327  
peapodchiro.com

## **CLEANING SERVICES**

### **E.C.H.O. Services**

James Williams  
302-419-0555

### **Elinor's Maid Cleaning Services**

Elinor Borges  
Newark, DE 19702  
302-416-0699

### **Fish Window Cleaning**

Dylan Hannum  
1408 B. North Dupont Hwy  
New Castle, DE 19720  
302-325-3474  
fishwindowcleaning  
.com/3215

### **Jan-Pro Franchise Development of New Castle**

Khristian Toolan  
2417 Lancaster Ave  
Wilmington, DE 19805  
302-722-8688  
jan-pro.com/newcastle

## **COFFEE**

### **Bing's Bake & Brew**

Vincent Guzzi  
57 South Main St  
Suite 101  
Newark, DE 19711  
302-751-3177  
bingsbakeandbrew.com

## **Brew Ha Ha**

Alisa Morkides  
3838 Kennett Pike  
Wilmington, DE 19807  
302-427-2739x102  
brew-haha.com

### **Coffee Rendezbrew**

Wanda Guyton  
Rehoboth Beach,  
DE 19971  
302-307-6611  
coffeerendezbrew.com

## **COPIER SALES, SERVICE AND SUPPLIES**

### **Affordable**

### **Business Systems**

Dean Woroniecki  
8662 Ocean Hwy  
Delmar, MD 21875  
410-742-2234  
affordablebusiness  
systems.com

### **Excel Business Technologies**

Dee Cairo  
201 Ruthar Drive  
Newark, DE 19713  
302-453-1500  
exceldigital.com

## **CREDIT UNION, BANKING**

### **Dover Federal Credit Union**

Susan Yocum  
1075 Silver Lake Bld  
Dover, DE 19904  
302-678-8000x3089  
www.doverfcu.com

## **CYBER SECURITY Exploit Strike LLC**

Charles Adams  
Newark, DE  
443-553-3009  
exploitstrike.com



## **DAYCARE**

### **Ducklings Early Learning Center**

Tianni Liang  
230 Innovation Dr  
Wilmington, DE 19805  
302-443-0123  
ducklingselec.com/locations/chestnutrun/

## **DENTISTRY**

### **Blue Diamond Dental PA**

Melanie Daniels  
2300 Pennsylvania Ave  
Wilmington, DE 19806  
302-655-8387  
bluediamonddental.com

### **Eckley Family and Cosmetic Dentistry**

Ryan Eckley  
5341 Limestone Rd Ste 101  
Wilmington, DE 19808  
302-265-3653  
eckleyfamilydentistry.com

## **DOCUMENT STORAGE & SHREDDING**

### **Lifestyle Document Management**

Anna Morgan  
22277 Lewes - Georgetown Hwy  
Georgetown, DE 19947  
302-841-3782  
lifestyledocumentmanagement.com

## **EDUCATION**

### **University of Delaware, English Language Institute**

Cheryl Ernst  
189 W. Main Street  
Newark, DE 19716  
302-831-2674  
www.udel.edu/academics/colleges/cas/units/eli/

## **Wilmington University**

Melissa Palese  
320 N. DuPont Hwy  
New Castle, DE 19720  
302-327-4797  
www.wilmu.edu

## **EMBROIDERY**

### **A Stitch In Time**

Connie McGrory  
101 Harrison Ave  
New Castle, DE 19720  
302-395-1306  
customstitch.com

## **EMPLOYEE AND STAFFING**

### **Blackwell HR**

Michelle Ray  
2506 Eaton Road  
Wilmington, DE 19810  
302-524-4244  
www.blackwellhr.com/about-us

### **DE Dept. Of Labor**

Rachel Turney  
655 Bay Road  
Dover, DE 19901  
302-761-8131  
labor.delaware.gov

## **ENTERTAINMENT**

### **Axe-Scape the RAGE**

Amanda Melisi  
1688 South Governors Ave  
Dover, DE 19904  
302-484-3244  
axescapetherage.com

### **The Candlelight Theatre**

Sue Hornung  
2208 Millers Road  
Wilmington, DE 19810  
302-475-2313  
www.candlelighttheatre.delaware.com

## **DETV**

Ivan Thomas  
1105 N. Market St  
Wilmington, DE  
302-658-1555  
www.detvch.com

## **The Grand Opera House**

Kate Baker Frawley  
818 N Market Street  
Wilmington, DE 19801  
302-658-7897  
www.thegrandwilmington.org

## **Party Princess Productions Wilm**

Pam Cichocki  
Middletown, DE  
302-379-1619  
wilmington.partyprincessproductions.com

## **Putter's Paradise**

Mark Hall  
130 Commerce Dr  
Middletown, DE 19709  
302-449-0320  
puttersparadisede.com

## **Ramone Family Business**

CJ Ramone  
4905 Mermaid Blvd  
Wilmington, DE 19808  
302-268-8023  
ramoneslandscaping.com

## **EVENT**

### **ENTERTAINMENT Sightline Events**

Steven Lewis  
Newark, DE 19711  
302-256-8277  
sightlineevents.com

## **FINANCIAL SRCS**

### **Del-One Federal Credit Union**

Amy Resh  
270 Beiser Blvd  
Dover, DE 19904  
302-739-4496  
www.del-one.org

### **Diamond State Financial Group**

Neil Stalter, CFP®, ChFC®, CBEC®  
900 Prides Crossing  
Newark, DE 19713  
302-545-6225  
www.dsfg.com

## **FLOOR REFINISHING**

### **First State Epoxy**

Cody Aro  
600 paprika  
Middletown, DE 19709  
302-213-4703  
firststateepoxy.com

## **FLORIST**

### **Kirk's Flowers**

John Mayer  
226 Suburban Drive  
Newark, DE 19711  
302-737-8072  
.kirksflowers.com

## **FOOD & BEVERAGES**

### **Birdie's Links & Drinks**

Dylan Hannum  
320 Auto Park Drive  
Middletown, DE 19709  
302-520-4653  
birdieslinks.com

### **Frazzberry Frozen Yogurt**

Charles Frasso  
4734 Limestone Rd  
Wilmington, DE 19808  
302-543-7791  
www.frazzberry.com

**Graze Craze**

Darlene Sullivan  
683 Yorklyn Rd #3  
Hockessin, DE 19707  
302-235-8250  
www.grazecraze.com/hockessin-de

**Jersey Mike's**

John De Viere  
Dover, DE 19943  
302-368-7600

**Kreston's Wine & Spirits**

Bob Kreston  
904 Concord Ave  
Wilmington, DE 19802  
302-652-3792  
krestonwines.com

**Liquid Alchemy Beverages**

Terri Sorantino  
28 Brookside Drive  
Wilmington, DE 19804  
302-438-0252  
www.liquidalchemybeverages.com

**The Produce Peddler**

John Detwiler  
1009 Nottingham Rd  
Newark, DE 19711  
302-540-0912  
theproducepeddler.com

**RAPA Scrapple - Ralph and Paul Adams, Inc**

John Curtis  
103 Railroad Ave  
Bridgeville, DE 19933  
800-338-4727  
rapascrapple.com

**Woodside Farm Creamery**

Janet Mitchell  
378 North Star Road  
Newark, DE 19711  
302-239-9847  
WoodsideFarmCreamery.com

**FOOD TRUCK****Elite Softee Inc.**

Steve King  
5700 Kirkwood Hwy  
Wilmington, DE 19808  
302-530-6739

**FUNERAL HOME****Strano & Feeley Family Funeral Home**

Karen Feeley  
635 Churchmans Rd  
Newark, DE 19702  
302-731-5459  
stranofeeley.com

**HEALTH & WELLNESS****Aspire Wellness**

Cheryl McClea  
1220 Capitol Trail  
Newark, DE 19711  
302-366-1727  
aspirewellnessnow.com

**Aziza Trading and Halal Wear**

Ida Mariani  
Smyrna, DE  
302-471-7989  
azizatradings.com

**The Back Nine Golf**

Phil Stoops  
1812 Marsh Rd #503  
Wilmington, DE 19810  
302-281-4653  
thebackninegolf.com/wilmingtonde/

**Clearway pain solutions**

Jennifer Eskridge  
655 S Bay Rd  
Dover, DE 19901  
302-260-0278  
clearwaypain.com

**Dill Dinkers****Pickleball Newport**

Jim Cassady  
500 Waters Street  
Newport, DE  
302-591-3465  
dilldinkers.com

**Encompass Health Rehabilitation**

**Hospital of Middletown**  
Christie Watlington  
250 E. Hampden Rd  
Middletown, DE 19709  
302-464-3400  
www.encompasshealth/middletown

**Gameday Men's Health- Christiana**

Kimberly Gross  
110 Christiana Medical Center  
Newark, DE 19702  
302-455-2777  
gamedaymenshealth.com/christiana-de/

**Heaven & Health,**

Naomi Hoffman, LMT  
270 Presidential Dr  
Wilmington, DE 19807  
302-999-9565  
heavenhealthllc.com

**Himalayan Salt of the Earth Cave**

Charles Ringgold  
10 W. Main Street  
Middletown, DE 19709  
302-272-5410  
himalayansaltoftheearthcave.com

**JuicePlus+/Tower Garden**

Marilyn Del Duca  
Historic New Castle,  
302-322-2616  
marilyn.juiceplus.com

**Luxe Hydration and Wellness**

Gina Washam  
412 west 4th street  
Wilmington, DE 19801  
302-588-0017  
luxehydrationandwellnessbygina.net

**Peach Blossom Direct Primary Care**

Rabia Qureshi  
21 Becks Woods Dr  
STE 203  
Newark, DE 19701  
302-618-4075  
peachblossomhealth.com

**reNu Medical & Injury Center**

Doris Leach  
1352 Marrows Rd  
Suite 202  
Newark, DE 19711  
302-368-0124  
renumedicalinjury.com

**Saramaya LLC****d/b/a Medi Weightloss**

Rajesh Shinde  
4229 Concord Pike  
Wilmington, DE 9803  
267-243-8727  
mediweightloss.com/weight-loss-clinic/wilmington-talleyville/

**Serenity Writing Works**

Alisa Schneidman  
1127 Valley Rd # 2  
Hockessin, DE 19707  
302-740-1364  
www.serenitywritingworks.com

**Wilderman Physical Therapy**

David Wilderman  
4905 Mermaid Blvd  
Wilmington, DE 19808  
302-691-9055  
wildermanphysicaltherapy.com



## **HEALTH INSURANCE**

### **Affordacare Insurance**

Howard Polansky  
512-608-1020  
torch.champplan.com  
/info/DSBChamber

## **HOME CARE Visiting Angels Dover**

Thomas Smith  
1050 Industrial Dr.  
Middletown, DE 19709  
302-751-3324  
visitingangels.com/dover

## **HOME IMPROVEMENTS**

### **Bevans Home Improvement**

Celeste Bevans  
Middletown, DE 19709  
267-231-5918  
contractTony.com

### **CertaPro Painters of Delaware**

Denise Garvey  
405 Old DuPont Rd.  
Wilmington, DE 19804  
302-379-3616  
certapro.com/delaware

### **Dons Handyman srvs**

Donald Albert  
Newark, DE  
302-482-5065  
Handyman302.com

### **Elegantly Set In Stone**

Susanne Howarth  
400 Marsh Road  
Wilmington, DE 19809  
302-543-6739  
www.elegantlysetin  
stone.com

## **HOME-BASED**

### **Steff DiMartine**

Steff DiMartine  
New Castle, DE 19720  
302-750-0159

## **HOTELS**

### **Courtyard Newark- University of DE**

400 David Hollowell Dr  
Newark, DE 19716  
302-737-0900  
www.marriott.com/hot  
els/travel/ilgud-  
courtyard-newark-  
university-of-delaware/

### **Hyatt Place Wilmington Riverfront & Riverfront Events**

Abigail Lewes  
760 S. Justison St  
Wilmington, DE 19801  
302-803-5888  
www.hyatt.com/hya  
tt-place/en-  
US/phlzw-hyatt-  
place-wilmington

### **Marriott Newark & New Castle - Titan Hospitality Group**

Chrissie Bainbridge  
999 Delaware Park Blvd  
Newark, DE 19713  
302-421-9200  
www.marriott.com/  
en-us/hotels/ilgnr-  
residence-inn-  
newark-  
de/overview/?scid=  
f2ae0541-1279-4f24-  
b197-a979c79310b0

### **Miller Dunham**

**House Bed & Breakfast**  
TJ Lamperz  
207 High St, #672  
Odessa, DE 19730  
302-378-0459  
Miller-dunham.com

## **HVAC**

### **Boulden Brothers**

Tim Boulden  
107 Sandy Dr. #700  
Newark, DE 19713  
302-368-0100  
bouldenbrothers.com

### **Moon Services**

Steve Moon  
1638 Elkton Rd  
Elkton, MD 21921  
410-392-9350  
www.moonairinc.com

## **IDENTITY THEFT PROTECTION**

### **Legal Shield- Chennita Crawford**

Middletown, DE 19709  
302-388-1528  
www.cccrawford.we  
arelegalshield.com

## **INSURANCE**

### **Choice Insurance Agency**

Melissa Woolman  
1906 Newport Gap Pk  
Wilmington, DE 19808  
302-998-1412  
choiceins.com

### **Comparion**

Mike Devivo  
131 Continental Dr  
Suite 108  
Newark, DE 19713  
302-444-9126  
www.comparionins  
urance.com/.../new  
ark.../mike-devivo

## **IT TECHNOLOGY**

### **SDS, Inc**

Don Newcomb  
800 Pencader Drive  
Newark, DE 19702  
302-275-6935  
sdsnthweb.com

## **TeamLogic IT**

Charles Weyhmiller  
5584 Kirkwood Hwy  
Wilmington, DE 19808  
302-446-4100  
teamlogicit.com/wi  
lmingtonde803

## **JEWELRY**

### **Beads by Carol**

Carol Mack  
Bear, DE 19701  
302-593-6982  
beadsbycarol.com

## **LANDSCAPING**

### **Verdant Plant Health Care**

Dorothy Leventry  
PO Box 158  
Montchanin, DE 19710  
302-358-2477  
verdantplanthealth.com

## **LAW**

### **Holly & Morton, LP**

Martha Sargeni  
603 Main St.  
Odessa, DE 19730  
302-376-5850  
lacyhollylp.com

## **LAWN CARE**

### **Augusta Lawn Care Of Lewes**

Sondra Kuhns  
Millsboro, DE  
302-316-0025  
augustalawncareser  
vices.com/lewes

## **MARKETING**

### **Evans-Mayhew Marketing**

Lindsey Evans-  
Mayhew  
112 French St  
Wilmington, DE 19801  
302-307-2772  
evansmayhew.com

**IMD4**

Jim Suhre  
P.O. Box 400  
Cheswold, DE 19936  
917-744-5762  
imd4.com

**MEDICAL**

**Cedar See Vision Ctr**  
Withney Korley  
5435 Peterson Rd  
Middletown, DE 19709  
302-609-0041  
cedarseevisioncenter.com

**PRIMECARE  
Comprehensive  
Health, LLC**

Ada Lee  
2600 Glasgow Ave  
STE 203  
Newark, DE 19702  
302-204-1639  
primecarehealthcare.com

**Real Life  
Prosthetics**

Sandy Yeater  
100 Biddle Avenue  
Newark, DE 19702  
410-569-0606  
reallifeprosthesis.com

**MENTAL HEALTH  
Embodied  
Counseling &  
Wellness**

Casey Obstfeld  
900 Philadelphia Pk  
Wilmington, DE 19809  
302-797-1233  
embodiedcw.com

**MERCHANT  
SERVICES**

**Mercantile  
Processing Inc.**  
Casey Fitzgerald  
20167 Office Circle  
Georgetown, DE 19947  
302-524-8000x103  
mpiprocessing.com

**MOVING  
COMPANIES  
Delaware Moving &  
Storage**

Ed Kulesza  
214 Bear-Christiana  
Bear, DE 19701  
302-322-0311x102  
www.delawaremovi  
ngandstorage.com

**Hopkins and Sons,  
Inc. - Atlas Van Line**  
Kirsten Pitrizzi  
1 Bellecor Drive  
New Castle, DE 19720  
302-276-7464  
hopkinsandsons.com

**NON-PROFIT  
Association of the  
U.S. Army**

Gary Dawson  
Middletown, DE  
302-230-6074  
ausa.org/chapters/  
delaware-chapter

**DANA-Delaware  
Alliance for Nonprofit  
Advancement**  
Sheila Bravo  
100 West 10th St  
Wilmington, DE 19801  
302-777-5500  
delawarenonprofit.org

**Delaware Hospice**  
Kathleen Wood  
630 Churchmans Rd  
Suite 200  
Newark, DE 19702  
302-545-5103  
delawarehospice.org

**Delaware Museum  
of Nature & Science**  
Mandy Santiago  
4840 Kennett Pike  
Wilmington, DE 19807  
302-658-9111  
delmns.org

**Easterseals  
Delaware &  
Maryland's Eastern  
Shore, Inc.**

Kelly Doty  
61 Corporate Circle  
New Castle, DE 19720  
302-221-2053  
de.easterseals.com

**El Shaddai  
Christian Ministries**

Pastor Glenn Ahrens  
311 Joan Drive  
Bear, US- 19701  
302-761-3286  
elshaddaichristian.com

**Forget Me Not  
Families**

Shanta Lallind  
132 Sandy Dr St B  
Newark, DE 19713  
302-416-2897  
forgetmenotfamiliesd  
e.com

**Goodwill of  
Delaware and  
Delaware County**  
Colleen Morrone  
300 E Lea Blvd  
Wilmington, DE 19802  
866-317-2299  
goodwillde.org

**Harrington Senior  
Center, Inc.**

Karen Crouse  
102 Fleming Street  
Harrington, DE 19952  
302-398-4224  
harringtonseniorce  
nter.org/

**Lori's Hands**  
Sachi Menard  
100 Discovery Blvd  
Newark, DE 19713  
302-440-5454  
www.lorishands.org

**The Newark  
Partnership**  
Ali DeAngelis  
PO Box 829  
Newark, DE 19715

**PAWS For People**  
Clarice Ritchie  
703 Dawson Drive  
Newark, DE 19713  
302-351-5622  
PAWSforPeople.org

**Sunday Breakfast  
Mission**

Bruce Davison  
110 N Poplar St.  
Wilmington, DE 19801  
302-652-8314  
www.sundaybreakf  
astmission.org

**Terrie M Williams  
Expansion, Inc.**  
Terrie Williams  
301 Ruthar Drive  
Newark, DE 19711  
302-551-3600  
www.terriemwilliam  
sexpansion.org

**True Access Capital**  
Luz Sellers  
100 W. 10th St. #300  
Wilmington, DE 19801  
302-652-6774  
trueaccesscapital.org

**World Trade Center  
Delaware**  
Mary Swenson  
42 Reads Way Ste B  
New Castle, DE 19720  
302-656-7905  
www.wtcde.org



## **PAYROLL**

### **Payroll Management Assistance**

James Paoli  
409B White Clay Ctr  
Newark, DE 19711  
302-456-6816  
pmapayroll.com

### **Pursers Office Inc**

Rollyn Trueblood  
108 Patriot Drive  
Middletown, DE 19709  
302-239-9788  
pursersoffice.com

## **PETS**

### **Little Landmines**

#### **Pet Waste Removal**

Jennifer Sparks  
Middletown, DE 19709  
866-302-7667  
littlelandmines.com

### **PetVet 365 North Wilmington**

Tarron Herring  
3569A Silverside Rd  
Wilmington, DE 19810  
302-485-0405  
petvet365.com/locations/north-wilmington

### **Waggies by Maggie & Friends**

Ann Grunert  
1310 Carruther  
Wilmington, DE 19803  
302-740-1051  
www.Waggies.org

## **PHARMACY**

### **Express Discount Pharmacy**

Pavithran Gujja  
4528 Kirkwood Hwy  
Wilmington, DE 19808  
302-575-9891  
www.expressdiscountpharmacy.com

## **PHOTOGRAPHY**

### **Dominic Hanna Photography**

Dominic Hanna  
4142 Ogletown-  
Stanton Rd #118  
Newark, DE 19713  
302-722-6795  
dominichanna.com

## **PRINTING**

### **Minuteman Press Wilmington Dnwn**

Mohammad Bangash  
1723 W. 8th Street  
Wilmington, DE 19805  
302-652-0496  
de201.minuteman.com

## **PROMOTIONAL ITEMS**

### **Dom Albi Creatives**

Dom Albi  
Middletown, DE 19709  
201-394-8827  
www.hotgraphicpromos.com

### **King Print & Promo**

Paul Keely  
79 Hidden Valley Dr  
Newark, DE 19711  
302-292-0962  
kingdoesmore.com

## **PUBLIC AFFAIRS**

### **Convergence Public Affairs**

Ken Grant  
1007 Orange St #400  
Wilmington, DE 19801  
302-588-4151  
www.convergencepubaffairs.com

## **PUBLISHER**

### **The Happy Self-Publisher**

Lois Hoffman  
Newark, DE  
302-419-7289  
happyselfpublisher.com

## **REAL ESTATE**

### **Redfin**

Sherri Hill  
993 Old Eagle  
School Rd. Suite 417  
Wayne, PA 19087  
302-312-1730  
redfin.com/real-estate-agents/sherri-hill

## **REAL ESTATE COMMERCIAL**

### **Gioffre Commercial Realty**

Pat Gioffre  
PO Box 5280  
Wilmington, DE 19808  
302-223-5225  
www.gioffrecommercialrealty.com

### **KRM Development Corporation**

Marley Gladden  
205 Cannon Street  
Chestertown, MD  
410-810-1574  
www.krm-dev.com

## **REAL ESTATE RESIDENTIAL**

### **Karen Burke Patterson-Schwartz Real Estate**

Karen Burke  
7234 Lancaster Pike  
Hockessin, DE 19707  
302-540-4071  
karenjburke.com

### **Keller Williams Realty - Will Webber**

1318 Barksdale Rd  
Newark, DE 19711  
302-368-5400

### **The Ruckle Team**

Todd Ruckle  
56 W. Main Street  
Newark, DE 19702  
302-355-1876  
theruckleteam.com

## **RENTALS**

### **A1 Middletown Tent Service**

Jim Thorton  
1710 Red Lion Rd  
Bear, DE 19701  
302-437-5911  
www.a1middletowntentsevents.com

## **RESTAURANT**

### **Bahama Breeze Island Grille**

Michael Links  
500 Center Blvd.  
Newark, DE 19702  
302-266-7923  
www.bahamabreeze.com/home

### **Cafeneo**

Antonios Fessaras  
139 S Main Street  
Newark, DE  
302-364-3451  
cafeneobakery.com

### **Chesapeake Inn Restaurant**

Eddie Greer  
605 2nd Street  
Chesapeake City,  
MD 21915  
410-885-2040  
chesapeakeinn.com

### **CS Brazilian Steakhouse**

Pamela Piraino  
600 Center Blvd S  
Newark, DE 19702  
302-355-5551  
eatsteaks.com

### **Del Pez Mexican Gastropub /Santa Fe Mexican Grill**

Andrea Comegys  
501 Grove Ln  
Newark, DE 19711  
302-740-3244  
delpezmexicanpub.com

**Diamond State Meats LLC**

William Savage  
37369 Martin Street  
Rehoboth Beach, DE  
302-270-0009  
www.diamondstate  
meats.com

**The Greene Turtle**

302-454-1592  
thegreenturtle.com/  
location/newark-de

**Nifty Fifty's**

Josue Vallon  
1365 Marrows Road  
Newark, DE 19711  
302-437-4076  
niftyfiftys.com/loca  
tion/newarkde/

**Off the Hook Restaurant Group**

Bethany & Oceanview  
302-616-1031  
tasteeventsandcatering  
.com

**Perkins Restaurant**

David George  
Possum Park Mall  
Newark, DE 19711  
302-737-3500  
eatatperkins.com

**Schaefer's**

Angie Rutherford  
208 Bank Street  
Chesapeake City,  
MD 21915  
410-885-7200  
www.schaefer'scanalhouse.com

**Steak & Main**

Anthony Covatta  
107 South Main St  
North East, MD 21901  
410-287-3512  
steakandmain.com

**Texas Roadhouse - Bear**

Kineta Russo  
250 Buckley Blvd  
Bear, DE 19701  
302-322-3443  
texasroadhouse.com  
/locations/90-  
bearde

**Timothy's Of Newark**

Karen Steele  
100 Creek View Rd  
Newark, DE 19711  
302-738-9915  
timothysofnewark.com

**Ugly Dumpling**

Maggie Monahan Farrell  
140 East Main St  
Newark, DE 19711  
212-444-8443  
uglydumpling.us

**RESTAURANT, PIZZA****Dom's NY Style Pizzeria**

Dominick Filingeri  
218 W. Market St  
Newport, DE 19804  
302-998-7154  
ilovedomspizza.com

**RETAIL****Costco Marketing**

Cheryl Strootman  
900 Center Blvd.  
Newark, DE 19702  
302-444-9312  
www.costco.com

**Sacksy Thyme**

Susie Conley  
303 Ruthar Drive  
Newark, DE 19711  
302-420-9040  
sacksythyme.com

**White Lily Consignment**

Ashley Levan  
103 Patriot Dr #101  
Middletown, DE 19709  
302-685-1516  
[www.whitelilyconsi  
gnment.com](http://www.whitelilyconsignment.com)

**ROOFING****Iconic Roofing and Exteriors, Inc.**

Matthew Elisan  
13 King Ct Ste 3  
New Castle, DE 19720  
302-305-3258  
iconicroofers.com

**SECURITY SYST****ADT Security**

Barbara Florentine  
140 Quigley Blvd  
Newark, DE 19711  
732-778-5303  
<https://ADT.com>

**SENIOR CARE****Aging in Place****Senior Care Svcs**

Kristin Stetler  
5586 Kirkwood Hwy  
Wilmington, DE 19808  
302-722-8240  
aginginplacescs.com

**Harmony at Hockessin**

Frank DeMarinis  
621 McGovern Road  
Hockessin, DE 19707  
302-496-2792  
harmonyseniorservic  
es.com/senior-  
living/de/hockessin/  
mcgovern-rd

**Juniper Village at Newark**

Aking DeLeon  
924 Barksdale Road  
Newark, DE 19711  
302-455-7979  
[leisurecare.com/our-  
communities/vero-  
newark](http://leisurecare.com/our-communities/vero-newark)

**M. O. T. Senior Ctr**

Cecillia DeFazio  
300 S Scott St.  
Middletown, DE 19709  
302-378-4758  
motseniorcenter.com

**Meadowcrest at Middletown**

Quinna Staten  
820 Middletown  
Odessa Rd  
Middletown, DE 19709  
302-828-0987  
meadowcrestlife.com

**SpinLife**

Terry Banning  
773 S. Dupont Hwy  
NewCastle, DE 19720  
302-836-4110m  
[www.spinlife.com](http://www.spinlife.com)

**SIGNS****AlphaGraphics Bear**

UV Shah  
140 Fox Hunt Dr  
Bear, DE 19701  
302-353-4400  
[www.alphagraphics  
bear-glasgow.com](http://www.alphagraphicsbear-glasgow.com)

**SOCIAL MEDIA CONSULTING****Connor Creative House**

Krista Connor  
Bear, DE  
302-985-3028  
connorcreativehous  
e.com

**TOURISM****Greater Wilmington Convention & Visitors Bureau**

Jen Boes  
100 W. 10th St. #20  
Wilmington, DE 19801  
800-489-6664  
[visitwilmingtonde.com](http://visitwilmingtonde.com)



## TRAINING AND COACHING

**In A Heartbeat, LLC**  
Jeff Berryman  
270 Presidential Dr  
Wilmington, DE 19807  
302-499-4800  
inaheartbeatllc.com

## TRASH REMOVAL /DUMPSTERS

**Waste Masters Solutions**  
Tony Ingram  
19 Davidson Lane  
New Castle, DE 19720  
302-287-8518  
wastemasters.com

## TRAVEL

**Bethany Travel /Dream Vacations**  
Cindy McCabe  
28436 Dupont Blvd  
Millsboro, DE 19966  
302-933-0955  
dreamvacationinc.com

**Creative Travel, Inc**  
Bob Older  
700 Capitol Trail 11E  
Newark, DE 19711  
302-658-2900  
creativetravelinc.com

**Travel Queen Adventures**  
Michele Nichols  
Newark, DE  
302-333-7858  
michelenichols.inte  
letravel.com

## TREE SERVICES

**Bartlett Tree Experts**  
Lori Clark  
466 B & O Lane  
Wilmington, DE 19804  
302-995-7562  
www.bartlett.com

## VIDEO PRODUCTION

**Broad Reach Communications**  
Charles Bailey  
Landenberg, PA 19350  
610 470-9610  
www.broadreach.tv

## WEB DESIGN AND DEVELOPMENT

**Built4vision**  
Maurice Blake  
Newark, DE  
302-610-9894  
Built4vision.com

## CAN Web

**Management**  
Nicole Hammond  
Milford, DE 19963  
302-503-3187  
canwebmanageme  
nt.com

## Delmarva Digital

Tim Smith  
220 E. Front Street  
Laurel, DE 19956  
302-875-7700  
delmarvadigital.com

## WEDDING SERVICES

**Keep It Spinnin Entertainment**  
Dave Voss  
Frederica, DE 19946  
302-293-1524  
www.facebook.com  
/SpinMaster49

## White Clay Creek Country Club

Ryan Kidwell  
879 Delaware Park Bl  
Wilmington, DE 19804  
302-994-6700  
whiteclaycreek.com

# BUILD YOUR BRAND

BE MORE VISIBLE



### 3 WAYS TO BECOME A SPONSOR

Choose an event and register as a sponsor.



Use chamber dollars  
from membership levels



Select an amount &  
let us choose the best way to use it.



302-482-2120

## Join the DSBC Chamber Bucks Program

1. Paper Program
2. Digital Gift Card
3. Membership Levels

**DSBC** Chamber Bucks  
DIGITAL GIFT CARD

**Support Our Local Businesses**

The Delaware Small Business Chamber brings together many of your favorite retailers, restaurants, services, and entertainment all in one place. Use your DSBC Gift Card at participating locations throughout Delaware and surrounding areas — there's truly something for everyone!

- ✓ Accepted at Participating Businesses
- ✓ Easy Digital Use
- ✓ Supporting Local Communities

Call 302-482-2120



# COURTYARD<sup>®</sup>

BY MARRIOTT

UNIVERSITY OF DELAWARE

## YOUR STAY, YOUR WAY

Experience a comfortable stay in the heart of campus, perfect for business, leisure, or social events.

Enjoy modern amenities, fantastic dining and exceptional service at the University of Delaware's premier hotel.



- Spacious, modern guestrooms
- Indoor Bistro serving breakfast, dinner & Starbucks<sup>®</sup> coffee
- Free Wi-Fi & flexible meeting spaces



☎ 302-737-0900 • [marriott.com/ilgud](http://marriott.com/ilgud)

400 David Hollowell Drive • Newark, DE 19716

**No matter what type of small business you are, you can benefit from membership**

# Join the DSBC







# Business 2.0



Are you starting a new business?

Do you know someone starting a new business?

Are you looking to **expand an existing business?**

The Delaware Small Business Chamber is partnering with local and national organizations to help people start and expand their businesses.

Join us the **3rd Thursday** of the month at **11 AM** and meet with professionals in business plans, HR, insurance, legal, finance, & **more!**



## Expert Resources to Help You Succeed!

The Delaware Small Business Chamber is partnering with local and national organizations to help people start and expand their businesses.

Join us the **3rd Thursday** of the month at **11 AM** and meet with professionals in business plans, HR, insurance, legal, finance, & more!



**You do not need to join the DSBC to attend, but membership brings extra benefits!**

**THIRD THURSDAY EVERY MONTH | STARTS AT 11:00 AM**  
**DSBC OFFICE 700 Capitol Trail 11F Newark, DE 19711**

**FREE FOR ANYONE TO ATTEND - REGISTRATION IS REQUESTED**  
**[www.dsbchamber.com](http://www.dsbchamber.com) | 302-482-2120**





**Call today!**  
**302-652-0496**

*formerly*



## **CHECK OUT ALL OUR TOP SELLING PRODUCTS & SERVICES**

- Creative Design
- Marketing Services
- Advertising Strategies
- Digital Printing
- Custom Bags & Boxes
- Mailing Services
- Promotional Products
- Logo Creation
- Presentation Folders
- Custom Branded Apparel
- Signs, Banners & Posters
- Business Stationery
- Finishing Solutions
- Labels & Stickers
- Corporate Branding
- Custom Checks
- Plaques & Awards
- Announcements/Invitations

**AND MUCH MORE...**

**1723 West 8th Street, Wilmington, DE 19805**

**302-652-0496**

**[de201.minuteman.com](http://de201.minuteman.com)**





# Exciting **EVENTS** ALL YEAR LONG!

## NETWORKING MIXERS

Connect with Local Business Leaders



## EDUCATIONAL SEMINARS

Learn & Grow Your Skills



## RIBBON CUTTINGS & CELEBRATIONS

Grand Openings & Milestone Events



## GOLF OUTINGS & ANNUAL AWARDS

Fun & Recognition Events



**DOZENS OF EVENTS** EACH MONTH ACROSS DELAWARE!

View the Full Calendar & Register at

[www.dsbchamber.com](http://www.dsbchamber.com)

302-482-2120





# YOUR PASSPORT TO THE WORLD!

Without CREATIVE, it's just travel



**No Fees.**

**Full Service Travel Experts!**

**32 Years in Business**

Travelled to over **75 countries** on **5 continents**, so we know travel!



# CREATIVE

**Travel Inc.**