

VISITOR GUIDE
2026 - 27

Barmouth

Croeso i Abermaw





Barmouth

MOUNTAINS SAND SEA

WELCOME TO BARMOUTH

Here, the mountains meet the sea. Barmouth sits between the golden sands and glittering waters of Cardigan Bay and the rugged peaks of Eryri (Snowdonia), giving the town a remarkable setting.

The town itself has real character, where Victorian terraces stand beside narrow lanes and cottages dating back to the 15th century. Follow the Heritage Trail to uncover stories from the past, or wander through around seventy independent shops offering everything from everyday essentials to distinctive, handcrafted finds.

When it's time to eat or drink, there is a wide choice of cafés, pubs, bars and restaurants - several with national awards.

All around is a landscape made for exploring. You might hike the hills, walk along the beach or take a trip on the coastal railway, often listed among the world's most scenic, or simply sit and watch the changing light over the estuary.

There is more here than fits into a single visit, which is perhaps why so many visitors return.

Enjoy your stay

CROESO I ABERMAW

Yma mae'r mynyddoedd yn cwrdd â'r môr. Saif Abermaw rhwng tywod euraidd a dyfroedd disglair Bae Ceredigion a chopau garw Eryri gan roi lleoliad arbennig i'r dref.

Mae gan y dref ei chymeriad ei hun, gyda rhesi Fictoriaidd ochr yn ochr â lonydd cul a bythynnod sy'n dyddio'n ôl i'r 15fed ganrif. Dilynwch Lwybr Treftadaeth Abermaw i ddarganfod straeon o'r gorffennol, neu crwydrwch drwy ryw saith deg o siopau annibynnol sy'n cynnig popeth o hanfodion bob dydd i eitemau unigryw wedi'u crefftio â llaw.

Pan ddaw hi'n amser bwyta neu yfed, mae dewis eang o gaffis, tafarndai, bariâu a bwytai, nifer ohonynt wedi ennill gwobrau cenedlaethol.

O'ch cwmpas mae tirwedd sy'n gwahodd ei harchwilio. Gallwch gerdded y bryniau, cerdded ar hyd y traeth neu fynd ar daith ar y rheilffordd arfordirol, sy'n aml yn cael ei rhestru ymhlith y rhai mwyaf prydferth yn y byd, neu eistedd a gwyllo'r golau'n newid dros yr aber.

Mae yma fwy nag y gellir ei weld mewn un ymweliad, a dyna pam mae cymaint o ymwelwyr yn dychwelyd.

Mwynhewch eich arhosiad

USEFUL INFORMATION

Supermarkets: Co-op, Spar, Iceland

Fuel: Dyffryn Ardudwy (5 miles), Dolgellau (9 miles)

EV Chargers: Co-op car park and also in Main Car Park (behind RNLI building)

Boating / Water Sports and Beach Wheelchair:

Harbour Master 01341 280 671 / 07795 012 747

Doctors surgery: Minfor Surgery 01341 280 521, for NHS Direct call free on 111

Minor Injury Unit (nearest): Dolgellau LL40 1NT 03000 850 020

Chemist: Rowlands Pharmacy, High Street Barmouth, 01341 280589

Vet: Marine Parade 01341 280 732

Post Office: Inside the Spar

Cash Points: Co-op, Spar, Alwena Bright Solicitors' Building, Amusement Arcade

Market Day: Thursdays during the main season

Churches: St John's (Anglican), St Tudwal's (Catholic),

Christchurch (Presbyterian), Elim (Pentecostal)

Garages: Bradbury's (Park Road), Coastline Tyres (Jubilee Road)

Laundrette: King Edward Street

DIY & Gardening: LL DIY, Station Road



Blue Line cabs
TAXI
Barmouth
07585855243
Friendly reliable service Competitive prices



A - 2 - B
TAXIS
Mobile: 07860 739073
Take Away Delivery
8 SEATER Bookings Available

PUBLIC TOILETS - LOCATIONS:

By the railway station (seaward side of the track),
at the harbour, and on the North Promenade.

See the town map in the centre pages for exact locations.



LIFE IN BARMOUTH

Barmouth has all the charm of a traditional seaside town: miles of sandy beach, donkey rides, trampolines, crabbing, candy floss and classic amusement arcades. Families have been making memories here for generations.

Look a little deeper and you'll find a fascinating past too. With links to Henry Tudor, the Titanic and the National Trust, Barmouth's history is full of surprises. Wander up the steps through The Rock, the maze of narrow lanes tucked behind the Victorian high street.

The walk across the bridge gives wonderful views of the harbour, Mawddach Estuary and mountains beyond. Just remember a few coins for the honesty toll, or pay by phone to keep the Toll Troll happy.

The harbour is the perfect spot to pause with a coffee or watch the boats drift by. Feeling adventurous? Try a boat trip or stand-up paddleboard session for a fresh perspective on the town.

Food is a big part of Barmouth life. From traditional fish and chips to friendly cafés, lively pubs and fine dining, there's something to suit every budget and taste.

Walkers are well catered for too. Barmouth is a gateway to some of Eryri's finest peaks, with plenty of gentler routes starting right in town. Call in at the Tourist Information Point at the station for maps and guidebooks.

And for entertainment, don't miss the Dragon Theatre. This converted chapel is full of character and hosts a lively year-round programme of films, plays, music, comedy and community events.

Whether you come for a weekend or a longer stay, Barmouth has a way of getting under your skin. Many visitors return year after year, and some never leave. In the shops and cafés you'll hear Welsh spoken alongside accents from across the UK, a mix of local pride and warm welcome that makes Barmouth truly special.

COMMUNITY

Barmouth has a strong community spirit that visitors quickly notice, even if they cannot quite define it. This is a town where people know each other, look out for one another, and take genuine pride in where they live.

Some families have been here for generations, while others arrived more recently and chose not to leave. What they share is a connection to the place itself. Living at the mouth of the Mawddach Estuary, you are drawn into the landscape. The tides set the rhythm of daily life, the sea air clears your head, and the mountains and beaches become a natural space to relax.

That pride shows throughout the year. Many events are organised by volunteers: the summer carnival, fireworks displays, seasonal celebrations, sporting events and local festivals are run by residents giving their time because they care about the town. Fundraising and charity projects are a normal part of everyday life.

Outside the main holiday season the town does not fall quiet. Through the winter months it is the local community that keeps shops, cafés, clubs and activities going. Regular swimmers, walkers, runners and social groups continue year-round, and visitors at this time often discover a calmer and more personal side of Barmouth.

TANIO BERMO & ABER TANIO MODEL RAILWAY

Tanio Bermo, based next to The Royal on King Edward Street, is a friendly volunteer-led community maker space open to visitors, residents and local businesses.

Part of the Ffiws (Fuse) network of Gwynedd and Anglesey community workshops, it offers access to a wide range of craft and digital equipment, regular hands-on work-

shops, and a welcoming shared space for making and learning. Tanio Bermo also runs a popular Repair Café, where volunteers help fix and restore everyday items, from clothing and small appliances to bikes and household objects, saving money and reducing waste.

With a strong focus on re-use, skill sharing and creativity, it's a practical way to support the circular economy while meeting local people and trying something new. Everyone is welcome. Details and session times can be found at taniobermo.co.uk.

In the window of Tanio Bermo you'll also find a unique model railway layout inspired by Barmouth and its surroundings. Built to showcase what can be made using the equipment inside, it's usually running on Saturdays and is always a hit with families.





SPORT

The Leisure Centre at bywniach.cymru offers a well equipped gym, indoor cycling, a sports hall and a programme of fitness classes.

Down on the harbour, the **Merioneth Yacht Club** merionethyachtclub.co.uk welcomes guests arriving by land or by sea, with regular rowing, sailing and a range of social activities.

SUP Barmouth runs Stand Up Paddle Boarding lessons and tours starting in Barmouth Harbour and on the stunning Mawddach Estuary with all equipment provided for ages 8+
More info at supbarmouth.co.uk

f SUP Barmouth

BOOK A LESSON OR TOUR

STAND UP PADDLE BOARDING
SUP BARMOUTH

Call: 07791 951 439
www.supbarmouth.co.uk

If you prefer a gentler pace, **Barmouth Bowling Club** invites visitors to join on club days, every Monday, Wednesday and Saturday at 1.45pm. Games on other days can be arranged by calling 07464 041131 or 07818 871471, with equipment and tuition available for beginners.

Football fans can come along and cheer on **Barmouth and Dyffryn United**, one of the oldest football clubs in the UK and passionately supported by the community. Matches are played on a fantastic pitch, making it a great place to watch grassroots football at its best. For fixtures and updates, go to facebook **Barmouth & Dyffryn United F.C. (Official)**





BARMOUTH RAILWAY STATION

Barmouth lies on the scenic Cambrian Coast Line and the station is both a welcoming arrival point for visitors and a handy hub for locals. You can buy rail tickets and railcards, get practical travel advice, and plan journeys along the coast or into the mountains.

Inside the building you'll also find **Sunset Bay Lifestyle**, a well-stocked gift shop full of exclusive, locally inspired Barmouth gifts and Barmouth-branded hoodies.

If you are looking for accommodation, **Lounge Holidays** has a base here and offers a wide range of staycation properties.

Beside the ticket office is Barmouth's **Tourist Information Point** with maps, leaflets and ideas for things to see and do, so you can quickly get your bearings and plan your stay.

The railway itself is one of Britain's most scenic journeys, running past sandy estuaries, salt marshes and mountain

views. From Barmouth you can head north to Harlech and Porthmadog or south to Tywyn and Aberdyfi - an easy way to explore the coast without the car.

Scan QR code for live train times, service updates and journey planning from [tfw.wales](https://www.tfw.wales)

Transport for Wales



**PLEASE NOTE:
NO PUBLIC TOILETS IN
THIS STATION BUILDING**

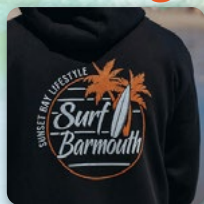
**The nearest public toilets
are directly behind this
building, on the other side
of the railway crossing.**



SUNSET BAY LIFESTYLE

BARMOUTH STATION, LL42 1LS

Signature Barmouth Hoodies



Thoughtful Coastal Gifts



Inspired by Barmouth



AVAILABLE IN STORE AND ONLINE
Open 6 days a week April - October
01341 281617 · sunsetbaylifestyle.co.uk





**Furniture &
Homeware Store**

**High Street
Barmouth**



SHOPPING

Shopping in Barmouth reflects the character of the town: independent, varied and easy to explore on foot. The High Street is lined with galleries, gift shops, practical stores and long established family businesses, many of them open throughout the year.

Among them is an unexpectedly large furniture and homeware store spread across three floors, with furniture, lighting and interior pieces more typical of a much larger town. It draws visitors from well beyond the immediate area and has become a destination in its own right.

Elsewhere you'll find coastal gifts, cards and small decorative items alongside artwork and photography inspired by the Mawddach estuary and the surrounding hills. Mixed in are the everyday shops used by residents - clothing, shoes, books, hardware, DIY supplies and food sitting comfortably beside seaside goods and small independents.


Together they give the town centre its character: a place that serves daily life as much as holidays, and one that stays lively throughout the year rather than only in summer.



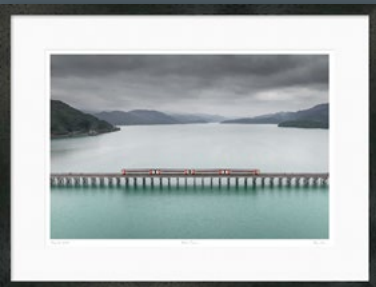
Sea & Sage
celebrates the coast
through art, cards,
homewares and gifts
- created to inspire
and soothe the soul.

www.sea-sage.co.uk





VERDUN HOUSE
GALLERY



Come and discover the
beauty that surrounds us.

High Street, Barmouth, LL42 1DS
verdunhouse.co.uk



EVA AMOUR
LOVE LIFE

EVA AMOUR
LOVE LIFE

Eva Amour Adult Boutique
6 St Annes Square, High Street, Barmouth, LL42 1DL
Tel: 01341 760 420 sales@evaamour.co.uk
Shop in-store or online at www.evaamour.com



Gwelyhaul
Sunbeds

Sunbeds
Tanning Products
Lingerie & Nightwear
Treatment Room

High St Barmouth
07464 964 937



Abermaw
QUILTING
& CRAFTING

**Abermaw Quilting
& Crafting**

Explore fabrics, wool, haberdashery
and craft kits - endless inspiration
for your next project

Where creativity comes to life.

Church Street, Barmouth,
LL42 1EW
Tel: 01341 281662
email: info@quiltandcraft.co.uk
www.quiltandcraft.co.uk



Barmouth,
for all seasons

*Lots of shops, cafés, pubs and
restaurants stay open all year.*

OPEN ALL YEAR

Many people first come to Barmouth on a warm summer's day, when the beach is busy and the streets are full. But the town doesn't shut down when the season ends, life simply settles into a gentler rhythm.

Unlike many seaside resorts, Barmouth has a large year-round community. Some businesses take a short winter break, but plenty remain open, welcoming regulars and visitors alike. Shops, cafés and pubs continue to serve the town as much as its guests, and locals have time to stop and chat.

A stroll through the town, or along the promenade and beach, becomes delightfully peaceful, and when there is snow the town looks almost magical.

If you enjoy the outdoors, whether you are a walker, hiker or photographer, you will soon notice that some of the most spectacular sunsets arrive in mid-winter, when the sun sets directly in front of the beach.

Visit barmouth-wales.co.uk/open-all-year

Barmouth isn't just a summer destination. Increasingly, people visit all year round, drawn by good food, high quality accommodation and independent shops.





EATING & DRINKING

Barmouth's dining scene has blossomed in recent years. From an early-morning coffee to a relaxed family meal or a special evening out, there is plenty to enjoy.

Throughout the town you'll find cafés and snack bars serving breakfast, homemade cakes and freshly baked treats.

For something quick, there are excellent takeaways, including fish & chips that regularly feature in "best of" lists. It's the restaurants, however, that really set Barmouth apart. From family-run eateries to intimate bistros and fine dining, the range is impressive, and some venues have gained national attention. During peak periods, booking ahead is strongly recommended as tables fill quickly.



**Flossie's
Ice Cream
Parlour**

**Ice Cream, Waffles, Crepes
On the prom, in the funfair**

Barmouth has a lively nightlife. Traditional pubs serve hearty food, Welsh drinks and locally brewed ales, often with live music at weekends. You'll also find craft beers and ciders, along with a stylish cocktail bar and an elegant wine bar where knowledgeable staff can guide you to the perfect glass.

ISIS PIZZERIA

Breakfast, Lunches & Evening Meals
All food freshly made to order
Pizzas our speciality

On the Harbour - Barmouth
Tel 01341 280 802

THE

Booking
Advisable

01341 281400

Bank

Restaurant open
from 6pm

(opening times
may vary)

We pride ourselves on serving great food in a relaxed and informal atmosphere. Offering an inventive seasonal menu, a well-balanced wine list and tempting cocktails.

High Street, Barmouth, LL24 1DW



Two Names, One Place - The Fanny Talbot & The Tilman, Barmouth

At the meeting point of mountains and sea, Barmouth is a town shaped by character.

Two of its most distinctive places to stay and dine - The Fanny Talbot and The Tilman take their names from figures who helped define the town's past, and today reflect two different ways to experience it.



The Fanny Talbot, named after the Victorian benefactor whose generosity enriched local life, is a relaxed gastropub with rooms centred on warmth and gathering. Celebrated with 3 AA Rosettes and now Michelin-recognised (featured in the Michelin Guide for its exceptional cooking), it offers seasonal cooking, a calmer more centric atmosphere, comfortable bedrooms that create an easy sense of occasion - the sort of place you arrive after a coastal walk and stay long into the evening.



Just a short stroll away, **The Tilman** pays tribute to explorer and mountaineer H.W. "Bill" Tilman. With its lively, welcoming bar buzzing with cocktails, craft beers, and good chat, it's got that sociable spark - yet upstairs the light-filled, stylish rooms offer a peaceful retreat for walkers, wild swimmers, and anyone craving a fresh reset after the day's adventures.

Together they capture Barmouth itself: one sociable, one restorative, both rooted in landscape.



Here, heritage isn't something you visit - it's something you experience, between sea air mornings and slow, relaxed evenings.



thefannytalbotbarmouth.co.uk
thetilman.co.uk



FUDGERIDOO IS BETTER THAN FUDGERIDON'T!



BUY 3 BARS - GET THE 4th FREE Any 4 Flavour Combo!
FIND US ON THE HIGH ST! www.fudgeridoo.co.uk

SWEETS, TREATS & TAKEAWAY

After a walk on the beach or along the Mawddach, many people drift towards the High Street or the harbour in search of something warm, sweet or freshly cooked.

The colourful sweet shop on the High Street is hard to walk past, and on the harbour you'll find artisan gelato with 42 flavours to choose from. It's the perfect place to enjoy a cone on the quay, or a traditional knickerbocker glory as the boats move with the tide.

No visit feels complete without fish and chips. You can sit inside, or try your luck on the promenade, under the close supervision of the seagulls. It remains a simple seaside ritual that never really changes.

Away from the bustle of the front, small cafés tucked into the streets at the centre of town offer coffee, toasties and a chance to sit down for a while. Easy to miss if you hurry past, but often the places visitors return to again and again.



The Mermaid
FISH BAR

Traditional
Fish & Chips

Eat in or
Take Away

Est. 1964 • Award Winning • No.1 in Wales
JUBILEE ROAD, BARMOUTH
01341 212101

 mermaidfishbarbarmouth www.themermaidfishbarbarmouth.co.uk

THE ROYAL



KING EDWARD STREET, BARMOUTH U42 1AB
TEL: 01341 213992

ALES & LAGERS
GUEST ROOMS
FOOD, SPORT TV
SNOOKER & POOL
DOG FRIENDLY



theroyalbarmouth.co.uk



LEARN.
TASTE.
ENJOY.

Experience nothing but beautiful wines at **Wild Wines Barmouth**



Wild Wines Barmouth

A relaxed wine bar and shop in the centre of town. Carefully selected wines available by the glass or bottle, plus Welsh craft beers, ciders and cocktails. Also low & alcohol-free options. Wine tastings, themed nights and occasional live music.

Follow us @wild_wines_barmouth
Bookings by email
wildwines@yahoo.com
01341 280458

HENDRE COED ISAF

LLANABER

COTTAGE

LODGES

CARAVANS

THE OLD MILL RETREAT

TALYBONT

OLD MILL HOUSE LODGES CARAVANS

HOLIDAY ACCOMMODATION



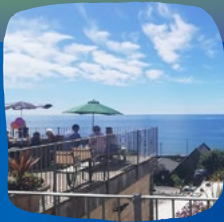
ELEVATED
SEA VIEWS

THE PERFECT
PLACE TO RETREAT

www.hendrecoedisaf.co.uk
hendrecoed@gmail.com

www.oldmillretreat.co.uk
information@oldmillretreat.co.uk

01341 280 597



BAY VIEW
RESTAURANT

ENJOY A DINING EXPERIENCE WITH A STUNNING SEA VIEW

www.bayrestaurantbarmouth.co.uk

WEBSITE

Based on Hendre Coed Isaf, Llanaber, LL42 1AJ

DOG FRIENDLY



SLATE MINES & ADVENTURE

The World Heritage listing covers six specific mining sites, the nearest being the **Bryneglwyns Quarry** near Abergynolwyn, part of a wider complex that includes the Corris mines. Here you'll find **King Arthur's Labyrinth**, a boat journey into the mountain that leads to vast caverns where the legends of Arthur are told. It's a much-loved family attraction, with a craft village of workshops, shops, café, playground and storytelling experiences alongside.

For a closer look at the awe inspiring caverns left by the slate industry, join **Corris Mine Explorers**. Small groups are guided deep underground through miles of old workings and tunnels. The guides are knowledgeable, friendly and clearly passionate about their subject. Each trip is unique, with routes chosen to suit the group and its appetite for adventure. Expect fascinating detail about the mine's history and the men who worked it. Tours must be booked in advance.

Closer to Barmouth are the slate caverns at **Llanfair**, where visitors are equipped with a hard hat and torch before setting off to explore independently. It's a vivid way to experience the tough conditions in which miners once toiled.



In recent years, North Wales has gained a reputation for world-class adventure attractions. Although further afield than Barmouth, many are within easy reach for a day trip, just check travel times before booking - it could be a very early start!

Zip World offers a unique perspective on the slate heritage of North Wales, with four sites featuring everything from high-speed zip wires and giant underground trampolines to high ropes, climbing walls, go-karts, a forest coaster and a giant swing. For a slower pace, there's also an underground tour exploring the history of the slate mines.

Mountain biking is another major draw. **Coed-y-Brenin**, just north of Dolgellau, has trails for all abilities, while **Antur Stiniog** further north delivers adrenaline-packed downhill routes through dramatic old slate workings. *(See page 41 for more cycling options.)*



WORLD HERITAGE SITE & STEAM TRAINS

In 2021 a new World Heritage Site was created in North Wales. Alongside Edward I's castles, the **Slate Landscape of North West Wales** became the 33rd UK site and the 4th in Wales. The designation recognises how a quiet farming region was transformed into a place where the slate industry shaped every aspect of life.

This landscape was formed by quarrying, processing and transporting slate, which from the late eighteenth to the twentieth century supplied roofing and building materials to markets worldwide. It is a cultural landscape - one where nature and industry combine to show the deep connection between people and their environment.

The listing acknowledges the industrial, cultural, social and international importance of the slate industry. Six key sites are highlighted, covering mining areas and transport links from quarry to sea. Beyond these, much of the land between Bangor and Tywyn is also designated a "Landscape of Historic Significance". It is hard to find anywhere in this part of North Wales untouched by slate - from quarries and railways to cottages and stately homes.



Trains: Many of the region's famous narrow-gauge railways grew out of the slate trade. Within the World Heritage listing the **Tallyllyn and Ffestiniog** are especially recognised, both for their historic role in transporting slate and for pioneering early steam locomotive development. Engineering techniques first tested here were later adopted worldwide.

From Barmouth it's very easy to experience these lines. Take the ferry across the estuary (when trains are running) to the **Fairbourne Railway**, or ride the mainline across Barmouth Bridge, where the "little" station sits directly opposite the "big" one.

Further down the coast at Tywyn, also on the mainline, is the starting point of the **Tallyllyn Railway**. The line runs for more than seven miles through the beautiful Fathew Valley. Travelling from Tywyn to Abergynolwyn and Nant Gwernol, the train passes Dolgoch Falls and also provides access to excellent woodland walks.

Other heritage lines include the **Ffestiniog, Welsh Highland, Llyn Padarn, Bala and the Snowdon Mountain Railway**. Advance booking is highly recommended for all.



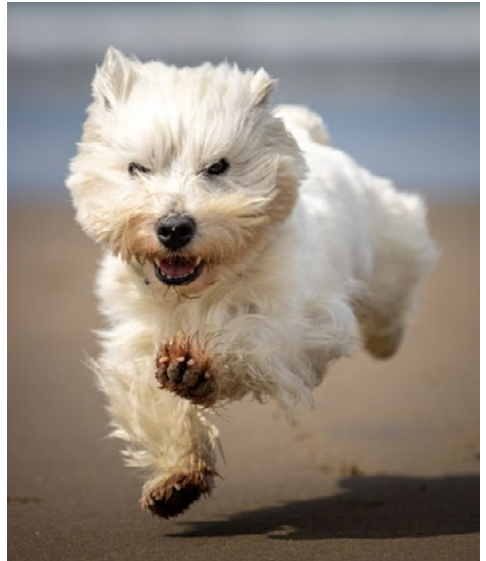
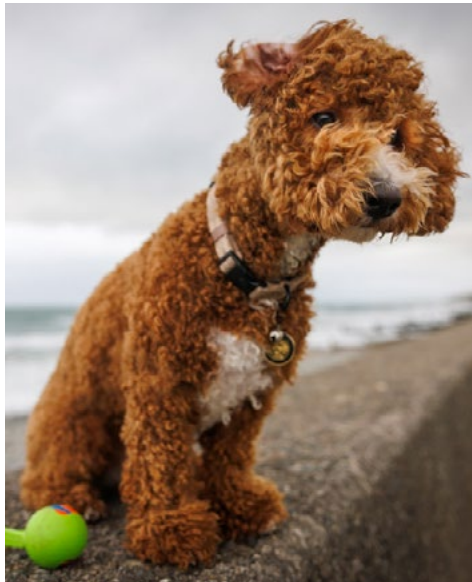
BARMOUTH FOR DOGS

Dog owners will find Barmouth a wonderful place to visit, whether for a day trip or a longer stay. The town has a well earned reputation for being dog friendly, making it easy to enjoy your holiday without leaving your four legged companion behind.

Many pubs welcome well behaved dogs in their bar areas, and several cafés offer outdoor seating where dogs are just as welcome as their owners.

Water bowls are a common sight outside shops and eateries, and you'll often find staff ready with a friendly greeting or a treat.

After one of the many long and scenic walks that begin in and around the town, it's easy to stop for a drink or a bite to eat without having to plan around your dog.



For dogs that love to run on the sand, there are stretches of beach open to them all year round.

The only restriction is the section opposite the RNLI boathouse, which has a seasonal no-dog policy from 1 April to 30 September. Beyond that, miles of beach remain open, stretching from the dunes on Marine Parade north along the promenade to Llanaber and beyond, accessible at low tide.

Dogs are also welcome on public transport, which makes exploring the neighbouring towns and villages easy and enjoyable.

Barmouth really is a very dog friendly town. The only thing we ask is that owners clean up after their pets using the many bins provided, so everyone can continue to enjoy this beautiful environment.

SAFETY FIRST

While you're enjoying your holiday on the beach or in the hills, volunteers are working around the clock to keep you safe. The RNLI and the [South Snowdonia Search and Rescue Team](#) train extensively so they can respond in an emergency. Their work relies on supporters who raise funds, maintain equipment, organise events and spread the word. Please consider donating so these organisations can continue protecting everyone.

To see the local teams in action, search for SOS Extreme Rescues on BBC iPlayer. Filmed by BBC Wales over several years, the series features the [Coastguard](#), Barmouth RNLI crew and South Snowdonia Search and Rescue Team.

SOUTH SNOWDONIA SEARCH & RESCUE

This team is made up entirely of volunteers who give their time freely, often dropping everything at a moment's notice. They train year-round to stay ready.

Formed in 1991 from the Rhinog and Moelwyn rescue groups, the team covers around 800 square kilometres. Its 30+ members come from all walks of life, uniting whenever North Wales Police need help in a mountain emergency. They also assist in searches for missing or vulnerable people, and over a third are trained in swift-water rescue for incidents in rivers and lakes.

They also train with other rescue groups to sharpen skills and ensure smooth co-operation during joint call-outs.

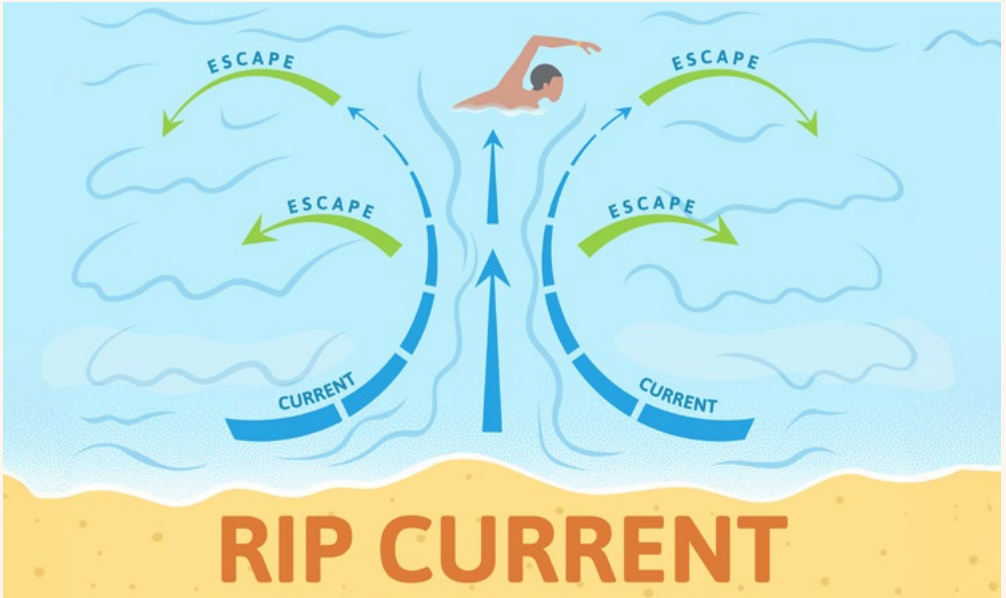


RNLI BARMOUTH

There has been a lifeboat in Barmouth since 1828, making it one of the oldest RNLI stations in the UK. Today, the station has two lifeboats: the D-class inshore lifeboat Craig Steadman, and Ella Larsen, a Shannon-class all-weather vessel launched in 2019. With a top speed of 25 knots, Ella Larsen is almost 50% faster than her predecessor, giving crews precious extra minutes when lives are at stake.

Barmouth is known for its enthusiastic RNLI supporters. Volunteers raise significant funds through events held throughout the year, with the summer Dog Show a local favourite. The RNLI shop, run entirely by volunteers, is usually open from Easter to October. www.rnli.org

UNDERSTANDING RIP CURRENTS



Even on a calm day when the sea appears gentle, you still need to be aware of hidden dangers. Rip currents are among the most common - fast-flowing channels of water that run out to sea and can quickly carry swimmers away from the shallows.

Rips usually flow at 1-2 mph, but can reach 4-5 mph. Faster than an Olympic swimmer! They are often strongest near river mouths, piers or groynes, but can occur anywhere along the beach.

How to spot a rip current

Rips can be difficult to spot, but look for channels of churning, choppy water, or stretches that appear unusually flat and where waves aren't breaking like the rest of the shoreline.

If you do find yourself caught in a rip

- *Don't try to swim against it - you'll get exhausted*
- *If you can stand, wade don't swim*
- *If you can, swim parallel to the shore until free of the rip and then head for shore*
- *Always raise your hand and shout for help.*

Important to know in Barmouth

There are no lifeguards on Barmouth beach, so please take extra care. Avoid swimming near the mouth of the estuary. Stay within your depth, supervise children closely and do not use inflatables.



Scan QR code for more safety advice, or visit barmouthtowncouncil.gov.uk/water-safety





BARMOUTH BEACH

Barmouth Beach is a glorious stretch of golden sand, backed by a mile-and-a-half promenade running right alongside the town. The beach combines wide, flat sands with rolling dunes, with donkeys, fairground rides and plenty of ice cream to enjoy. Best of all, it's only steps from the High Street - perfect for fish and chips on the sand or a quick dash back for extra sun cream.

BEACH BASICS

Barmouth Beach often looks calm and inviting, with gentle waves and shallow water. But sea conditions can change quickly. Strong currents form around the river mouth, and rip currents can appear along the shore without warning. Enjoy the water, but stay safe.

Help us keep the beach beautiful by taking your rubbish home or using the bins provided. Please don't leave litter behind in the sand or dunes.

During the main season, part of the beach is reserved as a dog free zone. Look out for the signs, which mark the area from the donkeys to the causeway.

ACCESSIBILITY

Getting onto the sand can be difficult for wheelchair users, but Barmouth now has two specialist beach wheelchairs so more people can enjoy the shore.

They are stored at the Harbour Master's office and can be borrowed free of charge. Please note there is no hoist available at present, so users must be able to transfer independently.

Please phone to arrange if you would like to use a wheelchair:

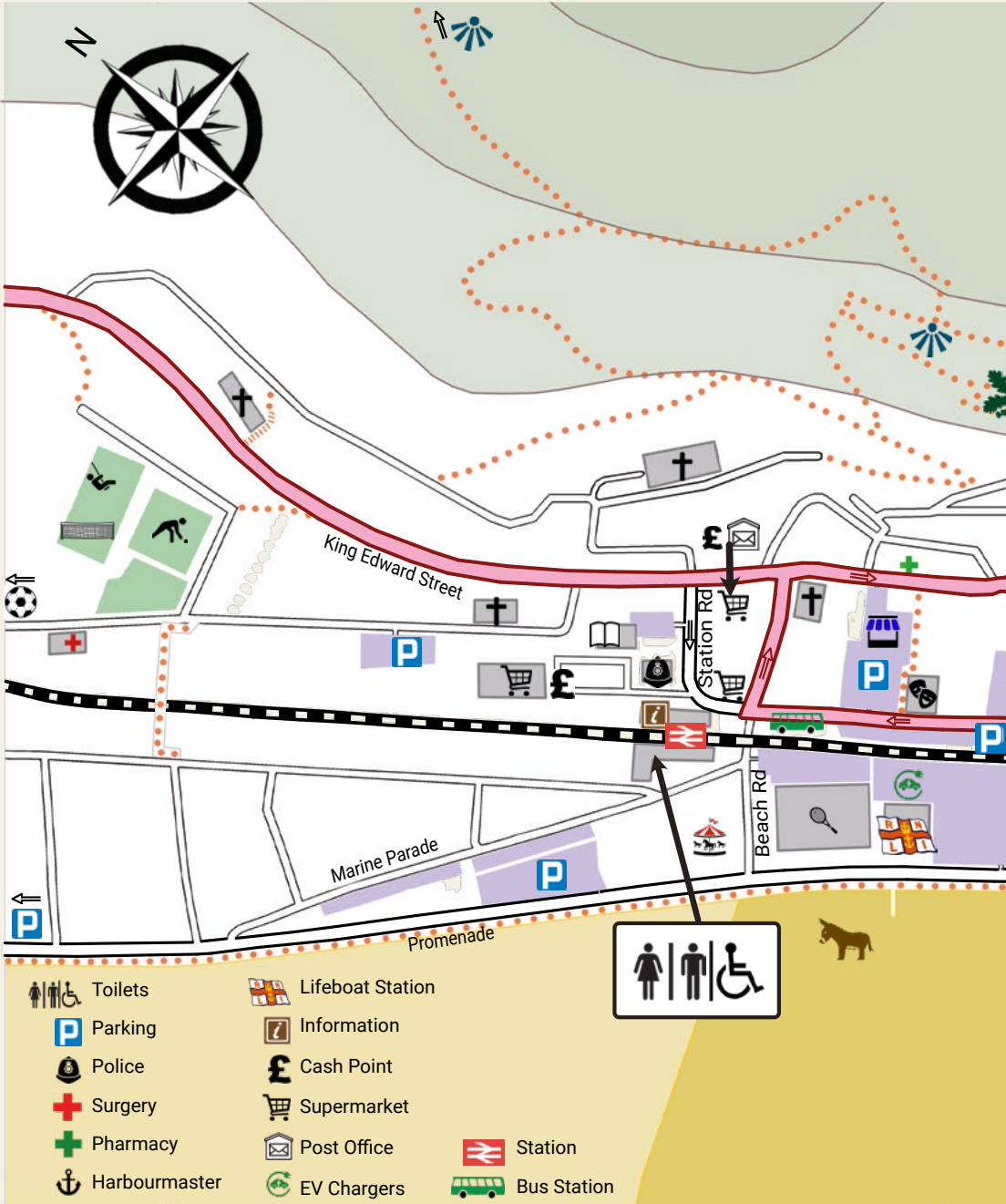
01341 280 671

07795 012747

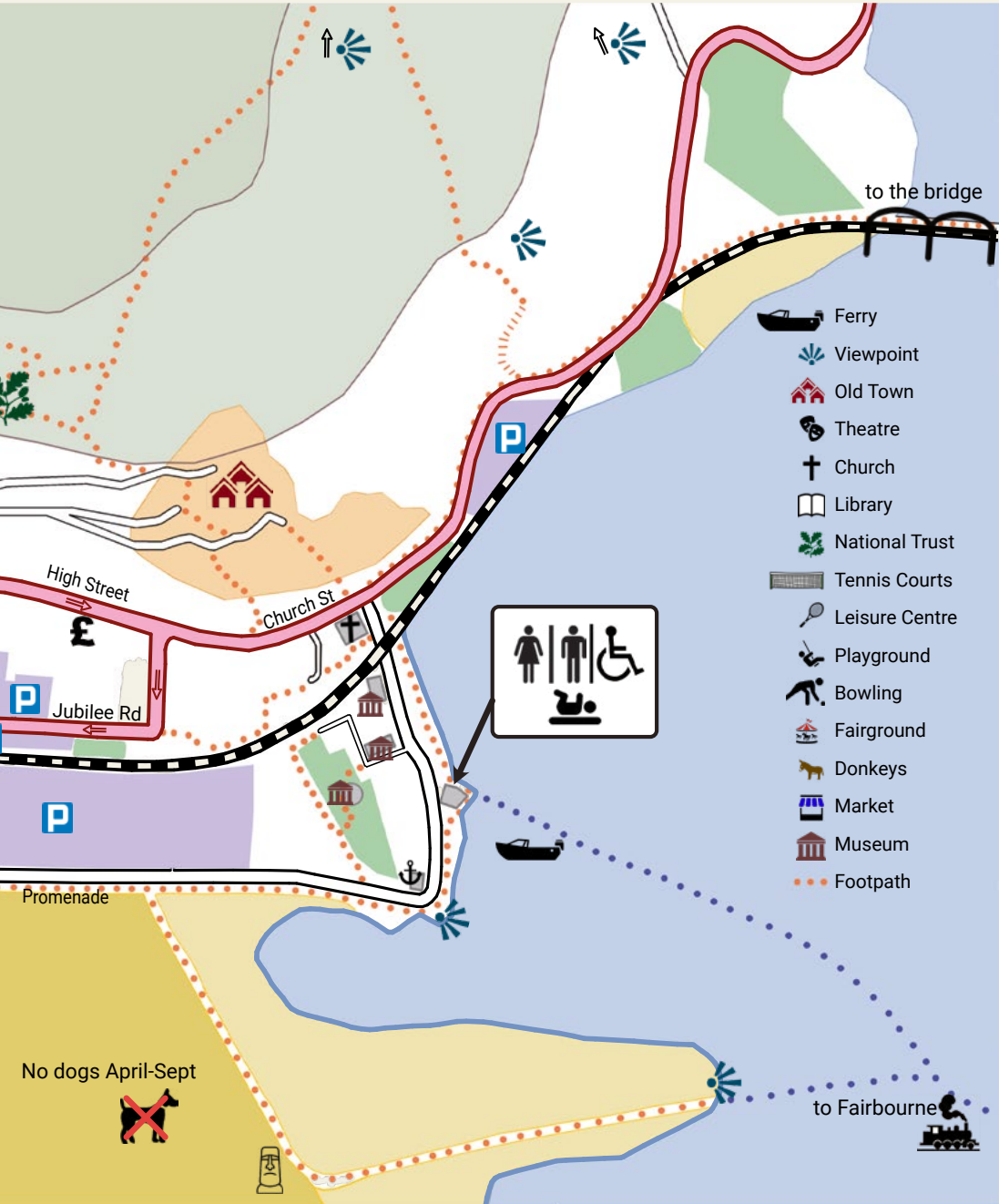
07557 077140



BARMOUTH



TOWN MAP





EVENTS



WHAT'S ON 2026 - 27

Alongside the many year-round activities in and around Barmouth, the town hosts a lively programme of special events. For the latest updates, see barmouth-wales.co.uk/events as well as the organisers' own websites and Facebook pages.

The RNLI runs a variety of events throughout the year, from open days and dog shows to live music gigs, always fun, and raising vital funds for their lifesaving work. Art lovers can enjoy exhibitions at St John's Church Hall or browse the history project in St John's Church. Local pubs regularly feature live music, quiz nights karaoke and bingo. Both the Fairbourne and Tallylyn Railways also put on special events, ranging from Easter Egg hunts to spooky Halloween parties and festive Santa Trains.

Fairbourne Railway Spring Gala:

Three days of heritage fun with visiting engines, model layouts and miniature train rides. Info : fairbournerrailway.com

Bermo Fest: Two days of live music and DJs on the Prom, 8-9 May 2026.

Barmouth 10k: One of the UK's most scenic runs, starting and finishing on the harbour and crossing the iconic bridge. 13 June 2026, to enter visit barmouthstriders.niftyentries.com

Carnival: Floats, fancy dress and family fun, parading along the High Street and Prom 13th June (after 10K race).

Water Fest: Raft races, sandcastle competitions, tug of war and beach games. Saturday 20th June.

Food Festival: A growing favourite, showcasing stalls of local food and drink, 5th July 2026

Barmouth Walking Festival: Ten days of guided walks graded A to C, exploring mountains, coast and local history. 12 - 21st September 2026. See more at barmouthwalkingfestival.co.uk

Motocross: Motorbikes and quads race across Barmouth's vast sands, usually in October each year. For 2026 details, see barmouth-wales.co.uk/events

Bonfire Night: Weather permitting, the beach bonfire and fireworks are a spectacular sight and a popular occasion. Accommodation books up well in advance, so it's worth planning ahead. 7th November 2026

CHRISTMAS

For a small town, Barmouth really shines at Christmas. The festive lights are impressive, shop windows sparkle, and the **Late Night Shopping and Christmas Lights Switch-On** brings the whole town together on 3rd December.

The Tractor Run passes through Barmouth each year, creating a unique and impressive seasonal spectacle. 13th December 2026.

Scan QR code for up to date details of events



HISTORY & NOTABLE PEOPLE

Little is known about Barmouth's earliest history, though high above the town lies an ancient hill fort - **Dinas Oleu**, the "Fortress of Light"

By the 1700s Barmouth had grown into a thriving boat-building centre. Between 1770 and 1790, 138 vessels were launched on the river, supported by the wool trade, which relied on water transport. Shipbuilding around Cardigan Bay was also driven by the slate trade with London, but as Porthmadog developed into a major port, it overtook Barmouth and the industry here declined.

In the Victorian era Barmouth reinvented itself as a seaside resort. Visitor numbers grew rapidly, with some settling permanently and leaving a lasting mark through their ideas, donations and civic improvements. The arrival of the railway in 1867 sparked a major building boom, and many town centre landmarks date from this period. The influx of visitors brought problems as well as benefits and the small round lock-up, **Tŷ Crwn**, was built during this period.

The two large churches, **St David's** and **St John's**, were built during this period to serve the growing community and its visitors. Many of the guest houses and hotels also date from this era, and together these elegant Victorian buildings remain central to Barmouth's character.

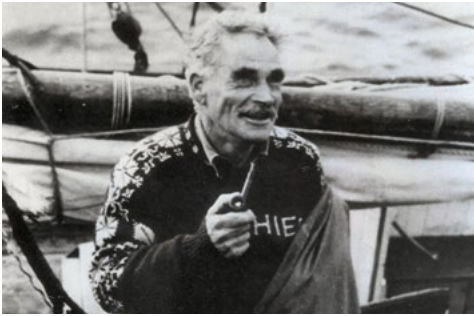


By the late 19th century the expanding rail network brought thousands of factory workers from the Midlands on summer specials. Wide beaches, mountain walks and a mild climate quickly gave Barmouth a loyal following, with many returning year after year.

To discover more, visit St John's Church, home to the **Barmouth History Project**. It explores farming, maritime trade, the arrival of the railway, tourism and local myths. All information also available at www.hanes-barmouth-history.cymru

HAROLD WILLIAM TILMAN

Bill Tilman (1898–1977) was a soldier, explorer, climber, and sailor. He served in the First World War, twice awarded the Military Cross. In the 1930s he became a leading Himalayan explorer, making the first ascent of Nanda Devi. He served with distinction in WWII special operations and in later life sailed his cutter *Mischief* on bold Arctic and Antarctic voyages. He lived in Barmouth in the 1960s and 70s, serving as president of the RNLI.



POETS

According to legend, anyone who spends a night on Cadair Idris will wake as a poet, a madman, or not wake at all. True or not, Barmouth has long inspired writers.

Celebrations in 2025 marked 150 years since **Gerard Manley Hopkins** visited and wrote a poem in the visitors' book at the George III in Penmaenpool. A Jesuit retreat still remains at Llanaber, offering rest and contemplation above Cardigan Bay, a fitting link to Hopkins, who was himself a Jesuit priest.

Centuries earlier, around 1330, **Dafydd ap Gwilym** stayed at the inn of Bwlch y Goedleoedd (now a ruin on Panorama Road) and wrote *Maddeunant*, which mentions Abermaw. **Alfred, Lord Tennyson** also visited in 1812, composing part of *In Memoriam* and recording his sense of

peace in the landscape. Other literary visitors have included **John Ruskin**, **Samuel Taylor Coleridge**, **Anna Seward**, **William Wordsworth** and **Percy Bysshe Shelley**.

MRS PERRINS

The Perrins family of Lea & Perrins Worcestershire Sauce fame owned a holiday home in Barmouth and donated generously to the town. One of Mrs Perrins' lasting legacies was the building of St John's Church - sometimes affectionately referred to as the "Worcestershire Sauce Church."

HAROLD LOWE

The 5th Officer on the *Titanic*, Harold Lowe was at school in Barmouth when he ran away to sea in 1896, aged just 14. On the night of the disaster he showed remarkable bravery, organising a group of lifeboats so that his own was kept clear to return for survivors, one of only two boats to do so. A plaque in his honour can be seen on the wall of the Harbour Master's Office.

FANNY TALBOT

The wealthy landowner and philanthropist Fanny Talbot was a friend of the founders of the National Trust. On 29 March 1895 she gifted 4.5 acres of land above Barmouth to the Trust, the very first property it ever owned. Talbot Place in the town still bears her name.





THE HARBOUR & BARMOUTH BRIDGE

Barmouth still has a working harbour, and **GW Barnish Shellfish** is the town's only active fishing business, landing fresh catch most days for local restaurants and visitors.

Expect lobster, prawns, spider crab and brown crab, straight from Cardigan Bay. Call Glen Barnish on 07956 651 732 to order and collect from the quay.

No visit to Barmouth is complete without a walk across the iconic bridge and historic viaduct.

This half-mile steel viaduct and timber railway bridge carries walkers, cyclists and motorbikes across the Mawddach Estuary, offering some of the finest views on the Welsh coast. Please share the space with care, keep dogs on leads and don't forget to pay the **Toll Troll** at the toll hut for your crossing!



Tŷ GWYN & THE BRONZE BELL MUSEUM

One of Barmouth's oldest and most intriguing buildings, **Tŷ Gwyn**, has watched over the harbour for centuries.

Tradition links the house to the Wars of the Roses, when it is said to have served as a discreet landing place and safe refuge for supporters of Henry Tudor before his victory at Bosworth in 1485.

The poet Tudur Penllyn described it as "the half of which is in the waves", and although its exact origins are uncertain, the building has certainly had many lives - possibly a customs house, later a school and store, and eventually homes and businesses.

Today the building houses the Davy Jones Locker café on the ground floor and the museum is situated above. The displays include artefacts from the wreck

of an Italian ship lost nearby around 1709, alongside photographs and stories of Barmouth's seafaring past. Run by volunteers, the museum is usually open most afternoons in season (1-4pm), with visits outside the season possible by arrangement.

More information available online, look for Point 7 on the Heritage Trail barmouth-wales.co.uk/heritage-trail



THE SAILORS' INSTITUTE

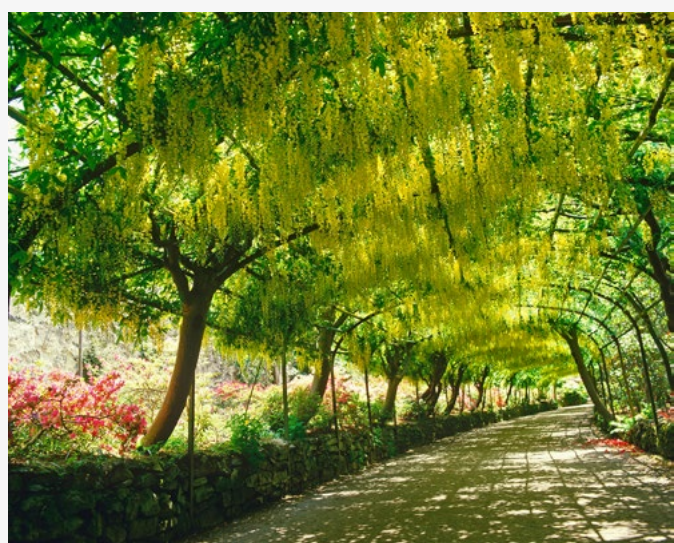


On the harbour, **The Sailors' Institute** is a rare survivor from the age of sail. Founded in 1890, it gave local families a place to follow the voyages of Barmouth seamen when they were away at sea for months, sometimes years.

Today the Victorian reading room is open to visitors and displays photographs, sea charts and maritime artefacts that tell the story of the town's seafaring past. Lovingly restored by volunteers, it is a charming place to discover maritime history. Learn more at www.barsailinst.org.uk



DAYS
OUT



EXPLORE BY TRAIN

Whether you want to walk, cycle, discover history or simply enjoy the stunning scenery of Cardigan Bay, why not leave the car behind and take the train?

Walk: Head south to Llwyngwril and follow the coast path back to Barmouth, finishing with a crossing of the iconic Barmouth Bridge. Or travel north to Talybont and return on the Arduwy Way, where the views over the bay and Llŷn Peninsula are unforgettable. Several stretches of the Welsh Coast Path are accessible by train, just check the timetable to make sure you can get back again.

Cycle: Take the train to Porthmadog and ride the National Cycle Route 8 back to Barmouth. The hills around Harlech are a challenge, but the scenery more than rewards the effort.

History & Heritage: By train you can reach [Harlech](#) and [Criccieth](#) castles, or travel to Machynlleth, site of the first Welsh Parliament. Be prepared for a fair walk from the stations to each site.

Scenery: The whole line from Machynlleth to Pwllheli is breathtaking, often listed among the world's most scenic rail journeys. Check the timetable and plan a return trip, perhaps stopping off in Aberdyfi or Criccieth for lunch.

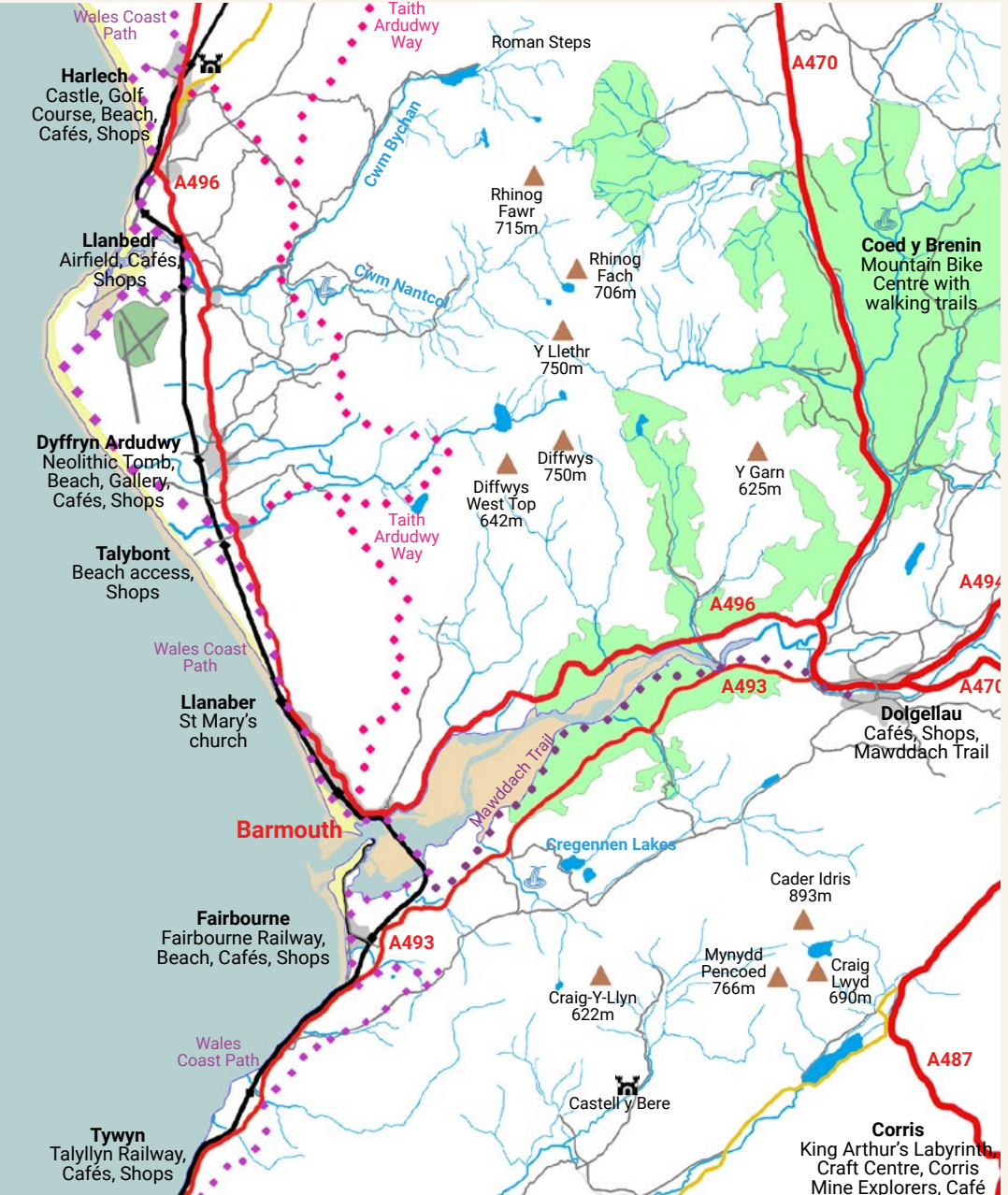
EXPLORE BY CAR

Castles: Discover the turbulent history of Wales through its castles. The native Welsh strongholds are often smaller, set in varied landscapes and developed over centuries. In contrast, the English castles were built in a short burst of power, designed to dominate the skyline and remind the Welsh who had won. Many now feature interpretive displays and host special events during the holiday season.

Gardens: Wales may be known for its rain, but the reward is a wealth of spectacular gardens, from intimate hideaways to vast collections bursting with colour. Just 19 miles up the coast lies the fantasy Italianate village of [Portmeirion](#), with formal gardens, eclectic buildings, and woodland sweeping down to the sea. Created by Sir Clough Williams-Ellis, it is complemented by his home garden at [Plas Brondanw](#), a smaller, more intimate space with elegant topiary and striking views into Snowdonia. Further afield, [Bodnant Garden](#) near Conwy is a must for garden lovers. Spread over 80 acres, it features rose terraces, an acer wood, the dramatic Dell with the river Hiraethlyn, colourful shrub borders and a winter garden. Visit in spring for dazzling displays of rhododendrons and azaleas in full bloom.

Art: If you enjoy exploring art, [Oriol Plas Glyn-y-Weddw](#) is Wales's oldest art gallery, set in a striking Victorian Gothic mansion at Llanbedrog, with exhibitions that change throughout the year, plus a café, shop and woodland walks to complete the visit.

LOCAL AREA & PUBLIC TRANSPORT

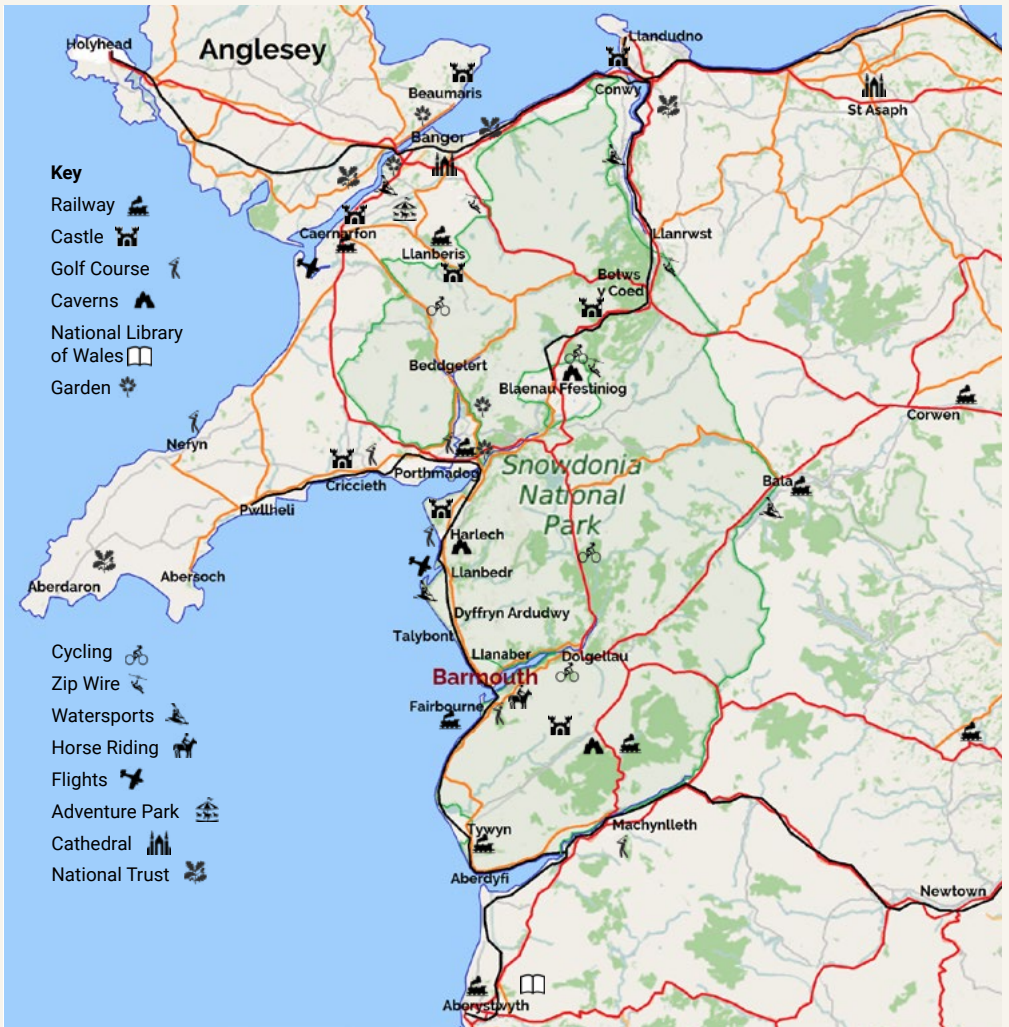


Exploring by public transport lets you sit back and enjoy the scenery rather than concentrate on the road.

From Barmouth the Cambrian Coast Line follows the shoreline south through Tywyn and Aberdyfi to Machynlleth, then continues to Shrewsbury via Newtown and Welshpool, with a connection at Machynlleth for Aberystwyth.

Heading north, the railway runs towards Pwllheli, stopping at Harlech, Minffordd (for Portmeirion), Porthmadog and Criccieth.

Local buses also link Barmouth with Porthmadog and Wrexham via Dolgellau, Bala and Llangollen, and from Dolgellau you can connect onwards to Caernarfon and Bangor.



Barmouth walking festival
 GWYL GERDDED ABERMAW

Medi
 12 - 21
 September
 2026

10 days of
 guided group
 walks for all
 abilities and
 ages in
 stunning Eryri
 (Snowdonia)

www.barmouthwalkingfestival.co.uk

WALKING & HIKING

Whether you're after a gentle stroll between coffee and lunch or a full day adventure in the hills, you'll find plenty of choice around Barmouth. Each September the popular **Barmouth Walking Festival** offers around 30 guided walks over 10 days. Walking leaflets are available at the Tourist Information Point with some short local walks and you can download the **OutdoorActive app** for further routes in the area.

EASY WALKS

● Walk or drive up Panorama Road to the car park and take a short walk to the viewpoint for stunning panoramic views of the estuary, mountains and sea.

● Take the bridge across the estuary and follow the coast path around to the Fairbourne Railway. There take a trip on the steam train and return to Barmouth via the ferry (in season) or the mainline train.

● Walk up from Town, initially following the Arduwy Way. At the abandoned farm turn left, left again in the woods and emerge at "The Peak" with cairn and flag for great views of Barmouth.

● For a slightly more strenuous walk, follow the Arduwy Way to Gellfawr farm, then turn right, down past the Slabs and follow the footpaths back down to Barmouth via the 100 steps. It's steep!

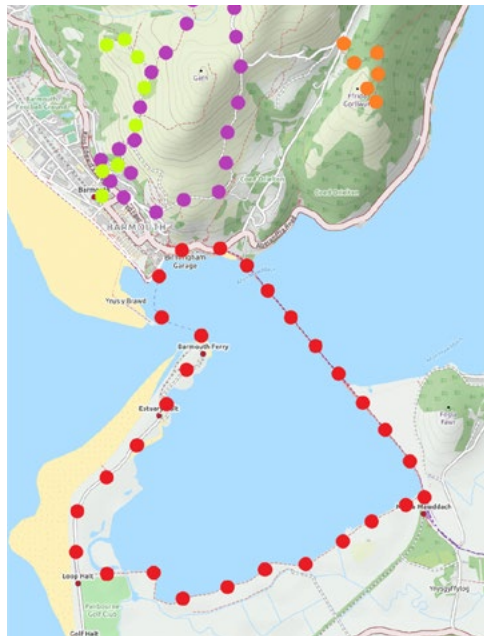
MODERATE WALKS

Follow in the footsteps of Julia Bradbury and walk the Mawddach Trail between Dolgellau and Barmouth along the old railway line. This is a flat 10 mile walk along the estuary. Take the bus to Dolgellau to start, (or get the bus back). If the full 10 miles is too much, cross the toll bridge by the George III pub and catch the bus back to Barmouth.

HARDER WALKS

Map
on page
36

The Mawddach Way is a three day, 50km walk which uses existing footpaths to make a circuit of the hills either side of the Mawddach estuary. Taith Arduwy (the Arduwy Way) is a well signposted upland pathway of 24 miles from Barmouth to Llandecwyn. Shorter sections can be done using the train or bus to get you back to where you started. Barmouth is on the Wales Coast Path, and the Cambrian Way for those looking for a longer expedition. See walescoastpath.gov.uk



RUNNING

Barmouth is a fantastic destination for runners. Whether you prefer the flat routes of the promenade and the Mawddach Trail or the challenge of the surrounding hills, there's something here for everyone.

Y Promenâd parkrun, Abermaw is a free, weekly community event where you can walk, jog, run, volunteer or spectate. The 5k run takes place every Saturday morning along the promenade, starting opposite the lifeboat station. It's positive, welcoming and inclusive. There's no time limit, and no one finishes last. Parking is available nearby, and toilets are open at the railway station. Other parkruns close by include Dolgellau (named by BBC Countryfile as one of the most beautiful in the UK) and Pont y Bala. Find out more at: parkrun.org.uk/ypromenadabermaw



Santa Dash: This is a 2-mile fun run along the Prom and back. Tickets are available online and include a Santa suit, goodie bag and medal. To enter, visit barmouth-wales.co.uk/events

Barmouth 10k: Held each June, this race is fast becoming a Barmouth institution, and one of the most scenic runs in the UK. The route starts and finishes on the



harbour and crosses the iconic Barmouth Bridge. More info at barmouthstriders.niftyentries.com

Hurly Burly: Swim one of the UK's wildest and most breathtaking routes. Starting on Barmouth's sandy beach, the course passes beneath the bridge and rides the fast incoming tide upstream to The George III, Penmaenpool. 12 Sept 2026. Info: levelwater.org/hurlyburly

Sea2Sky: From Barmouth beach to the summit of Cadair Idris and back, with a choice of 25k or 53k courses. Info: runthroughtrails.com/snowdonia-sea-2-sky

Ras y Gader (Cadair Idris mountain race) is one of the toughest fell races in Wales and a classic "must-do" in the running calendar. Starting and finishing in Dolgellau, the route climbs nearly 3,000ft from sea level to the summit of Pen y Gader.

Both the Talylyn and Fairbourne Railways host "**Race the Train**" events, check their websites for details.

At **Coed y Brenin** you will find waymarked trails designed for all abilities. They range from short novice routes to longer challenges. **Run Coed y Brenin** also organises events throughout the year, including a half and full marathon in June. See runcyb.com

CYCLING

Barmouth has plenty of options for cyclists locally. The town sits on the National Cycle Network, with Route 8 running through. For those tackling the full length from Holyhead to Cardiff, Barmouth makes a convenient stop at the end of the first day. Scan the QR code for a detailed online map.

Coed y Brenin: A nationally recognised mountain biking centre with eight routes ranging from family friendly to black. There's also a training area for all levels, from beginner to expert, where you can test yourself before hitting the trails.

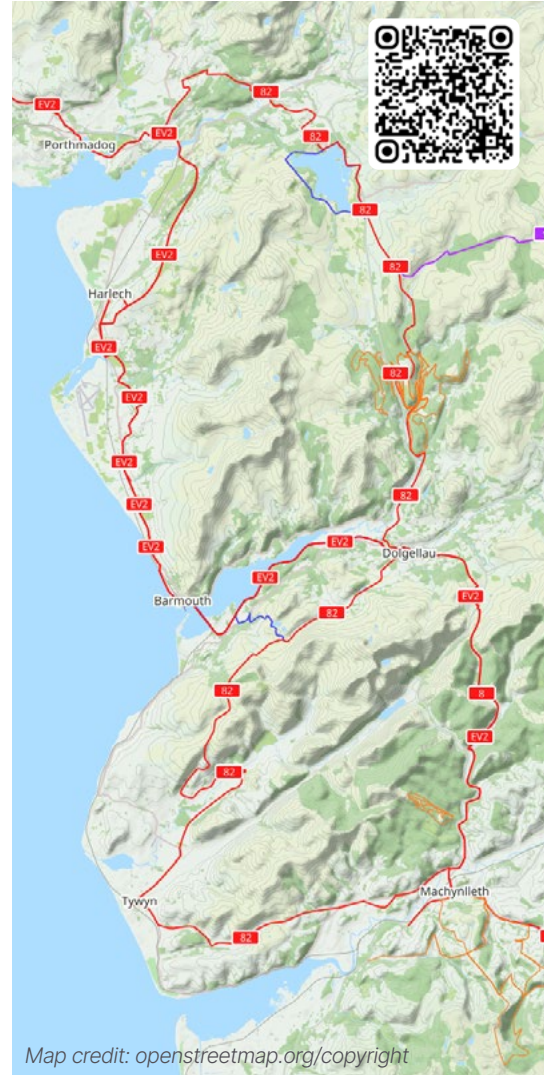
Antur Stiniog: A dedicated downhill centre offering 14 trails from green to black. An uplift service takes you to the top. Getting down is up to you! Facilities include showers, bike wash, café, hire, shop, and repair centre. Visit anturstiniog.com for info

National Cycle Routes: Following Routes 8 and 82 you can ride a 60 mile loop north or south of Barmouth to explore southern Snowdonia. These routes follow quiet roads or paved paths, though be prepared, there are some serious hills along the way! See more at sustrans.org.uk



Dyfi Forest: Further afield, this cycle centre features Climachx, the longest descent in Wales. This red/black run starts north of Machynlleth, climbs into the hills around Corris, and finishes with a thrilling descent.

Beddgelert Forest: For a gentler approach, this forest offers a couple of trails ideal for less experienced riders, with the added reward of fantastic scenery.





WHERE TO STAY

Barmouth offers a wide variety of places to stay: self-catering cottages and flats, camping and caravan sites by the sea or in the countryside, family-friendly B&Bs on the prom or tucked away in the hills, as well as guest houses and hotels for every budget.

Whether you're looking for ground floor rooms, breakfast included, pet friendly options, family rooms or even a hot tub - you'll find them all in Barmouth. Be sure to check with your accommodation provider before booking if you have any specific requirements.

Hawen ★★★★ Self Catering 



Hawen is a 3 bedroom apartment on the edge of the town centre.

It is near to the bowling green, children's play park and 300m from the beach.

Quiet location with private parking nearby.

3 bedrooms
Sleeps 5
Short breaks available

Victoria Place, LL42 1PR
www.BarmouthHoliday.wales

Sunnybank 07766 578 545



Two bedroom maisonette in a prime location 50 yards from the beach. Close to the harbour, restaurants, cafés and shops.

Well situated for many scenic walks, including Barmouth bridge, Panorama Walk and Aberamffra. 11 miles from Coed y Brenin. Ideal for families, walkers and cyclists.

Free parking on the forecourt of the property. Additional parking available in the car park opposite.

Two bedrooms (one double, one twin) with a cot available if required. Spacious throughout and fully equipped for a comfortable, relaxing stay - a real home-from-home.

2 bedrooms
Sleeps 4 + cot

Church Street, LL42 1EF
barmouth-holidaylets.co.uk
ask@barmouth-holidaylets.co.uk

Penbryn Mynach 07971 475 111



Fully renovated large Victorian house overlooking Wern Mynach in Barmouth.

Peaceful yet convenient location, with spacious living areas, three en-suites and a family bathroom. Small-party reductions and short breaks available.

6 bedrooms
Sleeps 12 + cot
£1000 - £2000 per week

Llanaber Road, LL42 1RF
penbrynmynach.co.uk
robertpullan@gmail.com

Two bedroom maisonette in a prime location 50 yards from the beach. Close to the harbour, restaurants, cafés and shops.

Well situated for many scenic walks, including Barmouth bridge, Panorama Walk and Aberamffra. 11 miles from Coed y Brenin. Ideal for families, walkers and cyclists.

Free parking on the forecourt of the property. Additional parking available in the car park opposite.

Two bedrooms (one double, one twin) with a cot available if required. Spacious throughout and fully equipped for a comfortable, relaxing stay - a real home-from-home.

2 bedrooms
Sleeps 4 + cot

Church Street, LL42 1EF
barmouth-holidaylets.co.uk
ask@barmouth-holidaylets.co.uk

SELF CATERING

Sea Breeze Apartment 07973 952 929



Seafront apartment in the heart of Barmouth

Sea Breeze Apartment in Albion House is a beautifully presented, fully refurbished ground floor apartment with sea views and outdoor seating areas. It is one of just four apartments in a recently renovated Victorian seafront building.

Ideally located in the heart of Barmouth, with roadside parking available outside, Sea Breeze offers a double bedroom, a fully equipped kitchen area and a good-sized lounge featuring a bay window with seating to enjoy the views. Short breaks available, minimum stay 2 nights.

1 bedroom, Sleeps 2
£80 - £150 per night
airbnb.com/seabreezeapartmentbarmouth

Marine Parade, LL42 1ND
geoffd.williams@me.com

Beautiful Wales



Luxury, seaside, rural holiday barns on equestrian property.

Amazing sea views and sunsets. Short walk to the Welsh Coastal Path, sandy beaches and Barmouth Promenade.

Private parking. Dogs welcome (max 2 dogs). Superfast WIFI.

Penty Bwch sleeps 2
Penty Mochyn sleeps 4
1-28 day breaks

Llanaber, LL42 1YS
www.BeautifulWales.co.uk
Jan@BeautifulWales.co.uk



Bryn Melyn Apartments

07398 426 468

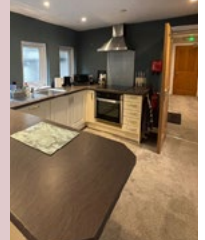
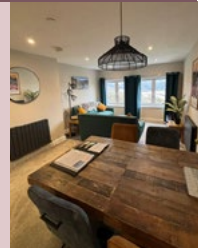


Enjoy spectacular views from our three beautiful holiday apartments, set in peaceful natural surroundings yet just a short walk from the town centre with its shops, cafés and restaurants.

An ideal base for walkers, cyclists and outdoor adventurers, with fantastic trails and scenery right on the doorstep.

We also offer electric bike hire, plus private parking and an EV charging point for your convenience.

The perfect place to relax, explore and experience nature.



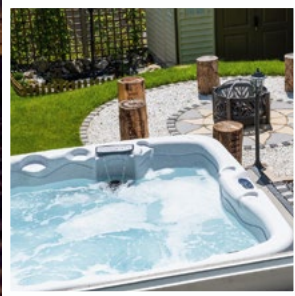
1 or 2 bedrooms, Sleeps 2 or 4
Short breaks available

brynmelyn.co.uk
info@brynmelyn.co.uk



www.lounge-holidays.co.uk

We have a wide choice of self catering holiday homes in and around Eryri/Snowdonia National Park. Call us or visit our website today to plan your holiday in this beautiful part of Wales.



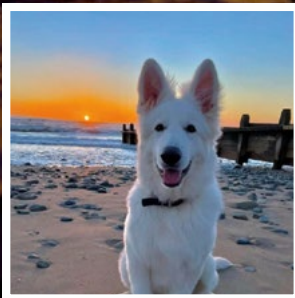
Hot Tub



Sea View



Large Homes



Pet Friendly



Rural/Retreats



Mobility Friendly

Phone: 01654 710533

Email: theteam@lounge-holidays.co.uk

Main office : 9 College Green, Tywyn LL36 9BS

SELF CATERING

Holibobz - Luxury Accommodation

High Street



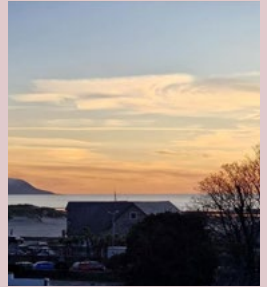
Two luxury holiday homes in the beautiful seaside town of Barmouth

Glan y Werydd House, an elegant four bedroom period home with stunning sea views.

The Penthouse, a chic New York loft style hideaway, with scenic coastal and Welsh mountain vistas.

Both of these award-winning properties are perfectly placed on the High Street, just moments from golden sands, sea breezes, boutique shops and restaurants, and coastal and mountain walks.

Enjoy complimentary parking, luxury toiletries, high-speed Wi-Fi, Welsh tea and coffee with a teatime treat. Early bag drop and left-luggage service makes this a truly effortless coastal escape.



Glan y Werydd House: 4 bedrooms, sleeps 8
The Penthouse: 1 bedroom, sleeps 4

barmouthholidays.wales
relax@barmouthholidays.wales

The Belmont

07968 387 484



The Belmont Barmouth, luxury group stays by the sea 5 Star Visit Wales graded | Sleeps up to 18

Set on Barmouth's iconic seafront, The Belmont is a beautifully restored Art-Deco house offering luxury group accommodation in North Wales.

With nine distinctive bedrooms, generous communal spaces, and all-weather entertainment - including a private cinema and games room - it's the perfect setting for celebrations, reunions, and relaxed coastal escapes all year round.

★★★★★
Self Catering

9 bedrooms, Sleeps 18 Marine Parade, LL42 1NA
Min stay 3 nights thebelmonthbarmouth.co.uk
Pet friendly contact@thebelmonthbarmouth.co.uk

Ty Newydd

★★★
Self Catering



Cosy, first floor one bedroom flat in Old Barmouth.

Open plan kitchen/lounge with a modern shower room. This flat is close to the harbour and town facilities.

1 bedroom
Sleeps 2
Short breaks available

Gibraltar Lane, LL42 1DB
www.BarmouthHoliday.wales

Wynnstay Apartments 07789 036 600



Excellent harbour-side apartments with views to the sea, the Mawddach estuary and the iconic Barmouth Bridge.

Close to cafés and restaurants, and within a short walk to the High Street shops, pubs and varied facilities.

Short breaks available, min 3 nights.

1 or 2 bedrooms
Sleeps 2 or 3
From £500 per week

Barmouth Harbour, LL42 1HB
wynnstayapartments.co.uk
martinandjo@thewynnstay.com

SELF CATERING / CAMPING & CARAVANS

Minafon Cottage

01654 710 533



Nestled in a stunning coastal setting and boasting breathtaking sea views with the mountains as a dramatic backdrop, this cottage offers the perfect blend of charm and comfort.

Just five minutes drive from Barmouth town centre with its wonderful independent shops, pubs and eateries.

Spacious and well equipped for a relaxing stay, guests can enjoy off-road parking, free Wi-Fi, and a dog-friendly welcome. Don't miss our spectacular sunsets and special seasonal offers!

3 bedrooms, Sleeps 6 Llanaber, LL42 1YS
 From £450 per week theteam@lounge-holidays.co.uk
 Short breaks available
lounge-holidays.co.uk/properties/minaфон-sea-view-cottage

Pandy

01341 242 626



A former fulling mill, completely renovated and refurbished to a very high standard, finished and furnished throughout in oak.

Four bedrooms - all en-suite. Lounge containing wood burner. Fully fitted, luxury kitchen, double oven, double fridge, dishwasher etc. Full central heating throughout.

Washing machine, tumble dryer and freezer in utility room. All linen, towels, fuel, electricity and logs included in price. Free WiFi.



4 bedrooms, Sleeps 7 + cot Talybont, LL43 1AD
 From £970 per week rowenpark.com/farmhouse
 Sorry - no pets holidays@rowenpark.com

Hendre Mynach Touring Caravans & Camping Park 01341 280 262



Hendre Mynach is a premier site only 100m from the lovely, safe and sandy beach and approximately 25 minute level stroll to Barmouth town centre, making it the closest site to Barmouth.

Enjoy our touring and camping pitches or choose from a range of holiday rentals to suit everyone - from cosy Shepherds Huts and Camping Pods to luxurious Deluxe Pods, hassle-free Static Caravans, and our beautifully adapted Holiday House for up to eight guests. Perfect for families, couples, and pets, our park offers the ideal base to explore the stunning surrounding area.

Visit our website to check availability and book online.



60 Caravan pitches
 180 Camping pitches
 Open Mar - Jan
 Spring & Autumn
 Special Offers
 available



★★★★★

Touring & Camping Park

info@hendremynach.co.uk · hendremynach.com

Llanaber Road, LL42 1YR

Dyffryn Seaside Estate

Carefree holidays for all the family ...



A warm welcome to Dyffryn Seaside Estate, beautifully situated next to an award winning beach within the Snowdonia National Park.

We have a range of accommodation options for you, whether you want to hire one of our quality bungalows, or static caravans, or bring your own touring caravan or camping equipment.

Our 4 & 6 berth bungalows or caravans offer a modern, well equipped home from home. The camping/touring site is level and spacious, with water and electric supplies available.



On-site facilities include:

- ◆ Restaurant & Bar
- ◆ Coffee Shop & Takeaway
- ◆ Children's Play Area
- ◆ Laundrette & Shop

Leisure Complex with:

- ◆ Indoor Heated Swimming Pool
- ◆ Spa Bath
- ◆ Sauna
- ◆ Steam Room

Holiday Homes for Sale

Open March - October

01341 247 220



★ ★ ★

Holiday & Camping Park

Dyffryn Ardudwy, LL44 2HD
dyffryn-seaside-estate.co.uk
info@dyffryn-seaside-estate.co.uk

CAMPING & CARAVANS

Rowen Caravan Park 01341 242 626



Situated approx. 4 miles from Barmouth, this small, quiet family park caters for families and couples.

Situated in a tree-lined meadow beside a small stream, it is a short stroll away from Talybont village and the beach.

The two- and three-bedroom caravans and lodges are all central heated and equipped to a very high standard.

We have a launderette on the park, also WiFi for a small additional fee (proceeds to Wales Air Ambulance).

Open April - October
18 Caravans and lodges

Talybont, LL43 2AD
rowenpark.com
holidays@rowenpark.com



Trawsdir Touring Caravans & Camping Park

01341 280 999



Trawsdir is a 5 star Touring and Camping Park located in Snowdonia National Park in an area of outstanding natural beauty. Voted AA Campsite of the Year Wales 2019, Trawsdir overlooks Cardigan Bay and the impressive Llyn Peninsula, and boasts some of the most stunning scenery in the country.

Approximately 3 miles from Barmouth, Trawsdir offers fully serviced touring pitches capable of taking American RVs, camping with and without electric pitches, family glamping pods that sleep up to 5, and seasonal pitches.

Dylan's Restaurant which is just a short walk away offers a great variety of food and drink choices with fabulous sea views.

Advance booking required, especially at peak times.

Disabled facilities and dog friendly. Open over Christmas and New Year. Free Wi-Fi available throughout the park.

- | | |
|-------------------------|----------------------|
| • Showers & toilets | Open March - January |
| • Hairdryers | 65 Touring pitches |
| • Launderette / ironing | 75 Camping pitches |
| • On-site shop | 10 Glamping pods |



★★★★★

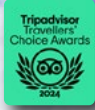
Touring & Camping Park

Llanaber, LL42 1RR
enquiries@trawsdir.co.uk · barmouthholidays.co.uk

SERVICED ACCOMMODATION

Aber House B&B

01341 429 145
07308 353 440



Steve and Tracey offer you a warm welcome. Centrally located to the harbour, beach, shops, restaurants and the train station.

Breakfast and free onsite parking is included. Separate dog friendly annex available.

Contact us directly as we do not use a booking agent. Minimum stay is 2 nights.

B&B from £120 per room High Street, LL42 1DS
5 rooms aberhousebarmouth.co.uk
Open All Year talbot.barmouth@outlook.com

Ocean Drive

01341 280 114



Ocean Drive is a friendly, comfortable guest house ideally located opposite the golden sands of Barmouth Beach, at the edge of Snowdonia National Park.

Glenn and Sarah extend a warm welcome. We are cyclist and walker friendly.

Come and try our delicious breakfasts and daily breakfast specials.

Open Feb - Nov 5 Marine Parade, LL42 1NA
oceandrivebarmouth.co.uk
enquiries@oceanrivebarmouth.co.uk

The Royal

01341 213 992



The Royal is a welcoming, family and dog friendly pub. Located in the centre of Barmouth, it is just a short walk from the beach, shops and railway station.

On the first and second floors there are ten, beautifully decorated en suite guest rooms. On the lower floors you can enjoy the lively atmosphere of a traditional local pub, serving delicious ales and pub grub.

Yvonne, Mark and the team look forward to seeing you!

For the best rates book direct. Open all year.

10 rooms, all en-suite King Edward Street, LL42 1AB
Open All Year theroyalbarmouth.co.uk
Dog Friendly contact@theroyalbarmouth.co.uk

Min y Mor Hotel

01341 280 555



The Min Y Mor seafront Hotel, restaurant, bar and beer garden (with Children's play area) offers a great place to escape and unwind, whether you want to relax, explore the sights, eat and drink, cycle or walk, we offer the perfect base.

26 bedrooms ranging from singles to family, all en-suite. Private large car park. All direct booking include breakfast and we also serve a great range of food in the evening. With daytime meals being taken care of by our outside grill. We have a well stocked bar, and fantastic outside area to watch the sunset over the sea.

Open All Year Marine Promenade, LL42 1HW
26 rooms, all en-suite www.minymor.com
Dog friendly info@minymor.com

SERVICED ACCOMMODATION

Môr Wyn Guest House 01341 280185



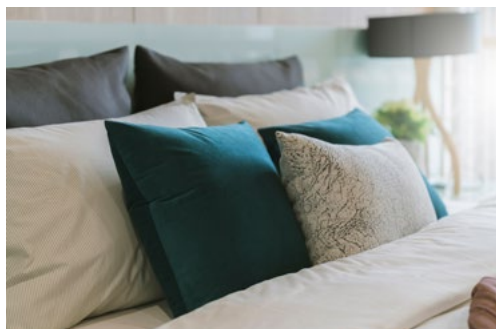
A small friendly family run guest-house at the far end of Marine Parade.

Closest guest house to the beach. Light spacious rooms, all equipped with colour TV and hospitality tray.



5 rooms
All ensuite

Marine Parade, LL42 1NA
barmouthguesthouse.com



No6 Porkington

07470 874023



Situated on the North Wales Gwynedd coast, No.6 is an elegant building overlooking the historic Barmouth Bridge stretching over the magnificent Mawddach Estuary with the beautiful backdrop of the Cadair Idris mountains behind.

On the edge of the stunning Snowdonia National Park, No.6 is a magical location for couples, families and friends to explore and restore!

Three elegant suites, B&B from £140 per room

Open All Year
3 Suites
From £140

Porkington Terrace, LL42 1LX
no6porkingtonterrace.co.uk
brad@no6porkingtonterrace.co.uk

Acknowledgements

Barmouth Town Guide is produced by the Barmouth Publicity Association, a voluntary organisation dedicated to promoting the town and surrounding area.

We are sincerely grateful to the many local businesses whose advertising makes the publication of this guide possible. By supporting the Guide, they help provide a free resource for visitors and residents alike and contribute directly to the promotion of tourism within the community.

We would also like to thank all the photographers and contributors who generously gave their time, supplied images and information, enabling us to present Barmouth at its best. If you would like your business to be included in the next edition of this guide, please get in touch with the team.

info@barmouth-wales.co.uk
www.barmouth-wales.co.uk

Photo credits:

Cover illustration: Sharon White
Page 20: Corris Mine Explorers
Page 20: Visit Wales Crown Copyright
Page 23: South Snowdonia Search & Rescue
Page 28 : Santa Dash by Llinos Furneaux
Page 40 : Su Cartwright
Pages: 2, 5, 7, 13, 21, 23, 25, 32, 33, 42, 43
by Dominic Vacher

Licensed Images:

Some images in this publication have been reproduced under commercial license by Adobe Stock.

Disclaimer: Every effort has been made to ensure that the information contained within this publication is accurate at the time of going to print. However, details such as opening times, prices and services may change and Barmouth Publicity Association cannot accept responsibility for any errors, omissions or subsequent alterations. Printed in Wales, © Barmouth Publicity Association.

The inclusion of businesses, organisations or services in this guide does not constitute a recommendation, and visitors are advised to contact individual providers directly to confirm current information before making arrangements.



www.lounge-holidays.co.uk

Worried about the second home taxation in Wales?

With over 15 years of experience, we're a trusted local company specialising in the full management and maintenance of holiday lets.

WE OFFER

- ✓ Competitive commission rates
- ✓ Global online advertising for maximum exposure
- ✓ Comprehensive, hands-off management service

Let us handle everything - so your guests enjoy a flawless stay, and you have total peace of mind.

MWT  CYMRU
MID WALES TOURISM EST. 1991

 PASC
www.pascuk.co.uk

Call our friendly team on 01654 710533
for a no-obligation assessment.
theteam@lounge-holidays.co.uk

King Arthur's Labyrinth
CORRIS

A MAGICAL WATERFALL
INTO THIS UNDERGROUND
STORYTELLING
ADVENTURE

Only 30 mins
from Barmouth

www.kingarthur.wales

RHEILFFORDD
TALYLLYN
RAILWAY

Rain or shine,
a great day out!

STEAM TRAINS RUNNING DAILY
from 29th March to 1st November

BOOK ONLINE | Round trip = 2½ hrs

Licensed Cafés | Shop | Museum

Journey through the Fathew valley and see the living world through your carriage window, and the icing on the cake, the smell of steam and the whistle of the locomotive!

Explore the fascinating history of the Talyllyn Railway and its links to the slate quarry at Bryneglwys and the village of Abergynolwyn

THE RAILWAY WITH A HEART OF GOLD

www.talyllyn.co.uk
01 654 710472 | enquiries@talyllyn.co.uk
Gorsaf Wharf Station, Tywyn LL36 9EY

f y x i

Fairbourne
MINIATURE RAILWAY

Open Easter to October Daily in School Holidays
Closed Monday & Friday at other times

Kids
go for
£1

Take the Ferry from Barmouth Harbour & join the Railway to enjoy the magnificent views as you ride to Fairbourne

Tel: 01341 250 362 www.fairbournerailway.com

DRAGON THEATRE
JUBILEE ROAD
BARMOUTH

FILMS
MUSIC
DRAMA
COMEDY

theatr y ddraig