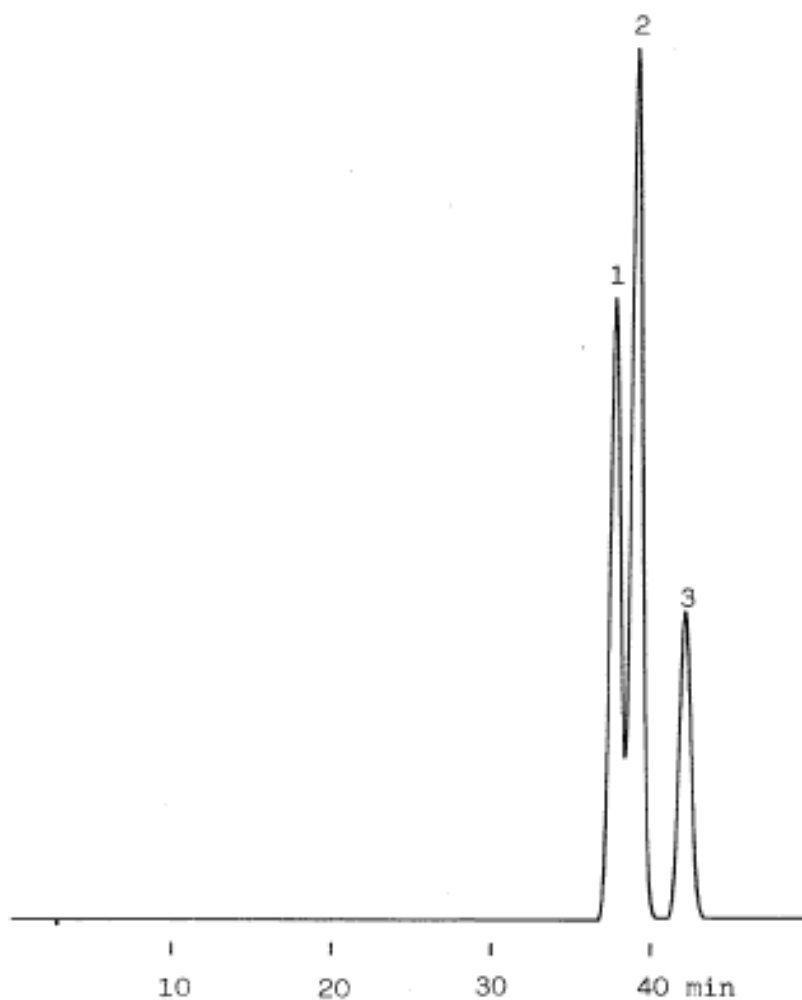


# InertSearch™ for LC

Inertsil® Applications

## Dinitrotoluenes

Data No. LA310-0000



Column : Inertsil ODS-2

5 $\mu$ m

250  $\times$  4.6 mm I.D.

Column Cat. No. : 5020-01102

Eluent : CH<sub>3</sub>CN/H<sub>2</sub>O=30/70

Flow rate : 1.0 mL/min.

Col. Temp. : 40°C

Detection : UV 254 nm

Injection Vol. :

Sample :

Solutes

: 1. 2,4-Dinitrotoluene

2. 2,6-Dinitrotoluene

3. 3,4-Dinitrotoluene