



MARKED SAFE



Are you marked safe?

MUNTINLUPA CITY'S DISASTER RISK REDUCTION MANAGEMENT

Transportation • Equipment • Early
Warning System • Resilience and Initiatives



MAKING MUNTINLUPA RESILIENT

The Department of Disaster Resilience and Management (DDRM) of the City of Muntinlupa provides a range of services, including both emergency and non-emergency assistance.

Along with these services, the DDRM formed a number of response teams tasked with mitigating the adverse impacts of disasters and executing recovery operations.

They are tasked to aid and safeguard the citizens of the city's nine barangays: Sucat, Buli, Cupang, Alabang, Ayala Alabang, Bayanan, Putatan, Poblacion, and Tunasan.



Photos from Muntinlupa City Department of Disaster Resilience and Management/Facebook



DDRM OF MUNTINLUPA ORGANIZED TEAMS

INCIDENT MANAGEMENT TEAM

In the event of a crisis, the team is in charge of organizing and coordinating the vital resources and developing a proactive response plan.

RDANA TEAM

The Rapid Damage Assessment and Needs Analysis (RDANA) Team is responsible for determining the magnitude of a disaster and its impact on the community.

The team also assesses the immediate relief and response in light of each aspect of the situation at hand.

WATER SEARCH AND RESCUE TEAM

This team is responsible for protecting lives endangered by flooding and other water-based incidents.

SEARCH, RESCUE, AND RETRIEVAL TEAM

Helping those who are in immediate danger is the responsibility of the Search, Rescue, and Retrieval (SAR) personnel.

It deals with locating, rescuing, and stabilizing individuals in confined spaces caused by a sudden structural collapse.

EMERGENCY RESPONSE TEAM

The Emergency Response Team (ERT) is a 24/7 response team that handles immediate assistance including medical emergencies, trauma, and obstetrics.

Every one of Muntinlupa City's nine barangays has an ERT besides the DDRM.

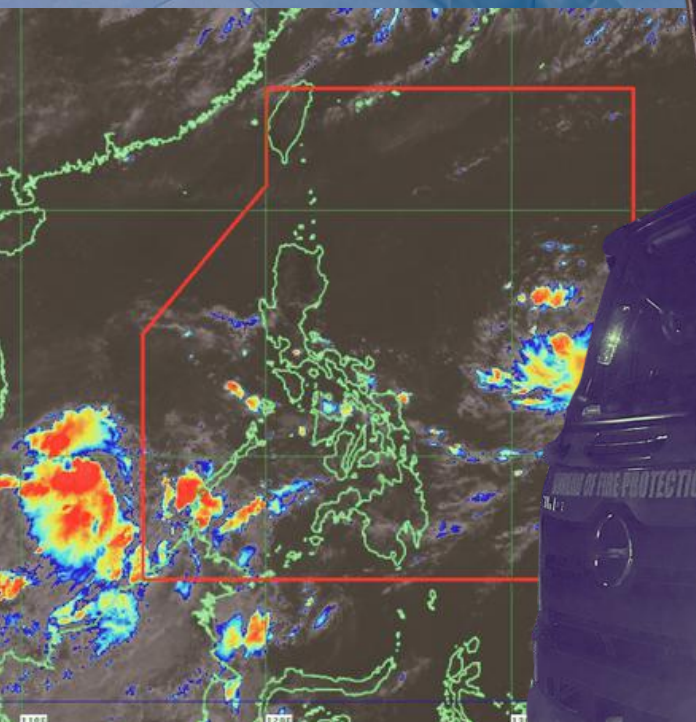
SERVICES

EMERGENCY ASSISTANCE

- Ambulance Transportation
- Medical Emergency Response
- Search, Rescue, and Retrieval
- Water Search and Rescue
- Fire Suppression

NON-EMERGENCY ASSISTANCE

- Disinfection Services
- Animal Rescue
- Extrication Services



Need help?
REACH MUNTINLUPA!

Telephone no.: 8925-4382

Emergency hotline: 137-175

Email: drmmomuntinlupa@gmail.com

Address: Resilience Building, Susana Heights,
Tunasan, Muntinlupa City

Facebook page: [Muntinlupa City Department of
Disaster Resilience and Management](#)

Are we prepared? **MUNTINLUPA IS!**

The DDRM of Muntinlupa City houses different types of equipment, transportation, and early warning systems for various anticipated disasters in the city in order to prepare, mitigate, and immediately respond to their adverse impacts.

Muntinlupa is equipped for the ‘Big One’ and floods for its flood-risk areas.

For every barangay, the DDRM of Muntinlupa City donated the following transportation units:

- 1 penetrator truck
- 2 fire trucks
- 1 water tanker
- 2 ambulances

But that's not all.

MAKING MUNTINLUPA EQUIPPED

EXTRICATION EQUIPMENT

Trained emergency responders utilize extrication equipment in disaster response to extract and move victims from the area.

Here is the list of extrication equipment the DDRM of Muntinlupa has:

- Glass management set
- Thermal imaging camera
- Jackhammers
- Rotary hammers
- Combi-tools
- Dedicated cutter tool
- Dedicated spreader tool
- SRR & extrication tools
- Reciprocating saw
- Chain saws
- Rescue saws

WATER SEARCH AND RESCUE EQUIPMENT

WASAR equipment is every rescuer's lending hand during times of search and rescue in calamities involving hazards in water such as flooding, overflowing rivers, rising sea levels, etc.

Here is the list of WASAR equipment the DDRM of Muntinlupa has:

- Portable rescue boat (3 available boats)
 - 1 portable boats distributed per 8 Coastal Barangays (Sucat, Buli, Cupang, Alabang, Bayanan, Putatan, Poblacion, Tunasan)
- Ondoy boat (2 available boats)
- Bulldog rescue boat (3 available boats)
- Baracuda rescue boat (1 available boat)
- Rescue boat outboard engines
 - 9 pcs - 5 horsepower
 - 1 pc - 15 horsepower
 - 2 pcs - 40 horsepower
- Rescue boat paddles
 - 2 pcs - 56-inch plastic paddle
 - 6 pcs - 54-inch plastic paddle
 - 3 pcs - metal paddle
 - 3 pcs - canoe paddle

- **Wet suits**
 - Oceanic wetsuit - 7 pcs
 - Stratos fins - 7 pairs
- **Personal protective equipment**
 - Rain boots - 190 pairs
 - Rescue boots - 150 pairs
 - Raincoat - 150 pcs
 - Urban vests - 10 pcs
 - Hard hat - 125 pcs
 - Safety goggles - 100 pcs
 - Gloves - 100 pairs
- **Floatation devices**
 - Life ring or ring buoy - 10 pcs
 - Rescue can - 5 pcs
 - Sea safe life vest - 40 pcs
 - Urban bulldog life vest - 10 pcs
 - Salbabote life vest - 70 pcs
- **Rescue pole and accessories**
 - Telescopic rescue pole - 1 pc available
 - Rescue throw bag - 4 pcs available
 - Body hook
 - Floatation collar
 - Clamping float
 - Crook
 - Grappler
 - Pro Sping Snare

HIGH AND LOW-ANGLE RESCUE EQUIPMENT

Muntinlupa City is susceptible to earthquakes since the West Valley Fault System directly traverses the city. Hence, the DDRM of the city is reinforced to perform high and low-angle rescue responses.

Here is the list of high and low-angle rescue equipment the DDRM of Muntinlupa has:

- Ropes
 - Static rope
 - Super static rope
 - Marine terypro rope
 - Dynamic rope
 - Polyproline rope
- Drone
- Descent control devices
 - Rescue-8 horn
 - Rescue double pulley
 - Technical rescue rigging plate
- Single attachment single sheave pulley
- AMD carabiner
- Tandem speed
- Descender figure 8
- Hand ascender lift
- Paw rigging plate
- Brake bar
- Safety gears
 - Climbing harness
 - Heavy-duty impact gloves
- Safety jumping cushion

LIGHTS AND SUPPLY EQUIPMENT

Power outages can happen at any time during a disaster response. Adequate lighting helps to facilitate safer movement for first responders throughout emergency response and rescue operations.

Here is the list of lights and supply equipment the DDRM of Muntinlupa has:

- Generator set
 - Fujihama 2500 watts
 - Lotus 5000 watts
 - Fortress 5000 watts
- Light towers
 - Shimaywa light tower with generator set carrier
 - Portable high mast - light tower
 - Fireco lightweight high mast - light tower
 - Teklite high mast - light tower
- Flashlight
 - Handheld flashlights
 - Hand press flashlights
 - Tactical flashlight
 - Torch light

FIREFIGHTING EQUIPMENT

At times of a raging fire, firefighters are bolstered with their tools to save more lives while also protecting themselves from different fire hazards.

Here is the list of firefighting equipment the DDRM of Muntinlupa has:

- Rescue saw
- Fire hose nozzle
- Fire hose
- Thermal imaging camera
- Halligan tool
- Fire blanket
- Fire extinguisher
- Personal protective equipment
 - Fire helmet
 - Firefighter gloves
 - Fire turnout gear
 - Hood/neck shrouds
 - Full face mask or breathing apparatus
 - Firefighter station boots

MEDICAL AND COVID-19 RESPONSE EQUIPMENT

Medical emergencies and accidents can occur at any moment, and we are still dealing with COVID-19. Ambulances and emergency hotlines are available, but they are pointless if there are no tools and equipment on standby.

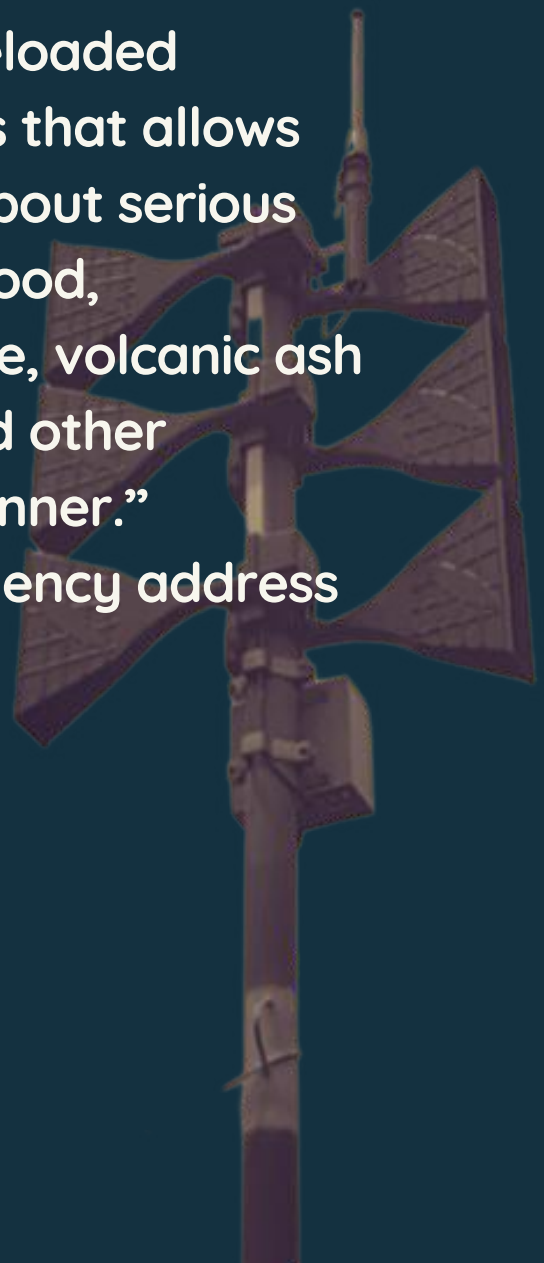
Here is the list of medical and COVID-19 response equipment the DDRM of Muntinlupa has:

- Medical equipment
 - Stretchers
 - Scoops
 - Spine boards
 - Stairchair and Wheelchair
 - Oxygen tanks
 - Automated external defibrillator with pads
 - Overall protective gear
 - Trauma bag
- COVID-19 response equipment
 - Disinfection equipment
 - Electric and manual sprayer machine
 - Vector fog machine
 - Ultraviolet sterile push cart
 - Misting canon

EARLY WARNING SYSTEM

EMERGENCY PUBLIC SYSTEM

- Citywide emergency public address system (Siren)
 - “An electronic sound amplification and distribution system with preloaded emergency announcements that allows the public to be informed about serious emergencies such as fire, flood, earthquake, tropical cyclone, volcanic ash fall, simulation exercise, and other emergencies in a timely manner.”
 - High-powered public emergency address
 - Siren Workstation
 - Lightning Arrester



13 siren locations and **ITS COVERED AREAS**

- **Tunasan Barangay Hall**
 - RMT Industrial Complex
 - Brgy. Tunasan
 - Tunasan Proper
 - PACWOOD
 - Aradia St.
 - Buendia St.
 - Sto. Niño
- **Poblacion Barangay Hall**
 - Poblacion Proper
- **Pamantasan ng Lungsod ng Muntinlupa**
 - NBP Reservation
 - Katarungan 1 & 2
 - South Green Heights
- **MCTI Barangay Putatan**
 - San Guillermo
 - Brgy. Putatan Proper
- **Muntinlupa City Hall**
 - Putatan National Road
 - Gruenville Subdivision
 - Lakeview
 - Estanislao St.
 - Bliss
 - Bruger
 - Soldiers
- **Southville 3 Health Center NHA**
 - Southville 3
 - Victoria Homes
 - BUCOR

- **Bayanan Elementary School**
 - Bayanan Proper
 - Bayanan Baybayin
- **Alabang Elementary School**
 - Alabang Proper
 - Ilaya
 - Montillano
 - Alabang Baybayin
 - Estejonor Compound
 - Joaquin Compound
- **Filinvest Housing**
 - Filinvest Housing
 - Rizal Village
 - Crispin Ext./CENA
 - Sitio Rizal
- **Cupang Elementary School**
 - Cupang National Road
 - Purok 2, 3, & 4
 - Cupang Baybayin
- **Sucats Barangay Hall**
 - M. L. Quezon Road
 - Sucats Proper
 - Sucats Baybayin
 - United Posadas Subdivision
 - Colegio de Muntinlupa
- **Alabang Hills**
 - San Jose Village
 - Alabang Hills Village
 - Tierra Nueva
 - Alabang 400
- **MBHS Barangay Buli**
 - Brgy. Buli Proper
 - Buli Baybayin
 - Purok 5 & 6 of Cupang
 - Purok 1 of Sucats

HYDROMETEOROLOGICAL AND SEISMIC

- **Automated Rain Gauge**
 - Owned by the Department of Science and Technology (DOST)
 - Locations:
 - Sunken Garden, Brgy. Poblacion
 - PACWOOD, Brgy. Tunasan
 - Owned by the Local Government Unit (LGU)
 - Locations:
 - Buli Elementary School, Brgy. Buli
 - City Hall Annex Building, Brgy. Putatan
 - Pamantasan ng Lungsod ng Muntinlupa, Brgy. Poblacion
 - Brgy. Alabang (direct report to DSWD, Region 4A)
- **Local Weathering Monitoring Station**
 - An instrument used in weather forecasting and climate study to measure atmospheric conditions.
 - Locations:
 - Bay Park, Brgy. Sucat
 - Midland Compound, Brgy. Tunasan



AUTOMATED RAIN GAUGE



LOCAL WEATHER MONTERING STATION

Photos from Muntinlupa City Department of Disaster Resilience and Management

- **Poteka-Ulat (automated weather monitoring)**
 - It measures several weather parameters: solar radiation, rain, wind, speed and direction, air pressure, humidity, and temperature
 - Locations:
 - Colegio de Muntinlupa, Brgy. Sucat
 - Bayanan Elementary School, Brgy. Bayanan
 - Sunken Garden, Brgy. Poblacion
- **Flood Warning System**
 - Flood Level Monitoring
 - Automated Flood Warning Level Meter Sensor
 - Flood Hailing System
 - Flood Level Water Depth Marker
- **PHIVOLCS Earthquake Intensity Meter**
 - A seismic scale used to measure the intensity of earthquakes
 - Location: Resiliency Building Operations Center
 - Fault Markers
 - Accelerograph



POTEKA-ULAT



PHIVOLCS INTENSITY METER

MAKING MUNTINLUPA INITIATIVE

A state-of-the-art **MOBILE LEARNING HUB**

The "state-of-the-art" virtual reality (VR) area on the learning hub lets residents "near-to-actual" disaster scenarios, such as earthquakes, flooding, storm surges, volcanic eruptions, tsunamis, landslides, etc. through VR headsets.

The VR facility intends to teach residents about disaster response while offering an immersive, visual, and auditory experience of weather disturbances and tragedies.



How about your city?
CHECK YOUR CITY TODAY!

Considering how susceptible we are to calamities and how accidents are inevitable, we have to aspire to be like the City of Muntinlupa...

**DAPAT LAGING ALISTO,
MAGING ALERTO,
PILIPINO**



All information are from the Muntinlupa City
Department of Disaster Resilience and
Management (2023)

Powered by Marked Safe (2023)