



FIS

**CONTRACTORS
AWARDS 2024**

WINNERS AND
FINALISTS

thefis.org



IT STARTS WITH FABRIC

Ecophon Clipso™ range offers knitted fabrics allowing you to cover walls and ceilings, creating a seamless look, with acoustic absorption up to class A.

www.ecophon.com/uk

Tel: 01256 850977

Email: info@ecophon.co.uk

FIS CONTRACTORS AWARDS 2024

This year's Contractors Awards Lunch, held on 6 June at the Royal Lancaster Hotel in London, once again marked the achievements of top talent in the interiors sector. Guests were entertained by the guest speaker – comedian and author Shaparak Khorsandi – and MC Alan Dediccoat.

CALL FOR ENTRIES

Entries are being sought for the 2025 FIS Contractors Awards. The award categories cover a wide range of disciplines and attract entries from some of the leading companies in the finishes and interiors sector. All FIS contractor members should consider entering as it is the quality of work which is judged, not the value or profile of the contract. Manufacturers may enter a contractor for a project where their product has been used.

WHY ENTER?

Winning an FIS award is an excellent way to raise your company's profile and gives you a competitive edge. An award provides visible and valuable recognition for your entire organisation.

If your company delivers first class interior solutions, then this is a perfect opportunity to be recognised for the quality of your work.

Winners and entrants receive substantial publicity across FIS publications and on the FIS website.

ENTRY FORMS

Deadline for entries is 31 October 2024 and the fee is £270 per entry.

Only FIS contractor members are eligible to enter.

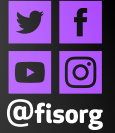
For more details call 0121 707 0077 or visit [thefis.org](https://www.thefis.org)

CATEGORY INFORMATION

The FIS Contractors Awards ceremony pays tribute to design and craftsmanship. The architect or interior designer of a winning project also receives an award. This year's awards included the following categories:

- Project of the Year
- Interior fit out
- Partitioning
- Ceilings
- Drylining
- Plastering
- Steel-framed systems
- Acoustic comfort
- Sustainability

REWARDING INDUSTRY'S BEST



FIS

CONTRACTORS AWARDS 2025

DEADLINE 31 OCTOBER 2024
• Apply online at thefis.org

The FIS contractors awards celebrate high levels of craftsmanship and best practice in the finishes and interiors sector. The awards are a platform for contractor members to demonstrate the quality and excellence of their work to clients and the wider sector.

[#FISawards](https://twitter.com/FISawards)



"We received an email about the awards from FIS, so I thought we may as well enter. It was a bit last minute and it's been years since we last entered, but Exton Vineyard was a project we were honoured to be involved with. We're a very humble company - we don't blow our own trumpet or get involved with social media - but we will now!"
RICHARD SCEVITY, DIRECTOR,
NEW FOREST CEILINGS

JUDGES' COMMENTS

“This year the competition between entries has been extremely high, with most scores achieving the same benchmark for quality of workmanship.

We then decide what percentage points to apply to each entry. Our in-depth assessment of the work covers a range of factors: sustainability, design input, problem-solving, logistics, value-added initiatives and integration.

As ever, the final judging evaluation comes down to minimal decimal point differences between those achieving or not achieving the winning standards.

We take our responsibilities seriously – we fully understand the hard work and endeavour undertaken on every project. Once again, you all demonstrated the incredible ability of FIS members to achieve exceptionally high standards of workmanship.

We congratulate all of you on your professionalism and expertise. And we thank you all for the time and courtesy extended to us.”

TONY PIERI AND COLIN HUNTER



**EASY TO DO
BUSINESS WITH.**
DIFFICULT TO
LIVE WITHOUT.

Our local branches offer an extensive range from all the leading suppliers you trust. But a business is nothing without its people and we're no different. Our friendly knowledgeable team are ready to support you with even the most complex of projects, while our dedicated in-house technical team are on hand to provide assistance with building requirements. Enjoy a hassle-free trading experience with a distributor that genuinely talks your language. Now that's an easy choice.

minsteronline.co.uk

MINSTER



**THERMAL
INSULATION**



DRY LINING



**FIRE
PROTECTION**



CEILINGS



PARTITIONS



ACOUSTICS



ROOFING



**EXTERNAL
FAÇADES**



FLOORING



PROJECT OF THE YEAR
Space Interior Systems
The HVN, London



Alain Speed was the guest judge for the 2024 FIS Contractors Awards, selecting the overall Project of the Year from the winning contracts across all categories.

Looking through the exceptionally high standards of installation in the category winners has been a pleasure. Space Interior Systems's wellness spa for HVN stood out for the beautifully crafted biomorphic shapes, seamlessly blending ceilings and walls and integrating sophisticated interior planting.

The project met all the challenges of setting out, achieving a high quality finish, acoustic separation, a tight programme and working within a listed building. This required close collaboration with client ISG and architect zynk Design. All the hard work is now done, and people can enjoy sensory relaxation within these luxuriant interiors.

See pages 9 and 35 for more details



Alain Speed

Associate, PRP LLP

As Technical Standards Auditor, Alain reviews projects and develops practice-wide technical guidance for PRP. A RIBA chartered architect, Alain has more than 35 years' experience delivering projects from inception to completion for leading commercial practices as well as for boutique architecture firms across London.

CATEGORY
SPONSOR





PROUD SPONSORS
OF THE
INTERIOR FIT OUT
CATEGORY

WE KNOW

INTERIORS

INSULATION | DRYLINING | CEILINGS | PARTITIONING

DEMOUNTABLE PARTITIONING | OPERABLE WALLS | WASHROOMS | FIRE PROTECTION
LIGHTING | RAFTS & BAFFLES | TILE & GRID SUSPENSION SYSTEMS | CANOPY
WALL COVERINGS | FLOOR COVERINGS | ACCESS PANELS | RAISED ACCESS FLOORING

WORKING IN **PARTNERSHIP** WITH YOU

Our interiors specialists provide professional advice to find you a solution that will inspire and perform, whatever your budget, size or scope. Working closely with all of the leading manufacturers and in partnership with you, we strive to bring the complete interior solution that not only meets but exceeds your expectations.

Contact our specialist team to discuss your requirements.

sigdistribution.co.uk | 0114 285 6300



**SCAN ME
TO FIND OUT MORE**





INTERIOR FIT OUT (UNDER £3M) **Space Interior Systems**



CONTRACT
The HVN, London

ARCHITECT
zynk

Space collaborated with client ISG and architect zynk to create this high-end urban wellness retreat. Shaped drywall partitions and ceilings with a sound rating of 58dB were combined with biophilic design elements to create a 'forest bathing' sensory relaxation experience.

The curves, cornices and alcoves – all made and sized off-site to significantly reduce waste – were designed to integrate and flow through the space, enhancing the luxurious feel of the treatment rooms, pods and seating areas. The project was completed in 20 weeks, giving ISG plenty of time for its launch in October 2023.

The judges said:
"Space's input into the design, combined with excellent workmanship, has produced a collection of intricate curved interfaces between walls, ceilings and feature niches."

CATEGORY
SPONSOR





INTERIOR FIT OUT (OVER £3M) **Portview Fit-Out**



CONTRACT
London College of Fashion, University of the Arts, London

ARCHITECT
Allies & Morrison

Portview oversaw the fit-out of this London College of Fashion (LCF) building in its new campus at the Queen Elizabeth Olympic Park.

The project comprised the fit-out of internal lining partitions, fire-stopping, raised access floors, resin floors, architectural metalwork and interior elements ranging from ceiling systems, internal doors and joinery to lecture theatre tiering.

It also involved functional elements such as washrooms, kitchenettes, reception desks and internal blinds, combining structural and aesthetic elements to create a dynamic and functional space for students and teachers.

See page 37 for more details

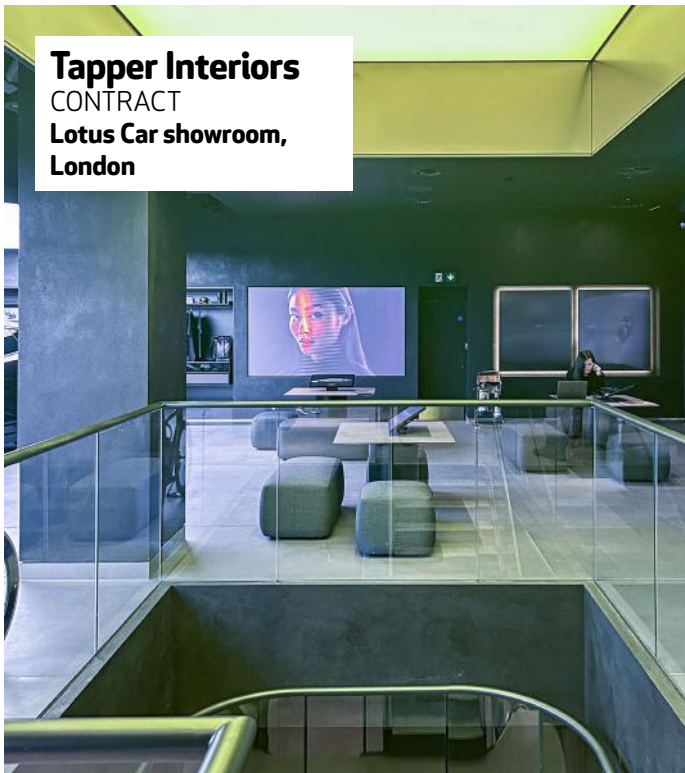
The judges praised the “multitude of specialist finishes”, adding: “Portview engaged in detailed discussions with the client on the best method of installation to achieve and enhance their technical parameters. All were installed to a very high standard, which resulted in excellent workmanship throughout.”

CATEGORY
SPONSOR



INTERIOR FIT OUT

SHORTLISTED



FireDNATM
Monitoring Passive Fire Products

Office F
FLOOR: Floor 1
BUILDING: z1-Demo Building

FIRE RATING:	FD30	SERIAL NO:	A000000307
CERTIFICATION BODY:	IFC	CREATED:	31/03/2022

ACTIONS:

- Modify
- QR code
- NFC Tag
- Inspect

Live status | Inspection history

T: 01403 597590
E: info@fire-dna.com
www.fire-dna.com





- ✓ Internal Partitions
- ✓ Drylining
- ✓ Ceilings
- ✓ Finishing Bead
- ✓ Steel Framing
- ✓ Façade Profiles
- ✓ Rainscreen Profiles
- ✓ Roof Coping

Protektor Group provides products and expertise to the finishes and interiors sector. One of the UK's largest assortment of manufactured profiles for drywall, partitioning and suspended ceilings. We provide standard and bespoke solutions that consistently meet the exact needs of your project.

Our passion for innovation, our commitment to sustainability and our continuous push for operational excellence set us apart from the competition.

For more details visit us at www.protektor.co.uk

☎ 01562 515200

✉ sales@protektor.co.uk

📍 Protektor Group UK Limited, Protektor House,
Edwin Avenue, Hoo Farm Estate,
Kidderminster, Worcestershire,
England, DY11 7RA



Buy online at www.profilestore.co.uk



PARTITIONING (UNDER £1M) **Profixed Interiors**



CONTRACT
Capital.com, London

DESIGNER
Modus Workspace

Fintech firm Capital.com has transformed its London office space with a Cat B fit-out offering an immersive range of office spaces, meeting pods, breakout zones and client-facing areas.

Profixed supplied and installed all the partitioning, glazing, suspended ceilings, door sets and wall finishes for the fit-out, completing the programme in 18 weeks.

Some 900m of glazed partitioning used a mixture of specialised tracks with varied specifications of glass to achieve different levels of privacy – 300m of which was specified in a curved format.

Profixed also supplied and installed a floating glass floor in one of the rooms, as well as all of the door sets, with a variety of dB ratings, vision panels, single/double glazing, laminate styles and ironmongery details.

“The requirement to provide the curved deflection head details to the partitioning and walls was achieved with excellent results,” said the judges. “Overall, a very pleasant installation.”

CATEGORY
SPONSOR



[profixedinteriors.co.uk](https://www.profixedinteriors.co.uk)



PARTITIONING (OVER £1M) **Mansell Building Solutions**



CONTRACT
**Aviva Studios,
Manchester**

ARCHITECT
OMA

Mansell constructed the main wall area of this cultural space in Manchester as a box-within-a-box to reduce any flanking sound transmission.

The firm had to work within a challenging 2.4m space between structures and sometimes at heights of up to 28m, delivering drywall partitioning, acoustic baffles and the steel framing. And because the main auditorium was constructed as a sphere, some of the theatre walls had to be sloped and in a curved radius.

Acoustic quality and soundproofing were key, so acoustic washes and bearings were applied to the heads and base channels, and steel framing with four layers of high-density acoustic boards formed enclosures around services.

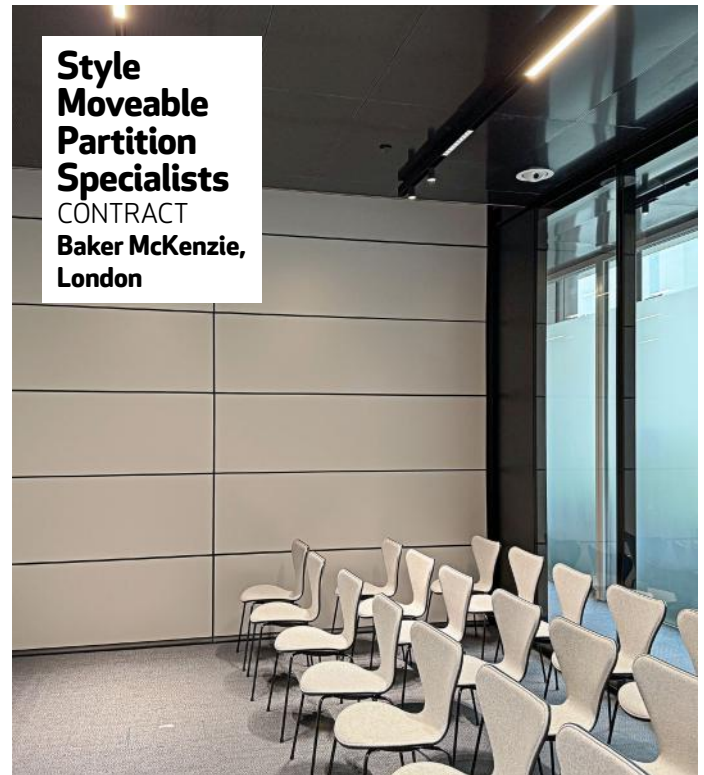
The judges acknowledged this was a “very difficult project to undertake”. “The box-within-a-box requirement and the height of the partitioning, coupled with the high acoustic and fire rating, were achieved with excellent results and to the satisfaction of the client.”

CATEGORY
SPONSOR



PARTITIONING

SHORTLISTED



Proud sponsors of the FIS Awards 2024



GO INTERIORS

THE SUNDAY TIMES
Best Places to Work 2023
MEDIUM COMPANY

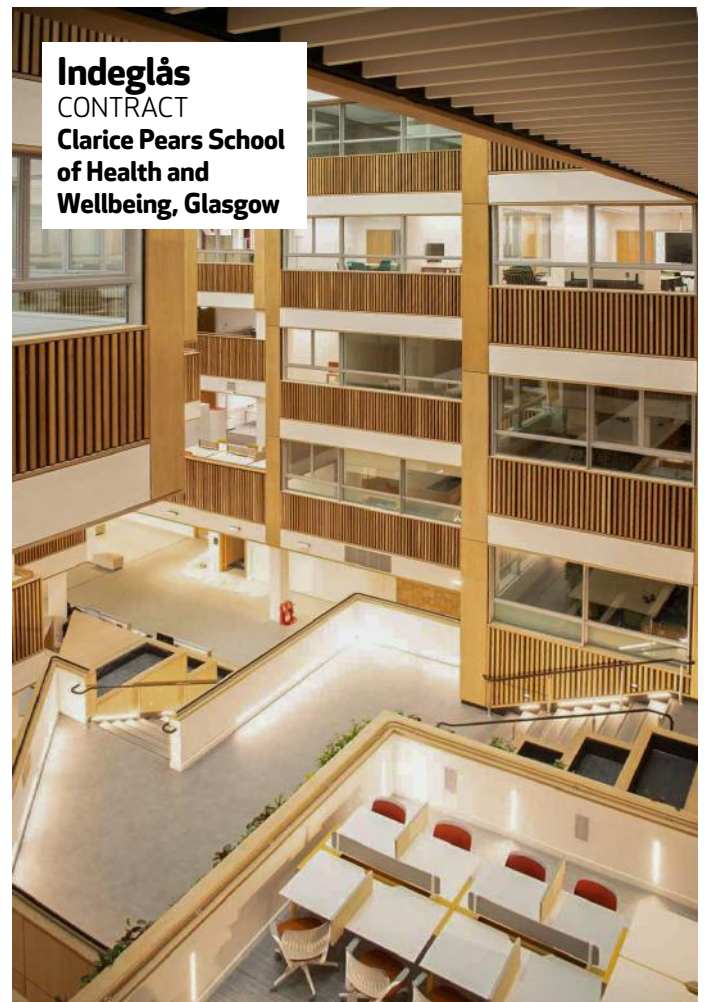
gointeriors.co.uk

INTERIOR BUILDING SOLUTIONS
Dry Lining • Ceilings • Insulation • Passive Fire Protection • Office Partitions

GUARANTEED OUTSTANDING SERVICE

 Project Support	 Helpful Staff	 Strong Communication	 Rapid Pricing
--	--	---	--

Dunstable 01442 202900 • Birmingham 0121 3333 424
Manchester 0161 2734511 • Middlesbrough 01642 608225
Sheffield 01142 560006 • Warrington 01925 822765



TRUSTED PARTNER THAT DELIVERS EXPERTISE

We are proud to be one of the UK's leading insulation, drywall and ceiling product distributors to the construction industry.





DRYLINING - COMMERCIAL **V&D Interiors**



CONTRACT
**Berrows House,
Worcester**

ARCHITECT
Glancy Nicholls Architects

V&D helped turn Berrows House, the former home of Worcester News originally built in the 1960s, into a new University of Worcester facility to teach medical students.

The redeveloped space includes an anatomy laboratory, a suite of GP simulation rooms, general seminar and teaching rooms, offices and a café. An eye-catching aspect of the scheme, a large open-plan breakout space, features monolithic curved partitions and ceilings, rooflights and sloped lay-in grid ceilings.

The rest of the rooms consist of bulkheads, lay-in grid ceilings with feature shadow gaps, acoustic rafts and acoustics baffles. The scope of the works for V&D included the installation of partitions – some curved – as well as MF ceilings, LIG ceilings and acoustic rafts and baffles.

The judges were left in no doubt: "The complex installation to achieve the monolithic curved walls and feature rooflights showed the quality achieved by V&D's workmanship."

CATEGORY
SPONSOR





Our new Carbon Low metal profile can help reduce your carbon footprint today.

To increase our chances for tomorrow.

We've launched a Gypframe® Carbon Low metal profile to help our customers reduce their carbon footprint and contribute to the reduction of embodied carbon across our industry.

With the same tried, tested and trusted processes you'd expect from British Gypsum, we're on a path to net zero carbon by 2050, leading the way in providing sustainable metal products with less than half of the embodied carbon through a change in the steel manufacturing process.



Find out more at
british-gypsum.com/carbon-low

We care about building better for people and the planet.



DRYLINING - RESIDENTIAL **RPN**



CONTRACT
**Block M Horlicks
Development, Berkshire**

ARCHITECT
Symmetry Architecture

RPN undertook the drylining, steel-frame system and screeding works involved in converting this former Horlicks factory into a block of 161 luxury flats, with a cinema, gym and nursery.

The factory, which closed in 2018 after the Horlicks UK brand was sold, was originally built in three phases and over three decades – 1908, 1929 and 1939 – which added to the complexity of this latest build.

The project works also involved the installation of SFS in a five-storey atrium, which included boxing roof purlins in Hardie panel.

The judges said, “Converting an old, disused factory built in phases into luxury accommodation meant that RPN had to overcome complex issues, requiring their knowledge and design input. The result is a pleasing combination of old industrial shell with a modern, well-constructed interior.”

CATEGORY
SPONSOR



DRYLINING

SHORTLISTED

DCD Plastering

CONTRACT

**Shireland CBSO
Academy, West
Bromwich**



SAS TRIMS
available next-day



The SAS Shop offers over 55 ceiling trims available for rapid next-day delivery or collection!

Set up a trade account at
shop.sasintgroup.com/trims

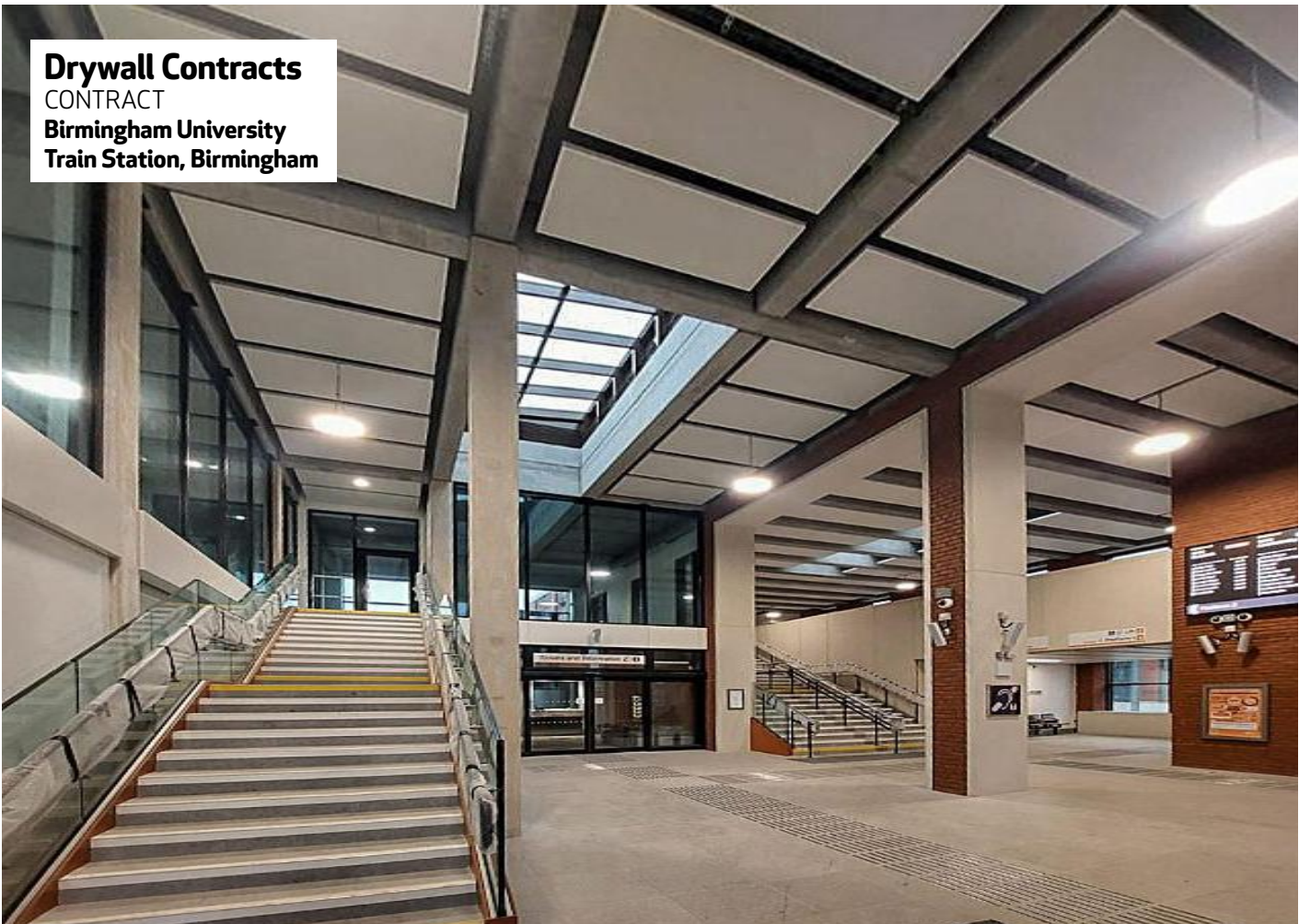
Flynn Interiors

CONTRACT

**Gradel Quadrangles,
Oxford**



DRYLINING
SHORTLISTED



/ We are UK Focused /



Evolved from Armstrong Ceiling Solutions, our team can offer hands on expert support, product knowledge and environmental guidance. As the UK's only major ceilings manufacturer, we'll deliver your order the very next day - **anywhere in the UK!***

 **zentia** Above all, **you**

*Order before 2pm



CEILING (UNDER £1.5M) **Flynn Interiors**



CONTRACT
**Gradel Quadrangles,
Oxfordshire**

ARCHITECT
Purcell

Delivering the architect's vision and ensuring fire safety were the key aims of Flynn's project to create curved, high-level ceilings and a timber roof structure for this new living and working space at New College, Oxford.

At the core of the design is a robust, meticulously crafted metal framing system on which Flynn integrated two layers of 5.5mm plywood, positioned to enhance structural integrity and serve as the canvas for the remaining layers.

Augmenting the plywood, four layers of 6mm fire-resistant gypsum-based board were applied, reinforcing the structure and achieving the required 60-minute fire rating. This ensured the protection of the vital timber elements without compromising on the design.

The judges applauded the "intricate design of the roof, which necessitated specialist knowledge and expertise to provide an artistically high-level ceiling in accordance with the client's very detailed requirements".

CATEGORY
SPONSOR



flynninteriors.co.uk



CEILINGS (OVER £1.5M) **Integra Contracts**



CONTRACT
**Northcliffe House,
London**

ARCHITECT
John Roberts Architects

Integra's installation – part of the transformation of this listed former printworks into office space – combined metal and mesh tile rafts, high-level acoustic treatment and a timber lattice ceiling in the entrance foyer.

Tiled ceiling rafts incorporated a larger than normal perforation pattern, with acoustic padding for greater sound absorption in open-plan areas. A black perimeter cloaking trim created a contrast to the bays, with integrated service housing tiles using a plain zone around services.

For the reception area, a wood-effect baffle ceiling was installed in a diamond lattice pattern. Integra designed a main runner baffle and cross-noggins supported from a bespoke hanging system, allowing the ceiling to be fully demountable, and the wood effect was replicated on pressed metal baffles.

The judges enthused: "The black perimeter cloaking trims enhanced the finish to the perfectly aligned mesh ceiling bays. The workmanship to achieve the fully demountable wood effect bays was very impressive."

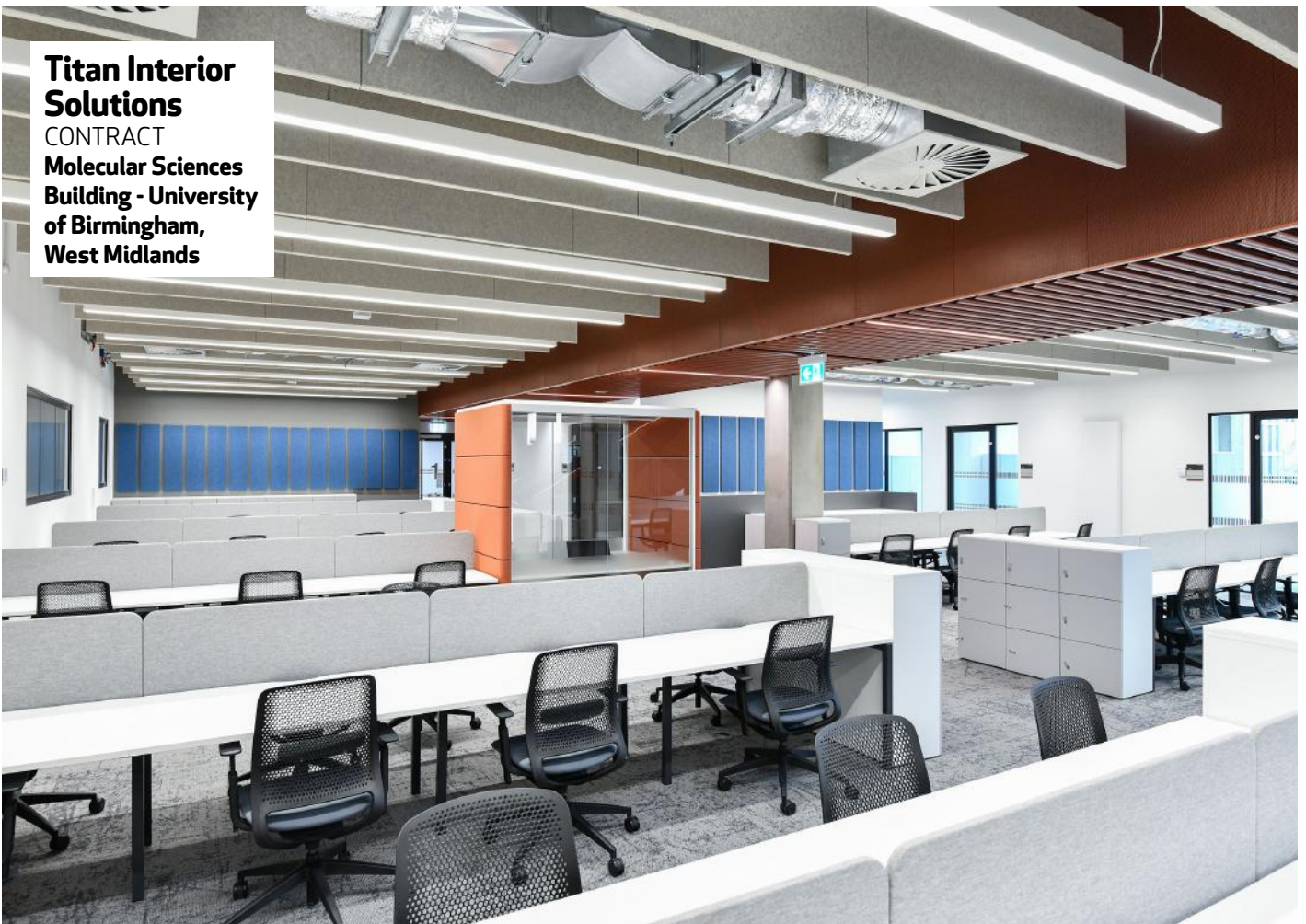
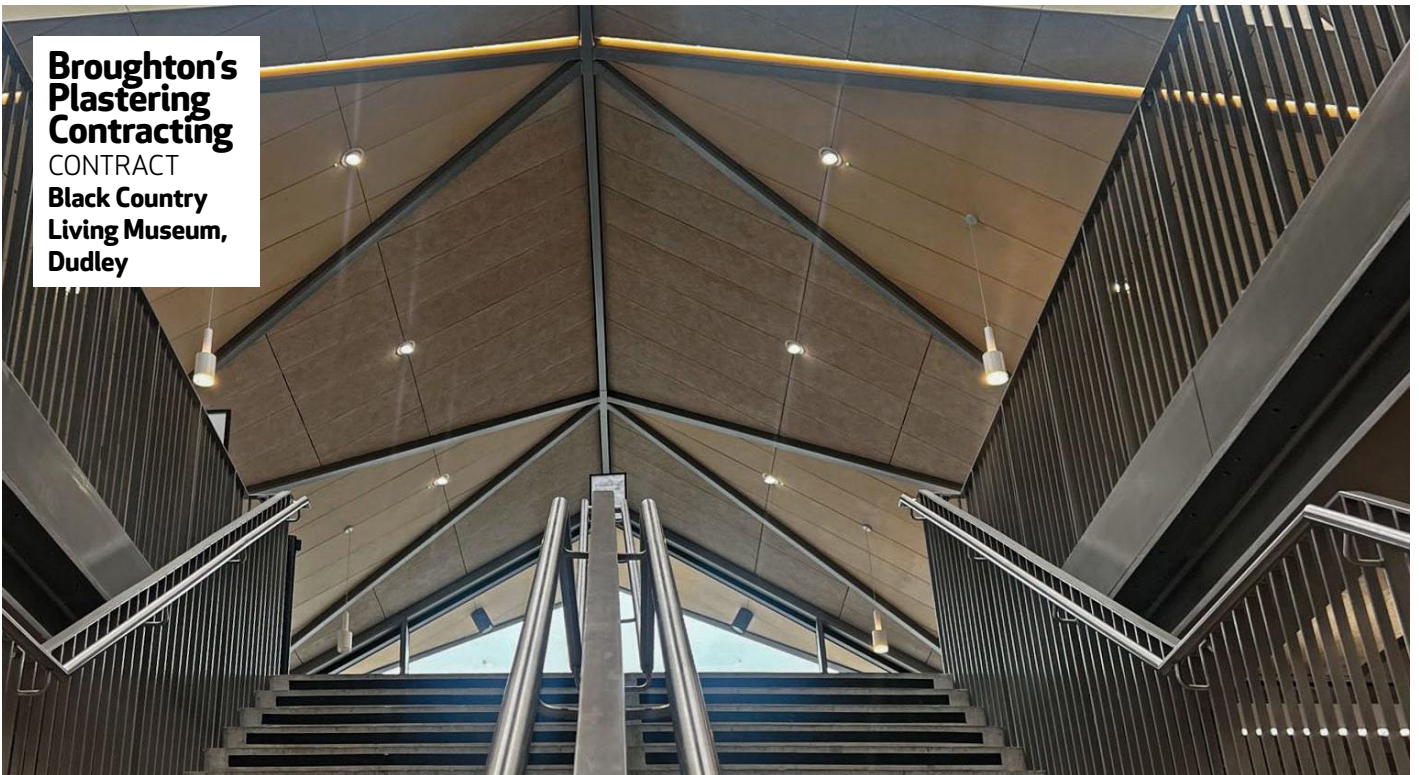
CATEGORY
SPONSOR



[integracontracts.com](https://www.integracontracts.com)

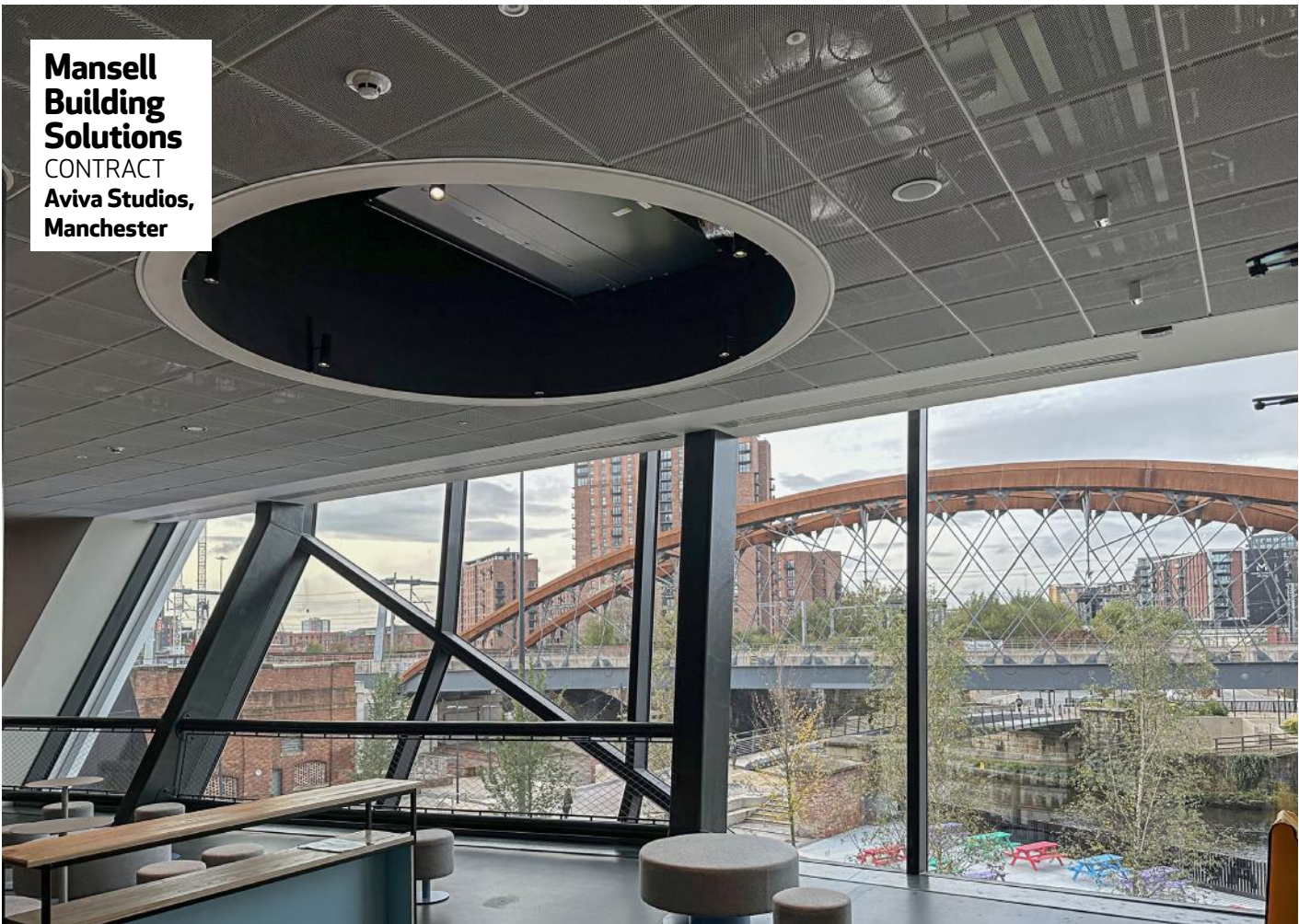
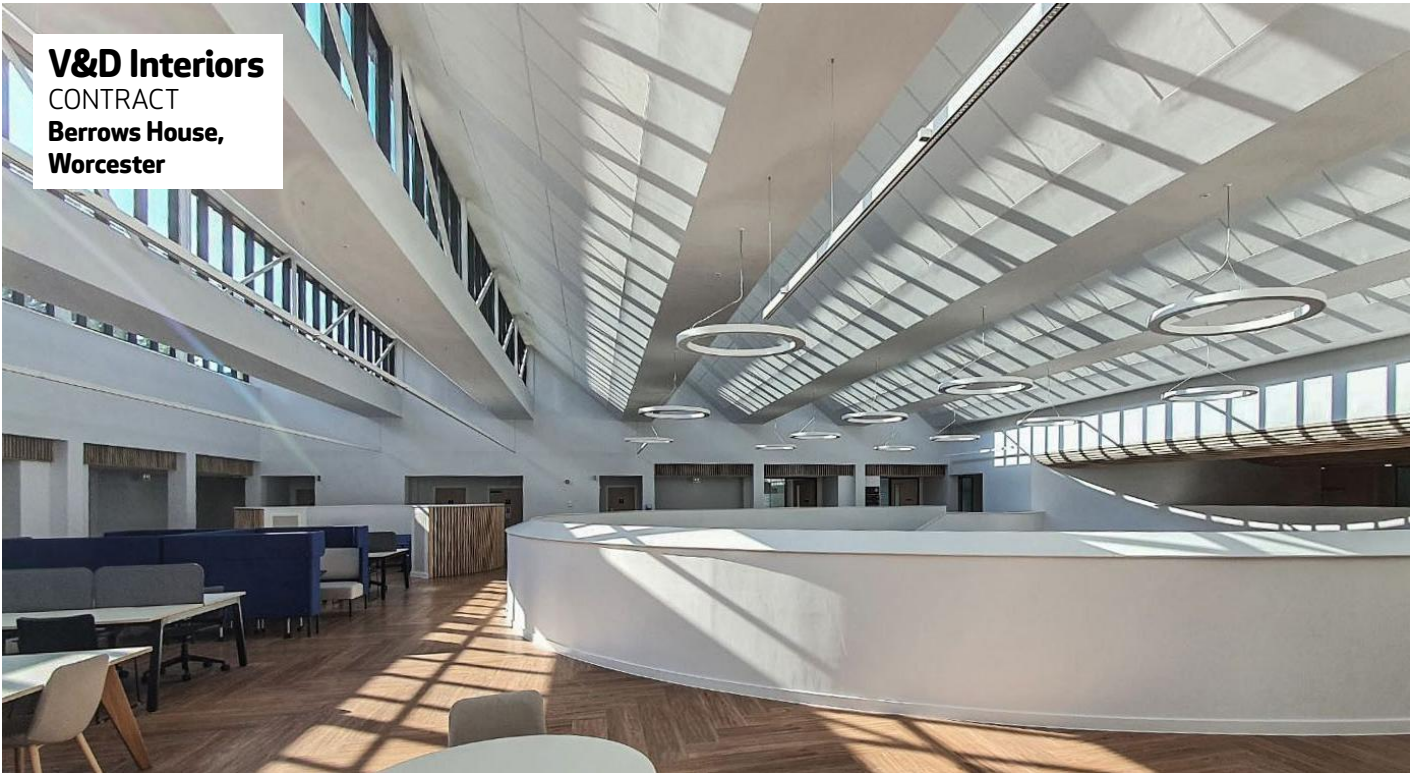
CEILING

SHORTLISTED



CEILINGS

SHORTLISTED





PLASTERING - INTERNAL **B&K Systems**



CONTRACT
SOYO, Leeds

ARCHITECT
DLP Architects

Built on the former site of Quarry Hill Flats in Leeds, SOYO New York Square offers a contemporary new take on city living.

Blocks E and F form the first part of the redevelopment for Caddick Construction, comprising 515 luxury flats, as well as communal spaces, roof terraces, a fitness centre, cinema and retail unit.

B&K designed and installed the SFS, as well as helping with the design and installation of partitions, insulation, pods, MF ceilings and concealed grid ceiling systems.

Challenges included designing and installing the SFS alongside the ceramic cladding systems with no margin for error, and installing fire-rated walls with +5 acoustics and $3\text{m}^3/(\text{h.m}^2)$ air tightness in each apartment tested.

The judges were delighted by the "smooth and uniform plastered surface and flawless backdrop for the paint finishes on bulkheads, ceilings and partitions".

CATEGORY
SPONSOR



bksystems.co.uk

Interior Solutions Specialists.

Ceilings | Drywall | Finishes | Flooring
Partitioning | Passive Fire Protection

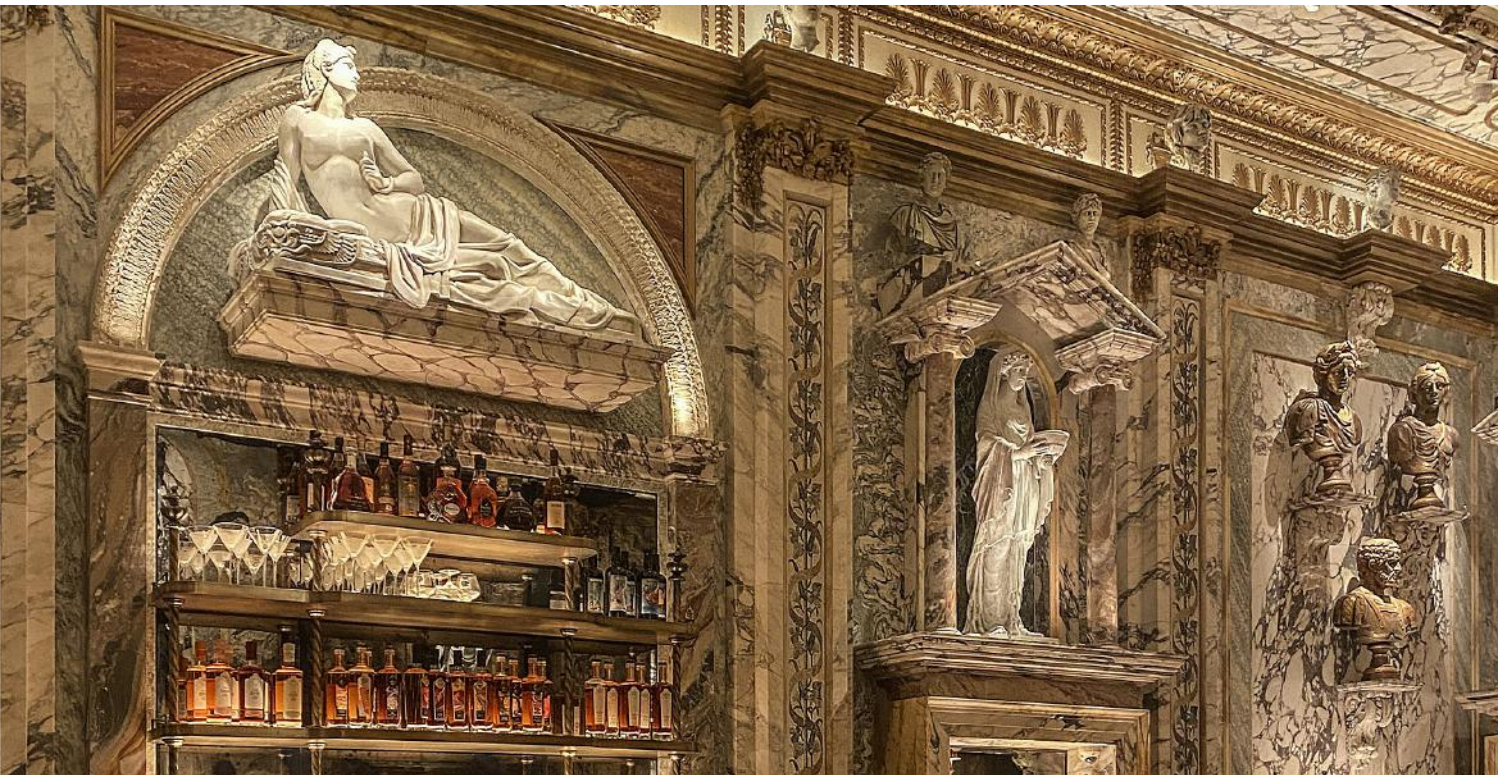
From ceilings, drywall and partitioning through to flooring, finishes and fire protection, you can rely on Nevill Long for all the solutions, specialist support and reliable service you need for your interiors projects.

Our nationwide branches stock an extensive range from market leading brands and our expert teams work closely with you at every stage.



PLASTERING - FIBROUS AND GRG

George Jackson



CONTRACT
Bacchanalia, London

INTERIOR DESIGNER
MBDS

George Jackson delivered a complex project in a tight timescale at this luxury restaurant and private members club in Mayfair, where sculptures by Damien Hirst, ceiling murals, 2,000-year-old artworks and George Jackson decorative plasterwork are all on display.

George Jackson used its historical, timber-carved moulds to create a range of designs, but the project required new artworks to be modelled and large geometric shapes created by 3D modelling and printing.

The project included shells for balcony undersides; a decorative ceiling for the private dining room, featuring floral bands, rosettes at moulding intersections and large rosettes to the coffers; decorative panels above doorways in the private members area and decorative arch surrounds; columns and corbels; and resin ornamentations for joinery based on George Jackson patterns.

The judges were wowed: "The stunning finish to the members dining room and the knowledge and expertise required to provide the bespoke shell-shaped balcony soffits warranted our choice as a winner in this category."

CATEGORY
SPONSOR

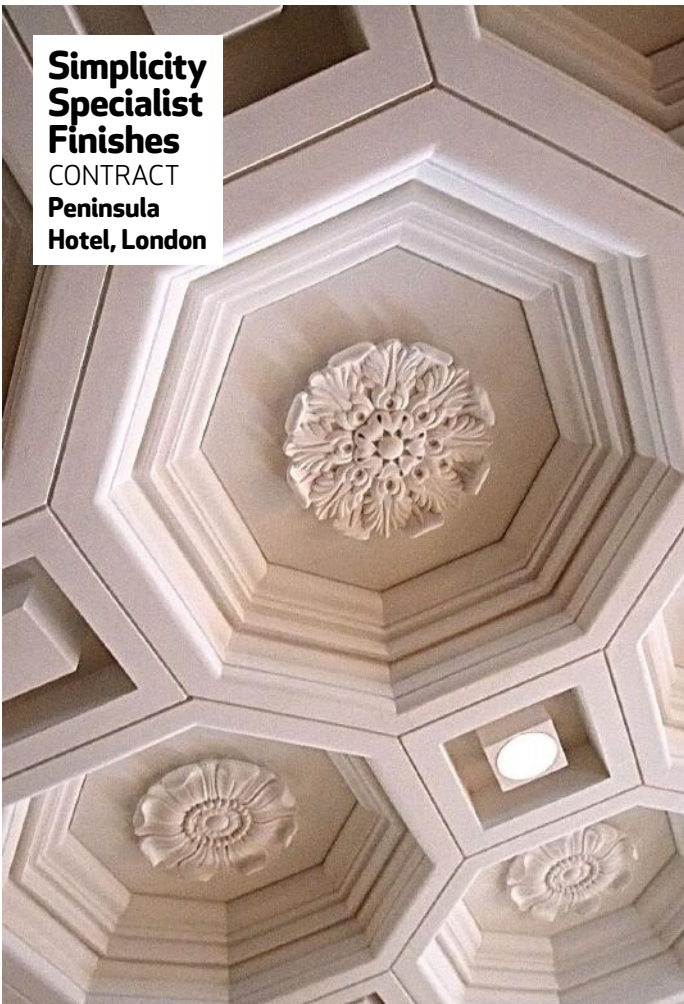


georgejackson.com

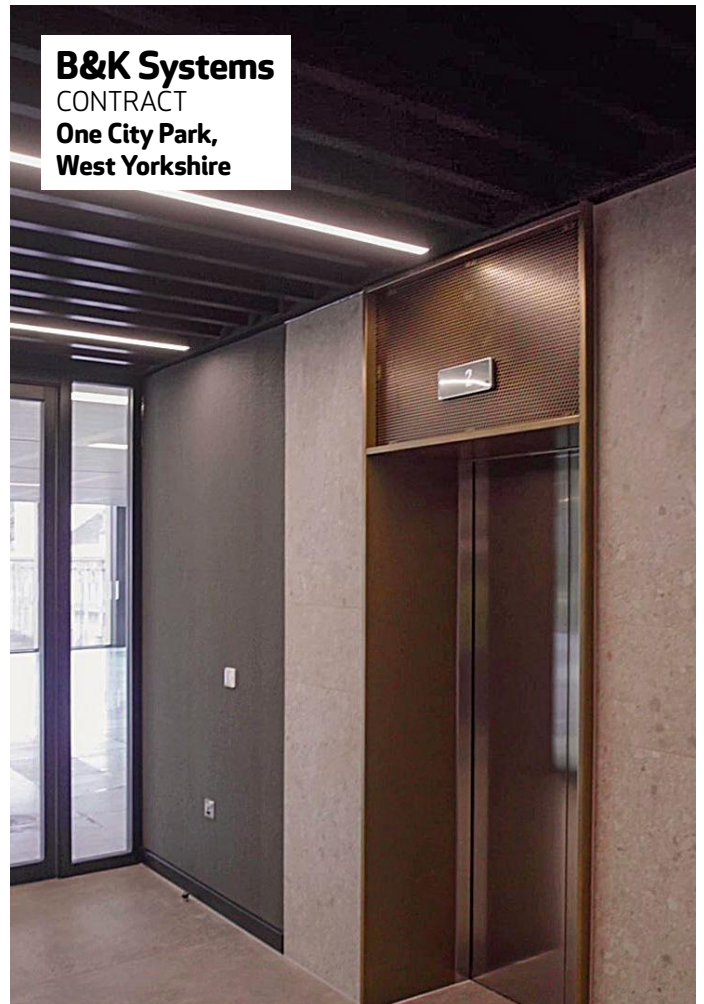
PLASTERING
SHORTLISTED



Gillespie
CONTRACT
Café
Lapérouse,
London



Simplicity
Specialist
Finishes
CONTRACT
Peninsula
Hotel, London



B&K Systems
CONTRACT
One City Park,
West Yorkshire



STEEL FRAMED SYSTEMS Phoenix Drywall (UK)



CONTRACT
**Sheffield Hallam
University campus,
Sheffield**

ARCHITECT
BDP Architects

Phoenix partnered with façade systems specialist Charles Henshaw & Sons to deliver the façade package at the new Sheffield Hallam University campus.

The buildings offer a broad spectrum of teaching and learning facilities, including new homes for Sheffield Business School, Sheffield Hallam University School of Law and social sciences and arts courses.

They use sustainability solutions such as heat pumps and photovoltaic panels to prepare for a zero carbon future. Phoenix helped to design and deliver a steel-frame oversail system featuring a shelf angle design with bespoke cleats at the corner junctions and curtain wall structural bearings.

The aim was to provide a seamless structure for brick slip and curtain walling finishes. In addition Phoenix installed sheathing board, fire-rated EPDM and insulation slab.

The judges praised the drywall firm's "collaboration with all stakeholders to design and deliver a bespoke SFS oversail and infill system".

CATEGORY
SPONSOR



phoenixdrywall.co.uk



HADLEY

SFS & DRYLINING

One Team. One Warranty.

For commercial support:

drylining.commercial@hadleygroup.com

sfs.commercial@hadleygroup.com

For customer services:

customerservices@hadleygroup.com

For technical support:

HCT@hadleygroup.com



STEEL FRAMED SYSTEMS

SHORTLISTED

Vietchi Interiors

CONTRACT

Lower Gilmore Place,
Edinburgh



Fix insulation up to 8X faster

Andrew Hodgekiss | RapidFix Project Manager

“Not facing the long timescales of drilling and plugging. You’re reducing the manpower on the job”

Designed for ventilated facade and soffit insulation. Install from 50mm-200mm soft and semi-rigid insulation to concrete. Improve Health & safety, work in more comfort and get the job done faster.

NEVER STOP BUILDING

L Reynolds (Building Systems)
CONTRACT
The Residences at Edgbaston, Birmingham



Come and experience distinctive Troldtekt solutions in London's architectural district

Working professionally with construction? Want to create elegant spaces with good acoustics? Then book a visit to Troldtekt's new showroom in trendy Clerkenwell.

Working professionally with construction? Want to create elegant spaces with good acoustics? Then book a visit to Troldtekt's new showroom in trendy Clerkenwell.

A wide range of Troldtekt acoustic panels is on show – and you can hear how they make a difference to the acoustics in an office environment. The showroom is part of international company Bachmann's office.

You can experience different variations of the award-winning Troldtekt design solutions and acoustic panels based on the carbon-reduced cement type FUTURECEM™. You can also get advice and guidance for your next project.



The showroom is located at
45 St John Street, Clerkenwell, London.

Scan the QR code
to book your visit



Six good reasons to choose Troldtekt:

- Good acoustics
- Documented sustainability initiatives
- Simple installation
- Robust and durable
- Effective fire performance
- Healthy indoor climate



ACOUSTIC COMFORT Space Interior Systems



CONTRACT
The HVN, London

Space's 20-week project to create high-end wellness retreat the HVN in Knightsbridge, London, has already won this year's Interior Fit Out (under £3m) award.

Space won praise for intricate interfaces to the curves of the new building, as well as ceiling abutments, partitions, GRG and plastercast features such as nooks, niches, cornices and coves.

Looking specifically at acoustics, the judges were impressed that Space had come up with "a more practical solution than others had designed, without loss in performance". They applauded the impact of an acoustician being involved in checking, designing and completion testing. "The interventions described to enhance acoustic performance are minor, and in many cases normal practice, so marks were given for a clear intervention," they said.

CATEGORY
SPONSOR



space-is.co.uk

EPD

INSULATION GROUP

DIGITAL DELIVERY NEXT LEVEL SERVICE

The launch of our new Digital Electronic Proof of Delivery in March is part of our sustainability objectives and it will take our delivery network to the next level. The streamlined process works with ease, bringing simplicity and additional peace of mind to all our customers.

With large comprehensive stock availability, you can get the insulation, drylining and screeding materials you need for your next project on site, on time. With coverage across much of the UK, we're setting the pace for others to follow.



Let's talk about what you need: 01733 202996
sales@epdinsulationgroup.co.uk
epdinsulationgroup.co.uk





SUSTAINABILITY Portview Fit-Out



CONTRACT
**London College of
Fashion, London**

The London College of Fashion project was completed to the highest sustainability standards, with Portview achieving a SKA Gold and a BREEAM award.

Portview's strong sustainability credentials played an integral part in the fit-out, from design to health and wellbeing to energy and material usage.

Portview recommended off-site construction of components to reduce the number material deliveries to site and save installation time. Electric pump trucks were also used to manoeuvre materials and components around the site, reducing the need for manual labour.

The workforce was monitored daily for wellbeing, and Portview had a full-time HR manager on site to hand out wellbeing advice. The client had also called for a diverse workforce in terms of ethnicity, local labour, disabled workers and others to be employed on the site, all of which had to be documented and reported on at a monthly site meeting.

The judges were in no doubt: "Apart from the firm achieving a BREEAM and SKA Gold, which is in itself impressive, Portview's sustainability input towards the design and the wellbeing of the workforce was exceptional." The judges concluded: "Portview's application on this site was exemplary and covered most requirements for sustainability."

CATEGORY
SPONSOR

EPD
INSULATION GROUP

portview.co.uk

FIS

FINISHES & INTERIORS SECTOR

FIS

Olton Bridge
245 Warwick Road
Solihull
West Midlands
B92 7AH

+44(0)121 707 0077
info@thefis.org

thefis.org