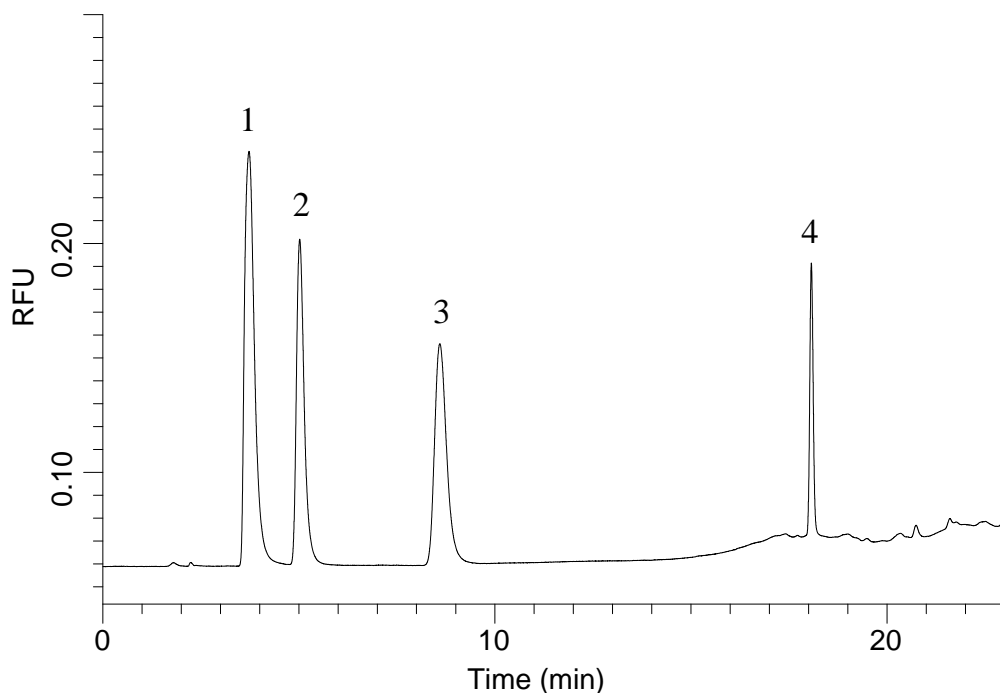


InertSearch™ for LC

Inertsil® Applications

Analysis of Tryptophan metabolites

Data No. LB172-0785



Conditions

System : Accustream system + LIF726
Column : Monocap C18 Fast-flow
(150 x 0.2 mm I.D.)
Column Cat. No. : 5020-10111
Eluent : A) 10mM CH₃COONa (pH4.0, CH₃COOH)/CH₃OH = 99/1, v/v
B) 10mM CH₃COONa (pH4.0, CH₃COOH)/CH₃OH = 7/93, v/v
A/B = 99/1 - 6min - 83/17 - 2min - 30/70 - 12min - 30/70 - 0.1min - 99/1 - 5min - 99/1, v/v
Flow Rate : 1 μL/min
Col. Temp. : 30 °C
Detection : FL Ex 266 nm Em 300-350 nm (LIF726)
Injection Vol. : 0.02 μL
Sample : Standard

Analyte:

| | |
|-------------------------------|---------|
| 1. Serotonin | 2.3mg/L |
| 2. Tryptophan | 1.9mg/L |
| 3. 5-Hydroxyindoleacetic acid | 2.4mg/L |
| 4. Melatonin | 1.6mg/L |