

# InertSearch™ for LC

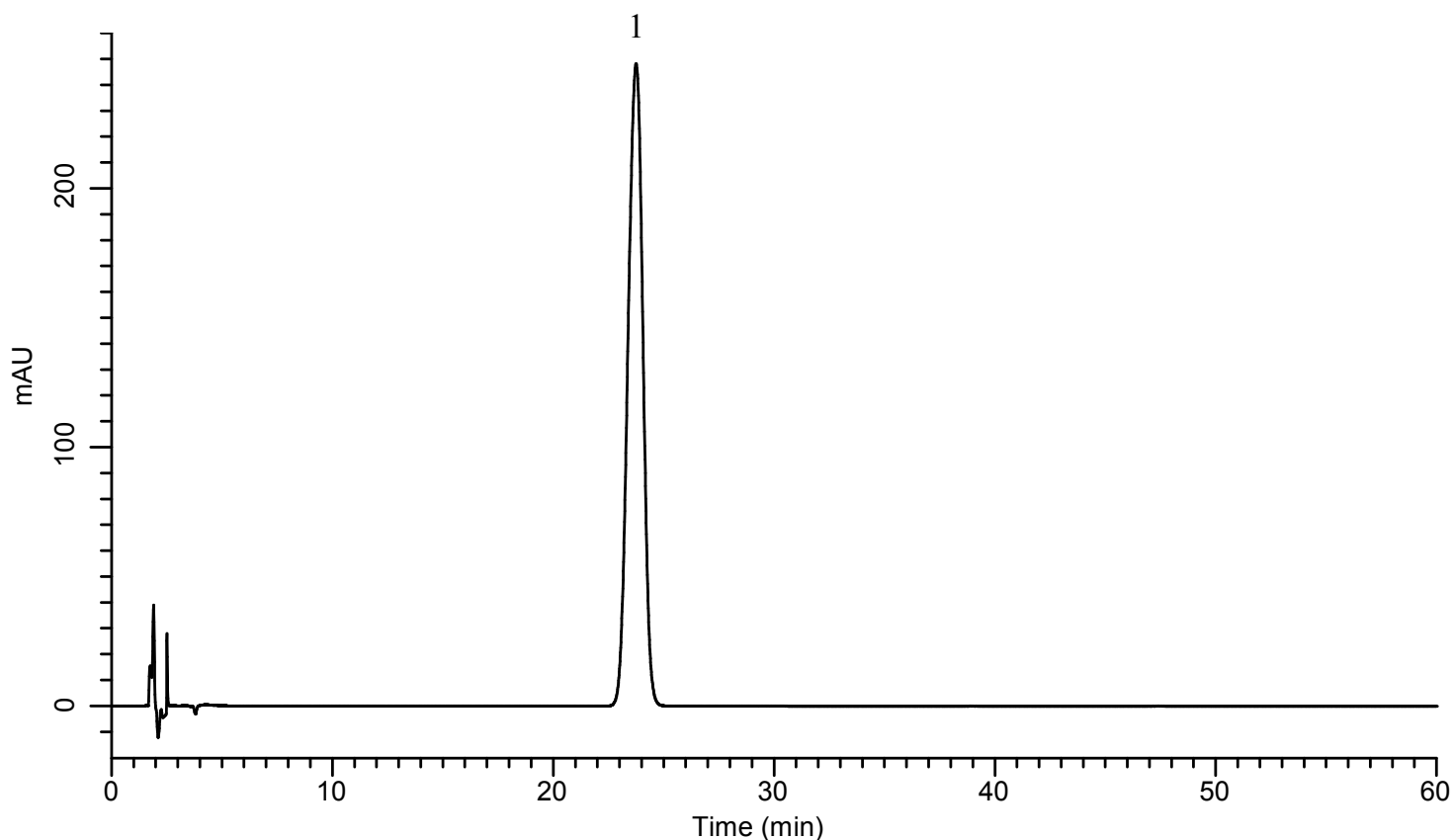
Inertsil™ Applications

## Analysis of Ezetimibe

(Under the Condition of USP41-NF36, Ezetimibe Tablets)

Data No. LB550-0812

### Standard solution of Assay



### Conditions

**System** : GL7700 HPLC system  
**Column** : InertSustainSwift C18 (5  $\mu$  m, 150 x 4.6 mm I.D.)  
**Column Cat. No.** : 5020-88026  
**Eluent** : CH<sub>3</sub>CN/THF/Buffer\* = 25/10/65, v/v  
**Flow rate** : 1.0 mL/min  
**Col. Temp.** : 40 °C  
**Detection** : UV 232 nm (PD7752 UV Detector)  
**Injection Vol.** : 30  $\mu$  L  
**Sample** : Standard

### **Analyte:**

1. Ezetimibe 200 mg/L

Symmetry factor (1) : 0.96 (< 1.5)

RSD of the peak area of 1 (%) (n=6)

: 0.07 (< 1.0)

\*6.8 g/L of Potassium dihydrogenphosphate Solution.